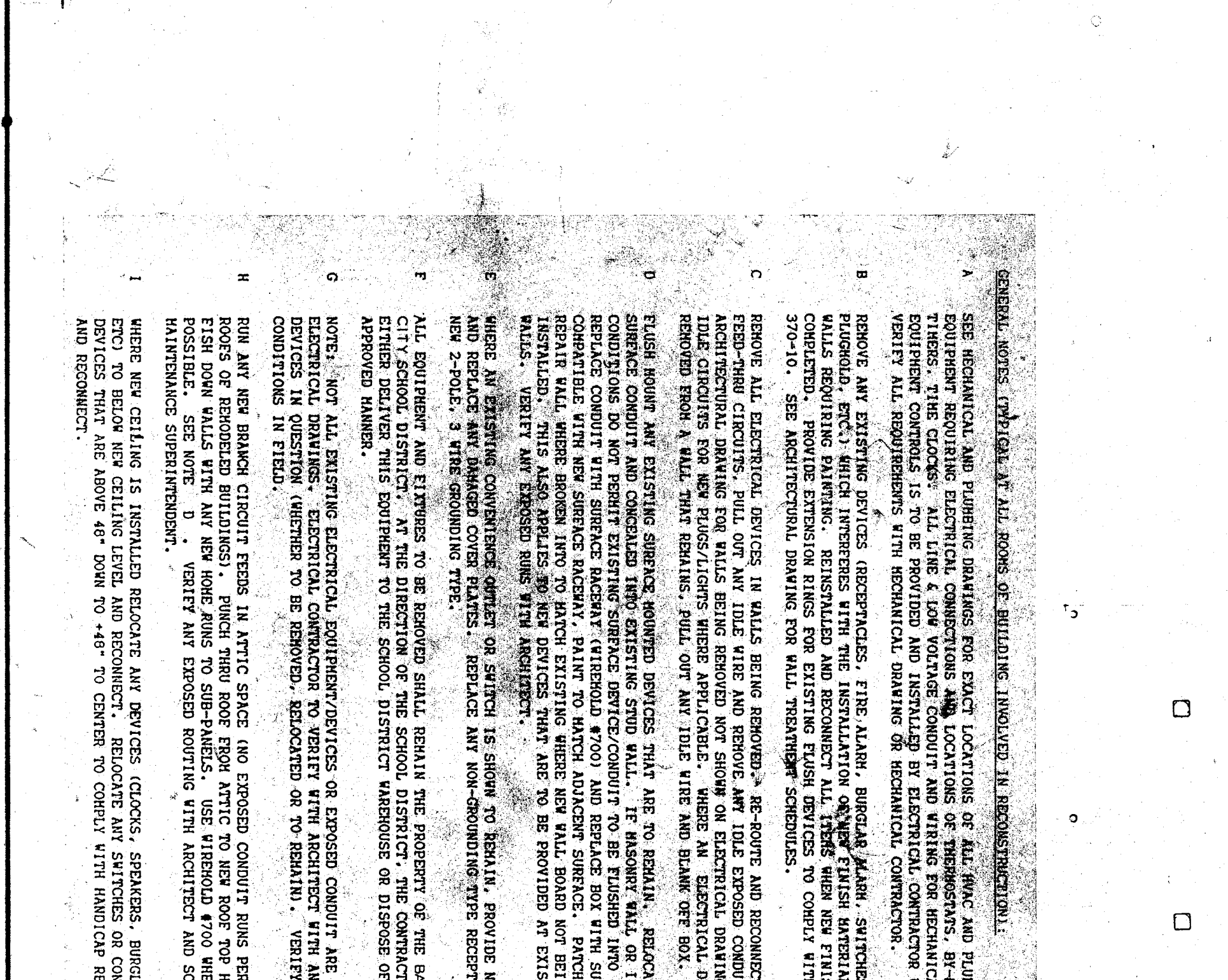
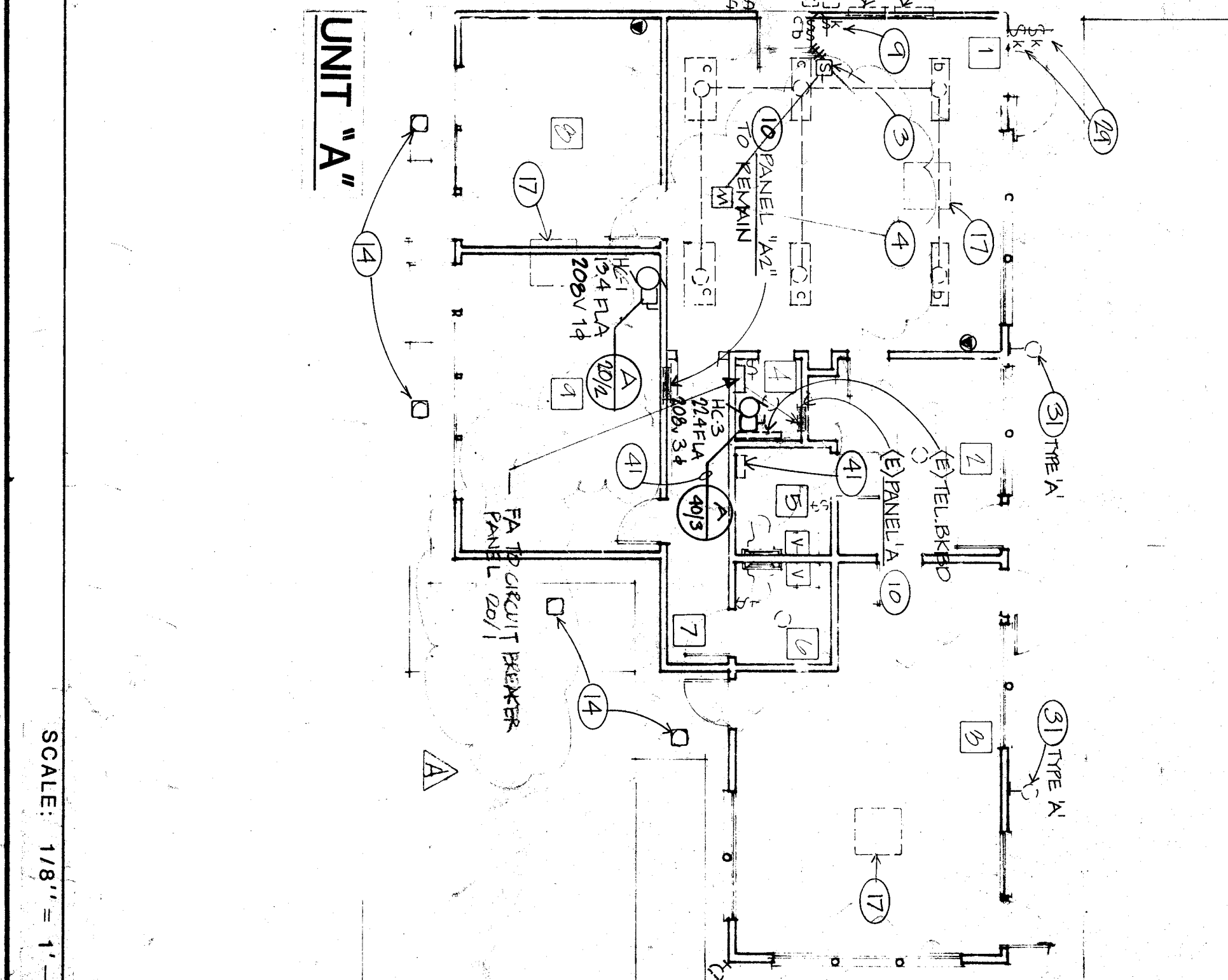
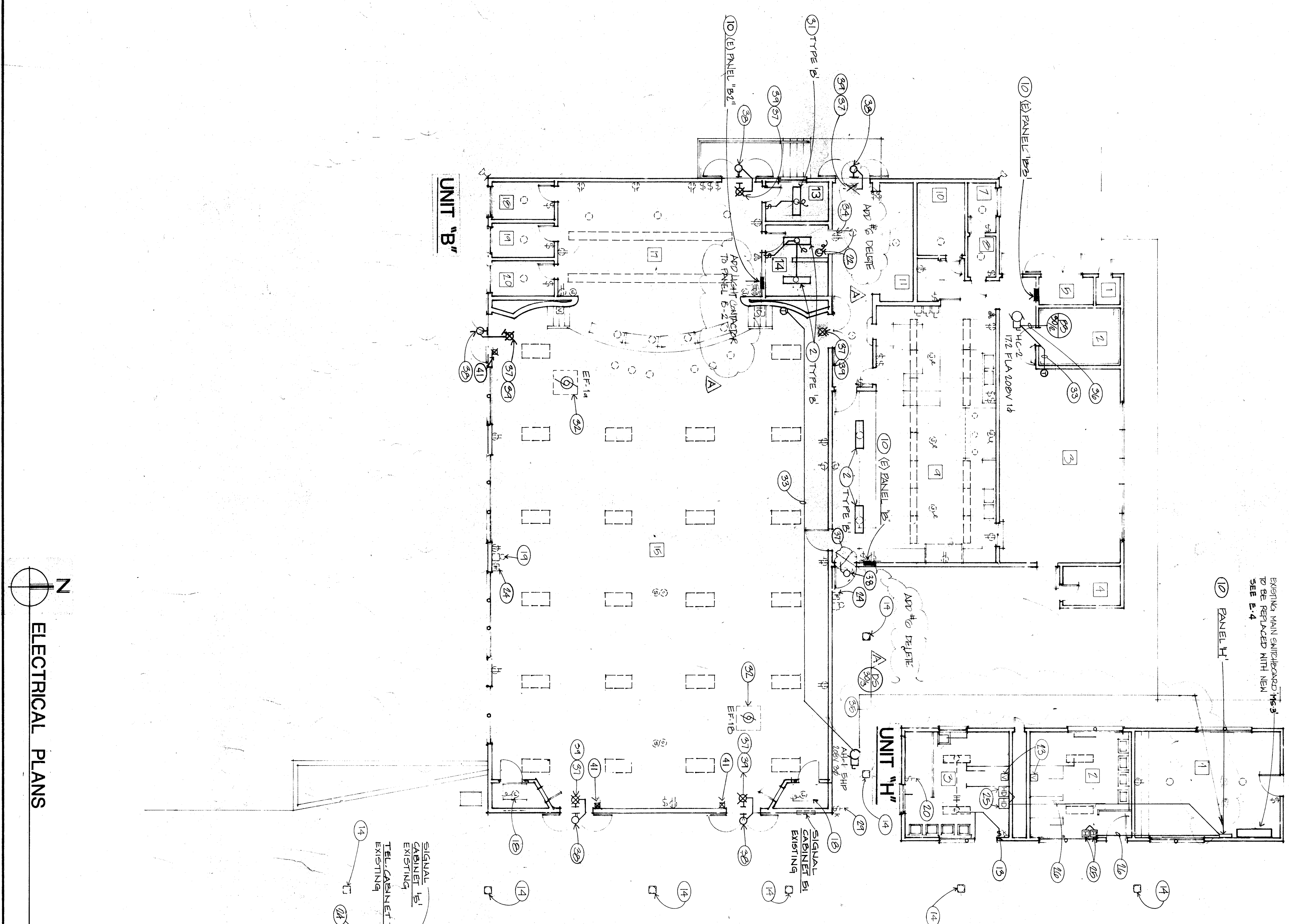


LOW LEVEL EXIT LTG.
NO SCALE

- EXISTING FLUORESCENT LIGHT FIXTURES IN THIS ROOM TO REMAIN. RECONNECT TO NEW HANGDOWN CONTROLS AND NOTION SOURCE PER NOTES (1), (2) & (3) BELOW. CONNECT TO EXISTING LIGHTING CIRCUIT IN ATTIC.
- INSTALL NEW FLUORESCENT TYPE AND QUANTITY AS SHOWN. CONNECT TO EXISTING LIGHTING CIRCUIT IN ATTIC.
- REMOVE EXISTING LOW LEVEL EXIT LIGHTS. VERIFY OPERATION WITH UNIT. VERIFY WITH ARCHITECT AND SCHOOL DISTRICT.
- REMOVE EXISTING LOW LEVEL EXIT LIGHTS. VERIFY OPERATION WITH UNIT. VERIFY WITH ARCHITECT AND SCHOOL DISTRICT.
- REMOVE EXISTING LOW LEVEL EXIT LIGHTS. VERIFY OPERATION WITH UNIT. VERIFY WITH ARCHITECT AND SCHOOL DISTRICT.
- REMOVE EXISTING LOW LEVEL EXIT LIGHTS. VERIFY OPERATION WITH UNIT. VERIFY WITH ARCHITECT AND SCHOOL DISTRICT.
- REMOVE EXISTING LOW LEVEL EXIT LIGHTS. VERIFY OPERATION WITH UNIT. VERIFY WITH ARCHITECT AND SCHOOL DISTRICT.
- REMOVE EXISTING LOW LEVEL EXIT LIGHTS. VERIFY OPERATION WITH UNIT. VERIFY WITH ARCHITECT AND SCHOOL DISTRICT.
- REMOVE EXISTING LOW LEVEL EXIT LIGHTS. VERIFY OPERATION WITH UNIT. VERIFY WITH ARCHITECT AND SCHOOL DISTRICT.
- REMOVE EXISTING LOW LEVEL EXIT LIGHTS. VERIFY OPERATION WITH UNIT. VERIFY WITH ARCHITECT AND SCHOOL DISTRICT.
- REMOVE EXISTING LOW LEVEL EXIT LIGHTS. VERIFY OPERATION WITH UNIT. VERIFY WITH ARCHITECT AND SCHOOL DISTRICT.
- REMOVE EXISTING LOW LEVEL EXIT LIGHTS. VERIFY OPERATION WITH UNIT. VERIFY WITH ARCHITECT AND SCHOOL DISTRICT.
- REMOVE EXISTING LOW LEVEL EXIT LIGHTS. VERIFY OPERATION WITH UNIT. VERIFY WITH ARCHITECT AND SCHOOL DISTRICT.
- REMOVE EXISTING LOW LEVEL EXIT LIGHTS. VERIFY OPERATION WITH UNIT. VERIFY WITH ARCHITECT AND SCHOOL DISTRICT.
- REMOVE EXISTING LOW LEVEL EXIT LIGHTS. VERIFY OPERATION WITH UNIT. VERIFY WITH ARCHITECT AND SCHOOL DISTRICT.

- EXISTING CLOSET SYSTEM TO REMAIN. NO WORK REQUIRED.
- REMOVE EXISTING LIGHT FIXTURES AND RIG OUT ANY DUCT WIRE. RECONNECT EXISTING LIGHT FIXTURES TO NEW SWITCHES AS SHOWN.
- REMOVE ANY EXPOSED DUCT CONDUIT AND WIRE IN THIS ROOM.
- REMOVE EXISTING LOW LEVEL EXIT LIGHTS. VERIFY OPERATION WITH UNIT. VERIFY WITH ARCHITECT AND SCHOOL DISTRICT.
- REMOVE EXISTING LOW LEVEL EXIT LIGHTS. VERIFY OPERATION WITH UNIT. VERIFY WITH ARCHITECT AND SCHOOL DISTRICT.
- REMOVE EXISTING LOW LEVEL EXIT LIGHTS. VERIFY OPERATION WITH UNIT. VERIFY WITH ARCHITECT AND SCHOOL DISTRICT.
- REMOVE EXISTING LOW LEVEL EXIT LIGHTS. VERIFY OPERATION WITH UNIT. VERIFY WITH ARCHITECT AND SCHOOL DISTRICT.
- REMOVE EXISTING LOW LEVEL EXIT LIGHTS. VERIFY OPERATION WITH UNIT. VERIFY WITH ARCHITECT AND SCHOOL DISTRICT.
- REMOVE EXISTING LOW LEVEL EXIT LIGHTS. VERIFY OPERATION WITH UNIT. VERIFY WITH ARCHITECT AND SCHOOL DISTRICT.
- REMOVE EXISTING LOW LEVEL EXIT LIGHTS. VERIFY OPERATION WITH UNIT. VERIFY WITH ARCHITECT AND SCHOOL DISTRICT.
- REMOVE EXISTING LOW LEVEL EXIT LIGHTS. VERIFY OPERATION WITH UNIT. VERIFY WITH ARCHITECT AND SCHOOL DISTRICT.
- REMOVE EXISTING LOW LEVEL EXIT LIGHTS. VERIFY OPERATION WITH UNIT. VERIFY WITH ARCHITECT AND SCHOOL DISTRICT.
- REMOVE EXISTING LOW LEVEL EXIT LIGHTS. VERIFY OPERATION WITH UNIT. VERIFY WITH ARCHITECT AND SCHOOL DISTRICT.
- REMOVE EXISTING LOW LEVEL EXIT LIGHTS. VERIFY OPERATION WITH UNIT. VERIFY WITH ARCHITECT AND SCHOOL DISTRICT.
- REMOVE EXISTING LOW LEVEL EXIT LIGHTS. VERIFY OPERATION WITH UNIT. VERIFY WITH ARCHITECT AND SCHOOL DISTRICT.

- REMOVE EXISTING LOW LEVEL EXIT LIGHTS. VERIFY OPERATION WITH UNIT. VERIFY WITH ARCHITECT AND SCHOOL DISTRICT.
- REMOVE EXISTING LOW LEVEL EXIT LIGHTS. VERIFY OPERATION WITH UNIT. VERIFY WITH ARCHITECT AND SCHOOL DISTRICT.
- REMOVE EXISTING LOW LEVEL EXIT LIGHTS. VERIFY OPERATION WITH UNIT. VERIFY WITH ARCHITECT AND SCHOOL DISTRICT.
- REMOVE EXISTING LOW LEVEL EXIT LIGHTS. VERIFY OPERATION WITH UNIT. VERIFY WITH ARCHITECT AND SCHOOL DISTRICT.
- REMOVE EXISTING LOW LEVEL EXIT LIGHTS. VERIFY OPERATION WITH UNIT. VERIFY WITH ARCHITECT AND SCHOOL DISTRICT.
- REMOVE EXISTING LOW LEVEL EXIT LIGHTS. VERIFY OPERATION WITH UNIT. VERIFY WITH ARCHITECT AND SCHOOL DISTRICT.
- REMOVE EXISTING LOW LEVEL EXIT LIGHTS. VERIFY OPERATION WITH UNIT. VERIFY WITH ARCHITECT AND SCHOOL DISTRICT.
- REMOVE EXISTING LOW LEVEL EXIT LIGHTS. VERIFY OPERATION WITH UNIT. VERIFY WITH ARCHITECT AND SCHOOL DISTRICT.
- REMOVE EXISTING LOW LEVEL EXIT LIGHTS. VERIFY OPERATION WITH UNIT. VERIFY WITH ARCHITECT AND SCHOOL DISTRICT.
- REMOVE EXISTING LOW LEVEL EXIT LIGHTS. VERIFY OPERATION WITH UNIT. VERIFY WITH ARCHITECT AND SCHOOL DISTRICT.
- REMOVE EXISTING LOW LEVEL EXIT LIGHTS. VERIFY OPERATION WITH UNIT. VERIFY WITH ARCHITECT AND SCHOOL DISTRICT.
- REMOVE EXISTING LOW LEVEL EXIT LIGHTS. VERIFY OPERATION WITH UNIT. VERIFY WITH ARCHITECT AND SCHOOL DISTRICT.
- REMOVE EXISTING LOW LEVEL EXIT LIGHTS. VERIFY OPERATION WITH UNIT. VERIFY WITH ARCHITECT AND SCHOOL DISTRICT.
- REMOVE EXISTING LOW LEVEL EXIT LIGHTS. VERIFY OPERATION WITH UNIT. VERIFY WITH ARCHITECT AND SCHOOL DISTRICT.
- REMOVE EXISTING LOW LEVEL EXIT LIGHTS. VERIFY OPERATION WITH UNIT. VERIFY WITH ARCHITECT AND SCHOOL DISTRICT.



ELECTRICAL PLANS
UNITS A, B & C

PIONEER DRIVE MODERNIZATION
BAKERSFIELD CITY SCHOOL DISTRICT
BAKERSFIELD, KERN COUNTY, CALIFORNIA

'As Built'

REVISIONS

MARK	DATE	REVISIONS
▲		
▲		
▲		

As Built

5-4-21 As Bldg.

ROBERT F. STUHR ARCHITECT INC.
3121 CALIFORNIA AVE.
BAKERSFIELD, CA 93304
(805) 327-1632

ROBERT F. STUHR, AIA C-1610
WILLIAM J. WELBY, AIA C-16835
DAVANY E. OROZCO, AIA C-14728

Consulting Engineering, Inc.
51927 850th St
Bakersfield, CA 93309
(805) 327-8503

Job No. 061

Sheet No. 2

of 5 SHEETS