

- NOTES**
1. VENTILATING UNIT (N)
  2. REMOVE (E) COUNTER TOP/ SPLASH REPLACE W/ (N) LAM. FLAS.
  3. REMOVE (E) HTR. CUT. CAP & PATCH ALL LINES, VENTS & PENETRATIONS F.V. (E) CONDITIONS.
  4. REMOVE (E) CORROSION REPLACE W/ (N) VINYL COVERED TACKABLE BOARD
  5. (N) CARPET W/ BASE PREPARE (E) SURFACE (E) CHALKBOARD PROTECT
  6. (N) VINYL COVERED WALLBOARD
  7. (N) SHEET VINYL FLOOR PREPARE (E)
  8. REMOVE (E) SHELVING RELOCATE.
  9. (N) ATTRIB
  10. (N) ATTRIB
  11. FILL UP (E) VENT W/ GRANUL. & SAND AS REQUIRED (E) FIN. W/ 4 CONC. SLAB TROWEL SMOOTH TO MATCH (E)
  12. REMOVE (E) METAL WEATHER STRIP
  13. REPLACE W/ NEW
  14. (E) T BAR CLG. REPLACE BROKEN/ STAINED PANELS WITH (N) INSTALL (N) RII INSUL.
  15. (N) 3/4\"/>
  - 16. REMOVE (E) BRANNING POUNTAIN REPLACE

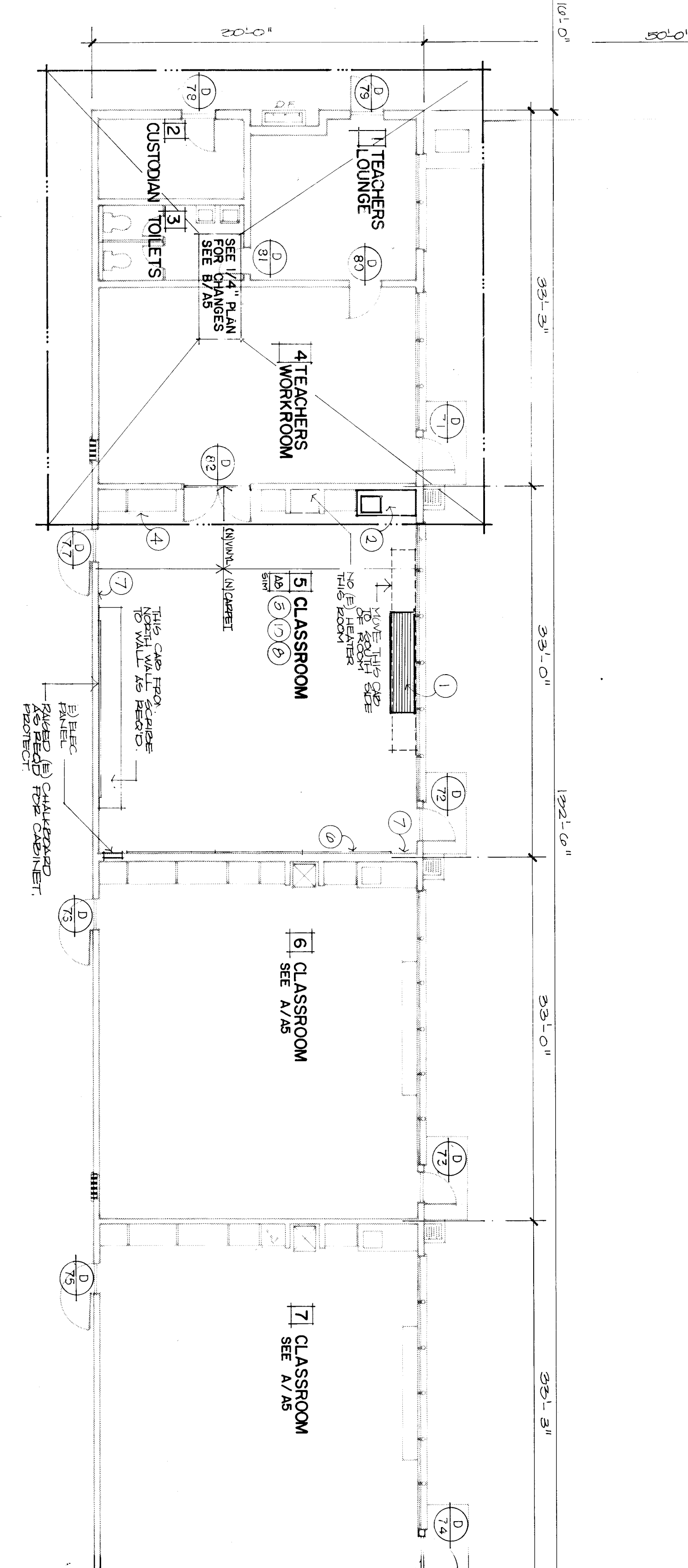
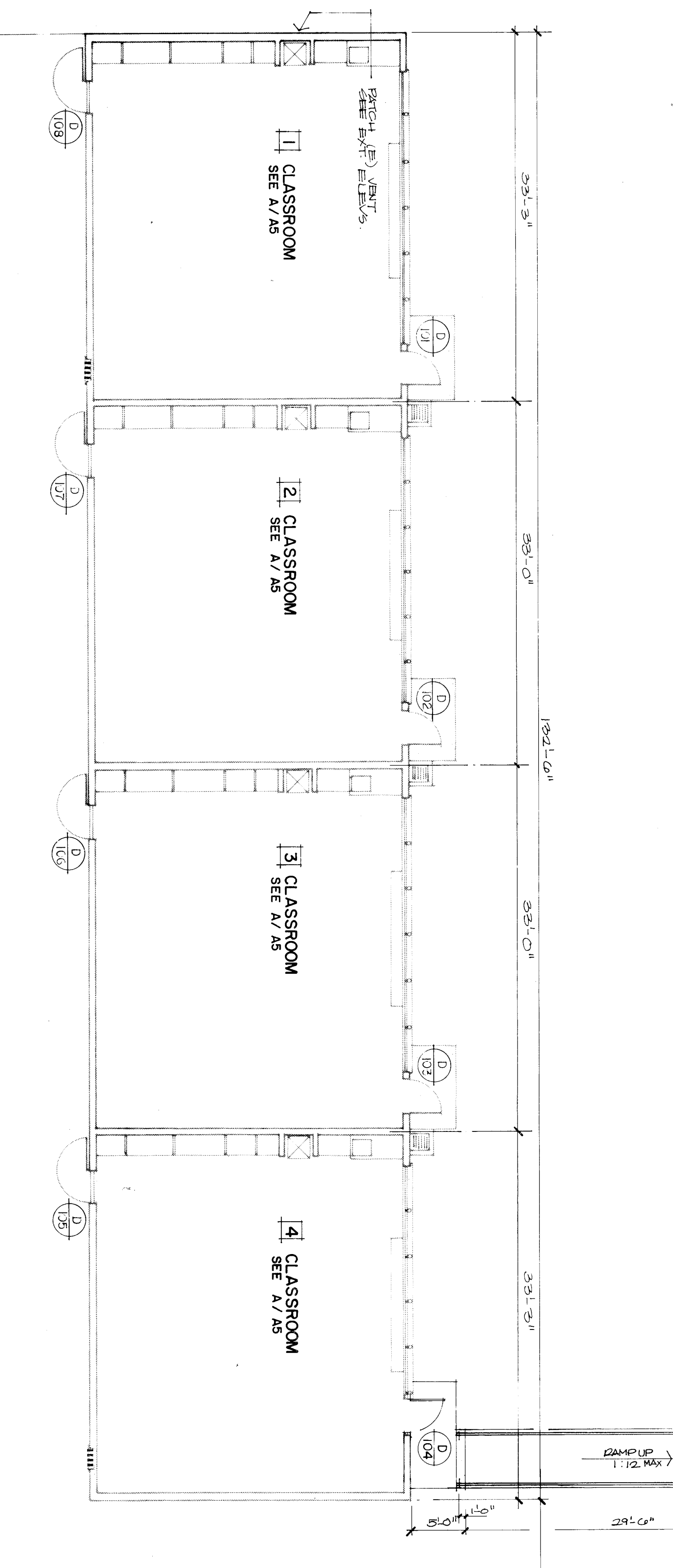
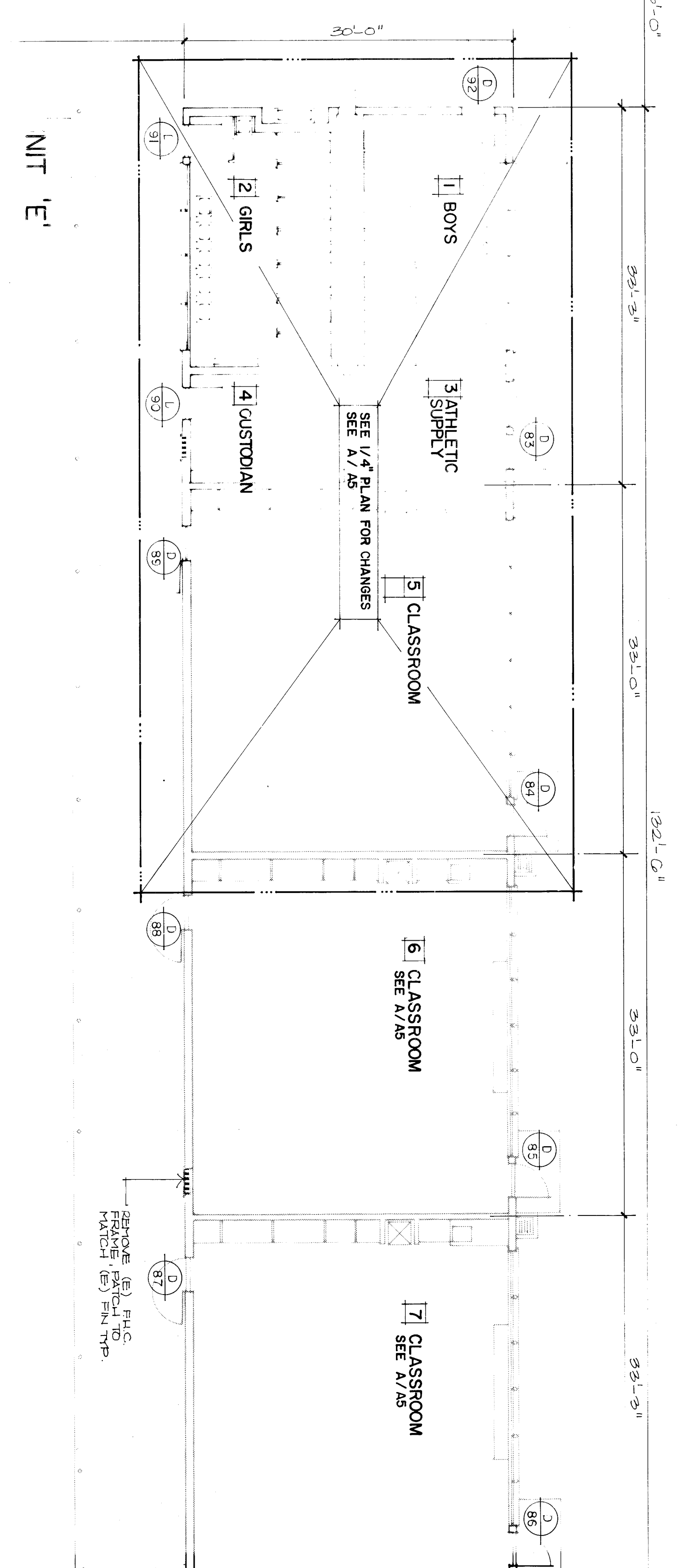
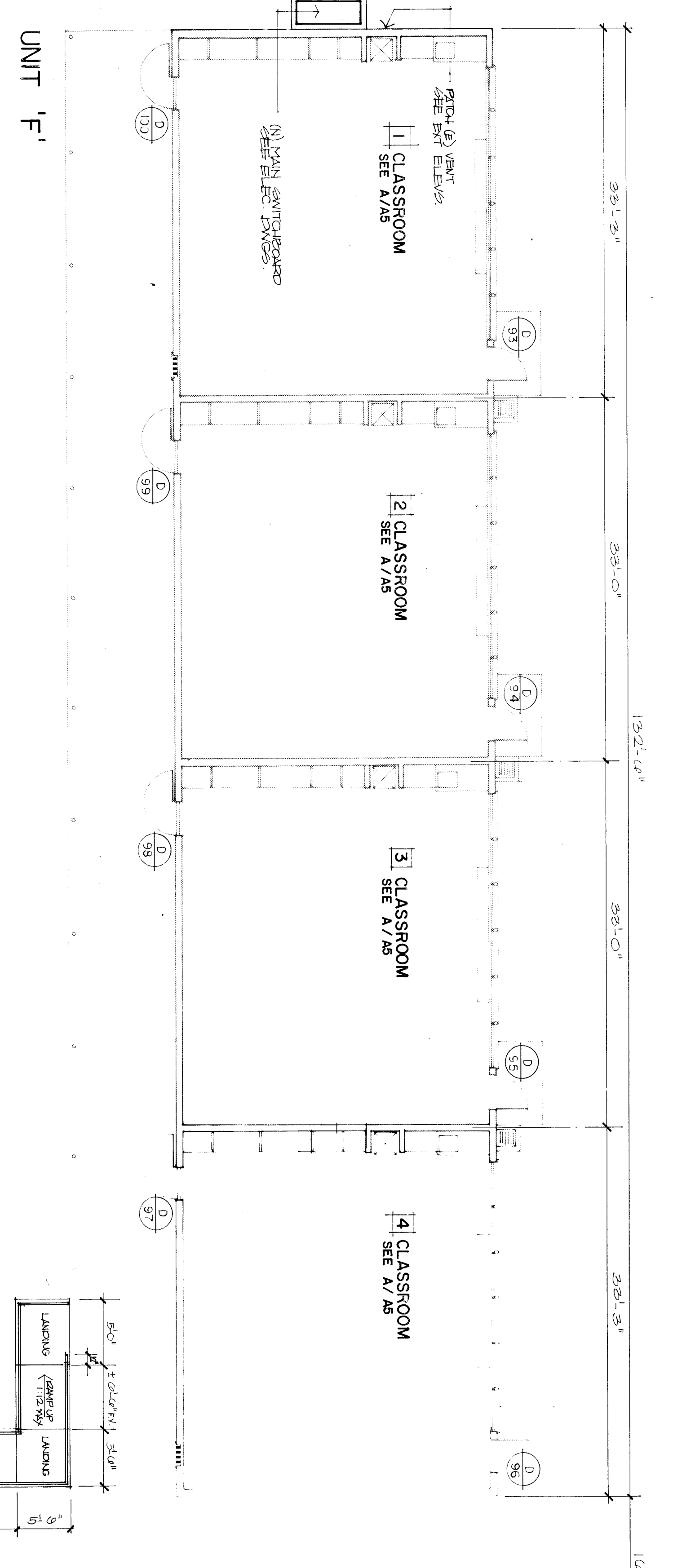
**GENERAL NOTES**

1. ALL HALF-TONES ARE (E) UON.
2. ALL SHADED AREAS THIS SHEET INDICATES NO CHANGE UON.
3. FOR PAINTING INCLUDING SHADED AREAS SEE FINISH SCHEDULE
4. "NO CHANGE" ON SHADED AREAS DO NOT INCLUDE MECH. & ELEC.

ROBERT F. STUHR, AIA C-1610  
 WILLIAM J. MELBY, AIA C-16335  
 DANNY E. ORDOZUA C-14728

3121 CALIFORNIA AVE.  
 BAKERSFIELD, CA 93304  
 (805) 327-1632

ROBERT F. STUHR ARCHITECT INC.



1/8" UNIT PLANS FOR 'D', 'E', 'F' & 'G' / DETAILS

**PIONEER DRIVE SCHOOL MODERNIZATION**  
**BAKERSFIELD CITY SCHOOL DISTRICT**  
 BAKERSFIELD, KERN COUNTY, CALIFORNIA

CHECK AND VERIFY ALL DIMENSIONS BEFORE PROCEEDING WITH THE WORK. PREPARE ALL CONSTRUCTION SHALL CONFORM TO UBC.

MARK	DATE	REVISIONS

JOB NO. 661  
 DRAWN BY EC  
 CHECKED BY  
 DATE

OF SHEETS