

1000-GENERAL NOTES

- REFER TO ELECTRICAL DRAWINGS FOR UNDERGROUND UTILITIES.
- PRIOR TO ANY UNDERGROUND SITE WORK, VERIFY LOCATION OF ALL EXISTING UTILITIES WITH UNDERGROUND SERVICE ALERT (U.S.A.).
- CONTRACTOR SHALL REPLACE IN KIND ANY EXISTING IMPROVEMENTS DAMAGED BY DEMOLITION OR CONSTRUCTION ACTIVITIES.

1100 - KEYNOTES

- 1101 (E) CONCRETE WALK TO REMAIN.
- 1102 (E) CONCRETE CURB TO REMAIN.
- 1103 SAWCUT AND REMOVE (E) CONCRETE CURB AND TRENCH FOR PLACEMENT OF SIGN UTILITIES BELOW GRADE - LOCATE CUTS ON (E) SCORE LINES - SEE ELECTRICAL DRAWINGS FOR MORE INFORMATION
- 1104 BACKFILL AND COMPACT TRENCH, FILL HEIGHT TO MATCH (E) GRADE
- 1105 POUR BACK CONCRETE WALK TO MATCH (E) - DOWEL CONCRETE TOGETHER TYP. SEE DETAIL 1/A1100
- 1106 TRENCH (E) PLANTER AREA TO ROUTE UTILITIES TO PROPOSED SIGN FOOTING - PRESERVE PLANTS FOR REINSTALLATION - SEE ELECTRICAL DRAWINGS FOR MORE INFORMATION
- 1107 PROVIDE POLE MOUNTED DOUBLE-SIDED ELECTRIFIED MARQUEE SIGN - VERIFY PLACEMENT AND ORIENTATION WITH DISTRICT - SEE STRUCTURAL AND ELECTRICAL DRAWINGS FOR MORE INFORMATION
- 1108 REMOVE (E) PLANTING MATERIALS AND 4 INCHES OF TOPSOIL RETAIN FOR RE-INSTALLATION OVER BACKFILLED TRENCH TYPICAL
- 1109 ROUTE CONDUITS ON WALL - SEE ELECTRICAL DRAWINGS.
- 1110 (E) CONCRETE MONUMENT SIGN AND PLANTER CURBS TO REMAIN.
- 1111 (E) PLANTER AREA TO REMAIN.
- 1112 WATER BORE CONDUITS BELOW (E) CONCRETE WALK.
- 1113 POWER & DATA PULL BOXES - SEE ELECTRICAL DRAWINGS.

PRIME CONSULTANT

IBI ARCHITECTURE PLANNING
 San Luis Obispo
 4119 Broad Street, Suite 210
 San Luis Obispo, CA 93401
 805.546.0433 fax: 805.546.0504
 ibigroup.com

SEAL



COPYRIGHT:
 Any reproduction or distribution for any purpose other than authorized by IBI Group is forbidden.

COPYRIGHT 2018 IBI GROUP

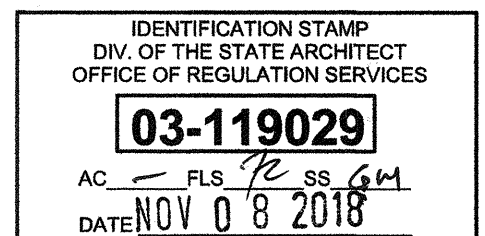
REVISIONS

NO.	DATE	APPRD.	DESCRIPTION
-----	------	--------	-------------

CONSULTANT

AGENCY INFORMATION:

AGENCY TRACKING NO. 63321-329
 FILE NO. 15-6



BAKERSFIELD CITY SCHOOL DISTRICT



PIONEER DRIVE E.S. - MARQUEE SIGN

4404 PIONEER DR, BAKERSFIELD, CA 93306

OPSC or OSHPD PROJ. NO:

PROJECT NO: 17146/109642.CO5

DRAWN BY: Author

CHKD BY: Checker

ISSUE DATE: 09/27/2018

SHEET TITLE

OVERALL & PARTIAL SITE PLANS

SHEET NUMBER

A1100

ThinkSIGN

6708 Grade Lane, Suite 706, Louisville, Kentucky 40213

Date: 04/03/18

Marcus Barron/Vital Signs of Bakersfield

6703 Rosedale Hwy

Bakersfield CA 93308

Projects:

Pioneer Drive Elementary School

4404 Pioneer Drive, Bakersfield CA

Longfellow Elementary School

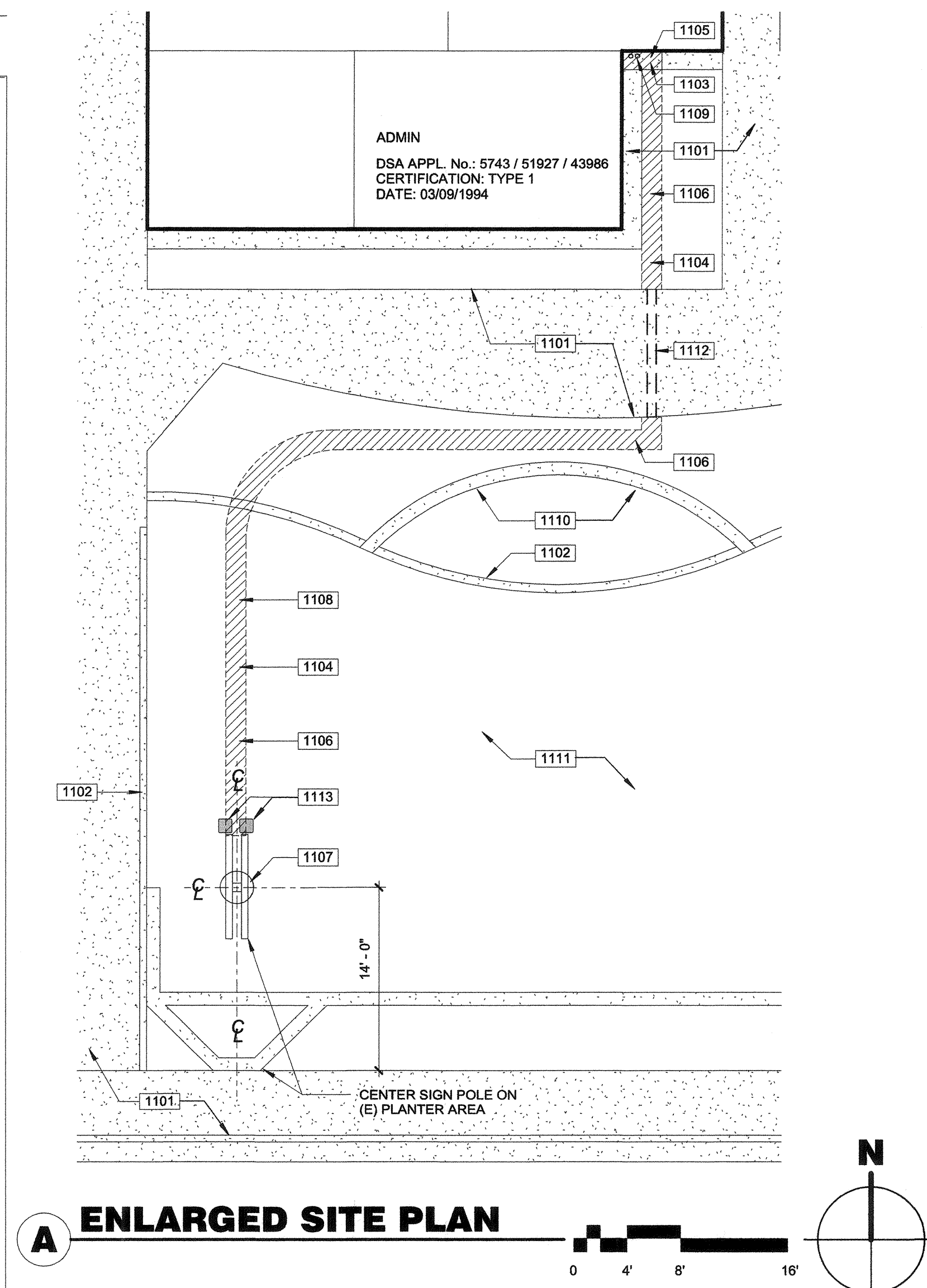
1900 Stockton Street, Bakersfield CA

All Think Sign EMC's including these projects are designed and build to 2016 CBC at 150 mph w 3 sec gust wind load with an exposure C.

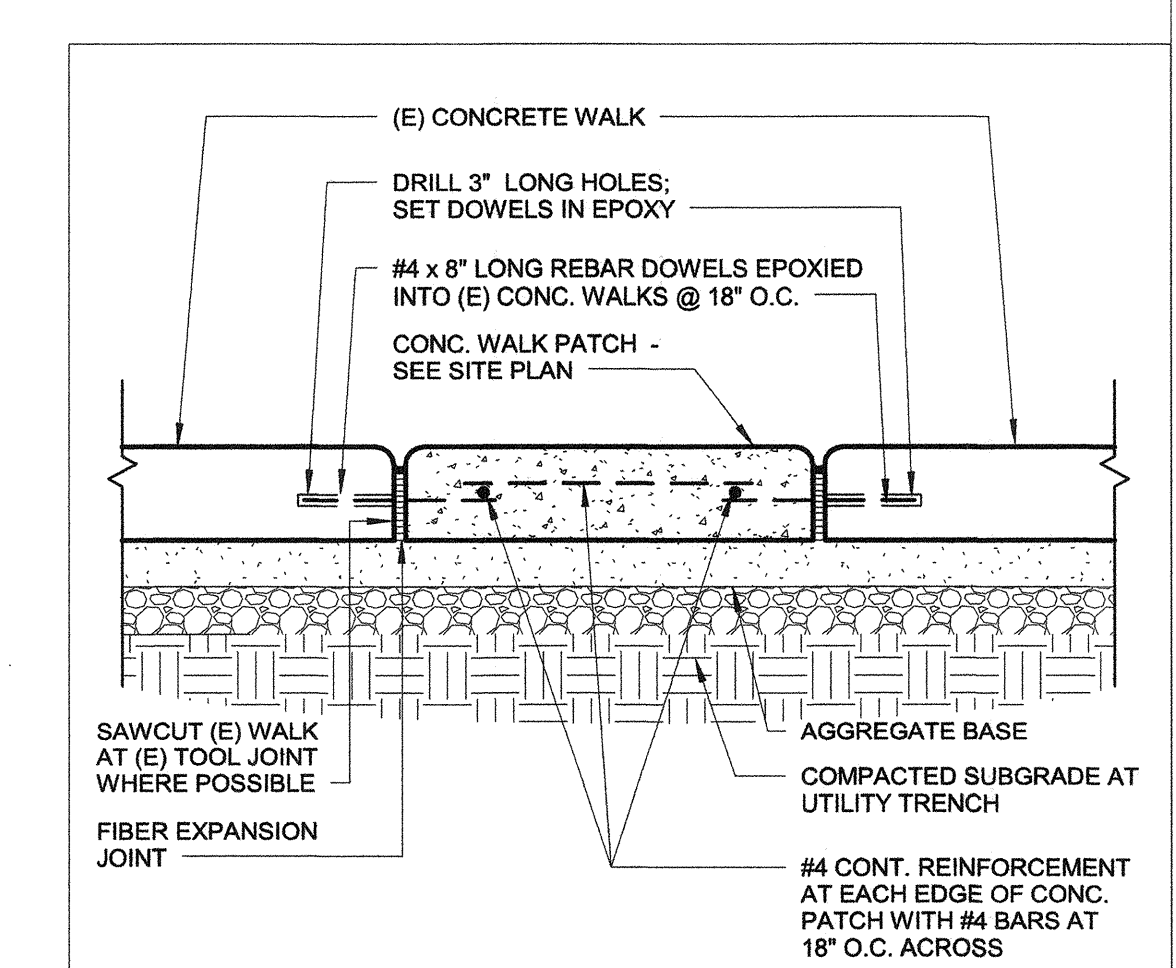
Paul Cummings

Regional Sales Manager

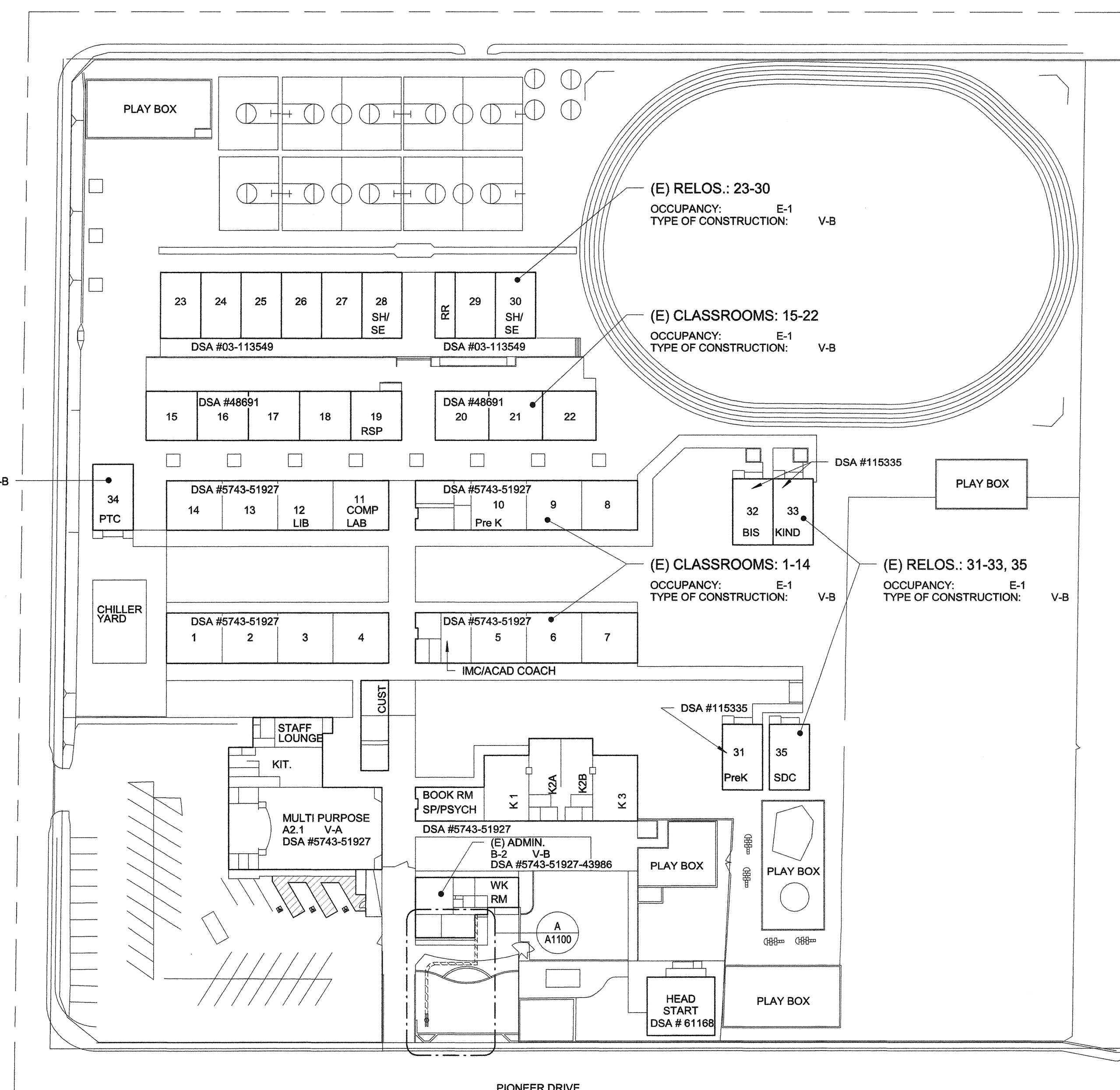
04/03/18



A ENLARGED SITE PLAN



1 CONC. TO (E) CONC. 1 1/2" = 1'-0"



OVERALL SITE PLAN

PLOT DATE: 11/7/2018 6:02:57 PM S:\17146_BC_Marquee\5.9 Drawings\BArch\document\TV_2018-02-23_PIONEER DRIVE-V2018.rvt