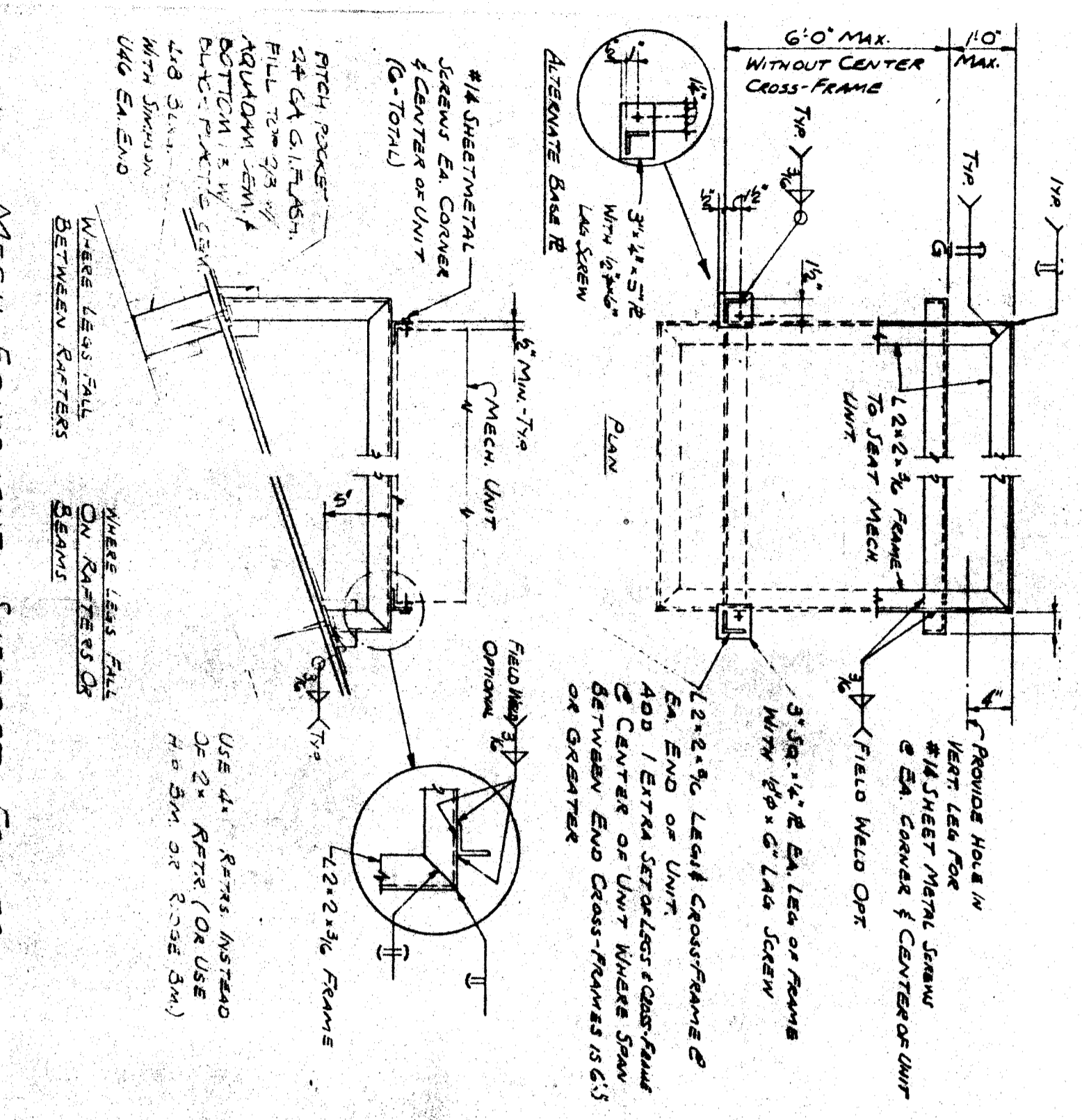


THESE DRAWINGS AND SPECIFICATIONS ARE IDEAL, SOUND AND ANTI-CORROSION PROTECTIVE. THE CONTRACTOR SHALL BE RESPONSIBLE FOR THE PROTECTION OF THE WORKMANSHIP AND MATERIALS. THE CONTRACTOR SHALL BE RESPONSIBLE FOR THE PROTECTION OF THE WORKMANSHIP AND MATERIALS. THE CONTRACTOR SHALL BE RESPONSIBLE FOR THE PROTECTION OF THE WORKMANSHIP AND MATERIALS.

1 MECHANICAL EQUIP. SUPPORT FRAME NO SCALE



REGISTER SCHEDULE

MARK	Q1-A10	REGISTER
Q2	K10-A-40	REGISTER
Q3	Q200-20	REGISTER
Q4	Q200-20	REGISTER

EXHAUST FAN SCHEDULE

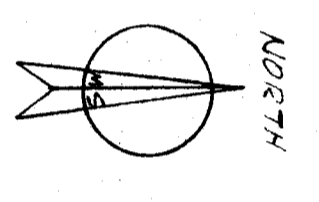
MARK	Q10-A-10	EXHAUST FAN
Q2	Q10-A-10	EXHAUST FAN
Q3	Q10-A-10	EXHAUST FAN

EVAPORATIVE COOLER SCHEDULE

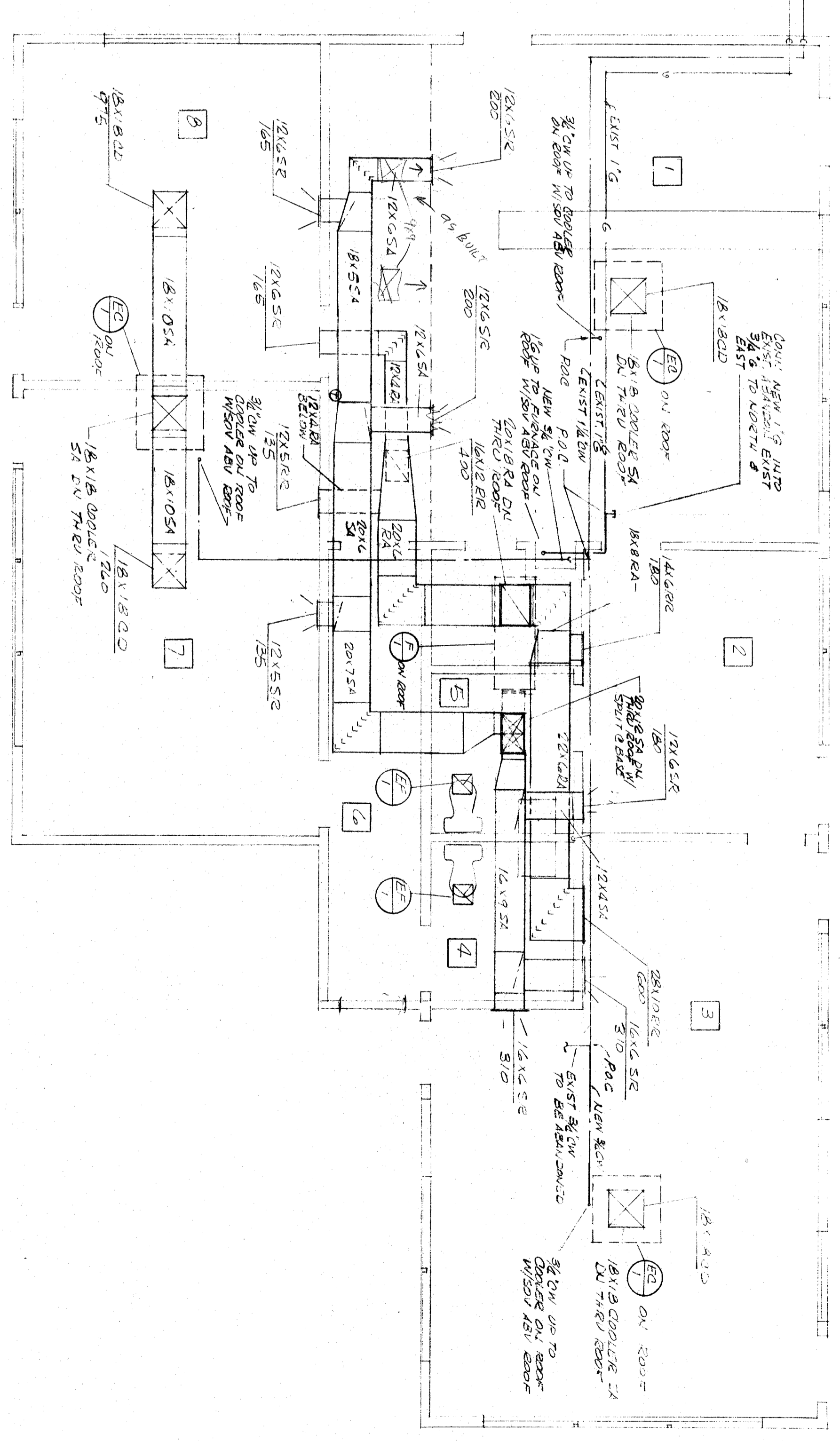
MARK	Q10-A-10	EVAPORATIVE COOLER
Q2	Q10-A-10	EVAPORATIVE COOLER
Q3	Q10-A-10	EVAPORATIVE COOLER

FURNACE SCHEDULE

MARK	Q10-A-10	FURNACE
Q2	Q10-A-10	FURNACE
Q3	Q10-A-10	FURNACE



HEATING & EVAPORATIVE COOLING PLAN
 SCALE 1/8" = 1'-0"



EQUIPMENT ANCHORAGE
 All mechanical equipment shall be braced or anchored to resist a horizontal force acting in any direction using the following criteria:
 1. Fixed Equipment on Grade - 20% of Operating Weight
 2. Fixed Equipment on Roof - 30% of Operating Weight
 3. Emergency Power Equipment on Grade - 50% of Operating Weight
 4. Emergency Power Equipment on Roof - 75% of Operating Weight
 For Flexibly Mounted Equipment Use 2 X Horizontal Values. Simultaneous Vertical Force are not shown on the drawings. Field installation shall be subject to the approval of the Office of the State Architect.

APPROVED: [Signature] DATE: [Date]