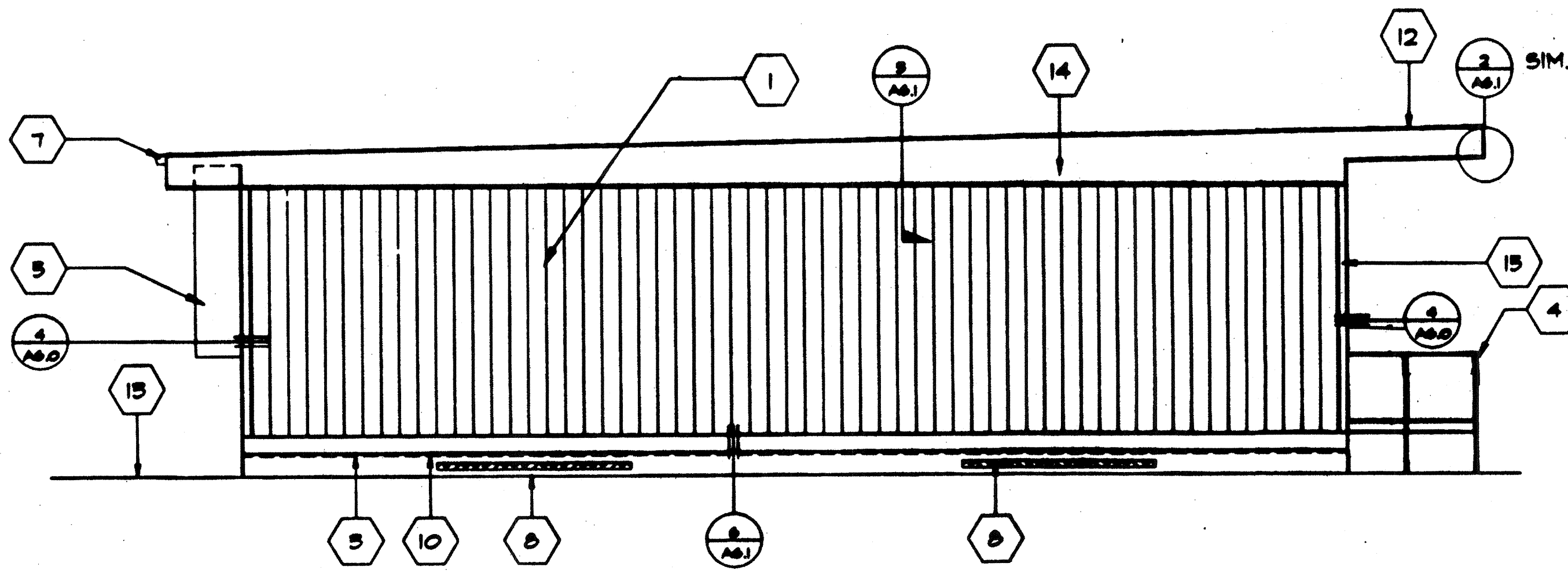


① FRONT ELEVATION

SCALE 1/4"=1'-0"



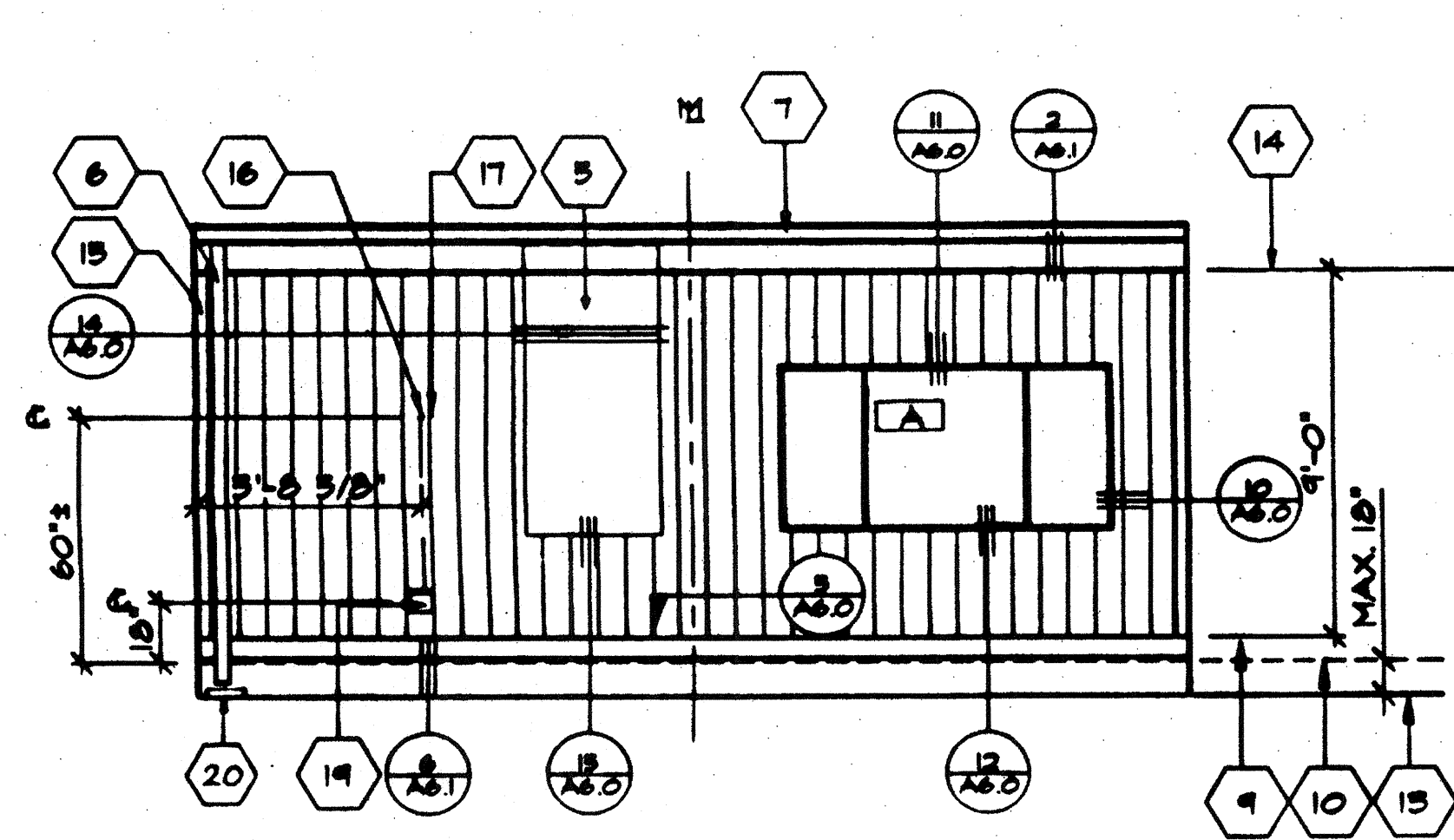
② SIDE ELEVATION (LEFT)

SCALE 1/4"=1'-0"

KEY NOTES

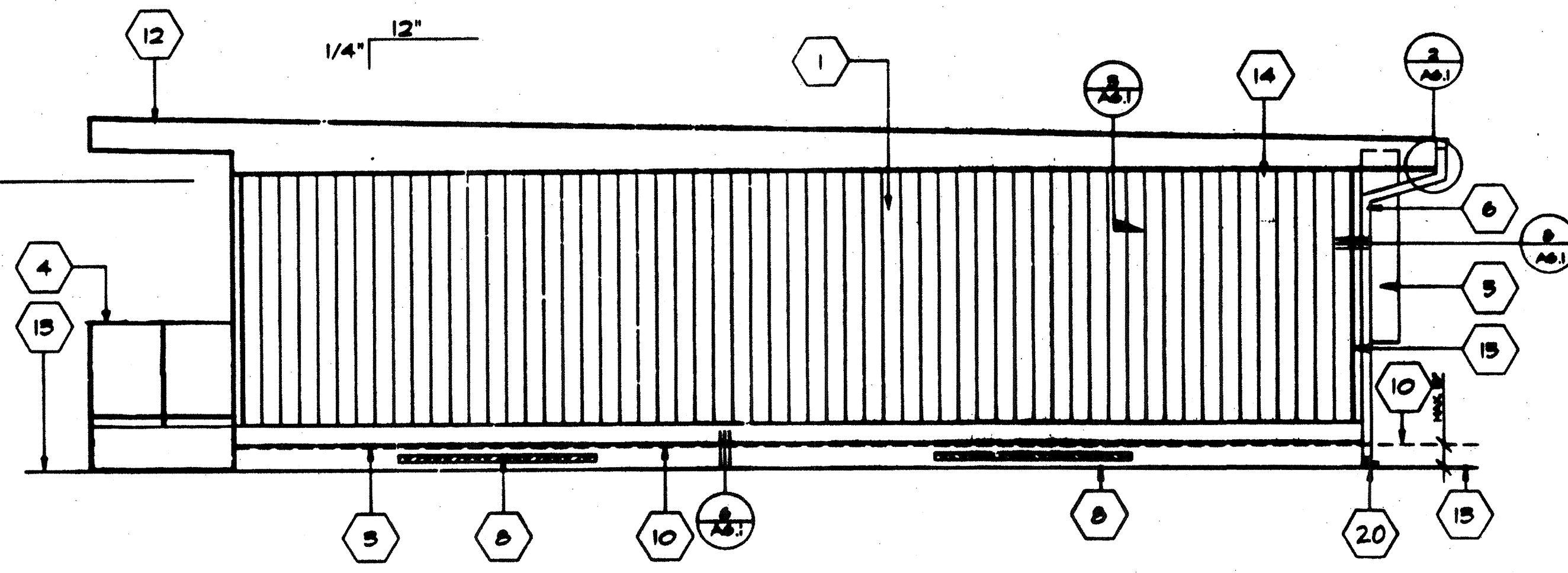
- ① TYPICAL EXTERIOR SIDING (SEE SPEC'S)
- ② EXTERIOR LIGHT FIXTURE OVER DOOR (SEE SPECIFICATIONS)
- ③ TOP OF SKIRTING
- ④ RAMP AND LANDING SEE SH. R-1
- ⑤ HVAC UNIT [HV]
- ⑥ DOWNSPOUT (TYP.) ONE FASTEN TO BLDG. TYP. 2 PLACES (SEE D/A6.1)
- ⑦ CONTINUOUS GUTTER WITH DOWNSPOUT (LOCATION OF DOWNSPOUT SHOW ON ROOF PLAN A2.0) SEE 9/A6.1
- ⑧ VENT-SEE FOUNDATION DETAILS 5/FA11
- ⑨ FINISH FLOOR LINE
- ⑩ BOTTOM FLANS OF FLOOR BEAM
- ⑪ ROOF HEADER
- ⑫ ROOF OVERHANG
- ⑬ FINISH GRADE
- ⑭ ROOF BEAM [ST]
- ⑮ COLUMN [ST]
- ⑯ ELECTRICAL STUB-OUT 1/2" (TYPICAL)
- ⑰ GROUND STUB-OUT 3/4" (TYPICAL)
- ⑱ FIRE ALARM HORN. [EL]
- ⑲ NEMA 6"x6" GUTTER BOX. [EL]
- ⑳ SPLASH BLOCK (BY OTHERS)

FILE #15-6
 IDENTIFICATION STAMP
 DIV. OF THE STATE ARCHITECT
 OFFICE OF REGULATION SERVICES
 03-118271
 AC. FLS. SS
 DATE: NOV 14 2009
 TRACKING #: 63321-294



③ REAR ELEVATION

SCALE 1/4"=1'-0"



④ SIDE ELEVATION (RIGHT)

SCALE 1/4"=1'-0"

(MONO SLOPE)

SCALE 1/4"=1'-0"

C.LLS. 033 4012-074

REVISIONS	ELECTRICAL	MECHANICAL	STRUCTURAL	ARCHITECT	DIVISION OF THE STATE ARCHITECT

MODTECH INC.
 2830 BARRETT AVE.
 PERRIS, CA. 92572
 PH. (909) 943-4014
 FX. (909) 940-0427

CONFIDENTIAL - THIS DOCUMENT AND THE INFORMATION CONTAINED HEREIN ARE THE PROPERTY OF MODTECH INC. UNAUTHORIZED COPYING, REPRODUCTION, OR OTHER UNAUTHORIZED USES ARE PROHIBITED.

JOB NO # 2510 #2514 #2515

DATE 2/7/96

CHECKED BY

DATE

EXTERIOR ELEVATIONS

A3.0