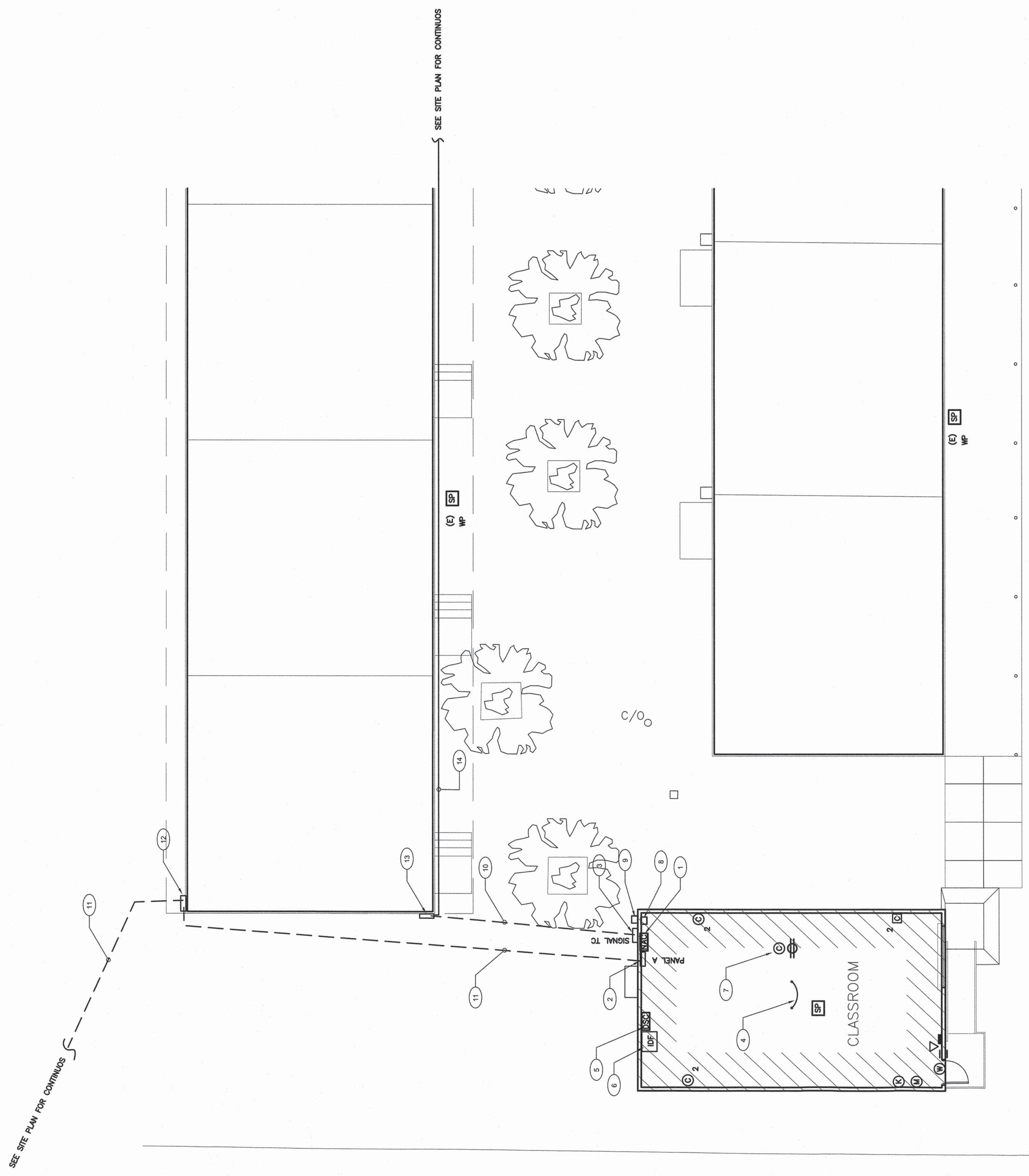


POWER AND SIGNAL PLAN
1 RELOCATABLE CLASSROOM

SCALE : 1/8" = 1' - 0"



- SIGNAL AND COMM. LEGEND**
- SECURITY-ALARM SYSTEM**
- DSZ - DATA SECURITY ALARM CONTROL PANEL, MODEL NUMBER (AS REQUIRED) WITH EXISTING BUILDING MASTER SECURITY ALARM PANEL AS REQUIRED.
 - K - LEO KEYPAD - MATCH EXISTING EQUIPMENT AS REQUIRED.
 - M - DUAL TECHNOLOGY CEILING MOUNT DETECTOR, MATCH EXISTING EQUIPMENT AS REQUIRED.
 - B - EXTERIOR BELL (SIREN) - 120V/240V WITH WEATHERPROOF HOUSING AND PAINTER SWITCH.
 - N - DOOR CONTACT SWITCH, RECESS ABOVE DOOR JAMB AT OPEN SIDE.
 - B - INDOOR SECURITY ALARM CABLE, WEST PENN #40224
 - B1 - OUTDOOR SECURITY ALARM CABLE, WEST PENN #40224
- COMMUNICATION TELEPHONE/AUTORECALL SYSTEM**
- H - HANDSET/FP PHONE - FIELD VERIFY MODEL NO. AND MATCH EXISTING MASTER EQUIPMENT AS REQUIRED.
 - SP - CEILING SPEAKER - ATLAS #AP15 HORN W/20RM AND LOWELL #A384 FOR SURFACE, #PRT2X FOR RECESS) BACK BOX W/SALK GRILL
- MP**
- T - OUTDOOR TELEPHONE CABLE, 22AWG SOLID COPPER, 12 PAIR SHIELDED AND 12 PAIR UNSHIELDED CABLE.
 - T1 - INDOOR TELEPHONE CABLE, CAT.3 22AWG SOLID COPPER, 4UTP SHIELDED CABLE.
 - P1 - OUTDOOR P/V/C CABLE - WEST PENN #40C-369
- DATA COMMUNICATION SYSTEM**
- E2 - DATA OUTLET - LEVITON CAT 5E (DUAL RECEPTACLE RED IN COLOR AND 12 POSITION CAT 5E (DUAL RECEPTACLE BLUE IN COLOR FOR INSTRUCTIONAL)
 - FO - FIBER OPTIC CABLE VIA INNER DUCT WITH J-HOOK IN ATIC AND 2'C FOR OUTDOOR. SEE RISER DIAGRAM FOR MODEL NO.
 - C1 - (ONE) CAT 5E 22AWG 4UTP. SEE RISER DIAGRAM FOR MODEL NO.
 - C2 - (TWO) CAT 5E 22AWG 4UTP. SEE RISER DIAGRAM FOR MODEL NO.
- NOTES:**
1. ALL SIGNAL CONDUCTORS CANNOT SPLICE INSIDE PULL BOX. CONDUCTOR MUST BE CONTINUE RUN BETWEEN SIGNAL DEVICES BACK BOX OR ABOVE GROUND TERMINAL CABINET.

SIGNAL AND COMM. LEGEND

- SHEET NOTES**
1. NEW FIRE ALARM SIGNAL BOOSTER PANEL, PROVIDE 110V BOND TO EXISTING ELECTRICAL PANEL. FIELD VERIFY EXACT LOCATION WITH OWNER PRIOR TO INSTALLATION. SEE RISER DIAGRAM.
 2. PROVIDE POWER CONNECTION FOR RELOCATABLE BUILDING PRE-WIRED PANEL. SEE SINGLE LINE DIAGRAM ON DRAWING E-4.
 3. PROVIDE NEW SIGNAL TL, 24"x24"x7D, NEWMARK SURFACE MOUNT ON CEILING. PROVIDE 110V BOND TO EXISTING ELECTRICAL PANEL. FIELD VERIFY EXACT LOCATION WITH OWNER PRIOR TO INSTALLATION. SEE RISER DIAGRAM.
 4. PROVIDE #6 COPPER GROUNDING CONDUCTOR AND BOND TO EACH SECTION STRUCTURAL STEEL BEAM, FIELD VERIFY EXACT LOCATION WITH GENERAL CONTRACTOR PRIOR TO INSTALLATION.
 5. NEW SECURITY ALARM PANEL AND SYSTEM, PROVIDE 110V POWER CONNECTION, DATA SWITCH, FO CABLE AND DATA CABLE PATCH PANEL FOR NEW DATA OUTLET CONNECTION. PROVIDE FO CABLE TO (E) DATA OUTLET. FIELD VERIFY EXACT LOCATION AND REQUIREMENT WITH OWNER PRIOR TO INSTALLATION. SEE RISER DIAGRAM.
 6. NEW UF AND CABINET SURFACE MOUNTED BELOW CEILING. PROVIDE 110V POWER CONNECTION, DATA SWITCH, FO CABLE AND DATA CABLE PATCH PANEL FOR NEW DATA OUTLET CONNECTION. PROVIDE FO CABLE TO (E) DATA OUTLET. FIELD VERIFY EXACT LOCATION AND REQUIREMENT WITH OWNER PRIOR TO INSTALLATION. SEE RISER DIAGRAM.
 7. DATA AND POWER OUTLET AT CEILING FOR SMART BOARD, FIELD VERIFY EXACT LOCATION AND REQUIREMENT WITH OWNER PRIOR TO INSTALLATION. SEE RISER DIAGRAM.
 8. PROVIDE 50 PHS PUNCH DOWN BLOCK AND SURFACE MOUNTED BELOW CEILING FOR INTERCOM / TELEPHONE WIRING TERMINATION.
 9. PROVIDE NEW FA PULL CAN, SEE DRAWING E-3 FOR MORE INFORMATION.
 10. PROVIDE NEW SIGNAL UNDERGROUND CONDUITS AND WIRING, SEE SIGNAL RISER DIAGRAMS.
 11. PROVIDE NEW UNDERGROUND POWER CONDUITS AND WIRING, SEE SINGLE LINE DIAGRAM.
 12. 24"x24"x7D NEWMARK NEW PULL CAN SURFACE MOUNTED ON EXTERIOR WALL AT 42" AFF. FOR NEW POWER CONDUIT. FIELD VERIFY LOCATION.
 13. 24"x24"x7D NEWMARK NEW PULL CAN SURFACE MOUNTED ON EXTERIOR WALL AT 42" AFF. INSTALL NEW CONDUITS AND WIRING FOR RISER CONDUIT RACEWAY. PROVIDE PUNCH DOWN BLOCK, FA TERMINAL STRIP AND DIVIDER INSIDE TC.
 14. NEW SIGNAL CONDUIT RACEWAY ON EXTERIOR WALL, FIELD VERIFY LOCATION. PROVIDE UNBROTT FOR SUPPORT.

POWER AND SIGNAL PLAN

Sheet Title: 00/00/14
 Date: 03/14/14
 Designer: J CHONG
 DR: J CHONG
 PC: JMF

Project Name & Address: 1 RELOCATABLE CLASSROOM
 BAKERSFIELD CITY SCHOOL DISTRICT
 4404 PIONEER DR., BAKERSFIELD, CA 93306

Agency Approval Stamp:
 IDENTIFICATION STAMP
 BY: OF THE STATE ARCHITECT
 APPRCS 115740
 AC: FISCHER
 DATE: MAY 14 2014

Job No.: 5117
 Sheet No.: E-2

Ownership of Documents:
 This document, the ideas and designs incorporated herein, as an instrument of service, is the property of Integrated Designs by SOMAM, Inc. and is not to be used, in whole or in part for any other project without written authorization.
 © COPYRIGHT 2013

ARCHITECTURE · ENGINEERING · INTERIOR DESIGN · CONSTRUCTION MANAGEMENT by SOMAM, Inc.
 6011 N. Fresno, Suite 130 - Fresno, California 93710
 Phone (509) 436-0881 Fax (509) 436-0881 E-Mail: design@somam.com
 www.integrateddesigns.com

CONSULTING ENGINEERS
 JOHN CHONG ENGINEERING
 JOHN S. CHONG
 E 14419
 Exp. 8/30/2014
 MECHANICAL ELECTRICAL
 2071 E. LEGATOR AVE. FRESNO CA 93720
 (509) 395-2998 • FAX 357-9441
 jchong1nres@aol.com

3/18/2014 3:42:15 PM