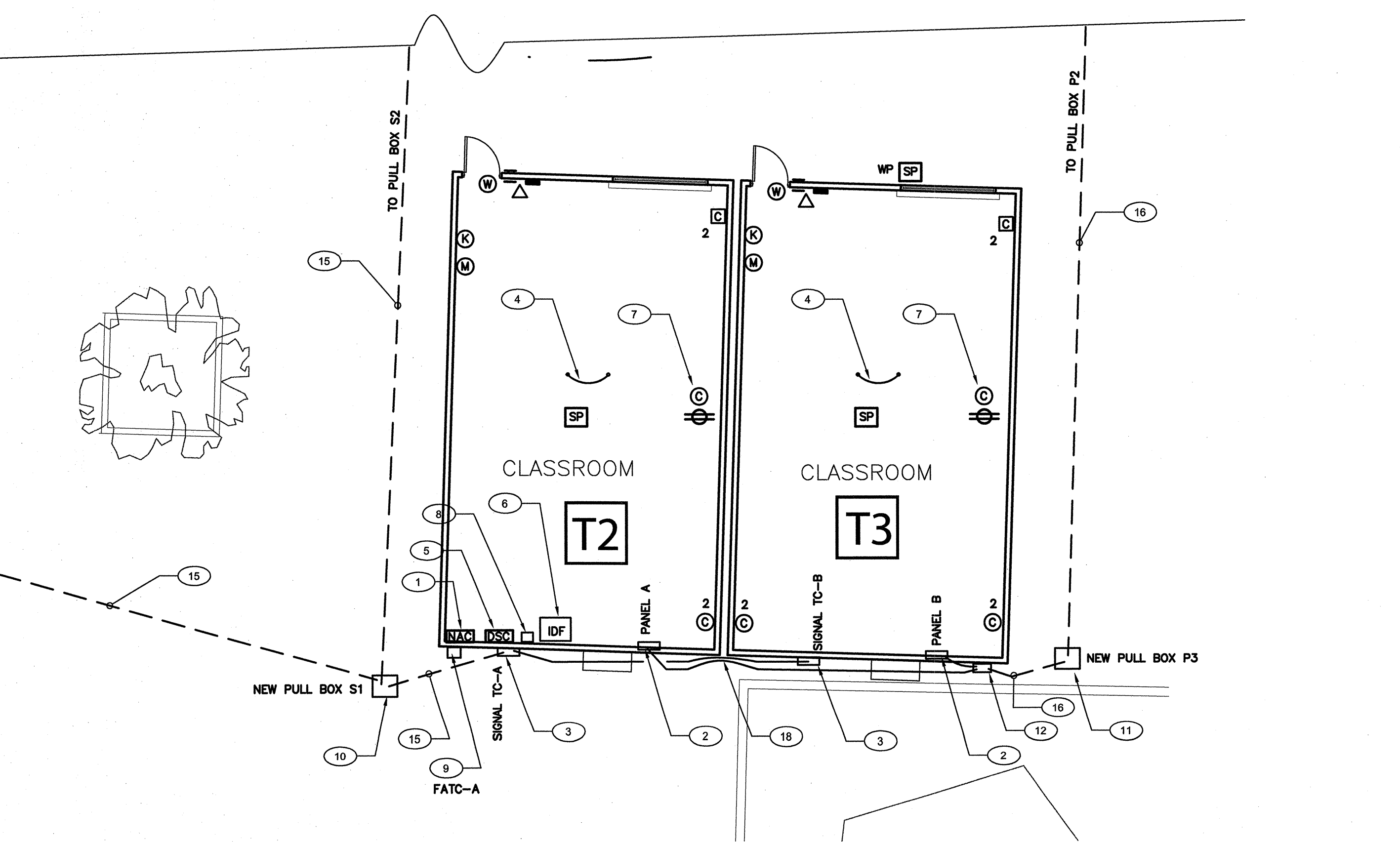
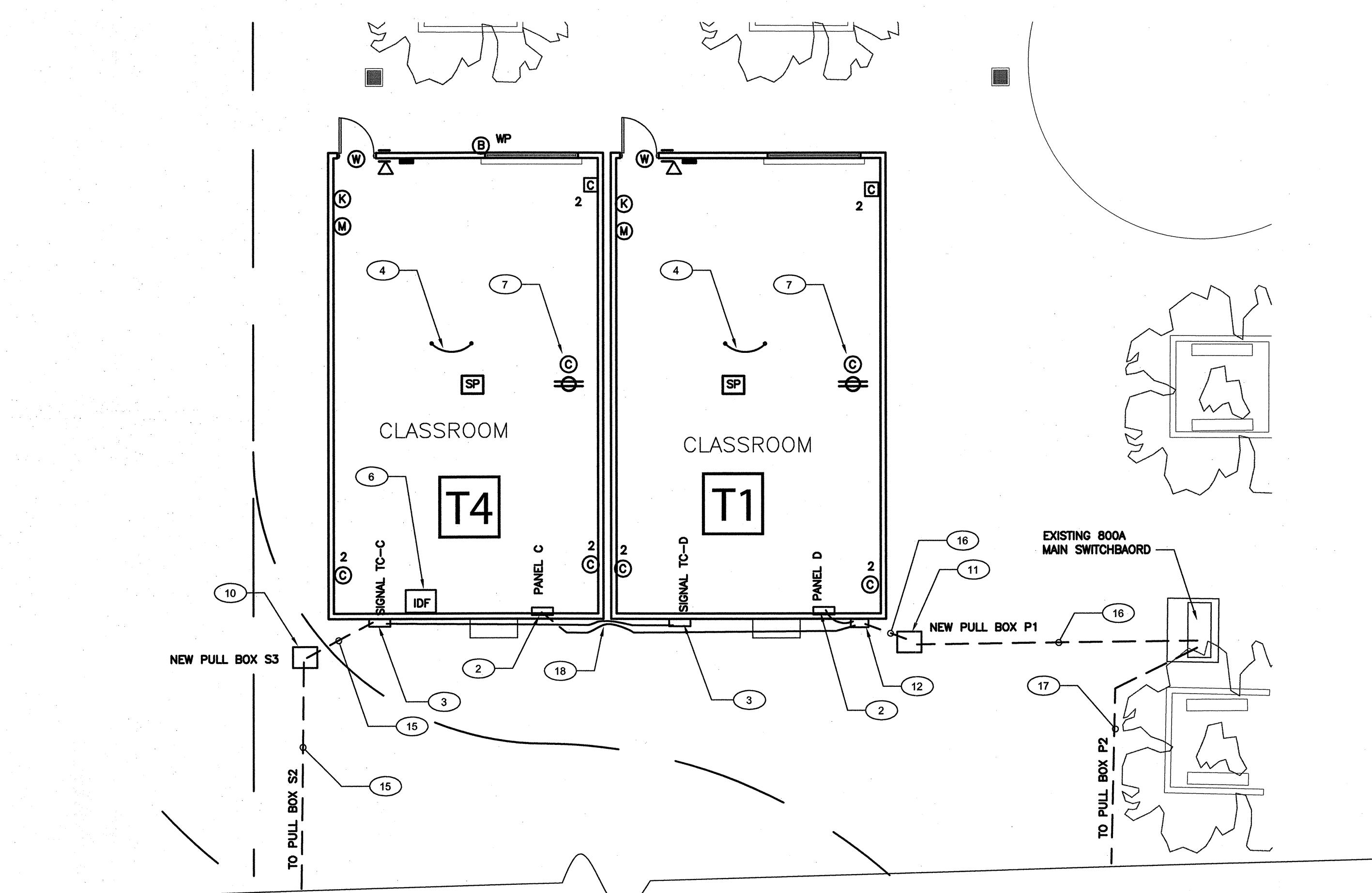


**POWER AND SIGNAL PLAN**  
**4 RELOCATABLE CLASSROOMS**

SCALE : 1/8" = 1' - 0"



**SIGNAL AND COMM. LEGEND**

- SECURITY ALARM SYSTEM**
- DSC** DIGITAL SECURITY ALARM CONTROL PANEL, MODEL SONTROL (64ZONE), INTERFACE WITH EXISTING BUILDING MASTER SECURITY ALARM PANEL AS REQUIRED.
  - K** LKD KEYPAD - MATCH EXISTING EQUIPMENT AS REQUIRED.
  - M** DUAL TECHNOLOGY CEILING MOUNT DETECTOR, MATCH EXISTING EQUIPMENT AS REQUIRED.
  - B** EXTERIOR BELL (SIREN) - DSC#SD15W WITH WEATHERPROOF BACKBOX AND TAMPER SWITCH.
  - W** DOOR CONTACT SWITCH, RECESS ABOVE DOOR JAMB AT OPEN SIDE.
  - B** INDOOR SECURITY ALARM CABLE, WEST PENN #241
  - B1** OUTDOOR SECURITY ALARM CABLE, WEST PENN #AQC224
- COMMUNICATION (TELEPHONE/INTERCOM) SYSTEM**
- ▽** HANDSET/TP PHONE - FIELD VERIFY MODEL NO. AND MATCH EXISTING MASTER EQUIPMENT AS REQUIRED.
  - SP** CEILING SPEAKER - RAULAND #J0221 W/ACC1000 BAFFLE, PROVIDE BACKBOX AND CEILING SUPPORT AS REQUIRED.
  - WP** OUTDOOR SPEAKER - ATLAS #AF15 HORN W/FAIR AND LOWELL (#C884 FOR SURFACE, #875X FOR RECESS) BACK BOX W/SOLK GRILL
  - T** OUTDOOR TELE/C CABLE, 22AWG SOLID COPPER 12 PAIR SHIELDED AND 12 PAIR UNSHIELDED CABLE.
  - T1** INDOOR TELEPHONE CABLE, CAT.3 22AWG SOLID COPPER 4UTP SHIELDED CABLE.
  - P1** OUTDOOR PA/C CABLE - WEST PENN #AQC-369
- DATA COMMUNICATION SYSTEM**
- 2** DATA OUTLET - LEVITON CAT 5E (DUAL RECEPTACLE RED IN COLOR FOR ADMINISTRATIVE)
  - 2** DATA OUTLET - LEVITON CAT 5E (DUAL RECEPTACLE BLUE IN COLOR FOR INSTRUCTIONAL)
  - FO** FIBER OPTIC CABLE VIA INNER DUCT WITH J-HOOK IN ATTIC AND 2" C FOR OUTDOOR. SEE RISER DIAGRAM FOR MODEL NO.
  - C1** (ONE) CAT 5E 22AWG 4UTP. SEE RISER DIAGRAM FOR MODEL NO.
  - C2** (TWO) CAT 5E 22AWG 4UTP. SEE RISER DIAGRAM FOR MODEL NO.
- NOTES:**
- ALL SIGNAL CONDUCTORS CANNOT SPLICE INSIDE PULL BOX. CONDUCTOR MUST BE CONTINUE RUN BETWEEN SIGNAL DEVICES BACK BOX OR ABOVE GROUND TERMINAL CABINET.

**SHEET NOTES**

- NEW FIRE ALARM DISTRIBUTED POWER MODULE, PROVIDE 110V DEDICATE CIRCUIT AND CONNECTION FROM PANEL D, PROVIDE LOCKING DEVICE ON CIRCUIT BREAKER. SEE DRAWING E-3 FOR MORE INFORMATION.
- PROVIDE POWER CONNECTION FOR RELOCATABLE BUILDING PRE-WIRED PANEL. SEE SINGLE LINE DIAGRAM ON DRAWING E-4.
- PROVIDE NEW SIGNAL TC, 24"x24"x6"D, NEMA3R, SURFACE MOUNT ON EXTERIOR AT +24" AFF. PROVIDE (2) 2"Ø EXT AND STUD INTO BUILDING CEILING CAVITY WITH LB ELBOW FOR SIGNAL WIRING RACEWAY. CORE DRILL AND SEAL EXTERIOR WALL AS REQUIRED. PULL BACK PA/C/TELE CABLE TO BOOK ROOM MASTER EQUIPMENT FOR NEW DEVICES CONNECTION. SEE RISER DIAGRAMS.
- PROVIDE #6 COPPER GROUNDING CONDUCTOR AND BOND TO EACH SECTION STRUCTURAL STEEL BEAM, FIELD VERIFY EXACT LOCATION WITH GENERAL CONTRACTOR PRIOR TO INSTALLATION.
- NEW SECURITY ALARM PANEL AND SYSTEM, PROVIDE 110V POWER CONNECTION AND INTERCONNECTION TO (E) MASTER EQUIPMENT IN ADMIN OFFICE. FIELD VERIFY EXACT LOCATION AND REQUIREMENT WITH OWNER PRIOR TO INSTALLATION. SEE RISER DIAGRAM.
- NEW IDF AND CABINET SURFACE MOUNTED BELOW CEILING, PROVIDE 110V POWER CONNECTION, DATA SWITCH, FO CABLE AND DATA CABLE PATCH PANEL FOR NEW DATA OUTLET CONNECTION, PROVIDE FO CABLE TO (E) IDF IN ADMIN OFFICE FOR INTERCONNECTION. FIELD VERIFY EXACT LOCATION AND REQUIREMENT WITH OWNER PRIOR TO INSTALLATION. SEE RISER DIAGRAM.
- DATA AND POWER OUTLET AT CEILING FOR SMART BOARD, FIELD VERIFY EXACT LOCATION AND REQUIREMENT WITH OWNER PRIOR TO INSTALLATION. SEE RISER DIAGRAM.
- PROVIDE 50 PAIR PUNCH DOWN BLOCK AND SURFACE MOUNTED BELOW CEILING FOR INTERCOM / TELEPHONE WIRING TERMINATION.
- PROVIDE NEW FA PULL CAN, SEE DRAWING E-3 FOR MORE INFORMATION.
- PROVIDE NEW CHRISTY MDO SIGNAL PULL BOX, AND NEW UNDERGROUND CONDUITS AND WIRING, SEE SIGNAL RISER DIAGRAMS.
- PROVIDE NEW CHRISTY MDO POWER PULL BOX, AND NEW UNDERGROUND CONDUITS AND WIRING, SEE SINGLE LINE DIAGRAM.
- 24"x24"x6" NEMA3R NEW PULL CAN SURFACE MOUNTED ON EXTERIOR WALL AT +24" AFF. INSTALL NEW CONDUITS AND WIRING PRE SINGLE LINE DIAGRAMS. PROVIDE FIBER OPTIC CABLE SPLICE PANEL, 50 PAIR PUNCH DOWN BLOCK, FA TERMINAL STRIP AND DWIGER INSIDE TC.
- NEW (2) 2"Ø EXT CONDUIT RACEWAY ON EXTERIOR WALL FOR EXISTING AERIAL SIGNAL CABLE RE PULL. PROVIDE UNISTRUT FOR MOUNTING.
- INTERCEPT EXISTING AERIAL SIGNAL CABLE RISER AND INSTALL SIGNAL TC WITH NEW CONDUITS RACEWAY PER PLANS. FIELD VERIFY LOCATION. PROVIDE UNISTRUT FOR SUPPORT.
- SAW CUT AND PATCH EXISTING FLOOR TO INSTALL (2) 2"Ø FOR SIGNAL SYSTEM AND (1) 1 1/2"Ø FOR FA PRE PLANS.
- SAW CUT AND PATCH EXISTING FLOOR TO INSTALL (2) 2"Ø FOR POWER FEEDERS PRE PLANS.
- SAW CUT AND PATCH EXISTING FLOOR TO INSTALL (4) 2"Ø FOR POWER FEEDERS PRE PLANS.
- PROVIDE WP FLEX CONDUIT BETWEEN BUILDING AS REQUIRED.

Ownership of Documents  
 This document, the ideas and designs incorporated herein, as an instrument of Professional Service is the property of Integrated Designs by SOMAM Inc. and is not to be used, in whole or in part for any other project without written authorization.  
 © COPYRIGHT 2013

**integrated designs by SOMAM, Inc.**  
 ARCHITECTURE - INTERIOR DESIGN - CONSTRUCTION MANAGEMENT  
 9011 N. Fremont, Suite 130, Fresno, California 93710  
 Phone (559) 439-6887 Fax (559) 439-6887 E-Mail: design@somam.com  
 www.integrateddesigns.com

Rev. No.	Date	Description

POWER AND SIGNAL PLAN

Project Name & Address:  
**PIONEER ELEMENTARY**  
**4 RELOCATABLE CLASSROOMS**  
 BAKERSFIELD CITY SCHOOL DISTRICT  
 4404 PIONEER DR., BAKERSFIELD, CA

Issue Date: 00/00/13  
 Date: 06/02/13  
 Designer: J CHONG  
 DRC: J CHONG  
 P/C: C/M

Agency Approval Stamp:

FILE # 15-6  
 IDENTIFICATION STAMP  
 DIV. OF THE STATE ARCHITECT  
 OFFICE OF REGULATION SERVICES  
 03-115335  
 AC: JLS  
 DATE: JUN 10 2014  
 TRACKING #: 63321-131

Stamp(s):

Job No.: **5082**

Sheet No.: **E-2**

Release:

CONSULTING ENGINEERS  
**John S. Chong ENGINEERING**  
 JOHN S. CHONG  
 E 14419  
 Exp. 6/30/2014  
 ELECTRICAL  
 STATE OF CALIFORNIA

2027 E. DELCATOR AVE. FRESNO CA 93710  
 (559) 515-9286 • FAX 559-3401  
 jchong1neer@aol.com