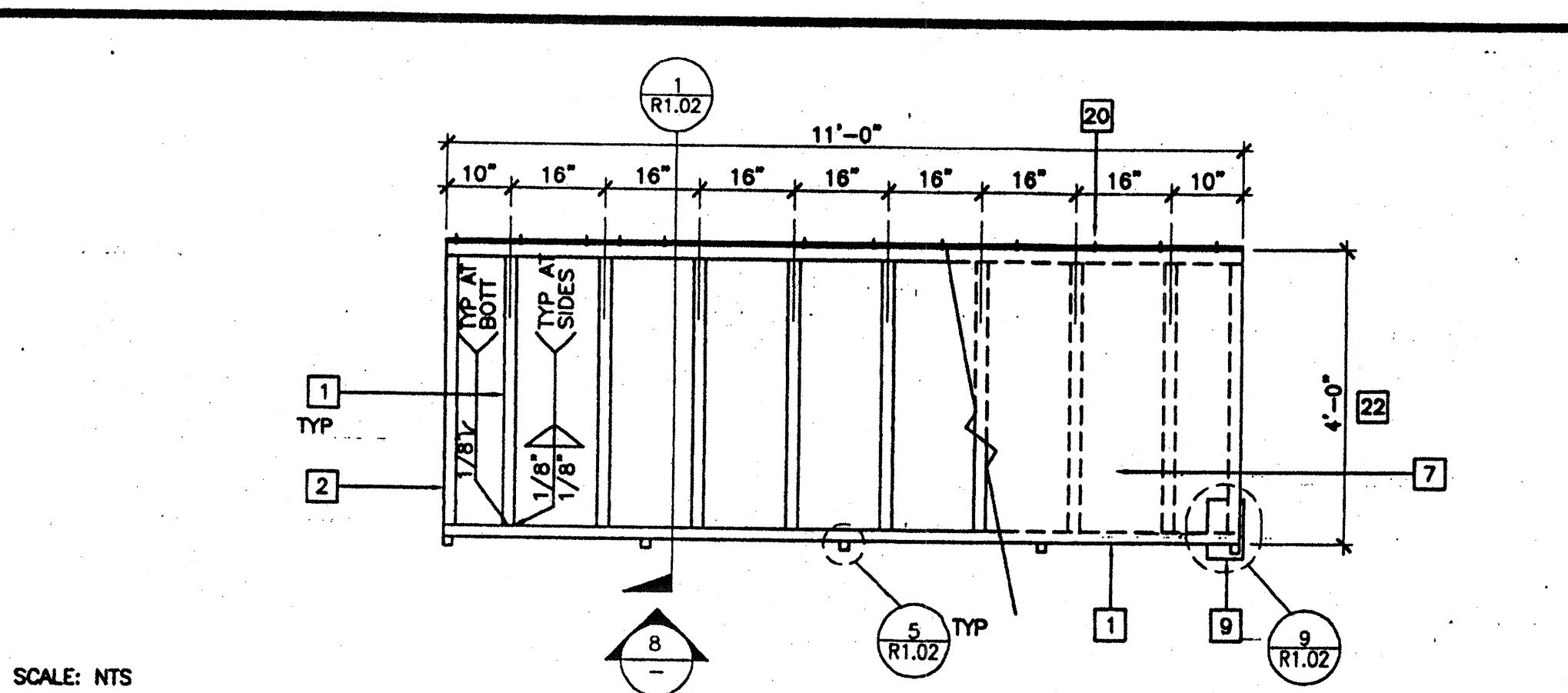


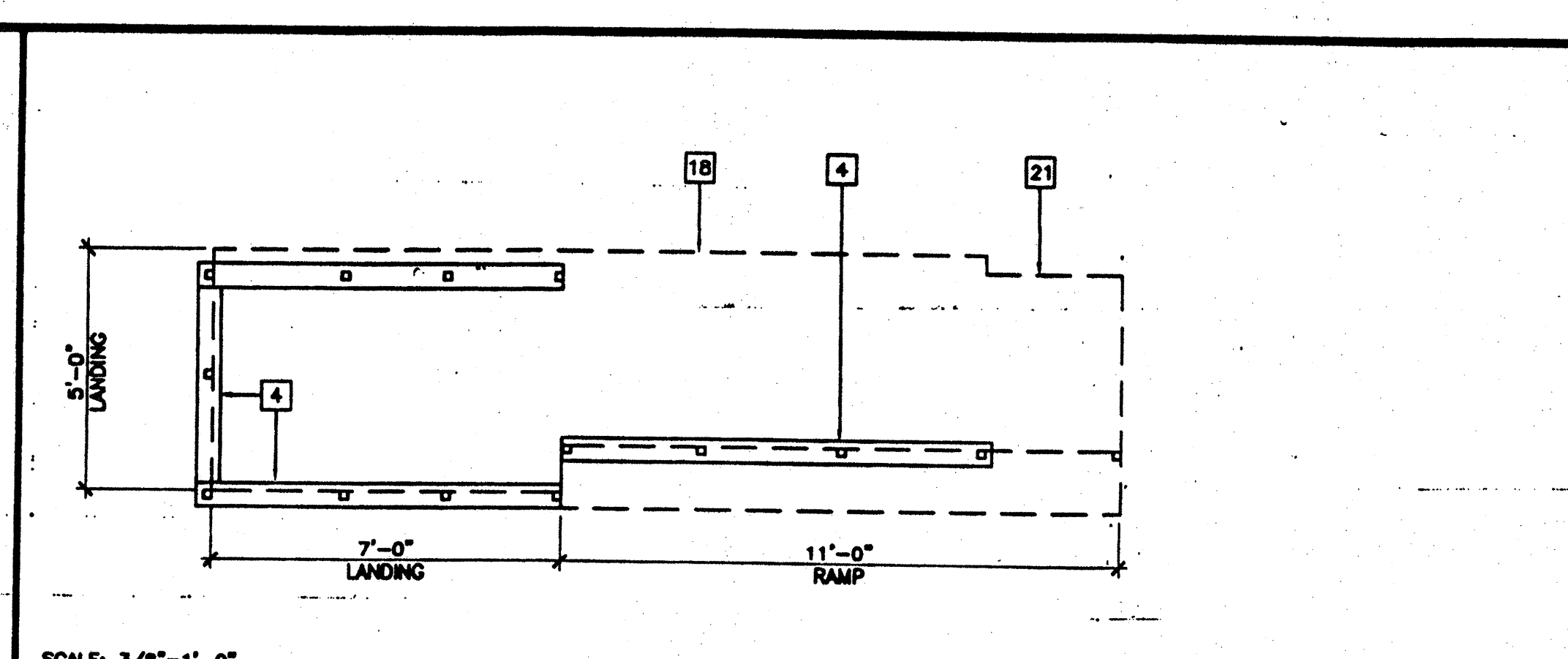
LANDING FRAME

12



RAMP FRAME

7

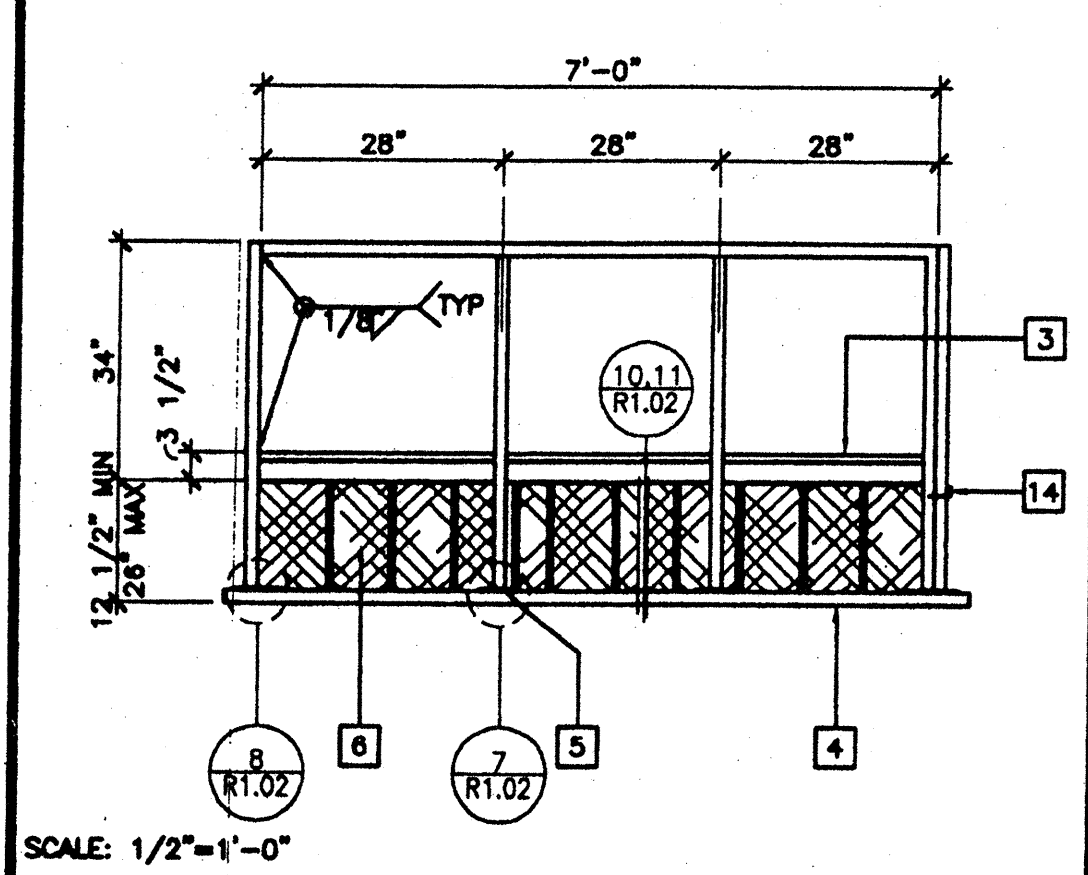


SILL PLAN FOR RAMP AND LANDING

1

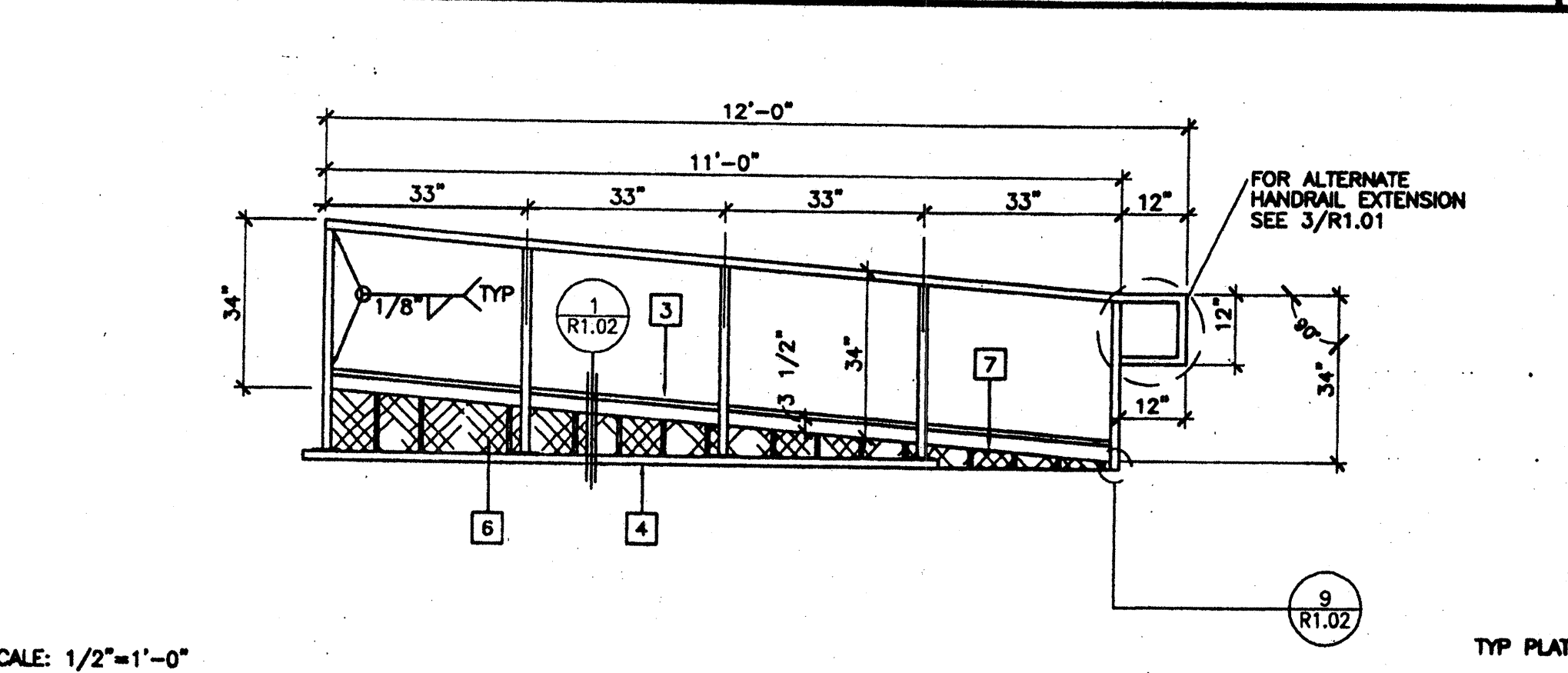
KEY NOTES

- 1 TS 2"x2"x14 GA
- 2 TS 1 1/2"x1 1/2"x14 GA (Fy = 39KSI), EASED OR ROUNDED CORNERS
- 3 TS 1"x1"x16 GA WHEELCHAIR GUIDE
- 4 2"x6" PRESSURE TREATED SILL PLATE
- 5 2"x4"x12 GA BASE PLATE WITH (2) 1/4"x1" LAGS
- 6 SKIRTING: PLYWOOD TO MATCH BUILDING SIDING, BLOCK ALL EDGES, ATTACH WITH 8d AT 6" OC EDGES AND 12" OC FIELD, AT EDGE CONNECTION TO TUBE STEEL USE #14x2" TEK SCREWS AT 6" OC
- 7 12 GA METAL DECK: NON-SUP SURFACE, DESIGN COEFFICIENT OF FRICTION GREATER THAN 0.7 C.O.F. MAINTAINABLE FOR 1 YEAR
- 8 EXISTING BUILDING
- 9 6"x10"x12 GA BASE PLATE AT RAMP TOE
- 10 LOWER LANDING BY DISTRICT
- 11 RAMP BY MODOTECH (RAMP)
- 12 FLUSH TRANSITION
- 13 6"x12"x10 GA PLATE WITH (2) 1/4"x3" LAGS TO STRUCTURAL FRAME OF BUILDING
- 14 3"x1"x3'-0"x10 GA BENT PLATE
- 15 2"x4"x 1/8" PLATE
- 16 TS 1 1/2"x1 1/2"x14 GA HANDRAIL - CONTINUOUS AND UNINTERRUPTED, ROUNDED OR BEVELED AT CORNERS
- 17 TS 1"x1"x16 GA RAIL SUPPORT
- 18 LINE OF RAMP/LANDING ABOVE
- 19 RAMP EXTENSION FRAME
- 20 6"x10 GA CONTINUOUS PLATE WITH 1/4"x2" TEK SCREWS AT 9" OC INTO WOOD OR FOUNDATION BLOCKS OR #14x2" TEK SCREWS INTO STEEL AT 9" OC
- 21 NOTCH BOTTOM PLATE (MUD SILL) AS REQUIRED TO CLEAR RAMP TOE, MAX NOTCH 1 1/2"x4'-0" LONG.
- 22 RAMP WIDTH MINIMUM CLEAR DIMENSION IS 4'-0" IF AT LEAST TWO EXIT/DISCHARGE ARE REQUIRED OR 5'-0" IF ONLY ONE EXIT/DISCHARGE IS REQUIRED. SEE CBC1133B.5.2.2



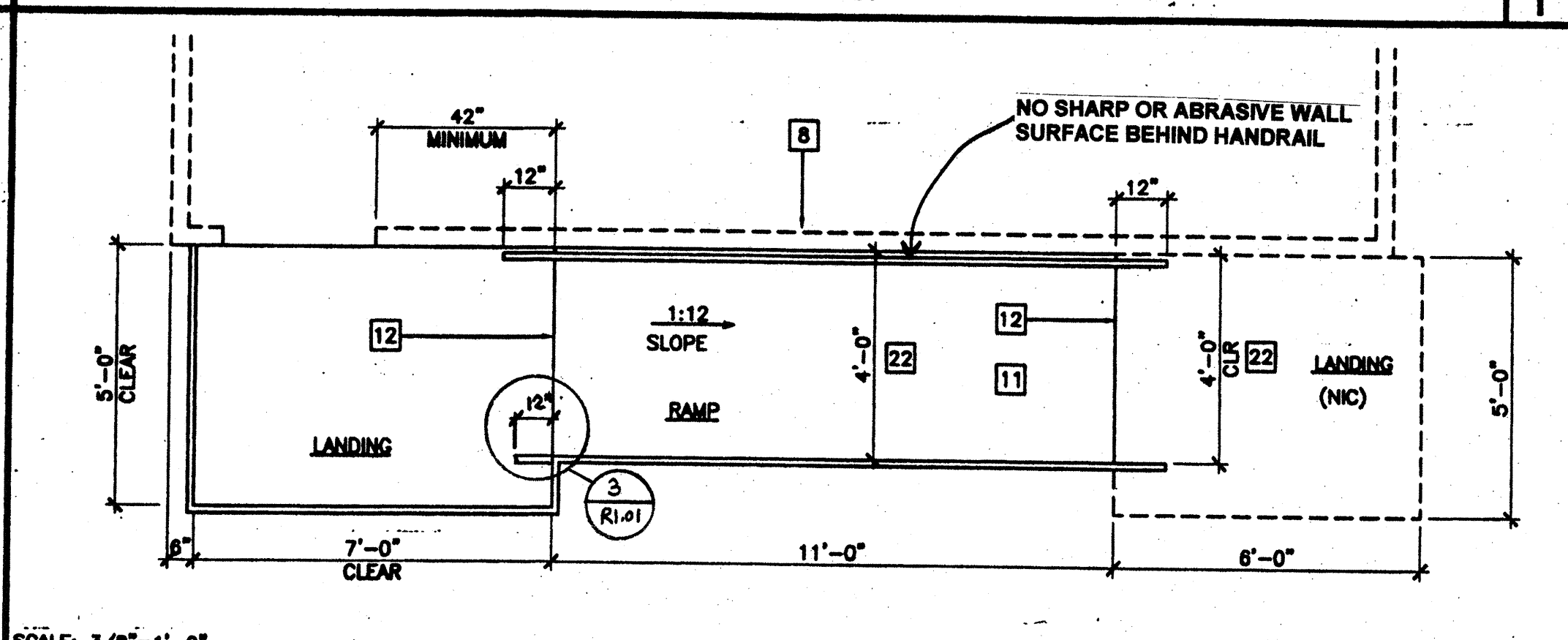
LANDING ELEVATION

13



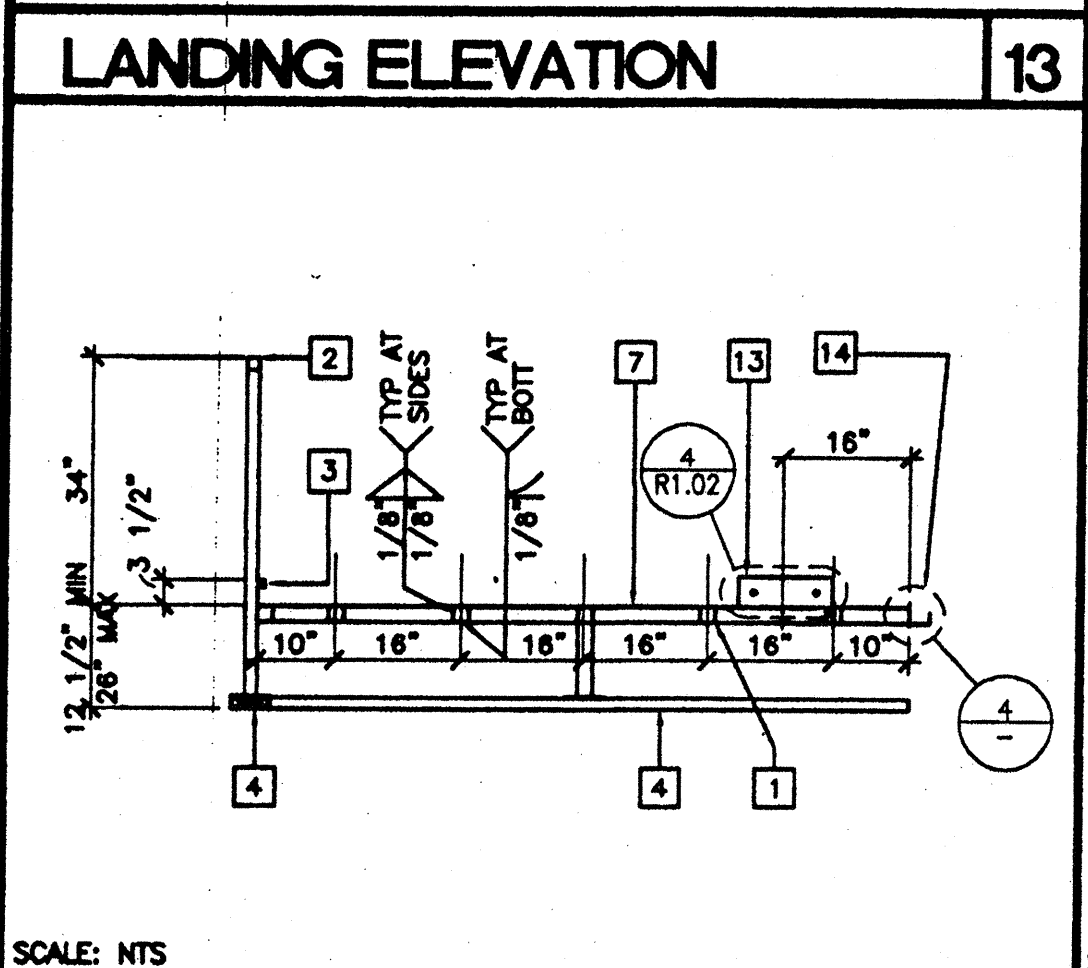
RAMP ELEVATION

8



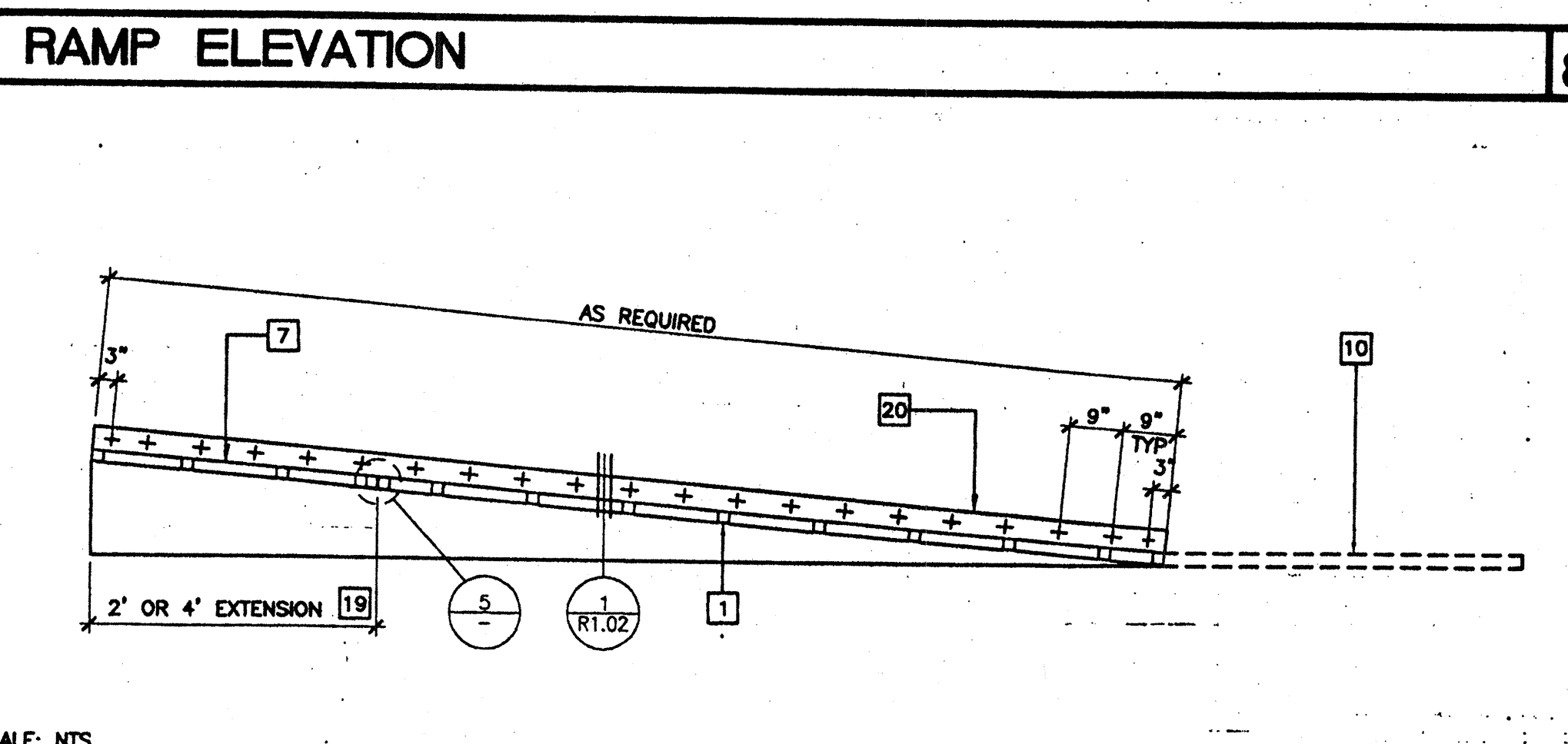
RAMP AND LANDING AT BUILDING

2



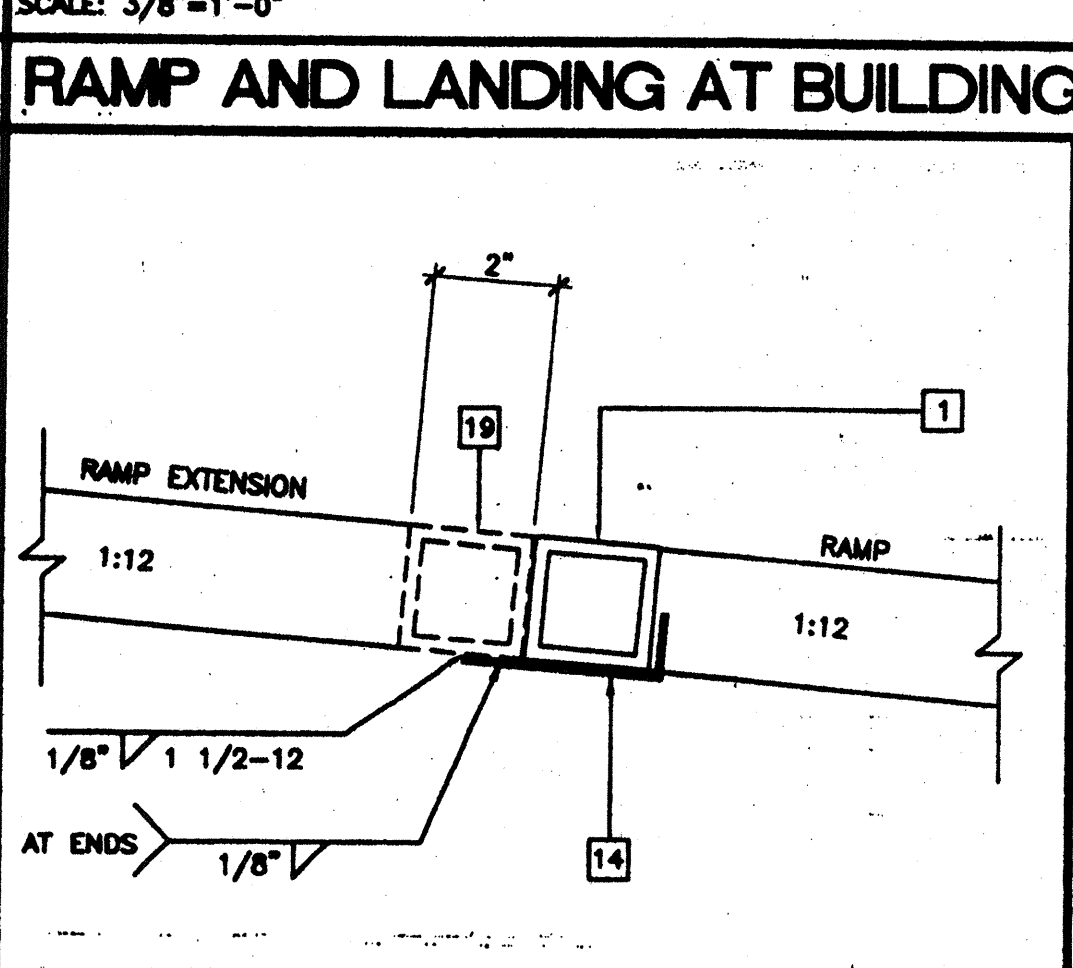
SECTION AT LANDING

14



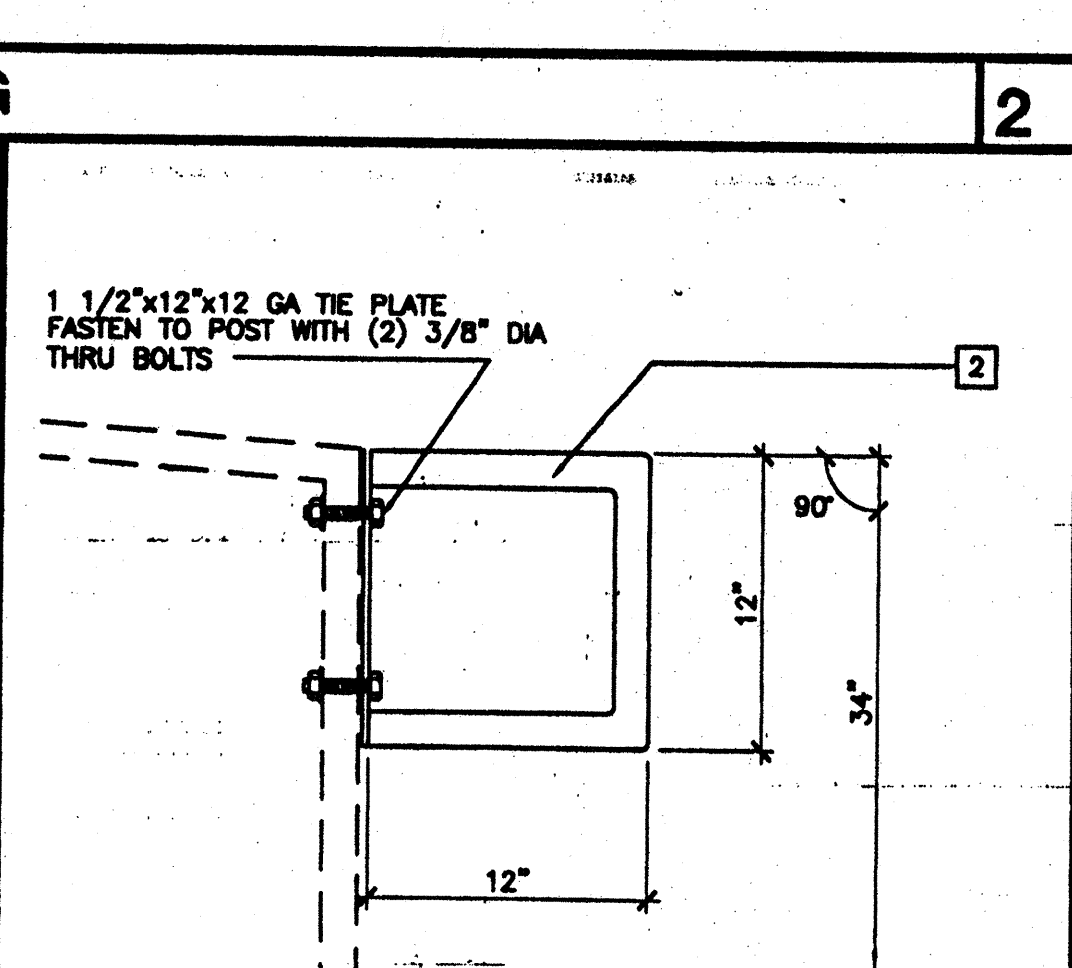
LONGITUDINAL SECTION AT RAMP

9



RAMP EXTENSION TO RAMP

5

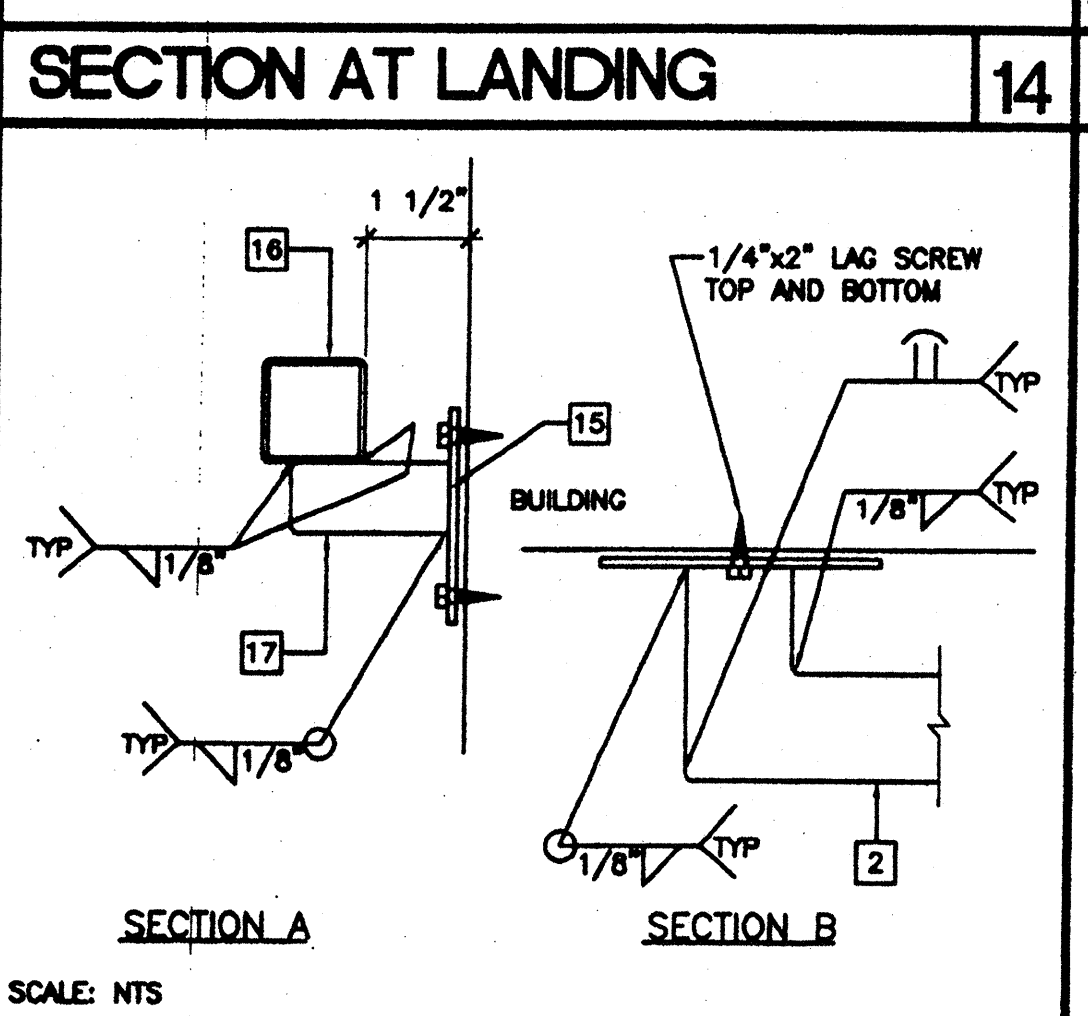


ALTERNATE GUARD RAIL EXTENSION

3

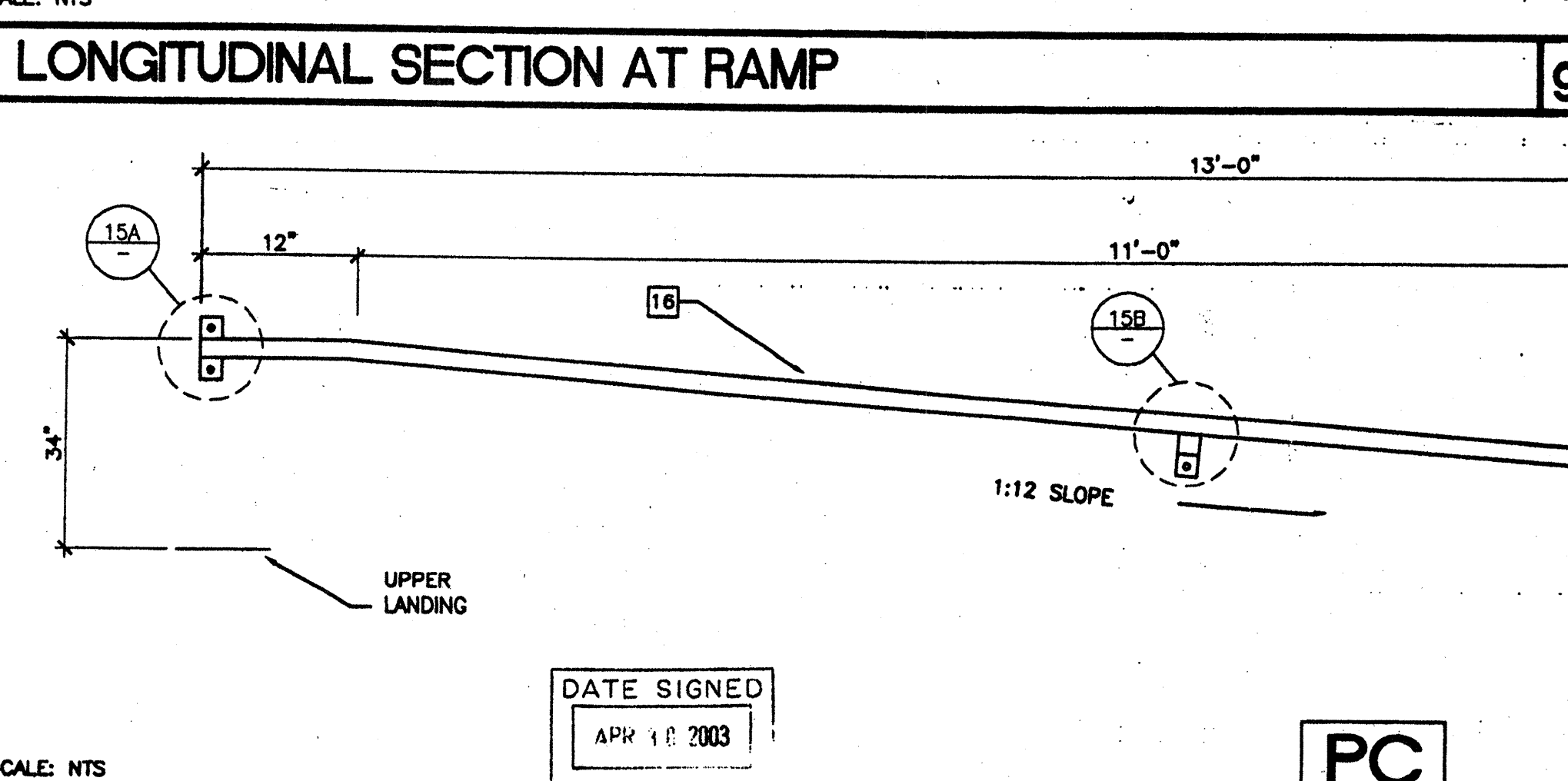
NOTES

1. RAMPS: RAMPS SHALL NOT SLOPE MORE THAN 1" IN 12"
2. HANDRAILS: HANDRAILS AT BOTH SIDES OF RAMP AT 34" HEIGHT.
3. SURFACE: LANDING AND RAMP TO HAVE NON-SLIP 0.7 MIN. COEFFICIENT OF FRICTION SURFACE AMCOR GRIP II AS MANUFACTURED BY AMERICAN CHEMICAL COMPANY (OR EQUAL)
4. GROUNDING: PROVIDE GROUNDING OF RAMP TO BUILDING FRAME WITH #8 COPPER TO BOTH GROUND LUGS.
5. ARCHITECT SITE/RAMP/LANDING PLANNING: DUE TO VARYING SITE CONDITIONS THE MAXIMUM HEIGHT OF FINISH FLOOR FROM GRADE IS 26". THEREFORE IT IS POSSIBLE THAT THE ACCESS RAMP ATTACHED TO THE BUILDING COULD BE 26'-0" AT A SLOPE OF 1:12. ARCHITECT MUST TAKE INTO ACCOUNT THAT THE RAMP SUPPLIED BY MODOTECH INC. IS 11'-0" AT A SLOPE OF 1:12. THEREFORE THE ARCHITECT WILL HAVE TO DESIGN AND PROVIDE DETAILS OF RAMP EXTENSIONS AND BOTTOM LANDING DEPENDING ON PARTICULAR SITE CONDITIONS. IN NO WAY IS MODOTECH INC RESPONSIBLE FOR ANY RAMP EXTENSION EXCEEDING THE ORIGINAL PLAN AS SHOWN ON THIS SHEET
6. ALL 1 1/4" AND 1 1/2" TUBE STEEL TO BE OF ASTM A500 GRADE A STEEL (Fy = 39 KSI)



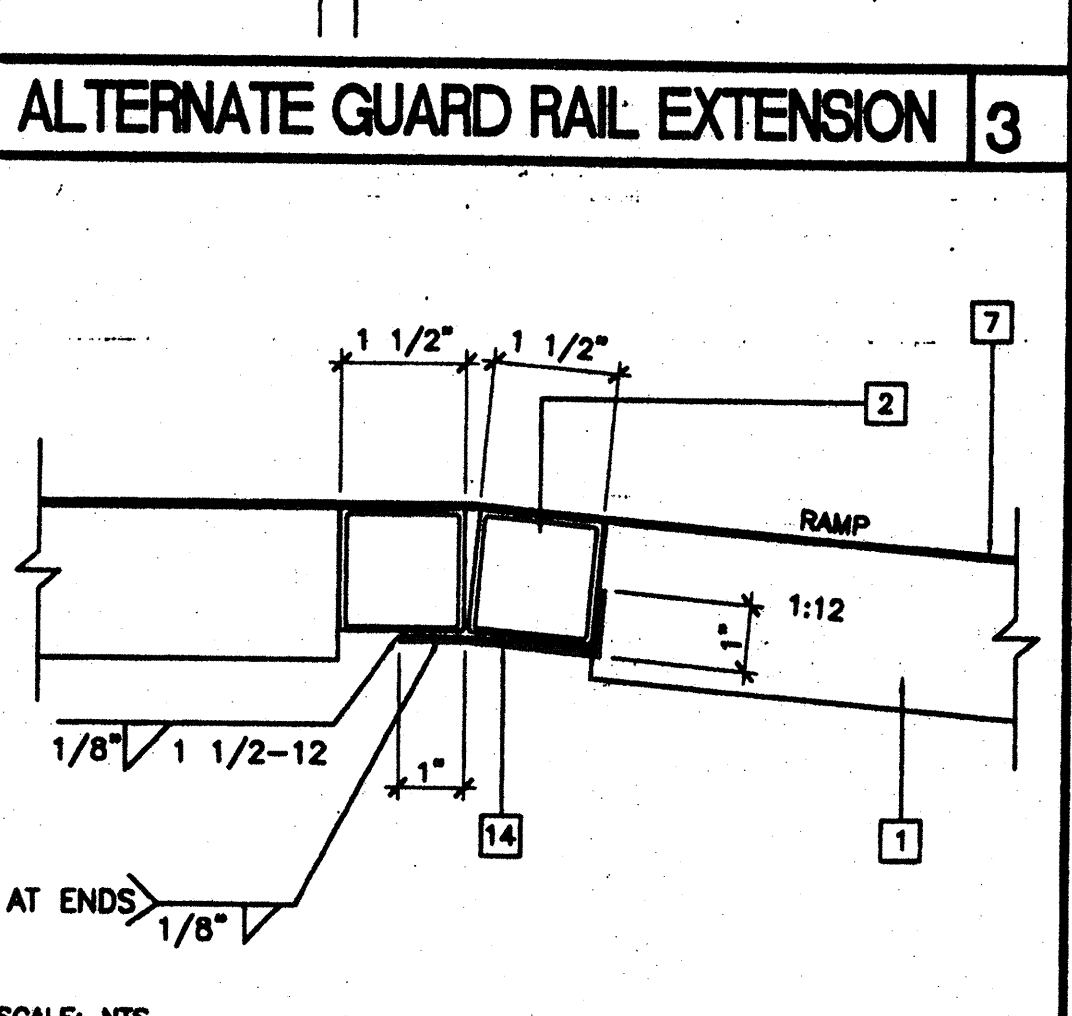
HANDRAIL CONNECTION

15



HANDRAIL ATTACHED TO BUILDING (OPTIONAL)

CBC 2001



RAMP AT LANDING

4

REVISIONS

Electrical Engineer's Seal Mechanical Engineer's Seal PC Professional of Record Seal Architect's Seal

DATE SIGNED APR 18 2003

PC

IDENTIFICATION STAMP DIV. OF THE STATE ARCHITECT OFFICE OF REGULATION SERVICES PC-04 104801

MODTECH INC.

2830 BARRETT AVENUE PERRIS, CALIF. 92571

PH (909) 943-4014 FAX (909) 940-0427

PROJECT NUMBER: _____

© MODTECH, INC. 2002

CLASS LEASING INC STOCKPILE # 69 200- 5' WIDE RAMPS FOR SITE SETUP

DRAWN BY: 05/15/03 DATE: STKP-69 CHECKED BY: DATE: MODTECH Index No. **R1.01**

FLS: NOT REQ'D ACS: A. SMITH (CLERK) SSS: J. COHEIL

IDENTIFICATION STAMP DIV. OF THE STATE ARCHITECT OFFICE OF REGULATION SERVICES APPOS 115335 AC MF FLS SS ED DATE JAN 08 2016

IDENTIFICATION STAMP DIV. OF THE STATE ARCHITECT OFFICE OF REGULATION SERVICES O4 105274 AC FLS SS ED DATE MAY 15 2002