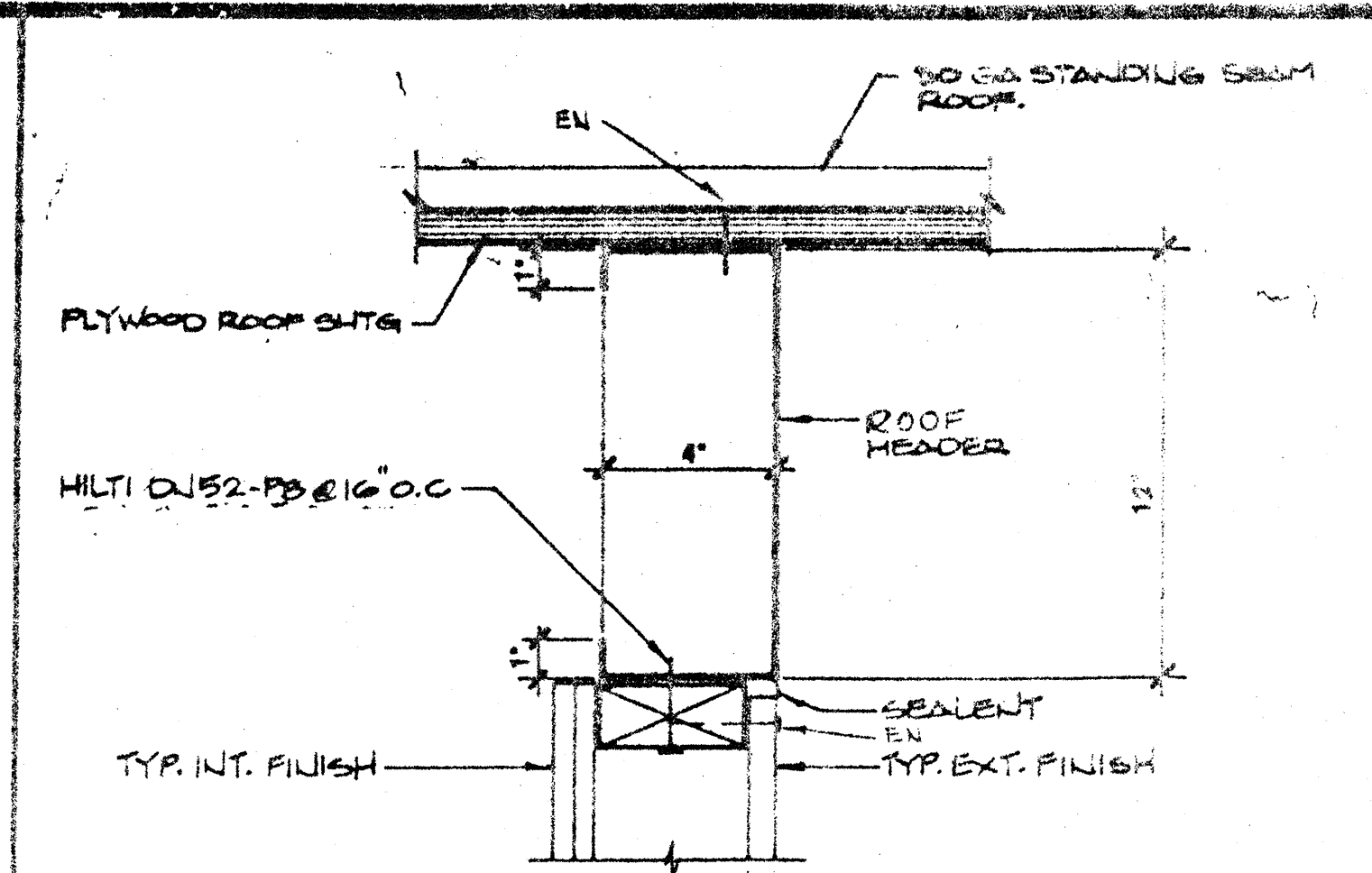
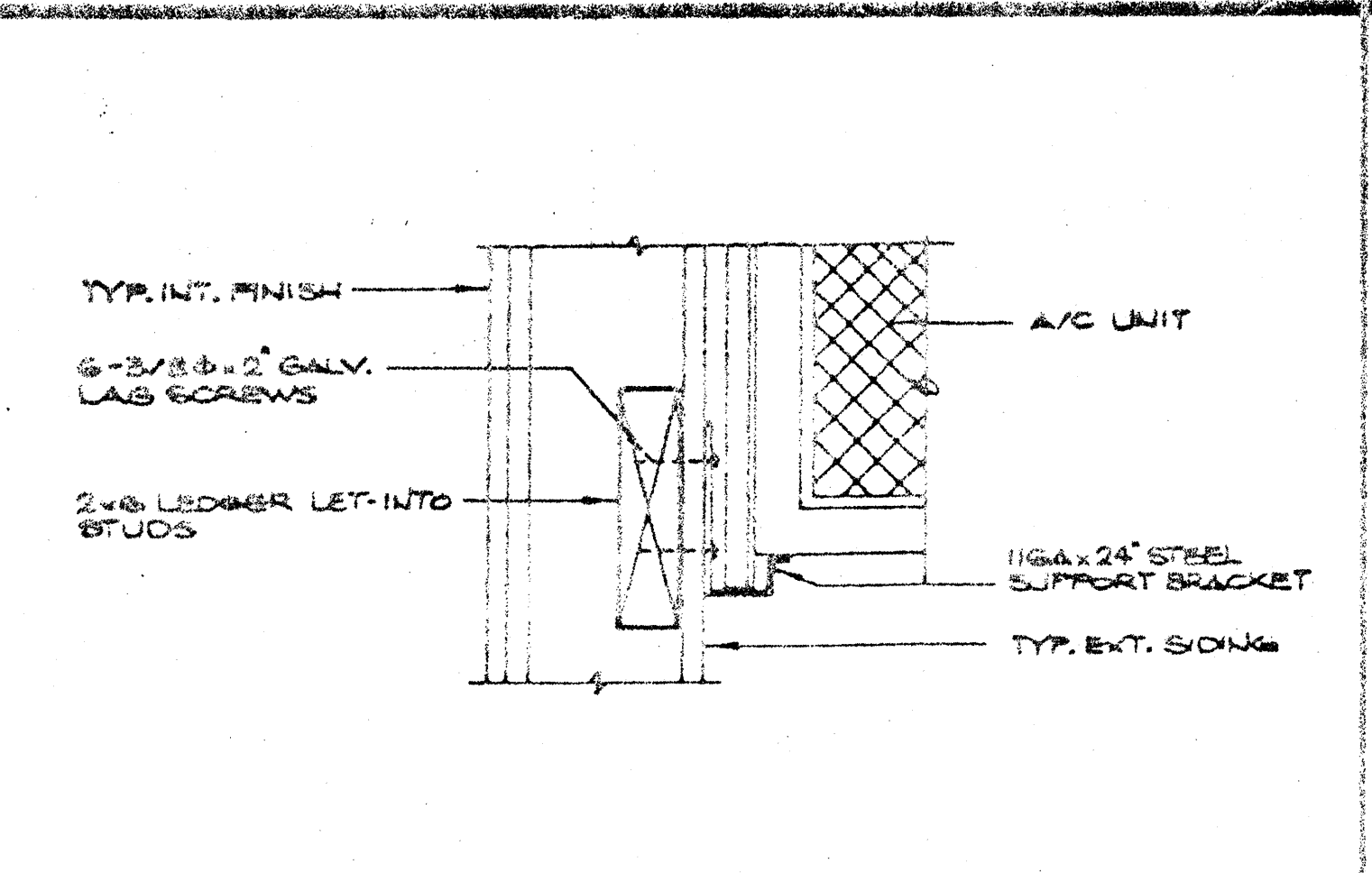


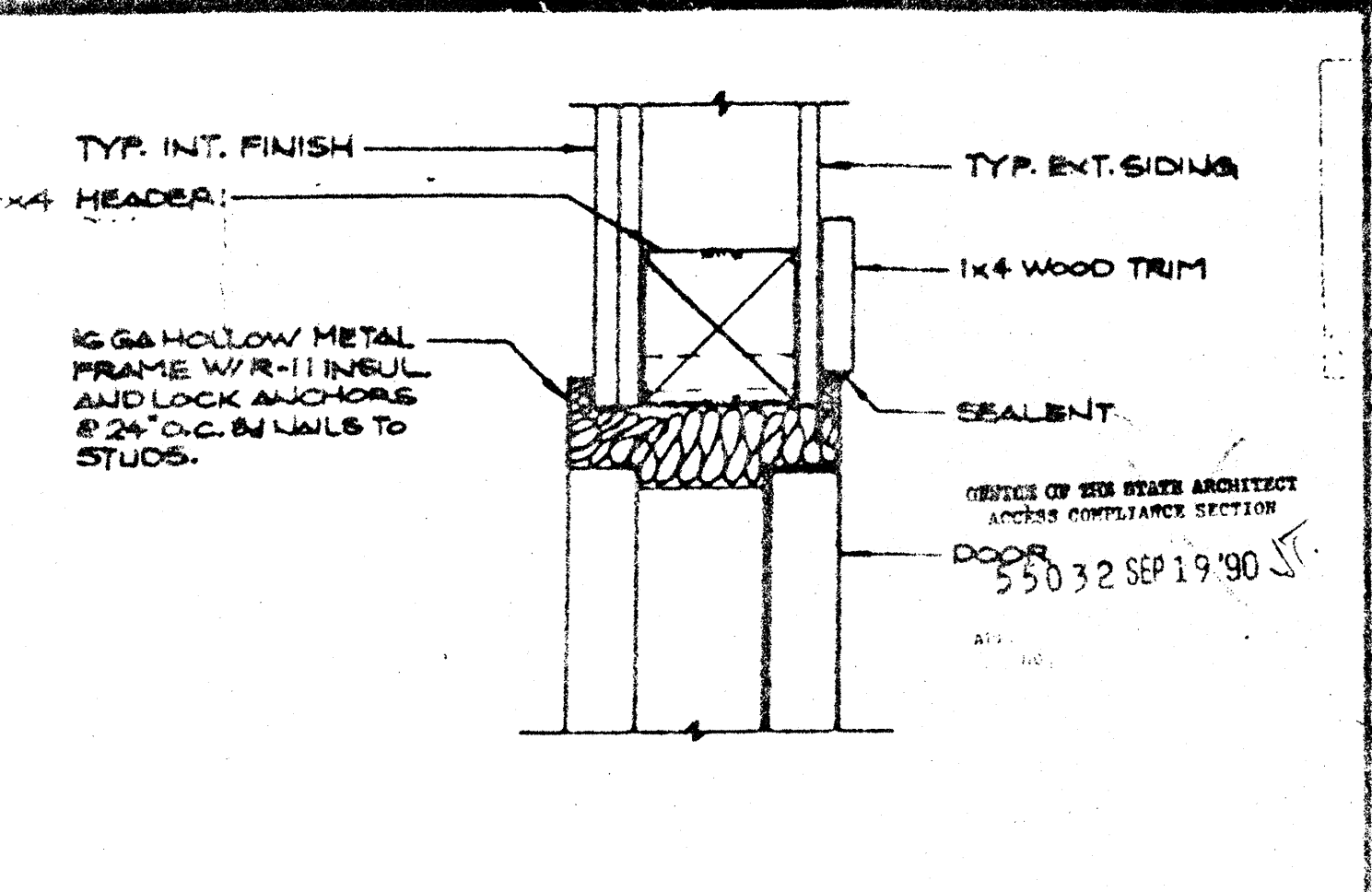
COLUMNS @ MODLINE SCALE: 3" = 1' 13



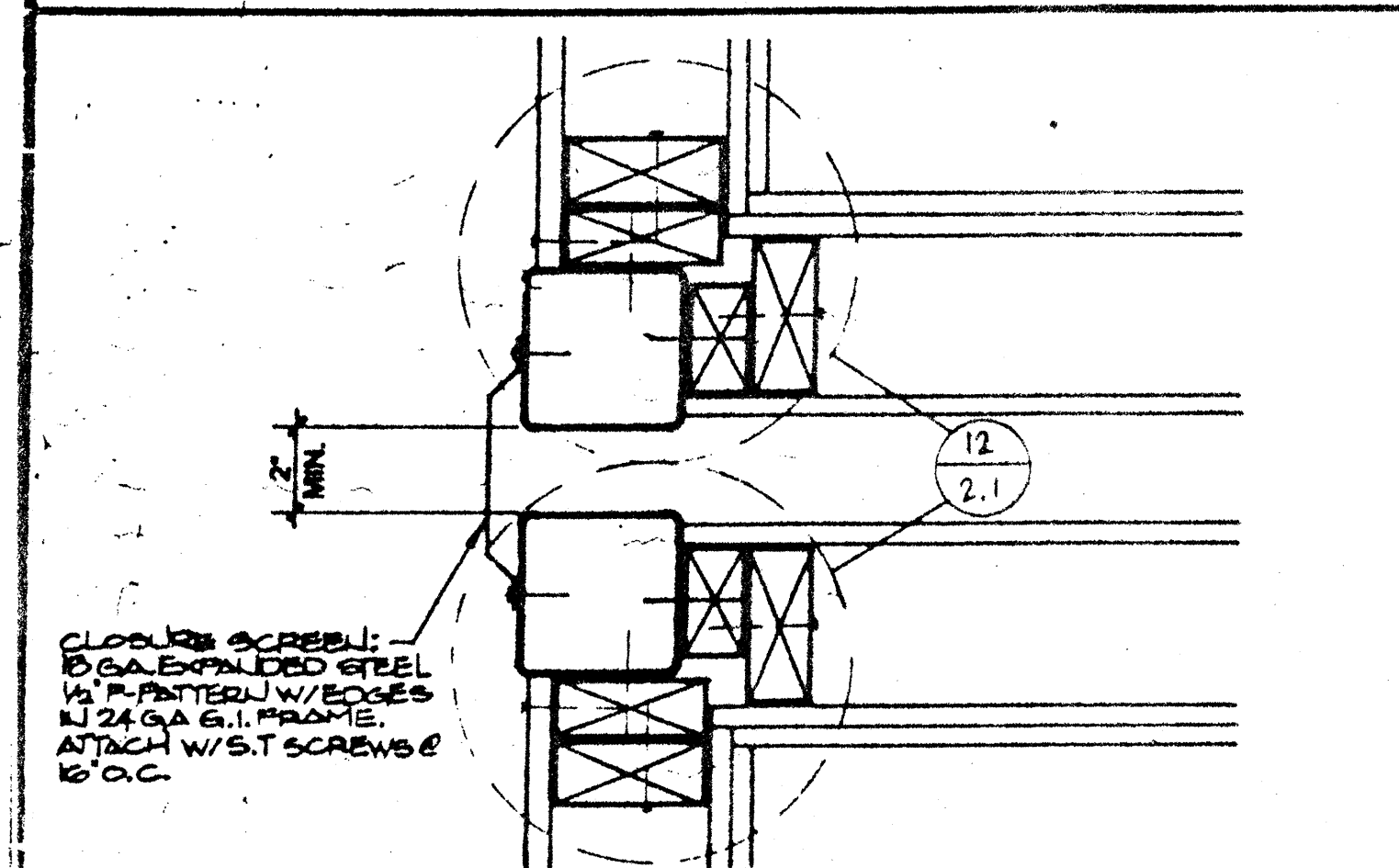
END WALL @ ROOF SCALE: 3" = 1' 9



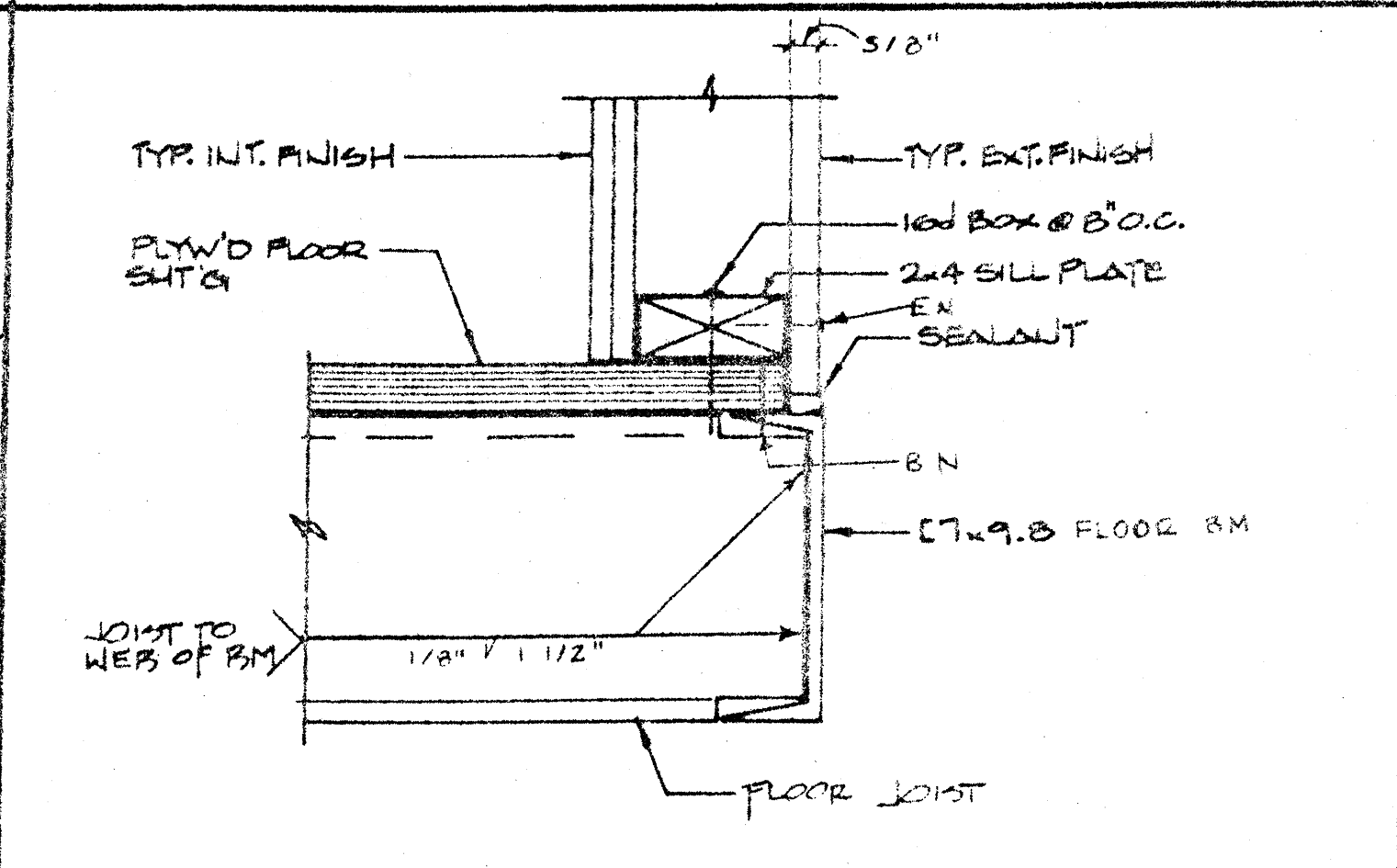
A/C UNIT - BOTTOM SCALE: 3" = 1' 5



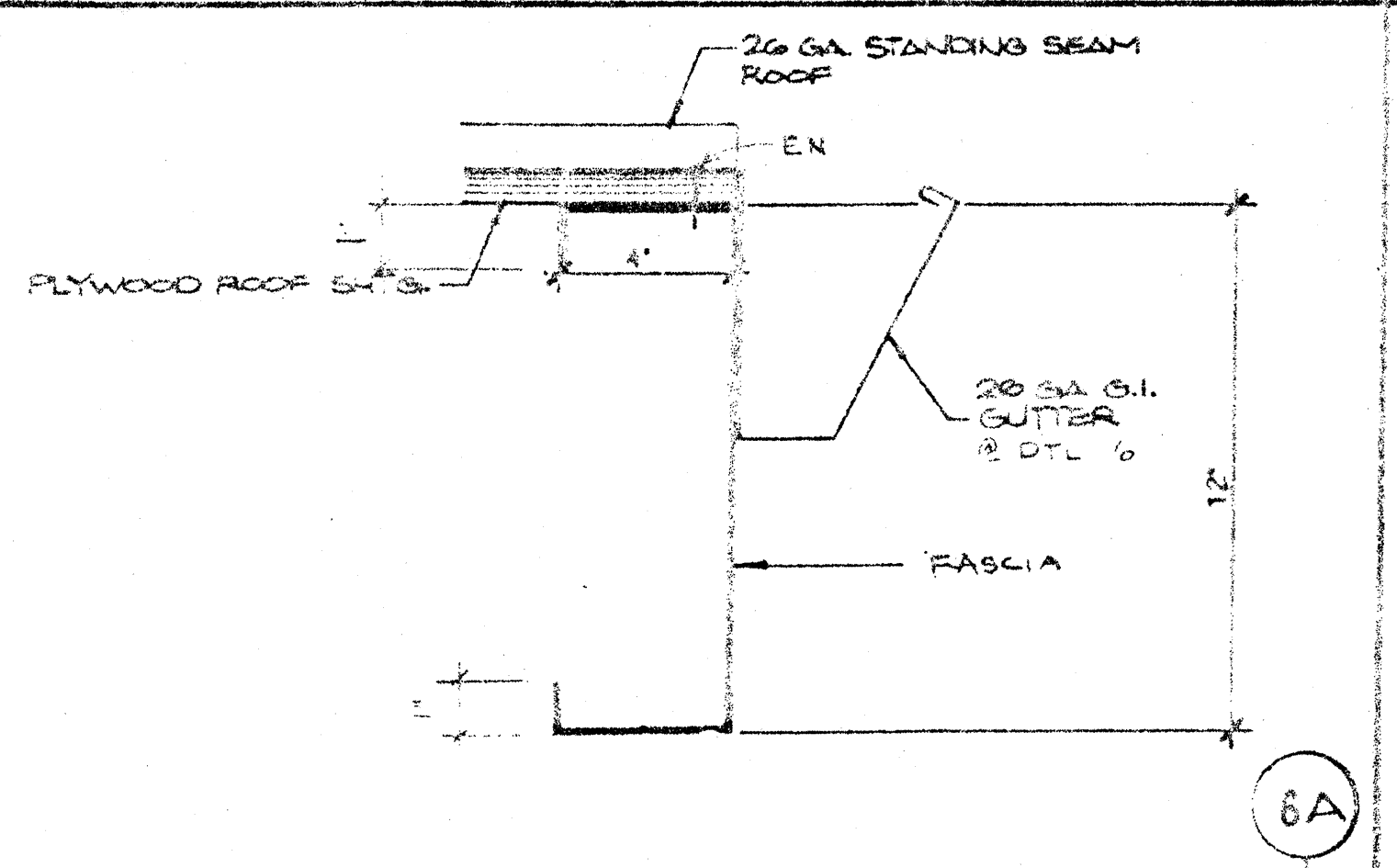
HEADER SCALE: 3" = 1' 1



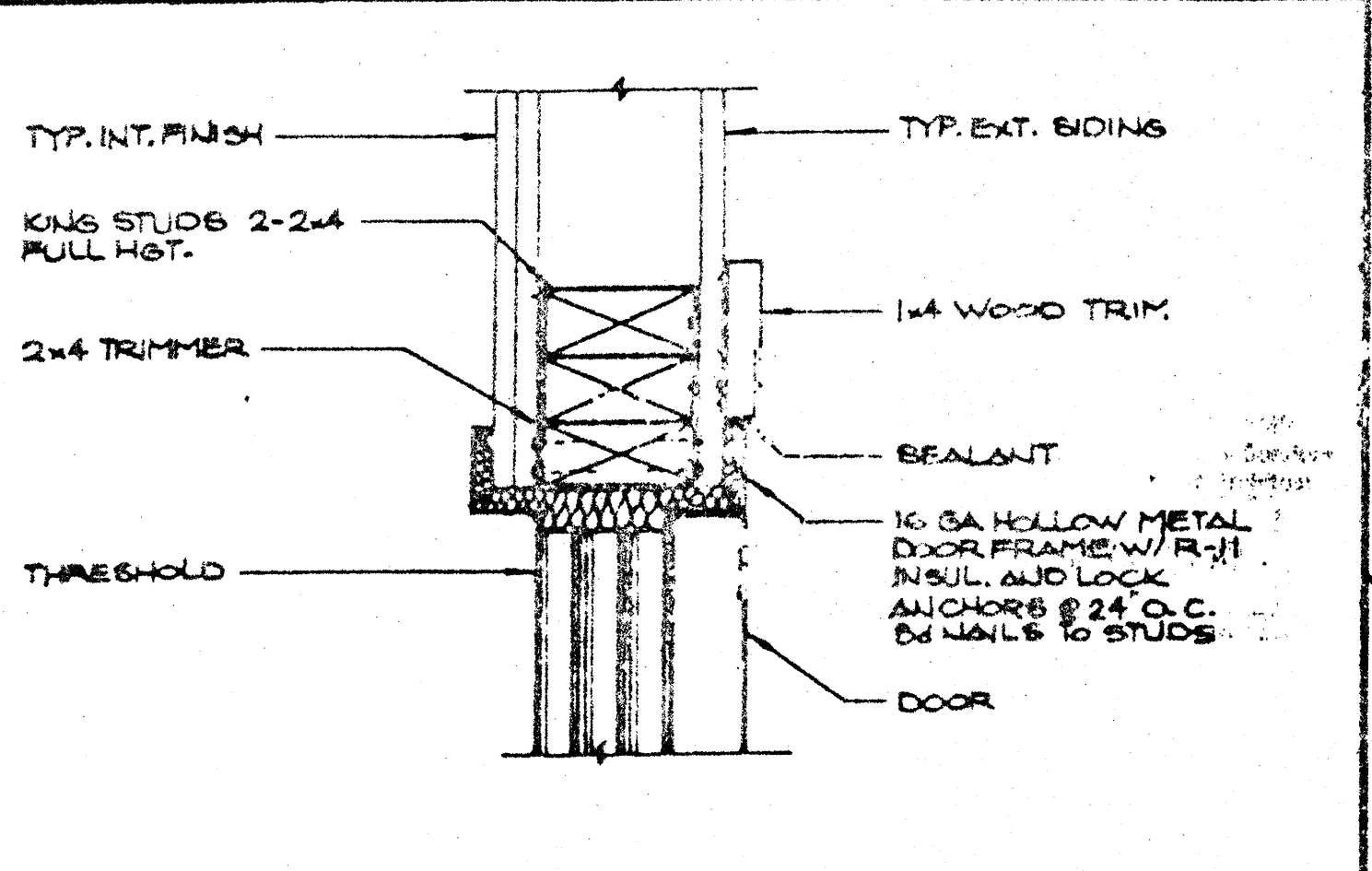
CLOSURE BETWEEN BLDGS SCALE: 3" = 1' 14



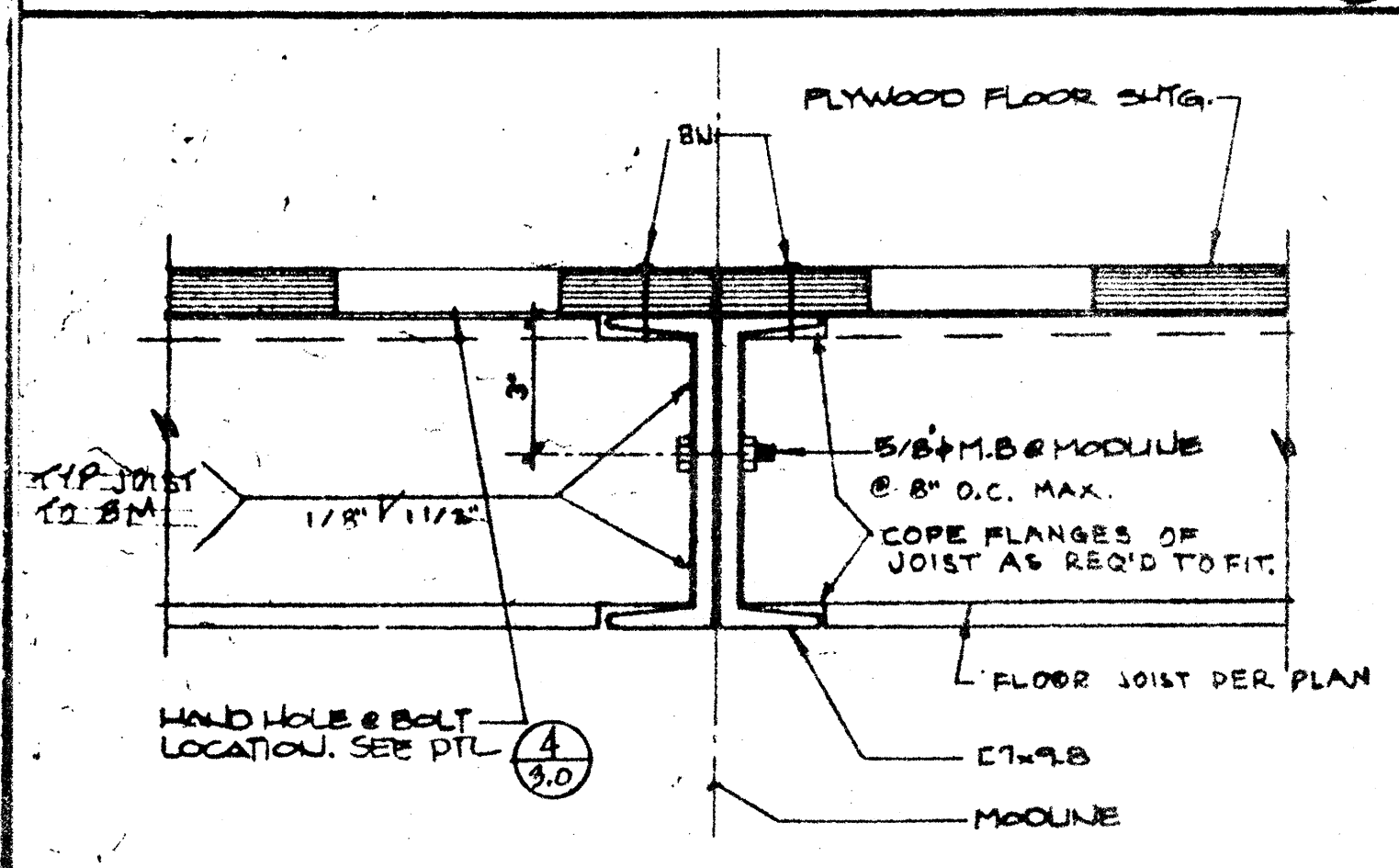
FLOOR FRAME @ WALL SCALE: 3" = 1' 10



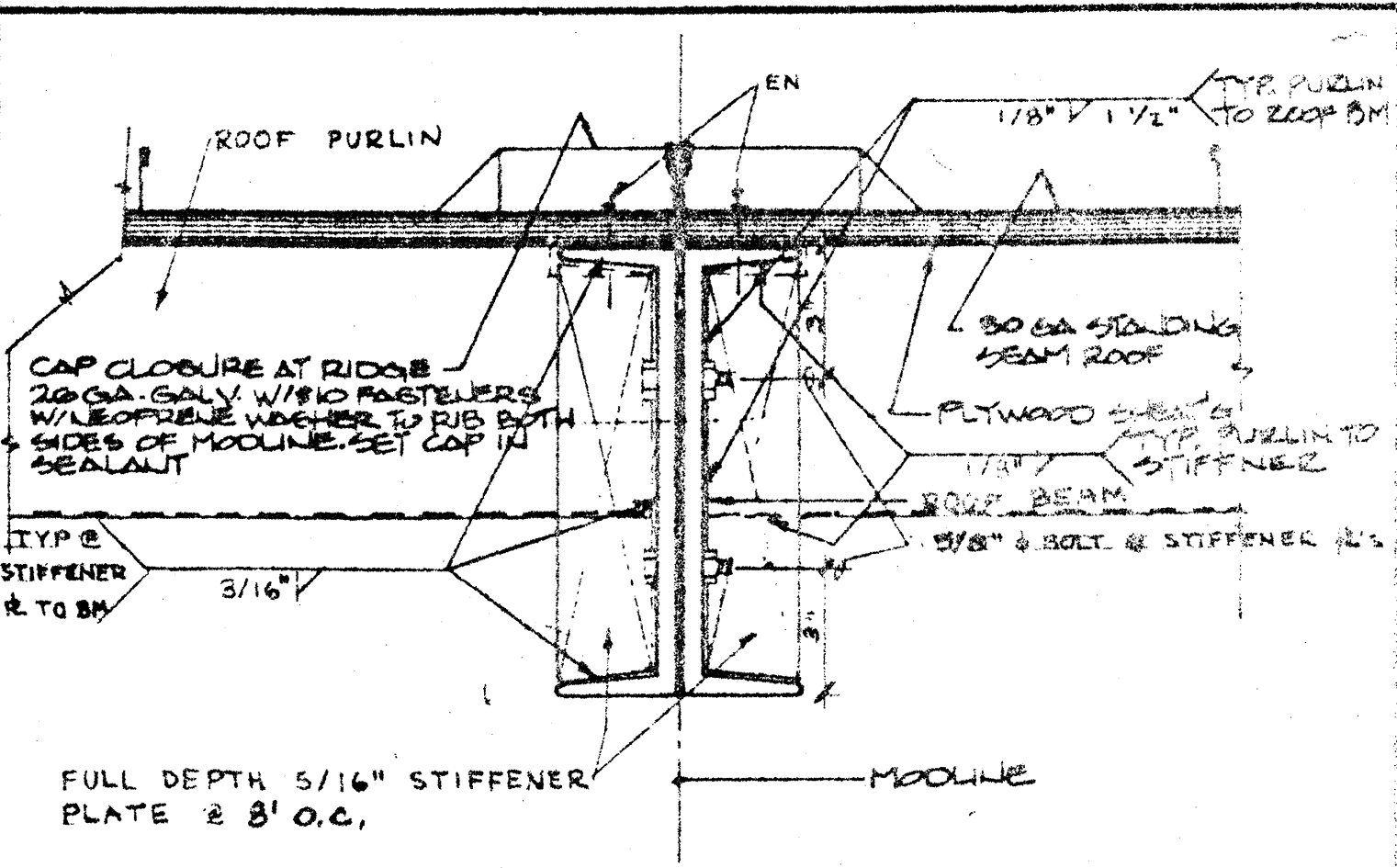
FASCIA SCALE: 3" = 1' 6A



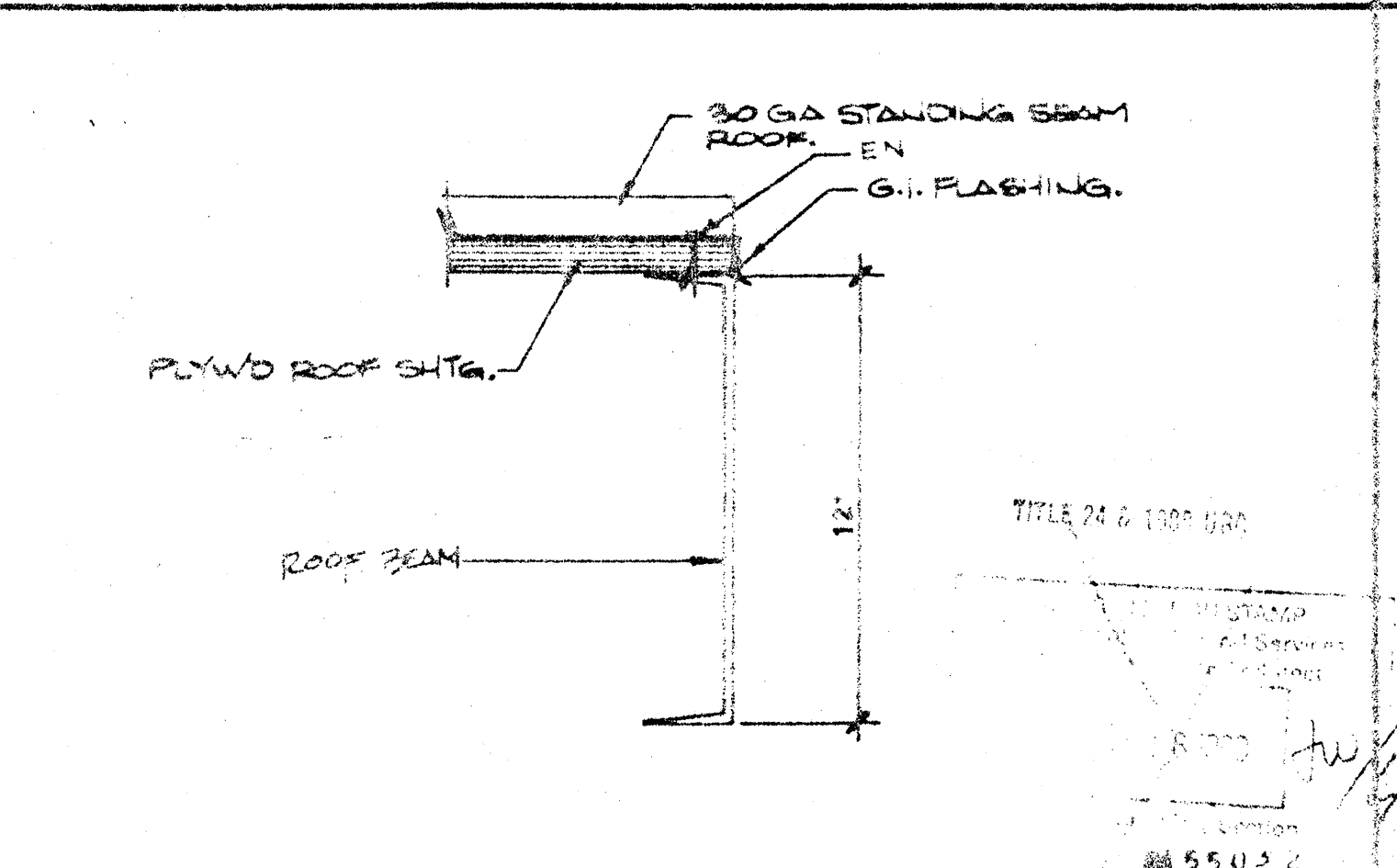
DOOR JAMB SCALE: 3" = 1' 2



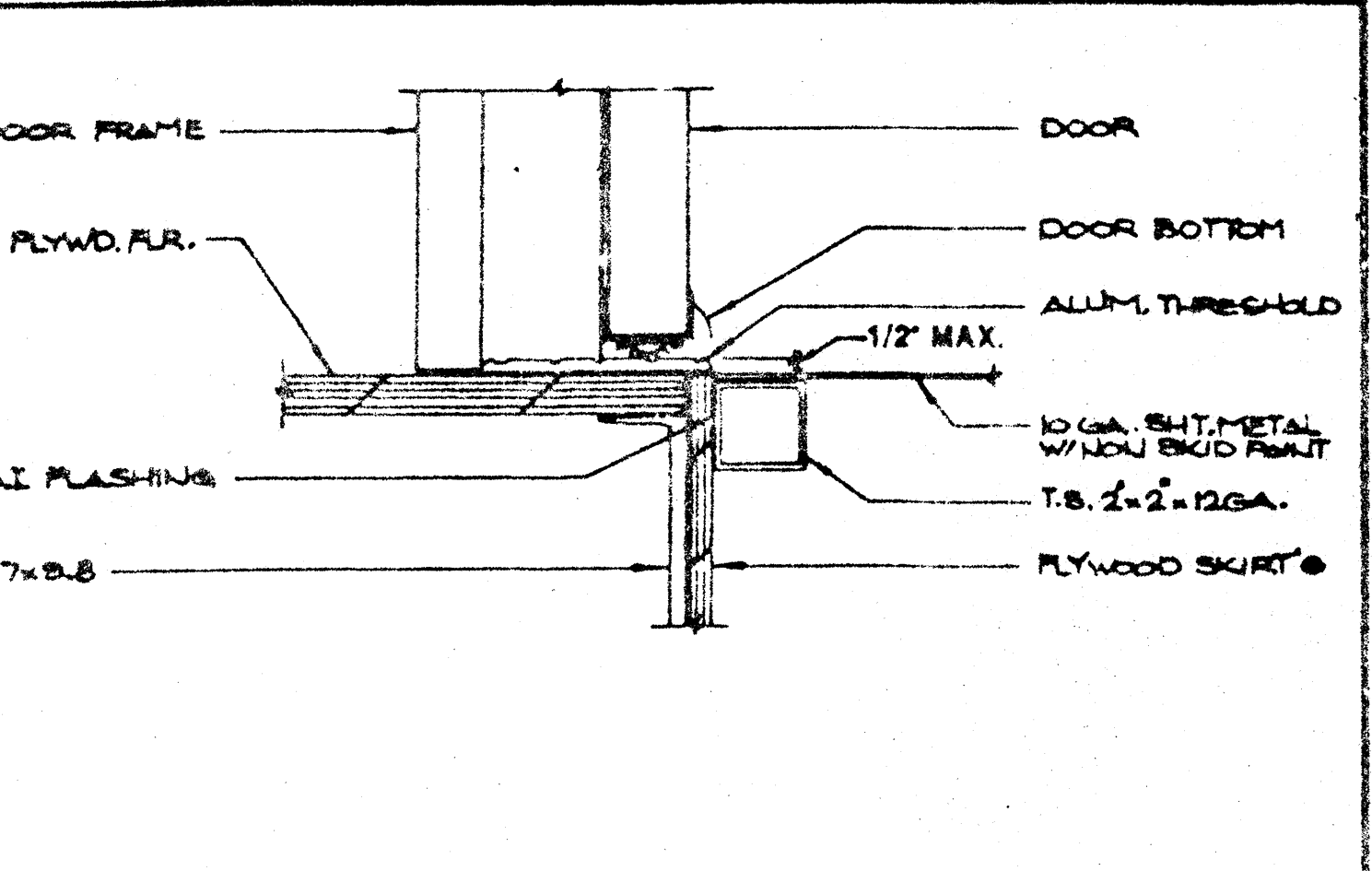
MODULE JOINT @ FLOOR SCALE: 3" = 1' 15



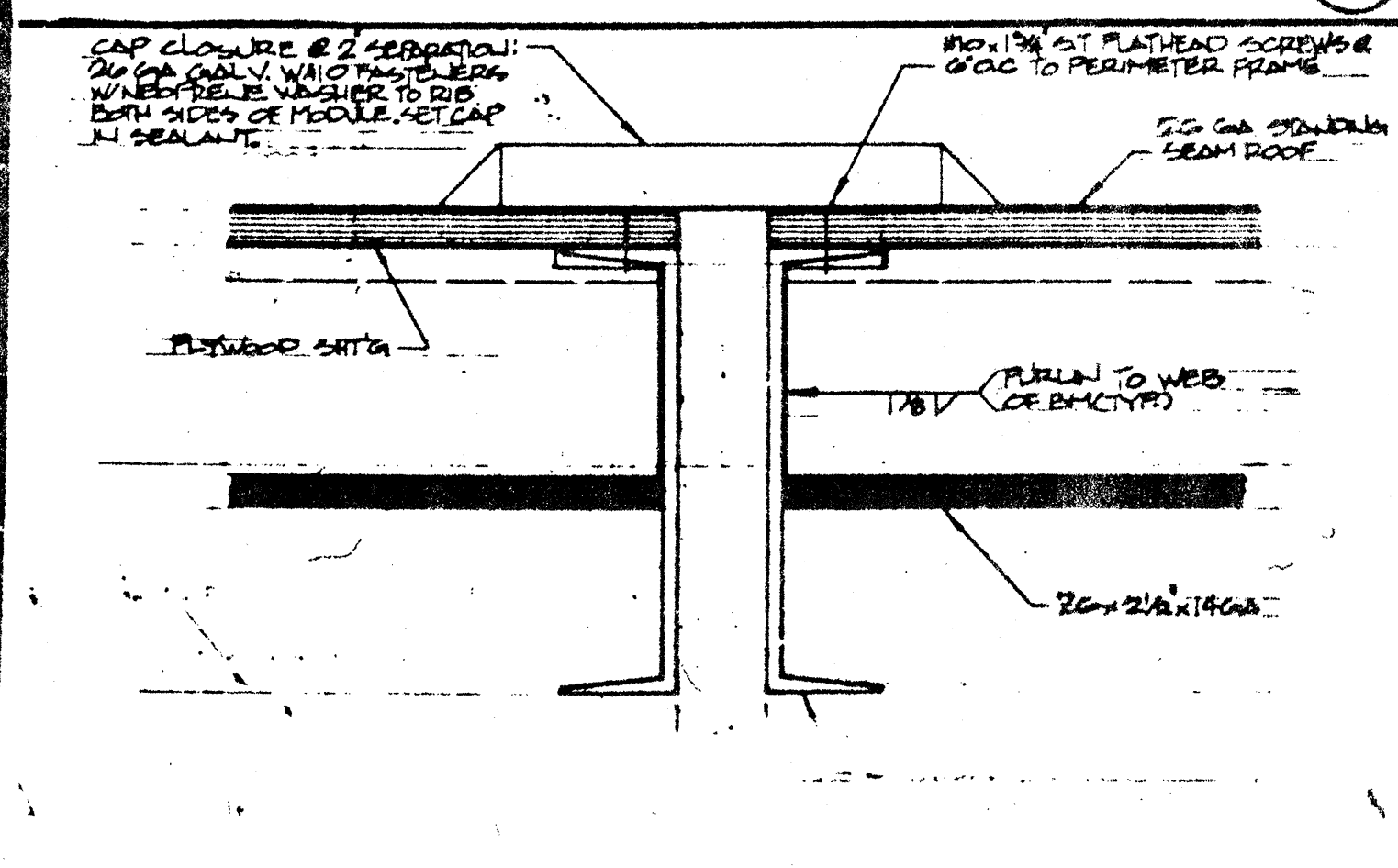
ROOFING @ MODLINE SCALE: 3" = 1' 11



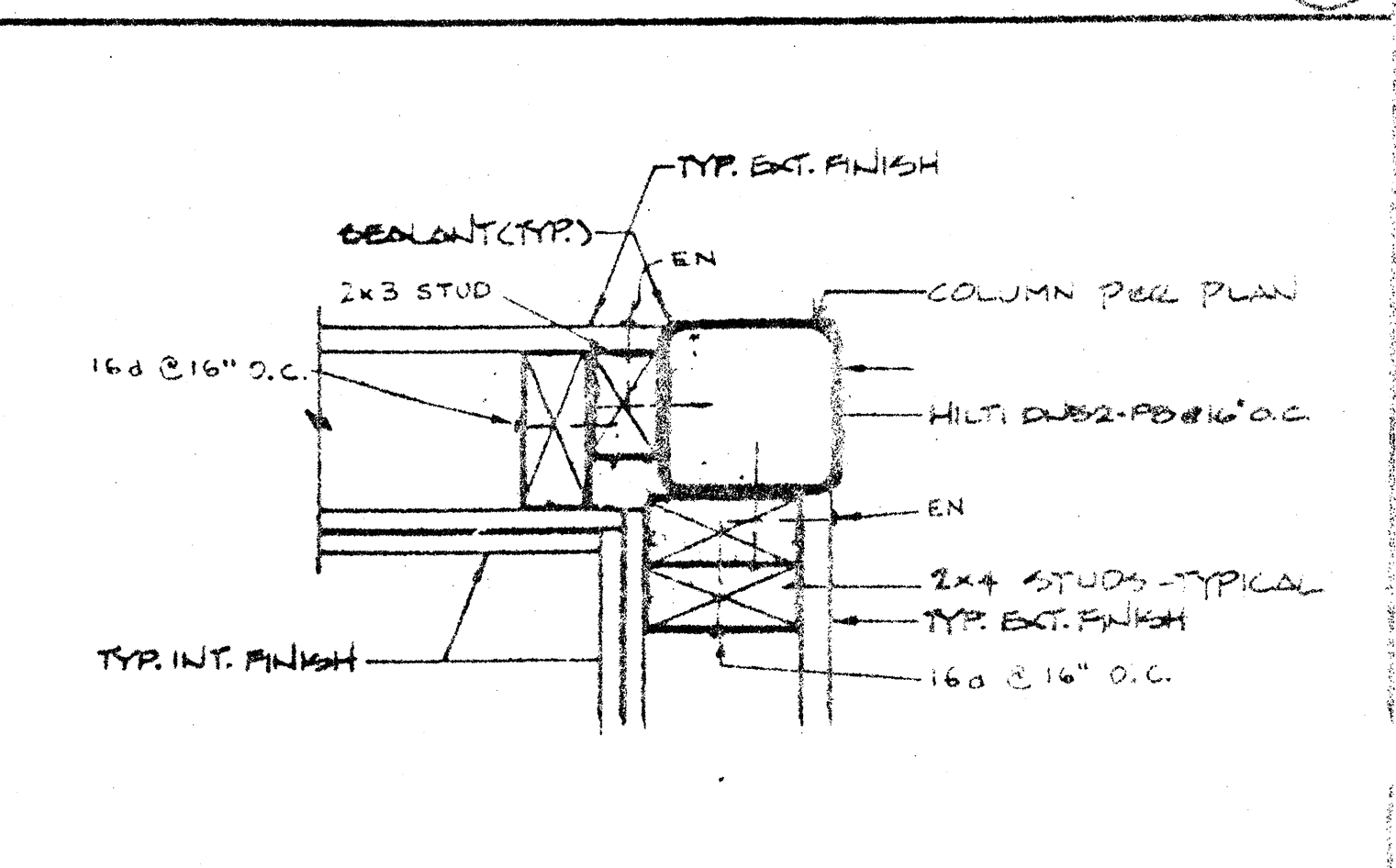
FASCIA @ SIDE WALL SCALE: 3" = 1' 7



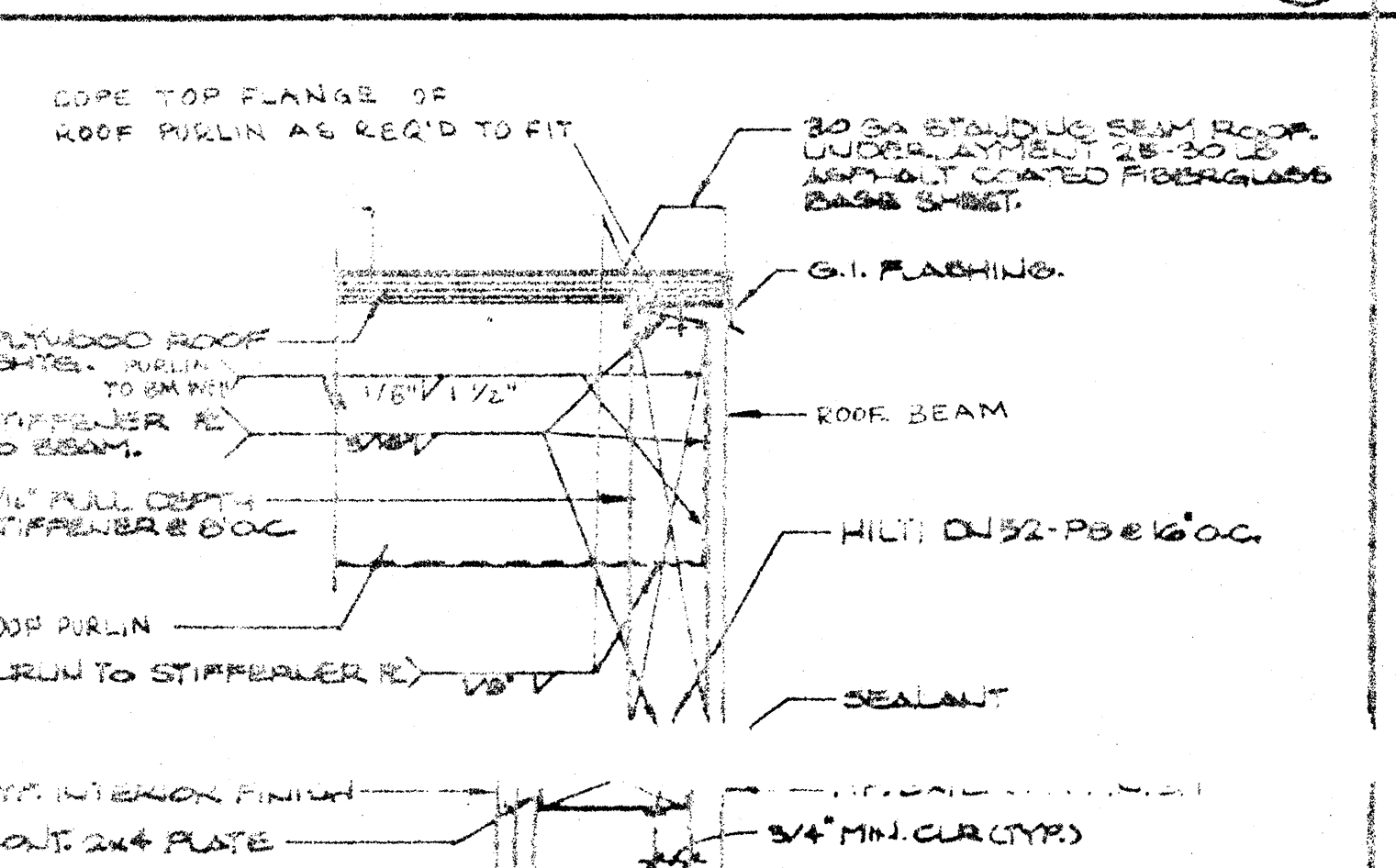
THRESHOLD SCALE: 3" = 1' 3



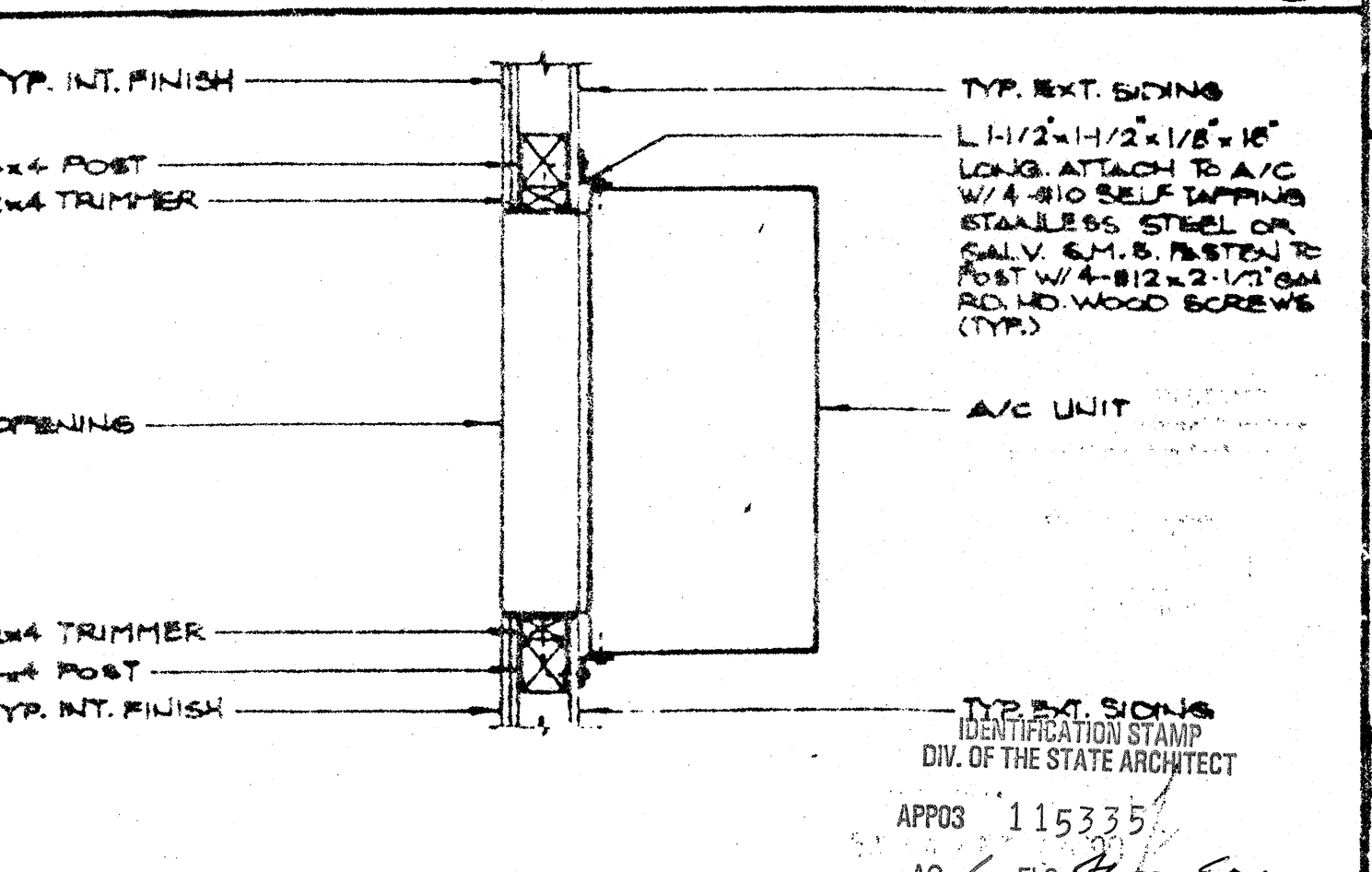
ROOF CAP @ 2\"/>



CORNER COLUMN SCALE: 3" = 1' 12

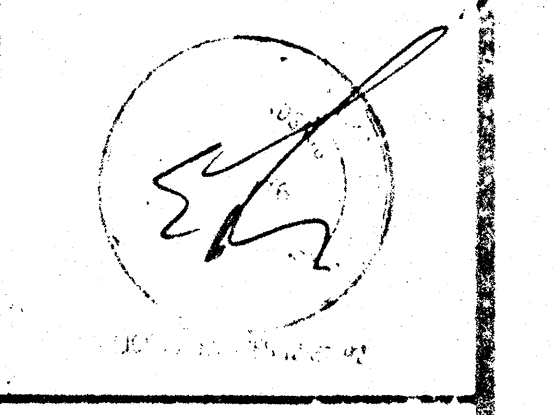


SIDE WALL @ ROOF SCALE: 3" = 1' 8

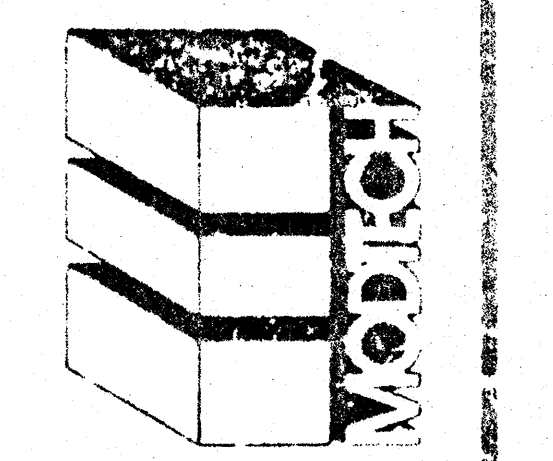


A/C UNIT SCALE: 1" = 1' 4

U.S.A. TITLE 24 & 1990 JGD
 IDENTIFICATION STAMP
 Department of General Services
 Office of the State Architect
 1989
 REVISED DEC 07 1989
 Structural Safety Section
 A.C.S. BULLA
 OFFICE OF THE STATE ARCHITECT
 ACCESS COMPLIANCE SECTION
 55032 SEP 19 1990
 FIRE MARSHAL
 APPROVED FIRE AND PANIC ONLY
 OCT 4 1989
 STATE FIRE MARSHAL
 SOUTHERN REGION
 APPROVED FIRE AND PANIC ONLY
 SEP 19 1990
 STATE FIRE MARSHAL
 SOUTHERN REGION



MODTECH, INC.
 195 EAST MORGAN STREET
 PERRIS, CA. 92370 (714) 943-4014



RELOCATED TO CLASSROOM BUILDINGS
 MODTECH STANDARD
 24' x 40'
 RIGID FRAME
 RELOCATABLE
 CLASSROOM
 STOCKPILE 103.
 SKP-23
 ORDER 5
 6-22-89
 2.1
 R02440E