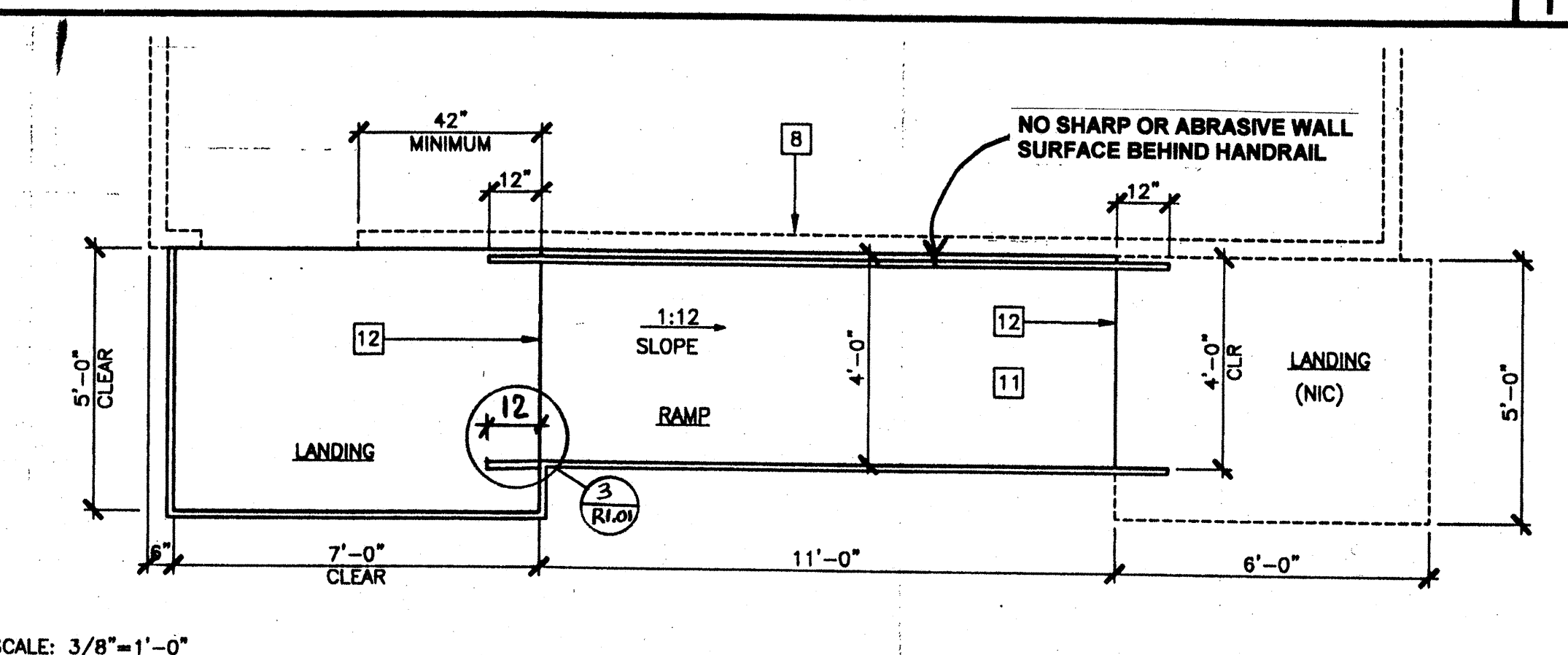
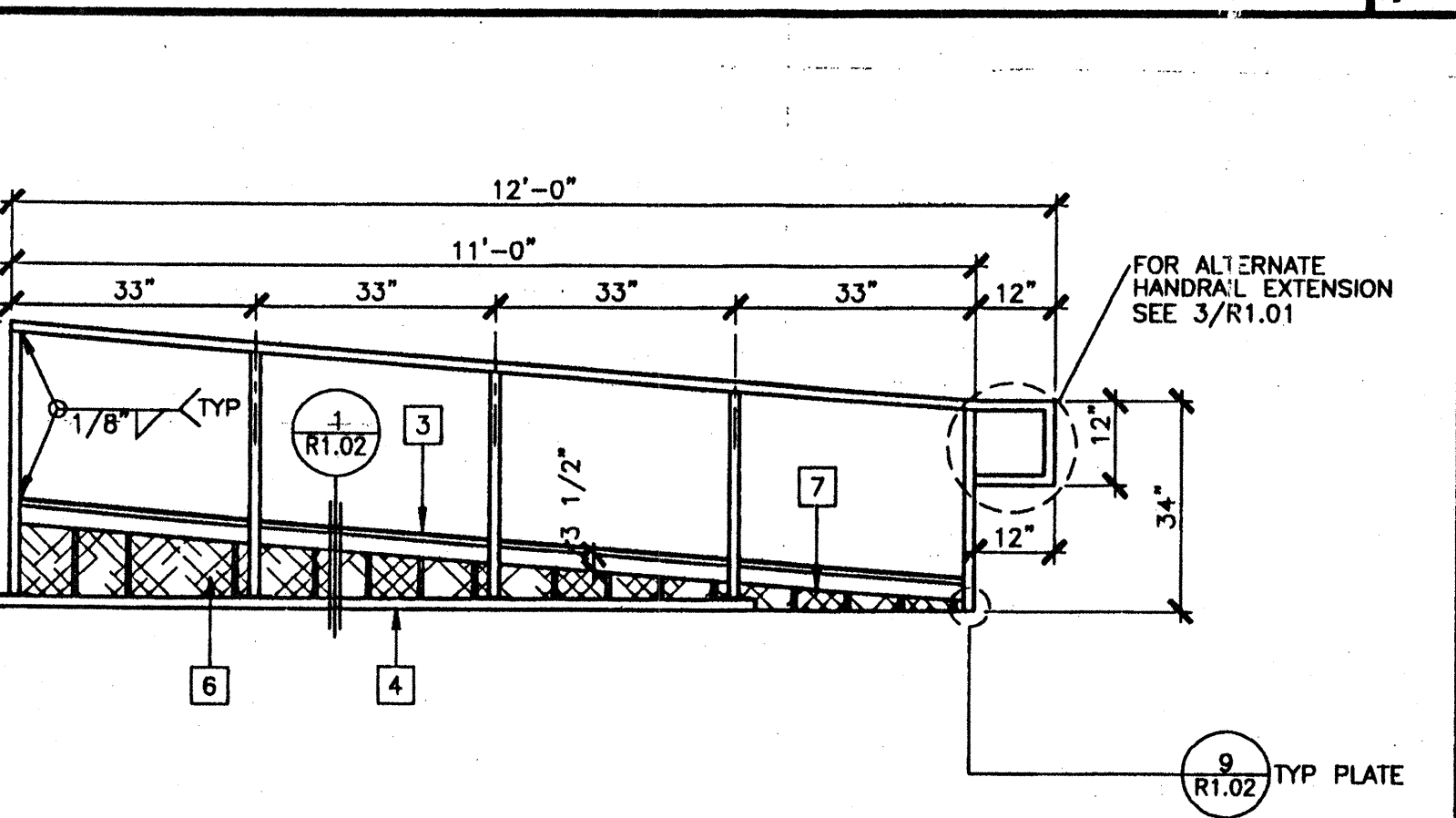
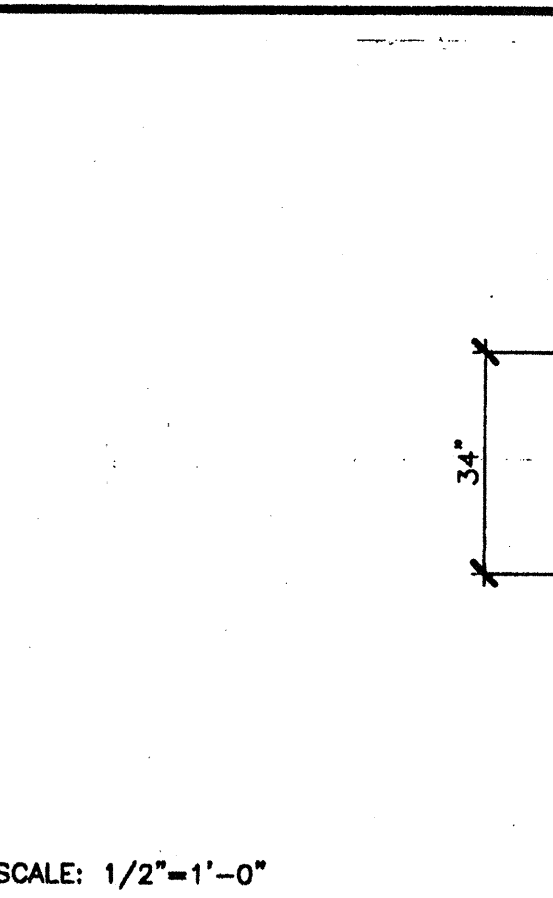
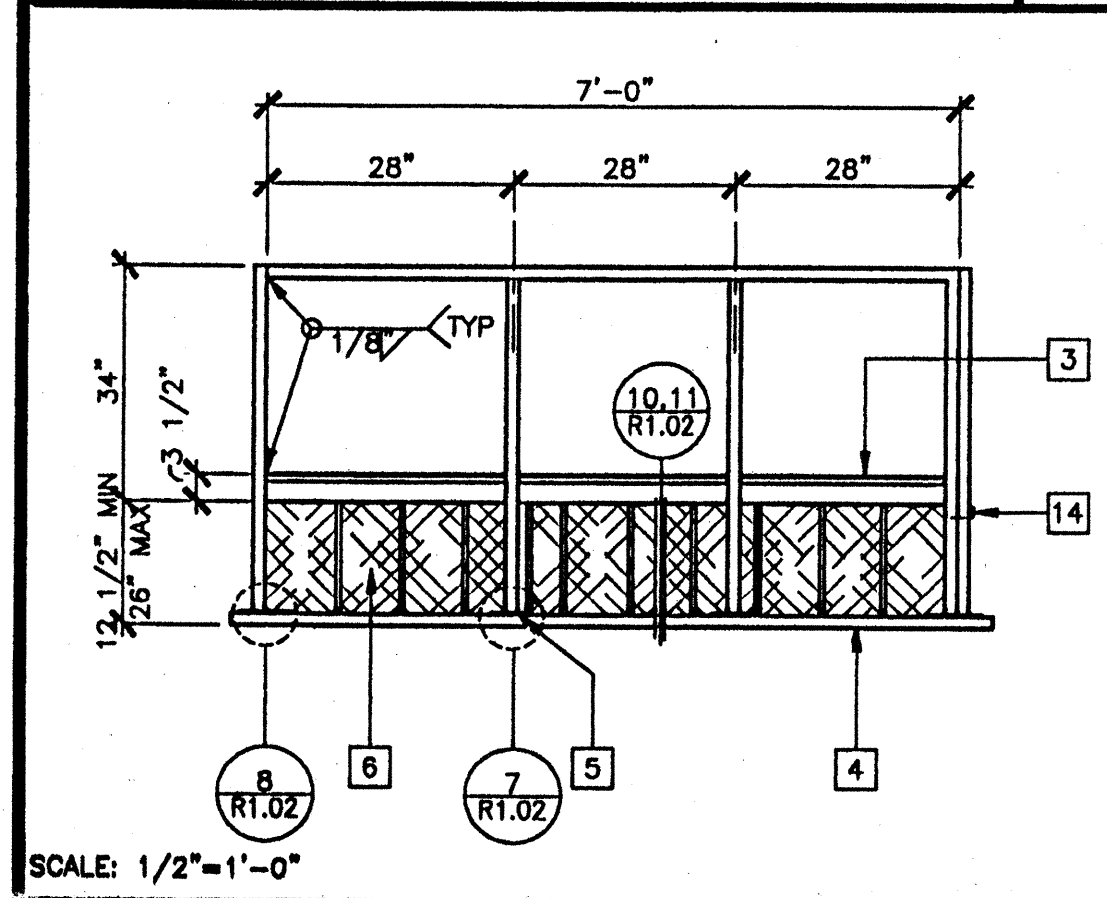


LANDING FRAME 12

RAMP FRAME 7

SILL PLAN FOR RAMP AND LANDING 1

RAMP AND LANDING AT BUILDING 2

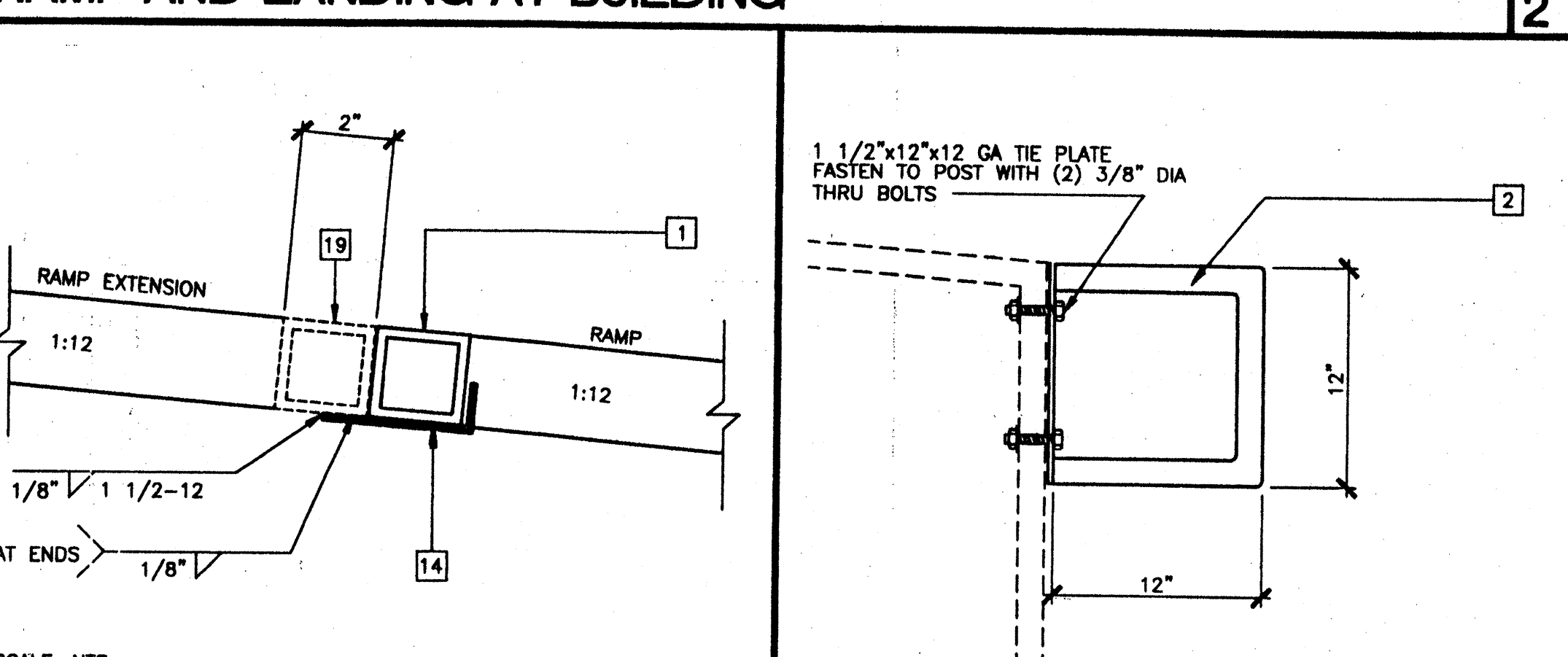
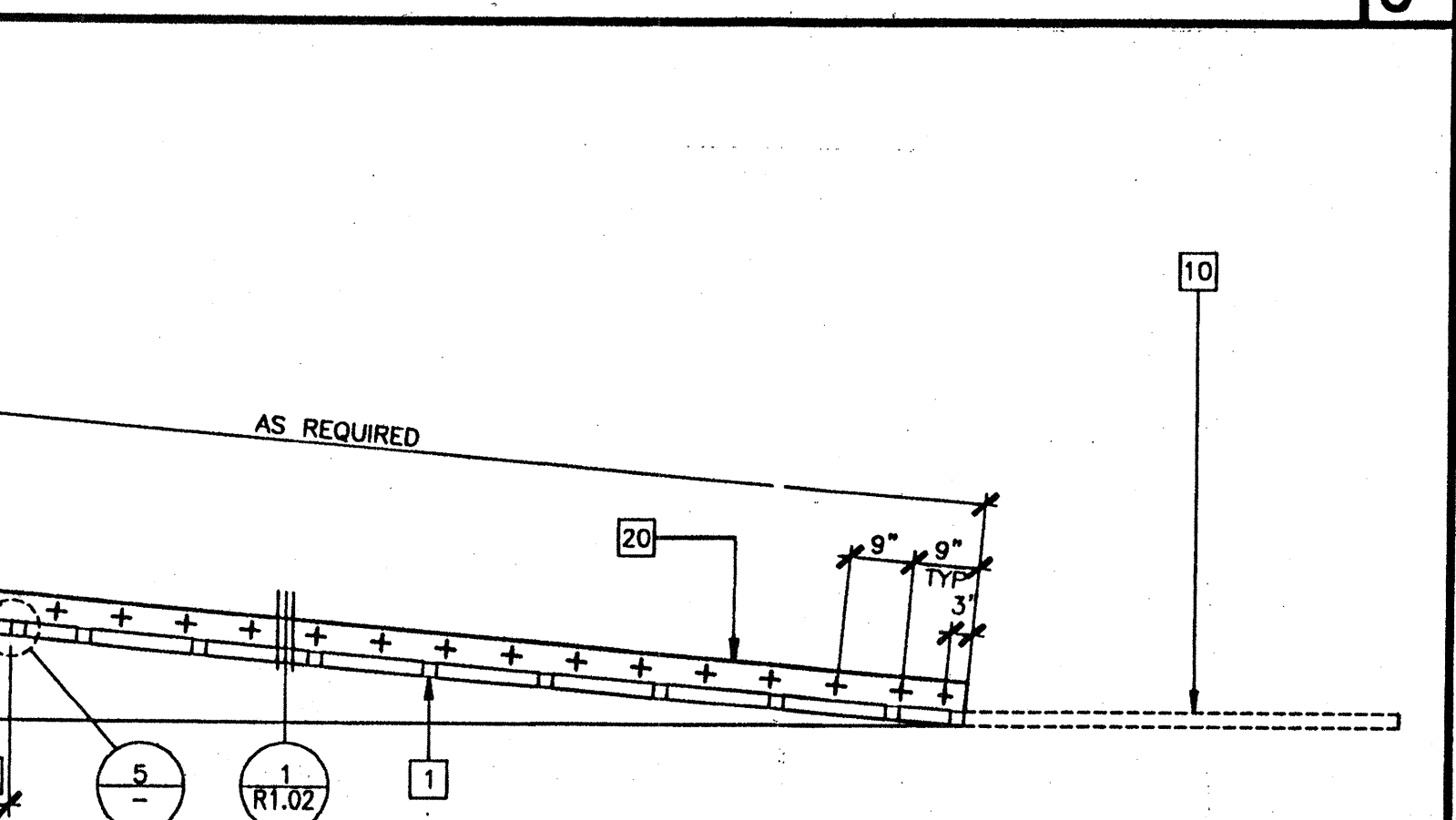
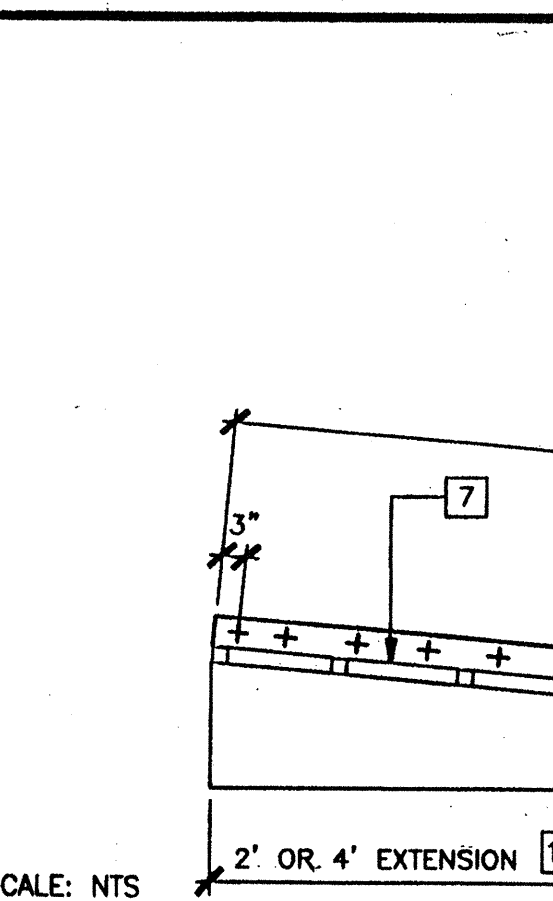
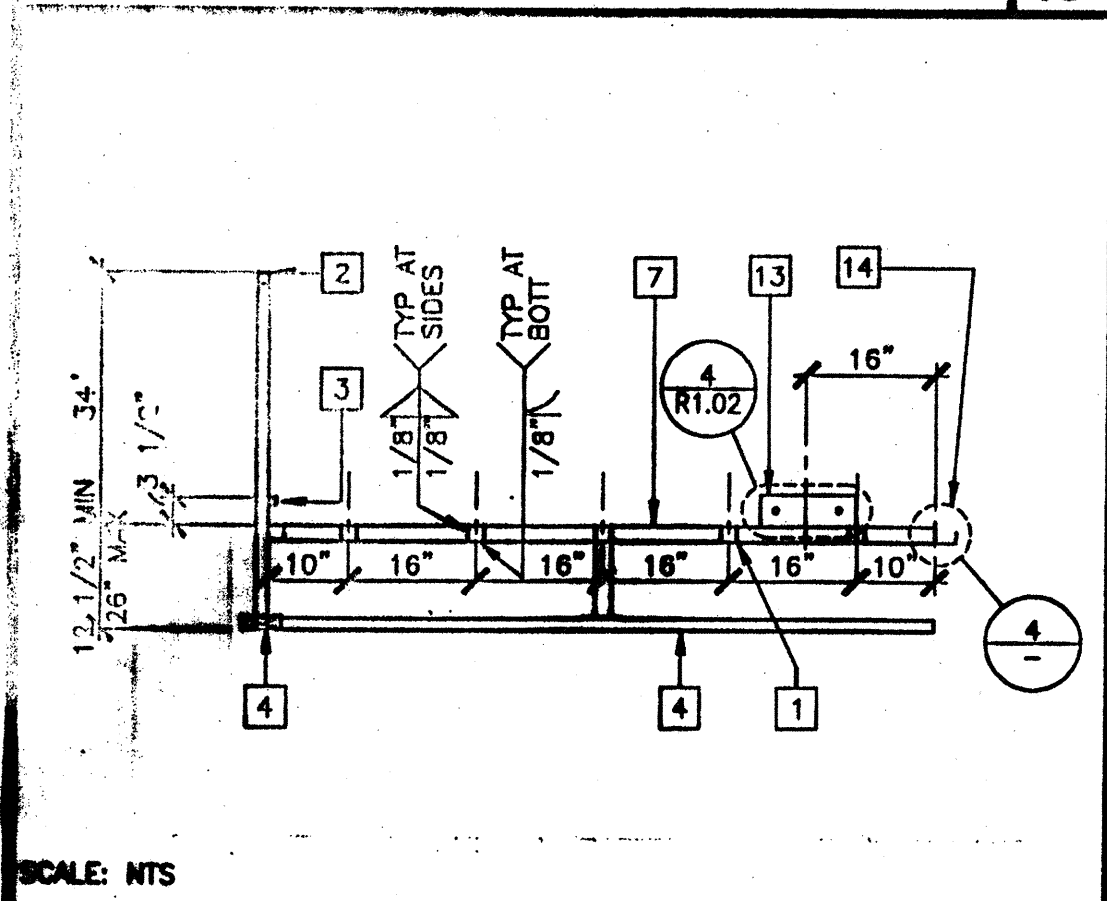


LANDING ELEVATION 13

RAMP ELEVATION 8

RAMP AND LANDING AT BUILDING 2

RAMP EXTENSION TO RAMP 5

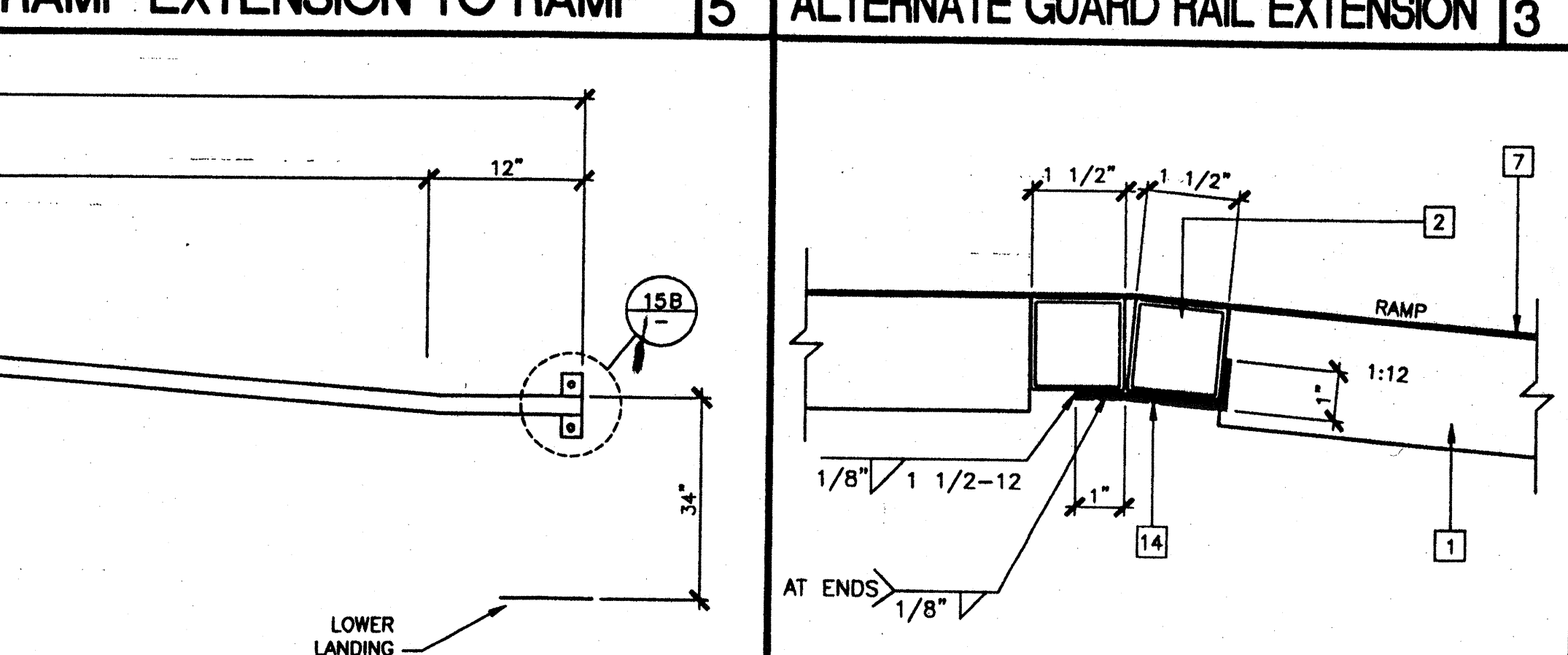
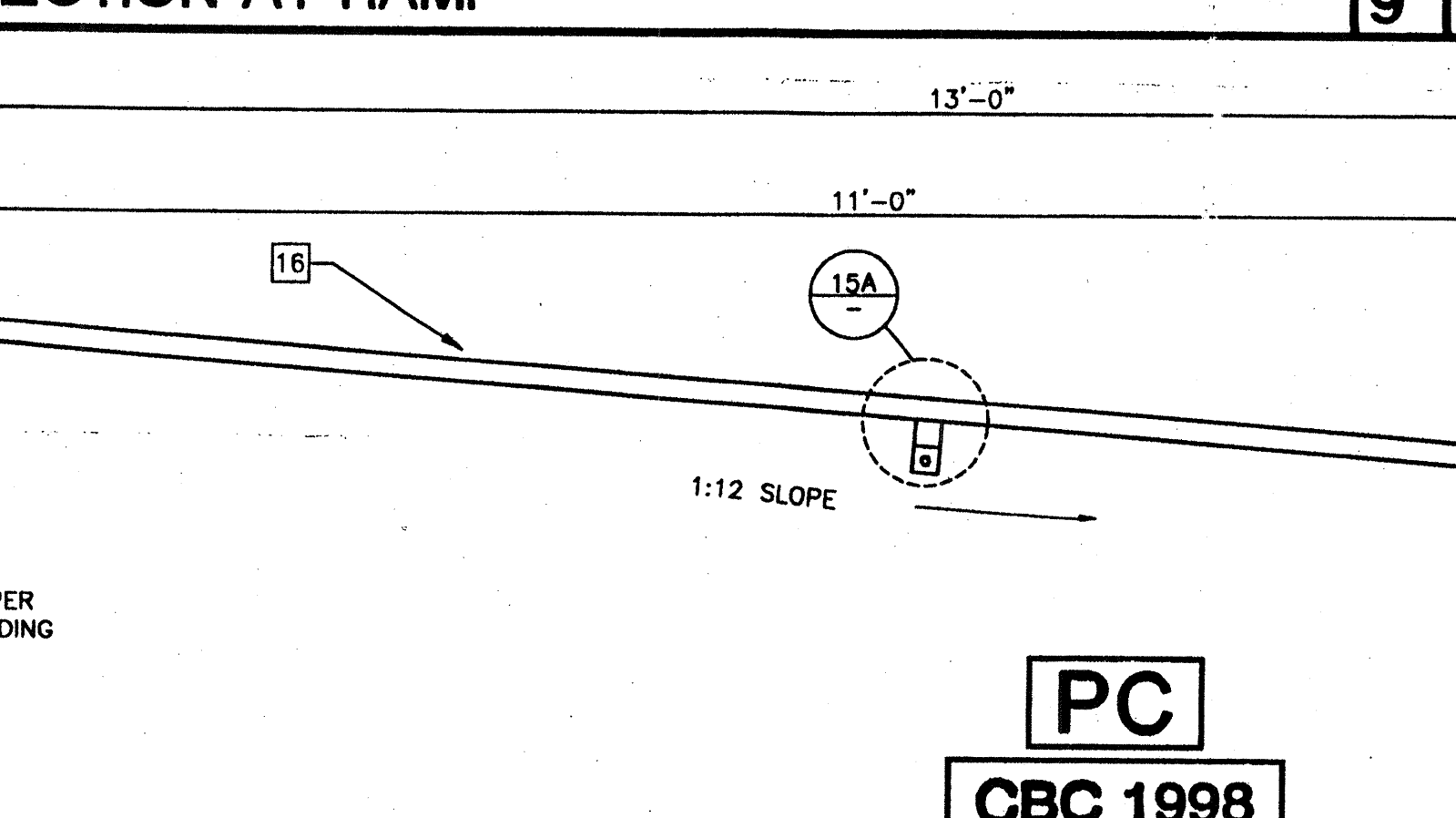
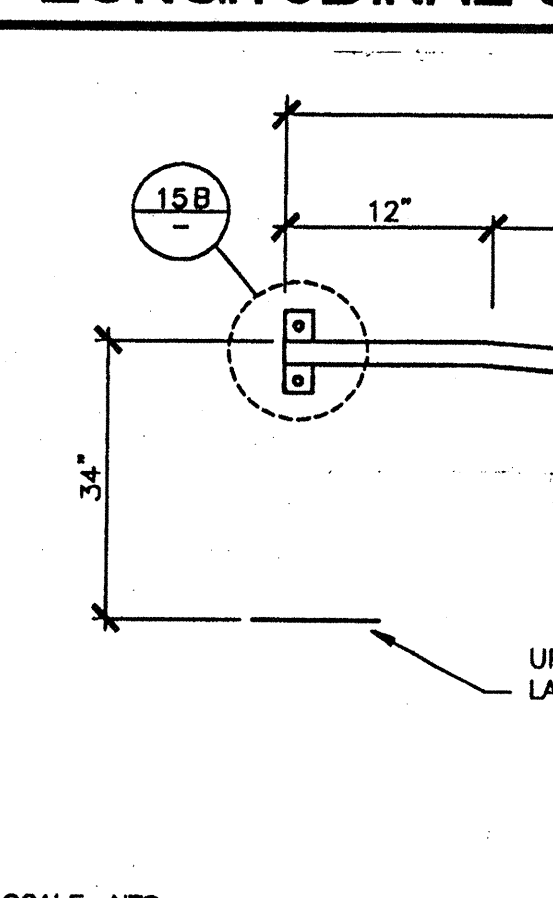
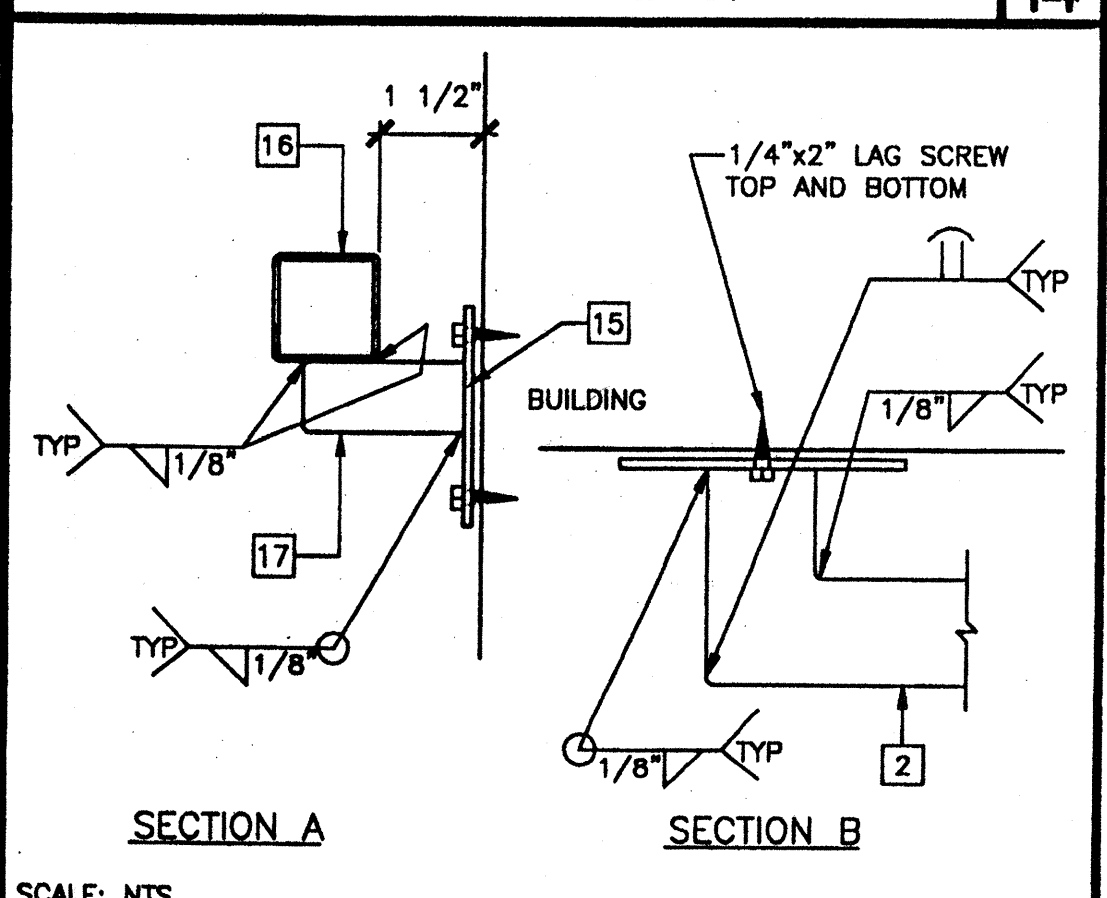


SECTION AT LANDING 14

LONGITUDINAL SECTION AT RAMP 9

RAMP EXTENSION TO RAMP 5

ALTERNATE GUARD RAIL EXTENSION 3



HANDRAIL CONNECTION 15

HANDRAIL ATTACHED TO BUILDING (OPTIONAL) 6

RAMP AT LANDING 4

RAMP AT LANDING 4

KEY NOTES

- 1 TS 2"x2"x14 GA
- 2 TS 1 1/2"x1 1/2"x14 GA (Fy = 39KSI). ROUNDED OR BEVELED AT CORNERS.
- 3 TS 1"x1"x16 GA WHEELCHAIR GUIDE
- 4 2"x6" PRESSURE TREATED SILL PLATE
- 5 2"x4"x12 GA BASE PLATE WITH (2) 1/4"x1" LAGS
- 6 SKIRTING: PLYWOOD TO MATCH BUILDING SIDING. BLOCK ALL EDGES. ATTACH WITH 8d AT 6" OC EDGES AND 12" OC FIELD. AT EDGE CONNECTION TO TUBE STEEL USE #14x2" TEK SCREWS AT 6" OC
- 7 12 GA METAL DECK: NON-SLIP SURFACE. DESIGN COEFFICIENT OF FRICTION GREATER THAN 6%. MAINTAINABLE FOR 1 YEAR EXISTING BUILDING
- 8 6"x10"x12 GA BASE PLATE AT RAMP TOE
- 9 LOWER LANDING BY DISTRICT
- 10 RAMP BY MODTECH
- 11 FLUSH TRANSITION
- 12 6"x12"x10 GA PLATE WITH (2) 1/4"x3" LAGS TO STRUCTURAL FRAME OF BUILDING
- 13 3"x1"x3'-0"x10 GA BENT PLATE
- 14 2"x4"x 1/8" PLATE
- 15 TS 1 1/2"x1 1/2"x14 GA HANDRAIL - CONTINUOUS AND UNINTERRUPTED ROUNDED OR BEVELED AT CORNERS.
- 16 TS 1"x1"x16 GA
- 17 LINE OF RAMP/LANDING ABOVE
- 18 RAMP EXTENSION FRAME
- 19 6"x10 GA CONTINUOUS PLATE WITH 1/4"x2" TEK SCREWS AT 9" OC INTO WOOD OR FOUNDATION BLOCKS OR #14x2" TEK SCREWS INTO STEEL AT 9" OC
- 20 NOTCH BOTTOM PLATE (MUD SILL) AS REQUIRED TO CLEAR RAMP TOE. MAX NOTCH 1 1/2"x4'-0" LONG.
- 21 NOTCH BOTTOM PLATE (MUD SILL) AS REQUIRED TO CLEAR RAMP TOE. MAX NOTCH 1 1/2"x4'-0" LONG.

IDENTIFICATION STAMP
 DIV. OF THE STATE ARCHITECT
 OFFICE OF REGULATION SERVICES
 34 102365
 APPO3 115335
 AC MP FLS ✓ SS 60
 DATE JAN 08 2014

NOTES

1. RAMPS: RAMPS SHALL NOT SLOPE MORE THAN 1" IN 12"
2. HANDRAILS: HANDRAILS AT BOTH SIDES OF RAMP AT 34" HEIGHT.
3. SURFACE: LANDING & RAMP TO HAVE NON-SLIP SURFACE AMCOR GRIP II AS MANUFACTURED BY AMERICAN CHEMICAL COMPANY (OR EQUAL)
4. GROUNDING: PROVIDE GROUNDING OF RAMP TO BUILDING FRAME WITH #8 COPPER TO BOTH ENDINGS.
5. ARCHITECT SITE/RAMP/LANDING PLANNING: DUE TO VARYING SITE CONDITIONS THE MAXIMUM HEIGHT OF FINISH FLOOR FROM GRADE IS 26". THEREFORE IT IS POSSIBLE THAT THE ACCESS RAMP ATTACHED TO THE BUILDING COULD BE 26'-0" AT A SLOPE OF 1:12. ARCHITECT MUST TAKE INTO ACCOUNT THAT THE RAMP SUPPLIED BY MODTECH INC. IS 11'-0" AT A SLOPE OF 1:12. THEREFORE THE ARCHITECT WILL HAVE TO DESIGN AND PROVIDE DETAILS OF RAMP EXTENSIONS AND BOTTOM LANDING DEPENDING ON PARTICULAR SITE CONDITIONS. IN NO WAY IS MODTECH INC RESPONSIBLE FOR ANY RAMP EXTENSION EXCEEDING THE ORIGINAL PLAN AS SHOWN ON THIS SHEET
6. ALL 1 1/4" AND 1 1/2" TUBE STEEL TO BE OF ASTM A500 GRADE A STEEL (Fy = 39 KSI)

REVISIONS

1		
2		
3		
4		
5		

Electrical Engineer's Seal

Mechanical Engineer's Seal

Structural Engineer's Seal

Architect's Seal

IDENTIFICATION STAMP
 DIV. OF THE STATE ARCHITECT
 OFFICE OF REGULATION SERVICES
 PC-04
 101268
 AC MP FLS ✓ SS 60
 DATE SEP 07 2000

MODTECH INC.
 2830 BARRETT AVENUE
 PERRIS, CALIF. 92572
 PH (909) 943-4014
 FAX (909) 940-0427

PROJECT NUMBER: 3904-3905-4010-4032-4134
 © MODTECH, INC. 1999
 STOCKPILE #53
 CLASS LEASING INC #3513
 4012-107 80 MPH
 100-24x40 CLASSROOMS
 MODTECH Index No.

DRAWN BY: 3860
 CHECKED BY: 3080
 DATE: 7/6/00
 3745
 3720
 3513
 R1.01

FILE PATH: 2440-01.DWG PROJECT NO. 3904-3905-4010-4032-4134