

ELECTRICAL PANEL SCHEDULE

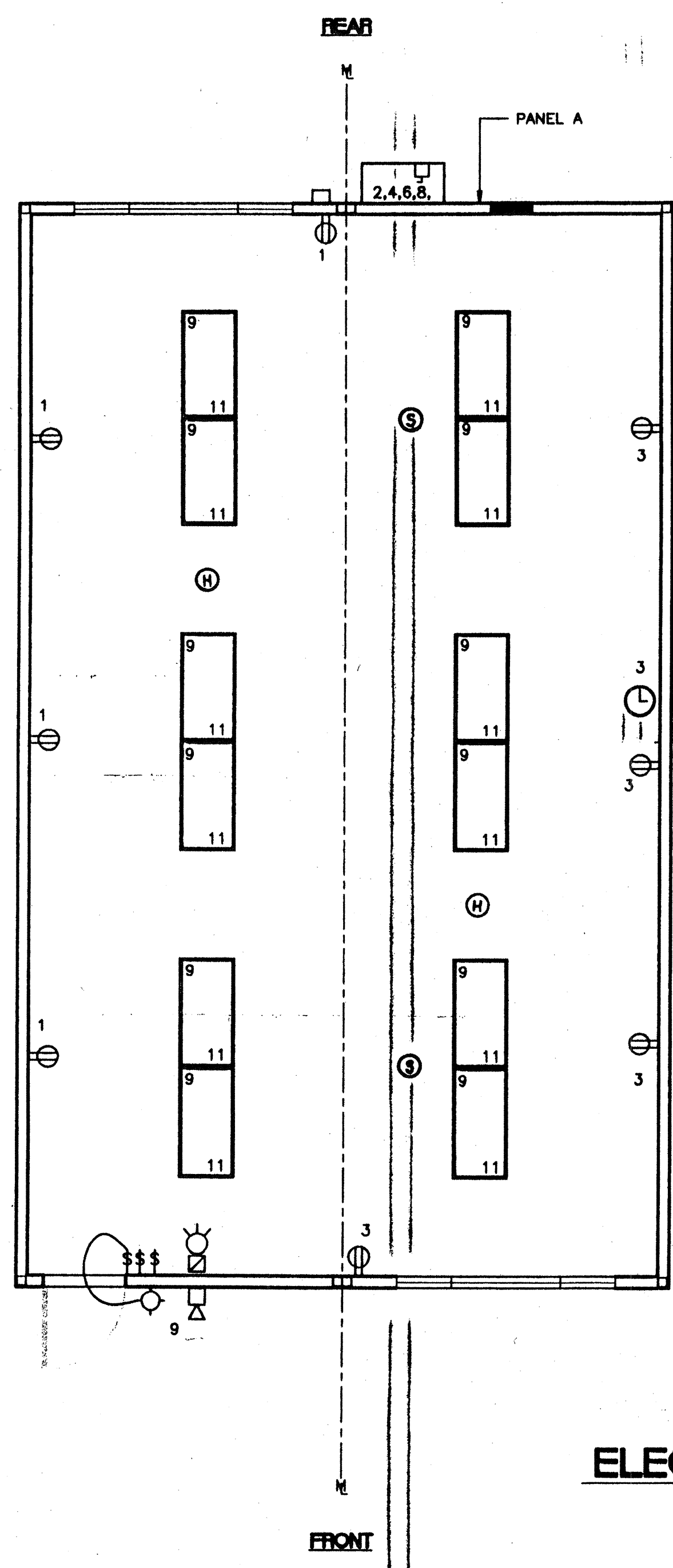
MAIN: 100 AMP 12 POLE		PANEL: A		FEED: REAR	
		LOCATION: REAR/INTERIOR		MOUNTING: FLUSH	
LOAD	WATTS		BREAKER		LOAD
	A#	B#	Amps	P	
RECEPTACLE (4)	720		20	1	HVAC (3 1/2T)
RECEPTACLE/CLOCK (5)	720		20	1	HVAC (3 1/2T)
					HEAT STRIPS (5KW)
					HEAT STRIPS (5KW)
INT/EXT LIGHTS (13)	900		20	1	
INT. LIGHTS (12)		840	20	1	
WATTS/PHASE	A = 7480	1620	1560		40 FIRE ALARM (DEDICATED)
TOTAL	15385	WATTS	65	AMPS	120/240 VOLTS
NCL =	13160	WATTS			SINGLE # THREE WIRE

GENERAL GROUNDING NOTES

- EACH BUILDING SHALL BE SEPARATELY GROUNDING WITH A 3/4" RD. X 8' COPPERCLAD STEEL GROUND ROD. WHERE ROCK BOTTOM IS ENCOUNTERED, ROD SHALL BE DRIVEN AT AN ANGLE NOT TO EXCEED 45 DEGREE'S FROM THE VERTICAL OR SHALL BE BURIED IN A TRENCH THAT IS AT LEAST 30" DEEP (BY SITE ELECTRICAL).
- TESTING: TEST FOR RESISTANCE TO GROUND. IF RESISTANCE EXCEEDS 25 OHMS, INSTALL ADDITIONAL GROUND RODS SEPARATED AT LEAST 6'-0" UNTIL RESISTANCE IS REDUCED TO 25 OHMS OR LESS. (BY SITE ELECTRICAL)
- APPROVAL OF THIS PLAN DOES NOT CONSTITUTE APPROVAL OF THIS FIRE ALARM FOR ALL SITES. THE FIRE ALARM SYSTEM AND/OR COMPONENTS MAYBE REQUIRED TO BE CHANGED DUE TO SITE LOCATION, EXISTING CONDITIONS OR INCOMPATIBLE COMPONENTS.
- GROUND MG TEST SHALL BE DONE IN THE PRESENCE OF THE PROJECT INSPECTOR. ALL GROUNDING SHALL BE IN ACCORDANCE WITH CEC ARTICLE 250.

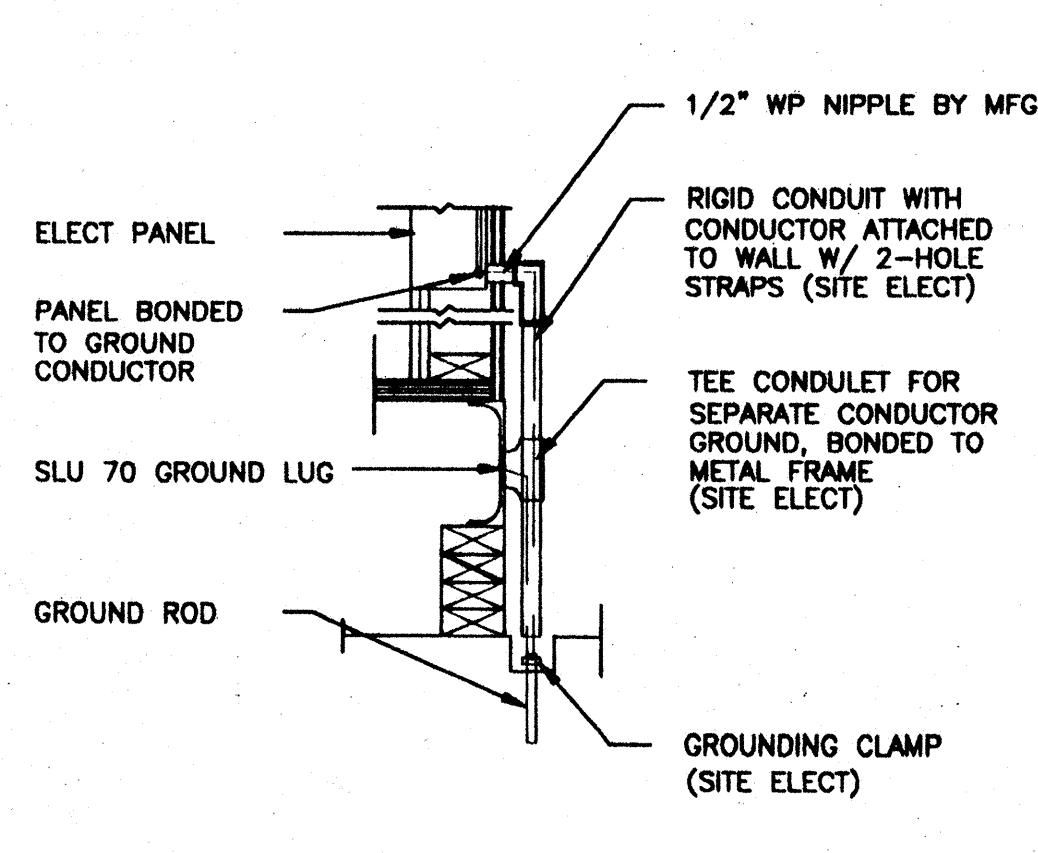
ELECTRICAL LEGEND

- 2'x4' 4 TUBE FLUORESCENT LIGHT FIXTURE
- EXTERIOR LIGHT FIXTURE AT +93" AFF
- SWITCH AT +48" AFF
- 3WAY SWITCH AT +48" AFF UON
- DUPLEX WALL RECEPTACLE 15A 125V 3-WIRE AT +18" AFF UON
- HVAC UNIT (HV)
- 4SD J-BOX FOR FIRE ALARM PULL STATION AT +48" AFF, TO 3/4" CO TO PULLSTRING
- 4SD J-BOX FOR FIRE ALARM STROBE AT +80" AFF 3/4" CO TO PULLSTRING
- 4SD J-BOX FOR FIRE ALARM HORN AT +96" AFF 3/4" CO TO PULLSTRING
- WEATHER PROOF GUTTER BOX (6"x6"x4") AT +18" AFF RECEIVE 3/4" CO FROM FA DEVICE, PULLSTRING
- ELECTRICAL PANEL AT +60" AFF TO CENTERLINE 1 1/4" POWER NIPPLE POC, GND JUMPER BY SITE ELECT
- CLOCK AT +90" AFF
- 4SD J BOX FOR HEAT DETECTOR (ATTIC)
- 4SD J BOX FOR SMOKE DETECTOR (ATTIC)

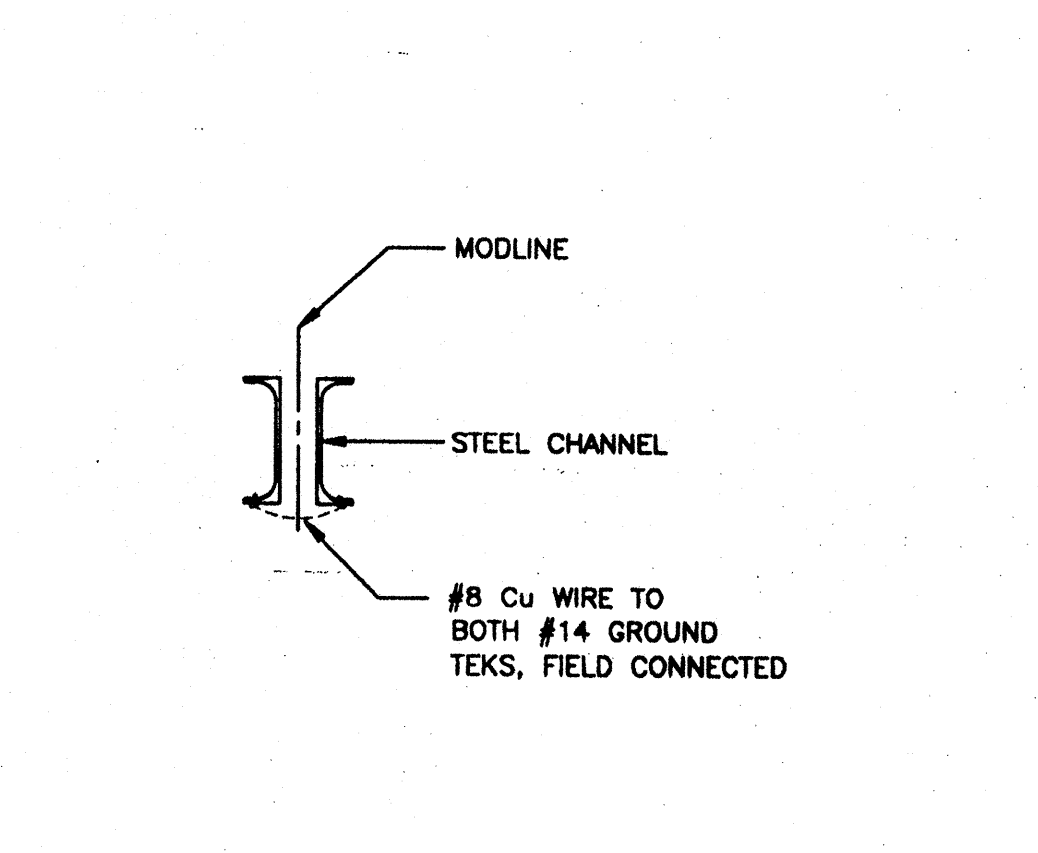


SEE SHEET A8.01
FOR TOILET ROOM
OPTION

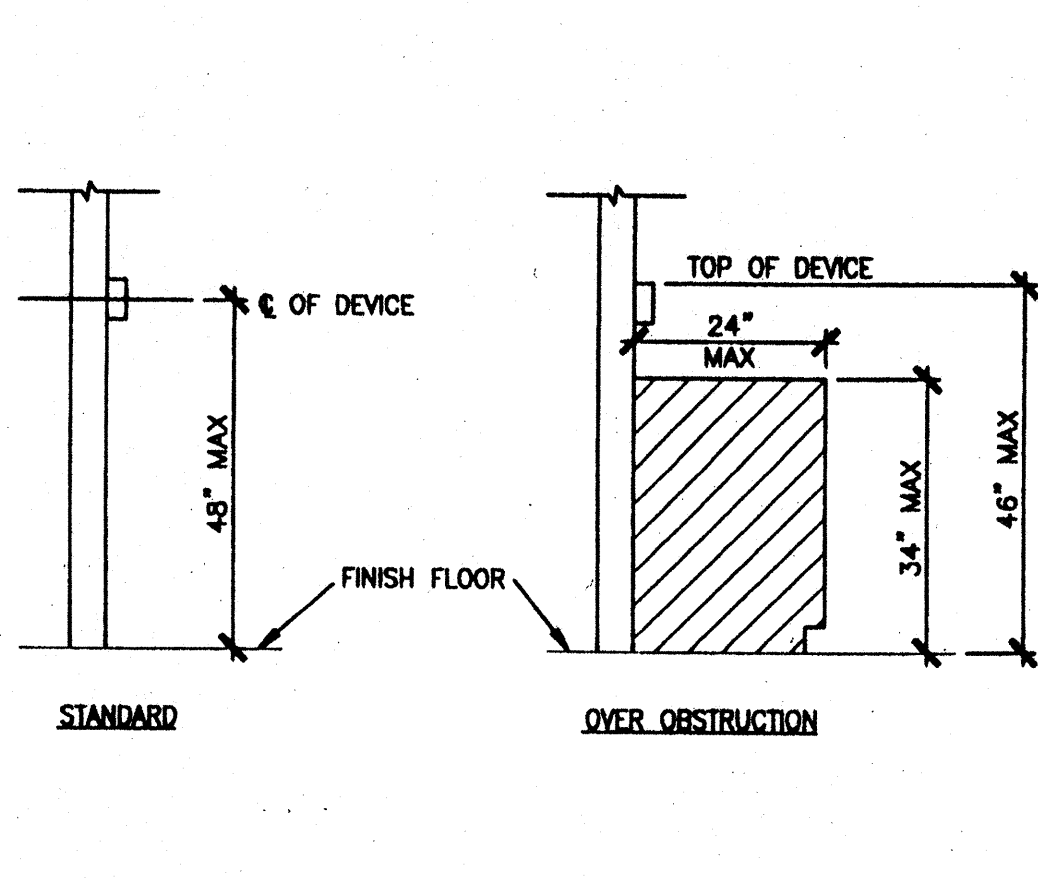
ELECTRICAL PLAN (24'x40')
SCALE: 1/4" = 1'-0"



TYP GROUNDING DETAIL 1



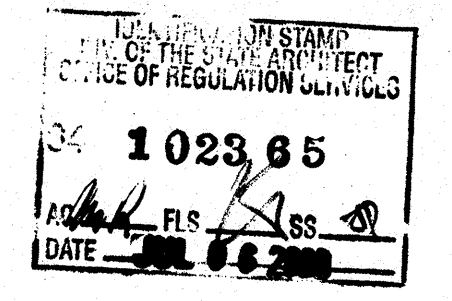
GROUND JUMPER AT MOD LINE 2



DEVICE MOUNTING 3

NOTES

- SCHOOL EQUIPMENT ANCHORAGE
THE FOLLOWING IS FOR THE ARCHITECTS INFORMATION ONLY:
THE SEISMIC ANCHORAGE OF ELECTRICAL EQUIPMENT SHALL CONFORM TO CCR TITLE 24, SECTION 1832A AND TABLE 18A-0. ANCHORAGE DETAILS FOR ROOF/FLOOR MOUNTED EQUIPMENT WEIGHING LESS THAN 400 LBS & HUNG EQUIPMENT WEIGHING LESS THAN 20 LBS MAY BE OMITTED FROM THE PLANS.
ALL ELECTRICAL EQUIPMENT SHALL BE BRACED OR ANCHORED TO RESIST A HORIZONTAL FORCE ACTING IN ANY DIRECTION USING THE FOLLOWING CRITERIA:
EQUIPMENT ON GRADE 20% OF OPERATING WEIGHT
EQUIPMENT ON STRUCTURE 30% OF OPERATING WEIGHT
FOR FLEXIBLY MOUNTED EQUIPMENT USE 4 TIMES THE ABOVE VALUES, AND FOR SIMULTANEOUS VERTICAL FORCE USE 1/3 TIMES THE HORIZONTAL FORCE.
THE ABOVE VALUES ARE FOR AN IMPORTANCE FACTOR, I = 1.0 AND SEISMIC ZONE, Z = 4.
WHERE ANCHORAGE DETAILS ARE NOT SHOWN ON THE DRAWINGS THE FIELD INSTALLATION SHALL BE SUBJECT TO THE APPROVAL OF THE ARCHITECT AND THE FIELD ENGINEER OF THE OFFICE OF THE STATE ARCHITECT.
- SMOKE AND HEAT DETECTORS SHOWN ARE FOR OPTIONAL AUTOMATIC DETECTION. IF ELECTED AS AN OPTION MODTECH WILL PROVIDE 4SD BOXES AND 3/4" CO MOUNTED ON UNDERSIDE OF ROOF PURLINS. DEVICES PROVIDED AND INSTALLED BY OTHERS



IDENTIFICATION STAMP
DIV. OF THE STATE ARCHITECT
APPROX 115335
AC MP FLS 4 SS 90
DATE JAN 08 2014

REVISIONS	Electrical Engineer's Seal	Mechanical Engineer's Seal	Structural Engineer's Seal	Architect's Seal
1				
2				
3				
4				
5				

Professional Engineer's Seal for Modtech Inc. License No. 101268, dated SEP 17 1998.

PC
CBC 1998

MODTECH INC.
2830 BARRETT AVENUE
PERRIS, CALIF. 92572
PH (909) 943-4014
FAX (909) 940-0427

PROJECT NUMBER: MODTECH, INC. 1999

STOCKPILE #53
CLASS LEASING INC #3513
4012-107 80 MPH
100-24x40 CLASSROOMS

DRAWN BY: 3860
CHECKED BY: 3880
DATE: 7/6/00
DATE: 3/7/05
DATE: 3/7/05
DATE: 3/7/05

E1.01

3904, 3905 4032
PROJECT NO. 3513
PC-04-101268