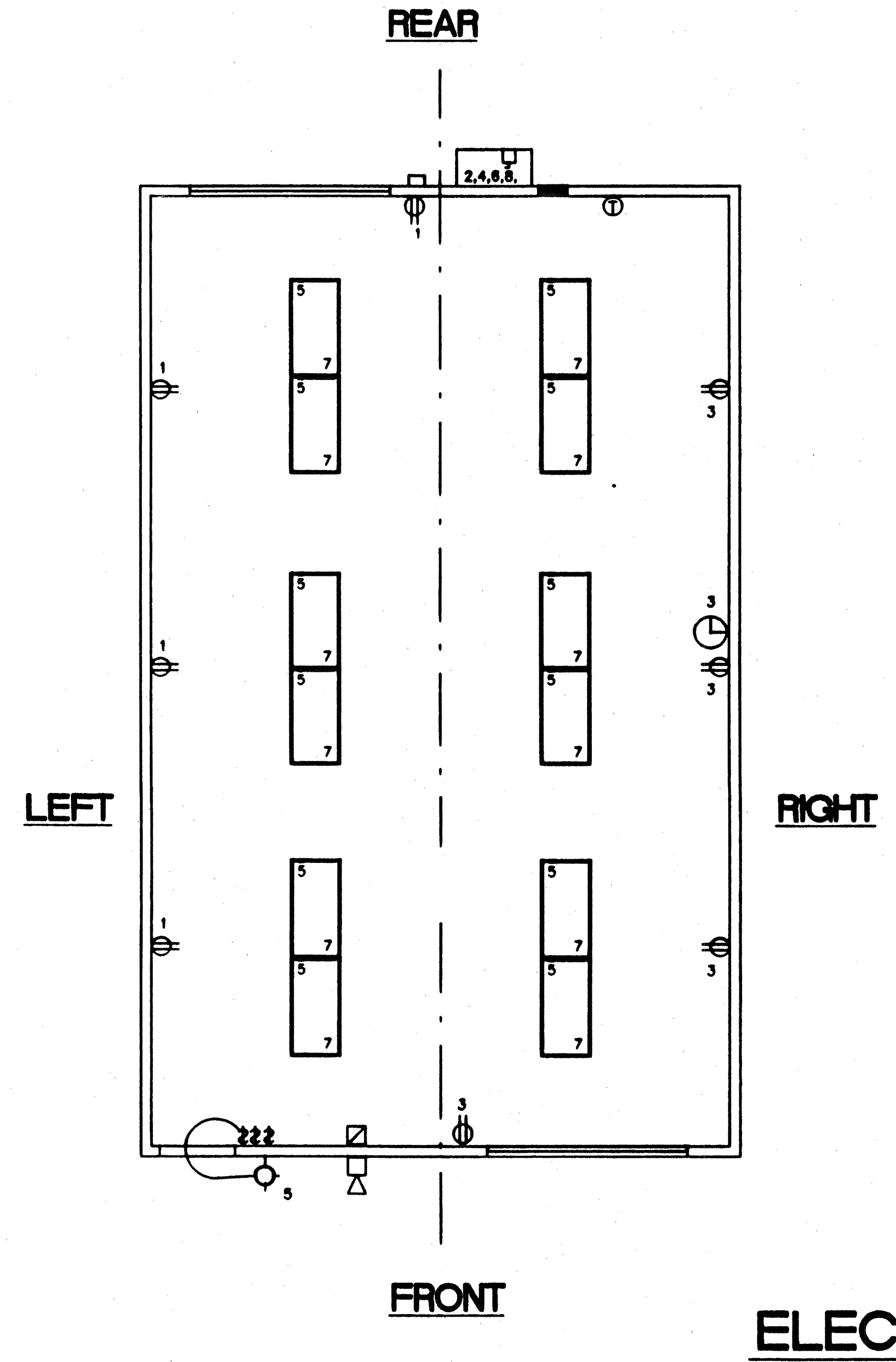


ELECTRICAL PANEL SCHEDULE

| LOAD | WATTS | | BREAKER | | PANEL LOCATION | | FEED | | LOAD | |
|-------------------------|----------------|----------------|---------|------|----------------|---------|-------|---------------|--------------|-------------|
| | A ¹ | B ² | Amps | P | REAR | FLUSH | Amps | WATTS | | |
| RECEPTACLE (4) | 720 | | 20 | 1 | 1 | | 2 | 250 | HVAC 3.5 (T) | |
| RECEPTACLE / CLOCK (5) | 900 | | 20 | 1 | 3 | | 4 | — | HVAC 3.5 (T) | |
| INT. / EXT. LIGHTS (25) | 876 | | 20 | 1 | 5 | | 6 | 30 | HVAC (HS) | |
| INTERIOR LIGHTS (24) | 816 | | 20 | 1 | 7 | | 8 | | HVAC (HS) | |
| FA (DEDICATED) | 40 | | | | | | 10 | | | |
| | | | | | 11 | | 12 | | | |
| | | | | | 13 | | 14 | | | |
| | | | | | 15 | | 16 | | | |
| | | | | | 17 | | 18 | | | |
| WATTS/PHASE | | A = 7,036 | 1636 | 1716 | | | 540 | 540 | B = 7,116 | WATTS/PHASE |
| TOTAL | | 14,575 | WATTS | 61 | AMPS | 120/240 | VOLTS | SINGLE ϕ | THREE | WIRE |
| NCL = | | 12,460 | W | | | | | | | |

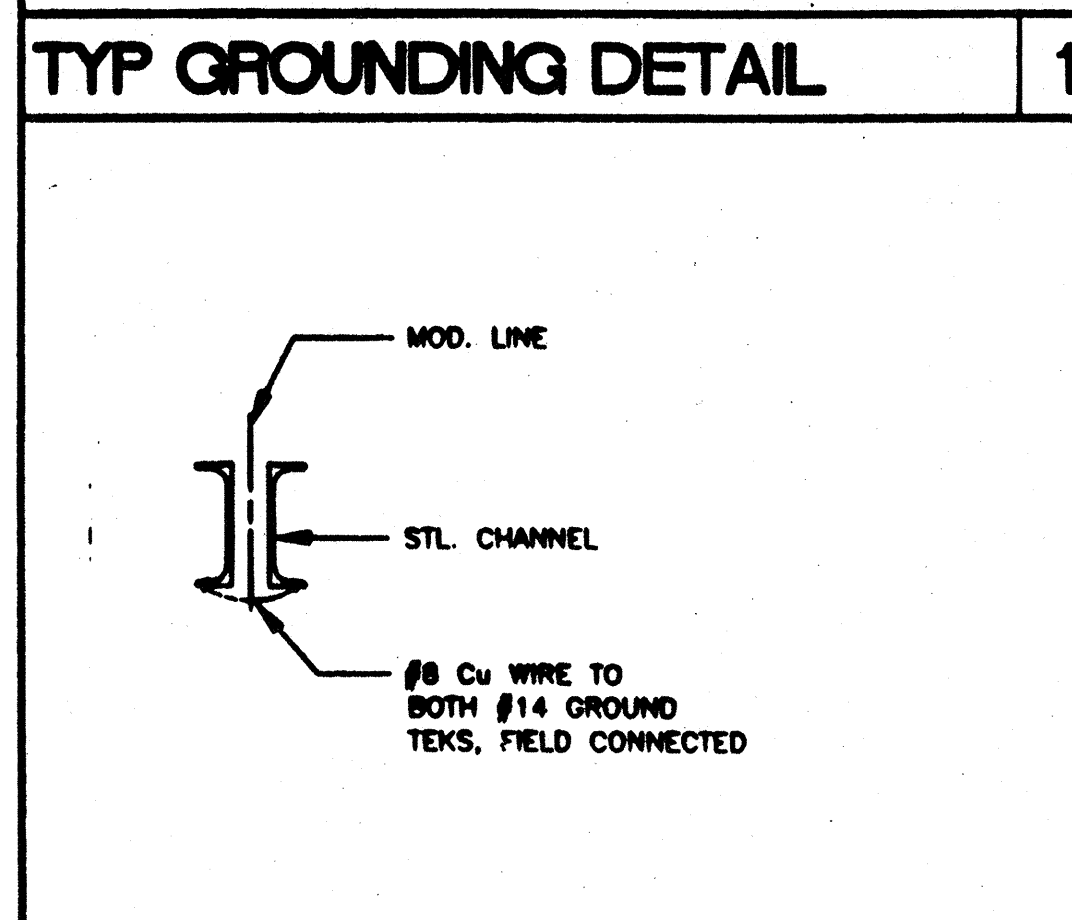
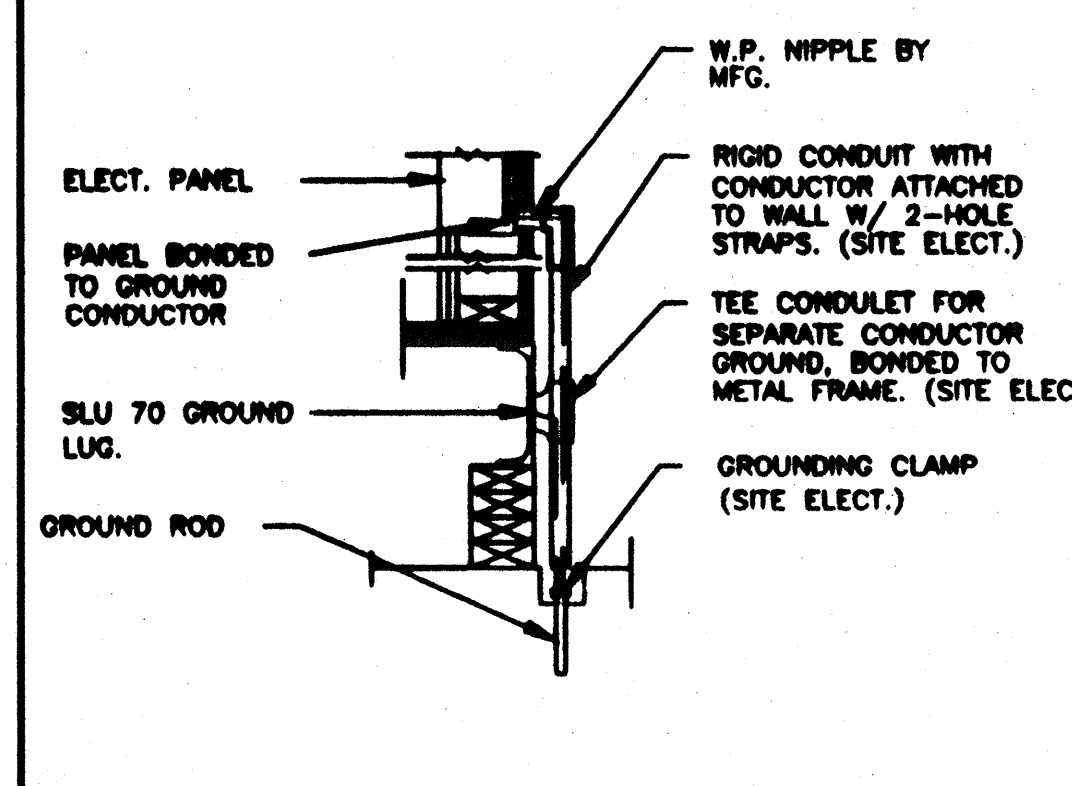
- ### GENERAL GROUNDING NOTES
- EACH BUILDING SHALL BE SEPARATELY GROUNDING WITH A 3/4" RD. X 8' COPPERCLAD STEEL GROUND ROD. WHERE ROCK BOTTOM IS ENCOUNTERED, ROD SHALL BE DRIVEN AT AN ANGLE NOT TO EXCEED 45 DEGREE'S FROM THE VERTICAL OR SHALL BE BURIED IN A TRENCH THAT IS AT LEAST 30" DEEP. (BY SITE ELECTRICAL)
 - TESTING: TEST FOR RESISTANCE TO GROUND. IF RESISTANCE EXCEEDS 25 OHMS, INSTALL ADDITIONAL GROUND RODS SEPARATED AT LEAST 6'-0" UNTIL RESISTANCE IS REDUCED TO 25 OHMS OR LESS. (BY SITE ELECTRICAL)
 - PROVIDE EQUIPMENT ANCHORAGE PER TITLE 24, TABLE 16 J, PART B.
 - APPROVAL OF THIS PLAN DOES NOT CONSTITUTE APPROVAL OF THIS FIRE ALARM FOR ALL SITES. THE FIRE ALARM SYSTEM AND/OR COMPONENTS MAYBE REQUIRED TO BE CHANGED DUE TO SITE LOCATION, EXISTING CONDITIONS OR INCOMPATIBLE COMPONENTS.
 - GROUNDING TEST SHALL BE DONE IN THE PRESENCE OF THE PROJECT INSPECTOR. ALL GROUNDING SHALL BE IN ACCORDANCE WITH C.E.C. ARTICLE 250.

- ### ELECTRICAL LEGEND
- 2'x4' 4 TUBE FLUORESCENT LIGHT FIXTURE
 - EXTERIOR LIGHT FIXTURE AT +90" AFF
 - DUPLEX WALL RECEPTACLE 15-A 125-V 3-WIRE AT +18" AFF U.N.O.
 - THERMOSTAT. + 48" AFF (HV)
 - HVAC UNIT (HV)
 - 4s 'J' BOX FOR INT. FA PULL BOX. +48" AFF 3/4" CO TO PULLSTRING.
 - 4s 'J' BOX FOR EXT. HORN/BELL. +96" AFF 3/4" CO STUB IN ATTIC. PULLSTRING.
 - (6x6x4) WEATHER PROOF GUTTER BOX + 18" AFF 3/4" CO STUB IN ATTIC. PULLSTRING.
 - ELECTRICAL PANEL. + 60" AFF (E)
 - SWITCH +48" A.F.F.
 - CLOCK. +96" AFF



ELECTRICAL PLAN (24' X 40')

1/4" = 1'-0"



- ### NOTES
- SCHOOL EQUIPMENT ANCHORAGE
THE FOLLOWING IS FOR THE ARCHITECTS INFORMATION ONLY:
THE SEISMIC ANCHORAGE OF ELECTRICAL EQUIPMENT SHALL CONFORM TO C.C.R. TITLE 24, SECTION 2312 (a) AND TABLE 23-P. ANCHORAGE DETAILS FOR ROOF/FLOOR MOUNTED EQUIP. WEIGHING LESS THAN 400 LBS. & HUNG EQUIPMENT WEIGHING LESS THAN 20 LBS. MAY BE OMITTED FROM THE PLANS.
FOR ELECTRICAL DRAWINGS:
ALL ELECTRICAL EQUIPMENT SHALL BE BRACED OR ANCHORED TO RESIST A HORIZONTAL FORCE ACTING IN ANY DIRECTION USING THE FOLLOWING CRITERIA:

| | |
|------------------------|-------------------------|
| EQUIPMENT ON GRADE | 20% OF OPERATING WEIGHT |
| EQUIPMENT ON STRUCTURE | 30% OF OPERATING WEIGHT |

FOR FLEXIBLY MOUNTED EQUIPMENT USE 4 X THE ABOVE VALUES, AND FOR SIMULTANEOUS VERTICAL FORCE USE 1/3 X THE HORIZONTAL FORCE.
THE ABOVE VALUES ARE FOR AN IMPORTANCE FACTOR, I = 1.0 AND SEISMIC ZONE, Z = 0.4.
WHERE ANCHORAGE DETAILS ARE NOT SHOWN ON THE DRAWINGS THE FIELD INSTALLATION SHALL BE SUBJECT TO THE APPROVAL OF THE ARCHITECT AND THE FIELD ENGINEER OF THE OFFICE OF THE STATE ARCHITECT.

IDENTIFICATION STAMP
DIV. OF THE STATE ARCHITECT
OFFICE OF REGULATION SERVICES
04 100596
AC FL 15 88
DATE AUG 10 1998

IDENTIFICATION STAMP
DIV. OF THE STATE ARCHITECT
OFFICE OF REGULATION SERVICES
APPROVED
AC FL 15 88
DATE JAN 06 2014

STKP-37

REVISIONS

| NO. | DESCRIPTION | DATE |
|-----|-------------|------|
| 1 | | |
| 2 | | |
| 3 | | |
| 4 | | |
| 5 | | |

REVISIED

| | | | | |
|----------------------------|----------------------------|----------------------------|------------------|--|
| Electrical Engineer's Seal | Mechanical Engineer's Seal | Structural Engineer's Seal | Architect's Seal | Division of the State Architect |
| | | | | <p style="font-size: small;">IDENTIFICATION STAMP DIV. OF THE STATE ARCHITECT OFFICE OF REGULATION SERVICES</p> <p style="font-size: large; font-weight: bold;">PC-266</p> <p style="font-size: x-small;">AC FL 15 88 DATE JUN 25 1997</p> |

MODTECH INC.

2830 BARRETT AVENUE
PERRIS, CALIF. 92572

PH (909) 943-4014
FAX (909) 940-0427

| | | |
|-------------------------|----------------------------------|--|
| PROJECT NUMBER: 2900 | © MODTECH, INC. 1997 4012-083 | <p style="font-size: x-small;">drawn by: PFL date: 12/15/97 checked by: PFL date: 1/15/98 project no: 27652 28524 28954 29008 28018</p> <p style="font-size: x-small;">MODTECH Index No.</p> |
| ELECTRICAL PLAN | | E1.0 |

PROJECT NO. PC-266