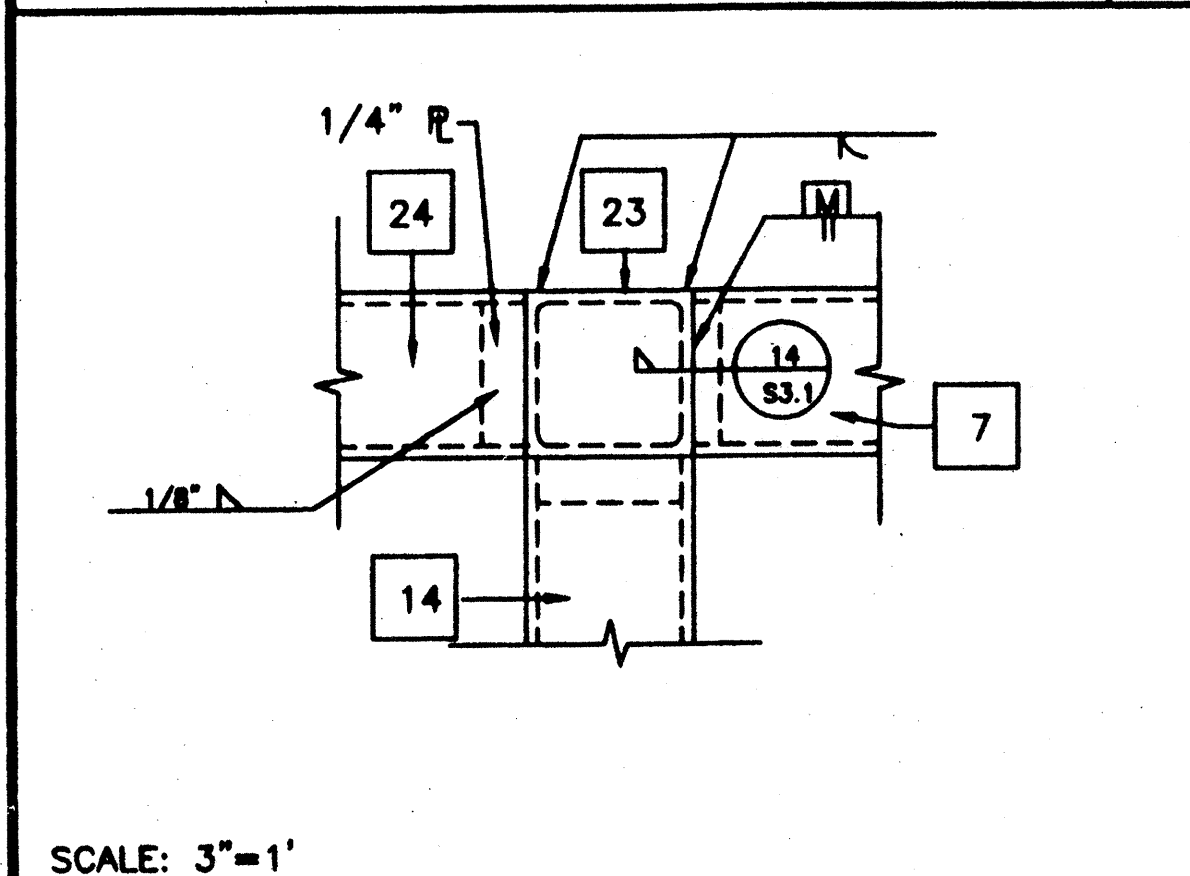
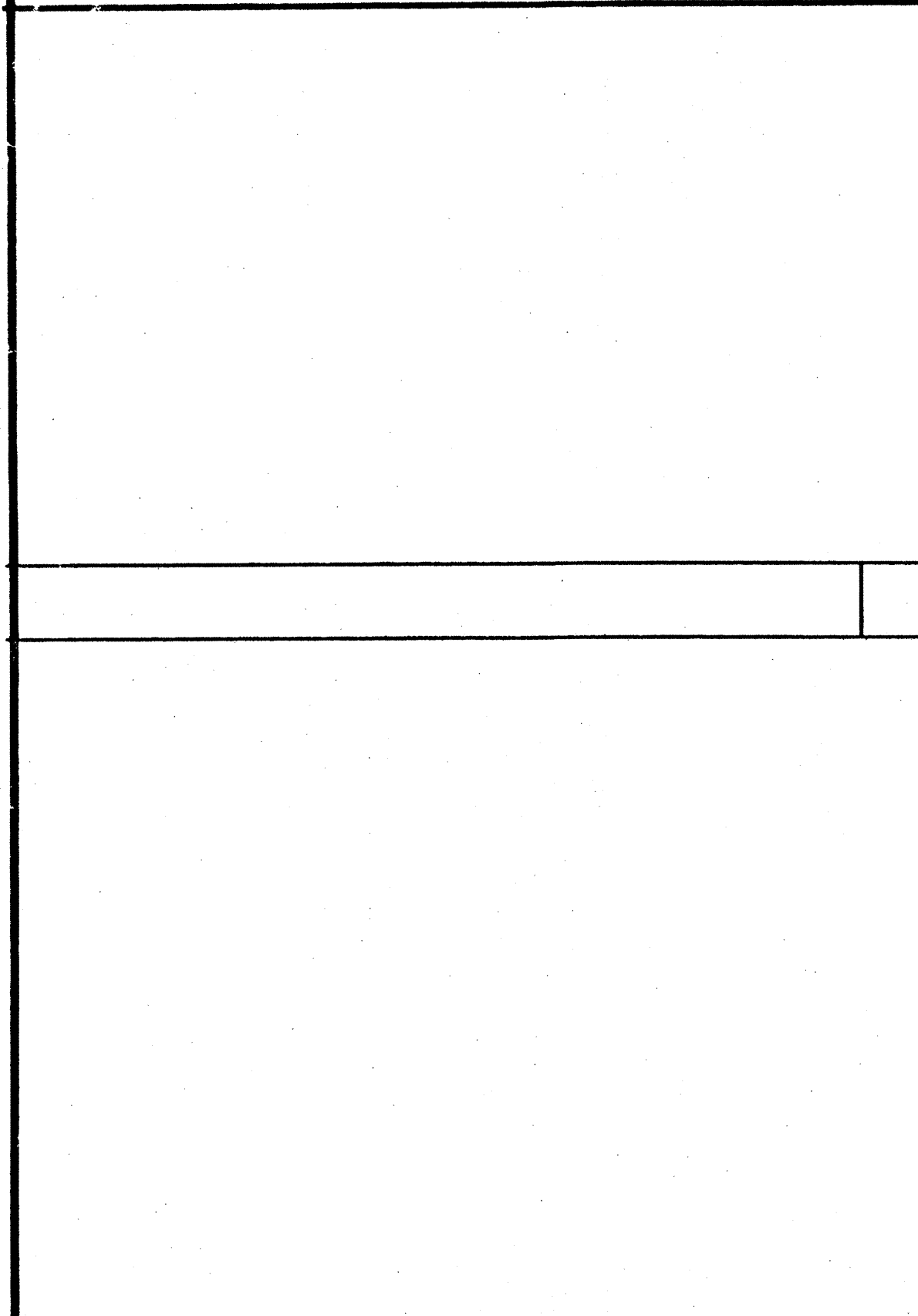


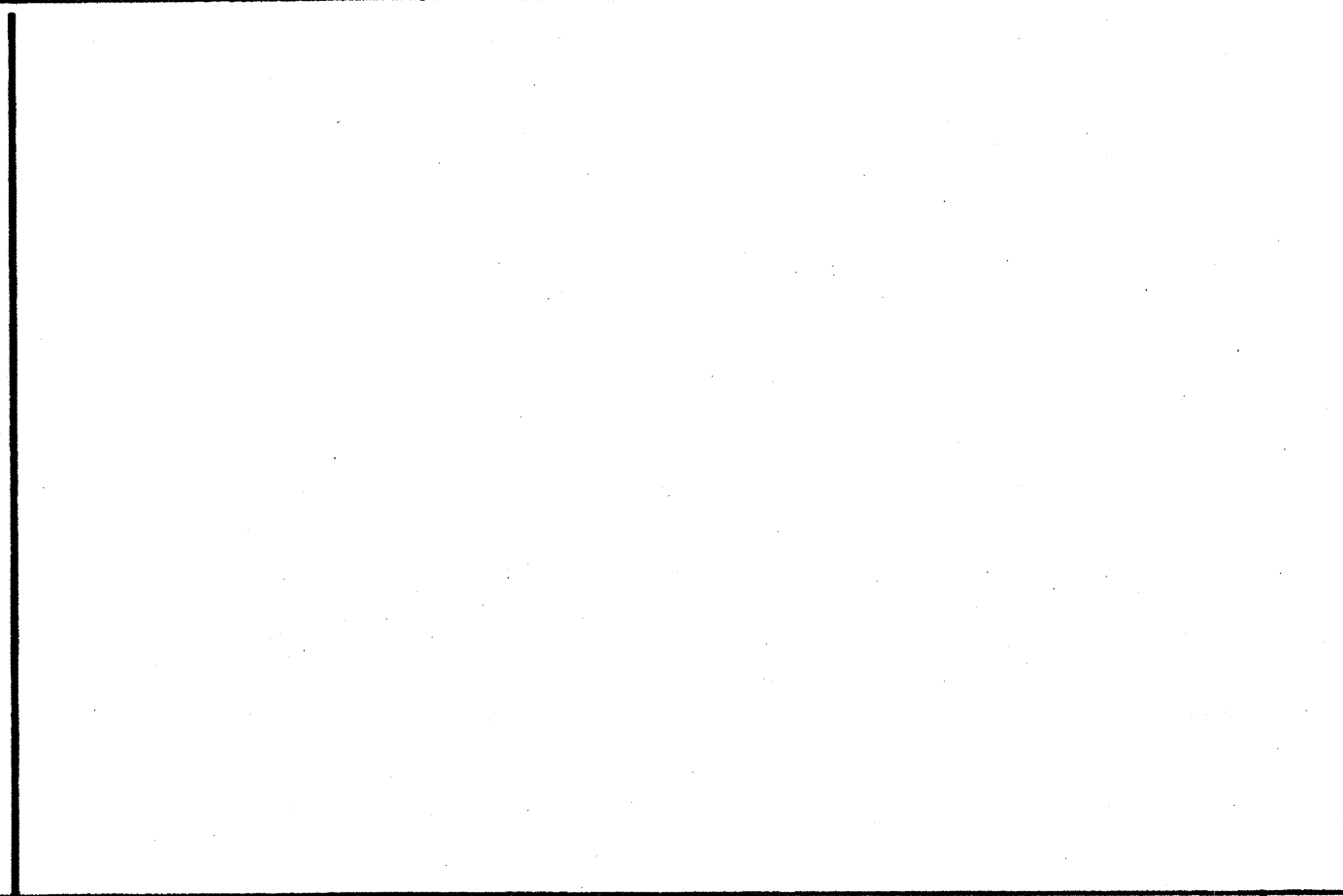
COLUMN SECTION 11



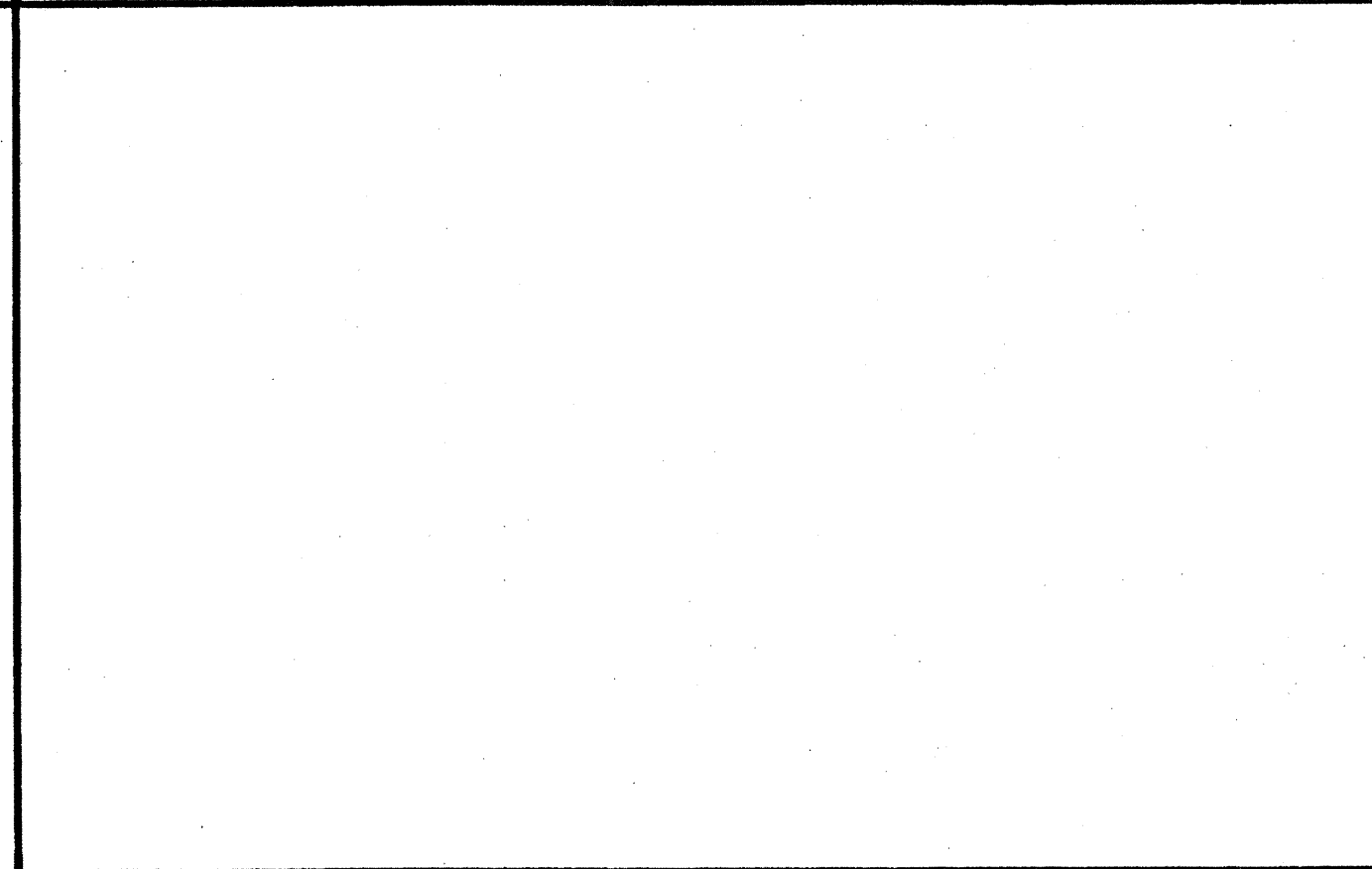
COLUMN CAP PLATE 12



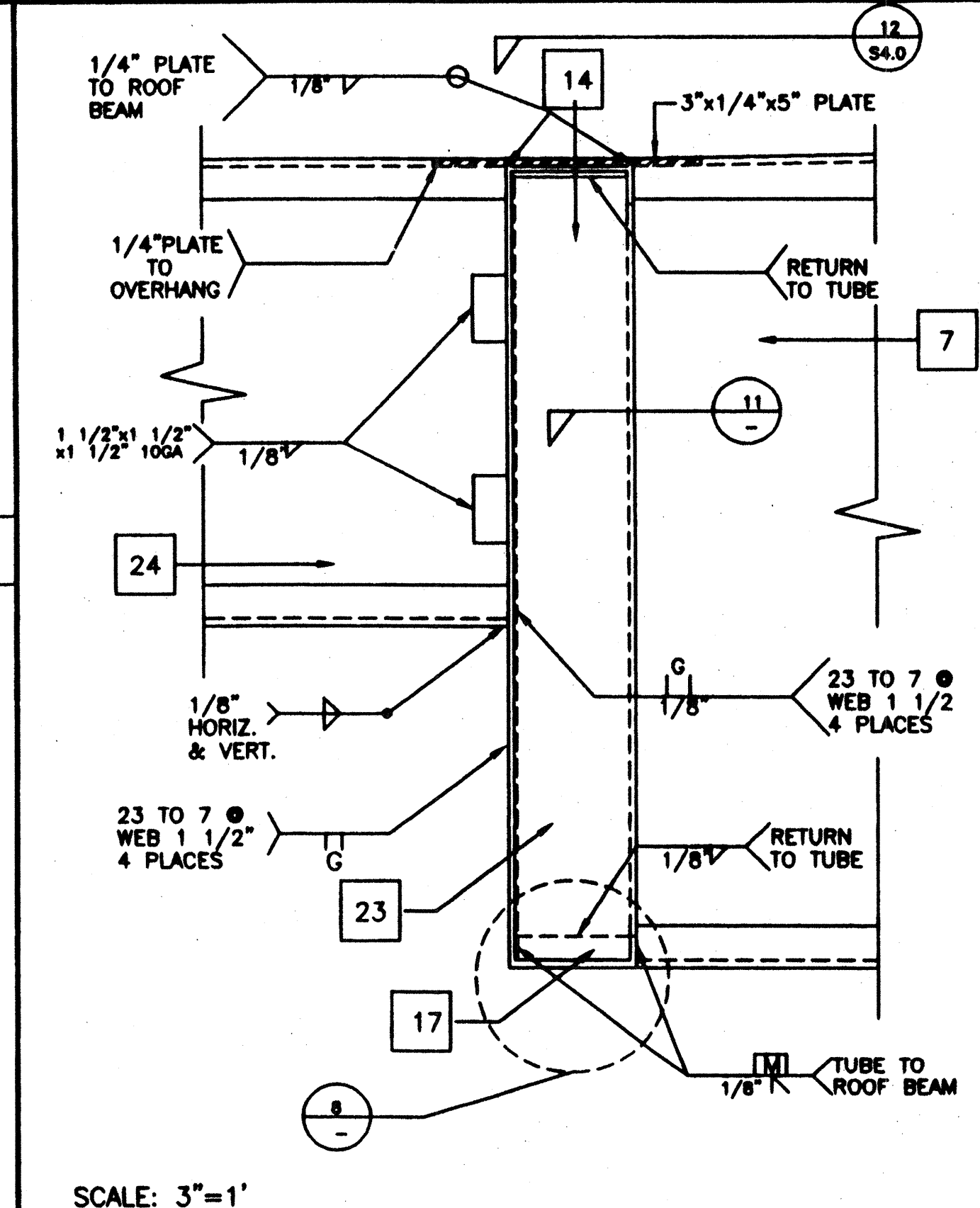
ROOF HEADER AT FRONT OVERHANG MONO PITCH 10



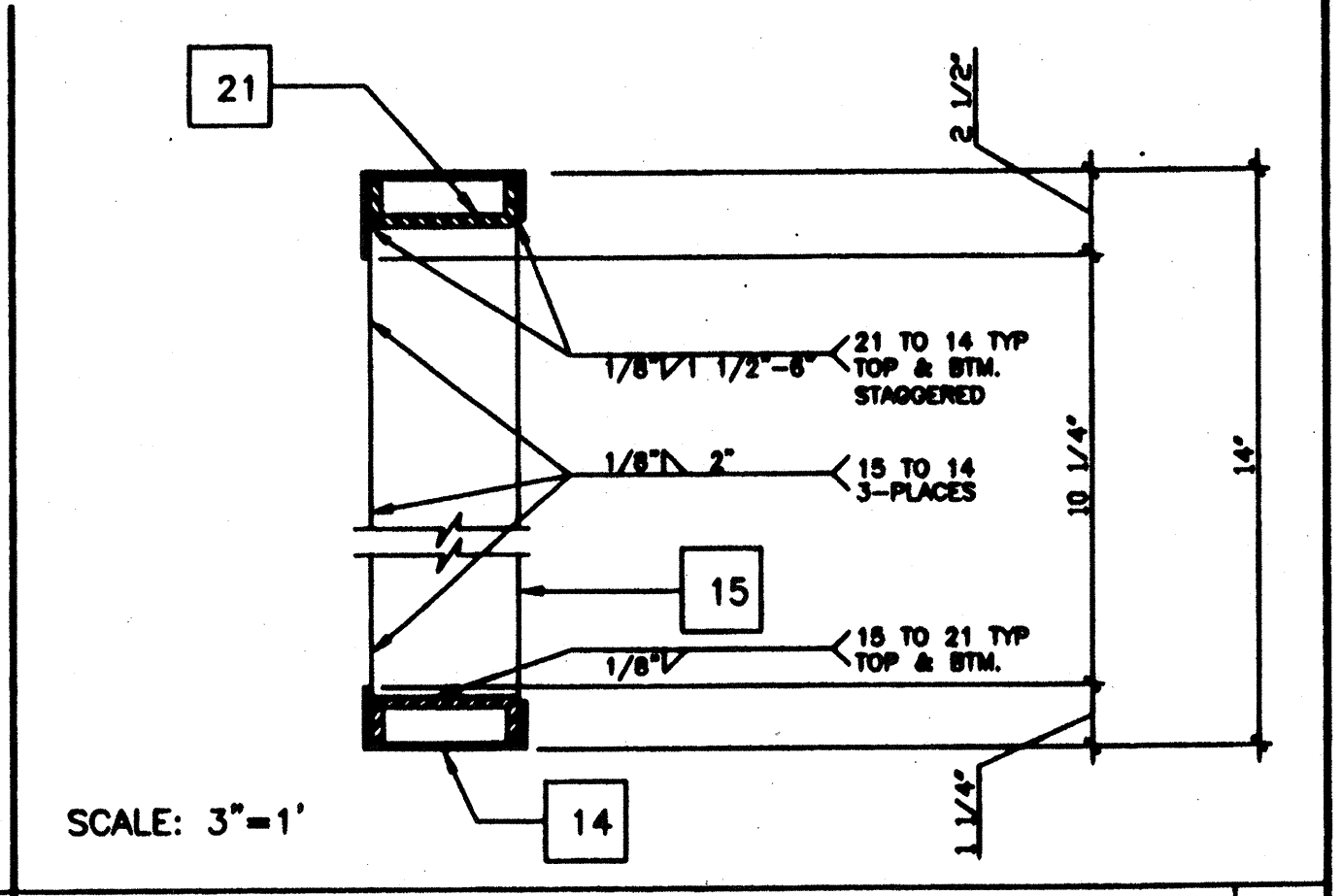
MECH. DUCT OPENING IN HEADER 8



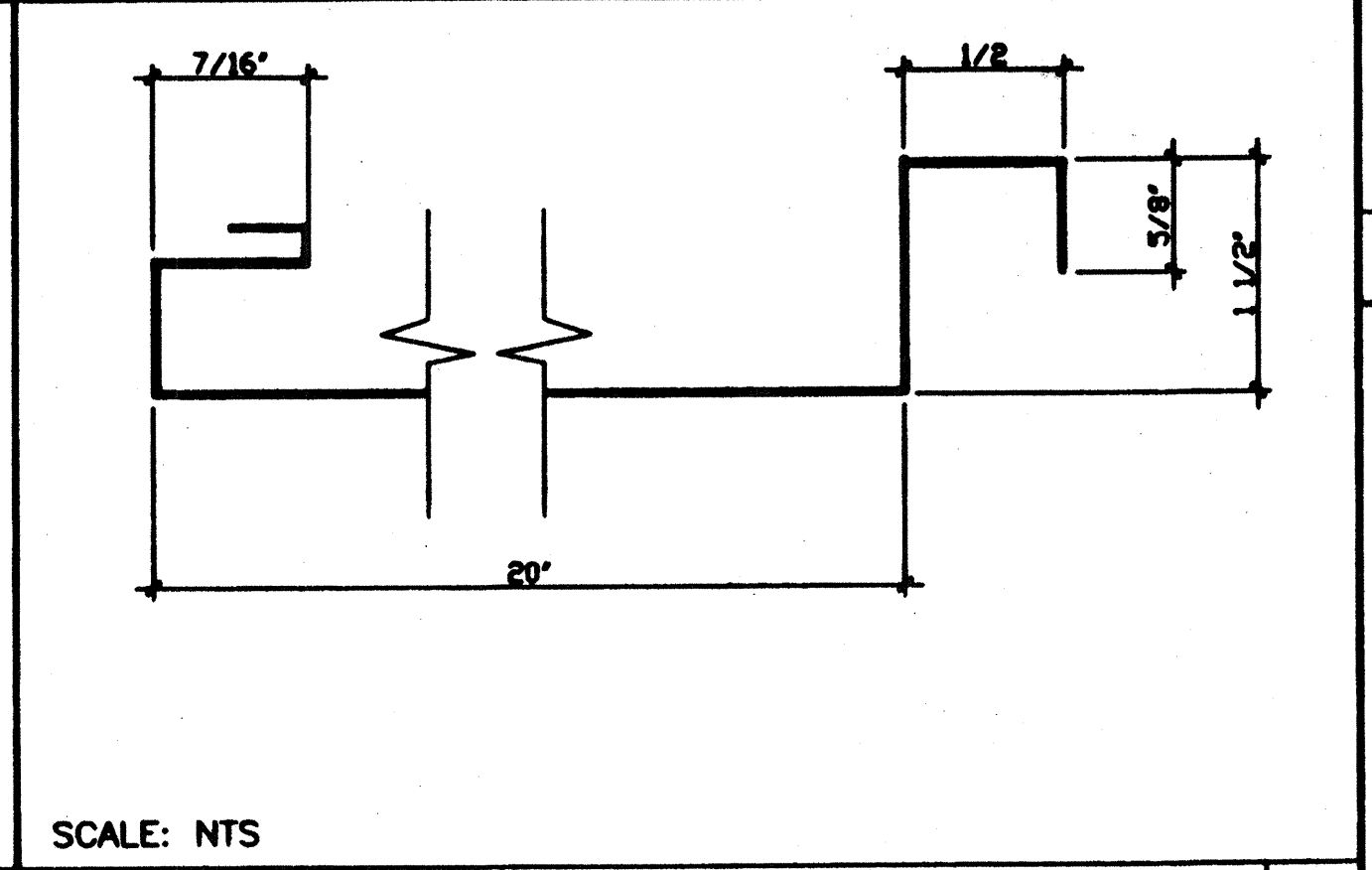
ROOF PAN 9



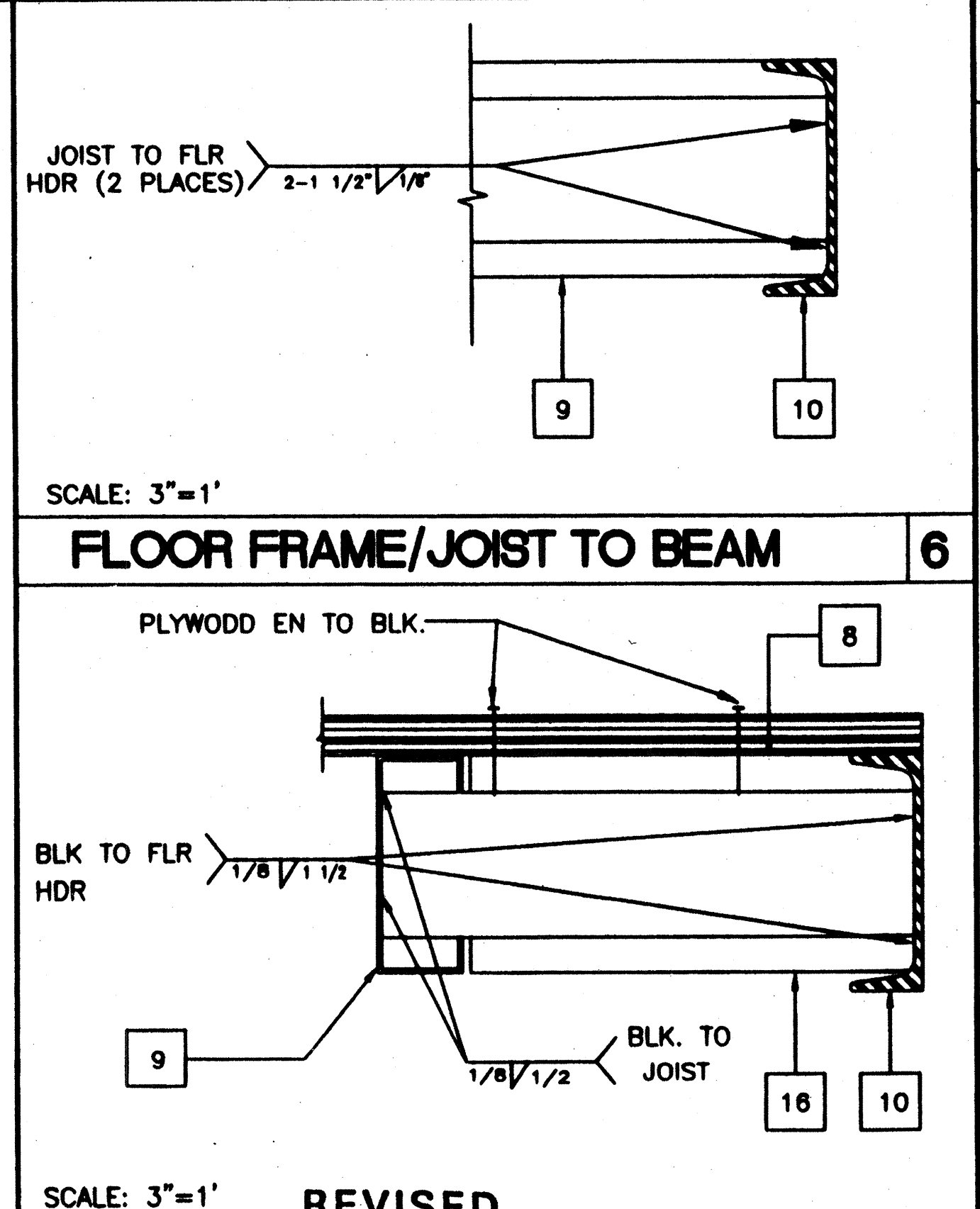
FLOOR FRAME/JOIST TO BEAM 6



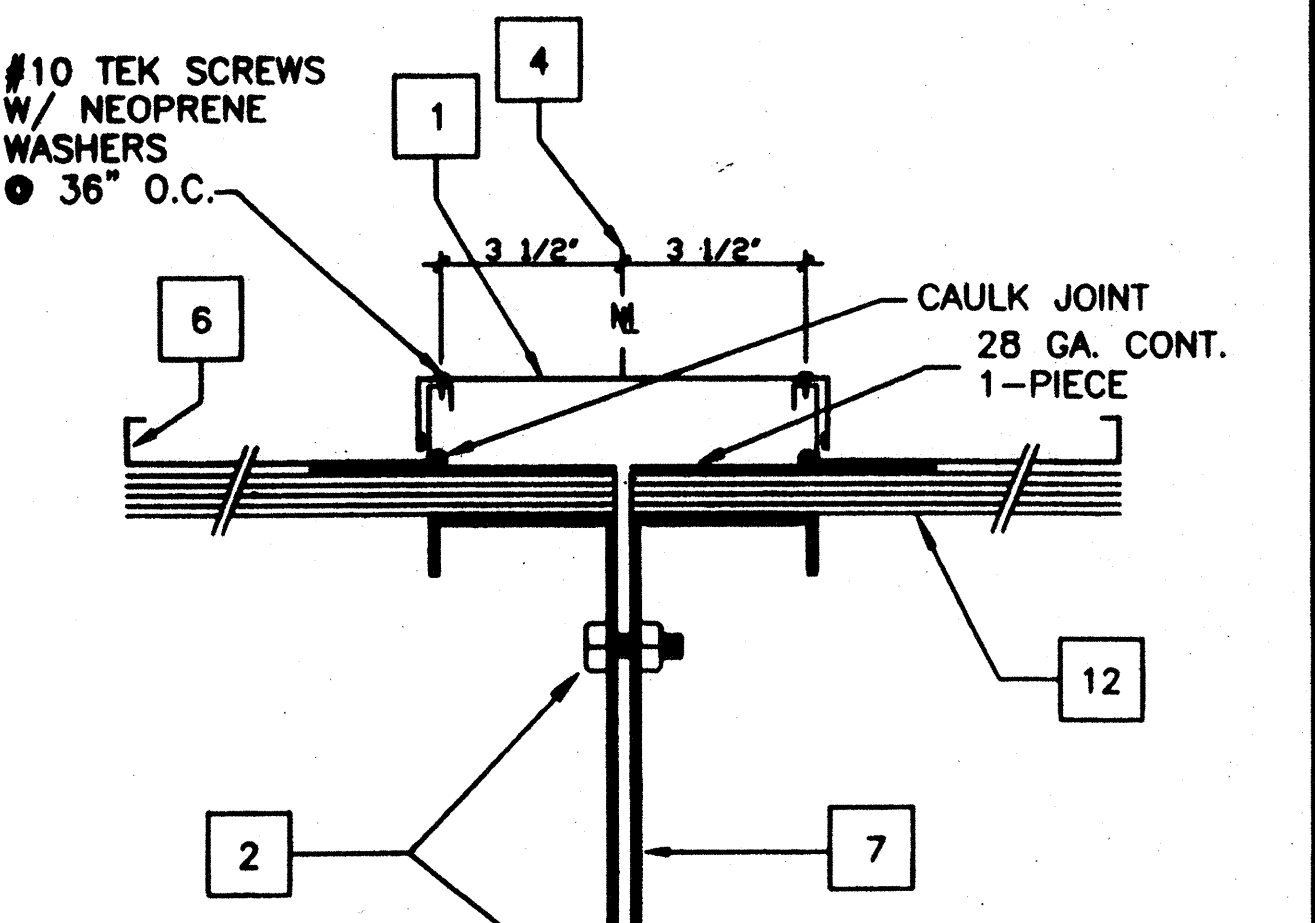
ROOFING AT MODLINE 1



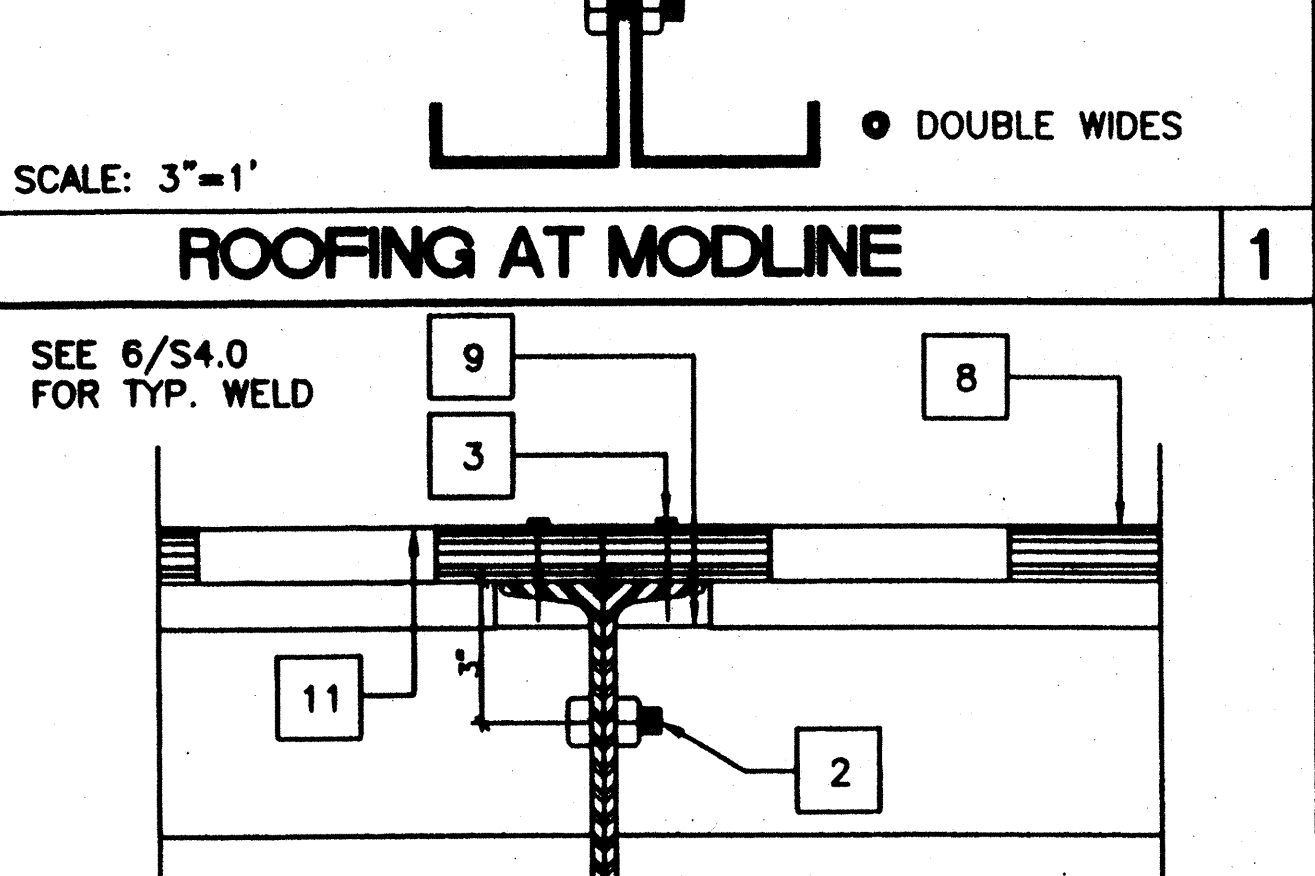
MODULE JOINT AT FLR. 2



ELEVATION-OPENING 3



ROOF HEADER AT MIDSPAN 7



BLOCK AT MIDSPAN 7

- KEY NOTES**
- 1 CAP CLOSURE • RIDGE 26GA. GALV. W/#10 TYPE FASTENERS W/NEOPRENE WASHERS TO RIB BOTH SIDES OF MODLINE. SET CAP IN SEALANT SEE DETAIL-
  - 2 5/8" M.B. A307 MODULE JOINT (SEE STRUCTURAL PLAN FOR LOCATION) • 8" O.C.
  - 3 E.N.
  - 4 MODULE JOINT
  - 5 NOT USED
  - 6 STANDING ROOF SEAM (SEE A2.0)
  - 7 ROOF BEAM (SEE STRUCTURAL) SEE 3/S3.1 & 12/S3.1
  - 8 PLYWOOD FLOOR SHEATHING
  - 9 FLOOR JOIST 6/S3.1
  - 10 FLOOR BEAM (SEE STRUCTURAL 5/S3.1) **C7x9.8**
  - 11 HAND HOLE • BOLT LOCATION
  - 12 PLYWOOD ROOF SHEATHING
  - 13 3 1/2"x3 1/2"x1/4" STEEL TUBE COLUMN
  - 14 ROOF HEADER (SEE STRUCTURAL 1/S3.1)
  - 15 1/4" STIFFENER PLANE SEE 9/S3.1 FOR TYP. WELD
  - 16 "C" BLOCKING SEE 6/S3.1
  - 17 10GA. BACK-UP R.
  - 18 NOT USED
  - 19 NOT USED
  - 20 2"x2"x3/16" L
  - 21 3 1/4"x1"x45 11/16" LX10GA. CHANNEL TOP & BOTTOM CENTER OF OPENING
  - 22 ROOF PURLIN SEE 2/S3.1
  - 23 TUBE STEEL (SEE 11/S3.1) STIFFNER COPE TO FIT ROOF BEAM.
  - 24 ROOF BEAM AT OVERHANG SEE 4/S3.1

**REVISIONS**


Electrical Engineer's Seal  
Mechanical Engineer's Seal  
Structural Engineer's Seal

Architect's Seal  
DIVISION OF THE STATE ARCHITECT  
OFFICE OF REGULATION SERVICES  
**PC-266**  
AC FLS SE  
DATE JUN 25 1997

**MODTECH INC.**  
2830 BARRETT AVENUE  
PERRIS, CALIF. 92572  
PH (909) 943-4014  
FAX (909) 940-0427

PROJECT NUMBER: 2900  
© MODTECH, INC. 1997  
4012-083

drawn by: **2765**  
date: **2852**  
checked by: **2854**  
date: **2900**  
project no: **2900**  
MODTECH Index No.

**STKP-37**  
**S4.0**

FILE # P266 S4.0.DWG PROJECT NO. 2900