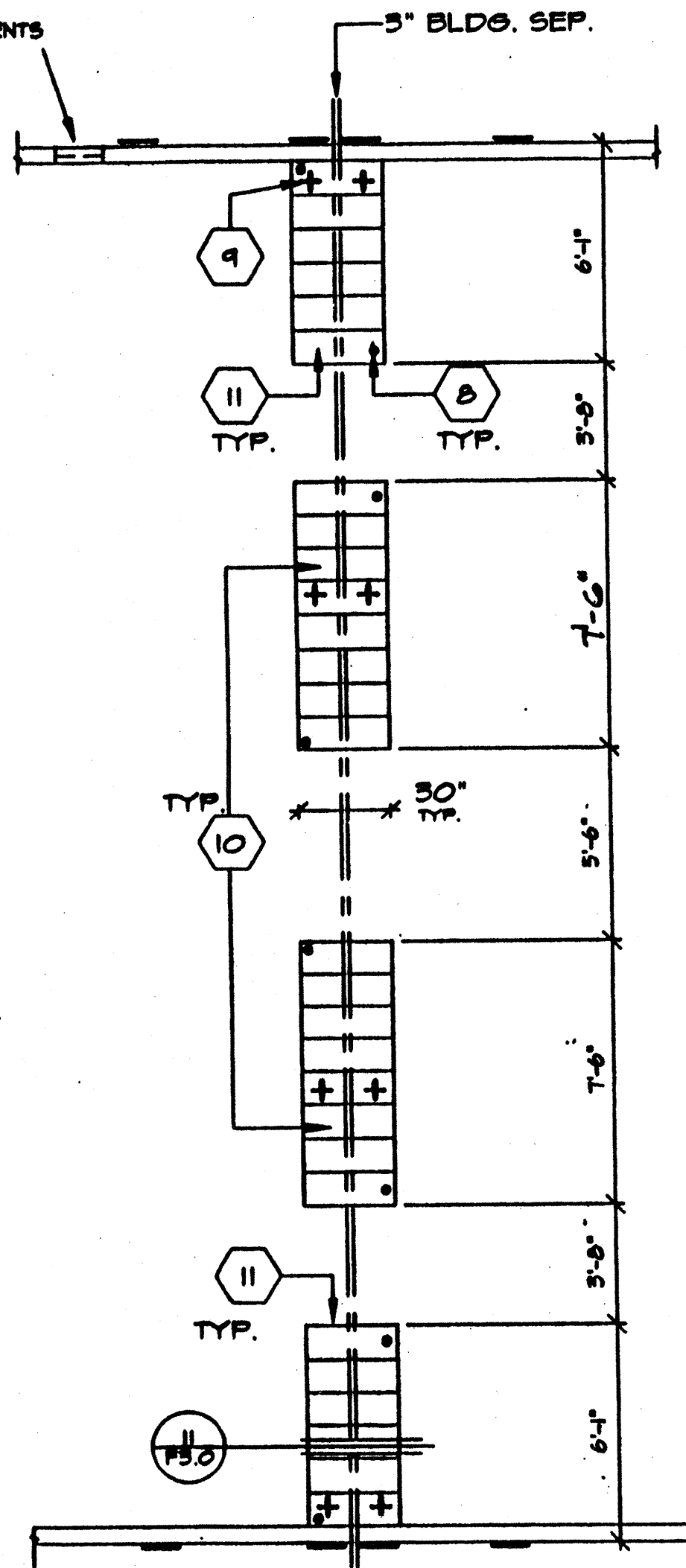


5" X 16" END WALL VENTS
AS REQUIRED FOR ADJACENT
BUILDING APPLICATIONS
MIN. 18" FROM BLDG. CORNERS
MIN. 18" FROM MODLINES
MIN. 12" BLOCKING BETWEEN VENTS

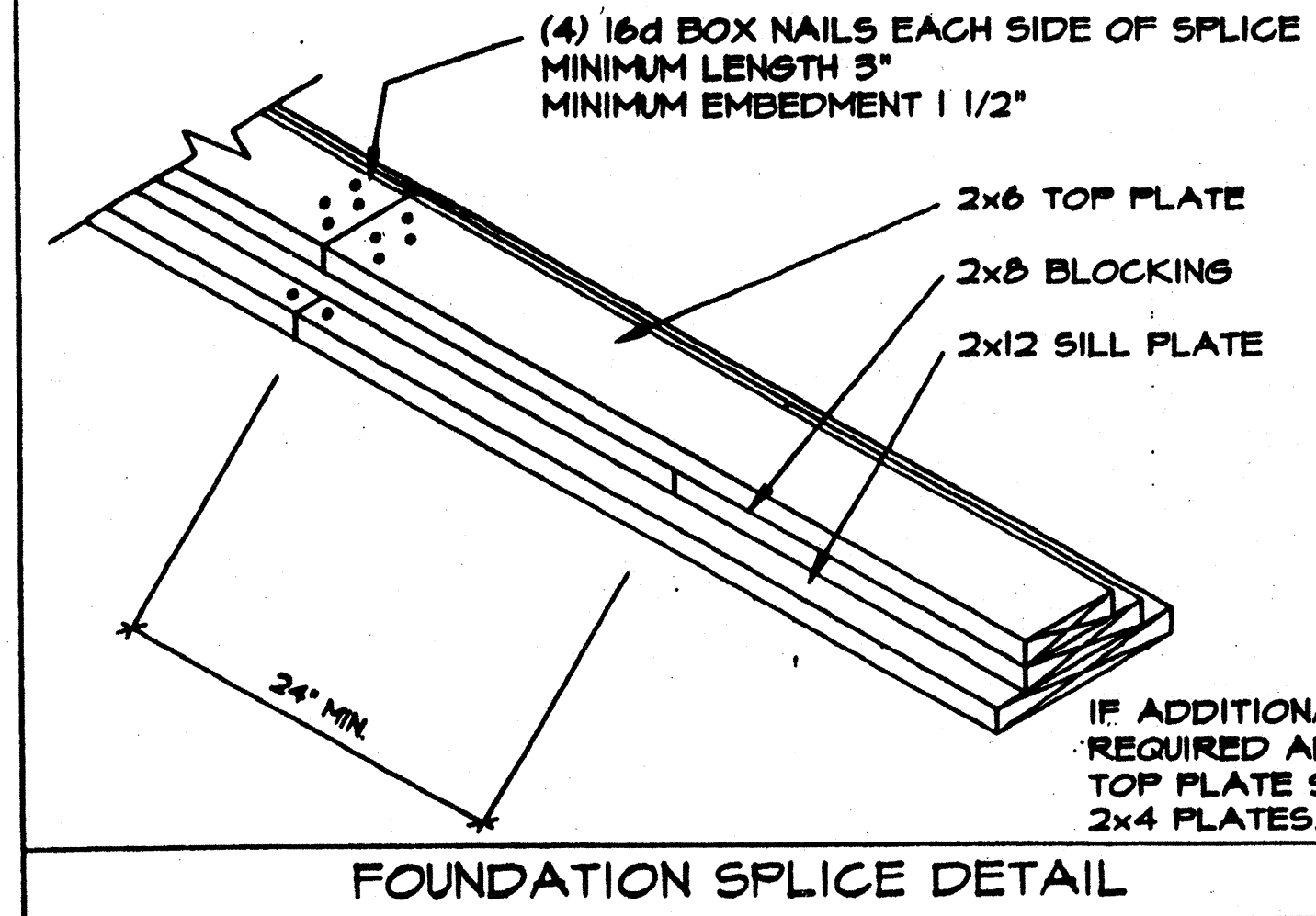
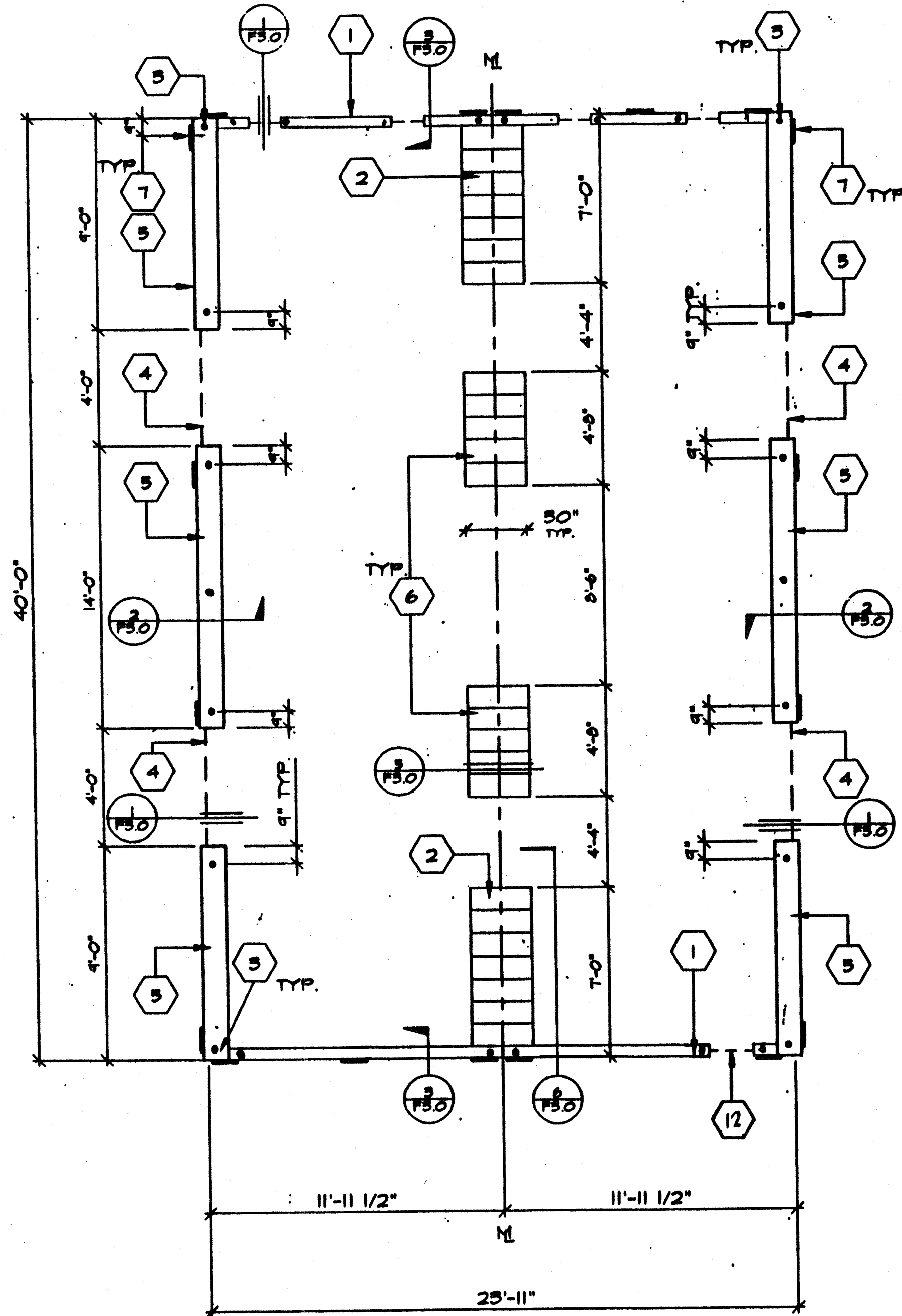


PAD FTG'S AT ADJ. BLDG.

OPTIONAL

"MACHINE APPLIED 16d FASTENERS SHALL HAVE AN EMBEDMENT OF NOT LESS THAN 1 1/2" INTO SECOND MEMBER, AND SHALL BE NOT LESS THAN 5" IN OVERALL LENGTH"

"THE ABOVE NAILS SHALL ALSO BE ACCEPTABLE FOR HAND NAILING, PROVIDED THE REQUIRED EMBEDMENT IS MAINTAINED."



IF ADDITIONAL PLATES ARE REQUIRED ABOVE THE 2x6 TOP PLATE SHOWN, USE 2x4 PLATES.

FOUNDATION SPLICE DETAIL

KEYNOTES

- 1 2"x6" SILL PLATE (ENDWALL)
- 2 7 - 2X12X30" LONG SILL PADS
- 3 PIPE TO GRADE (TYP.)
- 4 3" HIGH BY 4'-0" LONG VENT - SIDEWALL
3" HIGH BY 2'-0" LONG VENT - ENDWALL
- 5 2X12 SILL PLATE (SIDE WALL)
- 6 5-2X12X30" LONG SILL PADS
- 7 6"x12"x10 GA. PLATES
- 8 1" Ø PIPE EA. END EA. PAD AT ADJ. BLDG. LINE
- 9 5/8" Ø X4' LAGS (4-PER BLDG. MIN.)
- 10 8 - 2X12X30" LONG SILL PADS
- 11 6 - 2X12X30" LONG SILL PADS
- 12 THIS VENT TO BE LOCATED UNDER LANDING. PROVIDE EQUAL AREA SCREENED VENTS LANDING SKIN

NOTES

- 1. SILL RESTRAINT: ON A.C. PAVING AND ON SOIL 1" O.D. GALVANIZED PIPE AT 10'-0" 12" PENETRATION BELOW SURFACE VERTICALLY. DRILL SILL 1-1/4" MAX. PIPE MAY BE DRIVEN MAX. OF 45° ANGLE TO VERTICAL. (18-1/2" LONG PIPE REQUIRED FOR PENETRATION AT 45° ANGLE.)
- 2. ON CONCRETE PAVING HILTI DS 82-PI0 THRU SILL PLATE.
END WALLS: 8" O.C.
SIDE WALLS: 22" O.C.
- 3. WHERE SHIM STOCK IS REQUIRED FOR LEVELING USE 1/4", 1/2", OR 3/4" THICK PLYWOOD SAME WIDTH AS BLOCK. P.T.
- 4. VERIFY DRAINAGE TO PREVENT WATER FROM PONDING BENEATH THE STRUCTURE, WITH DISTRICT ARCHITECT SITE PLANS
- 5. ALL FOUNDATION MATERIAL SHALL BE HEM FIR
GROUND CONTACT: LP-22 (CCA 40)
ABOVE GROUND: LP-2 (CCA 25)
- 6. FOUNDATION DESIGNED FOR 1000 PS SOIL BEARING PRESSURE PER ORS IR 23-6.

IDENTIFICATION STAMP
DIV. OF THE STATE ARCHITECT
APPROX 1 1 5 3 0 0
AC / FLS / SS
DATE JAN 18 2014

VENT CALCS.	
BLDG SIZE 24' X 40' = 960 sq	
VENTILATION REQ'D 960/150 = 6.4 sq	
5" X 4' 0" VENT = 1.0 sq	
4 VENT 5 X 1.0 sq = 4 sq VENTING PROVIDED	
5" X 2' 0" VENT = 0.5 sq	
5 VENT 5 X 0.5 sq = 2.5 sq VENTING PROVIDED	
6.5 sq	6.4 sq

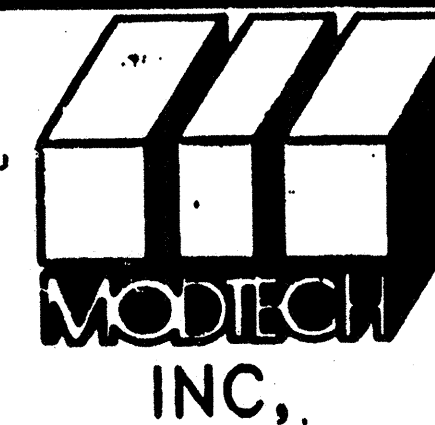
FOUNDATION (WOOD SILL)

24 x 40 - 50 + 20 PSF LL

SCALE 1/4"=1'-0"

STKP-37

REVISIONS	ELECTRICAL	MECHANICAL	STRUCTURAL	ARCHITECT	DIVISION OF THE STATE ARCHITECT
▲					
▲					
▲					
▲					
▲					
▲					



MODTECH INC.
2830 BARRETT AVE.
FERRIS, CA. 92512
PH. (909) 945-4014
FX. (909) 940-0421

JOB NO. 4012-083
2900

IDENTIFICATION STAMP
DIV. OF THE STATE ARCHITECT
OFFICE OF REGULATION SERVICES
04 100596
AC FLS SS
DATE AUG 10 1998

2765
2852
2854
2890
2818

DRAWN BY RN
DATE
CHECKED BY
DATE 8/96

CONFIDENTIAL - THIS DOCUMENT AND THE INFORMATION CONTAINED HEREIN ARE THE PROPERTY OF MODTECH INC. UNAUTHORIZED COPYING, DISCLOSURE, OR OTHER UNAUTHORIZED USES ARE PROHIBITED

FOUNDATION PLAN

FO.2