

**KEY NOTES**

- 1 TYPICAL EXTERIOR SIDING (SEE FINISH SCHED.)
- 2 EXTERIOR LIGHT FIXTURE (SEE SPECIFICATIONS)
- 3 TOP OF SKIRTING
- 4 RAMP AND LANDING SEE SHT. R-1
- 5 HVAC UNIT (HV)
- 6 DOWNSPOUT (TYP.) FOR (2), FASTEN TO BLDG. TYP. 3 PLACES (SEE 8/A6.1)
- 7 CONTINUOUS GUTTER WITH DOWNSPOUT (LOCATION OF DOWNSPOUT SHOWN ON ROOF PLAN)
- 8 SPLASH BLOCK (BY OTHERS)
- 9 FINISH FLOOR LINE
- 10 BOTTOM FLANGE OF FLOOR BEAM
- 11 ROOF HEADER
- 12 TOP OF COLUMN
- 13 FINISH GRADE
- 14 ROOF BEAM (STR)
- 15 COLUMN (STR)
- 16 ELECTRICAL STUB-OUT (EL)
- 17 GROUND STUB-OUT (EL)
- 18 FIRE ALARM HORN (EL)
- 19 NEMA GUTTER BOX (EL)
- 20 RIDGE
- 21 FOUNDATION VENT (SEE FOUNDATION PLAN)

**NOTES**

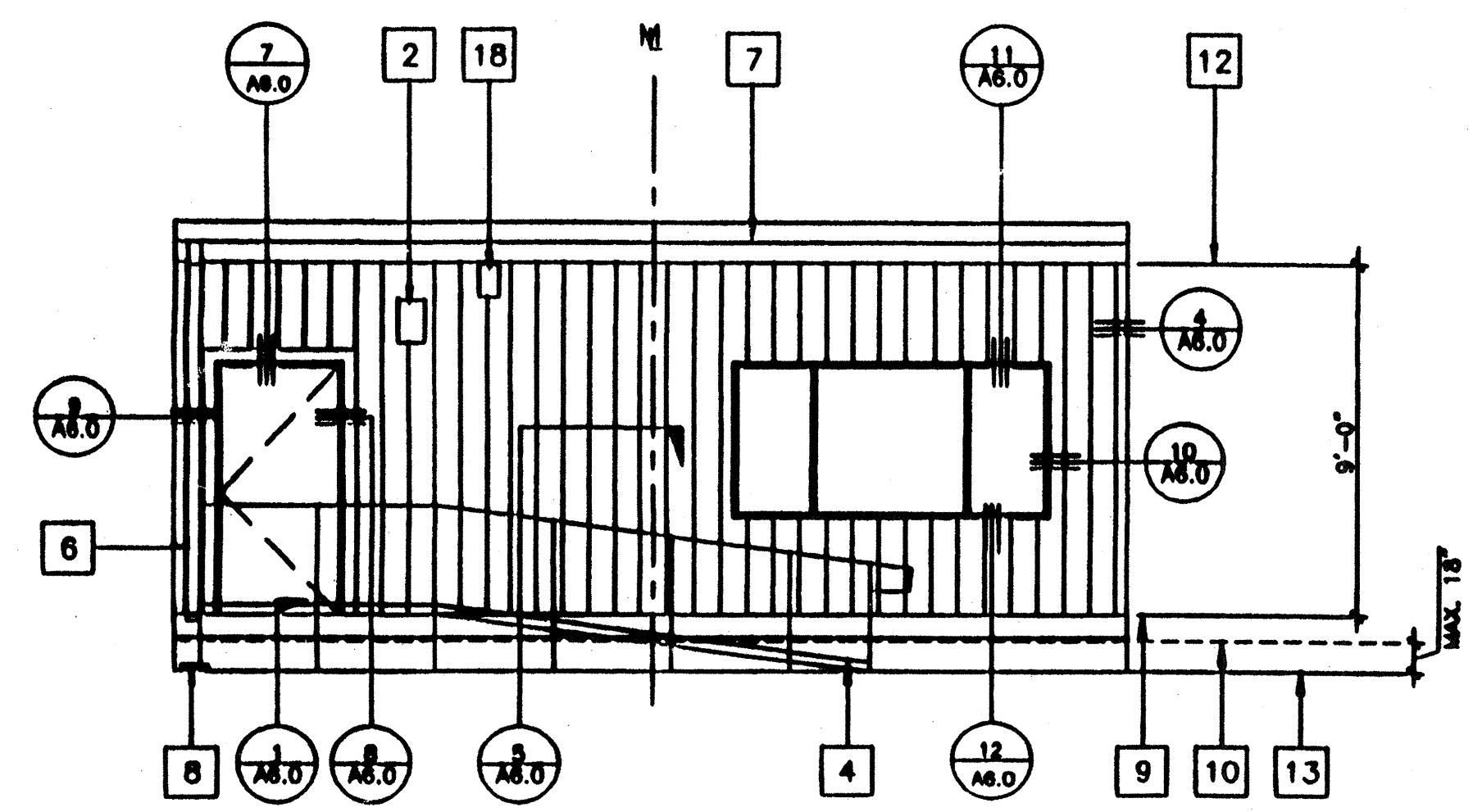
IDENTIFICATION STAMP  
DIV. OF THE STATE ARCHITECT  
OFFICE OF REGULATION SERVICES

O4 100596  
AC ME FLR TC SS ED  
DATE AUG 10 1998

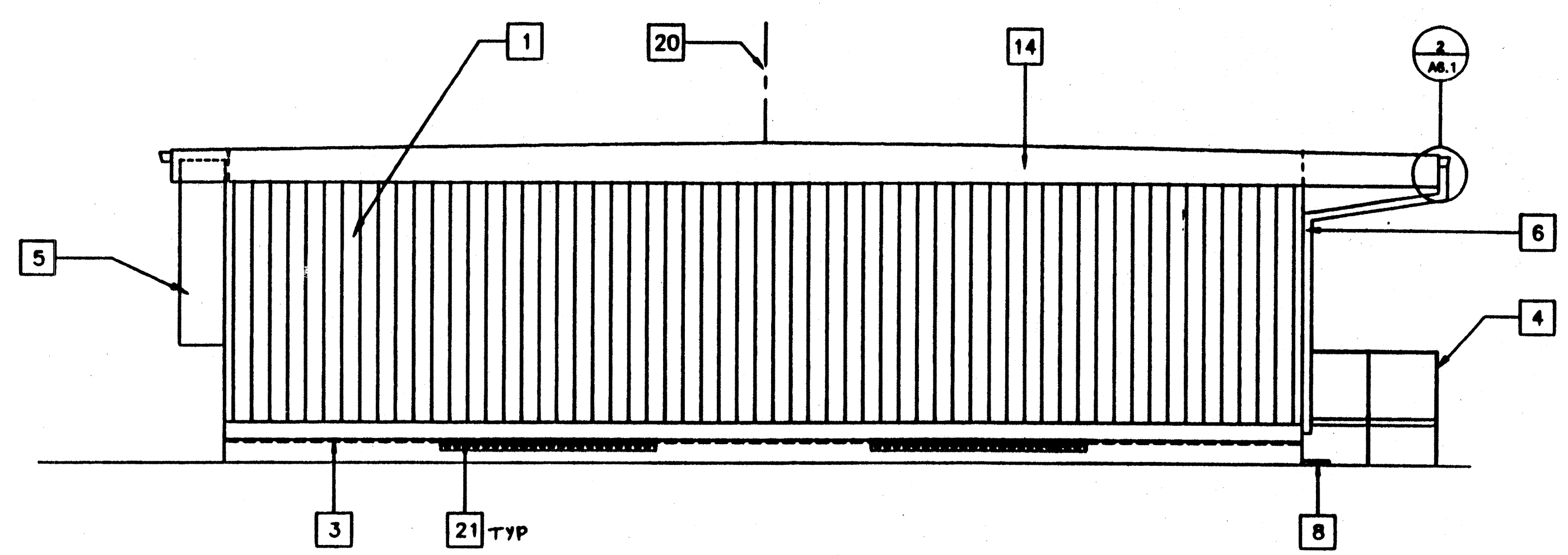
APPROX 115885  
AC ME FLR TC SS ED  
DATE JAN 08 2014

**STKP-37D**

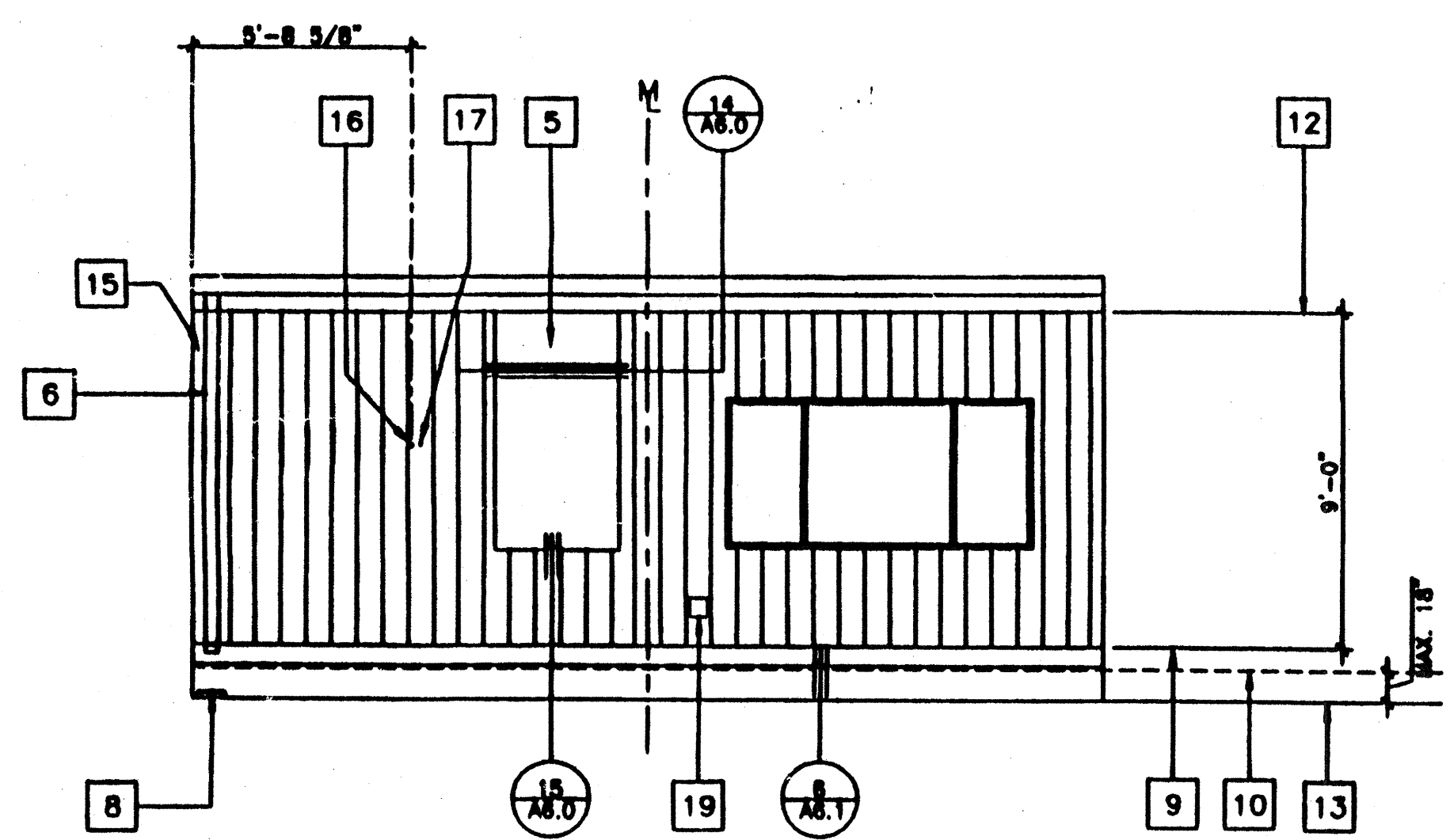
4/10/98



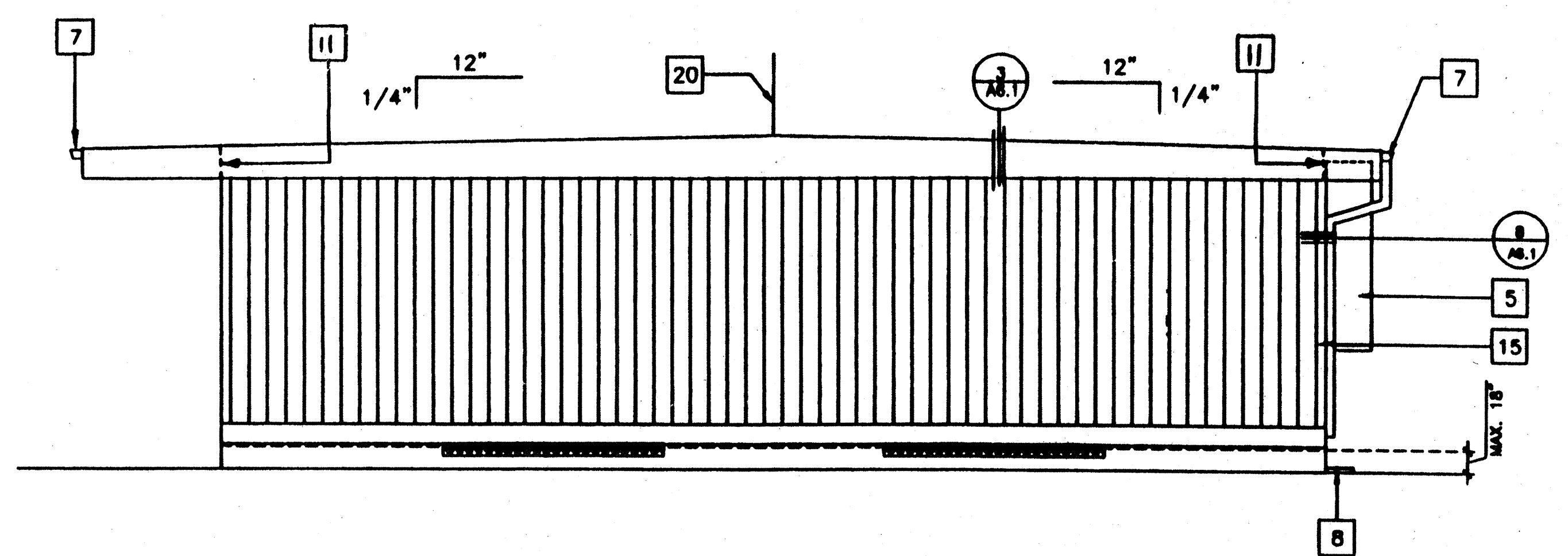
**1 FRONT ELEVATION**  
SCALE 1/4"=1'-0"



**2 LEFT SIDE ELEVATION**  
SCALE 1/4"=1'-0"



**3 REAR ELEVATION**  
SCALE 1/4"=1'-0"



**4 RIGHT SIDE ELEVATION**  
SCALE 1/4"=1'-0"

**24' X 40' (DUAL SLOPE)**

REVISIONS	Electrical Engineer's Seal	Mechanical Engineer's Seal	Structural Engineer's Seal	Architect's Seal	Division of the State Architect	PROJECT NUMBER	© MODTECH, INC. 1997 4012-083	drawn by: date: checked by: date: Modtech project no: MODTECH logo No.

**REVISED**

**MODTECH INC.**  
2830 BARRETT AVENUE  
PERRIS, CALIF. 92572  
PH (909) 943-4014  
FAX (909) 940-0427

**EXTERIOR ELEVATIONS**

drawn by: 2852  
date: 2854  
checked by:  
date:  
Modtech  
project no:  
MODTECH logo No.

**A3.0**