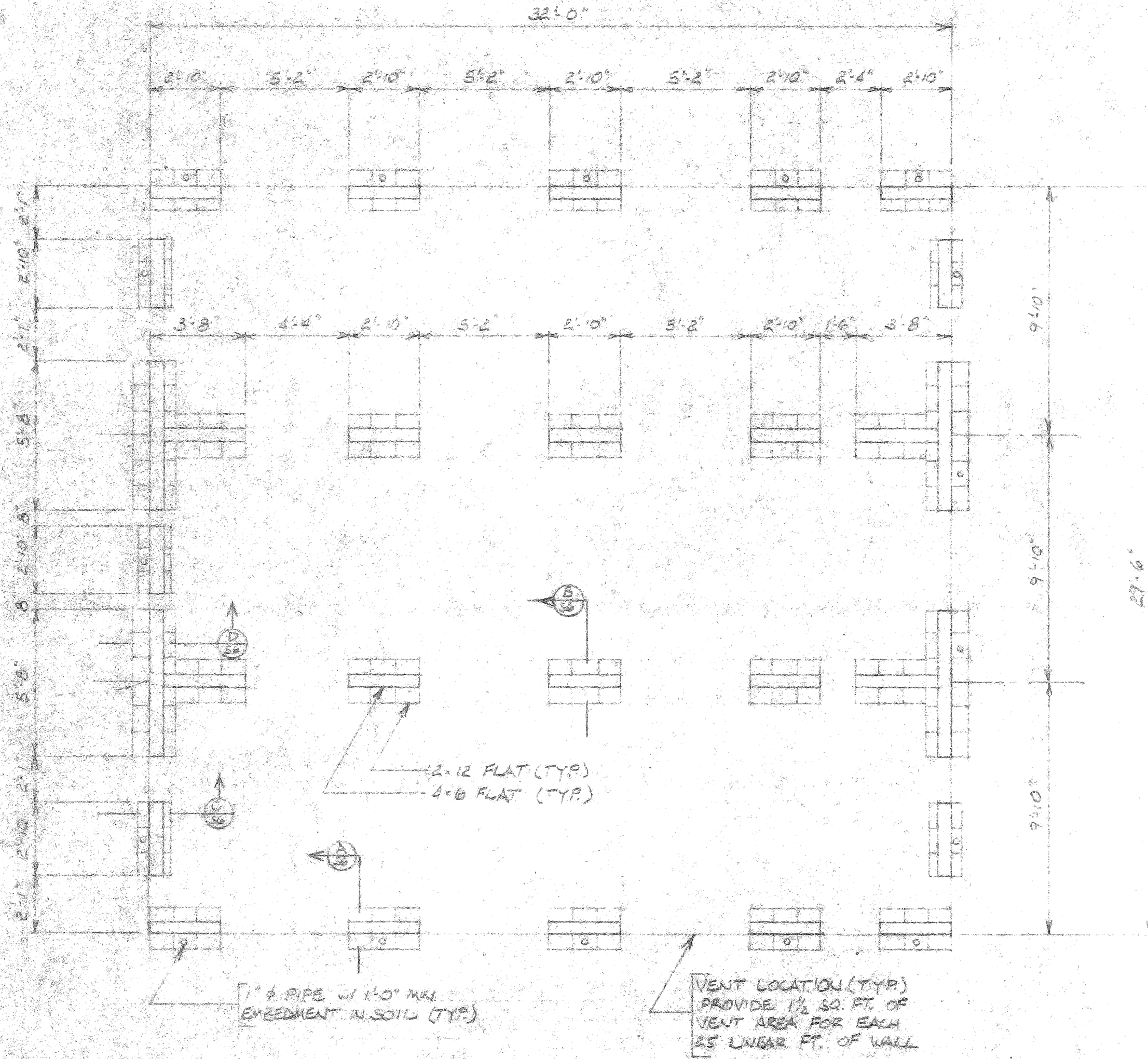
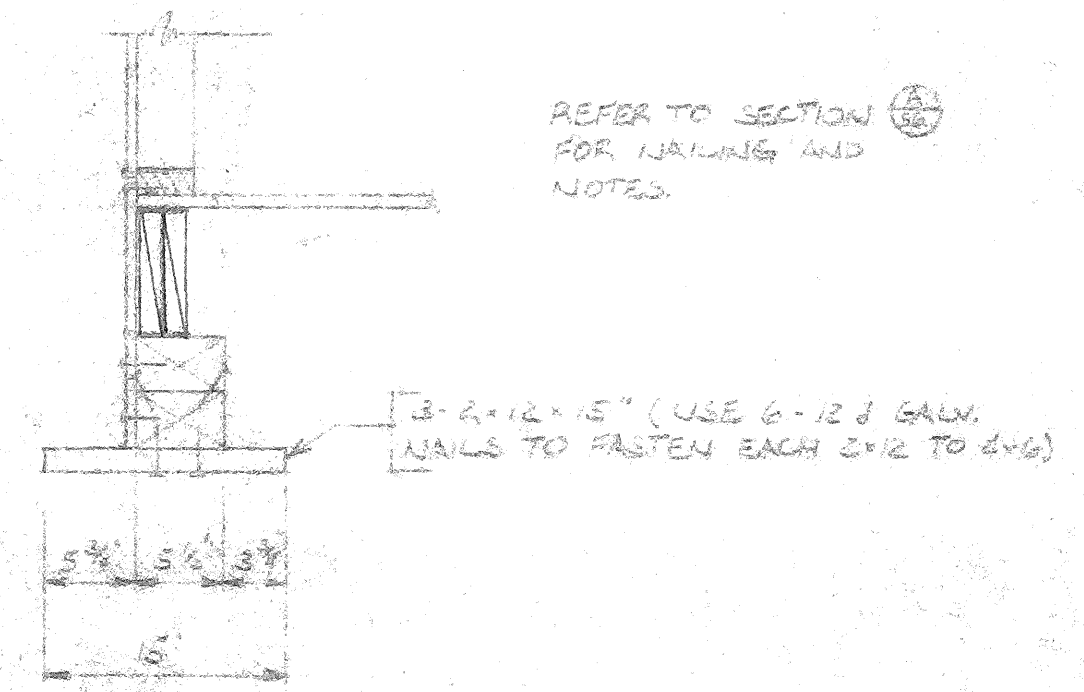


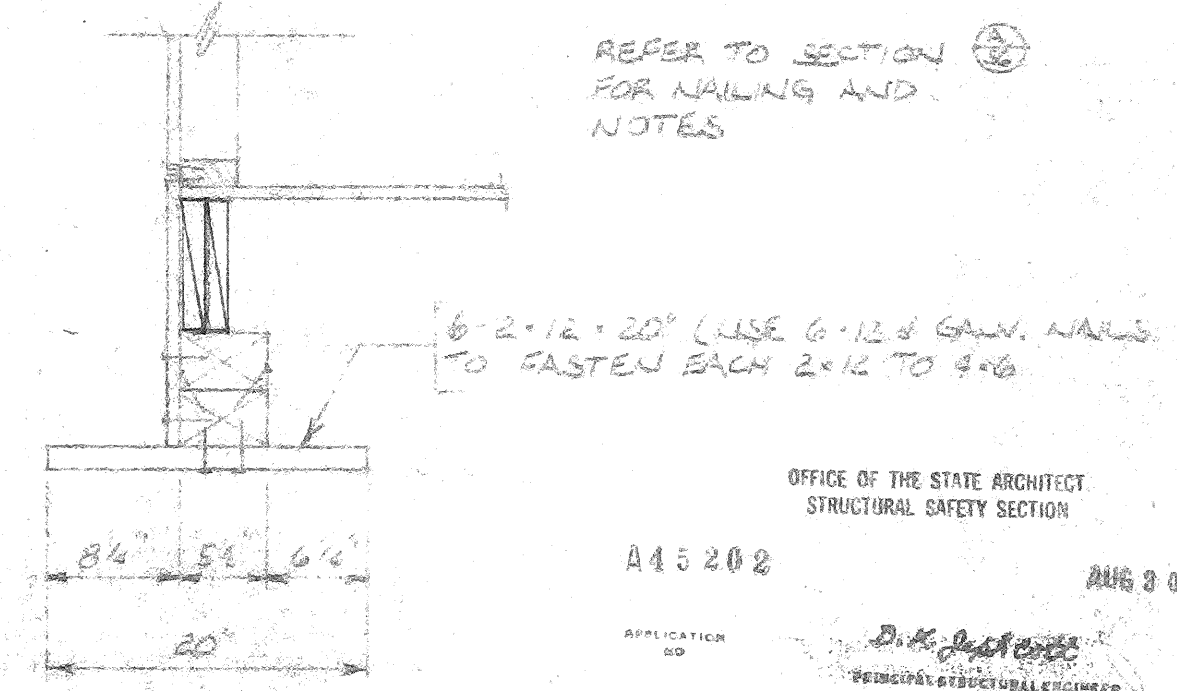
BILL OF MATERIALS				
MARK	QTY.	SIZE OR MODEL NO.	DESCRIPTION	REMARKS



FOUNDATION PLAN 1/8" = 1'-0"



ENDWALL FOOTING - SECTION C 1/8" = 1'-0"



COLUMN FOOTING - SECTION D 1/8" = 1'-0"

REFER TO SECTION FOR NAILING AND NOTES

OFFICE OF THE STATE ARCHITECT
STRUCTURAL SAFETY SECTION

A15202

AUG 30 1983

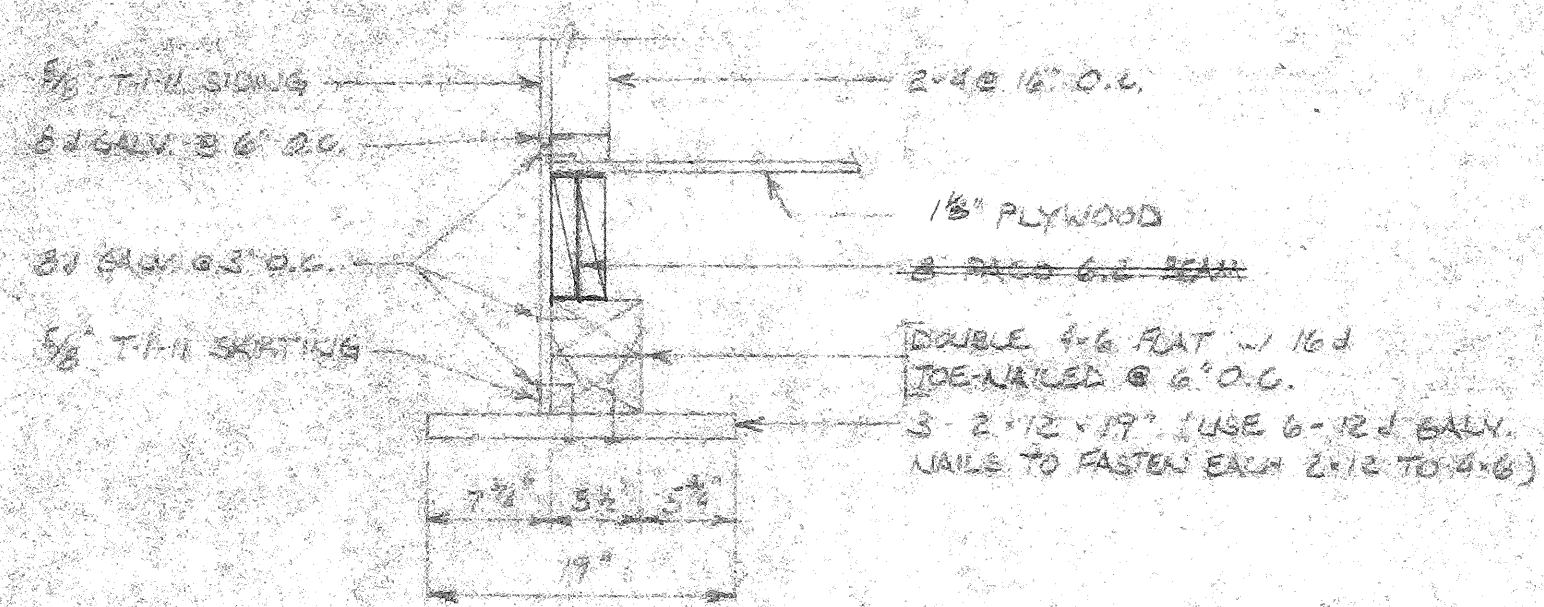
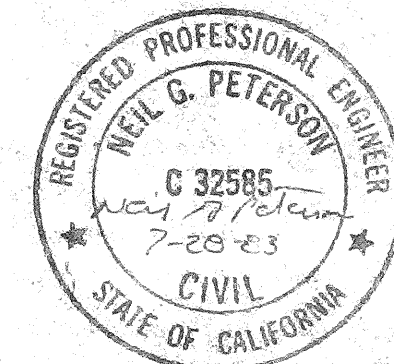
APPLICATION NO. *D.K. Johnson*
PRINCIPAL STRUCTURAL ENGINEER

NOTE - ALL 2x12'S PRESSURE TREATED D.F. #3
- ALL 4x6'S SHALL BE PRESSURE TREATED OR FOUNDATION GRADE REDWOOD

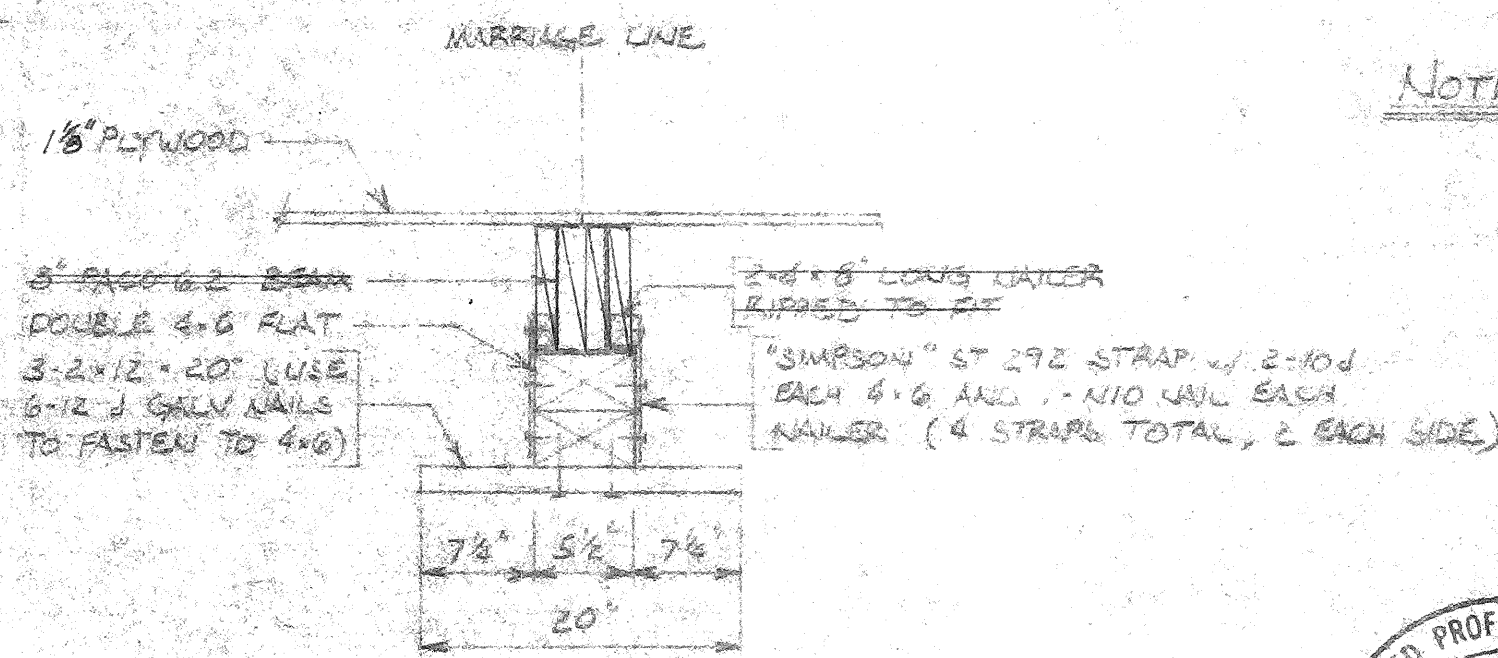
'CLASS ROOM'

Leonard J. Schrock R.E.A. C-3680

Date	By	No.	Date	By	No.
REVISIONS					
Project - BAKERSFIELD CITY SCHOOL DIST.					
Title - FOUNDATION PLAN				Dwg. No.	
SCALE - NOTED	DATE - 6/30/83	DRN. BY - J.M.S.	CRD. BY	Series	
TELUS CORPORATION				Job No. 5-5	
1840 FRENCH ROAD SACRAMENTO, CA.		PLANT		Sht. of	
CALIF., CA.	SACRAMENTO, CA.	SALERS, ORG.	BOISE, IDAHO	Sht. of	



SIDEWALL FOOTING - SECTION A 1/8" = 1'-0"



MARRIAGE LINE FOOTING - SECTION B 1/8" = 1'-0"