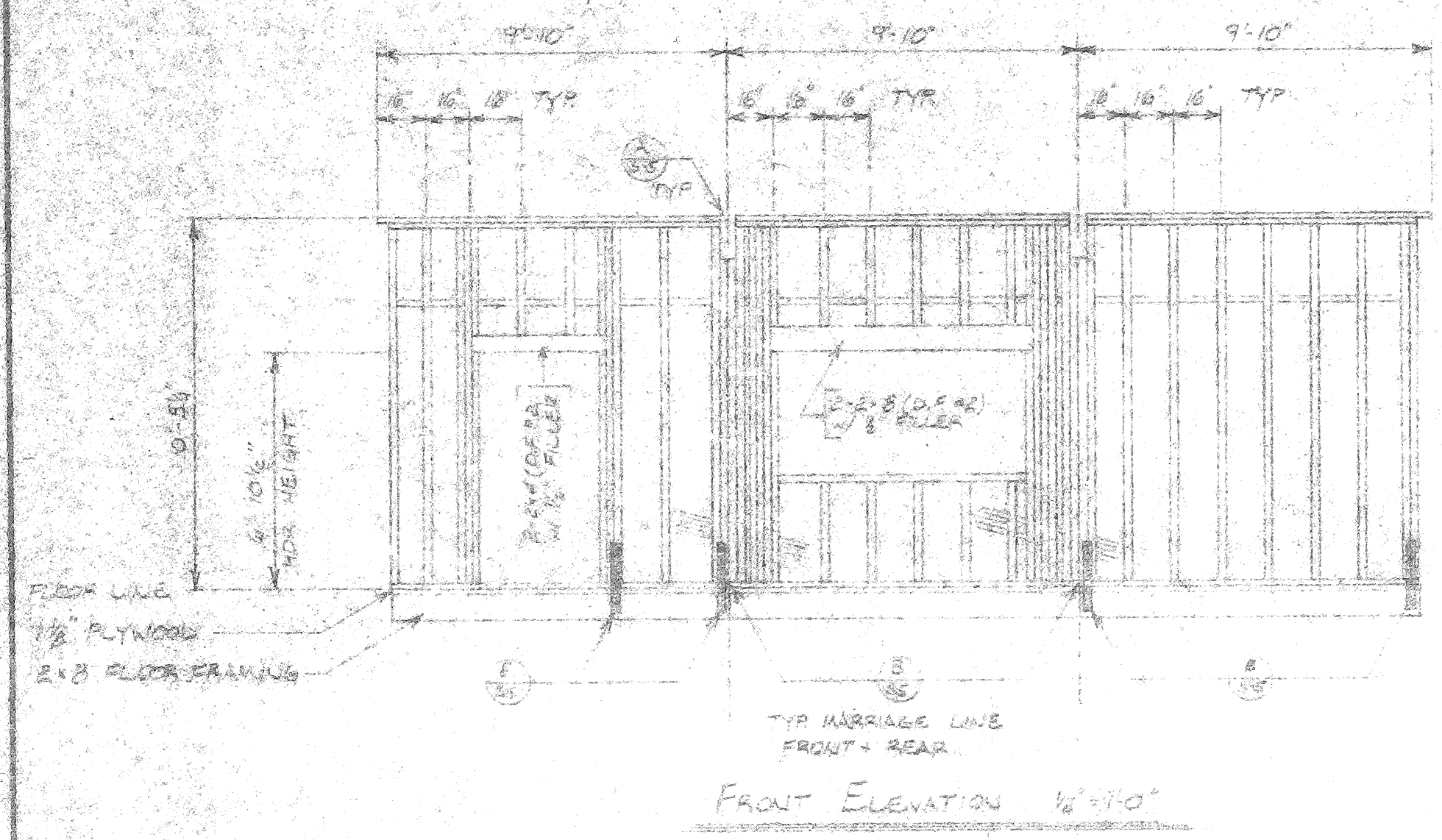
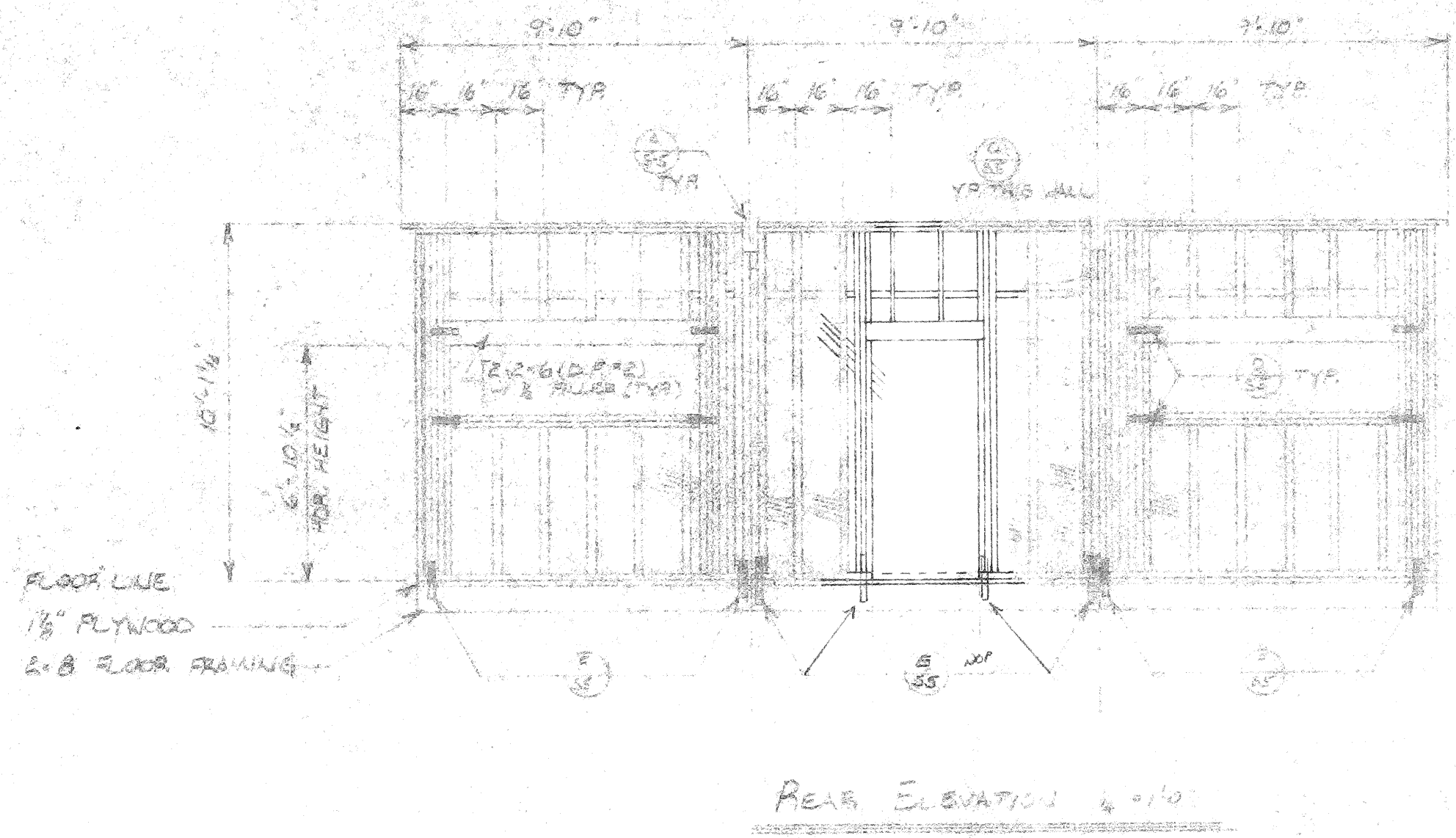


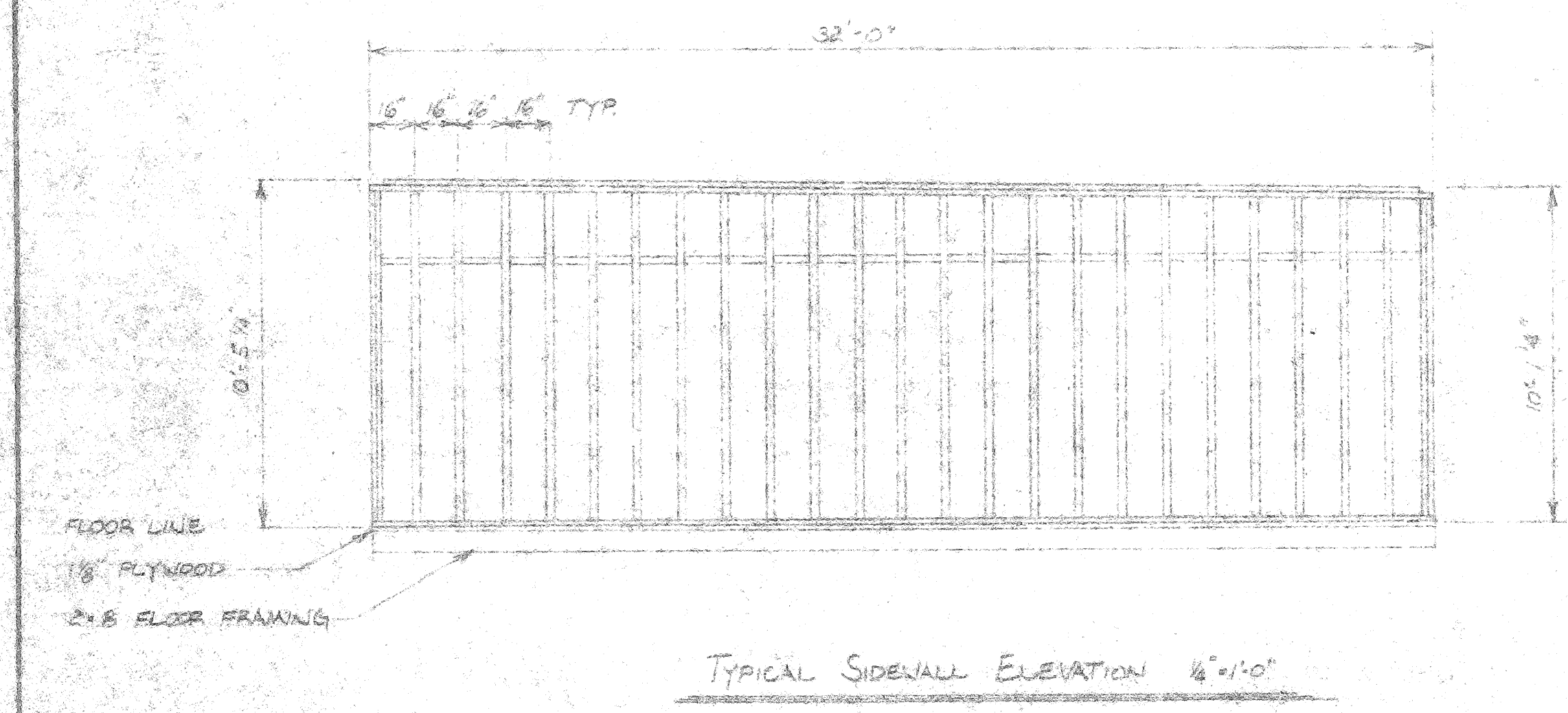
BILL OF MATERIALS				
MARK	QTY	SIZE OR MODEL NO.	DESCRIPTION	REMARKS



FRONT ELEVATION 27'-0"



REAR ELEVATION 27'-0"



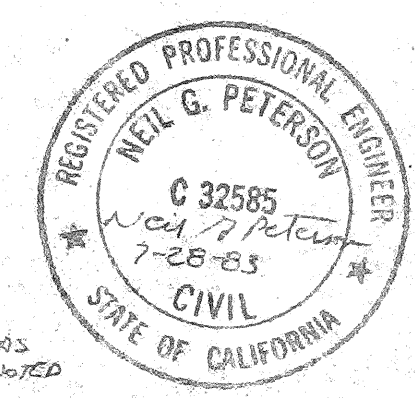
TYPICAL SIDEWALL ELEVATION 32'-0"

NAILING NOTES

1. WALL FRAMING IS 2x6 @ 16" O.C. OR "SPLED" OR BETTER. FASTEN STUD TO TOP AND BOTTOM PLATES W/ 8-16d NAILS EACH END.
2. FASTEN DOUBLE TOP PLATES TOGETHER W/ 16d @ 16" O.C. AT TOP PLATE SPLICE USE 2-16 EACH SIDE OF SPLICE (MIN. 2'-0" SPLICE LAP.)
3. FASTEN BOTTOM PLATE TO FLOOR W/ 16d @ 10" O.C.
4. FASTEN ENDWALL TO SIDEWALL W/ 16d @ 6" O.C.
5. WINDOW FRAMING - USE 3 FULL HEIGHT STUDS W/ 1 TRIMMER EACH SIDE OF WINDOW FRAME. FASTEN MULTIPLE STUDS TOGETHER W/ 12d @ 10" O.C. FASTEN HEADER TOGETHER W/ 12d @ 8" O.C. STAGGERED. FASTEN HEADER TO FULL HEIGHT STUD W/ 6-16d EACH END (3 NAILS EACH 2x4). FASTEN SILL PLATE TO TRIMMER STUDS W/ 3-16d NAILS EACH END. NAIL SIDING AROUND WINDOW W/ 8d GALV BOX NAIL @ 4" O.C. W/ JOE
6. DOOR FRAMING - USE 2 FULL HEIGHT STUDS W/ 1 TRIMMER EACH SIDE OF DOOR FRAME. ALL NAILING SAME AS WINDOW FRAMING.
7. FASTEN DOUBLE COLUMN STUDS TOGETHER W/ DOUBLE ROW OF 10d @ 16" O.C.
8. FASTEN 5/8" T-1-11 SIDING TO STUDS W/ 8d GALV NAILS @ 6" O.C. EDGES, 12" O.C. FIELD. NAIL SIDING @ 6" O.C. AROUND ALL OPENINGS (OR GAPS).
9. SPLICE BOTTOM PLATE W/ 16d @ 2'-0" LONG NAIL PLATE. CENTER PLATE OVER JOINT AND INSTALL W/ A NO-BOUNCE HAMMER.
10. FASTEN DOUBLE 2x4 SILLS TOGETHER W/ 10d @ 8" O.C. STAGGERED
11. FASTEN BIRD JOINT TO WALL W/ 3/8" x 2" LONG LAG SCREWS 3 EACH SIDE, 3 ACROSS BOTTOM. N/A W/ JOE

'CLASSROOM'

Leonard J. Schroeder A.I.A. C-3680



OFFICE OF THE STATE ARCHITECT  
STRUCTURAL SAFETY SECTION  
A45 202  
D.K. [Signature]  
PRINCIPAL STRUCTURAL ENGINEER

AUG 30 1983

AS NOTED

Date	By	No.	Date	By	DR
REVISIONS					
Project: BAKERSFIELD CITY SCHOOL DIST.					
Title: WALL FRAMING					
SCALE: 1/4" = 1'-0"	DATE: 8/25/83	DRN BY: [Signature]	CHK BY:	JOB NO. 5-2	
TELUS CORPORATION 7340 FRENCH ROAD SACRAMENTO CA. PLANS					
CITY: SACRAMENTO, CA. STATE: CALIF. COUNTY: YUBA					