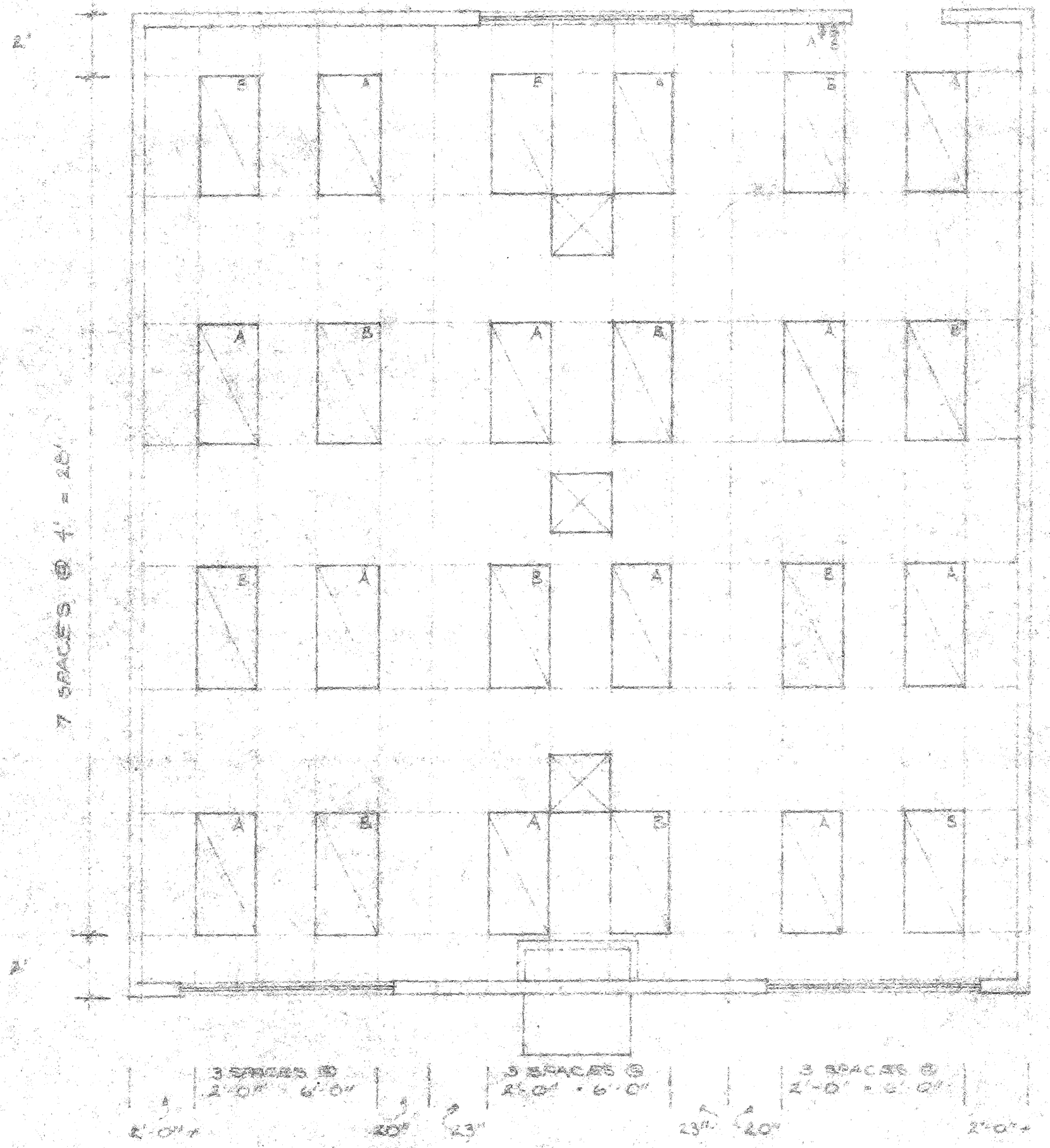
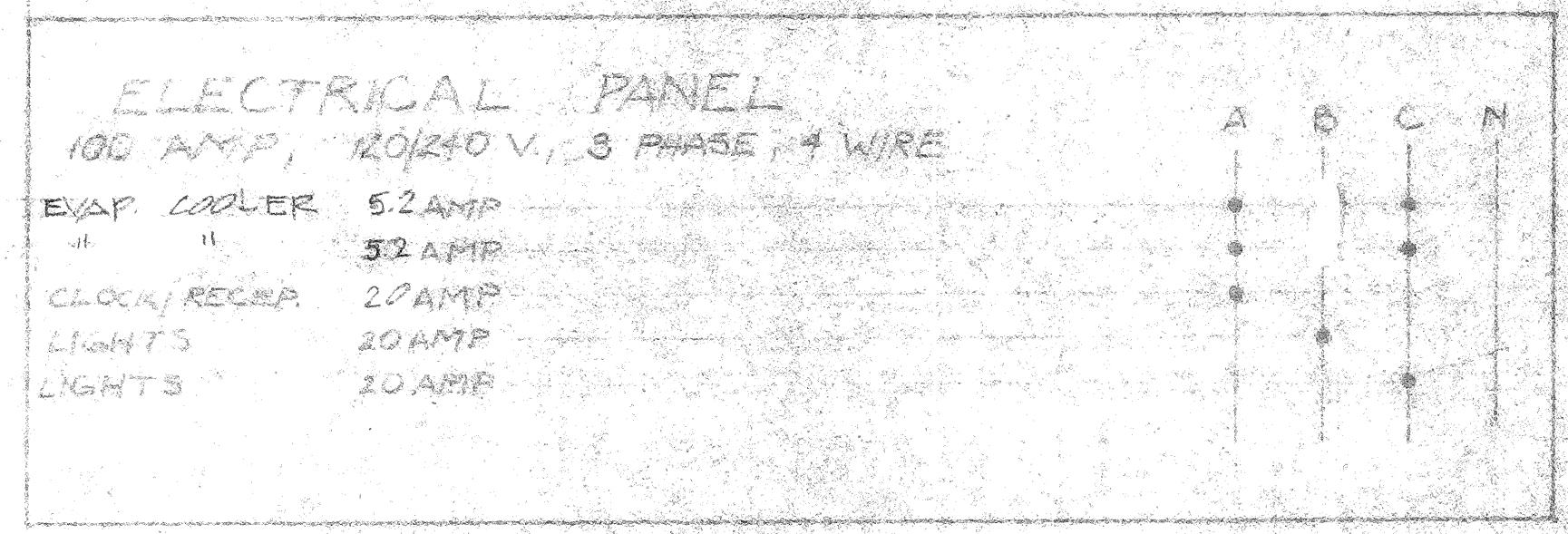


BILL OF MATERIALS				
MARK	QTY	SIZE OR MODEL NO.	DESCRIPTION	REMARKS

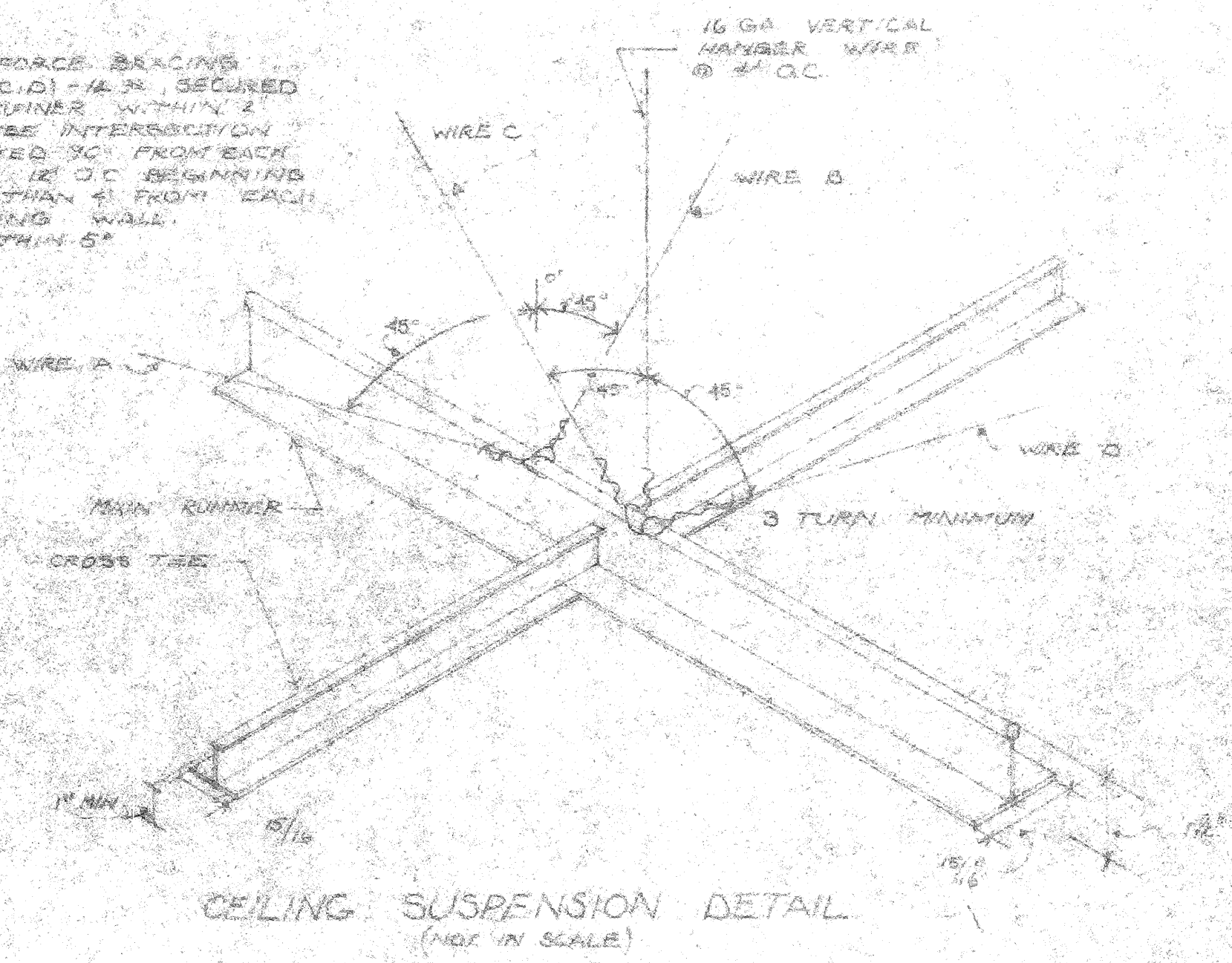
MAIN ELECTRICAL PANEL MOUNTED ON UNIT AT EAST END - SUB FEED THROUGH ATTIC TO SUB PANEL EACH CLASSROOM.



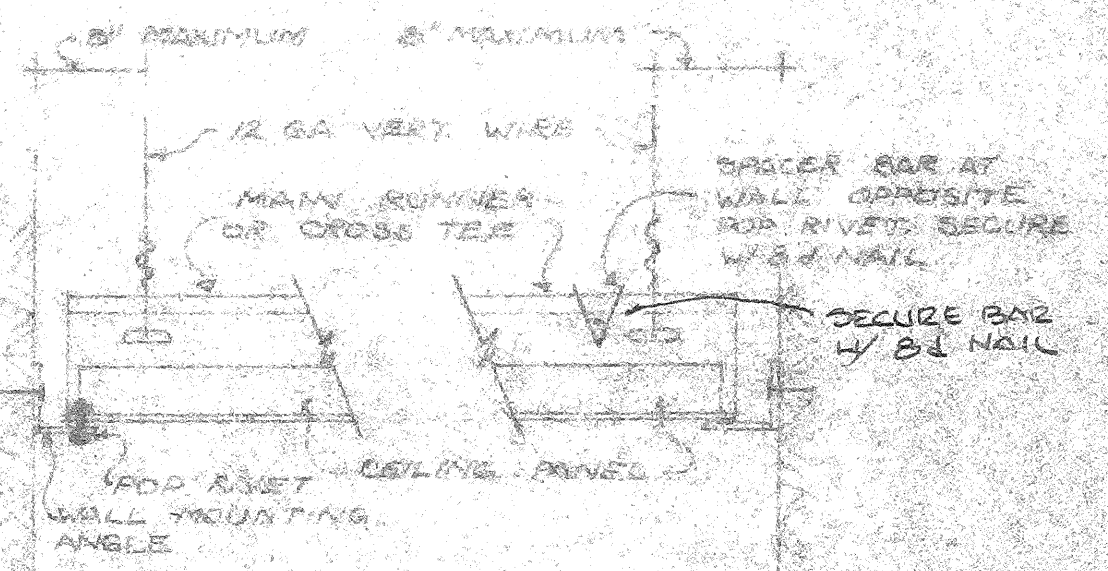
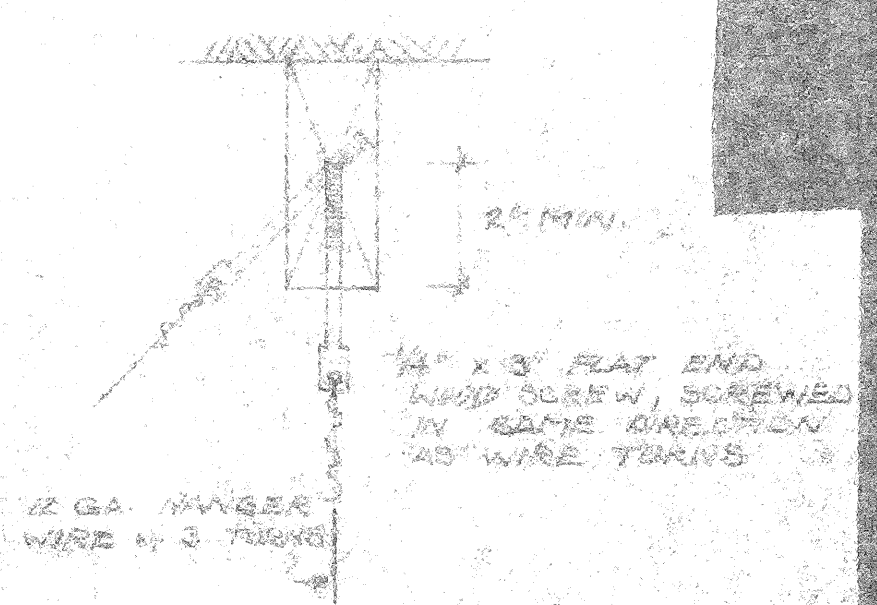
SUSPEND CEILING GRID LAYOUT PLAN

MAIN RAIL = DOWN DX 24
CROSS RAIL = " DX 0-416

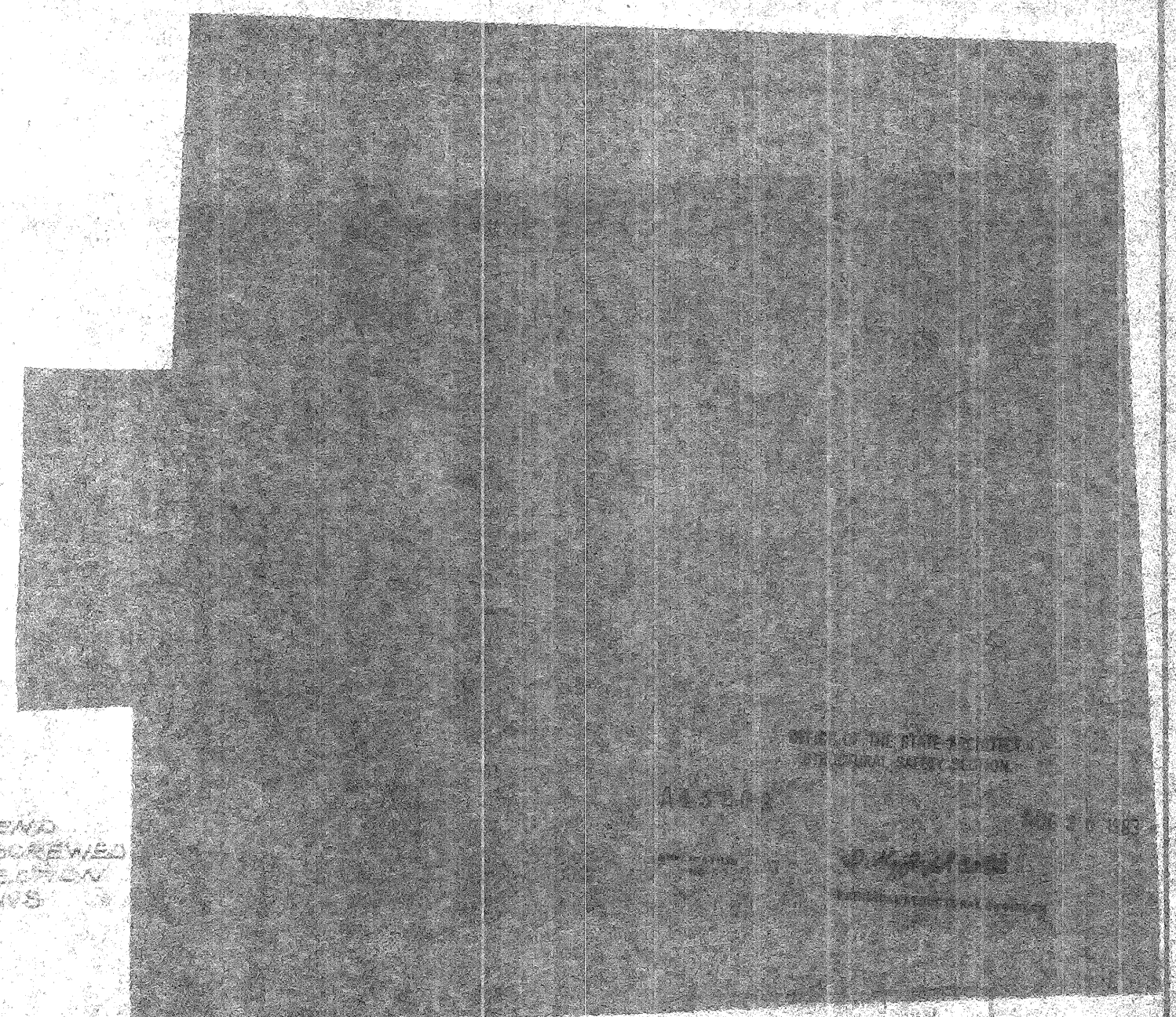
LATERAL FORCE BRACING WIRES (A, B, C, D) - #12, SECURED TO MAIN RUNNER WITHIN 2' OF CROSS TEE INTERSECTION AND SPLATED 90° FROM EACH OTHER AT 12" O.C. BEGINNING NOT MORE THAN 4' FROM EACH SURROUNDING WALL. ANGLES WITHIN 5°



CEILING SUSPENSION DETAIL (NOT IN SCALE)



NOTE: LIGHT FIXTURES SHALL BE INDEPENDENTLY SUPPORTED AT ALL FOUR (4) CORNERS WITH #12 WIRES ATTACHED TO FIXTURE WITH 5 TIGHT TURNS & TO HOOK PER DETAIL ABOVE. HANGER WIRES SHALL BE TAUT



CLASSROOM
Leonard J. Schroeder A.E.C. C-3680

Date	By	No.	Desc.	By	No.
REVISIONS					
Project: BAKERSFIELD CITY SCHOOL DIST.					
Title: CEILING PLAN					
Scale: 1/4" = 1'-0"					
TELLUS CORPORATION 7540 FRENCH ROAD SACRAMENTO CA PLANT COLOR: CA. SACRAMENTO CA. SALEM, ORG. BOOSE, IOWA.					
Sheet No: A-4					Fig. No: