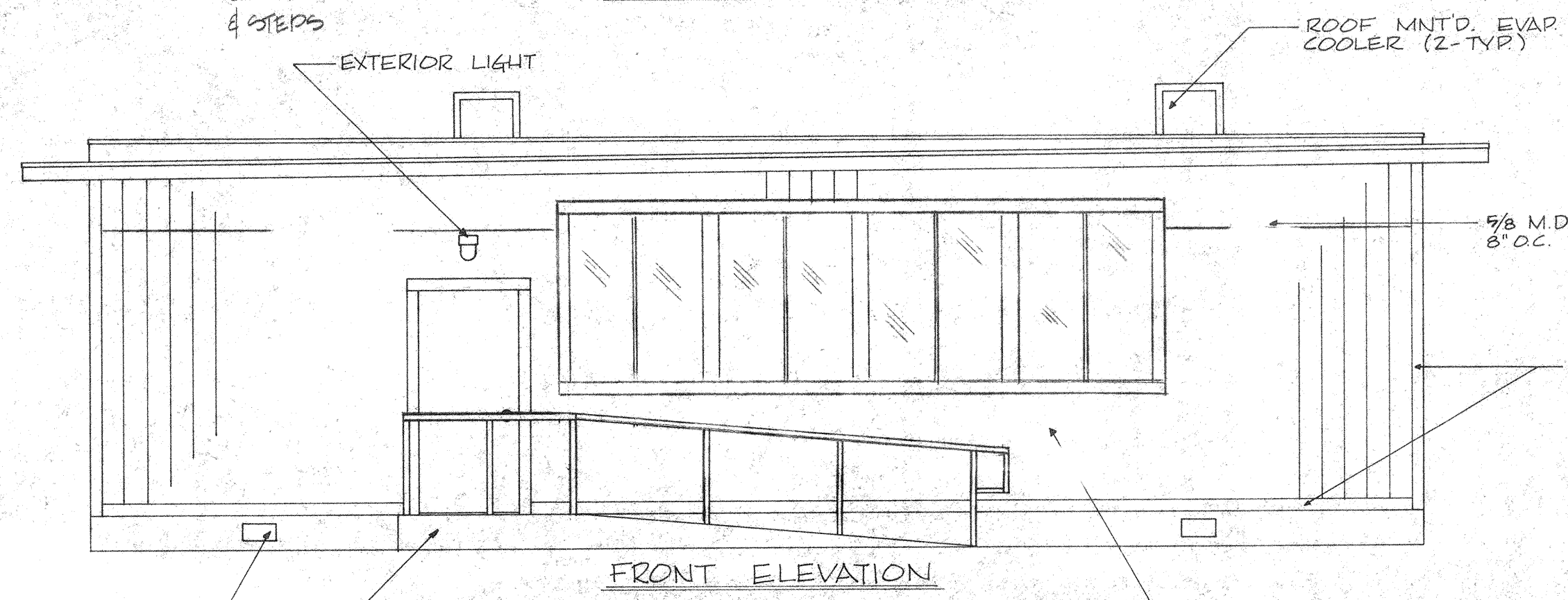
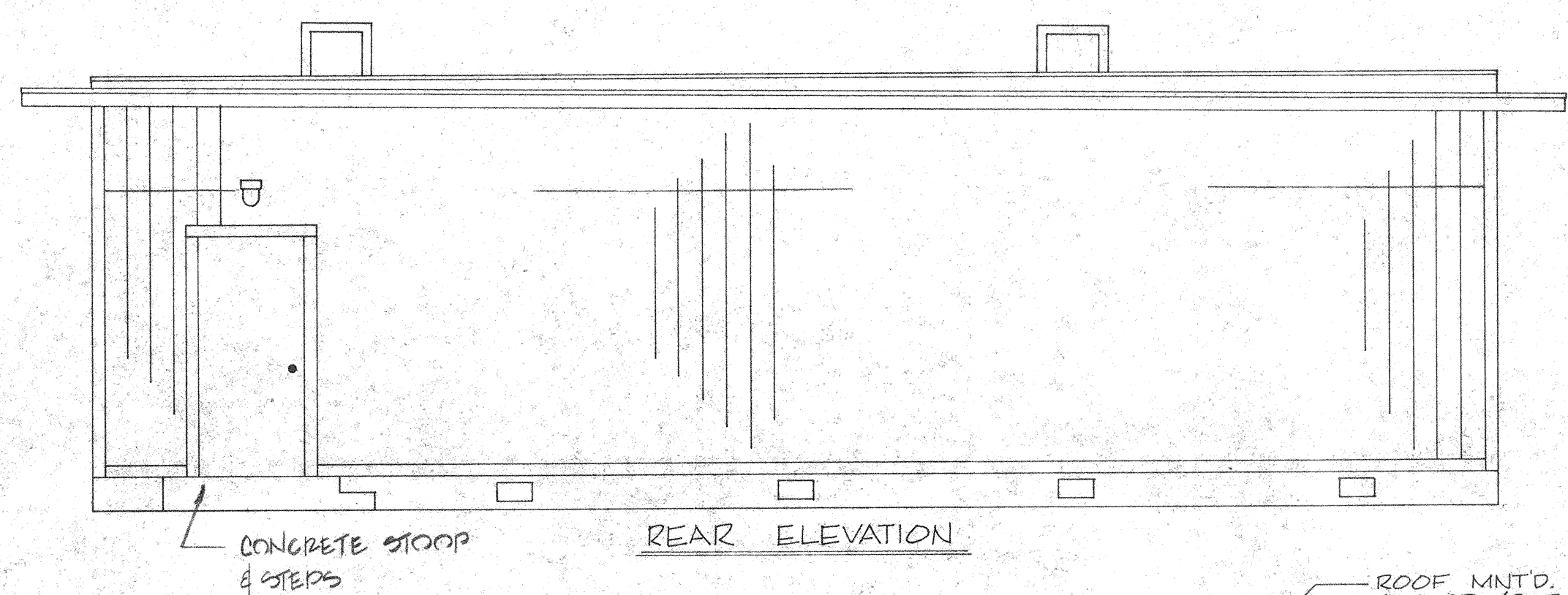
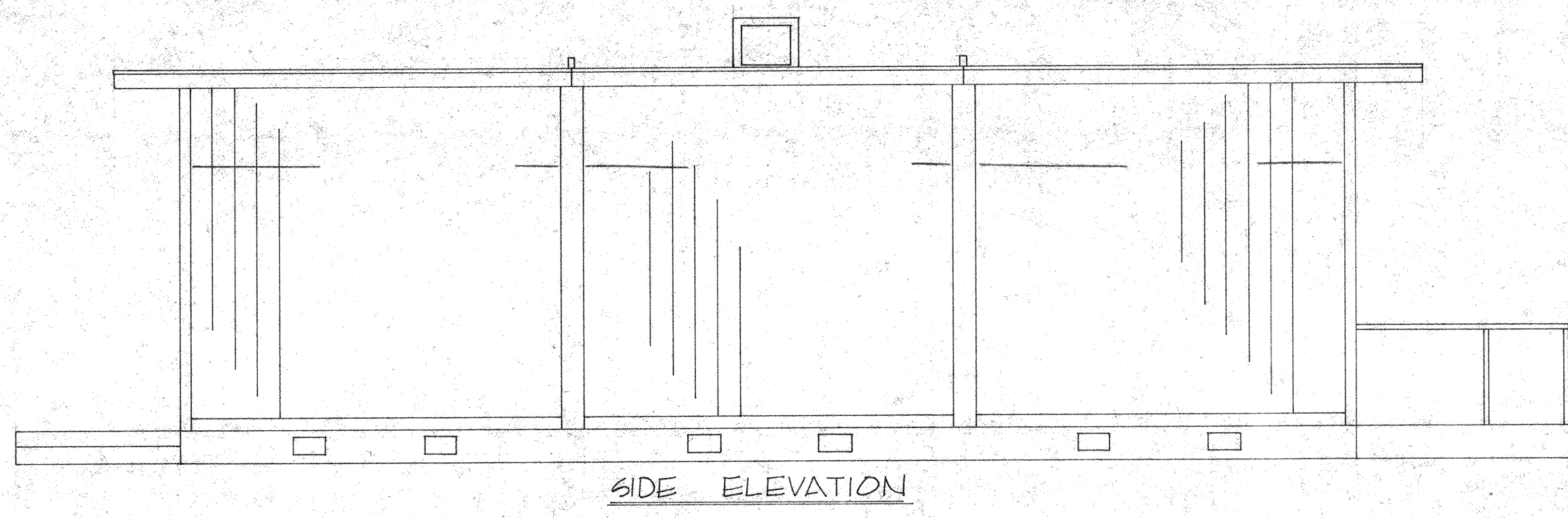


BILL OF MATERIALS				
MARK	QTY.	SIZE OR MODEL NO.	DESCRIPTION	REMARKS



SCREENED VENT EQUAL TO 1.5 S.F. PER 25 LIN. FT.

CONCRETE RAMP W/ RAILING PER TITLE 24

FOR RAMP FRAMING & HANDRAIL DETAILS SEE SHT. S-C

4"x5" X0 WINDOW W/ LOW TRANS. GLASS & DARK BRNZ. FRAME. TEMPERED GLASS PROVIDE SCREENS

CONCRETE STOOP & STEPS

EXTERIOR LIGHT

ROOF MNT'D. EVAP. COOLER (2-TYP)

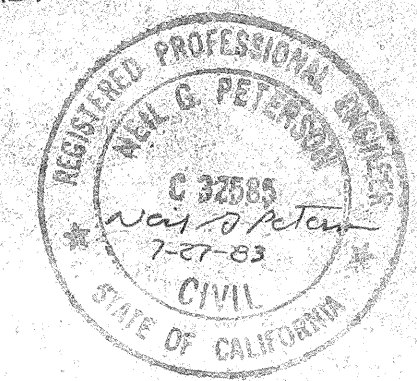
5/8" M.D.O. SIDING W/ GROOVES @ 8" O.C. TYP. EXT. (PAINTED)

1"x4" WOOD TRIM TYP.

SEAL OF THE STATE ARCHITECT
SACRAMENTO, CALIFORNIA
AUG 5 1983
D. H. Schmitt

AUG 3 0 1983
C. J. [Signature]

'KINDERGARTEN'
Leonard J. Schroeder A.T.A. C-3680



Date	By	No.	Date	By	No.
REVISIONS					
Project BAKERSFIELD CITY SCHOOL DISTRICT					
Title ELEVATIONS (EXTERIOR)					DWG. NO.
SCALE 1/4" = 1'-0"	DATE 6-25-83	DNW BY R.K.O.	CHKD BY	SHEET NO.	
TELLUS CORPORATION					NO. NO.
7540 FRENCH ROAD SACRAMENTO, CA COLTON PLANT					Sht 2 of
COLTON, CA	SACRAMENTO, CA	SALEM, ORG.	BOISE, IDAHO		