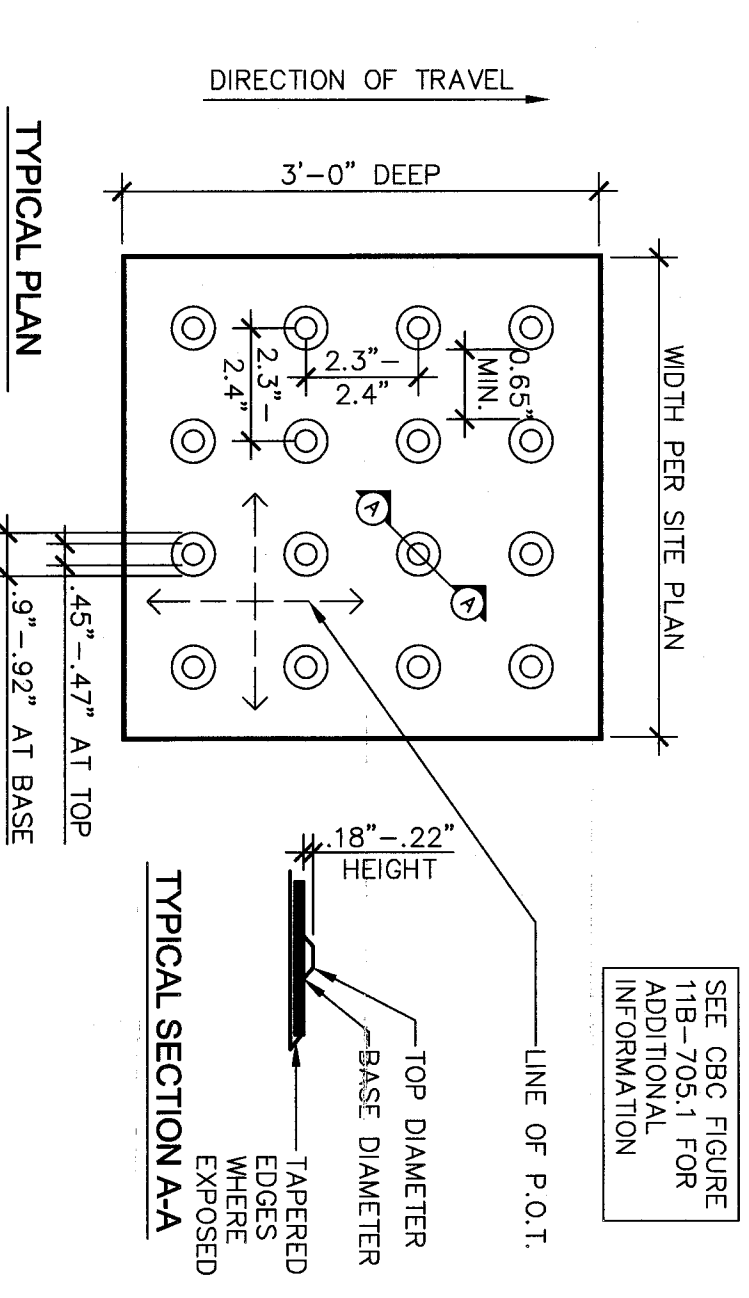
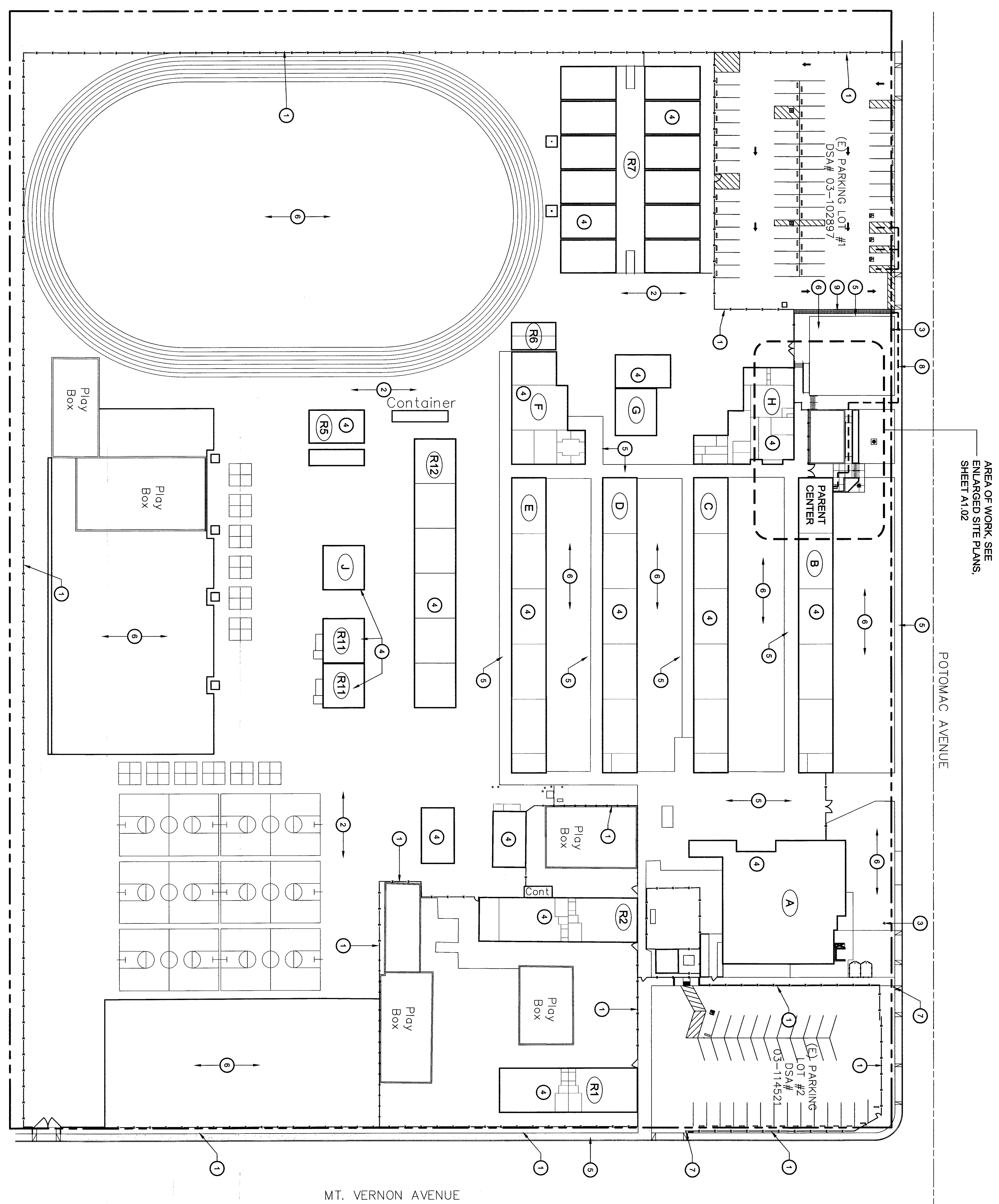


SITE PLAN
MT. VERNON ELEMENTARY SCHOOL

SCALE: 1" = 40'



5 TRUNCATED DOMES
SCALE: NO SCALE

KEY NOTES

1. (E) CHAIN LINK FENCE AND GATE TO REMAIN
2. (E) A.C. PAVING TO REMAIN
3. EXISTING FIRE HYDRANT TO REMAIN
4. (E) BUILDING TO REMAIN (NO WORK)
5. (E) CONCRETE WALK TO REMAIN (NO WORK)
6. (E) TIRE AND BRIGADION TO REMAIN
7. EXISTING SITE ENTRANCE SIGN PER DSA APPL. NO. 03-114521
8. PROPOSED ACCESSIBLE PATH OF TRAVEL (P.O.T.) REFER TO ACCESSIBILITY NOTE. THIS SHEET NEW 3'-0\"/>

ACCESSIBILITY NOTES

ARCHITECT HAS INSPECTED THE PATH OF TRAVEL (P.O.T.) AS INDICATED ON THE PLANS AND HAS FOUND IT WORK WHICH WOULD CAUSE IT TO BE A BARRIER-FREE ACCESSIBLE ROUTE:

- AT LEAST 48\"/>

BUILDING KEY

#	DSA APPLICATION	BUILDING USE
(A)	19/177 / 03-114521	MULTI-USE CAFETERIA, KITCHEN
(B)	3282	5 CLASSROOMS
(C)	3282	5 CLASSROOMS
(D)	3282	5 CLASSROOMS
(E)	30420	4 MUSIC CLASSROOMS
(F)	3282 / 3282	ADMINISTRATION
(G)	3282 / 3282	ADMINISTRATION
(H)	03-102897	TOILETS
(I)	3282	2 KINDERGARTEN CLASSROOMS
(J)	27729 / 30116	2 KINDERGARTEN CLASSROOMS
(K)	NON-COMFORMAL	KINDERGARTEN MAGNET
(L)	30420	RELO TOILETS
(M)	03-102897	12 RELO CLASSROOMS
(N)	54429	2 RELO CLASSROOMS
(O)	30420	6 RELO CLASSROOMS

LEGEND

- PROPERTY LINE
- PARKED LINE INDICATES ACCESSIBLE PART OF TRAVEL

Integrated designs by SOMAM, Inc.
ARCHITECTURE · ENGINEERING · INTERIOR DESIGN · CONSTRUCTION MANAGEMENT
6011 N. Fresno, Suite 130 - Fresno, California 93710
Phone (559) 436-0881 Fax (559) 436-0887 E-Mail: design@somam.com
www.integrateddesigns.com

SITE PLAN
SITE ACCESS
MT. VERNON ELEMENTARY SCHOOL
BAKERSFIELD CITY SCHOOL DISTRICT
2161 POTOMAC AVE BAKERSFIELD, CA 93307

Issue Date: 06/19/15
Date: 06/18/15
Designer: JMF
DR: JMF
PC: JMF

Job No.: 5165
Sheet No.: A1.01

Released by: JOSH FRANCIS

