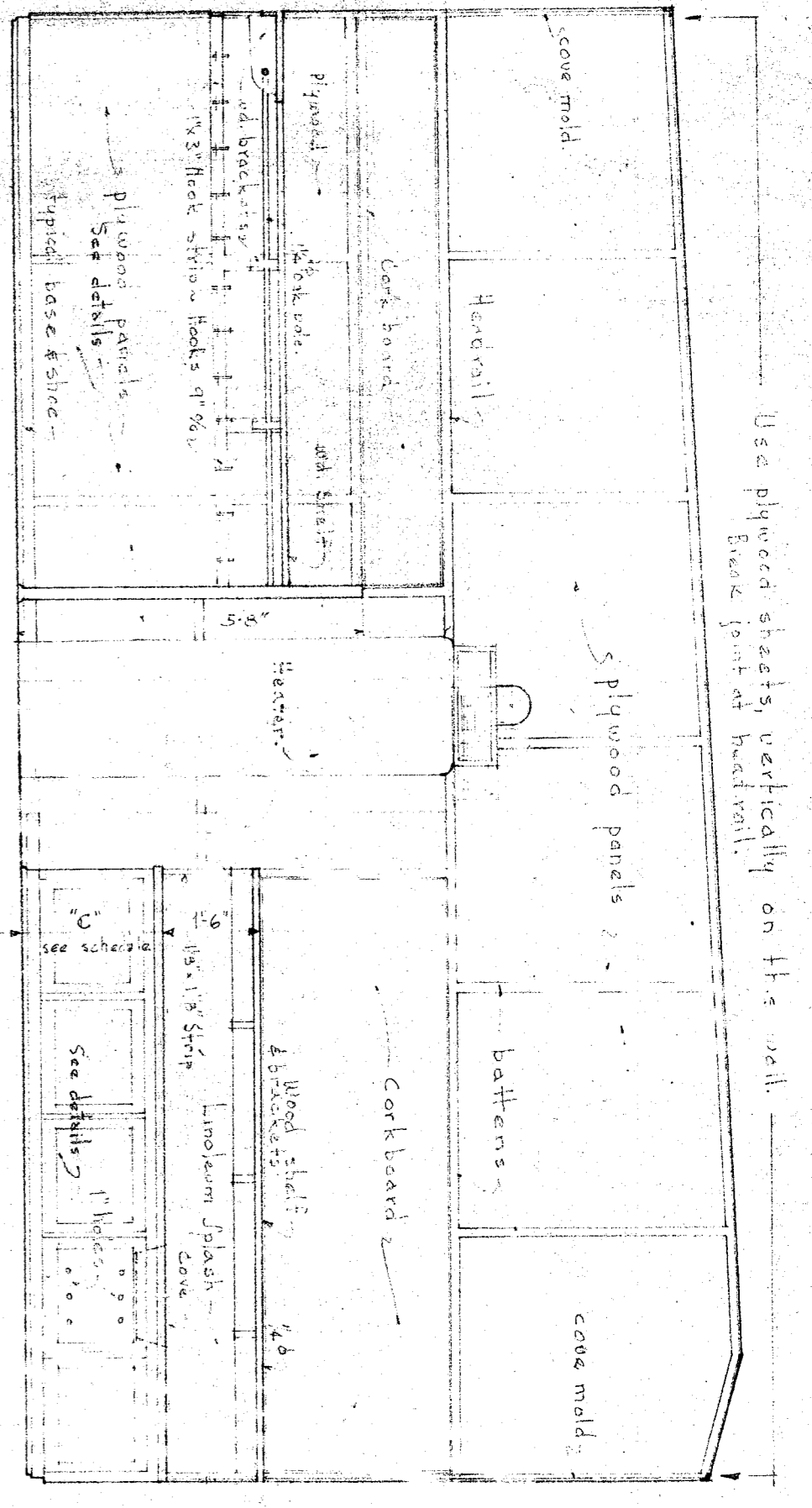
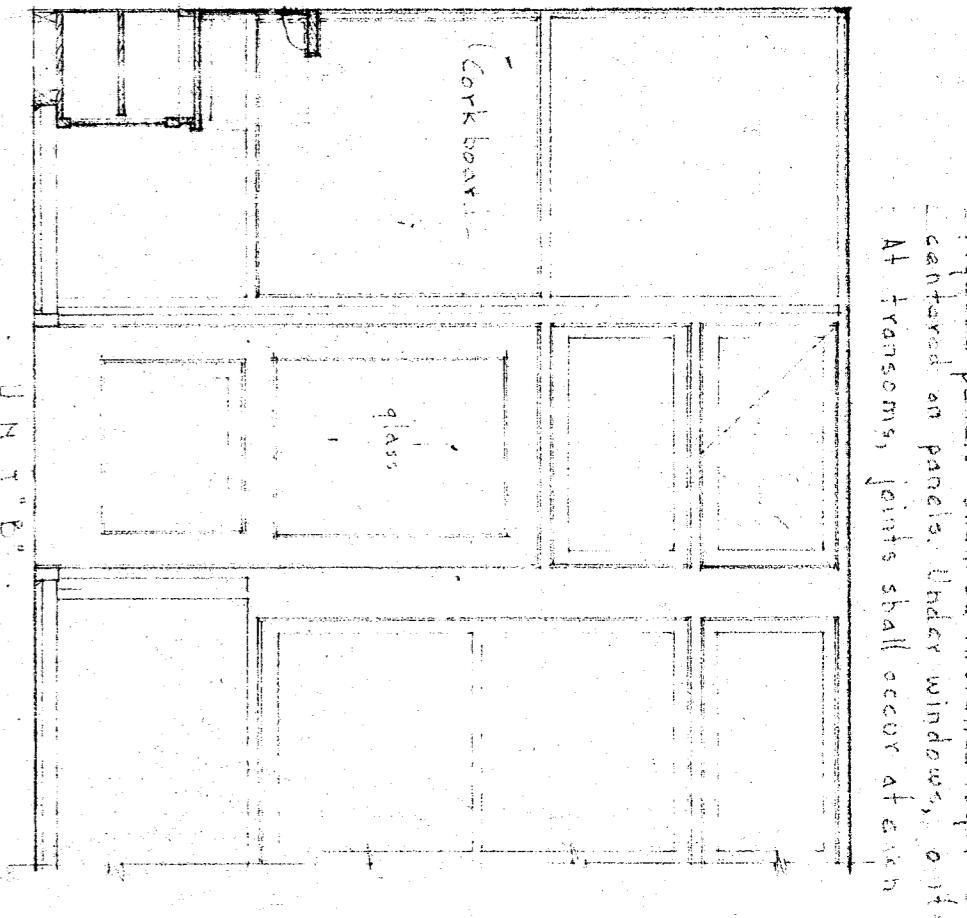


Use plywood sheets vertically on H & L wall.
 Base joint at head wall.

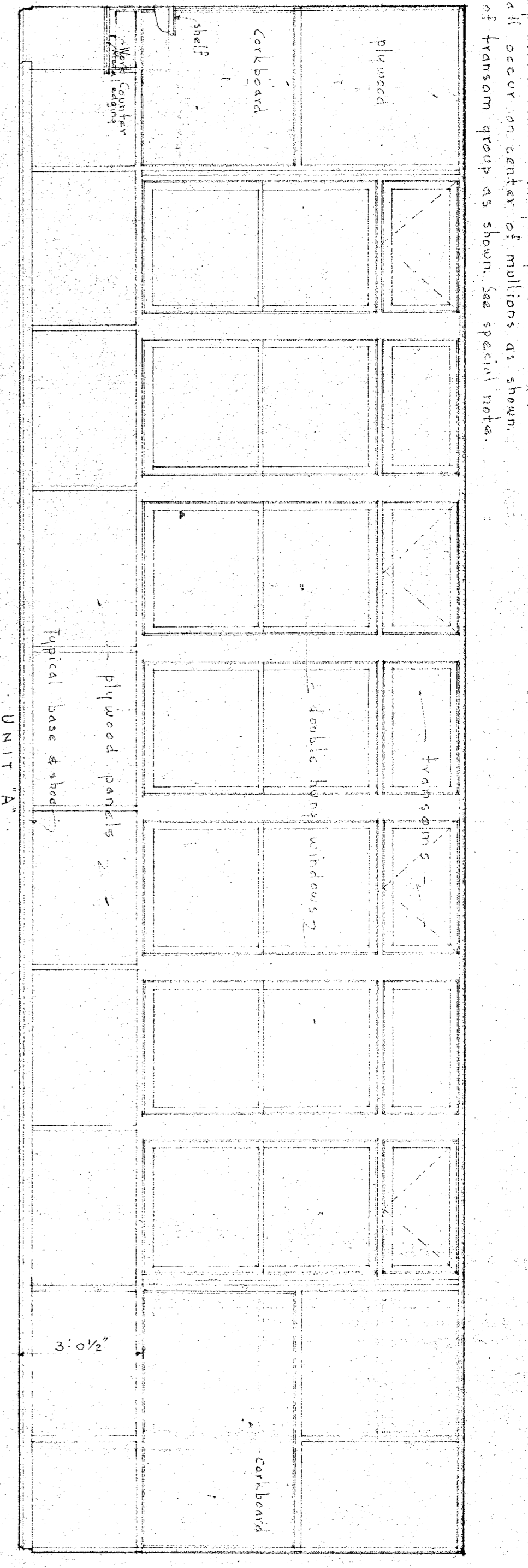


W E S T W A L L

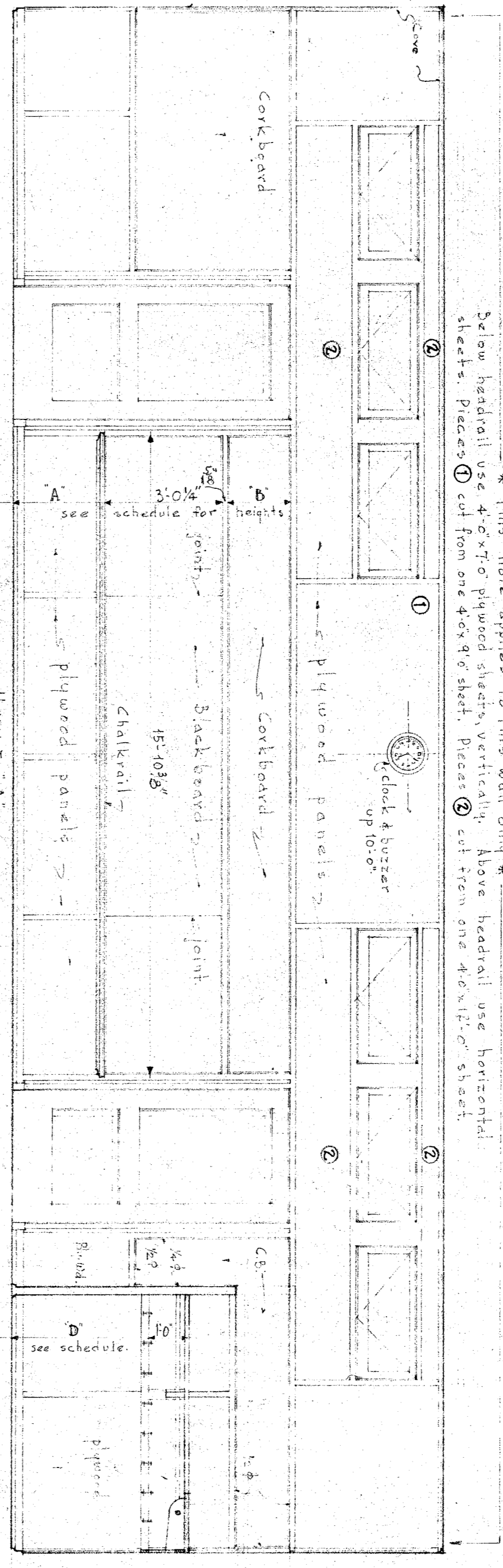
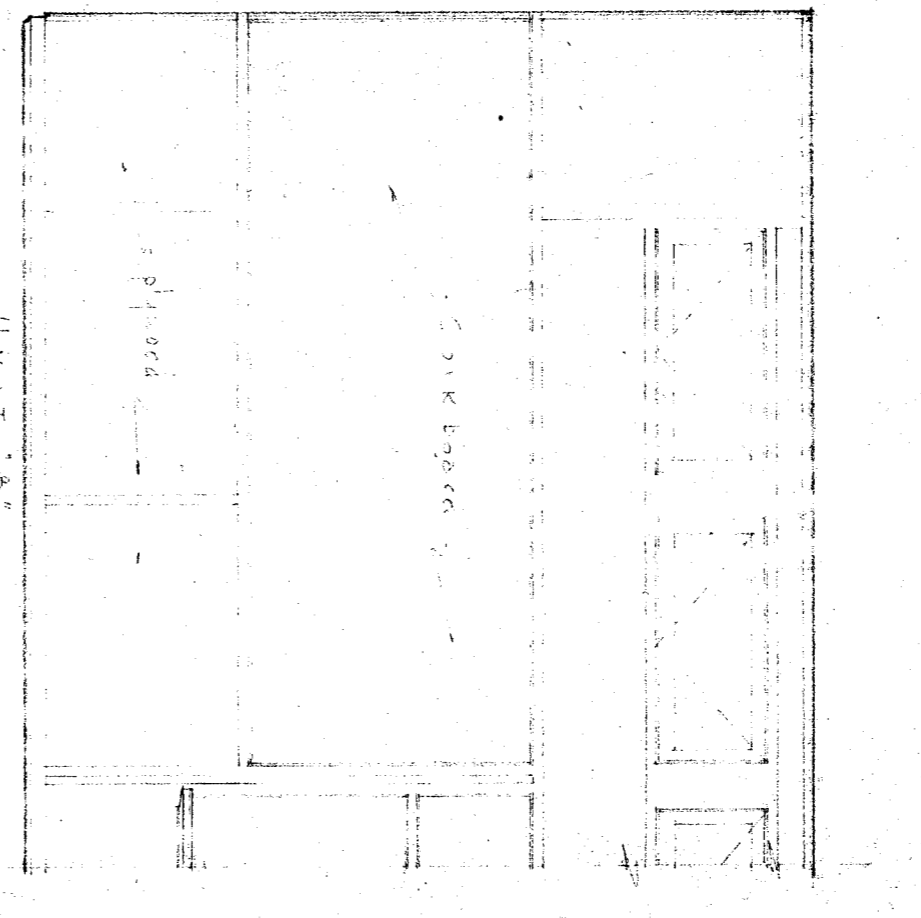
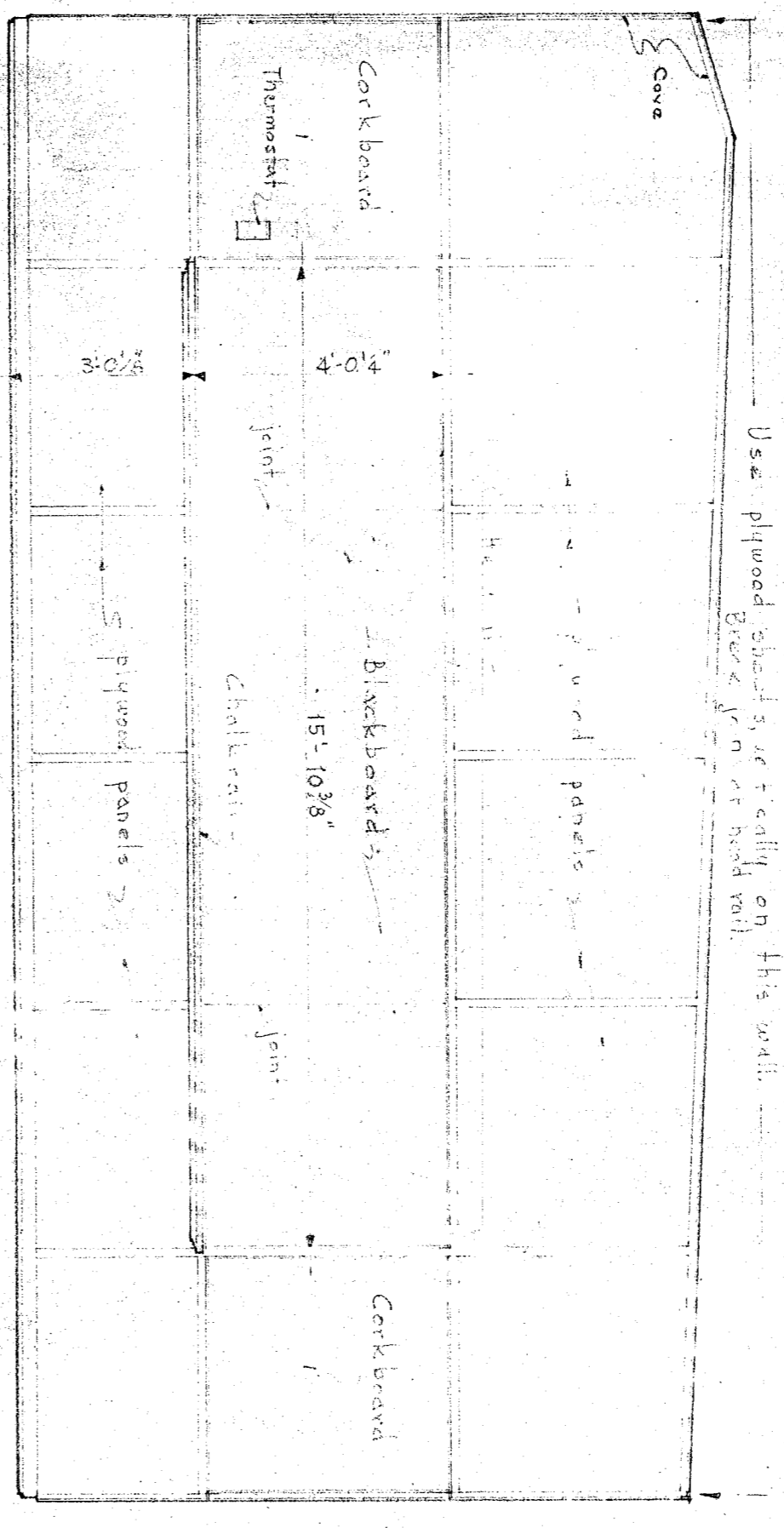
PLYWOOD PANEL NOTE:
 Plywood panels shall be installed vertically with relation to all openings. Doors shall be centered on panels. Under windows, etc., shall occur on center of mullions or stiles. If transoms joints shall occur at a end of transom group as shown, see special note.



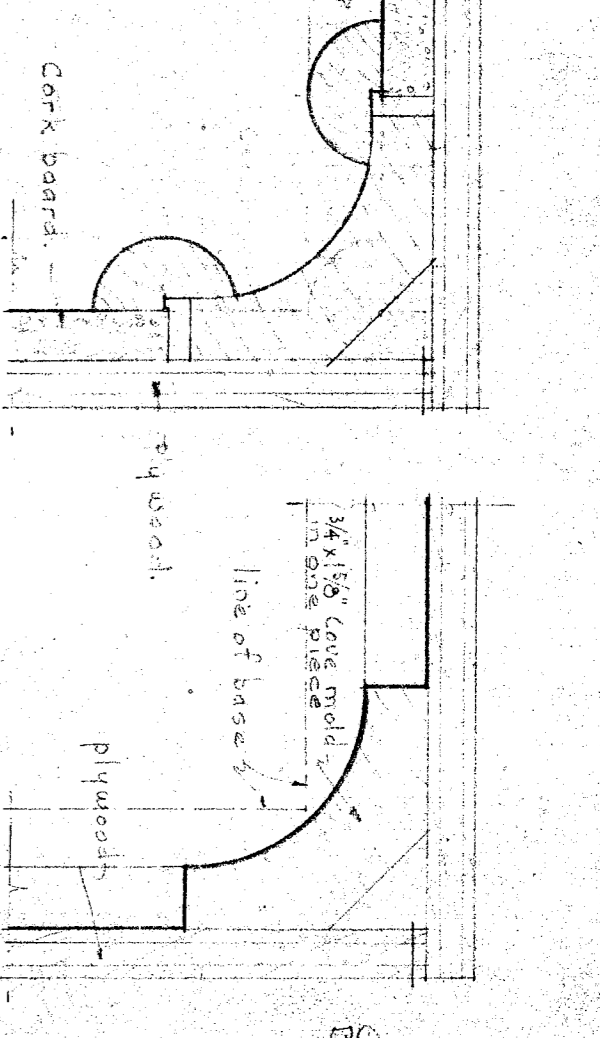
N O R T H W A L L



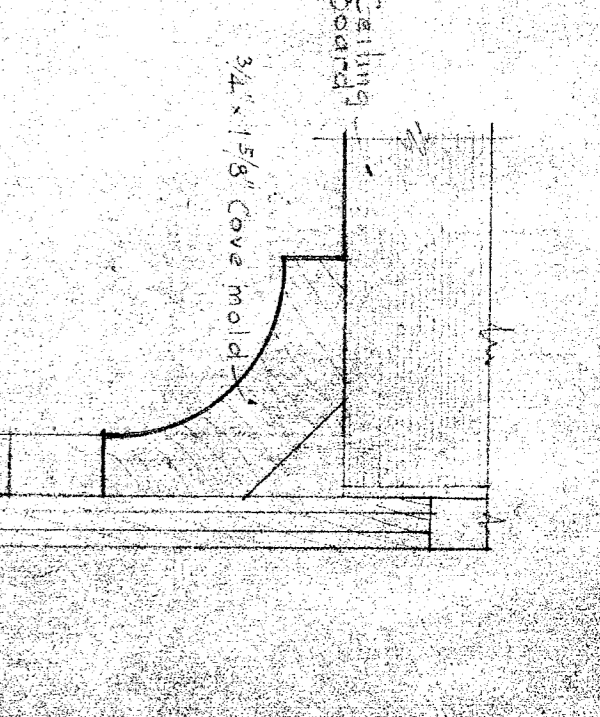
N O R T H W A L L



S O U T H W A L L



INSIDE CORNER WHERE CORKBOARD OCCURS, TYPICAL INSIDE



CEILING TRIM

SCHEDULE OF HEIGHTS - CLASSROOM MILLWORK, ETC.

ITEM	DESCRIPTION	HEIGHT	FINISH
1	Baseboard	1" - 2"	Paint
2	Chair Rail	30"	Paint
3	Wainscoting	36"	Paint
4	Baseboard	1" - 2"	Paint
5	Baseboard	1" - 2"	Paint
6	Baseboard	1" - 2"	Paint
7	Baseboard	1" - 2"	Paint
8	Baseboard	1" - 2"	Paint
9	Baseboard	1" - 2"	Paint
10	Baseboard	1" - 2"	Paint
11	Baseboard	1" - 2"	Paint
12	Baseboard	1" - 2"	Paint
13	Baseboard	1" - 2"	Paint
14	Baseboard	1" - 2"	Paint
15	Baseboard	1" - 2"	Paint
16	Baseboard	1" - 2"	Paint
17	Baseboard	1" - 2"	Paint
18	Baseboard	1" - 2"	Paint
19	Baseboard	1" - 2"	Paint
20	Baseboard	1" - 2"	Paint
21	Baseboard	1" - 2"	Paint
22	Baseboard	1" - 2"	Paint
23	Baseboard	1" - 2"	Paint
24	Baseboard	1" - 2"	Paint

E A S T W A L L

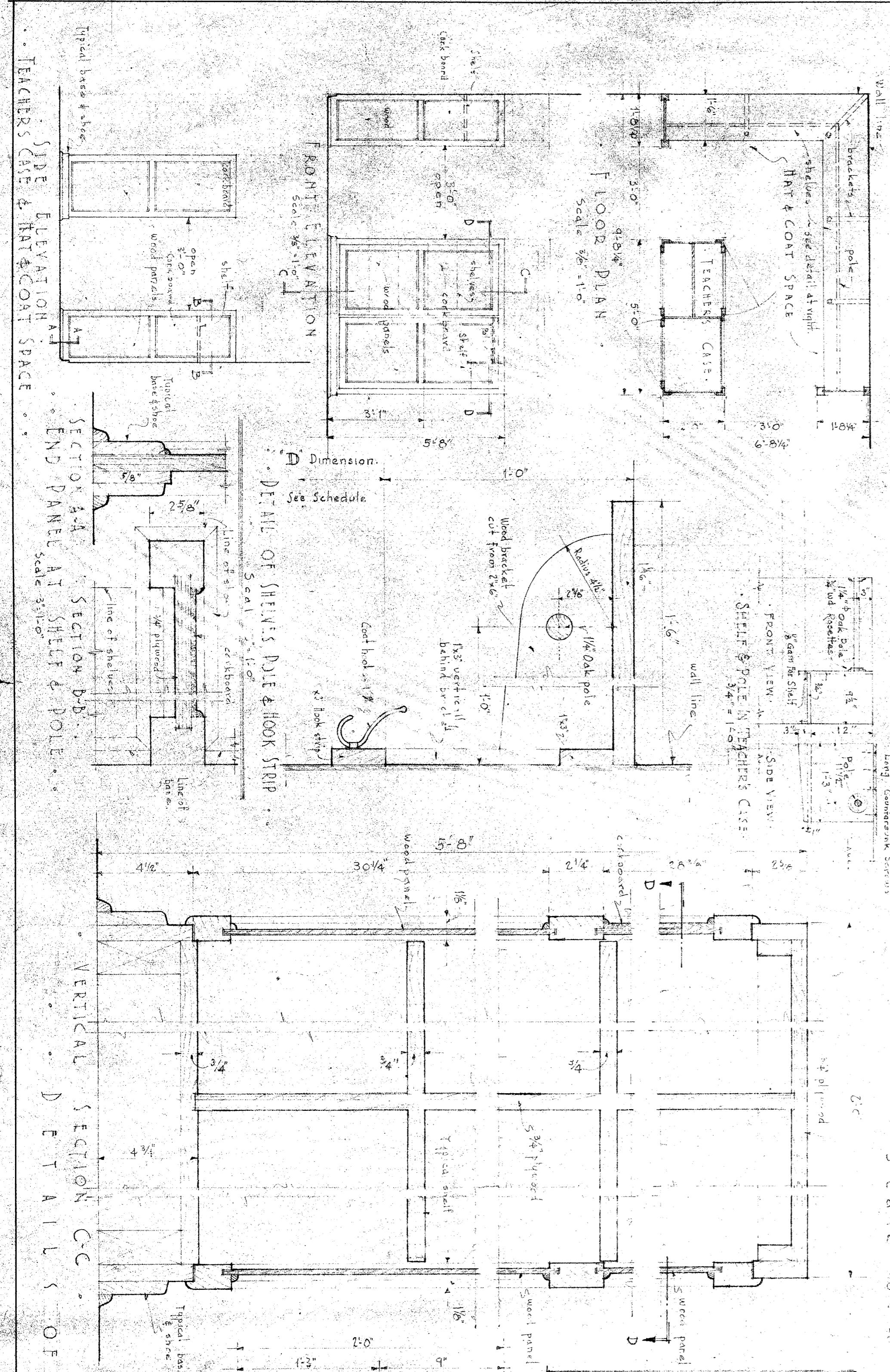
S O U T H W A L L

S O U T H W A L L

E L E V A T I O N S O F T Y P I C A L C L A S S R O O M S

S O U T H W A L L

S O U T H W A L L



E A S T W A L L

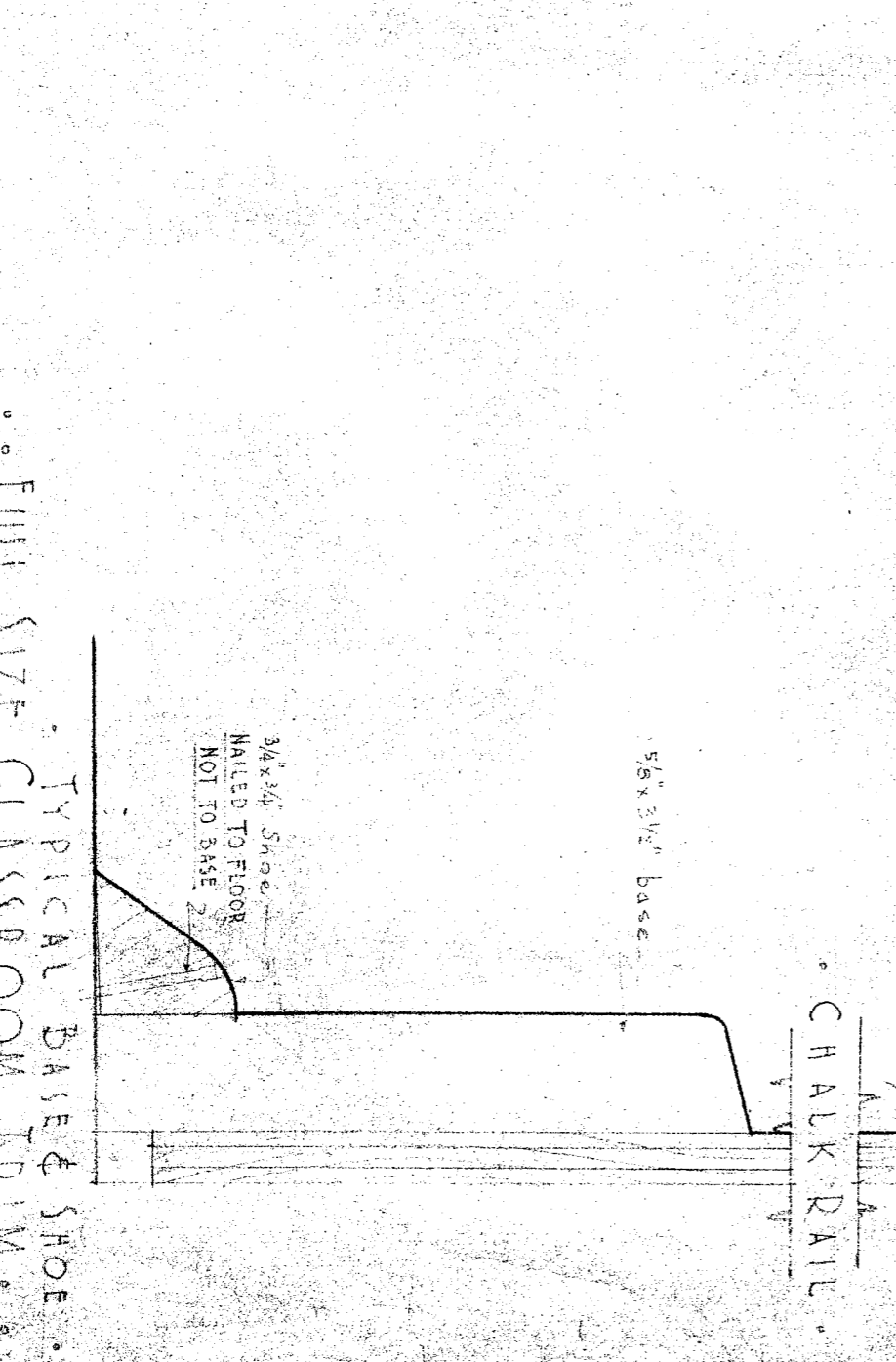
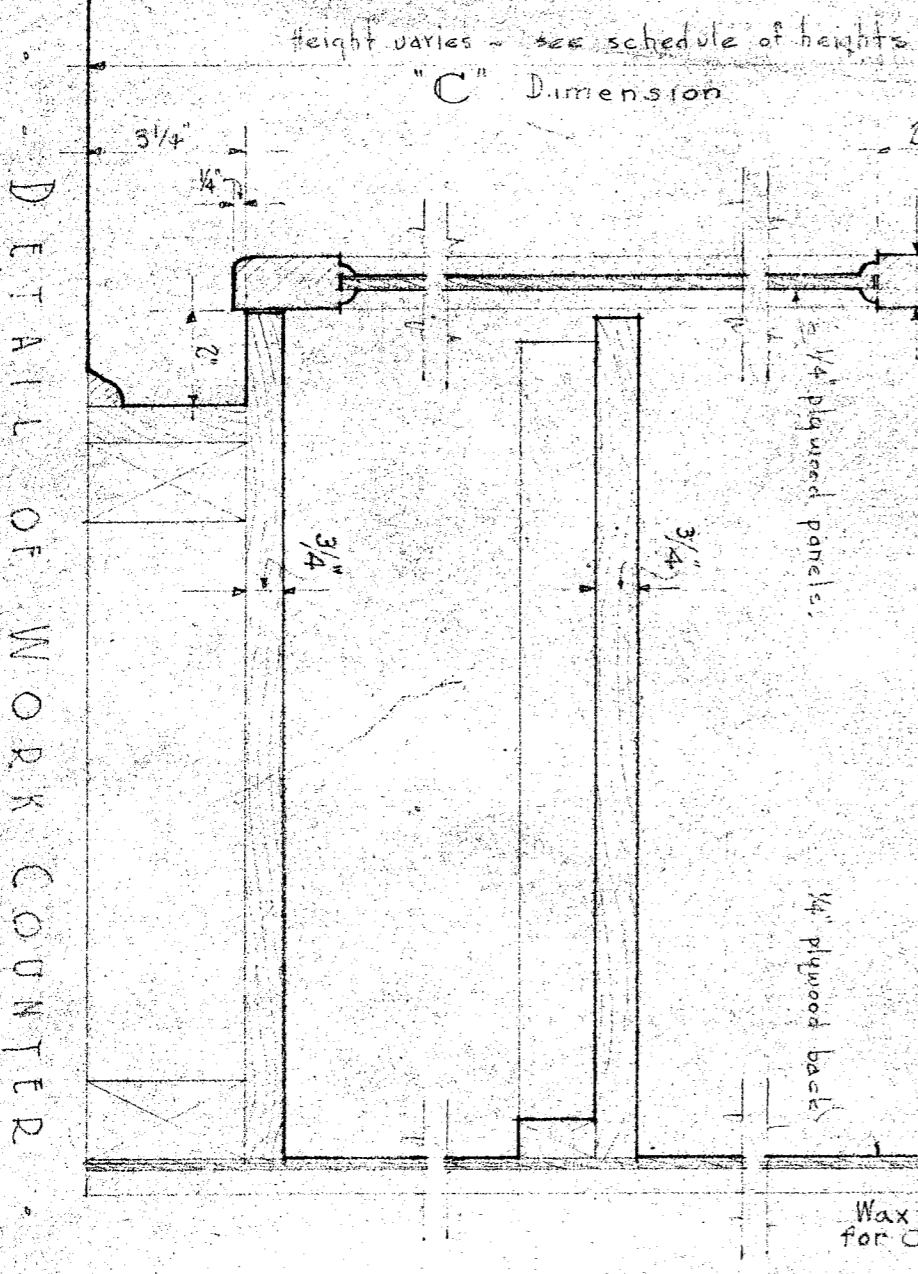
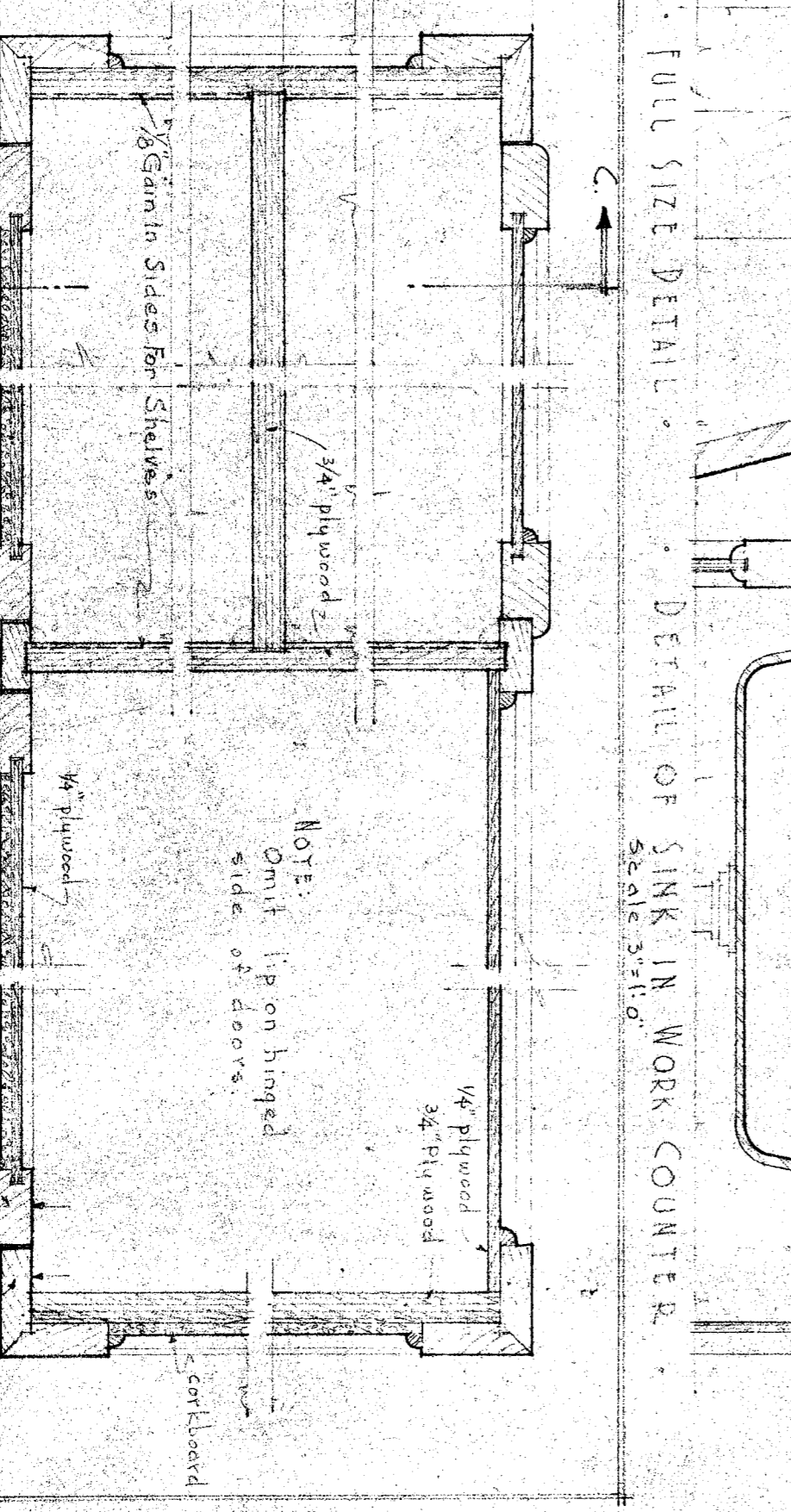
S O U T H W A L L

S O U T H W A L L

STATE OF CALIFORNIA
 DEPARTMENT OF PUBLIC WORKS
 DIVISION OF ARCHITECTURE
 5-5-50
 APPROVED
 [Signature]

APPROVED
 [Signature]
 SUPERVISOR OF SCHOOLS

STANTON WILLIARD
 ARCHITECT
 1314 Sycamore Street, Berkeley, California



TYPICAL BASE & SHOE