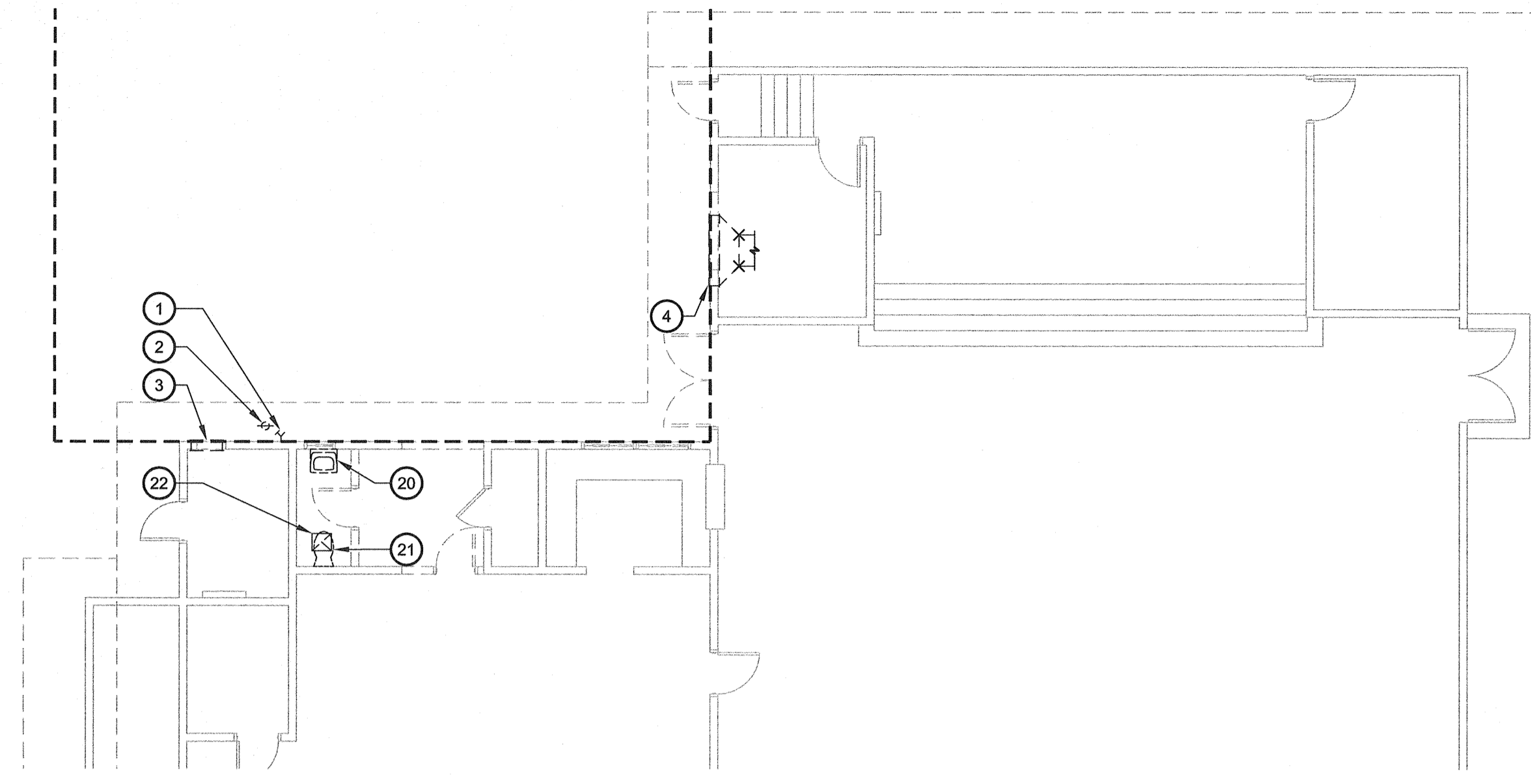


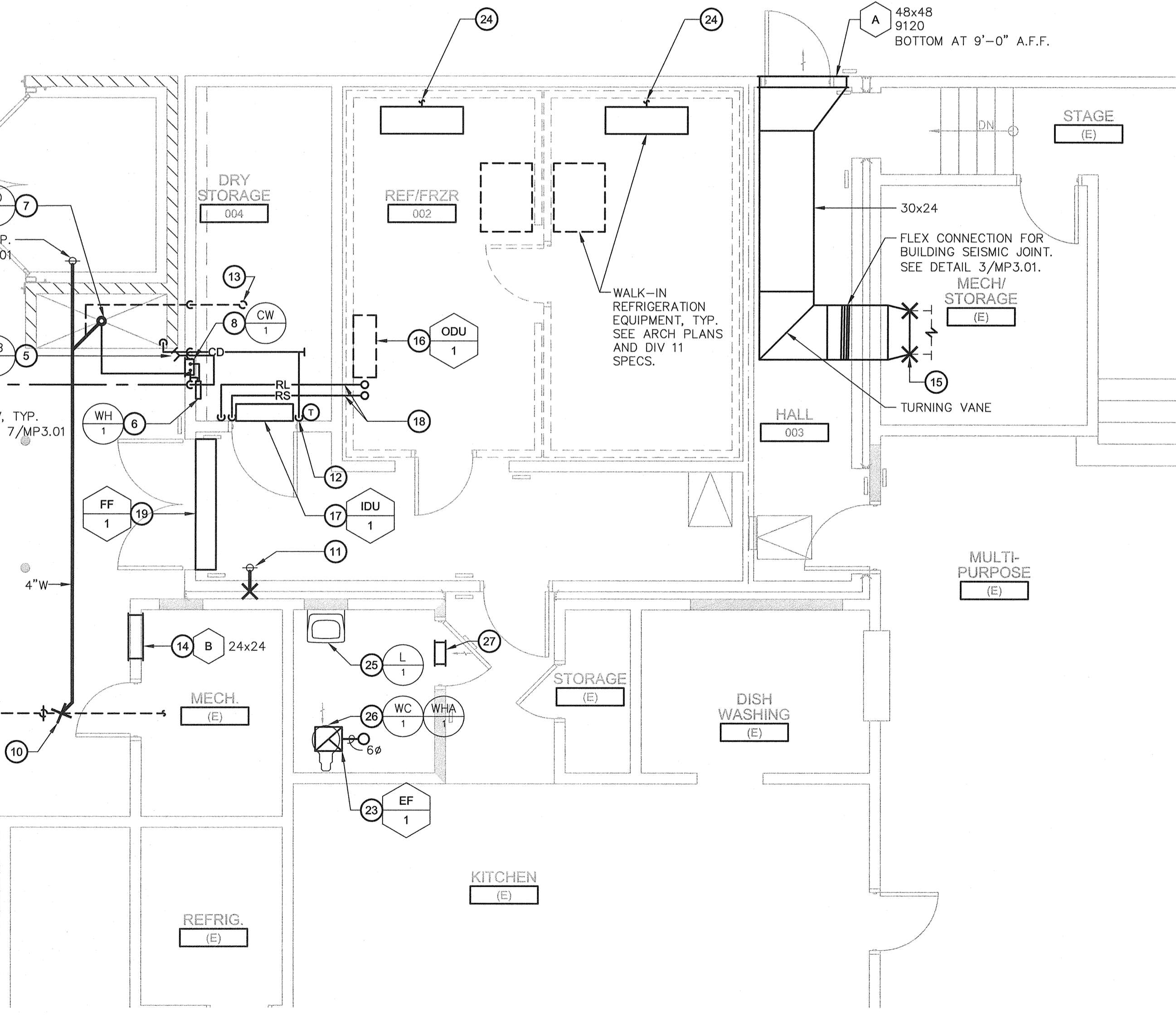
MECHANICAL DEMOLITION PLAN KITCHEN ADDITION

SCALE: 1/8" = 1'



MECHANICAL PLAN KITCHEN ADDITION

SCALE: 1/4" = 1'



HVAC LEGEND			PLUMBING LEGEND		
SYMBOL	DESCRIPTION	ABBR	SYMBOL	ABBR	DESCRIPTION
	EQUIPMENT DESIGNATION			S. W. D.	SOIL, WASTE OR DRAIN
	UNIT ABBREVIATION	AC-1		V	VENT
	NUMBER			CW	DOMESTIC COLD WATER
	GRILLE DESIGNATION			HW	DOMESTIC HOT WATER
	NECK SIZE & BLOW			HWR	DOMESTIC HOT WATER RETURN
	CFM			G	LOW PRESSURE NATURAL GAS
	SUPPLY AIR	SA		HPG	HIGH PRESSURE NATURAL GAS
	RETURN AIR	RA		RWL	RAIN WATER LEADER
	EXHAUST AIR	EXH		OL	OVERFLOW LEADER
	ACOUSTIC LINED DUCT	(L)		CD	CONDENSATE DRAIN
	DUCT RISER			FCO	FLOOR CLEANOUT
	DUCT DROP			COTG	CLEANOUT TO GRADE
	VOLUME CONTROL DAMPER	VCD		WCO	WALL CLEANOUT
	THERMOSTAT - 48" MAX. TO TOP OF BOX	T'STAT		VTR	VENT THROUGH ROOF
	SWITCH			GV OR SOV	GATE OR SHUT - OFF VALVE
	EXISTING	(E)		BV	BALL VALVE
	NEW	(N)		GC	GAS COCK
	OUTSIDE AIR	OSA		CV	CHECK VALVE
	POINT OF CONNECTION	POC		BF	BUTTERFLY VALVE
	TYPICAL	TYP		STR	STRAINER
	REFRIGERANT LIQUID	RL			UNION
	REFRIGERANT SUCTION	RS			ELBOW UP
					ELBOW DOWN
				RED	REDUCER
				HB	HOSE BIBB
				PRV	PRESSURE RELIEF VALVE
				POC	POINT OF CONNECTION
					CAP

- ### KEY NOTES
- REMOVE EXISTING HOSE BIBB AND CAP PIPING BEHIND FINISH SURFACE.
 - REMOVE EXISTING COTGS AND REPLACE WITH NEW FCO. SEE MECH REMODEL PLAN.
 - REMOVE EXISTING HIGH AND LOW COMBUSTION AIR LOUVERS. INFILL AND PAINT WALL TO MATCH EXISTING. SEE ARCH PLAN.
 - REMOVE EXISTING WALL EXHAUST LOUVER AND DUCT. SEE MECH REMODEL PLAN.
 - 3/4" CW TO HOSE BIBB.
 - BRANCH 1/2" CW TO INSTANTANEOUS WATER HEATER.
 - 3/4" WATER LINE BELOW GRADE FROM CAN WASH CONTROL BOX TO CAN WASH DRAIN.
 - 3/4" CW & 1/2" HW TO CAN WASH CONTROL BOX.
 - POC 1" CW TO (E) CW BELOW GRADE. FIELD VERIFY SIZE AND LOCATION.
 - POC 4" W TO (E) SEWER BELOW GRADE. FIELD VERIFY SIZE AND LOCATION.
 - CONNECT TO (E) SEWER AND PROVIDE NEW FCO. FIELD VERIFY SIZE AND LOCATION.
 - CONNECT 3/4" CD TO INDOOR UNIT AND OFFSET ABOVE CEILING. DISCHARGE 3/4" CD TO CAN WASH DRAIN WITH AIR GAP.
 - 2" VTR.
 - PROVIDE (2) COMBUSTION AIR LOUVERS. TOP AT 6" BELOW CEILING AND BOTTOM AT 6" ABOVE FINISH FLOOR. SEAL WATER TIGHT.
 - POC NEW 30x24 EXH DUCT TO EXISTING. FIELD VERIFY SIZE AND LOCATION.
 - OUTDOOR UNIT ON ROOF PLATFORM. SEE 1/A4.01
 - INDOOR UNIT ON WALL. SEE 9/MP3.01.
 - REFRIGERANT PIPING ABOVE CEILING.
 - FLY FAN ON WALL ABOVE DOOR. SEE 11/MP3.01.
 - REMOVE EXISTING LAV AND REPLACE WITH NEW. EXTEND PIPING AS NEEDED AND RE-CONNECT.
 - REMOVE EXISTING WATER CLOSET AND REPLACE WITH NEW. EXTEND PIPING AS NEEDED AND RE-CONNECT.
 - REMOVE EXISTING CEILING EXHAUST FAN AND ASSOCIATED DUCTWORK AND REPLACE WITH NEW.
 - CEILING EXHAUST FAN WITH 6" ROUND EXHAUST DUCT UP THRU ROOF. TERMINATE MINIMUM OF 3 FEET FROM BUILDING OPENINGS AND 10 FEET FROM FRESH AIR INTAKE. RE-USE EXISTING ROOF OPENING WHEN POSSIBLE. PROVIDE FLASHING AND CAP ASSEMBLY. SEE 8/MP3.01.
 - CONNECT 1" CD TO REFRIG/FREEZER EQUIPMENT AND DISCHARGE TO CAN WASH DRAIN WITH AIR GAP. INSTALL CD PER MANUFACTURER'S INSTALLATION INSTRUCTIONS INCLUDING INSULATION AND/OR HEAT TRACE. SEE 2/MP3.01.
 - EXTEND EXISTING PLUMBING UTILITIES AS NEEDED TO NEW LAV: 3/4" CW & HW, 2" V, 1-1/2" V. PROVIDE NEW P-TRAP, TRAP ARM, WATER STOP AND SUPPLY.
 - EXTEND EXISTING PLUMBING UTILITIES AS NEEDED TO NEW WATER CLOSET: 1-1/2" CW, 4" S, 2" V. PROVIDE NEW WATER STOP AND SUPPLY.
 - 12x12 DOOR LOUVER BY OTHERS. SEE ARCH PLANS.

MEP COMPONENT ANCHORAGE NOTE

ALL MECHANICAL, PLUMBING, AND ELECTRICAL COMPONENTS SHALL BE ANCHORED AND INSTALLED PER THE DETAILS ON THE DSA APPROVED CONSTRUCTION DOCUMENTS. WHERE NO DETAIL IS INDICATED, THE FOLLOWING COMPONENTS SHALL BE ANCHORED OR BRACED TO MEET THE FORCE AND DISPLACEMENT REQUIREMENTS PRESCRIBED IN THE 2010 CBC, SECTIONS 1615A.1.12 THROUGH 1615A.1.22 AND ASCE 7-05 CHAPTER 6 AND 13.

- ALL PERMANENT EQUIPMENT AND COMPONENTS.
- TEMPORARY OR MOVABLE EQUIPMENT THAT IS PERMANENTLY ATTACHED (e.g. HARD WIRED) TO THE BUILDING UTILITY SERVICES SUCH AS ELECTRICITY, GAS OR WATER.
- MOVABLE EQUIPMENT WHICH IS STATIONED IN ONE PLACE FOR MORE THAN 8 HOURS AND HEAVIER THAN 400 POUNDS ARE REQUIRED TO BE ANCHORED WITH TEMPORARY ATTACHMENTS.

THE ATTACHMENT OF THE FOLLOWING MECHANICAL AND ELECTRICAL COMPONENTS SHALL BE POSITIVELY ATTACHED TO THE STRUCTURE, BUT NEED NOT BE DETAILED ON THE PLANS. THESE COMPONENTS SHALL HAVE FLEXIBLE CONNECTIONS PROVIDED BETWEEN THE COMPONENT AND ASSOCIATED DUCTWORK, PIPING, AND CONDUIT.

- COMPONENTS WEIGHING LESS THAN 400 POUNDS AND HAVE A CENTER OF MASS LOCATED 4 FEET OR LESS ABOVE THE ADJACENT FLOOR OR ROOF LEVEL THAT DIRECTLY SUPPORT THE COMPONENT.
- COMPONENTS WEIGHING LESS THAN 20 POUNDS, OR IN THE CASE OF DISTRIBUTED SYSTEMS, LESS THAN 5 POUNDS PER FOOT, WHICH ARE SUSPENDED FROM A ROOF OR FLOOR OR HUNG FROM A WALL.

FOR THOSE ELEMENTS THAT DO NOT REQUIRE DETAILS ON THE APPROVED DRAWINGS, THE INSTALLATION SHALL BE SUBJECT TO THE APPROVAL OF THE STRUCTURAL ENGINEER OF RECORD AND THE DSA DISTRICT STRUCTURAL ENGINEER. THE PROJECT INSPECTOR WILL VERIFY THAT ALL COMPONENTS AND EQUIPMENT HAVE BEEN ANCHORED IN ACCORDANCE WITH ABOVE REQUIREMENTS.

PIPING, DUCTWORK, AND ELECTRICAL DISTRIBUTION SYSTEM BRACING NOTE

PIPING, DUCTWORK, AND ELECTRICAL DISTRIBUTION SYSTEMS SHALL BE BRACED TO COMPLY WITH THE FORCES AND DISPLACEMENTS PRESCRIBED IN ASCE 7-05 SECTION 13.3 AS DEFINED IN ASCE 7-05 SECTION 13.6.8, 13.6.7, 13.6.5.6, AND 2010 CBC, SECTIONS 1615A.1.20, 1615A.1.21 AND 1615A.1.22.

THE BRACING AND ATTACHMENTS TO THE STRUCTURE SHALL BE DETAILED ON THE APPROVED DRAWINGS OR THEY SHALL COMPLY WITH ONE OF THE OSHPD PRE-APPROVALS (OPA #) AS MODIFIED TO SATISFY ANCHORAGE REQUIREMENTS OF ACI 318, APPENDIX D.

COPIES OF THE MANUAL SHALL BE AVAILABLE ON THE JOBSITE PRIOR TO THE START OF HANGING AND BRACING OF THE PIPE, DUCTWORK, AND ELECTRICAL DISTRIBUTION SYSTEMS.

THE STRUCTURAL ENGINEER OF RECORD SHALL VERIFY THE ADEQUACY OF THE STRUCTURE TO SUPPORT THE HANGER AND BRACE LOADS.

- ### GENERAL PLUMBING & HVAC NOTES
- THE PLANS AND SPECIFICATIONS DESCRIBE THE PLUMBING AND HVAC WORK OF THIS PROJECT. ANY ITEMS MENTIONED IN ONE PART SHALL BE AS BINDING AS THOUGH MENTIONED IN BOTH. PROVIDE THE NECESSARY LABOR, MATERIALS, EQUIPMENT, TOOLS AND SERVICES FOR A COMPLETE FUNCTIONING SYSTEM.
 - PLUMBING AND HVAC LAYOUTS INDICATED ON PLANS ARE DIAGRAMMATIC ONLY. SOME WORK MAY BE SHOWN OFFSET FOR CLARITY. EXACT LOCATION OF EQUIPMENT, DUCTWORK AND PIPES SHALL BE COORDINATED WITH OTHER TRADES.
 - PROVIDE CLEANOUTS PER CPC SECTIONS 707, 719 AND 1101.12.
 - PENETRATIONS THROUGH FIRE RATED ASSEMBLIES SHALL BE PER CBC SECTION 713. FIRE STOP MATERIAL SHALL BE A TESTED ASSEMBLY APPROVED BY THE FIRE MARSHAL. SEE ARCHITECTURAL PLANS FOR LOCATION OF FIRE RATED ASSEMBLIES.
 - THE SEISMIC RESTRAINT OF MECHANICAL EQUIPMENT, DUCTWORK AND PIPES SHALL CONFORM TO 2010 CBC CHAPTER 16A.
 - PROVIDE FRESH AIR INTAKE SEPARATION FROM EXHAUST TERMINATION AND PLUMBING VENT TERMINATION PER CMC SECTION 510.8 AND CPC SECTION 906. COORDINATE WITH OTHER TRADES.

- ### GENERAL PLUMBING DEMOLITION NOTES
- DISCONNECT AND REMOVE EXISTING PLUMBING FIXTURES AS INDICATED ON PLANS. ALL REMOVED PLUMBING FIXTURES ARE TO BE PROTECTED AND STORED FOR POSSIBLE FUTURE USE.
 - CAP ALL COLD WATER, HOT WATER, SOIL, WASTE, VENT AND GAS LINES BELOW FLOOR OR ABOVE CEILING.
 - ALL PLUMBING UTILITIES TO REMAIN IN SERVICE DURING DEMOLITION. COORDINATE ALL SHUT-DOWNS WITH MAINTENANCE STAFF TO MINIMIZE INTERRUPTION OF SERVICE.
 - ALL EXISTING RISERS, DROPS, MAINS AND BRANCHES FOR EACH UTILITY TO REMAIN.
 - SEE ARCHITECTURAL DEMOLITION PLANS FOR FURTHER DETAILS AND NOTES.

Ownership of Documents
This document, the ideas and designs incorporated herein, as an instrument of Professional Service is the property of Integrated Designs by SOMAM Inc. and is not to be used, in whole or in part for any other project without written authorization.
© COPYRIGHT 2012

Integrated designs by SOMAM, Inc.
ARCHITECTURE - ENGINEERING - INTERIOR DESIGN - CONSTRUCTION MANAGEMENT
6011 N. Fresno, Suite 130 - Fresno, California 93710
Phone (559) 438-0881 Fax (559) 438-0887 E-mail: design@somam.com
www.integrateddesigns.com

Rev. Date	Rev. Description

MECHANICAL PLAN
MT. VERNON ELEMENTARY SCHOOL
KITCHEN ADDITION
BAKERSFIELD CITY SCHOOL DISTRICT
2161 POTOMAC AVENUE BAKERSFIELD CA.

Project Name & Address:
Sheet Title:
Issue Date: 07/20/12
Date: 07/31/12
Designer:
DR:
PC: CJM

Agency Approval Stamp:
FILE # 15-6
IDENTIFICATION STAMP
DIV. OF THE STATE ARCHITECT
OFFICE OF REGULATION SERVICES
03-114521
AC FLS SS
DATE
TRACKING #: 63321-118

Stamp(s):
Professional Engineer
Mechanical
State of California
32712
Exp. 6-30-14

Job No.: 3990
Sheet No.: MP2.01
Release: -