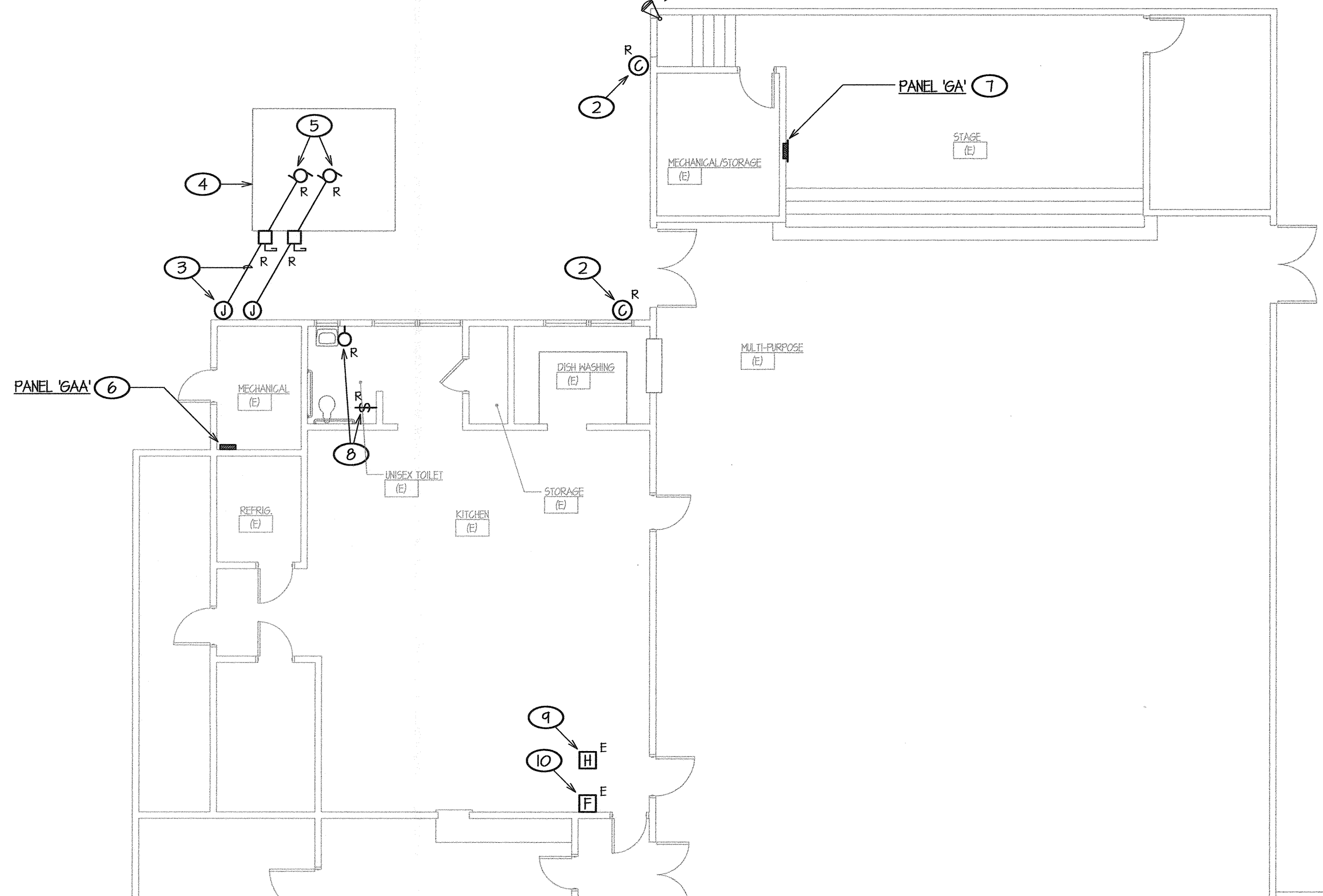


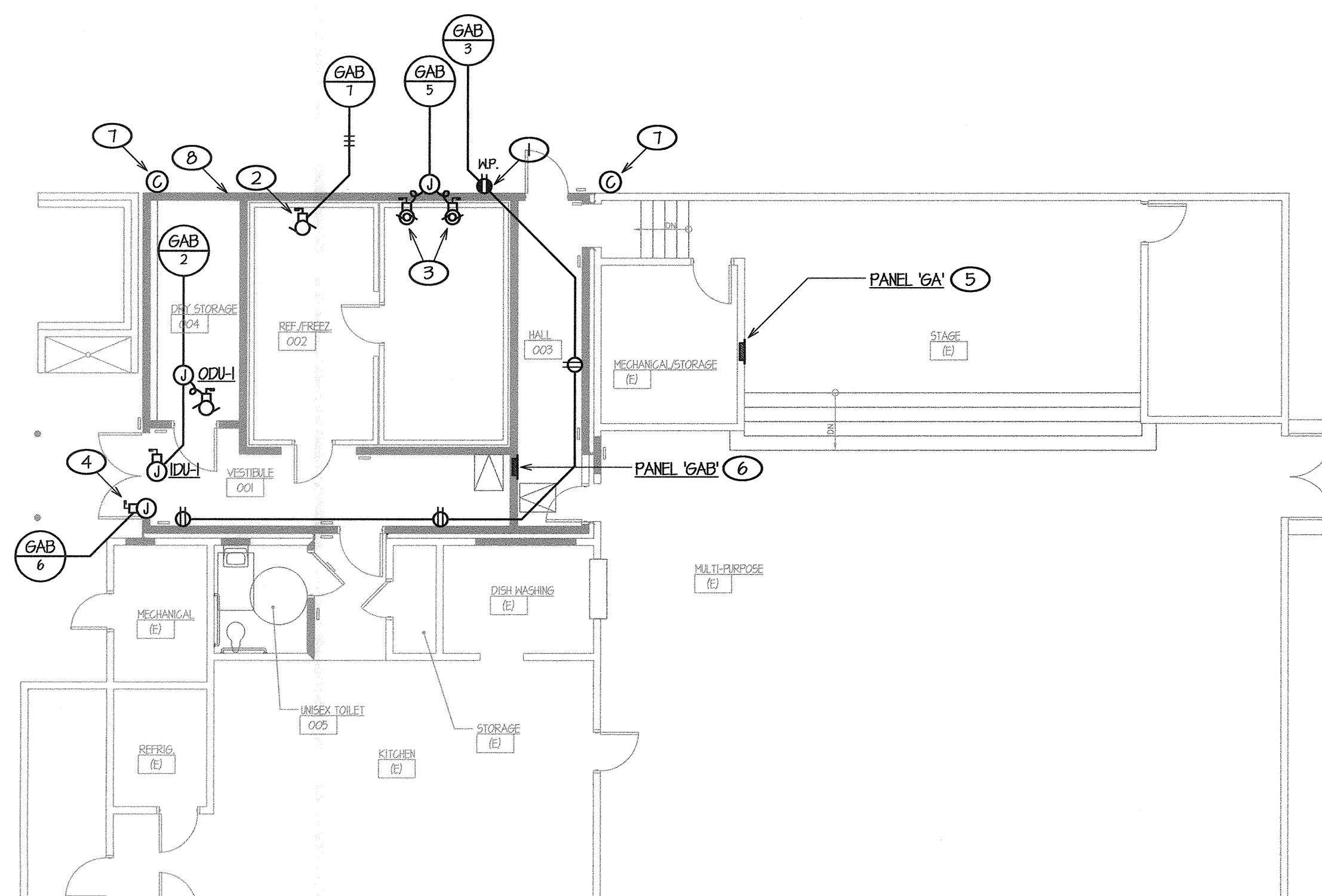
# ELECTRICAL DEMOLITION PLAN

SCALE: 1/8"=1'-0"



# POWER PLAN

SCALE: 1/8"=1'-0"



## ELECTRICAL DEMOLITION PLAN NOTES

- 1 EXISTING EXTERIOR LIGHTING FIXTURE, ATTACHED WITH AN 'E' SUBSCRIPT, TO REMAIN. EXTEND AND CONNECT EXISTING CIRCUIT CONDUCTORS TO NEW EXTERIOR LIGHTING FIXTURES PER LIGHTING PLAN, SHEET E3.01. CONTRACTOR SHALL FIELD VERIFY ALL.
- 2 EXISTING EXTERIOR SECURITY CAMERA, ATTACHED WITH AN 'R' SUBSCRIPT, TO BE RELOCATED COMPLETE PER POWER PLAN, THIS SHEET. REMOVE ANY EMPTY, EXPOSED JUNCTION BOXES) AND CONDUIT COMPLETE. REROUTE, EXTEND AND RECONNECT EXISTING CABLES AS REQUIRED, CONTRACTOR SHALL FIELD VERIFY ALL.
- 3 EXISTING JUNCTION BOXES AND SURFACE MOUNTED FEEDER CURRENTLY SERVING EXISTING REFRIGERATION UNIT BEING REMOVED TO BE REMOVED COMPLETE, TYPICAL OF TWO. REMOVAL OF REFRIGERATION UNIT BY OTHERS. REFER TO ITEM 4 BELOW FOR COORDINATION/REFERENCE.
- 4 EXISTING REFRIGERATION UNIT TO BE REMOVED COMPLETE. DE-ENERGIZE EXISTING CIRCUIT BREAKER(S) SERVING UNIT MECHANICAL EQUIPMENT, PULL OUT WIRING MADE IDLE BY EQUIPMENT REMOVAL COMPLETE TO SERVING PANEL 'GAA' AND REMOVE ALL EMPTY, EXPOSED JUNCTION BOXES) AND CONDUIT COMPLETE.
- 5 DISCONNECT ELECTRICAL SERVICE COMPLETE FROM EXISTING ROOF MOUNTED REFRIGERATION COMPRESSOR EQUIPMENT AND ALL ASSOCIATED MECHANICAL DISTRIBUTION EQUIPMENT BEING REMOVED (MECHANICAL EQUIPMENT, DISCONNECT AND/OR CONTROL DEVICES), ETC. REMOVAL BY OTHERS). PULL OUT WIRING MADE IDLE BY EQUIPMENT REMOVAL COMPLETE TO SERVING PANEL AND REMOVE ANY EMPTY, EXPOSED JUNCTION BOXES) AND CONDUIT COMPLETE. NOTE: EVERY DEVICE REQUIRING REMOVAL MAY NOT BE SHOWN ON THIS DRAWING, CONTRACTOR SHALL FIELD VERIFY ALL.
- 6 EXISTING PANEL TO REMAIN, NO WORK REQUIRED. SHOWN FOR CLARITY ONLY.
- 7 EXISTING PANEL TO BE REMAIN. PROVIDE NEW SUB-FEED CIRCUIT BREAKER PER PLANS FOR NEW ELECTRICAL PANEL SERVING KITCHEN ADDITION. REFER TO GENERAL NOTES, SHEET E1.00, POWER PLAN, THIS SHEET, SINGLE LINE DIAGRAM, I/E4.01 AND PANEL SCHEDULES, SHEET E4.01 FOR COORDINATION/REFERENCE.
- 8 REMOVE EXISTING WALL MOUNTED INCANDESCENT LIGHT FIXTURE AND ASSOCIATED SWITCH AND PROVIDE NEW PER LIGHTING PLAN, SHEET E3.01.
- 9 EXISTING AUDIBLE NOTIFICATION DEVICE TO REMAIN AND BE RECONNECTED PER FIRE ALARM PLAN, SHEET E3.01. REFER TO FIRE ALARM SINGLE LINE DIAGRAM, I/E5.01 FOR COORDINATION/REFERENCE.
- 10 EXISTING MANUAL PULL STATION TO REMAIN, NO WORK REQUIRED.

## POWER PLAN NOTES

- 1 G.F.I. RECEPTACLE WITH H.P., COVER PLATE, PASS AND SEYMOUR #NUGIOS OR APPROVED EQUAL. TYPICAL FOR ALL EXTERIOR RECEPTACLES.
- 2 CONNECT ROOF MOUNTED REFRIGERATOR/FREEZER CONDENSING UNIT POWER PER MANUFACTURER'S WRITTEN INSTRUCTIONS. COORDINATE THIS WORK WITH EQUIPMENT SUPPLIER PRIOR TO COMMENCING ROUGH-IN.
- 3 CONNECT ROOF MOUNTED COOLING FAN POWER PER MANUFACTURER'S WRITTEN INSTRUCTIONS. COORDINATE THIS WORK WITH EQUIPMENT SUPPLIER PRIOR TO COMMENCING ROUGH-IN.
- 4 CONNECT FLY FAN POWER VIA INTERLOCK SWITCH. INTERLOCK SWITCH PROVIDED AND INSTALLED BY DIVISION 15. REFER TO MECHANICAL DRAWINGS FOR COORDINATION/REFERENCE.
- 5 EXISTING PANEL TO REMAIN. REFER TO SINGLE LINE DIAGRAM, I/E4.01 FOR COORDINATION/REFERENCE.
- 6 PROVIDE 20BY120V, 3PH, 4W POWER AND LIGHTING PANEL PER SPECIFICATIONS, INSTALL PER 2/E4.01 AND CONNECT PER SINGLE LINE DIAGRAM, I/E4.01. REFER TO PANEL SCHEDULES, SHEET E4.01 FOR COORDINATION/REFERENCE.
- 7 NEW LOCATION FOR EXISTING SECURITY CAMERA. COORDINATE EXACT LOCATION AND CONNECTION REQUIREMENTS WITH OWNER'S INTRUSION ALARM VENDOR. CONTRACTOR SHALL FIELD VERIFY ALL.
- 8 INFILL DENOTES 1-HOUR FIRE RATED WALL ASSEMBLY. WHERE OUTLETS OR CONDUITS PENETRATE FIRE RATED ASSEMBLIES, INSTALLATION SHALL PROVIDE REQUIRED 24" MINIMUM SEPARATION FOR OUTLETS PER 3/E5.01, AND SEAL PENETRATIONS PER 4/E5.01.

**WE**  
**WATERS ENGINEERING, INC.**  
 Consulting Electrical Engineer  
 P.O. BOX 680  
 Vista, California 92083-0680  
 Telephone (619) 733-4133  
 Facsimile (619) 733-4125  
 E-mail: waterseng@comcast.net

Ownership of Documents  
 This document, the ideas and designs incorporated herein, as an instrument of Professional Service is the property of Integrated Designs by SOMAM Inc. and is not to be used, in whole or in part for any other project without written authorization.  
 © COPYRIGHT 2012

**integrated designs** by SOMAM, Inc.  
 ARCHITECTURE • INTERIOR DESIGN • CONSTRUCTION MANAGEMENT  
 ARCHITECTURE • ENGINEERING • INTERIOR DESIGN • CONSTRUCTION MANAGEMENT  
 601 N. Fresno, Suite 130 - Fresno, California 93710  
 Phone (559) 439-9881 Fax (559) 439-9887 E-Mail: design@somam.com  
 www.integrateddesigns.com

Revision	Revision Description	Rev. Date

**ELECTRICAL DEMOLITION AND POWER PLANS**  
**MT. VERNON ELEMENTARY SCHOOL KITCHEN ADDITION**  
 BAKERSFIELD CITY SCHOOL DISTRICT  
 2161 POPTOMAC AVENUE BAKERSFIELD CA,

Issue Date: 07/19/12  
 Date: 07/19/12  
 Designer: VWW  
 DR: VWW  
 PC: CJM

Issue Title: ELECTRICAL DEMOLITION AND POWER PLANS

Issue Date: 07/19/12  
 Date: 07/19/12  
 Designer: VWW  
 DR: VWW  
 PC: CJM

File #15-6  
 IDENTIFICATION STAMP  
 DIV. OF THE STATE ARCHITECT  
 OFFICE OF REGULATION SERVICES  
 03-114521  
 AC, FLS, SS  
 DATE 8/11/12

TRACKING #: - - -

Stamp(s):

Job No.: **3990**  
 Sheet No.: **E2.01**  
 Release: -