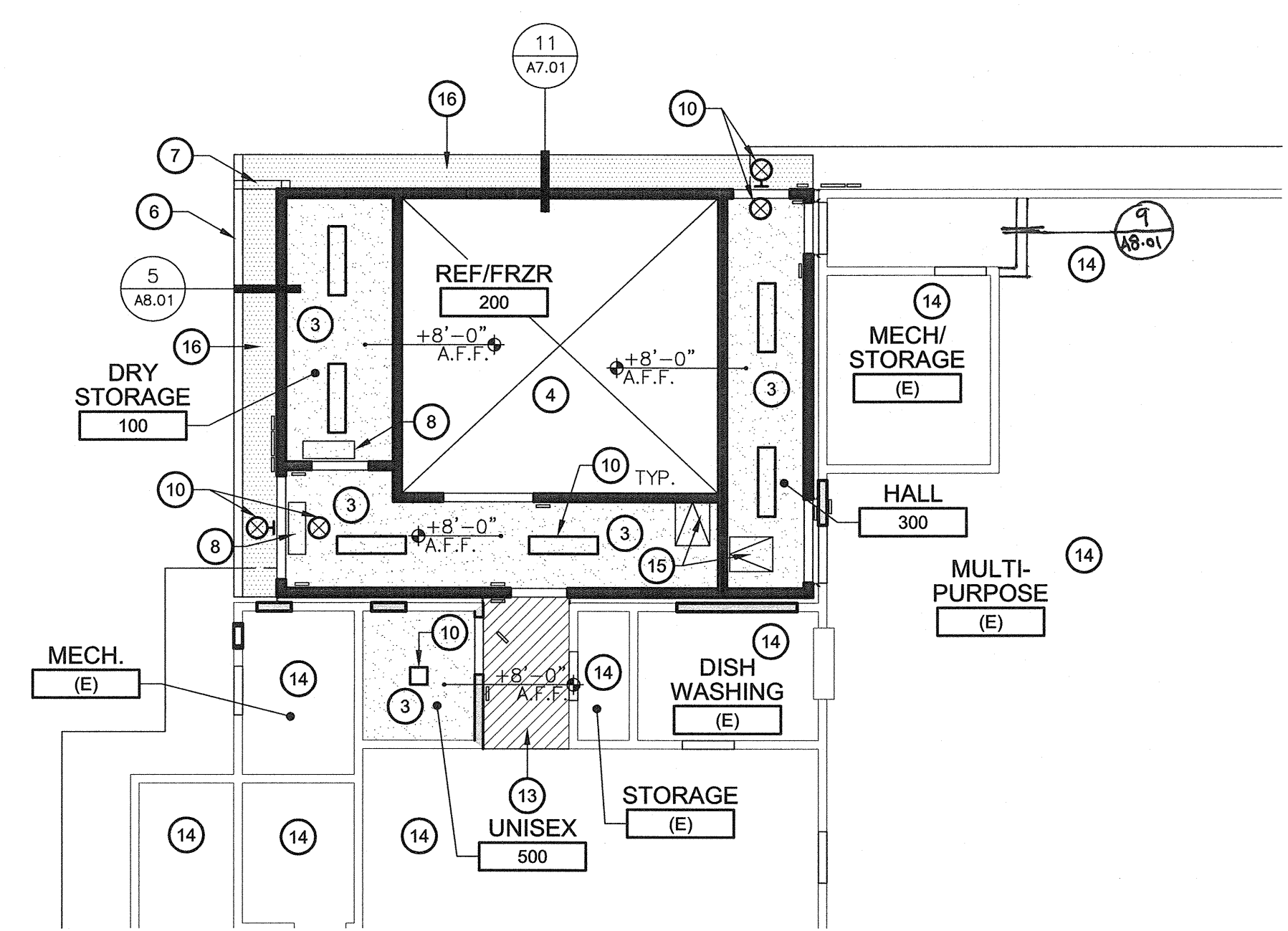


1 MECH. PLATFORM DETAIL
SCALE: 1" = 1'-0"

ROOF PLAN
KITCHEN ADDITION

SCALE: 1/8" = 1'-0"



REFLECTED CEILING PLAN
KITCHEN ADDITION

SCALE: 1/8" = 1'-0"

KEY NOTES

- EXISTING ROOFING TO REMAIN
- DASHED LINE INDICATES EXISTING BUILDING EXTERIOR WALL OUTLINE (SHOWN FOR CLARITY).
- NEW GYP. BOARD CEILING - SEE FINISH SCHEDULE & SPECS. FOR ADDITIONAL INFORMATION
- OPEN TO STRUCTURE ABOVE
- NEW EXHAUST FAN ON ROOF. SEE MECH. DWGS.
- NEW SHEET METAL DOWN SPOUT.
- NEW MECH. UNIT - SEE MECH. DWGS.
- NEW FLY FAN - SEE MECH. DWGS.
- NEW LIGHT FIXTURE - SEE ELECT. DWGS.
- NEW ROOF CURB.
- NEW CLASS "A" COMPOSITE SHINGLE ROOFING.
- PATCH & REPAIR CEILING PRIME & PAINT.
- NO WORK IN THIS ROOM U.O.N.
- NEW 22"x30" CEILING ACCESS DOOR PER DETAIL 3/A8.01
- CEMENT PLASTER EAVE - SEE DETAILS 11/A7.01 AND 5/A8.01

GENERAL NOTES

- VERIFY ALL DIMENSIONS AND QUANTITIES IN FIELD.
- IF EXISTING MATERIALS OR ASSEMBLES ARE DISTURBED BY THE WORK UNDER THIS CONTRACT, THEY SHALL BE REPLACED IN KIND AND FINISH TO MATCH ADJACENT SURFACE.
- ALL CONDUITS SHALL BE SUPPORTED ON NEW REDWOOD SLEEPERS IN ACCORDANCE CONDUIT SUPPORT DETAILS
- ROOFING COLOR TO BE SELECTED BY THE ARCHITECT
- EXTEND GYPSUM BOARD TO 6" ABOVE CEILING EXCEPT AT 1 HR. RATED PARTITIONS (U.O.N.)
- INSTALL A 24"x36" CEILING ACCESS PANEL IN EACH ROOM ENCLOSED WITH 1 HR. RATED PARTITIONS WITH GYPSUM BOARD OR PLASTER CEILINGS.
- 1 HR. RATED ENCLOSURE WALLS SHALL EXTEND TO BOTTOM OF ROOF STRUCTURE OR RATED CEILING.
- ALL JOINTS AND PENETRATIONS THROUGH RATED WALLS AND CEILINGS SHALL BE SEALED WITH FIREPROOFING, FIRE SAFING, OR FIRE SEALANT AS SPECIFIED. SEE SHEETS REFERENCE CORRECT SHEET.

LEGEND

- HATCHED AREAS INDICATES EXISTING COMP. SHINGLE ROOFING TO REMAIN
- HATCHED AREAS INDICATE NEW COMP. SHINGLE ROOFING SYSTEM - SEE SPECS
- (N) SURFACE MOUNTED 1x4 LIGHT FIXTURE - SEE ELECTRICAL
- (N) WALL MOUNTED LIGHT FIXTURE - SEE ELECTRICAL
- (N) EMERGENCY EXIT LIGHT FIXTURE - SEE ELECTRICAL

Ownership of Documents
This document, the ideas and designs incorporated herein, as an instrument of Professional Service is the property of Integrated Designs by SOMAM Inc. and is not to be used, in whole or in part for any other project without written authorization.
© COPYRIGHT 2012

integrated designs by SOMAM, Inc.
ARCHITECTURE • ENGINEERING • INTERIOR DESIGN • CONSTRUCTION MANAGEMENT
601 N. Fresno, Suite 130 - Fresno, California 93710
Phone (559) 438-0881 Fax (559) 438-0887 E-mail: design@somam.com
www.integrateddesigns.com

Revision	Date	Description

ROOF PLAN & REFLECTED CEILING PLAN
Project Name & Address:
MT. VERNON ELEMENTARY SCHOOL KITCHEN ADDITION
BAKERSFIELD CITY SCHOOL DISTRICT
2161 POTOMAC AVENUE BAKERSFIELD CA, 93311

Sheet Title:
ROOF PLAN & REFLECTED CEILING PLAN

Issue Date: 07/20/12
Date: 07/31/12
Designer: [Signature]
DR: [Signature]
PC: CJM

Agency Approval Stamp:
FILE # 15-6
IDENTIFICATION STAMP
DIV. OF THE STATE ARCHITECT
OFFICE OF REGULATION SERVICES
03-114521
AC [Signature]
DATE 8/1/12
TRACKING # 63321-118

Stamp(s):

Job No.: **3990**

Sheet No.: **A4.01**

Release: -