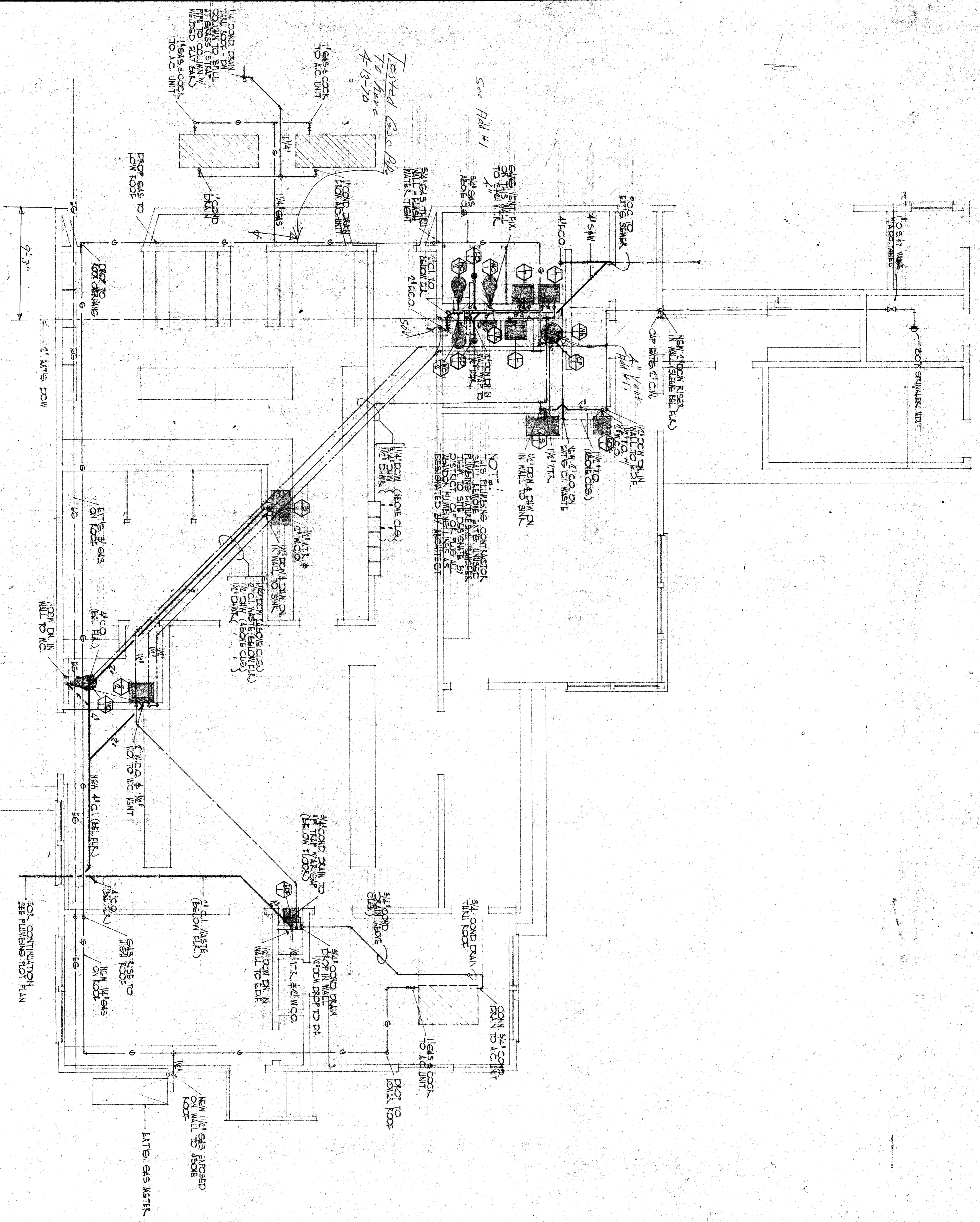


PLUMBING FLOOR PLAN

1/4" = 1'-0"



NOTE:
 THIS PLUMBING CONTRACTOR
 SHALL BE RESPONSIBLE FOR
 OBTAINING ALL NECESSARY
 PERMITS AND INSPECTIONS
 FROM THE LOCAL HEALTH
 DISTRICT AND FIRE DEPARTMENT.
 ALL WORK SHALL BE AS
 SPECIFIED BY ARCHITECT.

TESTED BS-C-BL
 TO HAVE
 4-13-70

FOR CONTINUATION
 SEE PLUMBING FLOOR PLAN

③ SHUT-OFF VALVE IN YD BOX DETAIL NO SCALE

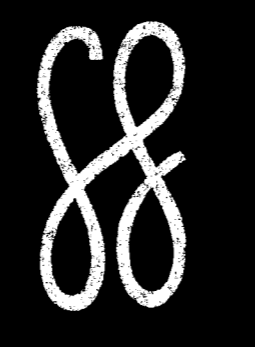
① CLEANOUT TO GARD DETAIL NO SCALE

STATE OF CALIFORNIA - DEPARTMENT OF GENERAL SERVICES
 OFFICE OF ARCHITECTURE AND CONSTRUCTION

82802 APPROVED JAN 13 1970

APPROVED
 STATE FIRE MARSHAL
 STATE OF CALIFORNIA
 DATE JAN 13 1970
 BY *[Signature]*

PLUMBING PLAN & DETAILS
 ADMINISTRATION REHABILITATION
 MT. VERNON SCHOOL
 BAKERSFIELD CITY SCHOOL DISTRICT
 BAKERSFIELD, KERN COUNTY, CALIF.



FRAPWELL AND GHEZZI
ARCHITECTS A. I. A.
 P. O. BOX 2022 PHONE 324-3441
 1717 - 28th STREET BAKERSFIELD, CALIF. 93303

DRAWN BY NICHOLAS HOLLAND
 DATE NOV. 24 69

CHECK AND VERIFY ALL DIMENSIONS AND CONDITIONS AT THE JOB SITE BEFORE PROCEEDING WITH THE WORK. REPORT ANY DISCREPANCIES TO THE ARCHITECT

APPROVED BY
 BOARD OF EDUCATION
 BAKERSFIELD CITY SCHOOL DISTRICT
 DATE JAN 13 1970
 BY *[Signature]*
 SUPERINTENDENT OF SCHOOLS AND
 EXECUTIVE OFFICER

E. H. WILKINSON - Mechanical Engr.
 and ASSOCIATES
 12 Monterey St. - 327-2845
 Bakersfield, California 93305
[Signature]
 ME 3329

SHEET 2 OF 2 SHEETS
 JOB NO. 69 107 R