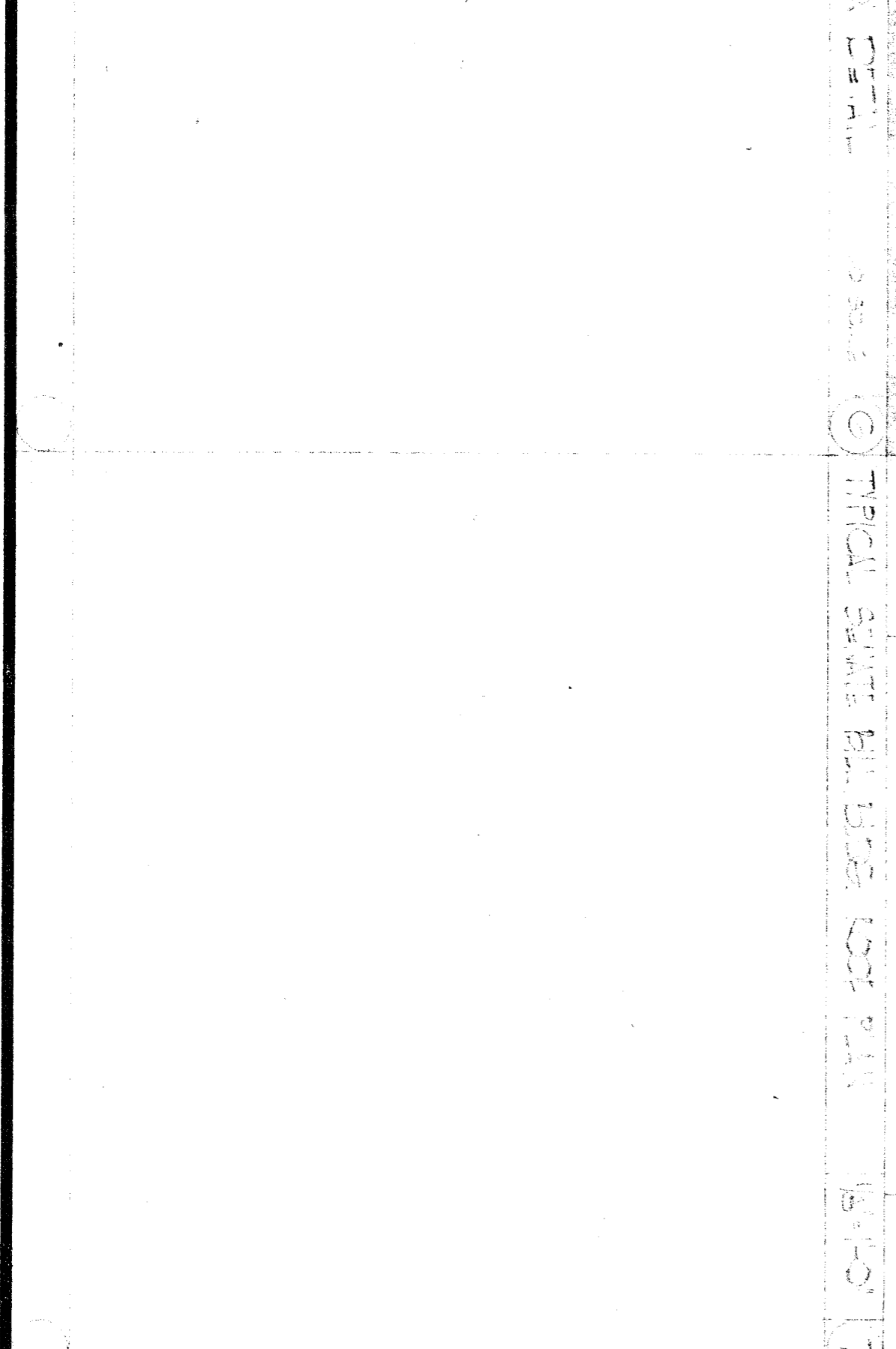
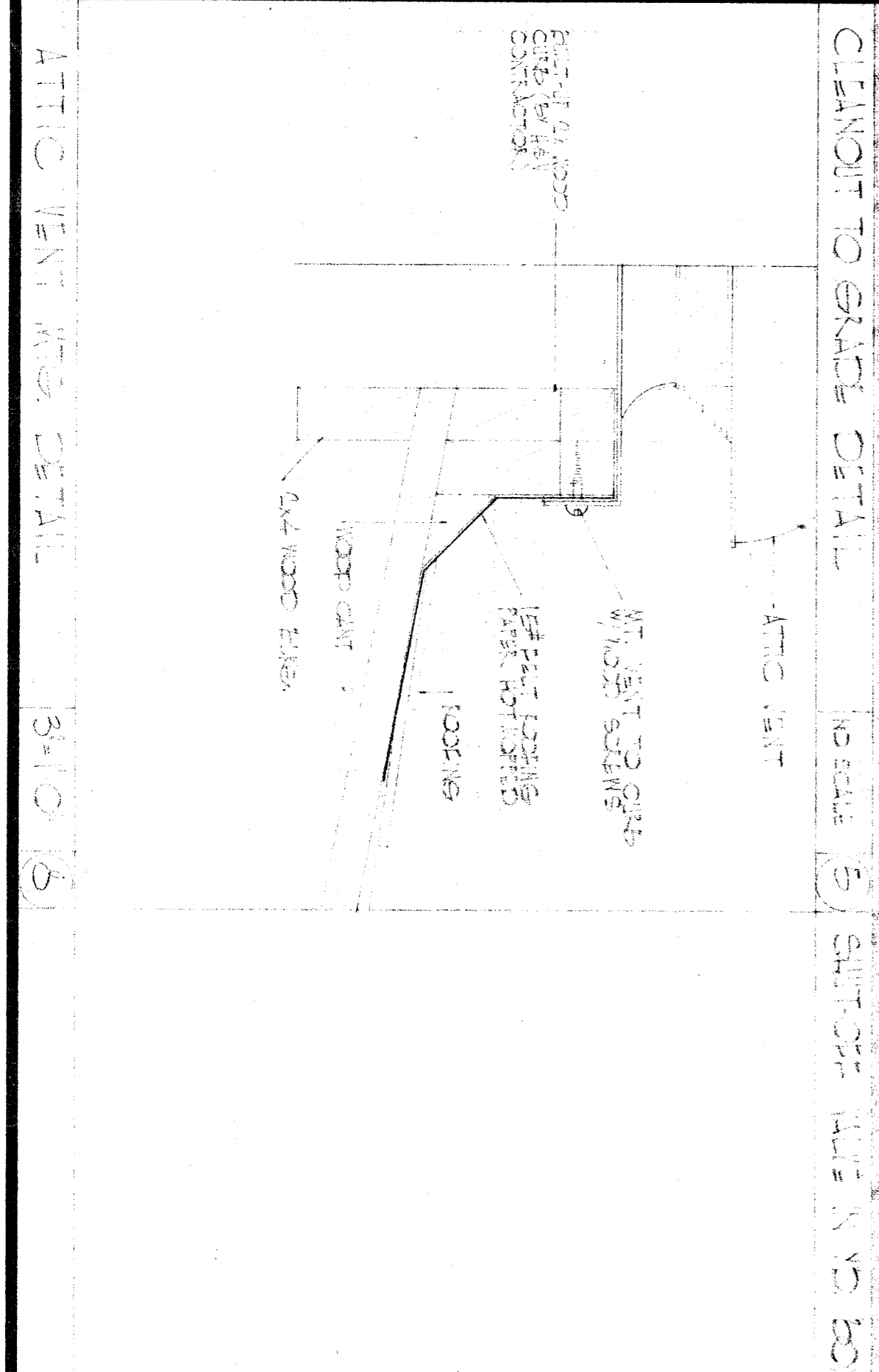
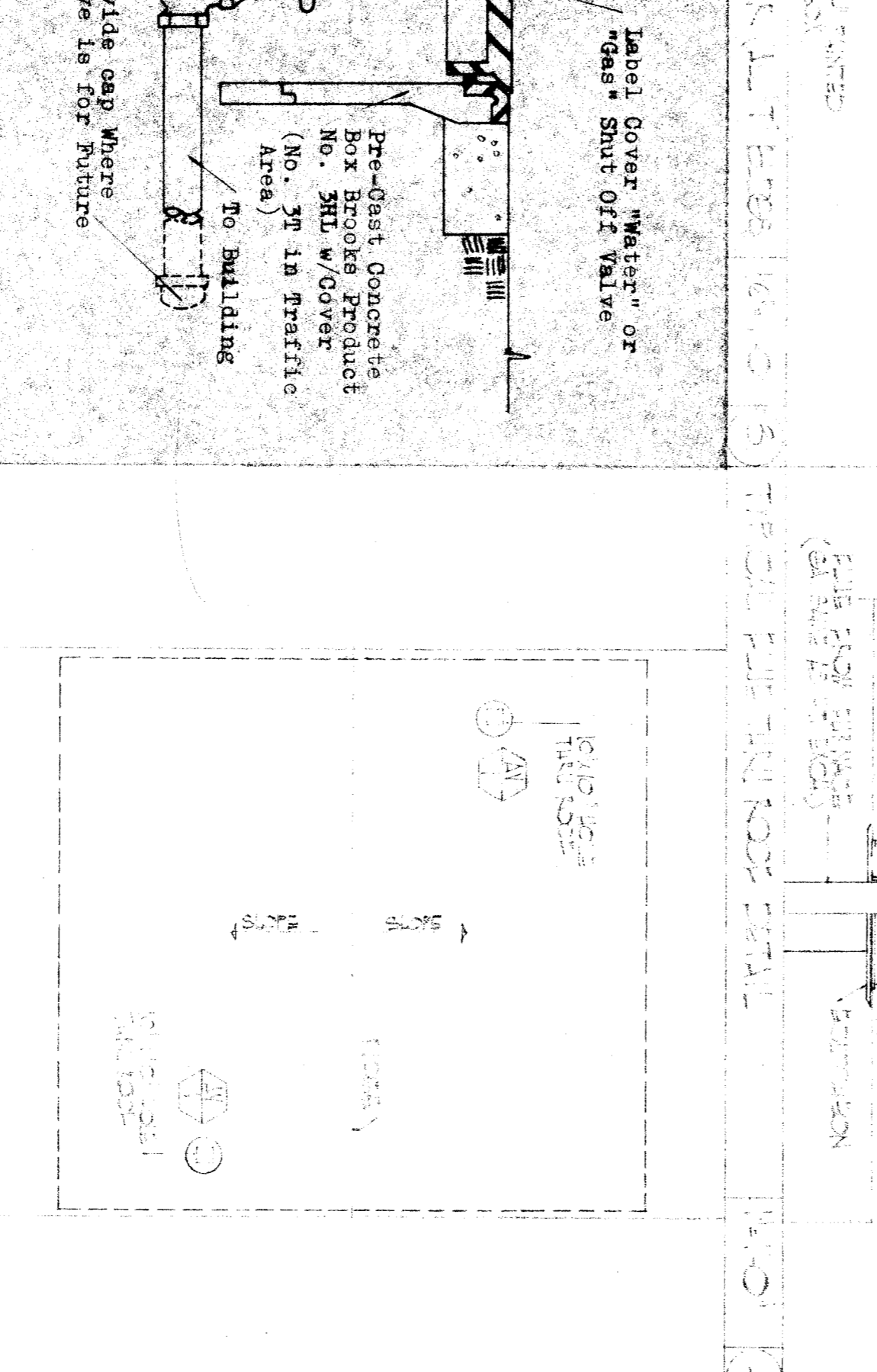
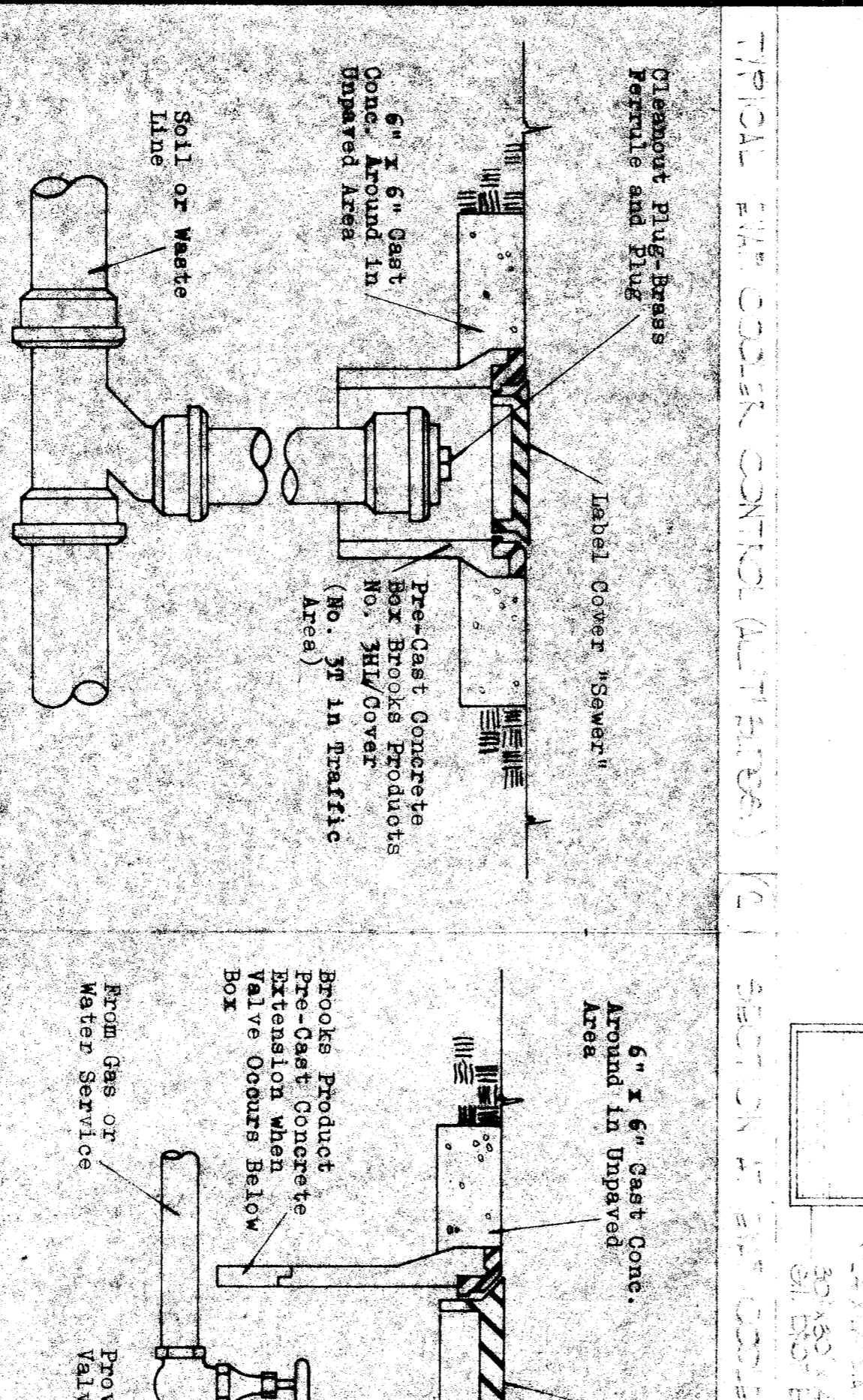
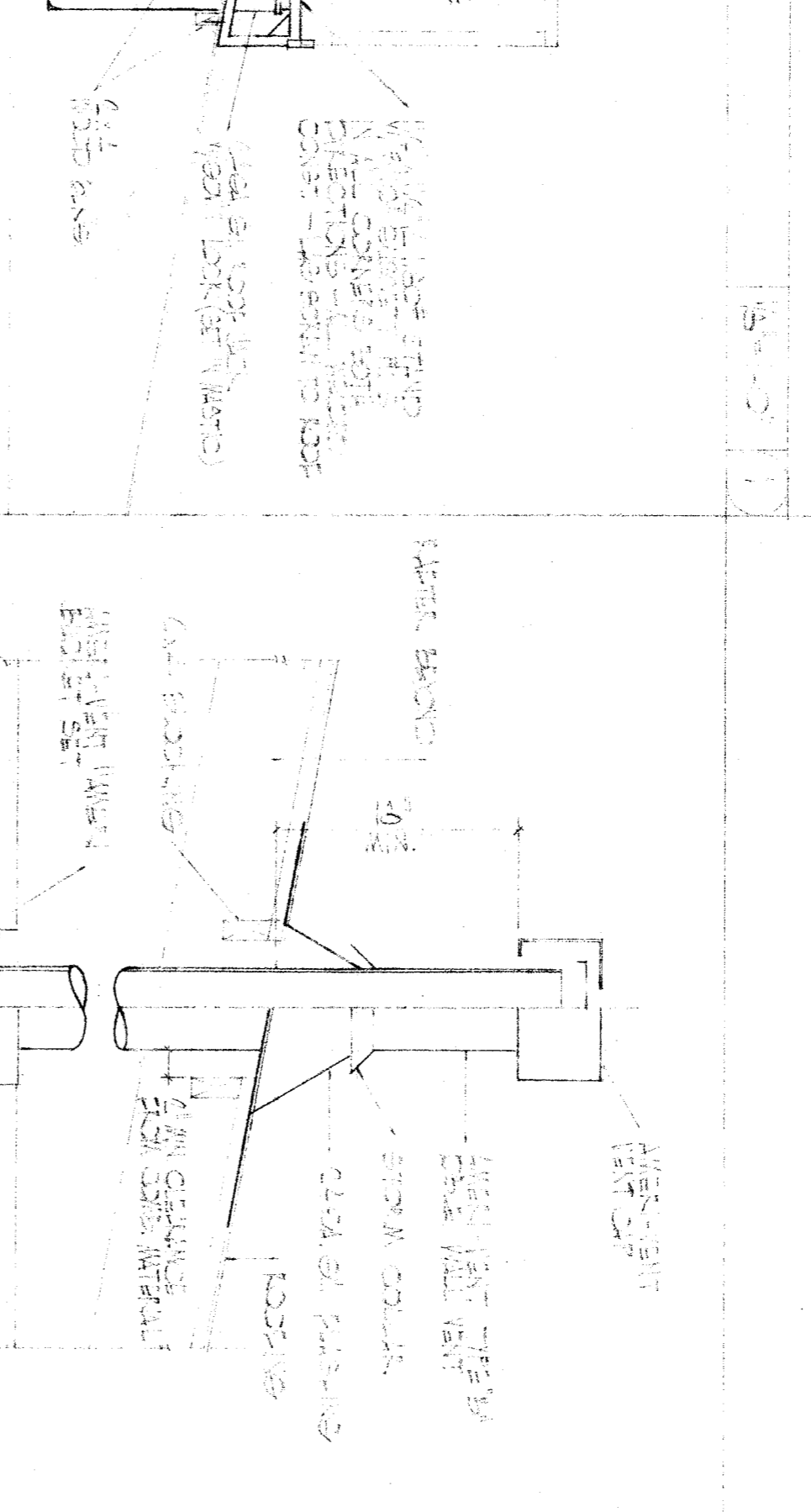
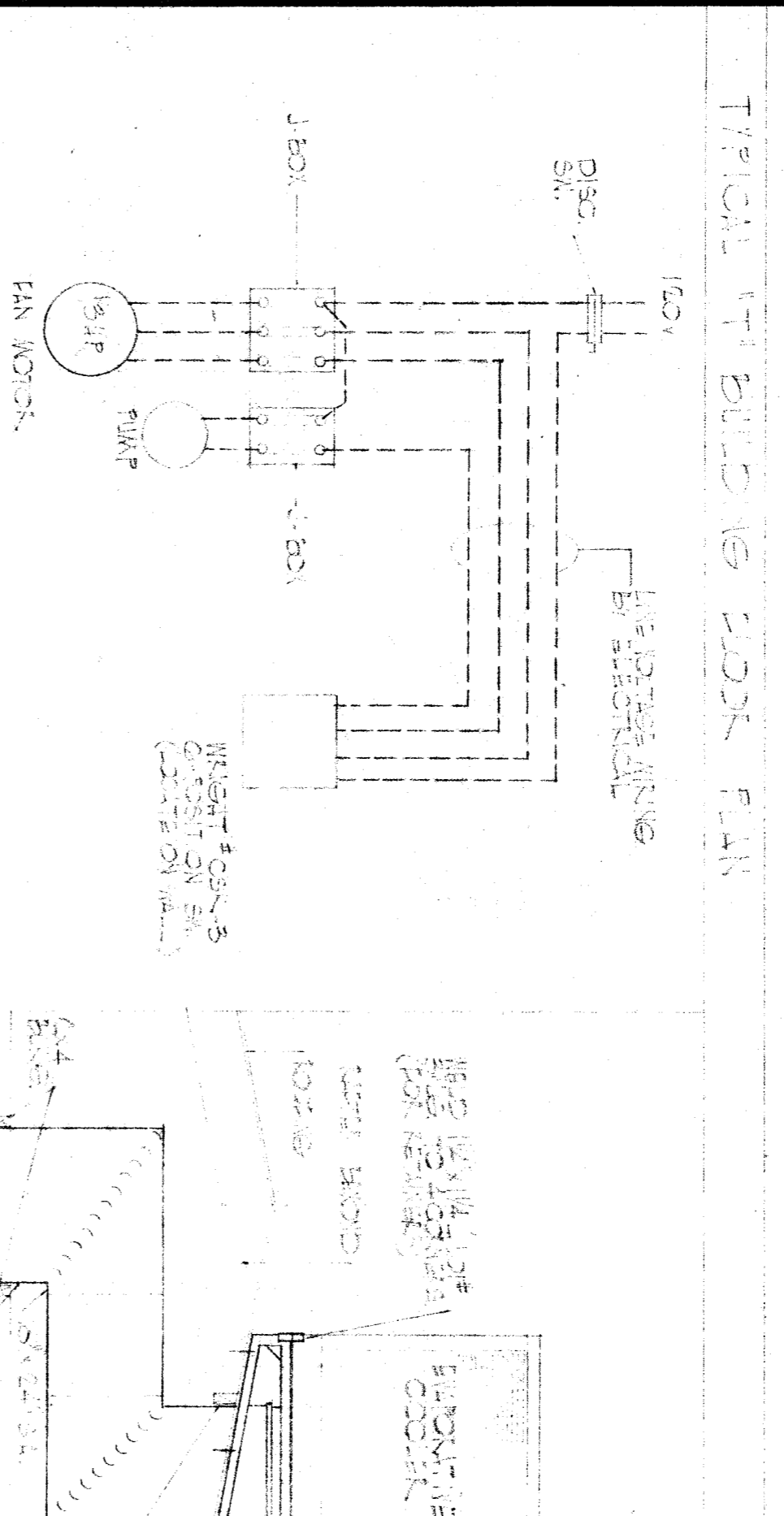


EQUIPMENT SCHEDULE

1. AIRFLOW CONTROL VALVE (AFCV) - 1000000000
 2. BALANCING DAMPER (B.D.) - 1000000000
 3. CHILLED WATER RETURN (C.W.R.) - 1000000000
 4. CHILLED WATER SUPPLY (C.W.S.) - 1000000000
 5. CONDENSATE (C.O.) - 1000000000
 6. CONDENSATE (C.O.) - 1000000000
 7. COMBINATION WAST AND VENT (C.O.V.) - 1000000000
 8. DOMESTIC COLD WATER (D.C.W.) - 1000000000
 9. DOWNSTREAM HOT WATER RETURN (D.H.W.R.) - 1000000000
 10. DOWNSTREAM TEMPERED WATER (D.T.W.) - 1000000000
 11. EXHAUST FAN (E.F.) - 1000000000
 12. FINE EXTINGUISHER (F.E.) - 1000000000
 13. FINE HOSE CABINET (F.H.C.) - 1000000000
 14. FLOOR SINK (F.S.) - 1000000000
 15. FLOOR THRU ROOF (F.T.R.) - 1000000000
 16. GALVANIZED (GAL.) - 1000000000
 17. GAS AND WATER RETURN (G.A.W.R.) - 1000000000
 18. HEATING HOT WATER SUPPLY (H.H.W.S.) - 1000000000
 19. INVERT ELEVATION (I.E.) - 1000000000



LEGEND			
SYMBOL	ABBREVIATION	DESCRIPTION	KEY OPERATED
⊕	A.P.	ACCESS PANEL	KEY OPERATED
⊕	BYPASS	BYPASS	KEY OPERATED
⊕	B.D.	BALANCING DAMPER	KEY OPERATED
⊕	C.W.R.	CHILLED WATER RETURN	KEY OPERATED
⊕	C.W.S.	CHILLED WATER SUPPLY	KEY OPERATED
⊕	C.O.	CONDENSATE	KEY OPERATED
⊕	C.O.	CONDENSATE	KEY OPERATED
⊕	C.O.V.	COMBINATION WAST AND VENT	KEY OPERATED
⊕	D.C.W.	DOMESTIC COLD WATER	KEY OPERATED
⊕	D.H.W.R.	DOWNSTREAM HOT WATER RETURN	KEY OPERATED
⊕	D.T.W.	DOWNSTREAM TEMPERED WATER	KEY OPERATED
⊕	D.S.	DOWNSTREAM	KEY OPERATED
⊕	E.F.	EXHAUST FAN	KEY OPERATED
⊕	E.F.	EXHAUST FAN	KEY OPERATED
⊕	F.E.	FINE EXTINGUISHER	KEY OPERATED
⊕	F.H.C.	FINE HOSE CABINET	KEY OPERATED
⊕	F.S.	FLOOR SINK	KEY OPERATED
⊕	F.T.R.	FLOOR THRU ROOF	KEY OPERATED
⊕	GAL.	GALVANIZED	KEY OPERATED
⊕	G.A.W.R.	GAS AND WATER RETURN	KEY OPERATED
⊕	H.H.W.S.	HEATING HOT WATER SUPPLY	KEY OPERATED
⊕	I.E.	INVERT ELEVATION	KEY OPERATED
⊕	K.O.	KEY OPERATED	KEY OPERATED
⊕	L.A.V.	LAUNDRY VENT	KEY OPERATED
⊕	L.P.B.	LIQUID PETROLEUM GAS	KEY OPERATED
⊕	N.C.	NORMAL	KEY OPERATED
⊕	N.O.	NORMALLY OPEN	KEY OPERATED
⊕	O.S.A.	OUTSIDE AIR	KEY OPERATED
⊕	O.B.D.	OUTSIDE AIR BLADE DAMPER	KEY OPERATED
⊕	P.O.C.	POINT OF CONNECTION	KEY OPERATED
⊕	R.A.	RETURN AIR	KEY OPERATED
⊕	R.R.	RETURN REGISTER	KEY OPERATED
⊕	R.R.	RETURN REGISTER	KEY OPERATED
⊕	R.G.	RELIEF GRILLE	KEY OPERATED
⊕	S.A.	SUPPLY AIR	KEY OPERATED
⊕	S.A.W.	SUPPLY AIR AND WATER	KEY OPERATED
⊕	S.O.V.	SHUT OFF VALVE	KEY OPERATED
⊕	S.T.	TEMPERATURE	KEY OPERATED
⊕	S.T.V.	TEMPERATURE	KEY OPERATED
⊕	U.R.	URINAL	KEY OPERATED
⊕	V.	VENT	KEY OPERATED
⊕	V.D.	VOLUME DAMPER	KEY OPERATED
⊕	V.T.R.	VENT THRU ROOF	KEY OPERATED
⊕	V.O.	VENT OFFSET	KEY OPERATED
⊕	W.	WATER CLOSET	KEY OPERATED
⊕	W.C.	WATER CLOSET	KEY OPERATED
⊕	W.	WATER CLOSET	KEY OPERATED
⊕	Y.B.	YARD BOX	KEY OPERATED

GENERAL NOTES

1. ALL BUILDINGS SHALL BE PROVIDED WITH THE NECESSARY EQUIPMENT AS SHOWN ON THIS PLAN AND IN THE SCHEDULE.

2. THE CONTRACTOR SHALL BE RESPONSIBLE FOR THE PROPER INSTALLATION OF ALL EQUIPMENT AND FOR THE PROTECTION OF ALL EXISTING UTILITIES.

3. ALL EQUIPMENT SHALL BE INSTALLED IN ACCORDANCE WITH THE MANUFACTURER'S INSTRUCTIONS AND THE applicable codes.

4. THE CONTRACTOR SHALL BE RESPONSIBLE FOR THE PROPER SELECTION AND INSTALLATION OF ALL EQUIPMENT AND FOR THE PROTECTION OF ALL EXISTING UTILITIES.

5. ALL EQUIPMENT SHALL BE INSTALLED IN ACCORDANCE WITH THE MANUFACTURER'S INSTRUCTIONS AND THE applicable codes.