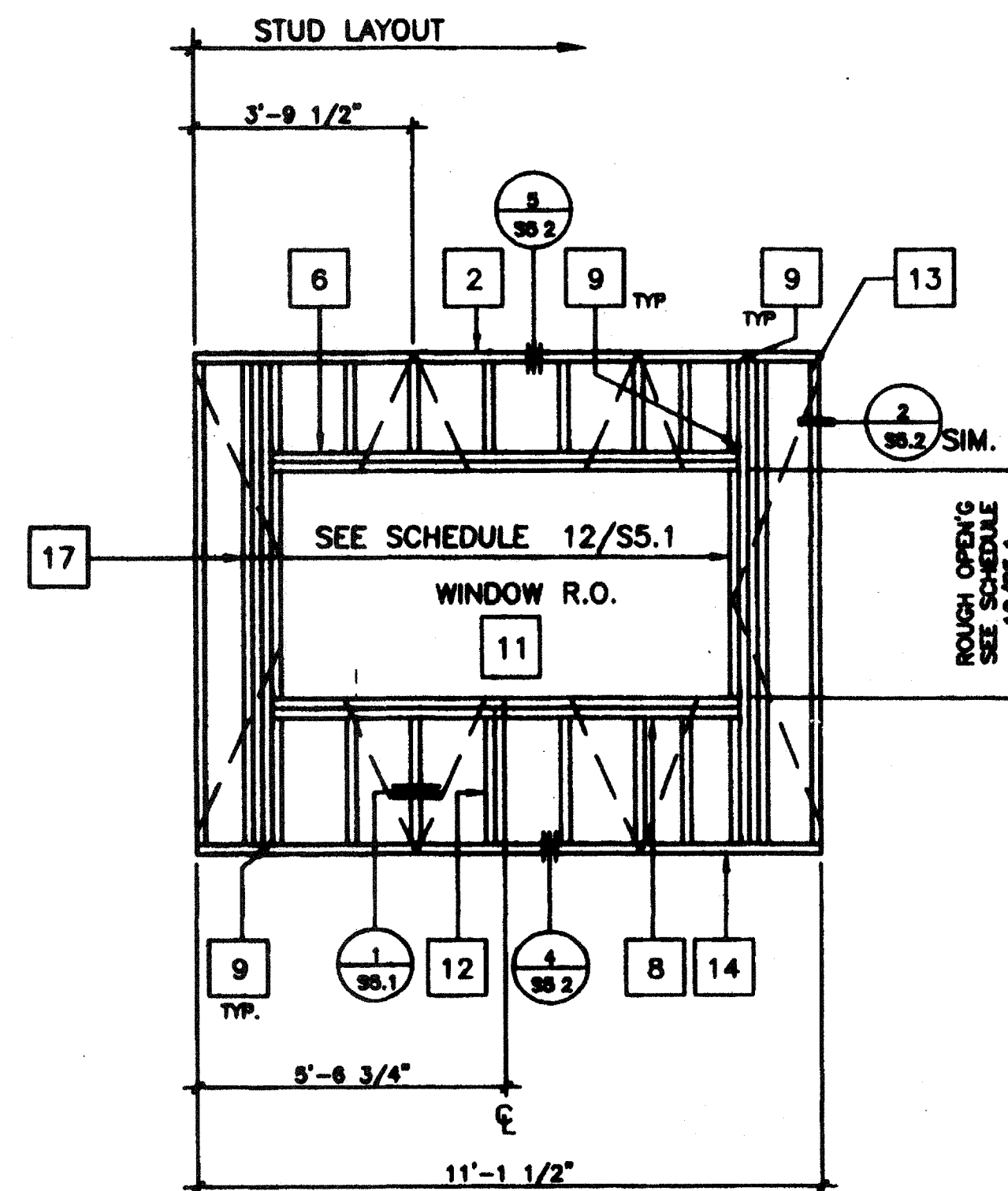
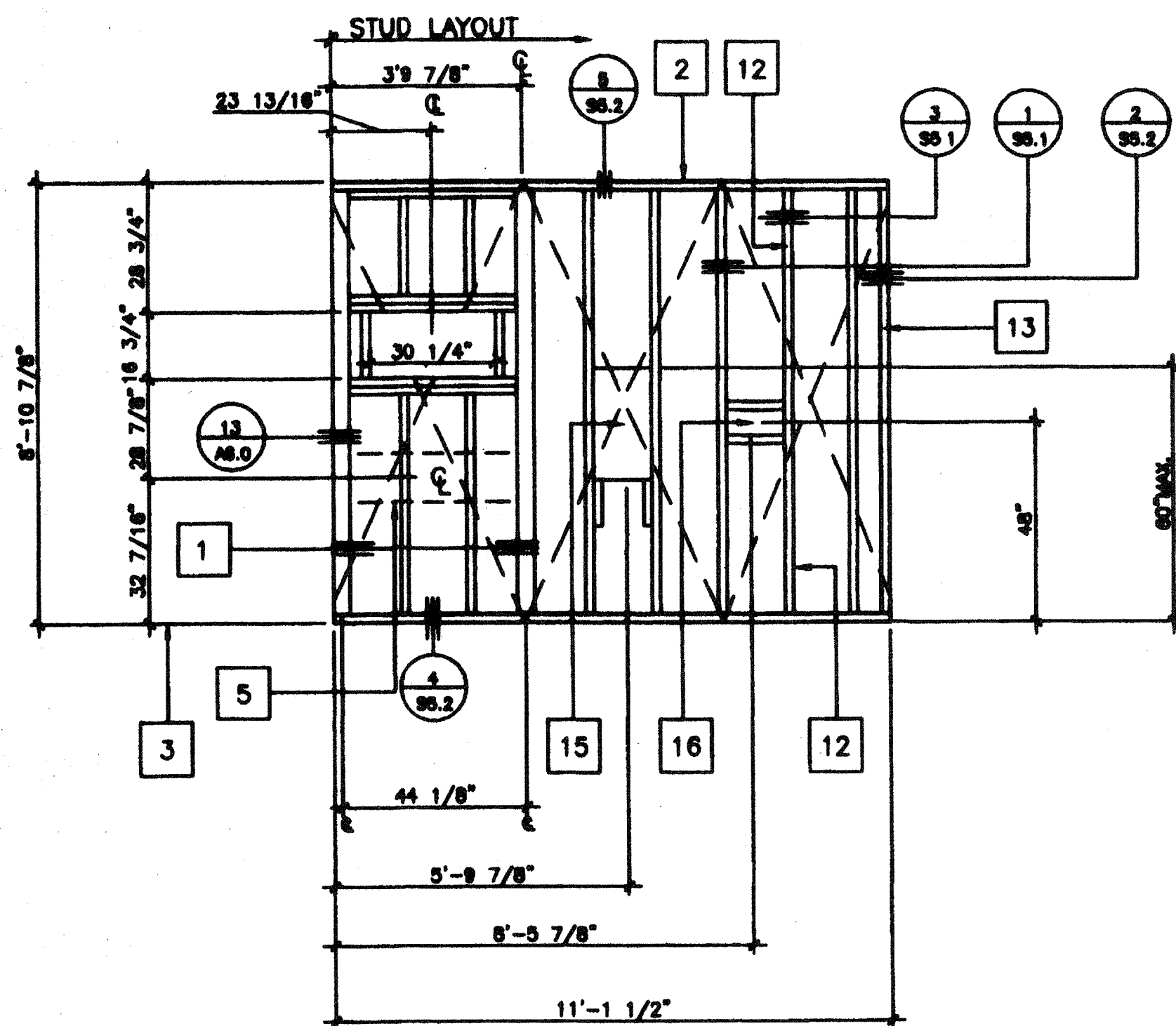


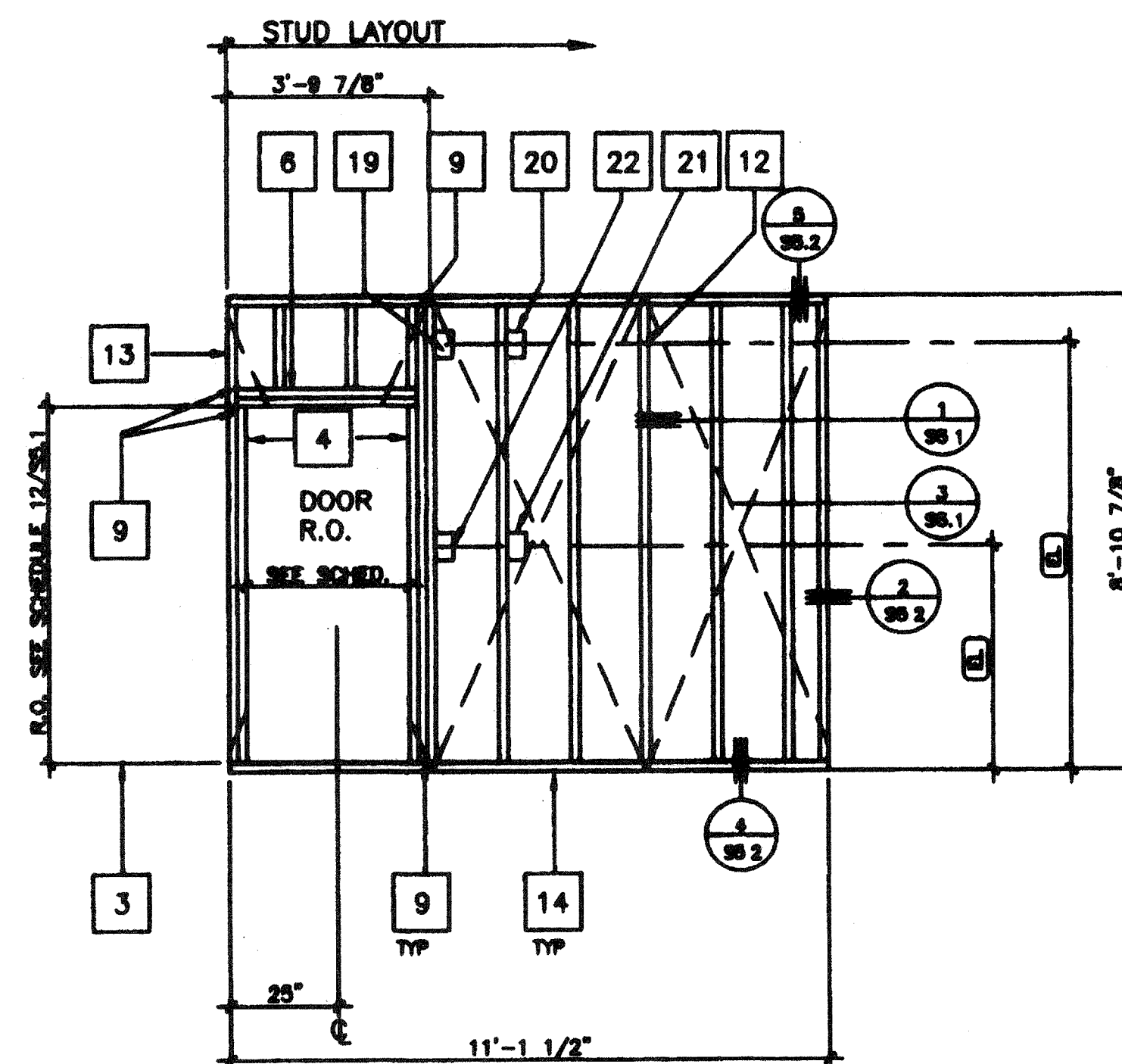
A  
A<sub>1</sub> OPPOSITE HAND



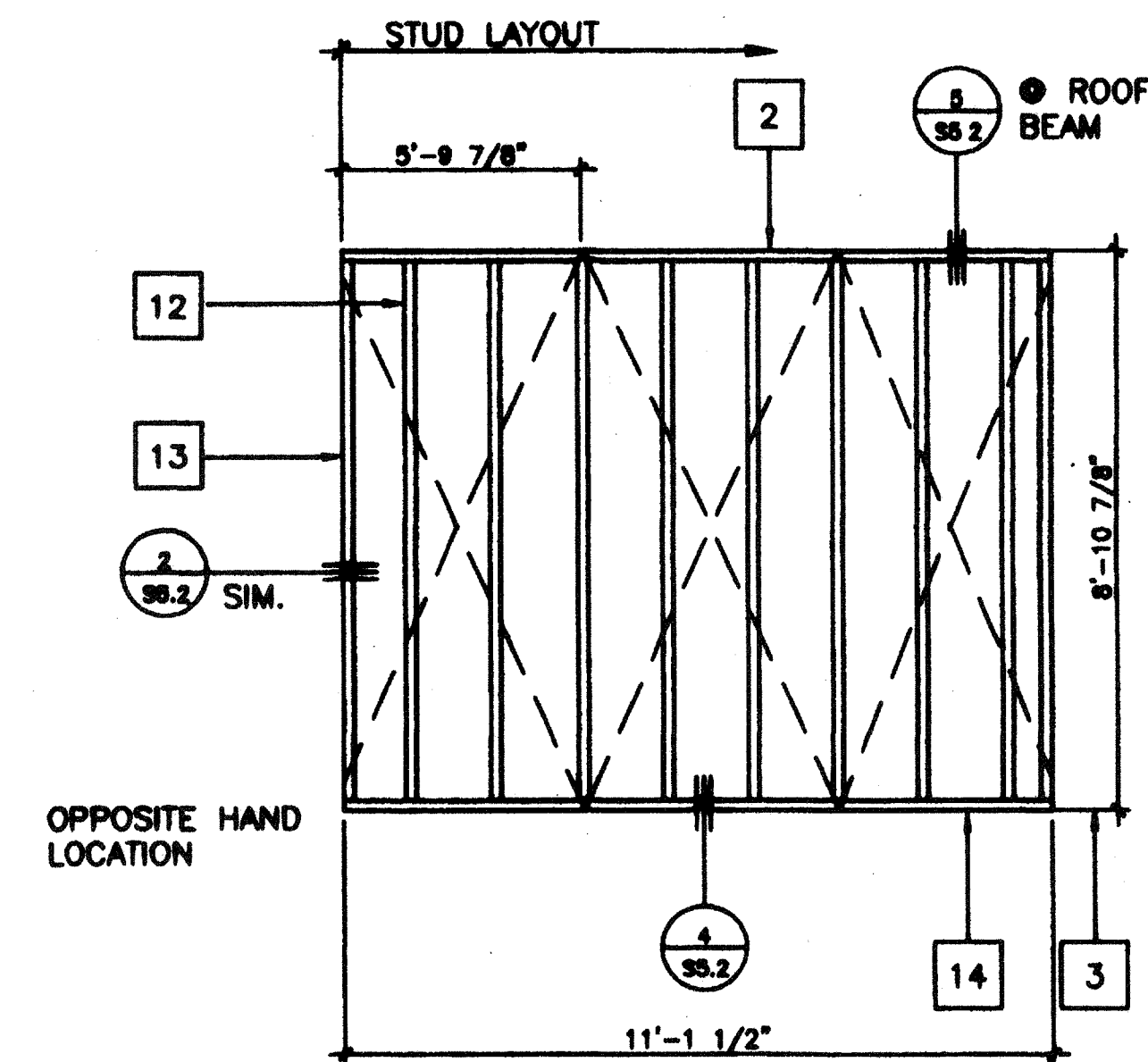
B  
B<sub>1</sub> OPPOSITE HAND



C  
C<sub>1</sub> OPPOSITE HAND



D  
D<sub>1</sub> OPPOSITE HAND



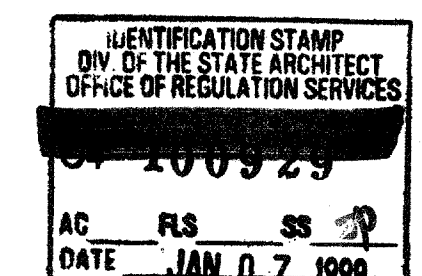
E

SCALE 3/8"=1'

KEY NOTES

- 1 4 X 4 POST
- 2 2X4 TOP PLATE
- 3 FINISH FLOOR
- 4 2X4 FULL HGT KING STUDS AND 2X4 TRIMMER (SEE SCHEDULE FOR QUANTITY SHT S5 1)
- 5 2x6 LET IN FOR AC SUPPORT SEE 15/A6 0
- 6 HEADER (SEE SCHEDULE)
- 7 TYPICAL DUPLEX WALL RECEPTICAL FOR SPECIFIC LOCATION SEE (EL)
- 8 WINDOW SILL PLATE (SEE SCHEDULE)
- 9 A 34 CLIPS @ HEADER & SILL TO FULL HGT STUDS AND FULL HGT. STUDS TO TOP AND BOTTOM PLATES
- 10 REQUIRED OPENING FOR A 3068 DOOR (SEE DETAIL 7/S5 1)
- 11 REQUIRED OPENING FOR A 8040 WINDOW (SEE DETAIL 6/S5 1)
- 12 2X4 STUD @ 16" O.C TYPICAL
- 13 2X4 NAILER TYPICAL @ EACH END
- 14 2X4 SILL PLATE
- 15 FRAME FOR ELECTRICAL PANEL
- 16 THERMOSTAT LOCATION 4S BOX
- 17 FULL HGT. STUDS AND 1-2X4 TRIMMER (SEE WINDOW SCHEDULE FOR JAMB STUDS REQUIRED SHT. S5 1)
- 18 CLOCK OUTLET (EL)
- 19 "J" BOX FOR EXTERIOR LIGHT FIXTURE (TO EXTERIOR) (EL)
- 20 "J" BOX FOR FIRE HORN (TO EXTERIOR) (EL)
- 21 "J" BOX FOR FIRE PULL STATION (TO INTERIOR) (EL)
- 22 LIGHT SWITCH BOX (EL)

NOTES



IDENTIFICATION STAMP  
DIV. OF THE STATE ARCHITECT

APP#3 117168

AC FLS SS TN  
Date JAN 04 2018

STKP-42 1/26/98

REVISIONS	Electrical Engineer's Seal	Mechanical Engineer's Seal	Structural Engineer's Seal	Architect's Seal	Division of the State Architect	MODTECH INC.	PROJECT NUMBER	MODTECH, INC	drawn by
						2830 BARRETT AVENUE PERRIS, CALIF. 92572 PH (909) 943-4014 FAX (909) 940-0427	2986	1997	4012-088

WALL FRAMING

S5.0