


FILE # P266 MTO DWG

- KEY NOTES**
- 1 AC1: WALL MOUNT 3.5 TON HEAT PUMP NOMINAL 47,000 BTUH COOL / 46,000 BTUH HEAT W/5kw HEATER OLA AND CALIFORNIA STATE ENERGY APPROVED 208 / 230V, 1 PHASE, MAX FLA 28 AMPS WEIGHT 510 LBS.
 - 2 ① THERMOSTAT - WHITE ROGERS IF92 + 48" A.F.F.
 - 3 12" FLEX DUCT
 - 4  15 x 15 4W SUPPLY AIR GRILLE
 - 5 10" x 30" x 2' PLENUM (SEE SPECS)

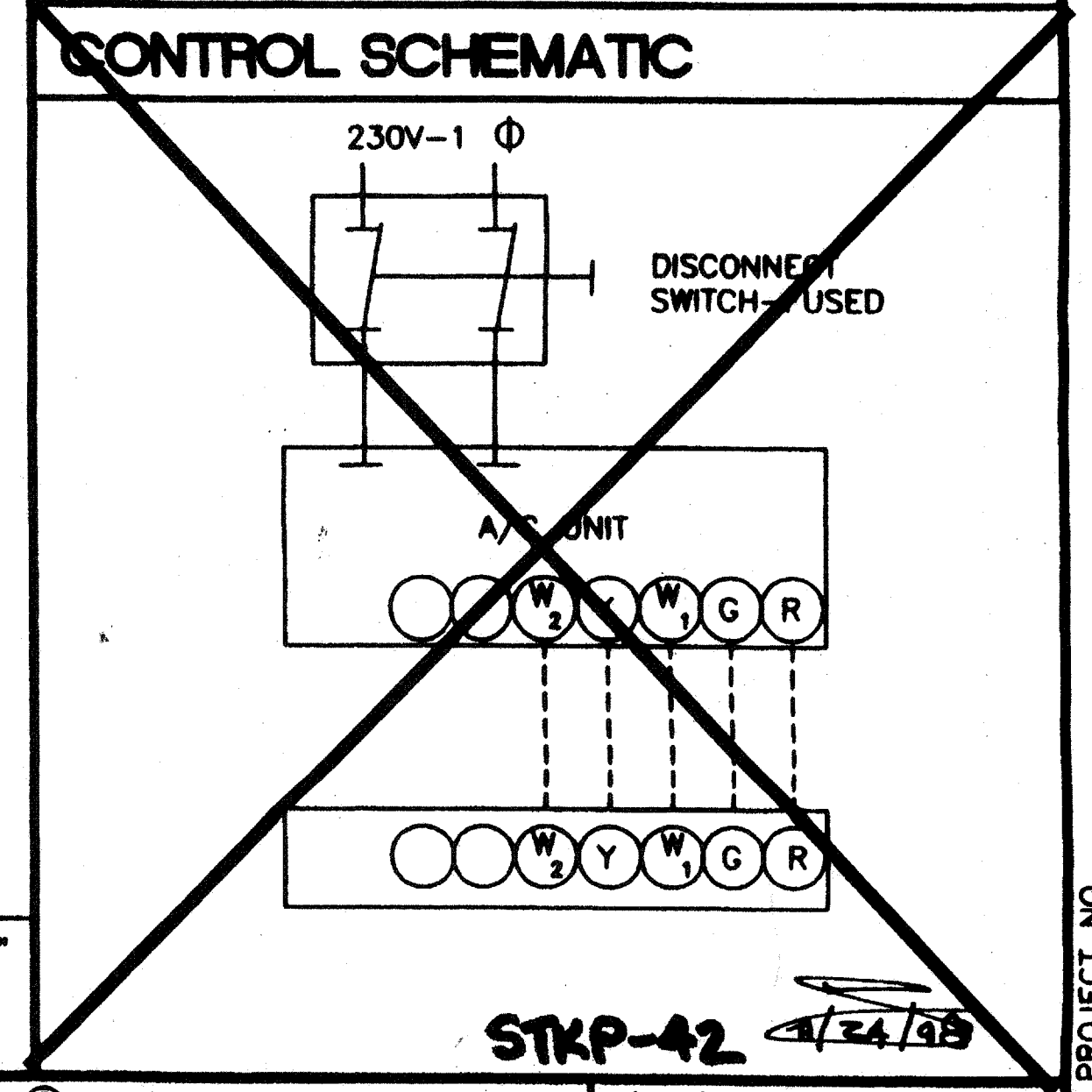
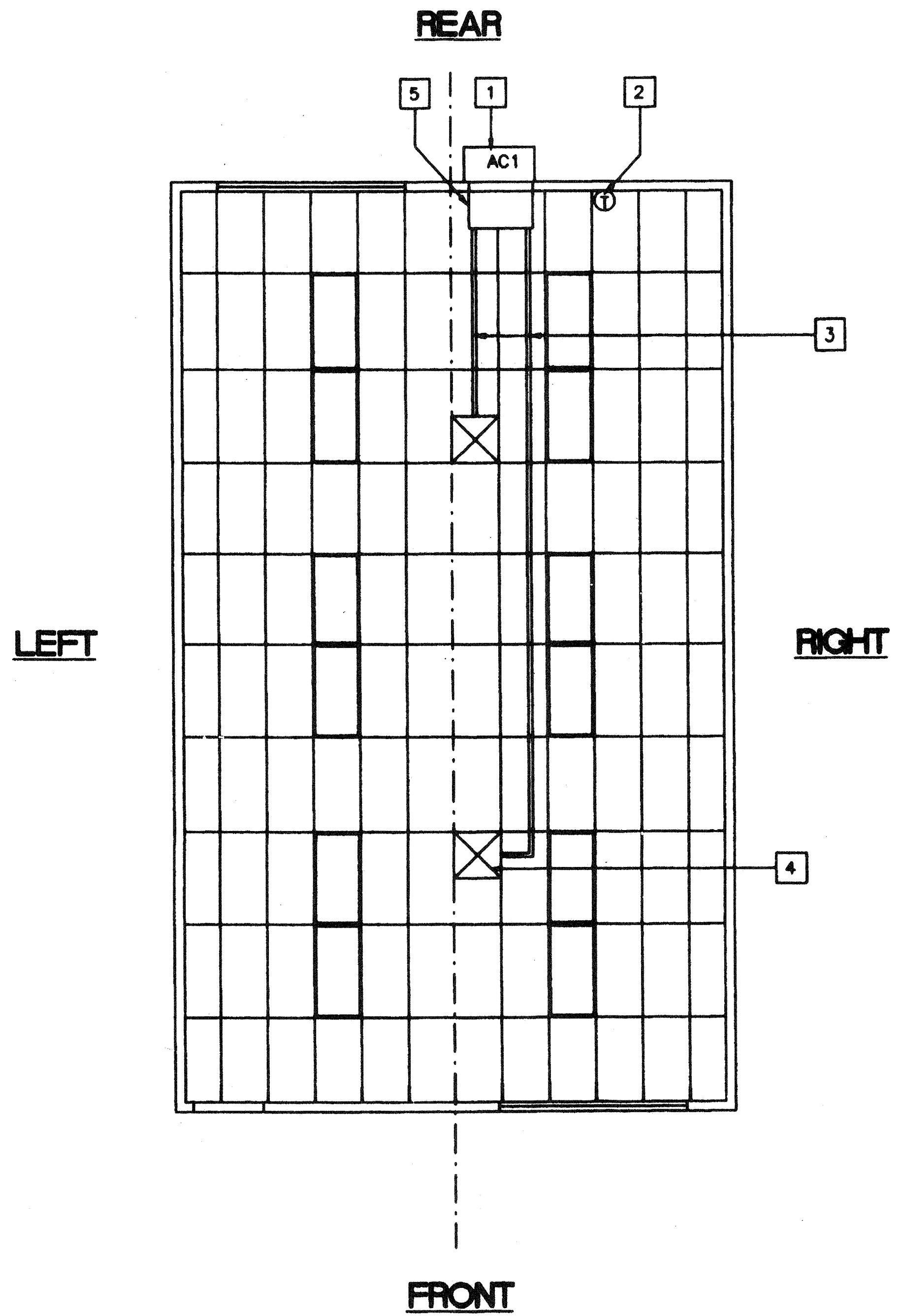
NOTES

1 INSULATION APPLIED TO EXTERIOR SURFACE OF DUCTS LOCATED IN BLDGS SHALL HAVE A FLAME SPREAD OF NOT MORE THAN 25 & A SMOKE-DENSITY NOT EXCEEDING 50 WHEN TESTED AS A COMPOSITE INSTALLATION INCLUDING INSULATION, FACING MATERIALS, TAPES & ADHESIVES AS NORMALLY APPLIED EXCEPT FOR INSULATION HAVING A FLAME SPREAD INDEX NOT EXCEEDING 50 & A SMOKE-DENSITY NOT GREATER THAN 100 MAY BE INSTALLED IN DWELLINGS OR APARTMENT HOUSES WHERE THE DUCT SYSTEM SERVES NOT MORE THAN ONE DWELLING UNIT.

2 **SCHOOL EQUIPMENT ANCHORAGE**
 THE FOLLOWING IS FOR THE MECHANICAL ENGINEER'S INFORMATION ONLY
 THE SEISMIC ANCHORAGE OF MECHANICAL EQUIPMENT SHALL CONFORM TO C.C.R. TITLE 24, SECTION 18304.2 AND TABLE 18-4 AND ANCHORAGE DETAILS FOR ROOF/FLOOR MOUNTED EQUIPMENT WEIGHING LESS THAN 400 LBS AND HUNG EQUIPMENT WEIGHING LESS THAN 20 LBS MAY BE OMITTED FROM THE PLANS
FOR MECHANICAL DRAWINGS:
 ALL MECHANICAL EQUIPMENT SHALL BE BRACED OR ANCHORED TO RESIST A HORIZONTAL FORCE ACTING IN ANY DIRECTION USING THE FOLLOWING CRITERIA

EQUIPMENT ON GRADE	30% OF OPERATING WEIGHT
EQUIPMENT ON STRUCTURE	30% OF OPERATING WEIGHT

FOR FLEXIBLY MOUNTED EQUIPMENT USE 4 X THE ABOVE VALUES, AND FOR SIMULTANEOUS VERTICAL FORCE USE 1/3 X THE HORIZONTAL FORCE
 THE ABOVE VALUES ARE FOR AN IMPORTANCE FACTOR, I = 1.0 AND SEISMIC ZONE, Z = 0.4
 WHERE ANCHORAGE DETAILS ARE NOT SHOWN ON THE DRAWINGS THE FIELD INSTALLATION SHALL BE SUBJECT TO THE APPROVAL OF THE MECHANICAL ENG AND THE FIELD ENGINEER OF THE OFFICE OF THE STATE ARCHITECT



MECHANICAL PLAN (24' X 40')
 SCALE 1/4" = 1'-0"

IDENTIFICATION STAMP
 DIV. OF THE STATE ARCHITECT
 OFFICE OF REGULATION SERVICES
 AC / FLS / SS / W
 DATE JAN 07 1999

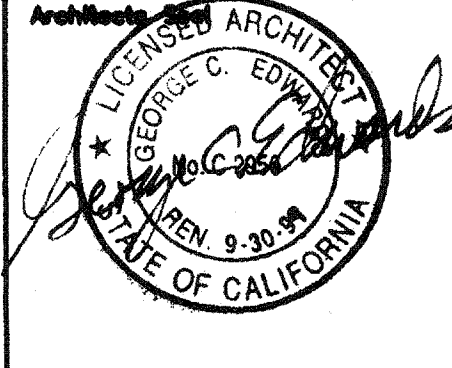
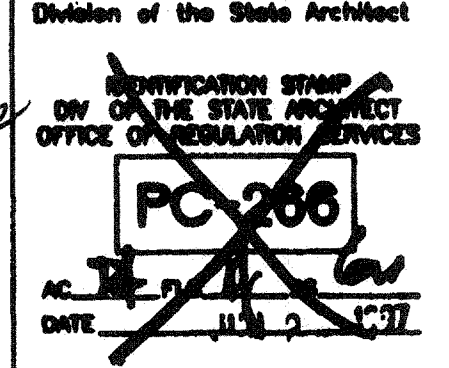
IDENTIFICATION STAMP
 DIV. OF THE STATE ARCHITECT
 OFFICE OF REGULATION SERVICES
 APP#3 117168
 AC / FLS / SS / W
 DATE AUG 04 2015

STKP-42 1/24/99

REVISIONS

1			
2			
3			
4			

REVISIONS

Electrical Engineer's Seal	Mechanical Engineer's Seal	Structural Engineer's Seal	Architect's Seal	Division of the State Architect
				

MODTECH INC.
 2830 BARRETT AVENUE
 PERRIS, CALIF. 92572
 PH (909) 943-4014
 FAX (909) 940-0427

PROJECT NUMBER: 29 86 © MODTECH, INC. 1997

drawn by 4012-088
 checked by 05 JAN 99
 date
 Modtech project no.
 MODTECH Index No.

MECHANICAL (HVAC) PLAN

M1.0

PROJECT NO. 2986
 PC-266