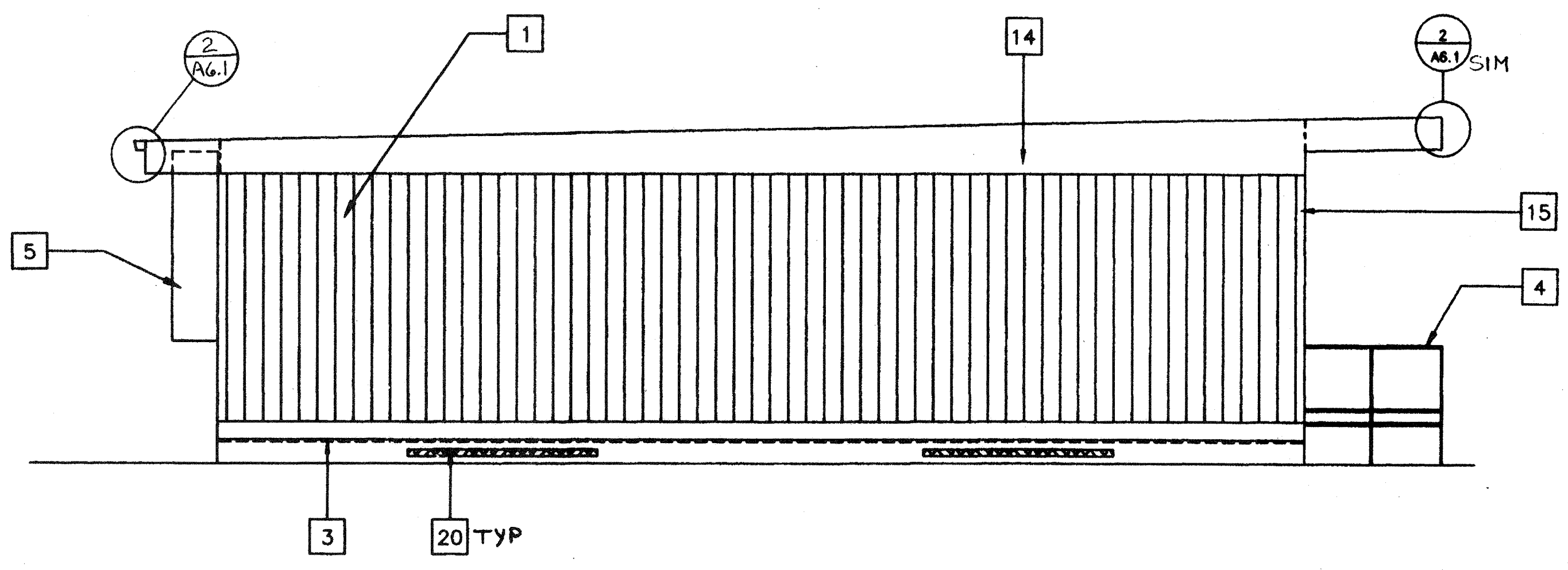
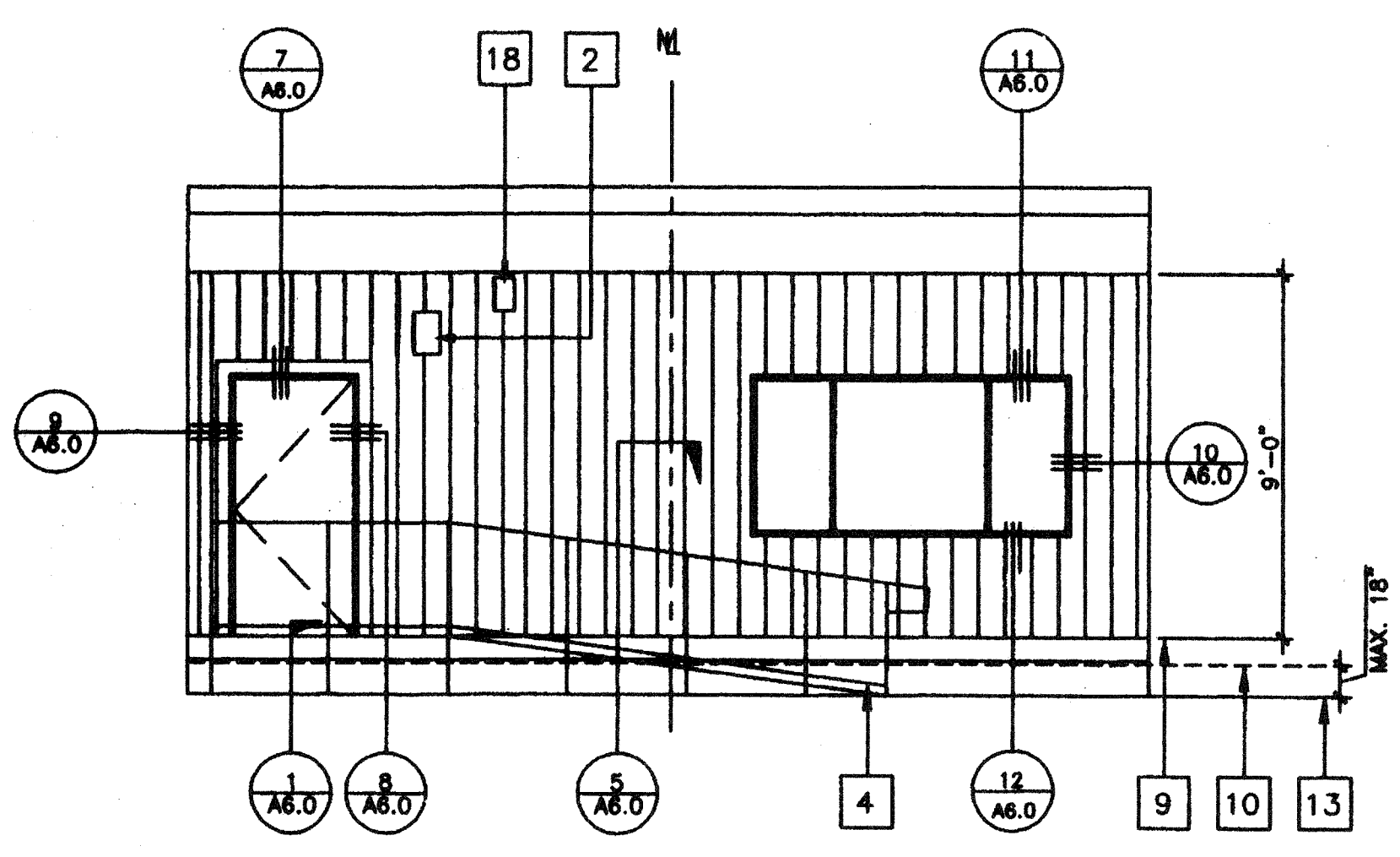
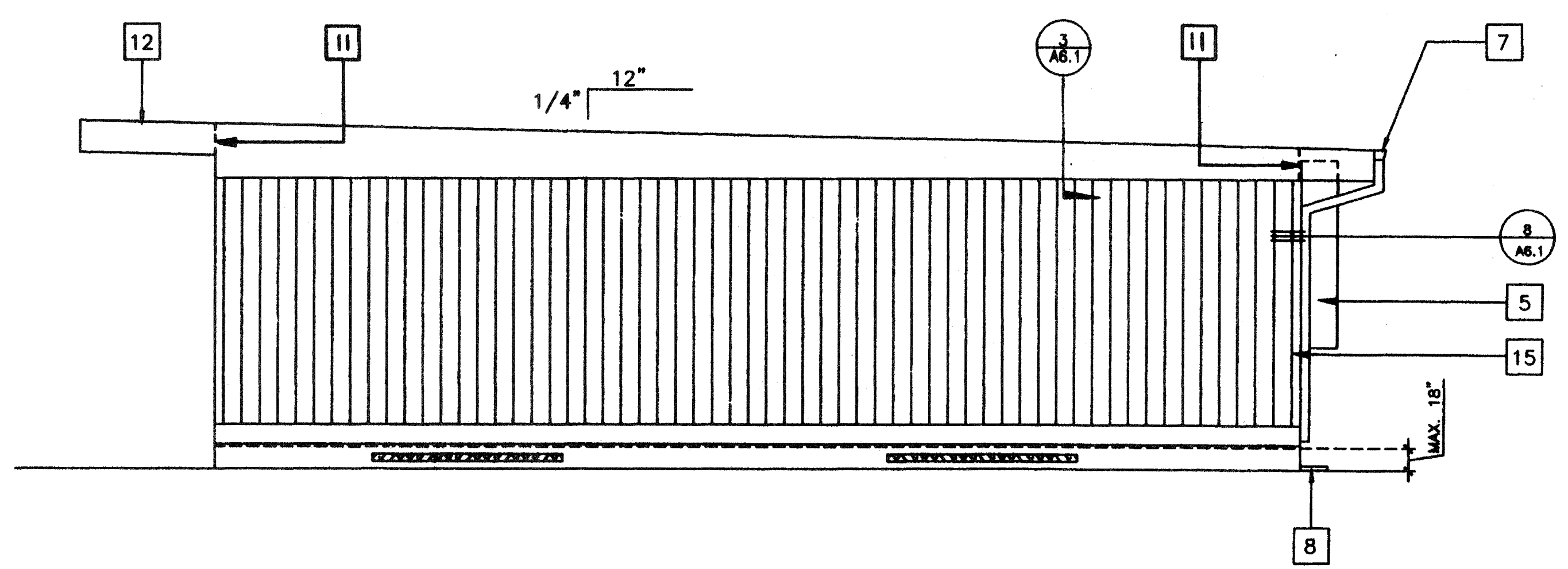
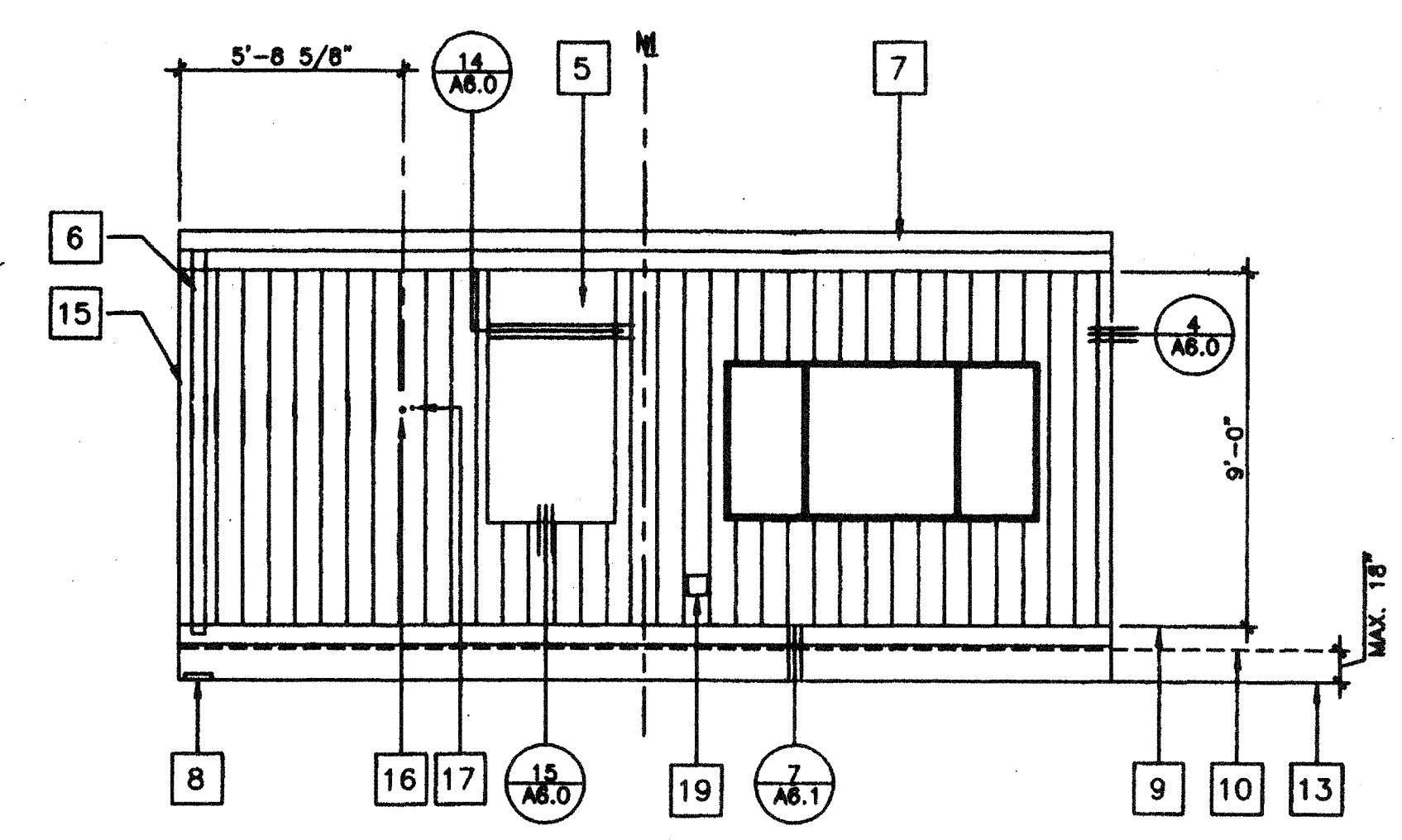


FILE # P268A30



1 FRONT ELEVATION
SCALE 1/4"=1'-0"

2 LEFT SIDE ELEVATION
SCALE 1/4"=1'-0"



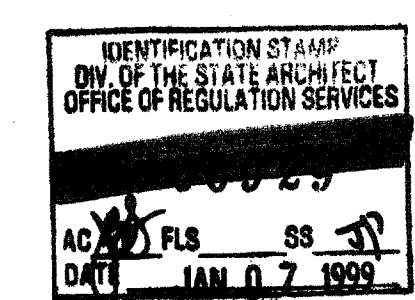
3 REAR ELEVATION
SCALE 1/4"=1'-0"

4 RIGHT SIDE ELEVATION
SCALE 1/4"=1'-0"

KEY NOTES

- 1 TYPICAL EXTERIOR SIDING (SEE SPEC'S)
- 2 EXTERIOR LIGHT FIXTURE (SEE SPEC'S)
- 3 TOP OF SKIRTING
- 4 RAMP AND LANDING SEE SHT. R-1
- 5 HVAC UNIT (HV)
- 6 DOWNSPOUT (TYP.) FOR (1). FASTEN TO BLDG. TYP. 3 PLACES (SEE 8/A6.1)
- 7 CONTINUOUS GUTTER WITH DOWNSPOUT (LOCATION OF DOWNSPOUT SHOWN ON ROOF PLAN)
- 8 SPLASH BLOCK (BY OTHERS)
- 9 FINISH FLOOR LINE
- 10 BOTTOM FLANGE OF FLOOR BEAM
- 11 ROOF HEADER
- 12 ROOF OVERHANG
- 13 FINISH GRADE
- 14 ROOF BEAM (STR)
- 15 COLUMN (STR)
- 16 ELECTRICAL STUB-OUT (EL)
- 17 GROUND STUB-OUT (EL)
- 18 J BOX FOR FA HORN (EL)
- 19 GUTTER BOX (EL)
- 20 FOUNDATION VENT (SEE FOUNDATION PLAN FOR SIZE & LOCATION)

NOTES



IDENTIFICATION STAMP
DIV. OF THE STATE ARCHITECT
APP#3 117168
AC / FLS / SS / TN
Date AUG 04 2018
STKP-42M
11/24/98

REVISED

24' X 40' (MONO SLOPE)

REVISIONS	Electrical Engineer's Seal	Mechanical Engineer's Seal	Structural Engineer's Seal	Architect's Seal	Division of the State Architect	PROJECT NUMBER:	DATE	drawn by:	checked by:	ModTech project no:
1						2986		4012-088	05 JAN 99	
2										
3										
4										
5										
6										

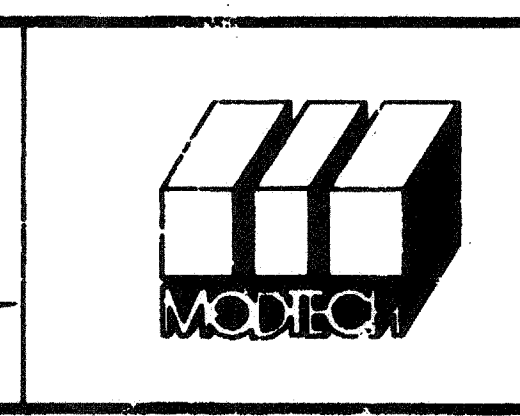
Electrical Engineer's Seal

Mechanical Engineer's Seal

Structural Engineer's Seal

Architect's Seal
LICENSED ARCHITECT
GEORGE C. EDWARDS
STATE OF CALIFORNIA
NOV 9 30 AM
JAN 25 1997

Division of the State Architect
IDENTIFICATION STAMP
DIV. OF THE STATE ARCHITECT
OFFICE OF REGULATION SERVICES
PC-266
AC / FLS / SS / TN
DATE JUN 25 1997



MODTECH INC.
2830 BARRETT AVENUE
PERRIS, CALIF. 92572
PH (909) 943-4014
FAX (909) 940-0427

PROJECT NUMBER: 2986
© MODTECH, INC. 1997
EXTERIOR ELEVATIONS

drawn by: 4012-088
checked by: 05 JAN 99
ModTech project no:
MODTECH Index No.

AA3.0

PROJECT NO. 246
2.506
PC-266