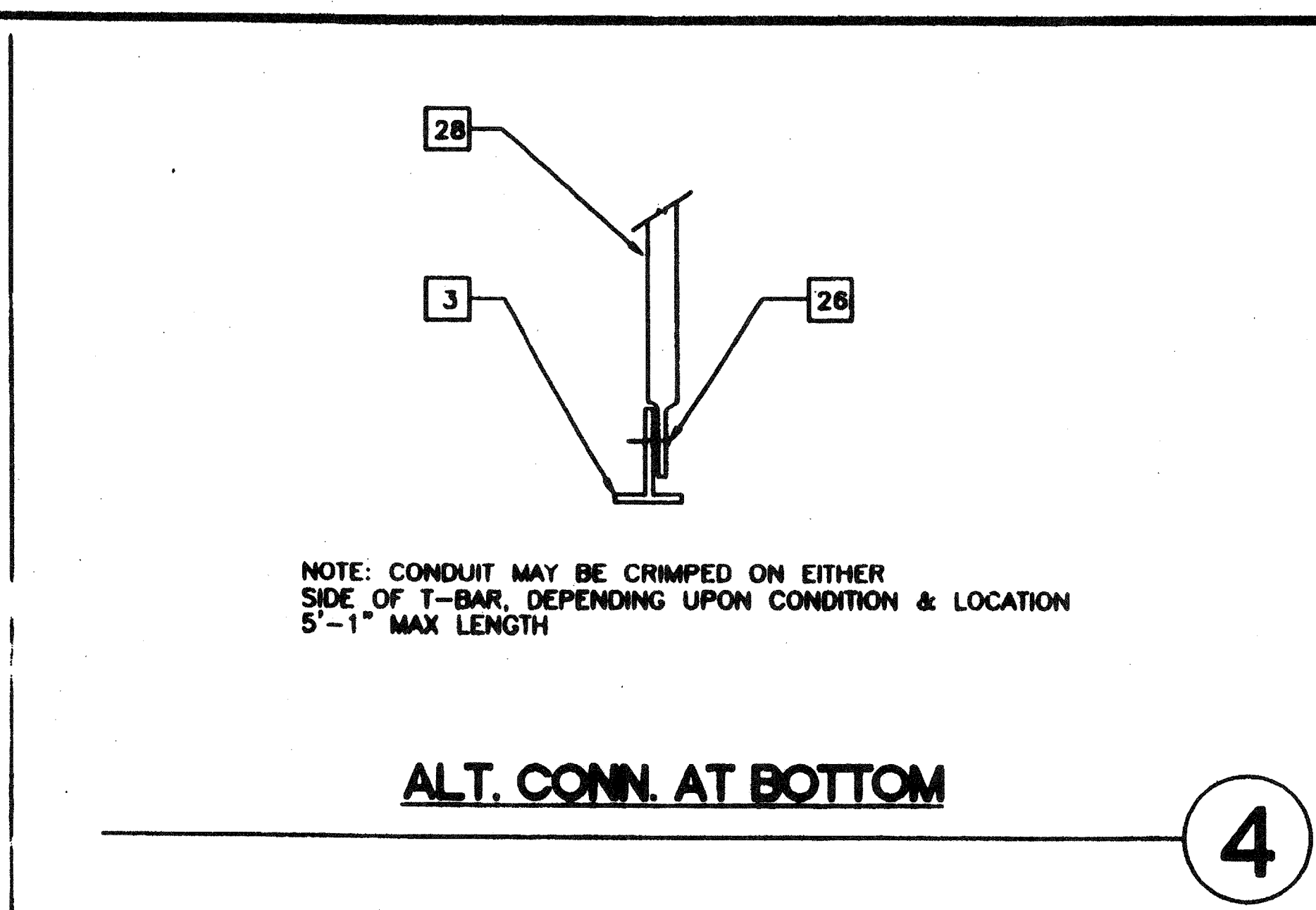


ALTERNATE

TYPICAL FIXED SIDE

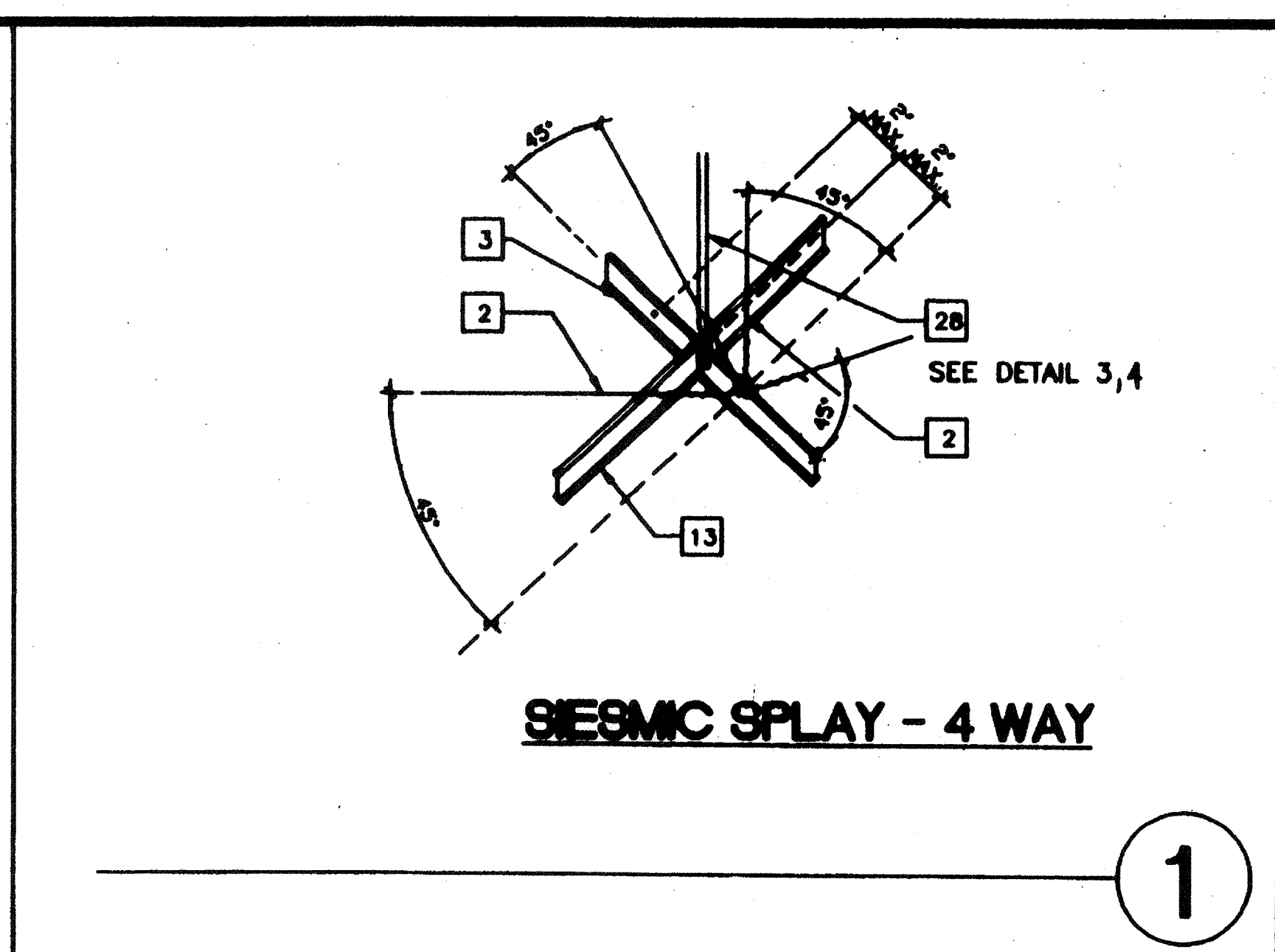
7



NOTE: CONDUIT MAY BE CRIMPED ON EITHER SIDE OF T-BAR, DEPENDING UPON CONDITION & LOCATION 5'-1" MAX LENGTH

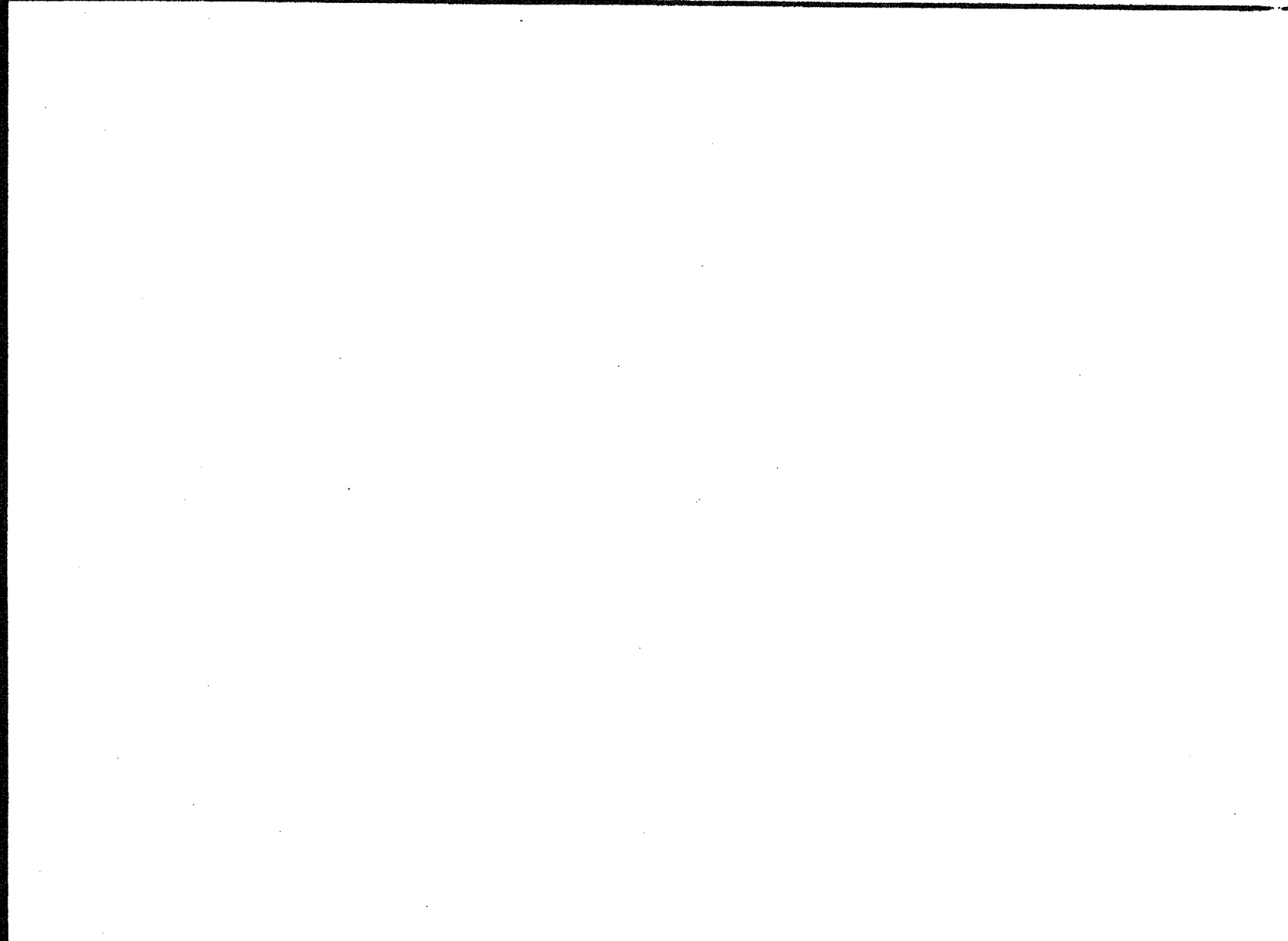
ALT. CONN. AT BOTTOM

4



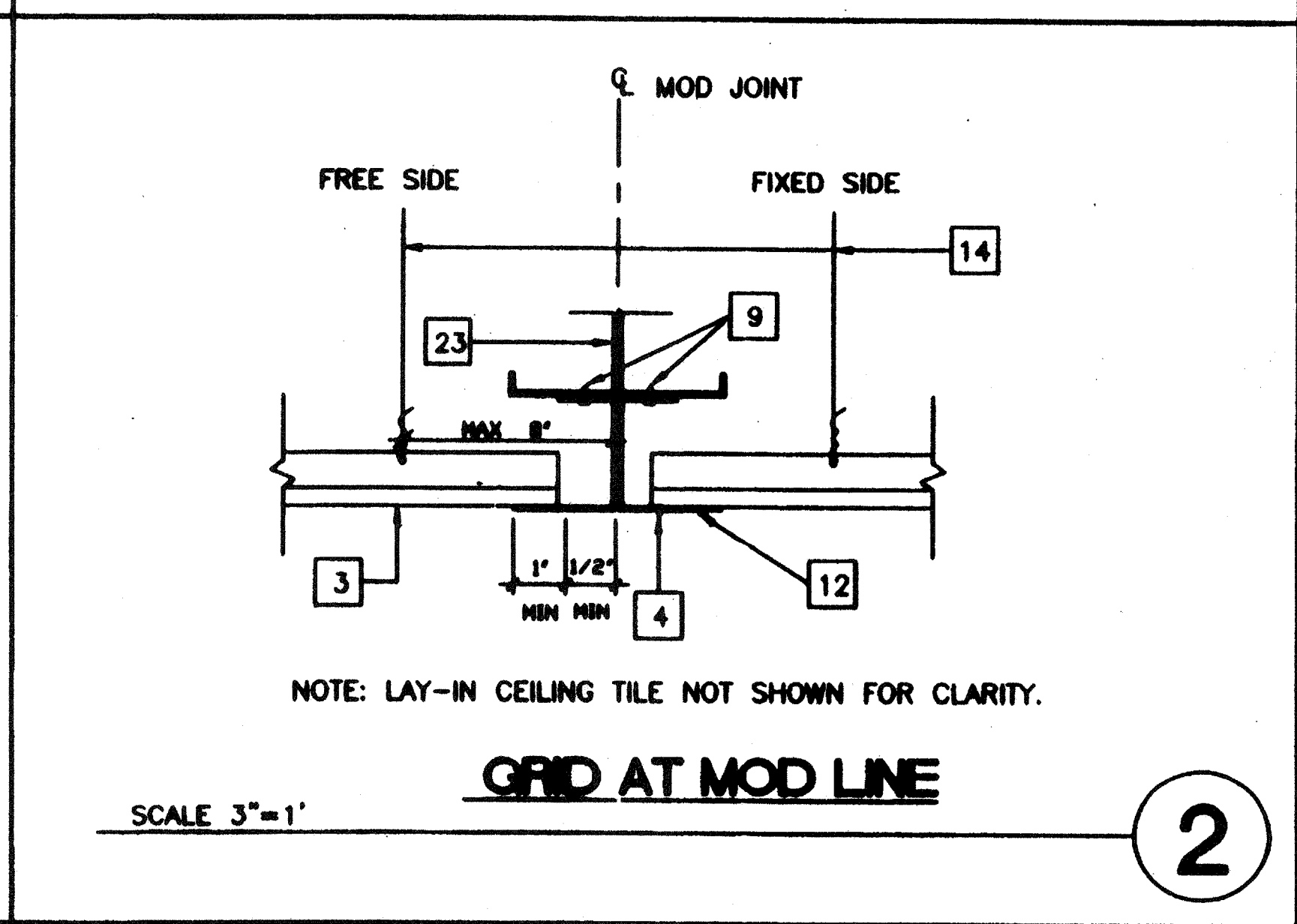
SEISMIC SPLAY - 4 WAY

1



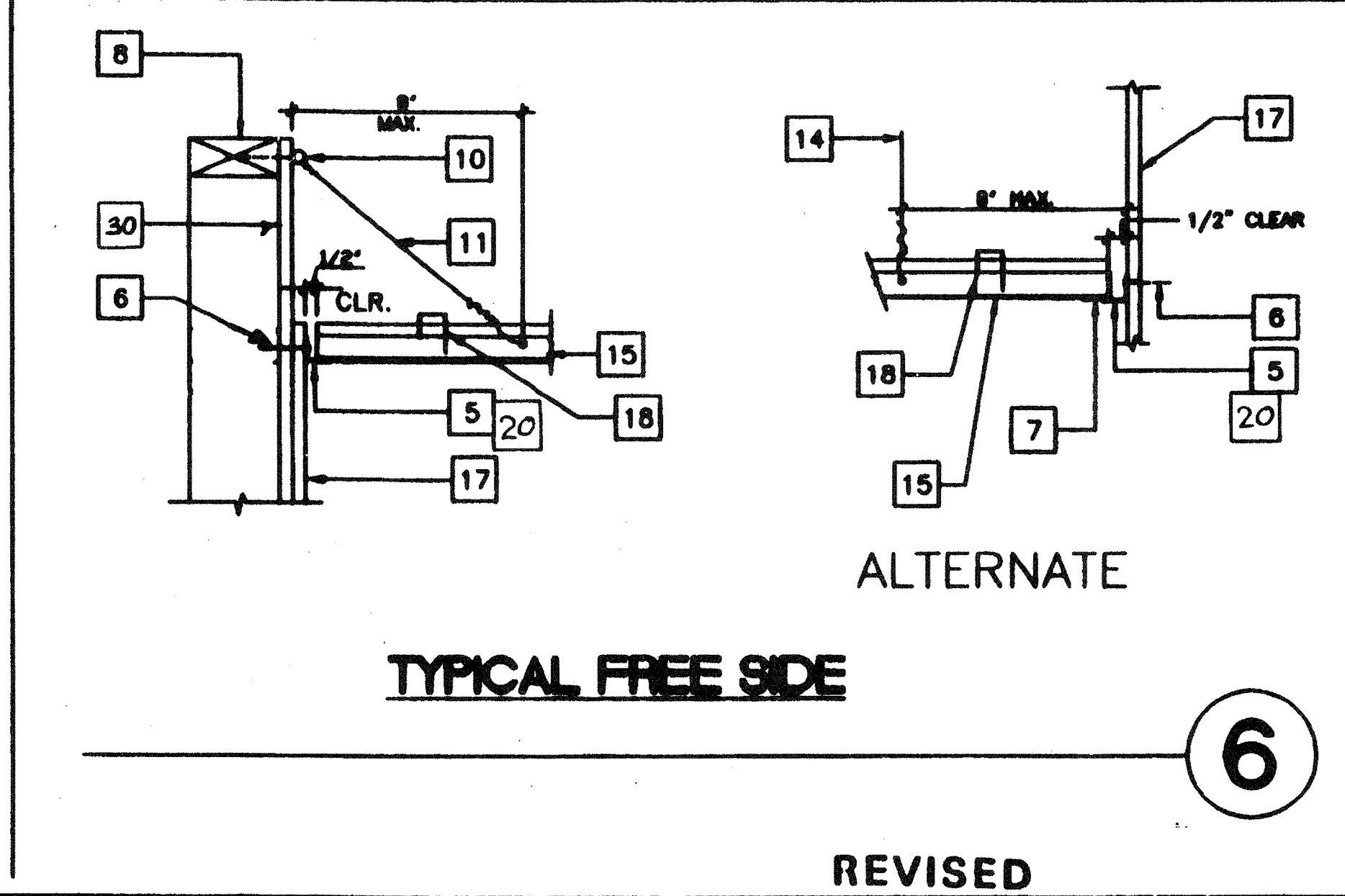
TYP. HANGER WIRE

5



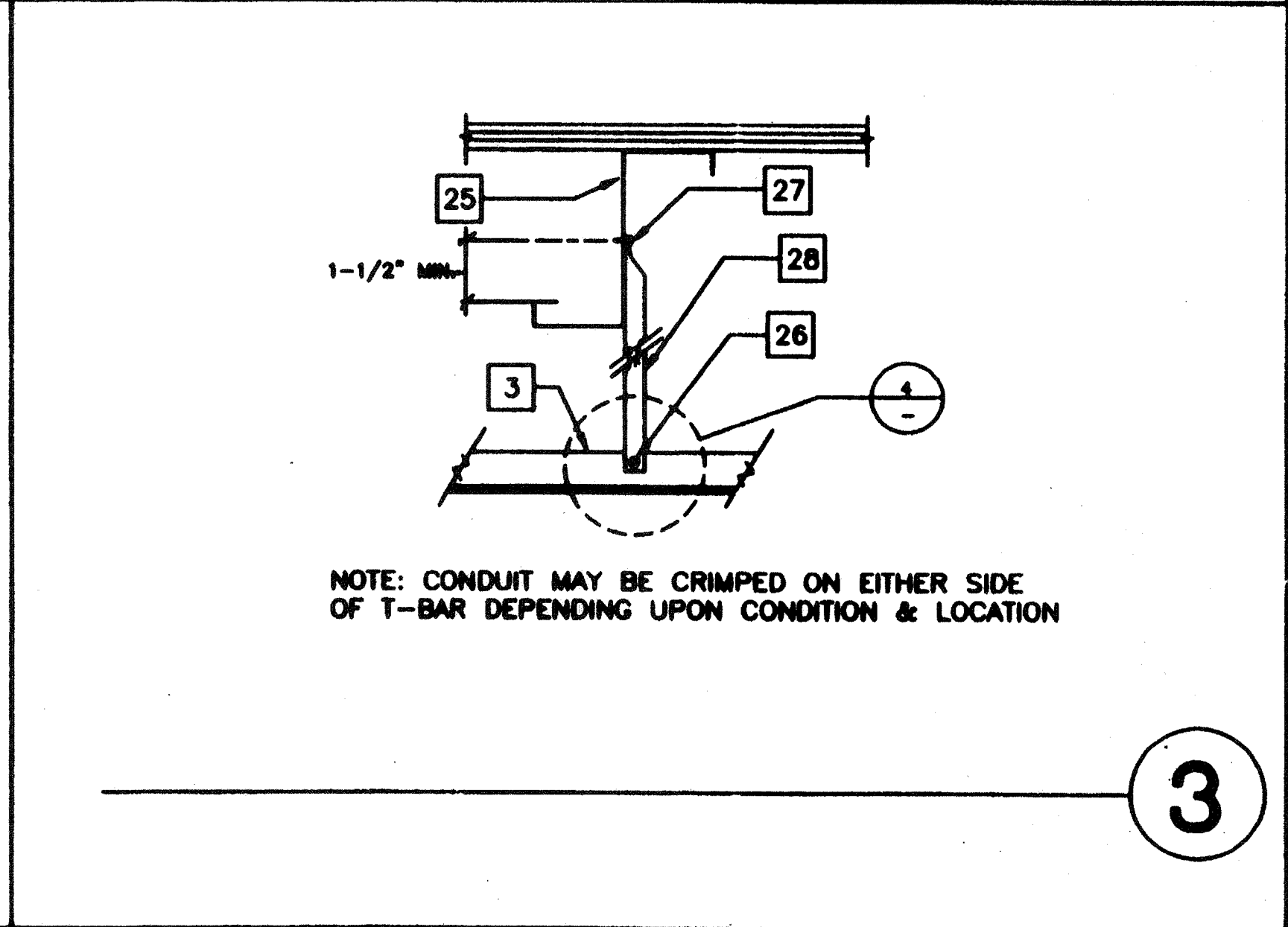
GRID AT MOD LINE

2



TYPICAL FREE SIDE

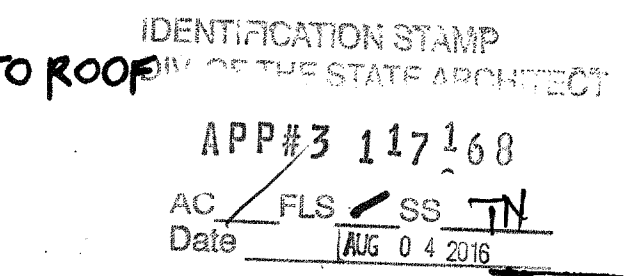
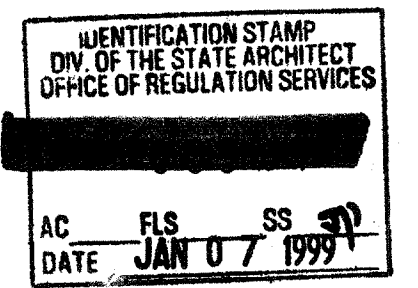
6



NOTE: CONDUIT MAY BE CRIMPED ON EITHER SIDE OF T-BAR DEPENDING UPON CONDITION & LOCATION

3

- KEY NOTES**
- 1 12GA. HANGER WIRE @ 4'-0" O.C. IN PUNCHED OR DRILLED HOLE
  - 2 12GA. WIRE WITH 4 WRAPS IN 1 1/2" (TYP.) WIRE TO RUN PERPENDICULAR TO MAIN TEE
  - 3 MAIN RUNNER
  - 4 1/8" POP RIVET TO EACH T-BAR
  - 5 WALL ANGLE
  - 6 6d 16" @ FRAMING TO WALL STUD
  - 7 ANGLE WITH 1/8" POP RIVET TO EACH T-BAR NO CONNECTION TO WALL ANGLE
  - 8 TOP PLATE
  - 9 #10 S.T.S.M.S. @ 4' O.C.
  - 10 3"x1/4" EYED SCREW W/2" EMBEDMENT
  - 11 HANGER TO WALL WHERE NO RAFTER ABOVE MAX SLOPE 1" IN 6"
  - 12 26 GA. REFLECTED CEILING MOUNT X 2" C
  - 13 CROSS TEE
  - 14 12GA. HANGER WIRE AT THE END ON EACH RUNNER MIN. 4 WRAPS IN MAX 1 1/2"
  - 15 MAIN RUNNERS OR CROSS TEES
  - 16 ACOUSTICAL BOARD
  - 17 FINISH WALL
  - 18 HORIZONTAL STRUTS SHALL RUN CONTINUOUS AT ALL PERIMETERS, NOT POP RIVETED TO THE WALL ANGLE ARMSTRONG #7425 OR #7445 WITH SPRING STEEL SNAP TO RUNNER PER IR 47-4
  - 19 NOT USED
  - 20 NO POP RIVETS
  - 21 NOT USED
  - 22 NOT USED
  - 23 NOT USED
  - 24 NOT USED
  - 25 ROOF PURLIN
  - 26 CRIMP CONDUIT AND ATTACH TO T-BAR GRID W/#8 TEKSCREWS
  - 27 CRIMP CONDUIT TO RAFTER W/2-#8 TEKSCREW
  - 28 3/4" E.M.T. CONDUIT
  - 29 NOT USED
  - 30 EXTEND GYP BRD TO ROOF



| REVISIONS | Electrical Engineer's Seal | Mechanical Engineer's Seal | Structural Engineer's Seal | Architect's Seal | Division of the State Architect |
|-----------|----------------------------|----------------------------|----------------------------|------------------|---------------------------------|
|           |                            |                            |                            |                  |                                 |
|           |                            |                            |                            |                  |                                 |
|           |                            |                            |                            |                  |                                 |
|           |                            |                            |                            |                  |                                 |

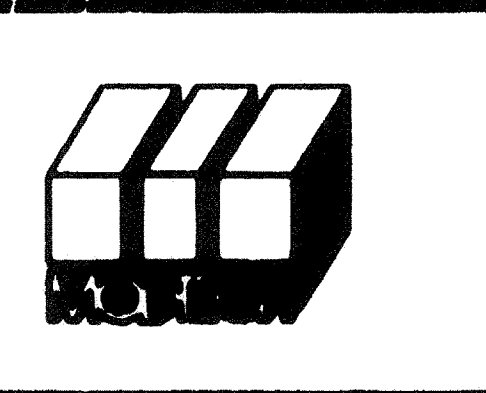
Electrical Engineer's Seal

Mechanical Engineer's Seal

Structural Engineer's Seal

Architect's Seal

Division of the State Architect



**MODTECH INC.**  
2830 BARRETT AVENUE  
PERRIS, CALIF. 92572  
PH (909) 943-4014  
FAX (909) 940-0427

PROJECT NUMBER: 2986

© MODTECH, INC. 1997

drawn by: 1012-088  
checked by: 05 JAN 99  
date: 05 JAN 99  
project no: 2986

REFLECTED CEILING DETAILS

A7.1

FILE # P286 A7.1.DWG PROJECT NO. PC-286