

ELECTRICAL PANEL SCHEDULE

LOAD	WATTS		BREAKER				WATTS		LOAD
	Ap	Bp	Amps	P	Q	R	Ap	Bp	
RECEPTACLE (4)	720		20	1	1				HVAC (3 1/2T)
RECEPTACLE/CLOCK (5)		720	20	1	3			3360	HVAC (3 1/2T)
								2500	HEAT STRIPS (BKW)
								2500	HEAT STRIPS (BKW)
INT/EXT LIGHTS (11)	780		20	1	9				
INT. LIGHTS (10)		700	20	1	11				
WATTS/PHASE	A = 7340	1480	1420				5800	5800	B = 7320
TOTAL	14810	WATTS	82	AMPS	120/240	VOLTS	SINGLE #	THREE	WIRE
NCL =	13080	WATTS							

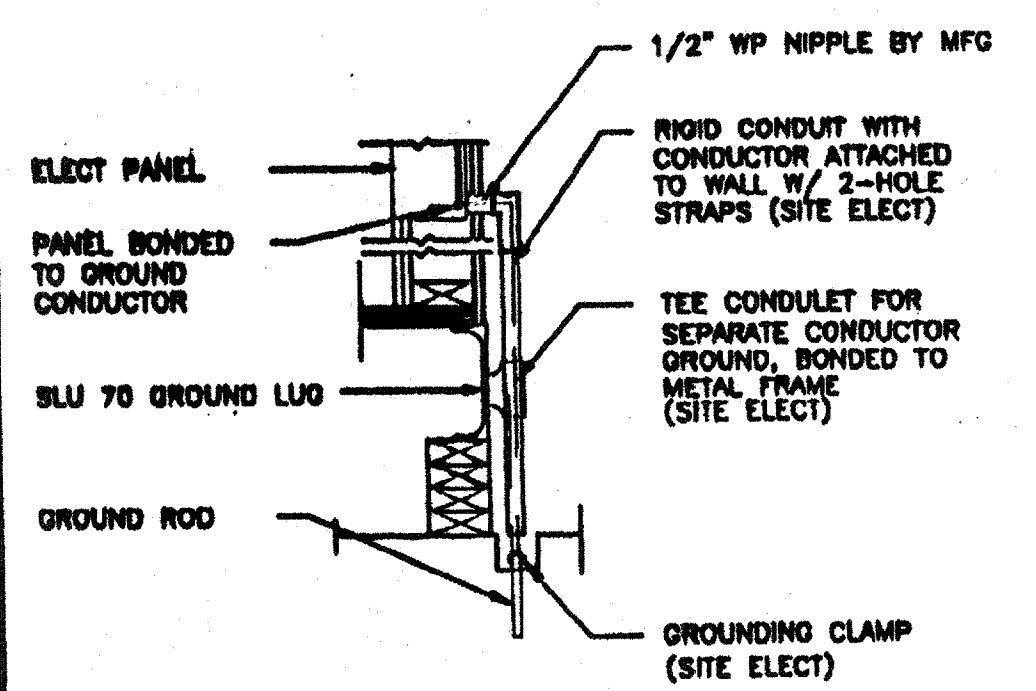
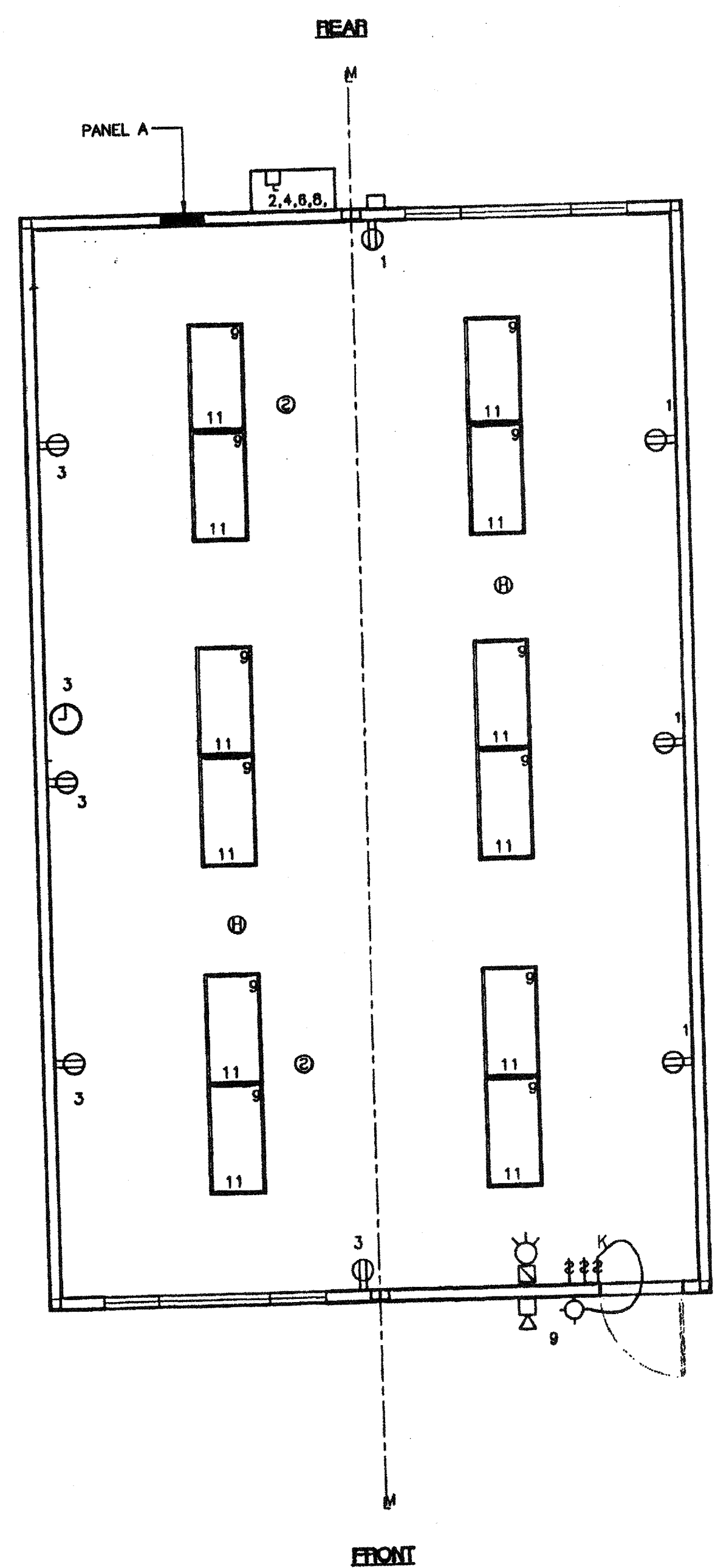
GENERAL GROUNDING NOTES

- EACH BUILDING SHALL BE SEPARATELY GROUNDED WITH A 3/4" RD. 2" COPPERCLAD STEEL GROUND ROD, WHERE ROCK BOTTOM IS ENCOUNTERED, ROD SHALL BE DRIVEN AT AN ANGLE NOT TO EXCEED 45 DEGREE'S FROM THE VERTICAL, OR SHALL BE BURIED IN A TRENCH THAT IS AT LEAST 30" DEEP (BY SITE ELECTRICAL).
- TESTING: TEST FOR RESISTANCE TO GROUND. IF RESISTANCE EXCEEDS 25 OHMS, INSTALL ADDITIONAL GROUND RODS SEPARATED AT LEAST 8'-0" UNTIL RESISTANCE IS REDUCED TO 25 OHMS OR LESS. (BY SITE ELECTRICAL).
- APPROVAL OF THIS PLAN DOES NOT CONSTITUTE APPROVAL OF THIS FIRE ALARM FOR ALL SITES. THE FIRE ALARM SYSTEM AND/OR COMPONENTS MAY BE REQUIRED TO BE CHANGED DUE TO SITE LOCATION, EXISTING CONDITIONS OR INCOMPATIBLE COMPONENTS.
- GROUND MG TEST SHALL BE DONE IN THE PRESENCE OF THE PROJECT INSPECTOR. ALL GROUNDING SHALL BE IN ACCORDANCE WITH CEC ARTICLE 250.

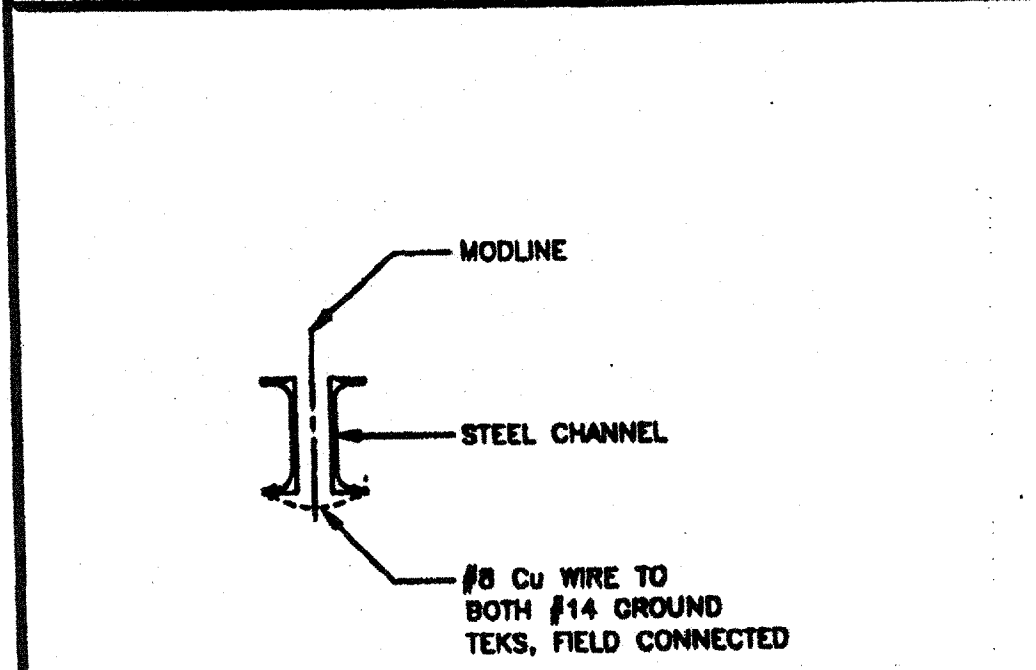
ELECTRICAL LEGEND

- 2'x4' 4 TUBE FLUORESCENT LIGHT FIXTURE
- EXTERIOR LIGHT FIXTURE AT +93' AFF
- SWITCH AT +48' AFF
- DUPLEX WALL RECEPTACLE 15A 125V 3 WIRE AT +18' AFF UNW
- HVAC UNIT (HV)
-
-
-
-
-
- CLOCK AT +90' AFF
- DATA LINE
- 4SD J-BOX FOR OPTIONAL SMOKE DETECTOR (CFL)
- 4SD J-BOX FOR OPTIONAL SMOKE DETECTOR (MTR)

* SMOKE & HEAT DETECTORS SHOWN ARE FOR OPTION AUTOMATIC DETECTION. IF ELECTED AS AN OPTION THEY MUST BE PROVIDED BY DISTRICT. NO PROVISIONS WILL BE MADE UNDER THIS CONTRACT.



TYP GROUNDING DETAIL 1



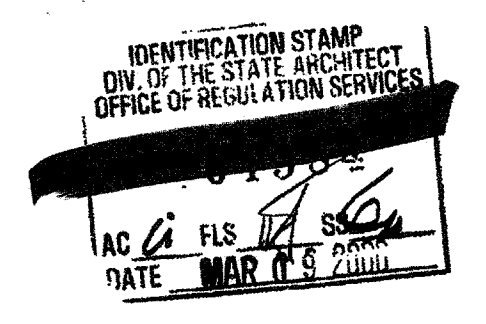
GROUND JUMPER • MOD LINE 2

NOTES

- SCHOOL EQUIPMENT ANCHORAGE
THE FOLLOWING IS FOR THE ARCHITECTS INFORMATION ONLY:
THE SEISMIC ANCHORAGE OF ELECTRICAL EQUIPMENT SHALL CONFORM TO CCR TITLE 24, SECTION 1832A AND TABLE 18A-0. ANCHORAGE DETAILS FOR ROOF/FLOOR MOUNTED EQUIPMENT WEIGHING LESS THAN 400 LBS & HUNG EQUIPMENT WEIGHING LESS THAN 20 LBS MAY BE OMITTED FROM THE PLANS.
FOR ELECTRICAL DRAWINGS:
ALL ELECTRICAL EQUIPMENT SHALL BE BRACED OR ANCHORED TO RESIST A HORIZONTAL FORCE ACTING IN ANY DIRECTION USING THE FOLLOWING CRITERIA:

EQUIPMENT ON GRADE	20% OF OPERATING WEIGHT
EQUIPMENT ON STRUCTURE	30% OF OPERATING WEIGHT

FOR FLEXIBLY MOUNTED EQUIPMENT USE 4 TIMES THE ABOVE VALUES, AND FOR SIMULTANEOUS VERTICAL FORCE USE 1/3 TIMES THE HORIZONTAL FORCE!
THE ABOVE VALUES ARE FOR AN IMPORTANCE FACTOR, I = 1.0 AND SEISMIC ZONE, Z = 4
WHERE ANCHORAGE DETAILS ARE NOT SHOWN ON THE DRAWINGS THE FIELD INSTALLATION SHALL BE SUBJECT TO THE APPROVAL OF THE ARCHITECT AND THE FIELD ENGINEER OF THE OFFICE OF THE STATE ARCHITECT.



IDENTIFICATION STAMP
DIV. OF THE STATE ARCHITECT
OFFICE OF REGULATION SERVICES
APP#3 117168
AC / FLS / SS / TW
Date MAR 04 2010

ELECTRICAL PLAN

CBC 1998

SCALE: 1/4" = 1'-0"

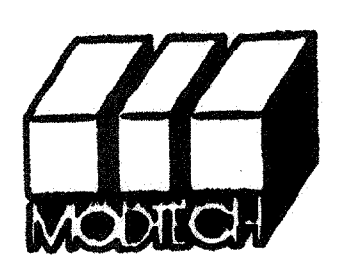
(24'x40')

REVISIONS

NO.	DATE	DESCRIPTION
1		
2		
3		
4		

Electrical Engineer's Seal
Mechanical Engineer's Seal
Architect's Seal

PC
10419
DATE 10/23/99



MODTECH INC.
2830 BARRETT AVENUE
PERRIS, CALIF. 92572
PH (909) 943-4014
FAX (909) 940-0427

PROJECT NUMBER:

© MODTECH, INC. 1999

DRAWN BY:
DATE:
CHECKED BY:
DATE: 10/23/99

ELECTRICAL PLAN w/o DATA

24'x40'

E1.0