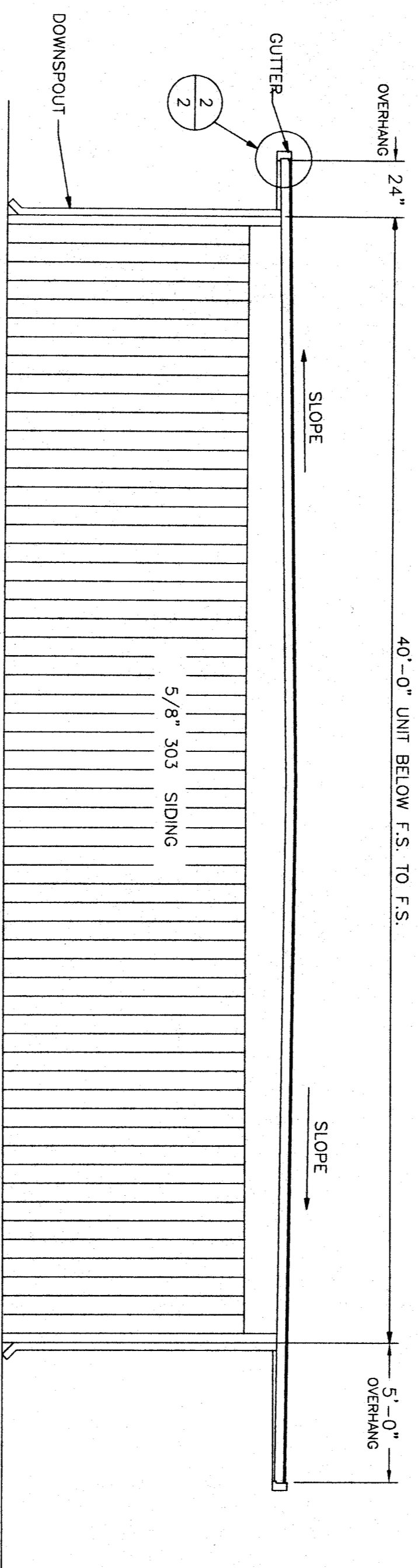


END WALL ELEVATION

SCALE: 3/8" = 1'-0"

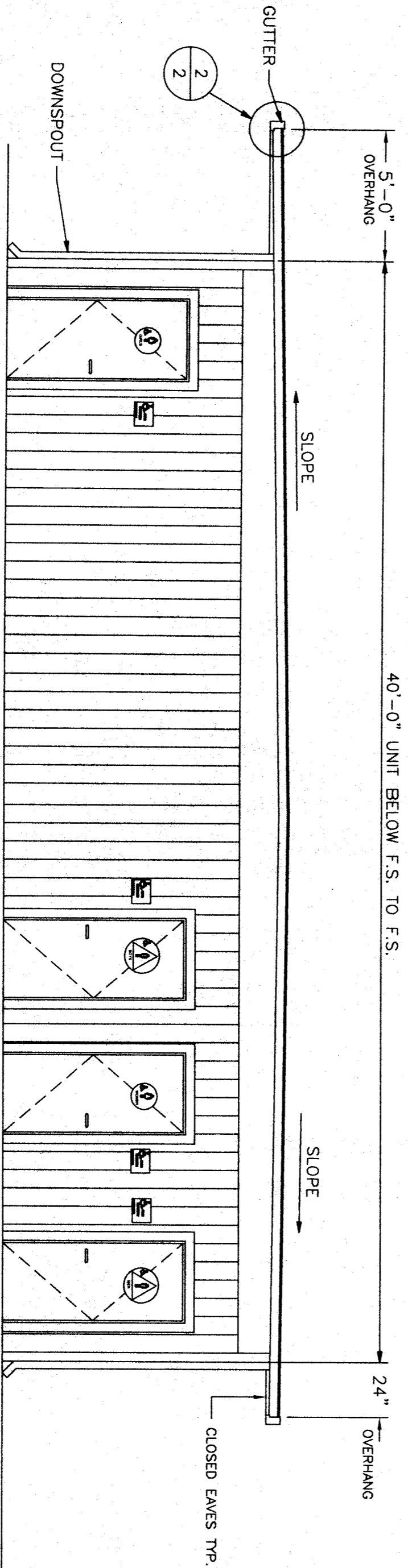
(A)



REAR WALL ELEVATION

SCALE: 1/4" = 1'-0"

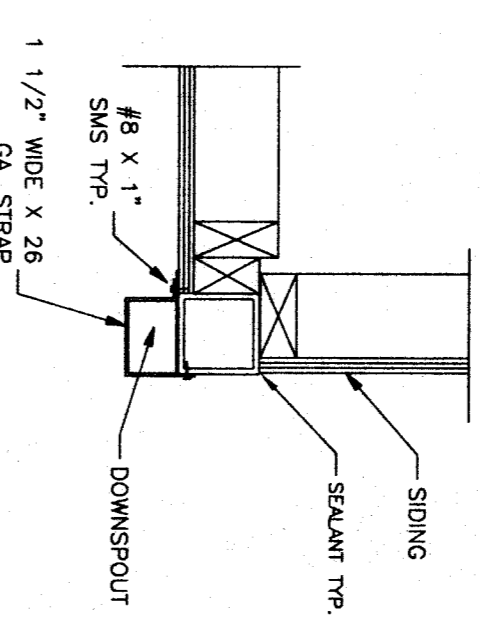
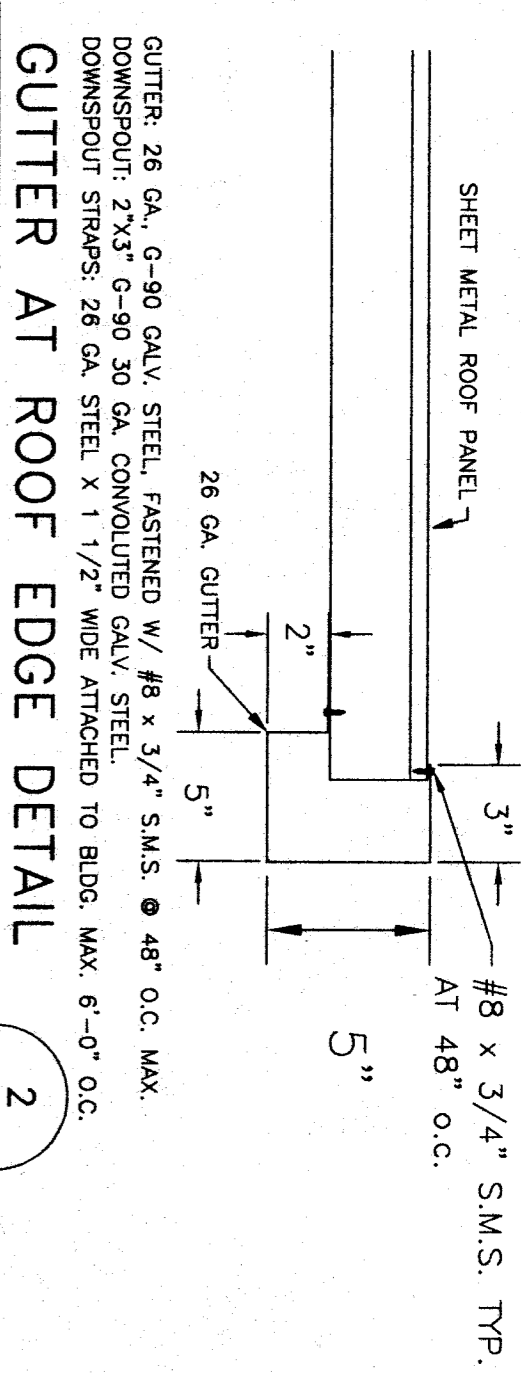
(B)



FRONT WALL ELEVATION

SCALE: 1/4" = 1'-0"

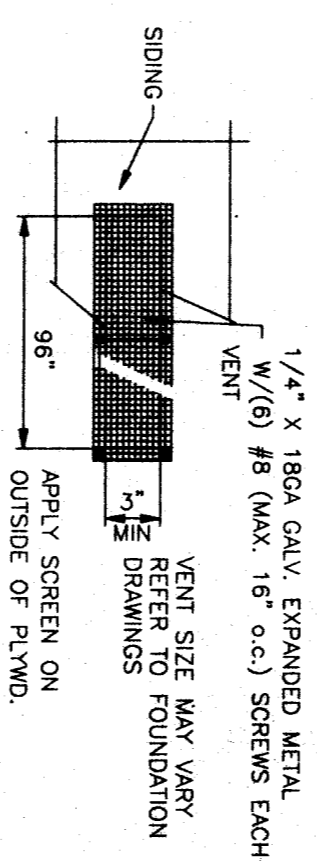
(F)



DOWNSPOUT DETAIL

SCALE: 1/2" = 1'-0"

(3)



VENT DETAIL

SEE SHEET 008 FOR NUMBER OF VENTS AND LOCATIONS. REFER TO FOUNDATION FOR WOOD & ABOVE OR CONCRETE FOUNDATIONS ONLY.

THESE DRAWINGS AND / OR SPECIFICATIONS AND / OR CALCULATIONS FOR THE ITEMS LISTED BELOW HAVE BEEN PREPARED BY OTHER DESIGN PROFESSIONALS WHO ARE LICENSED AND AUTHORIZED TO PREPARE SUCH DRAWINGS IN THIS STATE. THESE PROFESSIONALS HAVE BEEN ADVISED OF THE REQUIREMENTS OF THE CALIFORNIA PROFESSIONAL DESIGNERS ACT AND THE TITLE 24 CALIFORNIA CODE OF REGULATIONS AND THE PROJECT SPECIFICATIONS. THE ITEMS LISTED BELOW ARE ACCEPTABLE FOR INCORPORATION INTO THE CONSTRUCTION OF THIS PROJECT FOR WHICH I AM THE REGISTERED DESIGNER AND THE CONSULTANT RESPONSIBLE FOR THE DESIGN AND CONSTRUCTION OF THIS PROJECT. I HAVE BEEN VERIFIED BY THE BOARD OF ARCHITECTURE FOR THE STATE OF CALIFORNIA AS A LIST OF ITEMS HAS BEEN REVIEWED AND APPROVED FOR THIS PROJECT. A LIST OF ALL APPROVED ITEMS IS ATTACHED TO THESE DRAWINGS. (FOR DRAWINGS, A LIST OF ALL APPROVED ITEMS IS ATTACHED TO THESE DRAWINGS.)

STANLEY J. COLE, M.A.S. D.M.C.



FILE NO. 08-106605
 INSPIRATION STAMP
 DIV. OF THE STATE ARCHITECT
 OFFICE OF REGULATION SERVICES
 DATE JUN 9 2008

BASED ON: FGF-02-107741

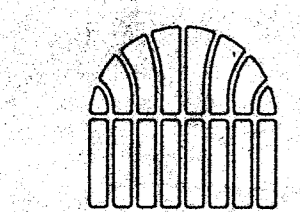
CUSTOMER: BAKERSFIELD CITY SCHOOL DISTRICT
 EXTERIOR ELEVATIONS

DATE: 08-30-02
 SCALE: NONE
 DRAWN BY: YA
 CHECKED BY: SERIAL NO.

NO.	DATE	DESCRIPTION	NO.	DATE	DESCRIPTION

PROJECT NO. SHEET NO. 2

American Modular Systems
 333 EAST CARNEGIE CT. MANTeca, CALIFORNIA 95337
 PHONE: (209) 825-1921 FAX: (209) 825-7018



12 X 40 RELOCATABLE CLASSROOMS