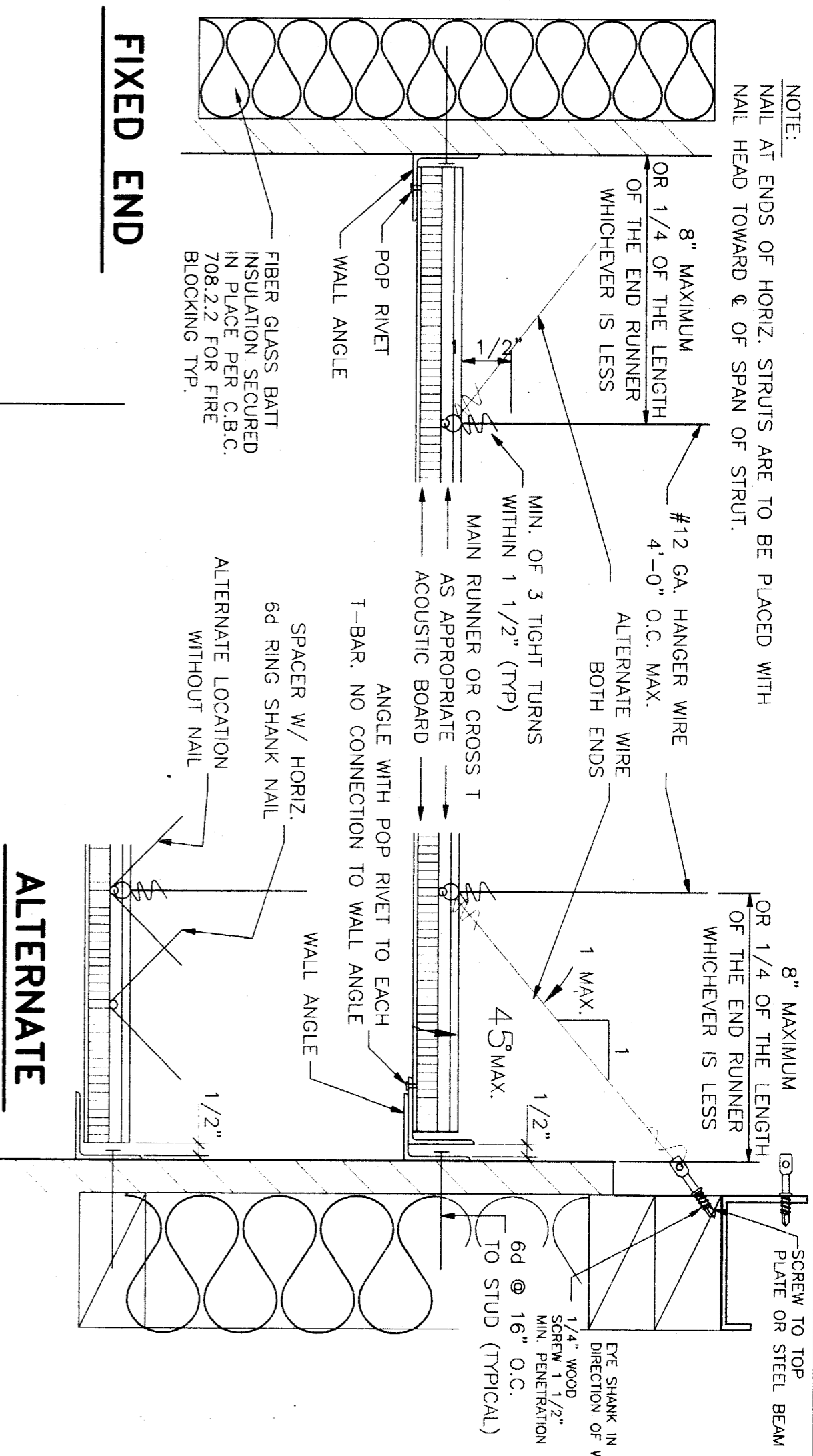


NOTE: SPAYED BRACING WIRES SHALL BE SPACED NOT MORE THAN 12 FT. ON CENTER OR MORE THAN 6 FT. FROM WALLS.

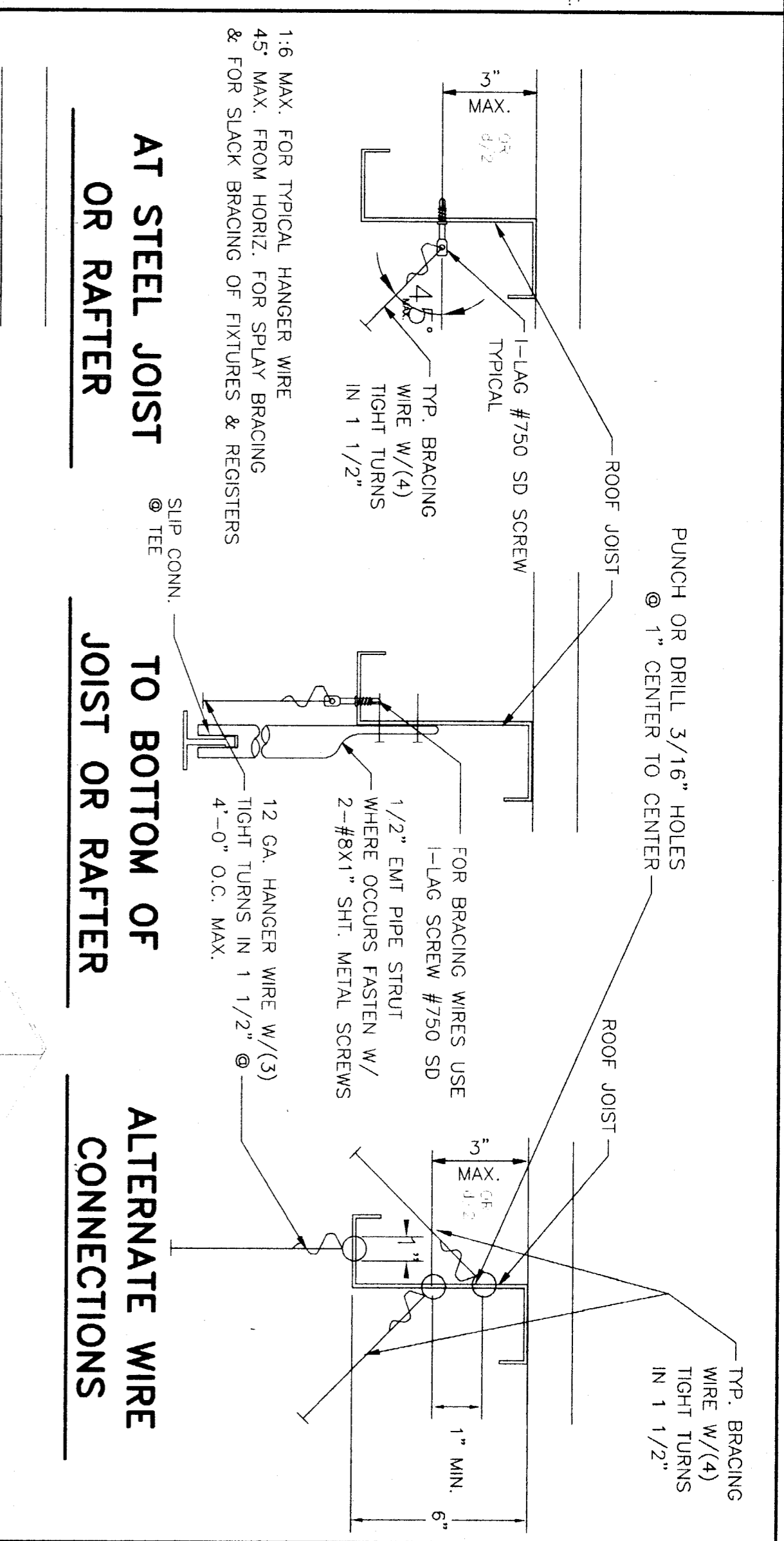
ATTACHMENT FOR CEILING GRID DETAIL
NO SCALE

A 3



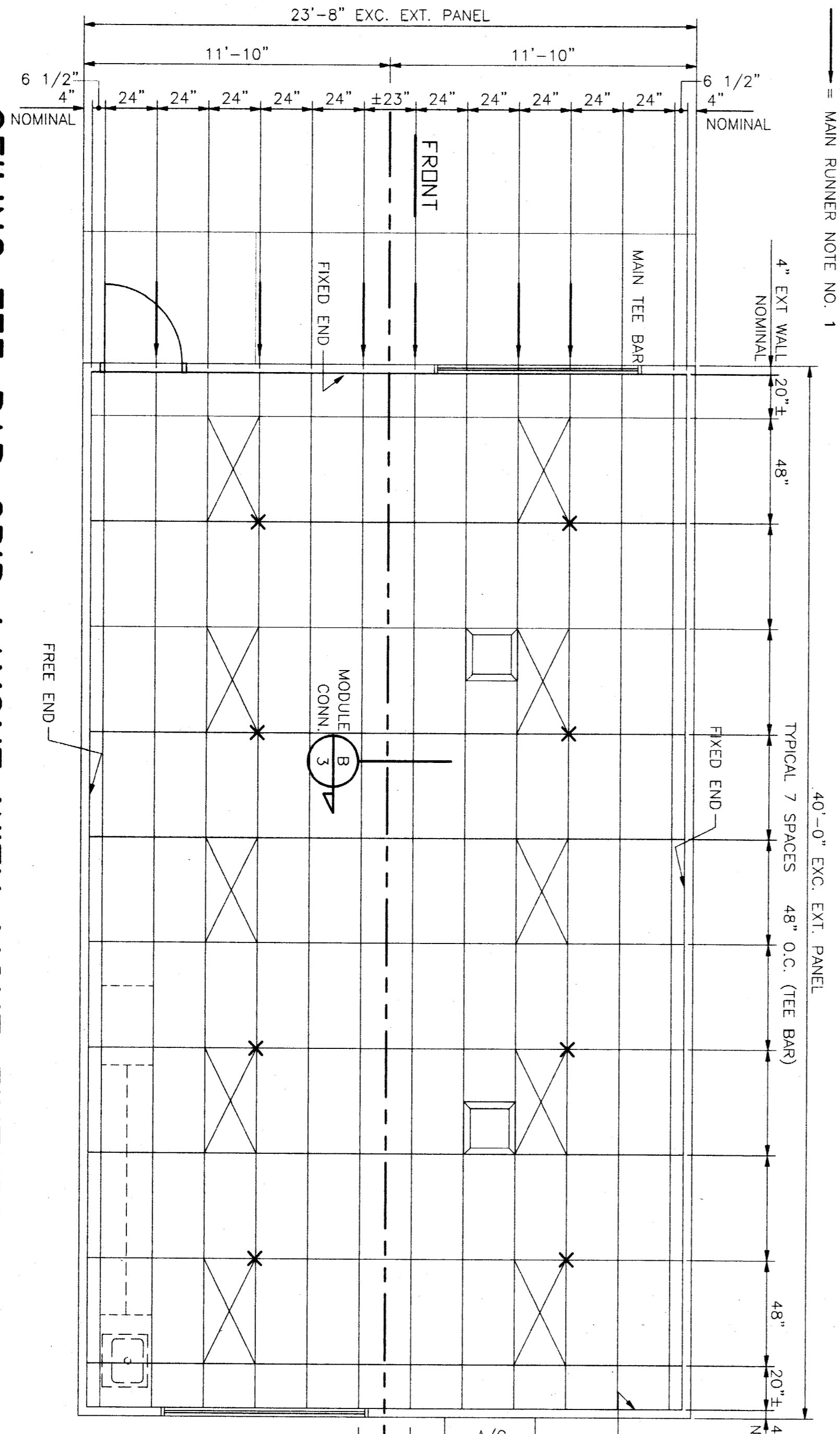
FIXED END
WIRE CONNECTIONS TO GRID
NO SCALE

B 3



ALTERNATE WIRE CONNECTION
NO SCALE

C 3



CEILING TEE BAR GRID LAYOUT WITH LIGHT FIXTURES
SCALE: 1/4" = 1'-0"

THESE DRAWINGS AND / OR SPECIFICATIONS AND / OR CALCULATIONS FOR THE ITEMS LISTED HEREIN HAVE BEEN PREPARED BY OTHER DESIGN PROFESSIONALS WHO ARE LICENSED AND EXAMINED AND HAVE BEEN FOUND TO MEET THE APPROPRIATE REQUIREMENTS OF THE 24 CALIFORNIA CODE OF REGULATIONS AND THE PROJECT SPECIFICATIONS. THE PROJECT DESIGNER ACCEPTS RESPONSIBILITY FOR THE CONSTRUCTION OF THE ITEMS LISTED HEREIN. THE PROJECT DESIGNER DOES NOT ACCEPT RESPONSIBILITY FOR THE FORMATION OF A LIST OF ITEMS HAS BEEN PERFORMED AND A LISTING FOR THE FORMATION OF ACCEPTED DRAWINGS AND ATTACHED. SEE SHEET NO. T-5-11.

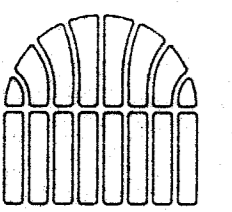
1. METAL SUSPENSION SYSTEMS FOR LAY IN PANEL CEILING
2. 12 GA. (MIN) HANGER WIRES MAY BE USED FOR UP TO AND INCLUDING 4'-0" x 4'-0" GRID SPACING, ALONG MAIN RUNNER. SPLICES WILL NOT BE PERMITTED IN ANY HANGER WIRES UNLESS SPECIFICALLY APPROVED BY DSA.
3. PROVIDE 12 GA. HANGER WIRES WITHIN 8" OF THE ENDS OF ALL MAIN AND CROSS RUNNERS OR AT 1/4 OF THE LENGTH OF THE END TEE, WHICHEVER IS LESS AT THE PERIMETER OF THE CEILING AREA.
4. PROVIDE TRAPEZOID OR OTHER SUPPLEMENTARY SUPPORT MEMBERS AT OBSTRUCTIONS TO MAINTAIN HANGER SPACING. PROVIDE ADDITIONAL HANGERS, STRUTS OR BRACES AS REQUIRED AT ALL CEILING BREAKS, SOFFITS OR DISCONTINUOUS AREA. HANGER WIRES THAT ARE MORE THAN 1 IN 6 OUT OF PLUMB ARE TO HAVE COUNTERBRACED WIRES.
5. CEILING GRID MEMBERS MAY BE ATTACHED TO NOT MORE THAN 2 ADJACENT WALLS. CEILING GRID MEMBERS SHOULD BE AT LEAST 1/2 INCH FREE OF OTHER WALLS. IF WALLS RUN DIAGONALLY TO CEILING GRID SYSTEM, RUNNERS, ONE END OF MAIN AND CROSS RUNNERS SHOULD BE FREE AND A MINIMUM OF 1/2 INCH CLEAR OF WALL.
6. AT THE PERIMETER OF THE CEILING AREA WHERE MAIN OR CROSS RUNNERS ARE NOT CONNECTED TO THE ADJACENT WALL, PROVIDE INTERCONNECTION BETWEEN THE RUNNERS AT THE FREE END TO PREVENT LATERAL SPREADING. A METAL STRUT OR A 16 GA WIRE WITH A POSITIVE MECHANICAL CONNECTION TO THE RUNNERS MAY BE USED WHERE THE PERPENDICULAR DISTANCE FROM THE WALL TO THE FIRST PARALLEL RUNNERS IS 12" OR LESS, THIS INTERLOCK IS NOT REQUIRED.

TABLE A HEAVY DUTY GRID COMPONENTS

MANUFACTURER	MAN TEE	H.D. 4" GROSS TEE	H.D. 2" GROSS TEE
DOMINUS	DX-26	DX-42	DX-216
ARMSTRONG	7301	7341	7323
CHICKO METL	280-01	1284-01	1282-01

DATE: 06-20-02
SCALE: NONE
DRAWN BY: YA
CHECKED BY:
SERIAL NO.

24 X 40
RELOCATABLE
CLASSROOMS



American Modular Systems
333 EAST CARRIAGE CT. MANTeca, CALIFORNIA 95337
PHONE (209) 825-1921 FAX (209) 825-7018

CUSTOMER: BAKERSFIELD UNIFIED SCHOOL DISTRICT
CEILING GRID, DETAILS AND NOTES

DATE: 06-20-02
SCALE: NONE
DRAWN BY: YA
CHECKED BY:
SERIAL NO.

REVISIONS

NO.	DATE	DESCRIPTION

PROJECT NO. SHEET NO. 3