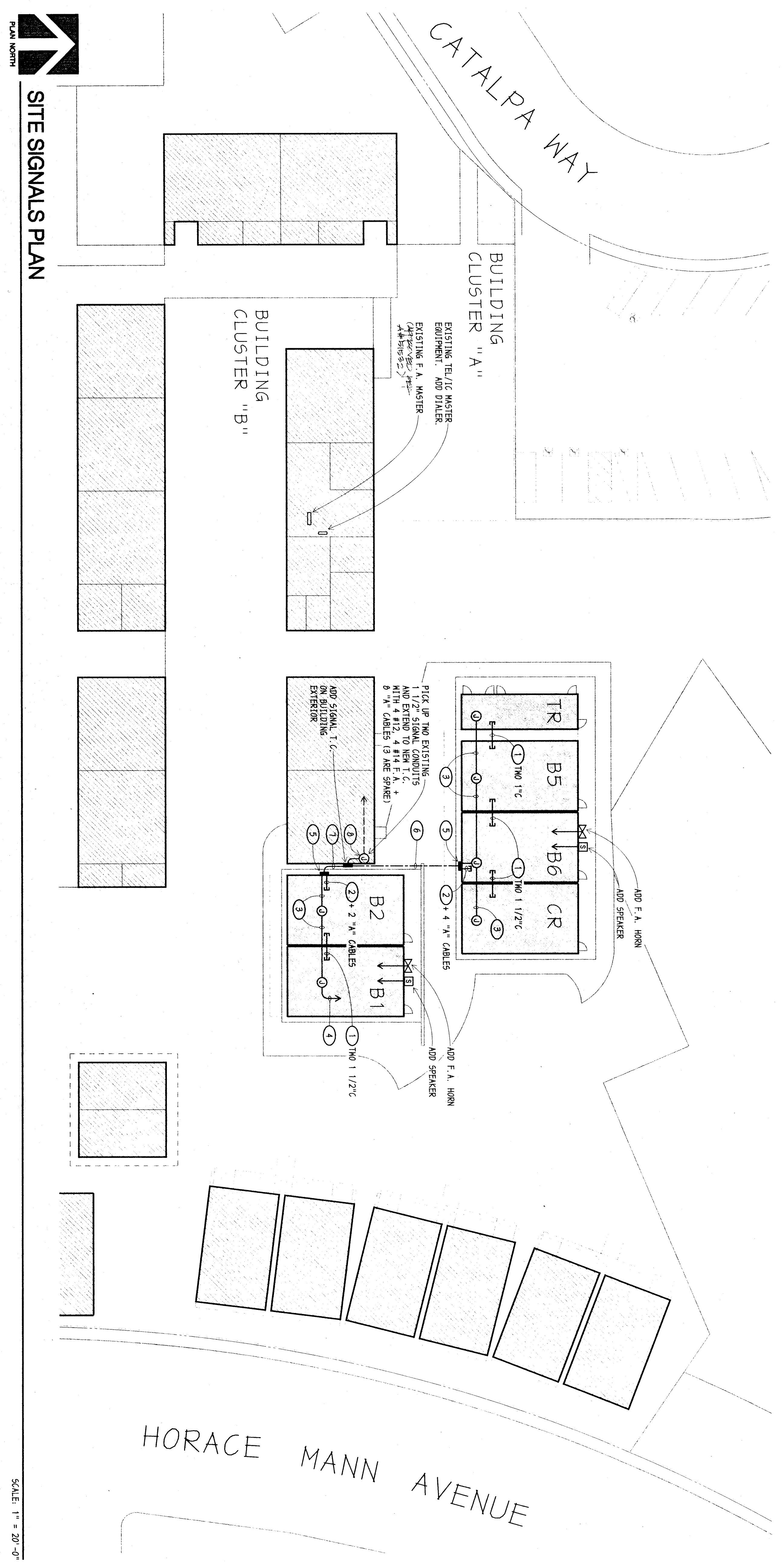


SCALE: 1" = 20'-0"

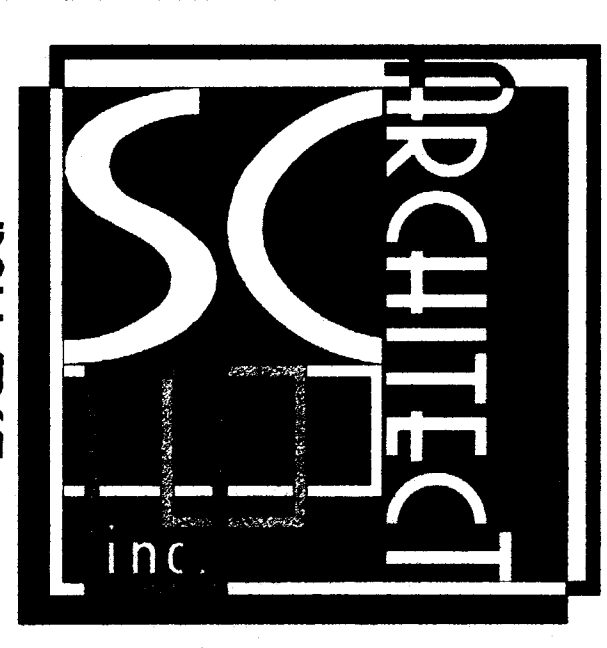
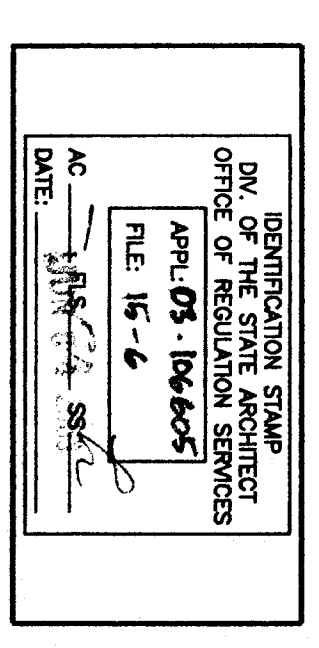


SCALE: 1" = 20'-0"

- NOTES (THIS SHEET ONLY):
- 1) SUB ATTIC TO ATTIC, SIZE AS NOTED.
 - 2) SUB FROM GUTTER TO ATTIC, TWO 1 1/2" C. PULL IN KIDDE FOR TEL/C/PANEL IN ONE 1 1/2" C. - OTHER 1 1/2" C. TO BE SPARE.
 - 3) 1" C. - 4 #12 (E.A. HORNS), 4 #14 (E.A. DETECTORS).
 - 4) CONNECT F.A. DEVICES PER FLOOR PLANS. TYPICAL EACH RELOCATABLE.
 - 5) ADD GUTTER AT +12" - 16" x 18" x 6" - NEMA 3B.
 - 6) 1 1/2" C. - FOUR 1/2" C. SPARE; 1" C. - 4 #14, 4 #12 F.A.
 - 7) 1 1/2" C. - TWO 1" C. SPARE; 1 1/2" C. SPARE; 1" C. - 4 #14, 4 #12 F.A.
 - 8) OWNER TO PULL TEL/C AND F.A. CONDUCTORS FROM MASTER EQUIPMENT TO THIS BOX.

MARK	DATE	REVISIONS

HORACE MANN ELEMENTARY
SITE IMPROVEMENTS FOR PORTABLE BUILDINGS
 FOR
BAKERSFIELD CITY SCHOOL DISTRICT
 BAKERSFIELD, KERN COUNTY, CALIFORNIA



1301 L STREET
 BAKERSFIELD, CA 93301
 PH: (661) 327-1632
 FAX: (661) 327-2339

REGISTERED PROFESSIONAL ENGINEER
 No. 3198
 Exp. 09/30/06
 State of California
 CONSULTING ELECTRICAL ENGINEERS
CONNELLYS ELECTRICAL GROUP, INC.
 4000 W. BROADWAY
 VANALDEAN, CALIFORNIA 93292-6705

SITE POWER AND SIGNALS PLANS

JOB NO. 1053
 DRAWN : [Signature]
 CHECKED : [Signature]
 DATE : 09/17/02
E.1
 OF 2 SHEETS