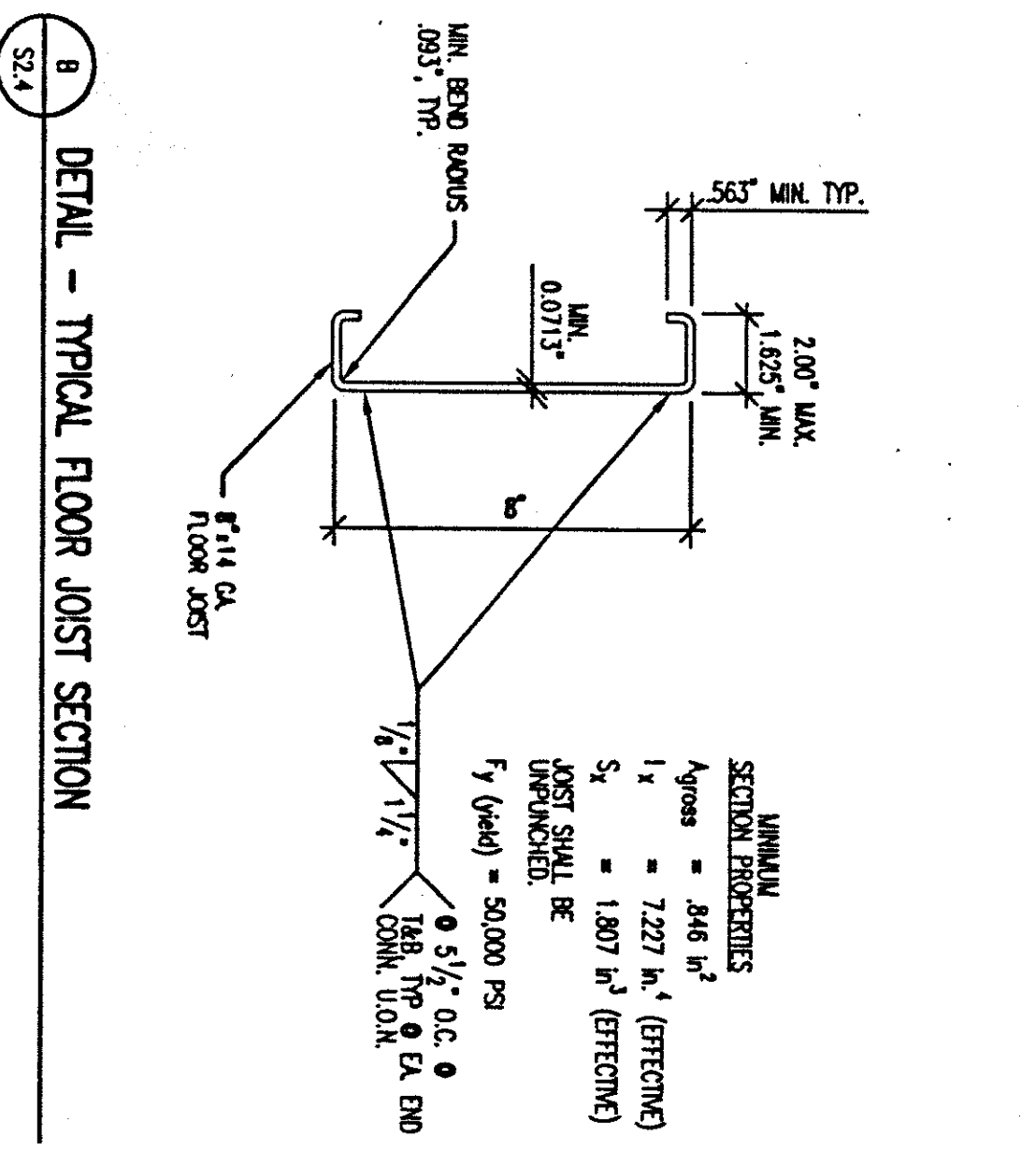
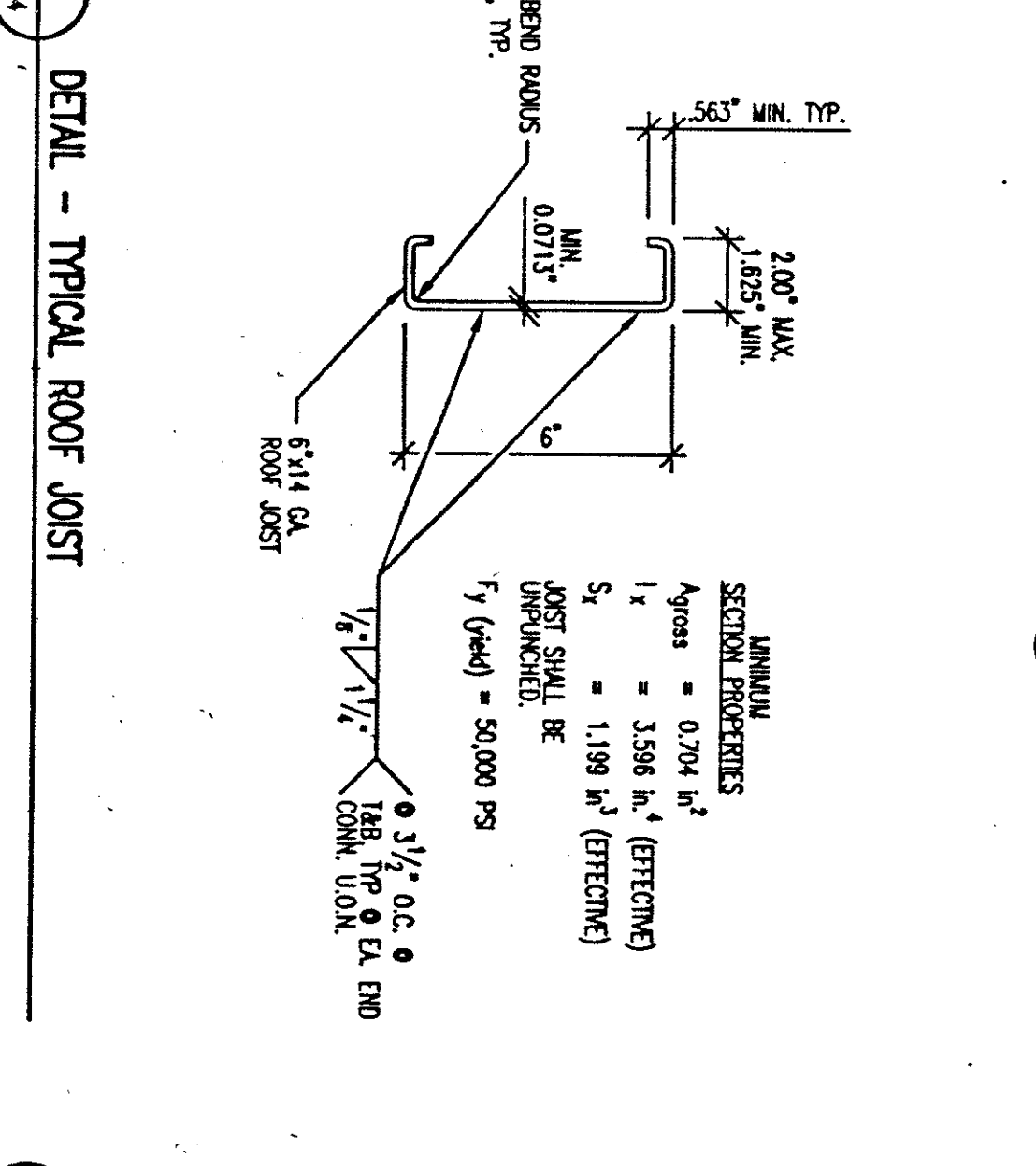


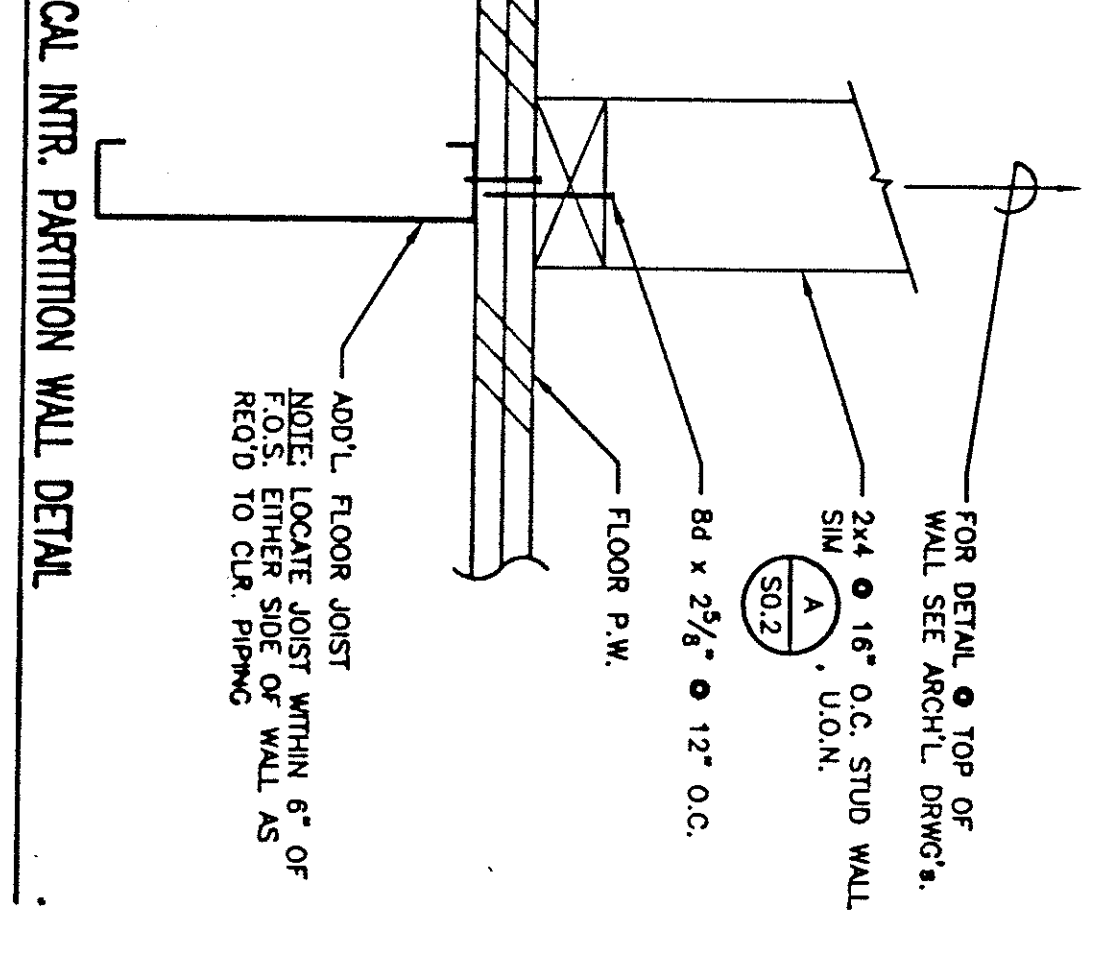
A DET. - BRACES IN FLOOR WOOD STUD MODULE LINE
SCALE: 1"=1'-0"



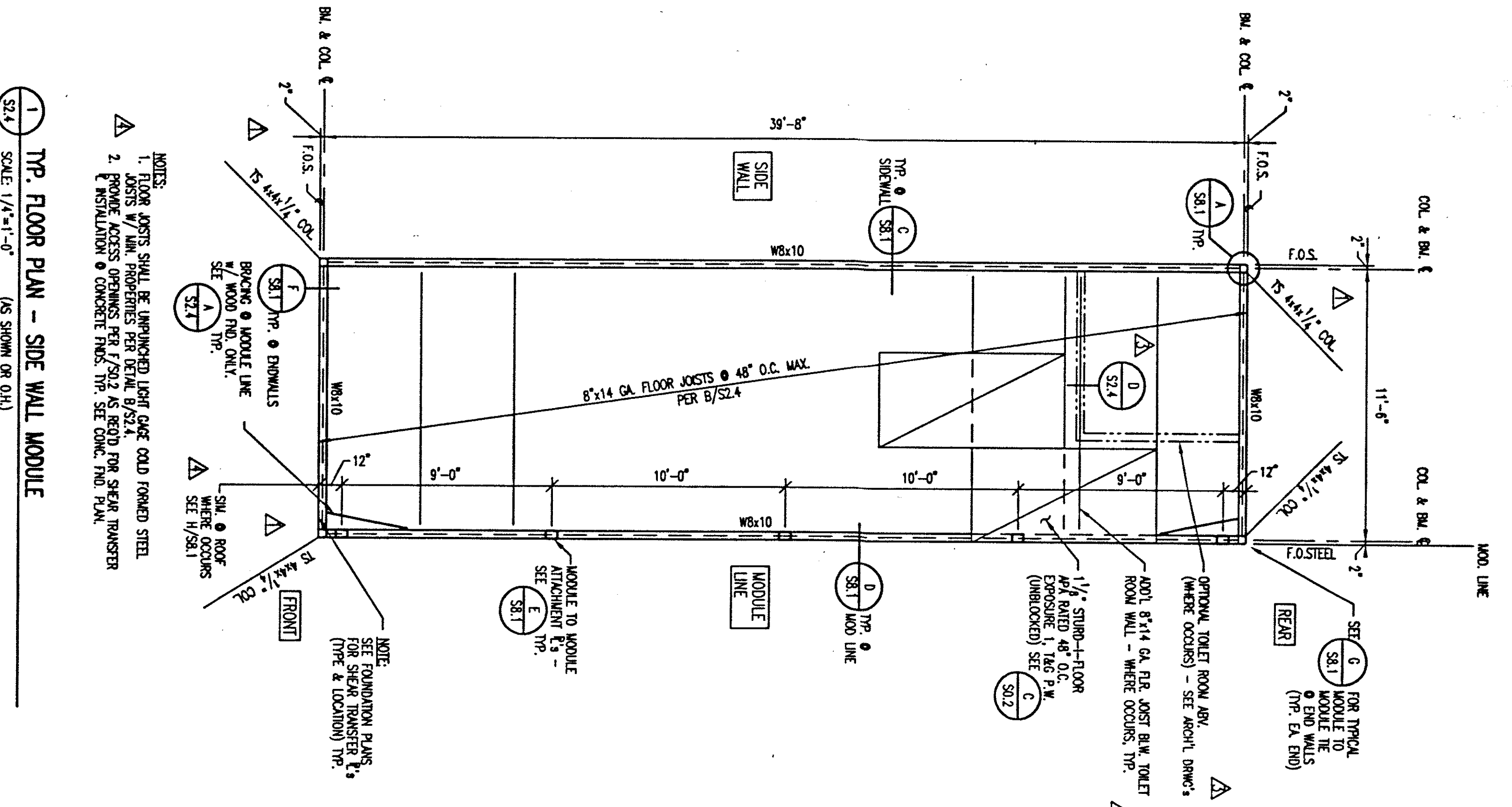
B DETAIL - TYPICAL FLOOR JOIST SECTION
SCALE: 1/4"=1'-0" (AS SHOWN OR Q.H.)



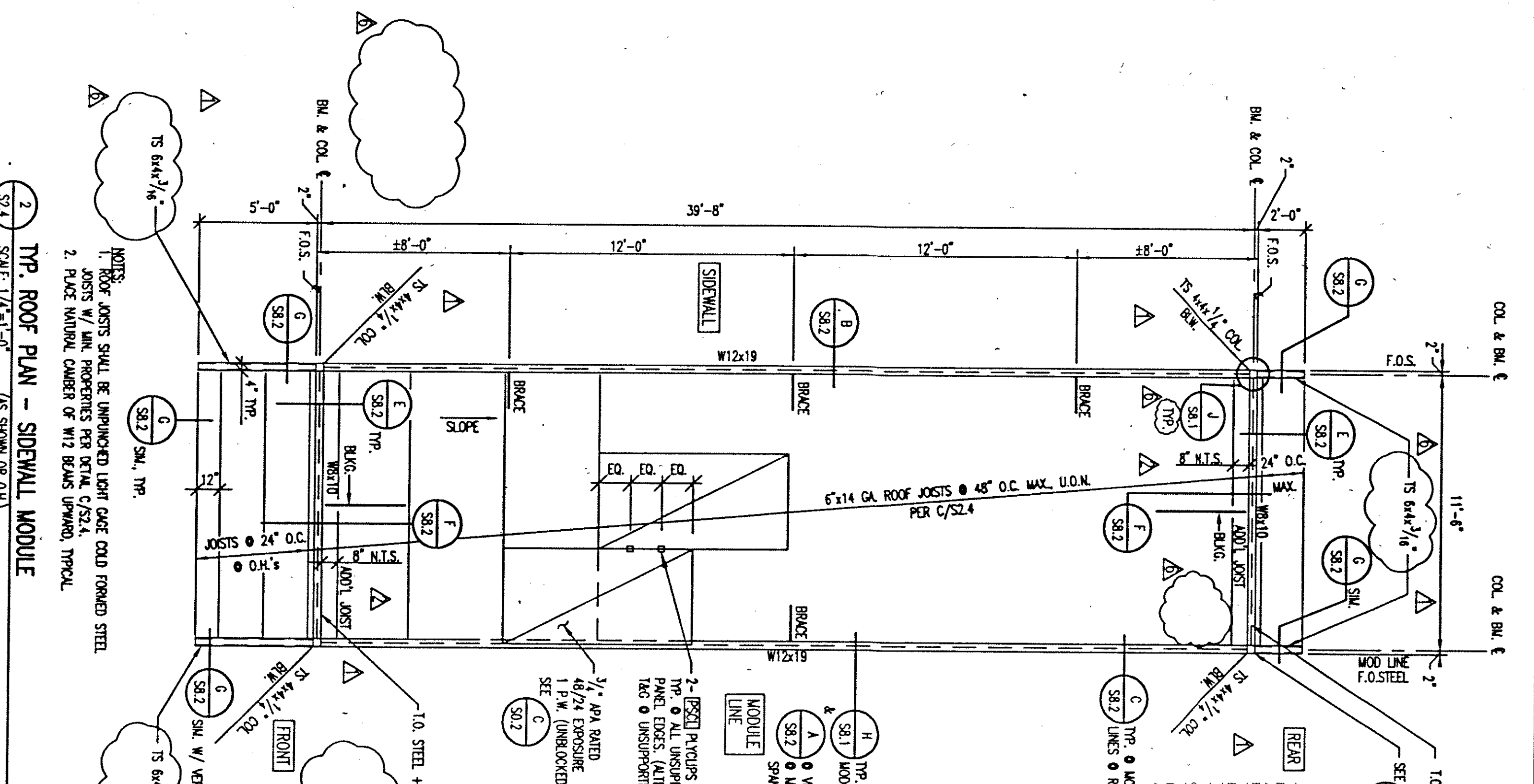
C DETAIL - TYPICAL ROOF JOIST
SCALE: 1/4"=1'-0" (AS SHOWN OR Q.H.)



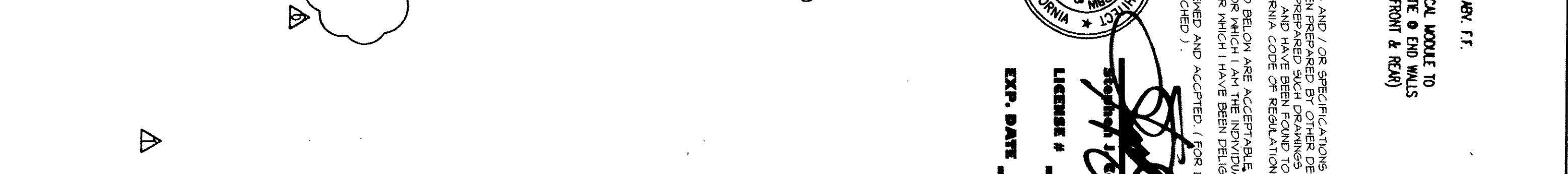
D TYPICAL INTR. PARTITION WALL DETAIL
SCALE: 1/4"=1'-0" (AS SHOWN OR Q.H.)



1 TYP. FLOOR PLAN - SIDE WALL MODULE
SCALE: 1/4"=1'-0" (AS SHOWN OR Q.H.)



2 TYP. ROOF PLAN - SIDEWALL MODULE
SCALE: 1/4"=1'-0" (AS SHOWN OR Q.H.)



D TYPICAL INTR. PARTITION WALL DETAIL
SCALE: 1/4"=1'-0" (AS SHOWN OR Q.H.)

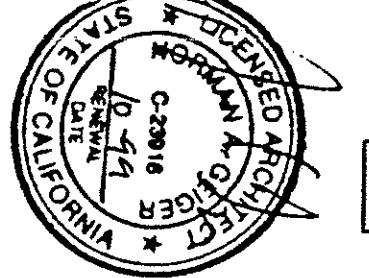
- NOTES:**
- FLOOR JOISTS SHALL BE UNPUNCHED LIGHT GAUGE COLD FORMED STEEL JOISTS W/ MIN. PROPERTIES PER DETAIL S/S2.4.
 - PROVIDE ACCESS OPENINGS PER DETAIL S/S2.4 AS REQ'D FOR STEEL BRACERS.
 - INSULATION & CONCRETE FINIS. TYP. SEE CONC. FND. PLAN.

- NOTES:**
- ROOF JOISTS SHALL BE UNPUNCHED LIGHT GAUGE COLD FORMED STEEL JOISTS W/ MIN. PROPERTIES PER DETAIL S/S2.4.
 - FLOOR JOIST CENTER OF W/2 BEAMS UNPUNCHED TYPICAL.

THESE DRAWINGS AND / OR SPECIFICATIONS AND / OR CALCULATIONS FOR THE ITEMS LISTED BELOW HAVE BEEN PREPARED BY OTHER DESIGN PROFESSIONALS WHO ARE LICENSED AND AUTHORIZED TO PREPARE SUCH DRAWINGS IN THIS STATE. THESE DRAWINGS HAVE BEEN EXAMINED BY RESUB CODE DESIGNATION AND THE PROJECT SPECIFICATIONS PREPARED BY THE ARCHITECT AND / OR ENGINEER. THE DESIGNER'S RESPONSIBILITY FOR THE DESIGN OF THE ITEMS LISTED BELOW ARE ACCEPTABLE FOR CONSTRUCTION INTO THE CONSTRUCTION OF THE PROJECT. THE DESIGNER'S RESPONSIBILITY FOR THE DESIGN OF THE ITEMS LISTED BELOW ARE ACCEPTABLE FOR CONSTRUCTION INTO THE CONSTRUCTION OF THE PROJECT. THE DESIGNER'S RESPONSIBILITY FOR THE DESIGN OF THE ITEMS LISTED BELOW ARE ACCEPTABLE FOR CONSTRUCTION INTO THE CONSTRUCTION OF THE PROJECT.

REGISTERED ARCHITECT
M.C. 16788
DATE: 1-15-99
EXP. DATE: 1/30/98

NOTE: SEE S0.3 & S8.3 TYP. FOR METAL STUD WALL ALTERNATE



REVISIONS

NO.	DATE	DESCRIPTION
1	10-14-97	AS NOTED
2	10-14-97	AS NOTED
3	10-14-97	AS NOTED
4	10-14-97	AS NOTED
5	10-14-97	AS NOTED
6	10-14-97	AS NOTED
7	10-14-97	AS NOTED
8	10-14-97	AS NOTED
9	10-14-97	AS NOTED
10	10-14-97	AS NOTED

DATE: 10-14-97

ANDERSON & DOIG STRUCTURAL ENGINEERS
A CALIFORNIA CORPORATION
10308 PLACER LANE, STE. 100, SACRAMENTO, CA 95827-2571
(916) 366-9622

PACESETTER INDUSTRIES, INC.
P.O. BOX 1131, MODESTO, CA 95353 (209) 521-1600

24x40 RELOCATABLE BUILDING

TYPICAL FLOOR & ROOF PLANS & DETAILS - SIDEWALL MODULES

REVISIONS

NO.	DATE	DESCRIPTION
1	5-27-97	BY
2	6-30-97	BY
3	7-29-97	BY
4	8-27-97	BY
5	10-14-97	BY