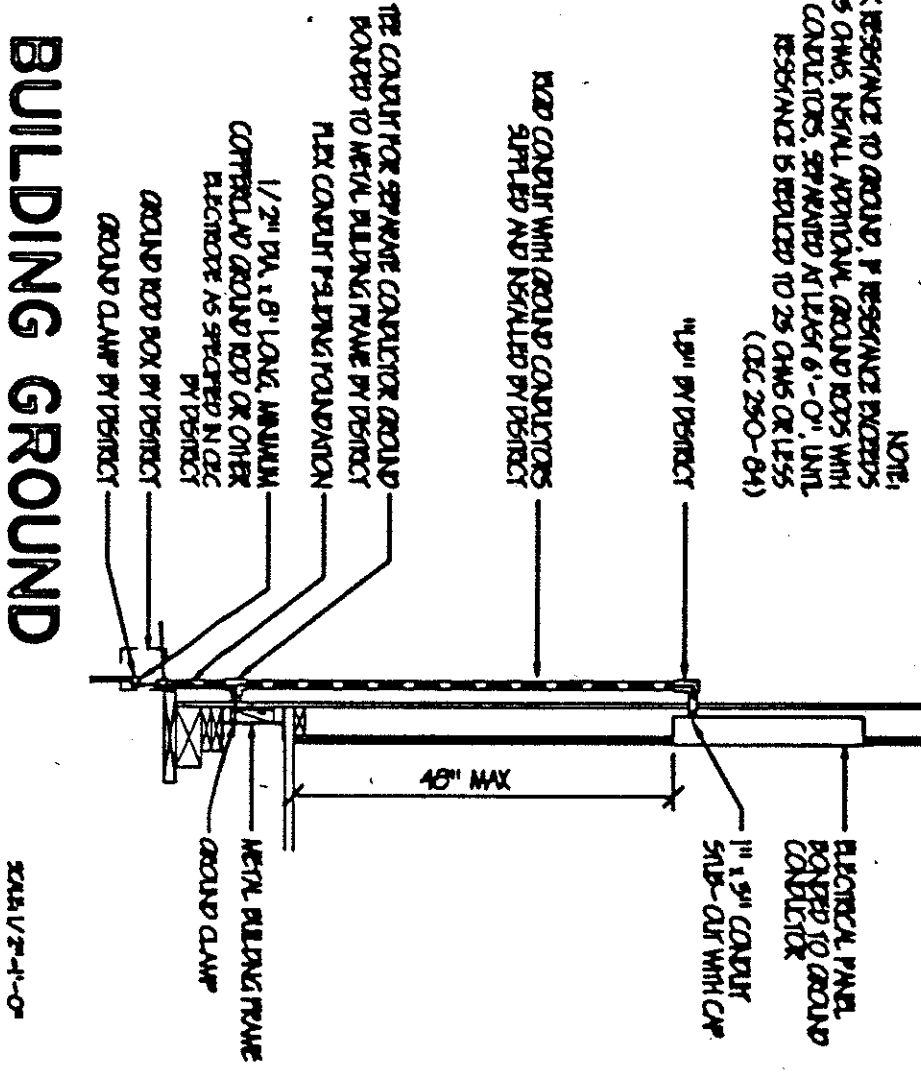
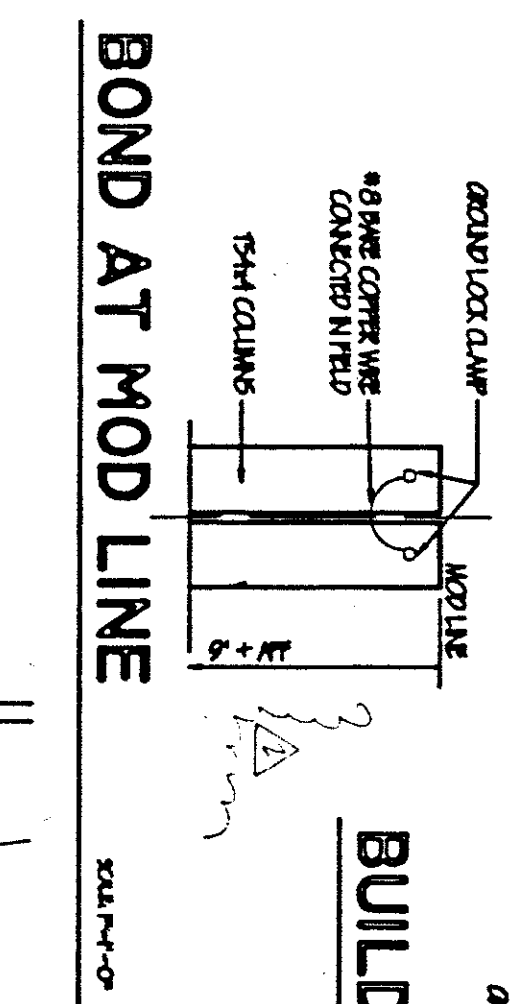
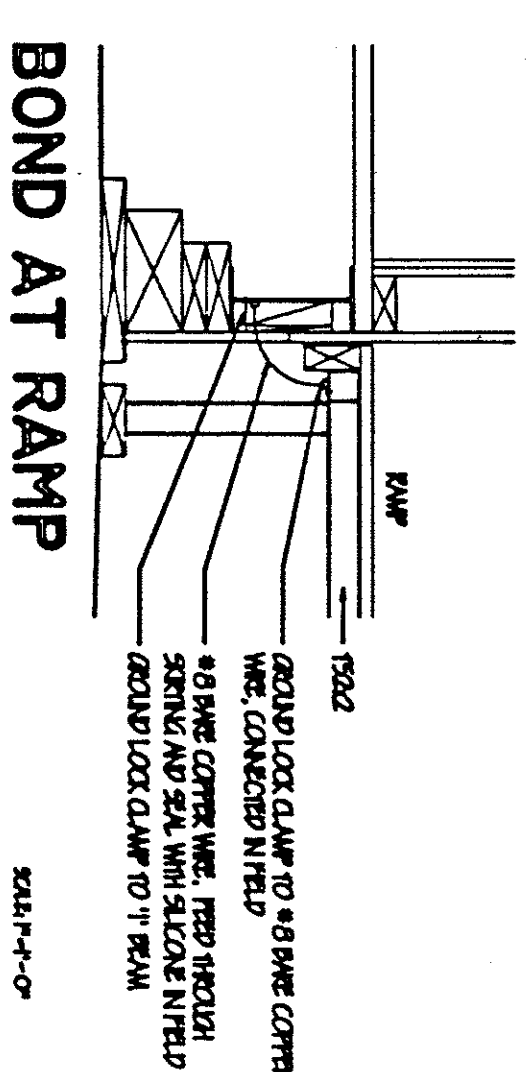


PANEL SCHEDULE L-1

| | | | | |
|------------------|------|-----|------|-------------|
| DESCRIPTION | LOAD | BKR | LOAD | DESCRIPTION |
| RECEPTS CLOCK | 1800 | 20 | 60 | HVC UNIT |
| RECEPTS | 1825 | 20 | 2 | |
| INTERIOR LIGHTS | 900 | 20 | | |
| NIT & EXT LIGHTS | 995 | 20 | | |
| | | | 1 | |
| | | | 2 | |
| | | | 3 | |
| | | | 4 | |
| | | | 5 | |
| | | | 6 | |
| | | | 7 | |
| | | | 8 | |
| | | | 9 | |
| | | | 10 | |
| | | | 11 | |
| | | | 12 | |
| | | | 13 | |
| | | | 14 | |
| | | | 15 | |
| | | | 16 | |
| | | | 17 | |
| | | | 18 | |
| | | | 19 | |
| | | | 20 | |
| | | | 21 | |
| | | | 22 | |
| | | | 23 | |
| | | | 24 | |

LIGHTING FIXTURE SCHEDULE

| TYPE | MANUFACTURER | LAMP'S | WATT VA | WARRANTY | REMARKS |
|------|--|----------------------|---------|----------|---|
| A | 2" x 4" RECESSED ENERGY SAVING BALLAST (MORROW OR EQUIV. E20-440E) | 4-40W | 180 VA | 3 YEAR | T-8 LAMP'S OPTIONAL |
| B | REAR WALL 3714 OR EQUIV. ENCLUSTION 7500 BL | 1-11.5 7 WATT 9 WATT | 97 VA | | WALL - SURFACE MOUNT BALLAST OR #8 W5 PER STRIP TO SLID |
| | | | | | FLUORESCENT TAPER FLOOR |

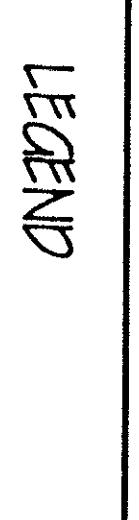


ELECTRICAL NOTES

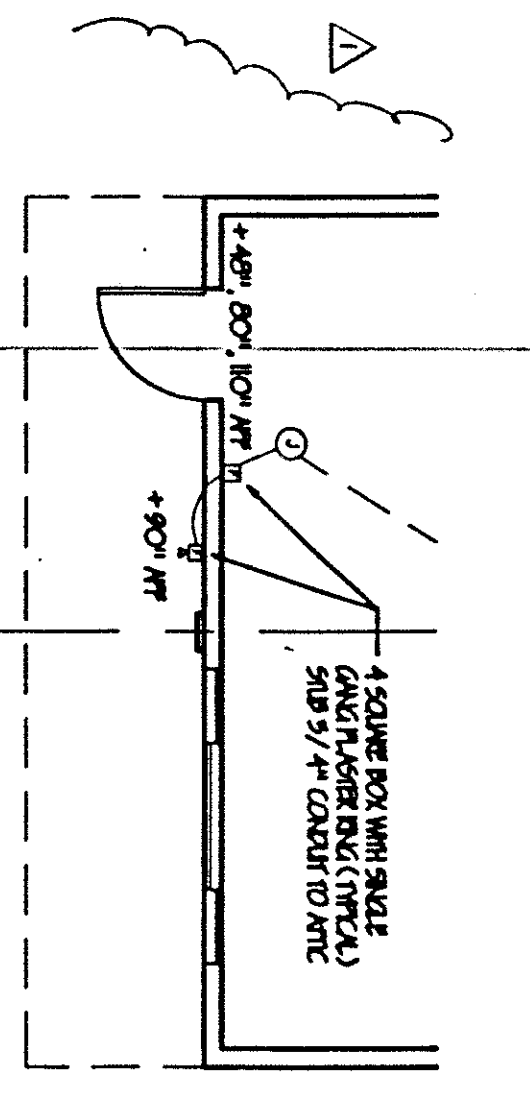
POWER 2-120V 50/60 HZ TO BE INSTALLED AT EACH END OF BUILDING. ALL ELECTRICAL WORK SHALL BE IN ACCORDANCE WITH THE NATIONAL ELECTRICAL CODE (NEC) 1997, AS AMENDED BY ALL APPLICABLE STATE AND LOCAL CODES. ALL WIRING TO BE IN ACCORDANCE WITH THE NATIONAL ELECTRICAL CODE (NEC) 1997, AS AMENDED BY ALL APPLICABLE STATE AND LOCAL CODES. ALL ELECTRICAL WORK SHALL BE IN ACCORDANCE WITH THE NATIONAL ELECTRICAL CODE (NEC) 1997, AS AMENDED BY ALL APPLICABLE STATE AND LOCAL CODES. ALL ELECTRICAL WORK SHALL BE IN ACCORDANCE WITH THE NATIONAL ELECTRICAL CODE (NEC) 1997, AS AMENDED BY ALL APPLICABLE STATE AND LOCAL CODES. ALL ELECTRICAL WORK SHALL BE IN ACCORDANCE WITH THE NATIONAL ELECTRICAL CODE (NEC) 1997, AS AMENDED BY ALL APPLICABLE STATE AND LOCAL CODES.

GENERAL NOTES

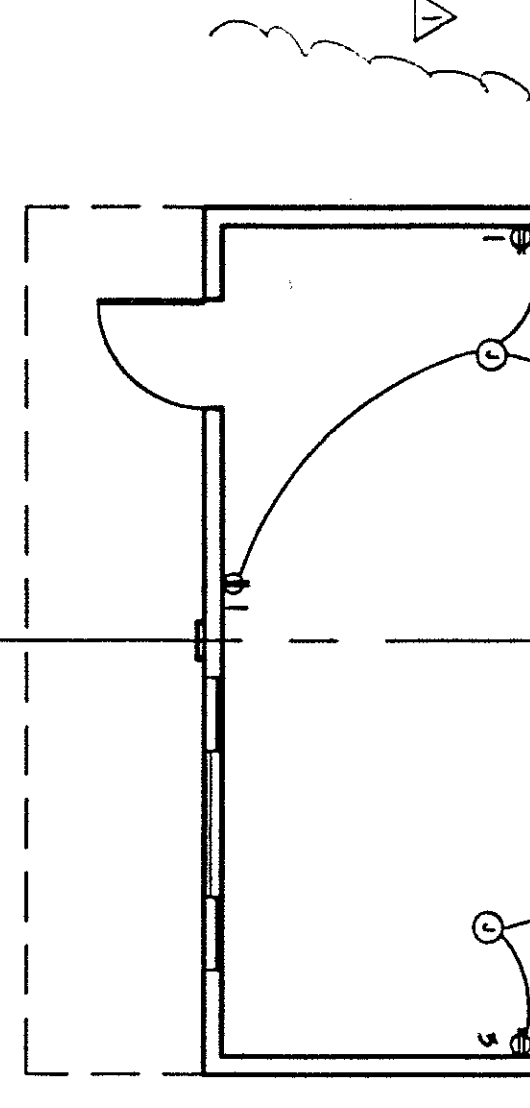
VERTICAL WIRING SHALL BE IN 1/2" DIA. OR FLAT WIRE SHALL HAVE COVER RATING MINIMUM 60. CHANGES 5, 7, 8, AND 10.



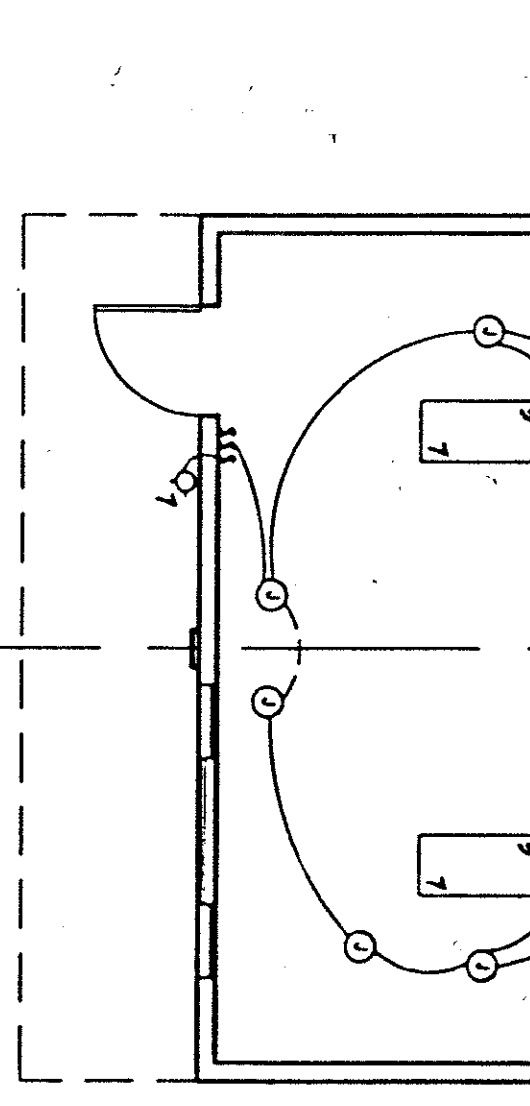
24'x40' SIGNAL PLAN-ALT



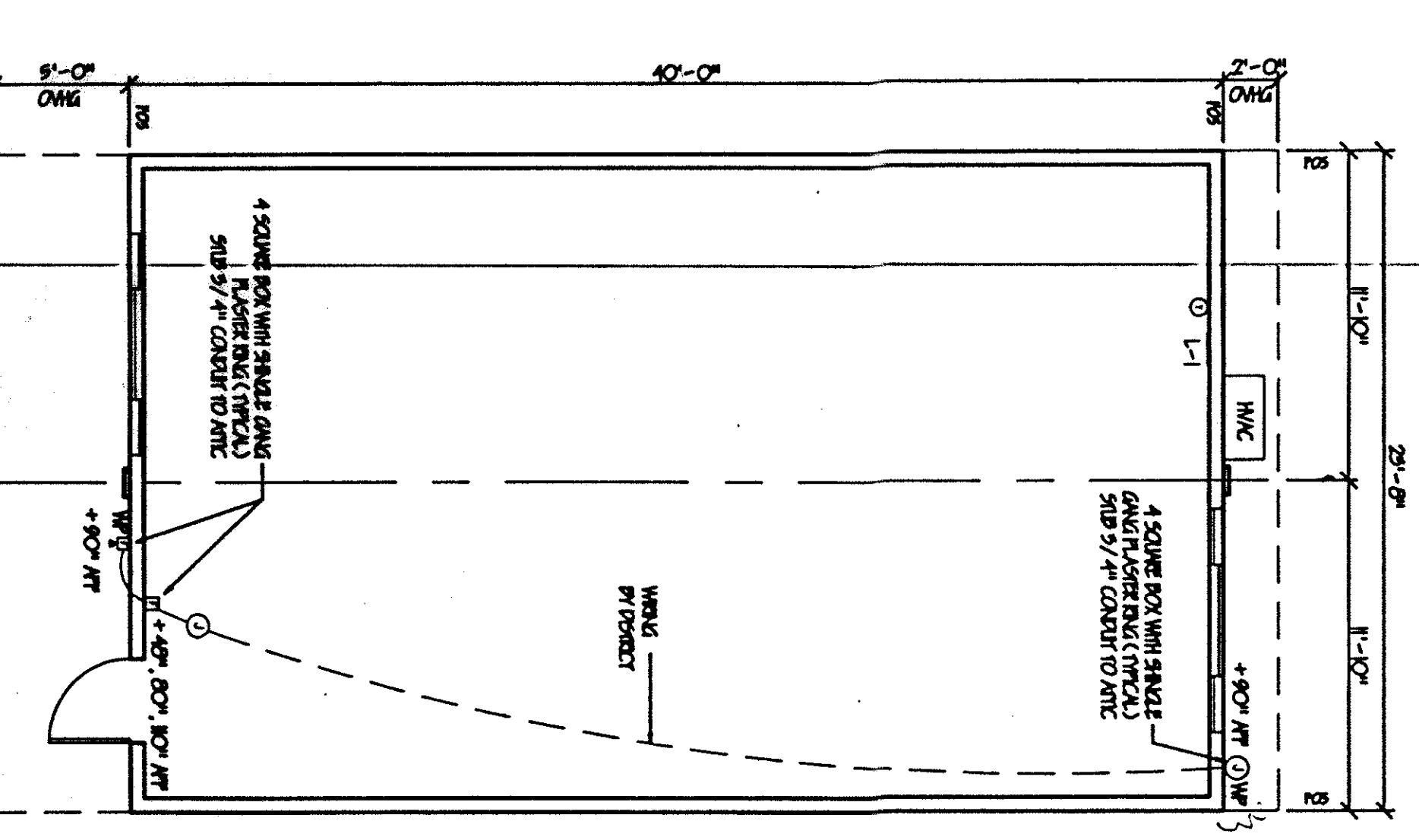
24'x40' POWER PLAN-ALT



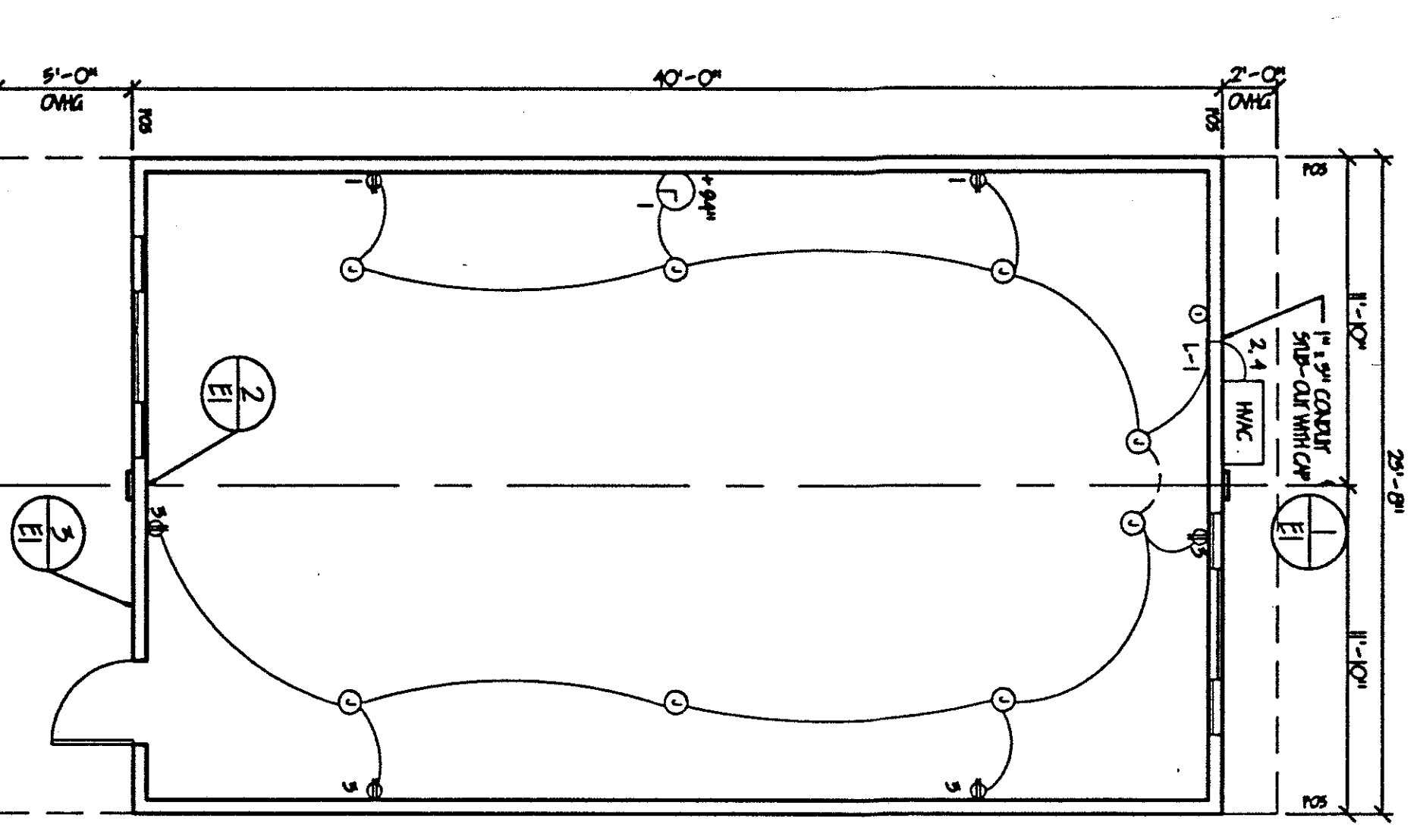
24'x40' LIGHTING PLAN-ALT



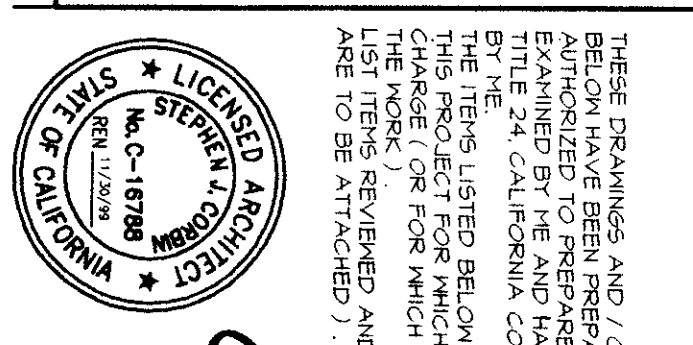
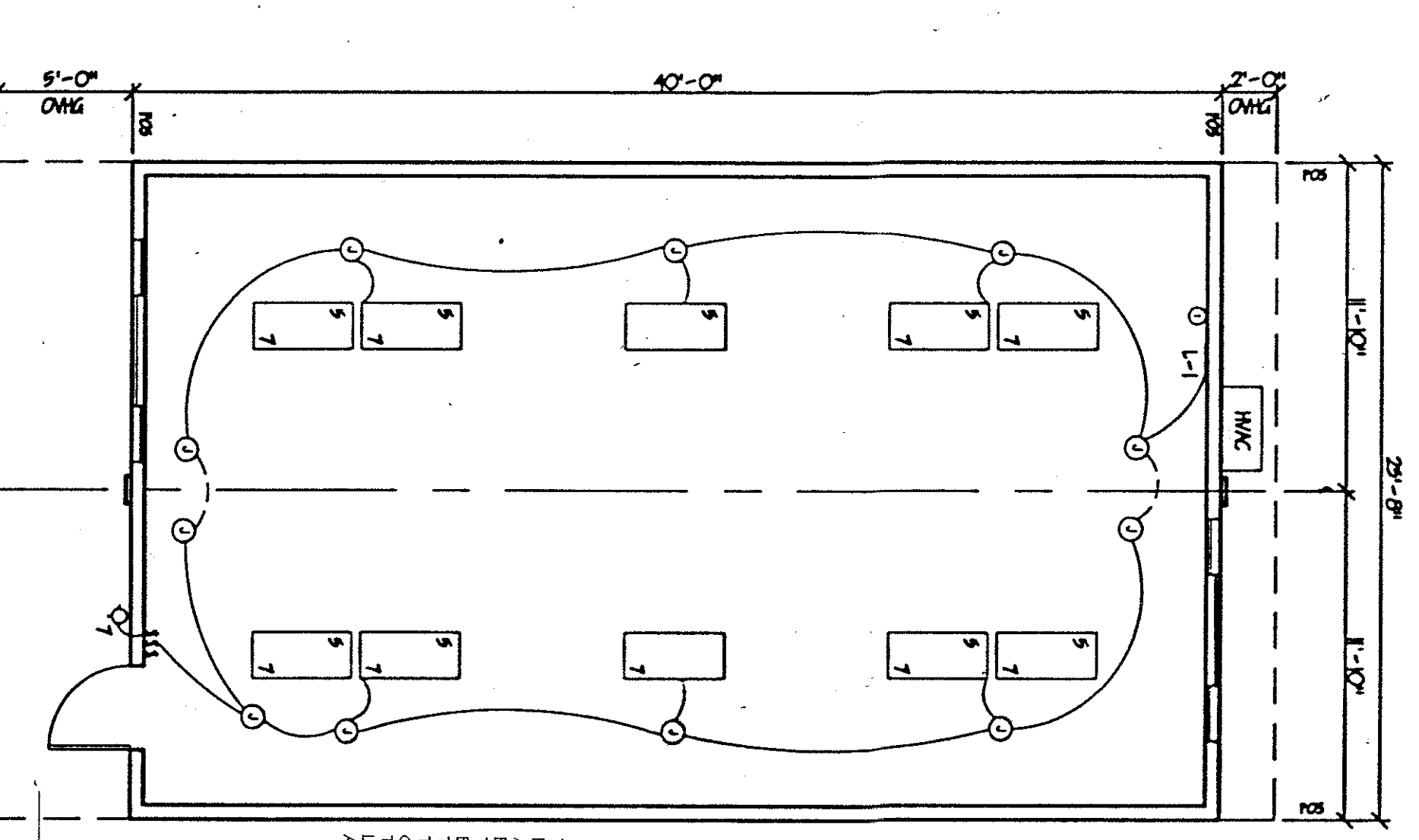
24'x40' SIGNAL PLAN



24'x40' POWER PLAN



24'x40' LIGHTING PLAN



THESE DRAWINGS AND ALL OR CALCULATIONS FOR THE SAME HAVE BEEN PREPARED BY THE ENGINEER AND EXAMINED BY THE ENGINEER AND FOUND TO BE IN ACCORDANCE WITH THE REQUIREMENTS OF THE CALIFORNIA ELECTRICAL CODE. THE ENGINEER HAS BEEN ADVISED BY THE CLIENT THAT THE WORK DESCRIBED HEREIN IS NOT TO BE CONSIDERED AS PART OF A LARGER PROJECT AND THAT THE ENGINEER IS NOT TO BE RESPONSIBLE FOR THE DESIGN OF ANY OTHER PARTS OF THE PROJECT.

APPROVALS

DATE: 11-5-99

PROJECT NO: 91-05

PACESETTER INDUSTRIES, INC. P.O. BOX 1131, MODESTO, CA 95353 (209) 521-1600

24x40 RELOCATABLE BUILDING

NORMAN A. GEIGER P.O. BOX 41054 Sacramento, CA 95841 (916) 332-2453 FAX (916) 332-2453 PHONE

GRAPHICS ARCHITECTURAL SERVICES GEIGER

| SHEET NO. | DATE | REVISIONS |
|-----------|--------------|-----------|
| 01 | APR 26, 1997 | |
| 02 | MAY 15, 1997 | |
| 03 | JUN 20, 1997 | |
| 04 | AUG 11, 1997 | |
| 05 | AUG 26, 1997 | |
| 06 | | |
| 07 | | |
| 08 | | |
| 09 | | |
| 10 | | |
| 11 | | |
| 12 | | |
| 13 | | |
| 14 | | |
| 15 | | |
| 16 | | |
| 17 | | |
| 18 | | |
| 19 | | |
| 20 | | |
| 21 | | |
| 22 | | |
| 23 | | |
| 24 | | |
| 25 | | |
| 26 | | |
| 27 | | |
| 28 | | |
| 29 | | |
| 30 | | |
| 31 | | |
| 32 | | |
| 33 | | |
| 34 | | |
| 35 | | |
| 36 | | |
| 37 | | |
| 38 | | |
| 39 | | |
| 40 | | |
| 41 | | |
| 42 | | |
| 43 | | |
| 44 | | |
| 45 | | |
| 46 | | |
| 47 | | |
| 48 | | |
| 49 | | |
| 50 | | |
| 51 | | |
| 52 | | |
| 53 | | |
| 54 | | |
| 55 | | |
| 56 | | |
| 57 | | |
| 58 | | |
| 59 | | |
| 60 | | |
| 61 | | |
| 62 | | |
| 63 | | |
| 64 | | |
| 65 | | |
| 66 | | |
| 67 | | |
| 68 | | |
| 69 | | |
| 70 | | |
| 71 | | |
| 72 | | |
| 73 | | |
| 74 | | |
| 75 | | |
| 76 | | |
| 77 | | |
| 78 | | |
| 79 | | |
| 80 | | |
| 81 | | |
| 82 | | |
| 83 | | |
| 84 | | |
| 85 | | |
| 86 | | |
| 87 | | |
| 88 | | |
| 89 | | |
| 90 | | |
| 91 | | |
| 92 | | |
| 93 | | |
| 94 | | |
| 95 | | |
| 96 | | |
| 97 | | |
| 98 | | |
| 99 | | |
| 100 | | |

E1