

NO.	ROOM OR AREA	WALLS	FLOOR	CEILING	NOTES
1	CLASSROOM	W-1	F-1	C-1	CONV. W/ WALLS OF CALIFORNIA
2	RESTROOM	W-2	F-2	C-2	CONV. W/ WALLS OF CALIFORNIA

- FINISH SCHEDULE (SEE SPEC SHEET A1)**
- CONV. W/ WALLS OF CALIFORNIA  
SANDWICH PANEL CEILING, 22 GAUZE INTERLOCKING GALVALUME SIDING, 3/4" X 1/2" CHINA BLOCK WITH 1/2" GYPSUM BOARD FINISH, 1/2" X 1/2" CHINA BLOCK WITH 1/2" GYPSUM BOARD FINISH
- WALLS (W-1) 1/2" GYPSUM BOARD OVER 1/2" CHINA BLOCK WITH 1/2" GYPSUM BOARD FINISH
- WALLS (W-2) 1/2" GYPSUM BOARD OVER 1/2" CHINA BLOCK WITH 1/2" GYPSUM BOARD FINISH
- CEILING (C-1) ACCENTRAL LIGHTING AND CEILING PANELS

NO.	FRAME	TYPE	FINISH	GLASS	TYPE	REAR	FRONT	SL	NOTES
1	2'-0" X 4'-0"	ALUM.	ALUM.	6-1/2	6-1/2	6-1/2	6-1/2	ALUMINUM SCREENS ON OPERABLE PANELS	

- WINDOW TYPES**
- 8'-0" X 4'-0"
- 1'-0" X 4'-0"
- 2'-0" X 4'-0"

NO.	FRAME	TYPE	FINISH	GLASS	TYPE	REAR	FRONT	SL	NOTES
1	2'-0" X 8'-0"	HM	HM	1/4"	1/4"	1/4"	1/4"	1/4"	1/2" GYPSUM BOARD OVER 1/2" CHINA BLOCK WITH 1/2" GYPSUM BOARD FINISH

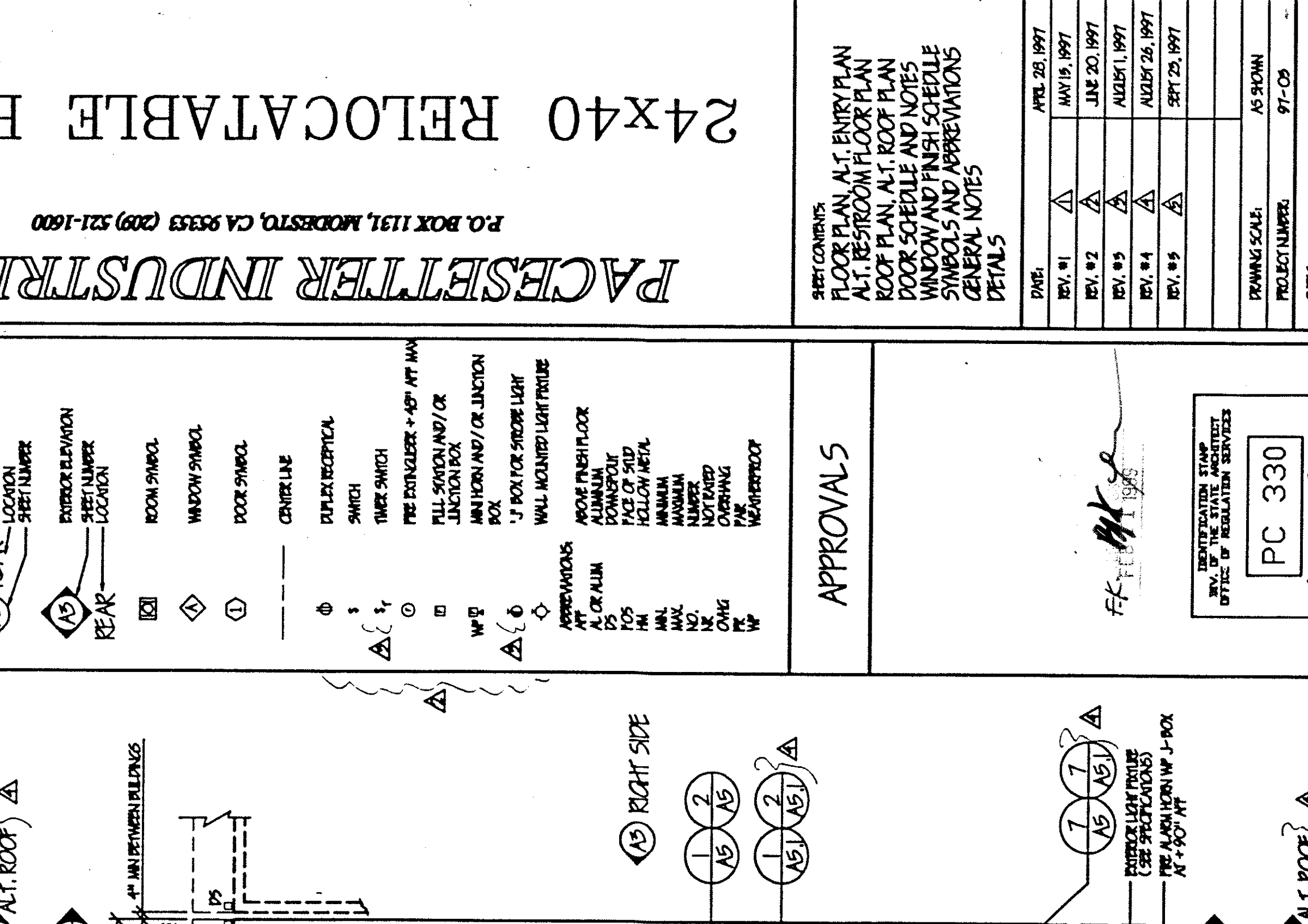
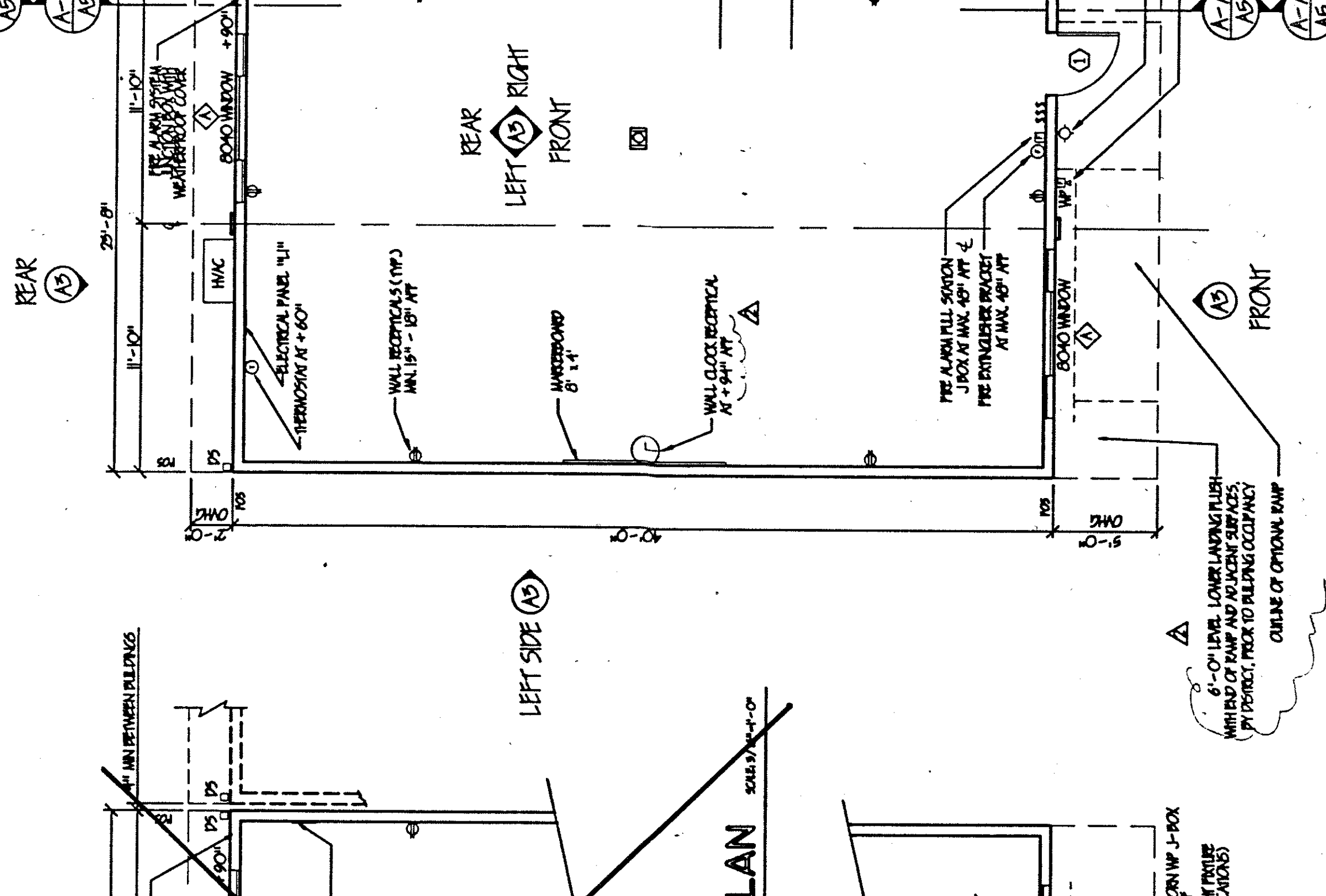
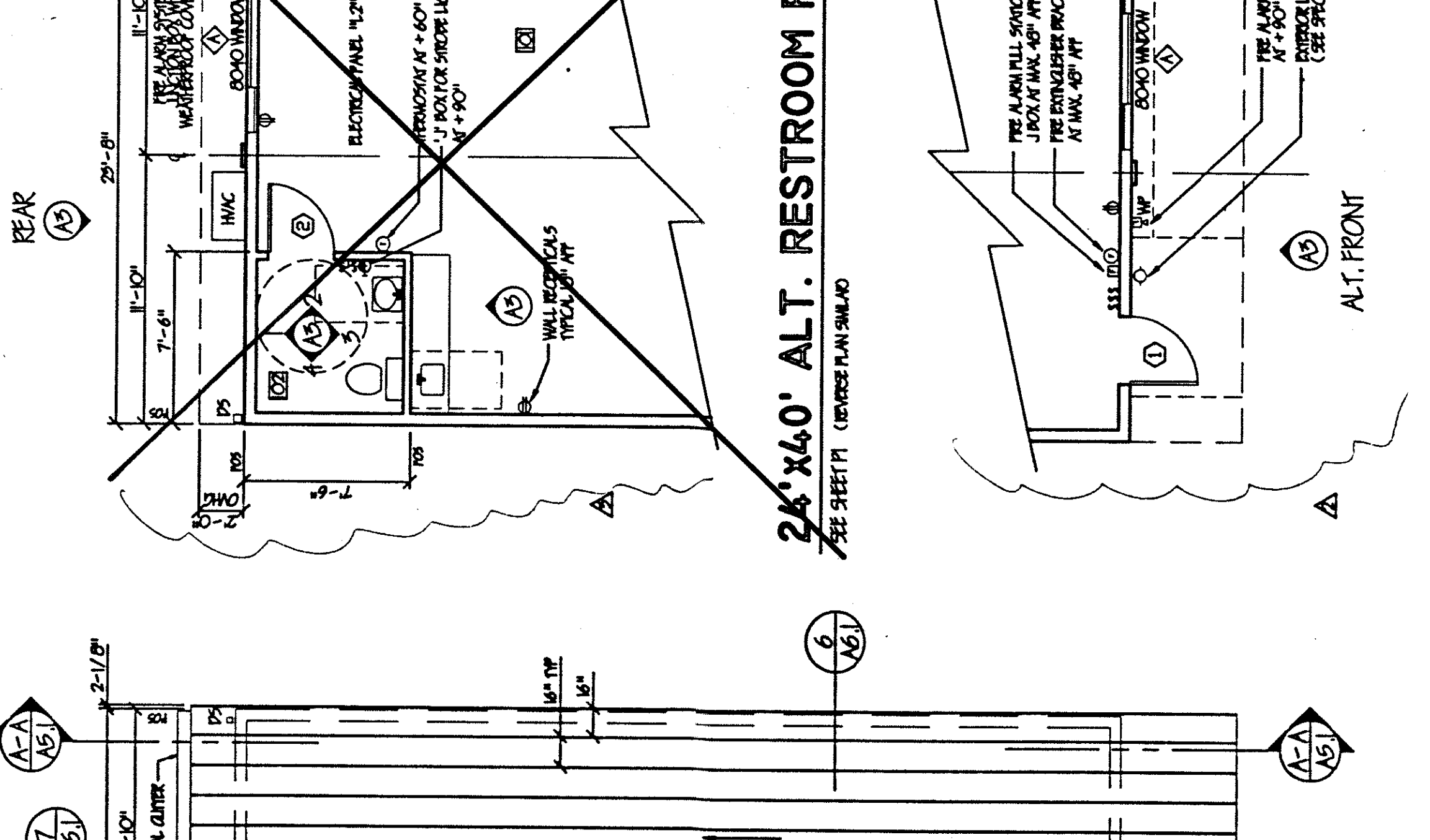
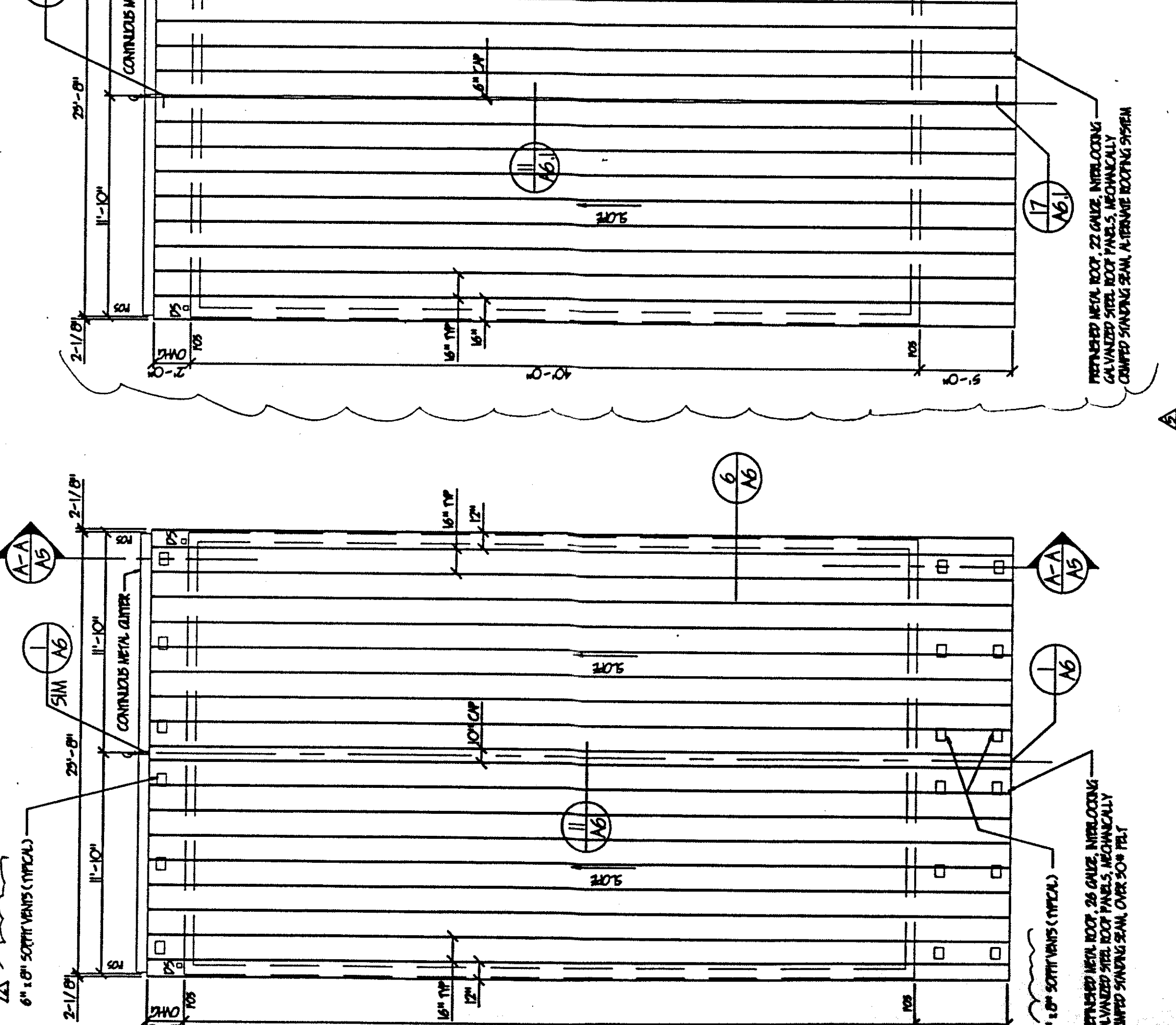
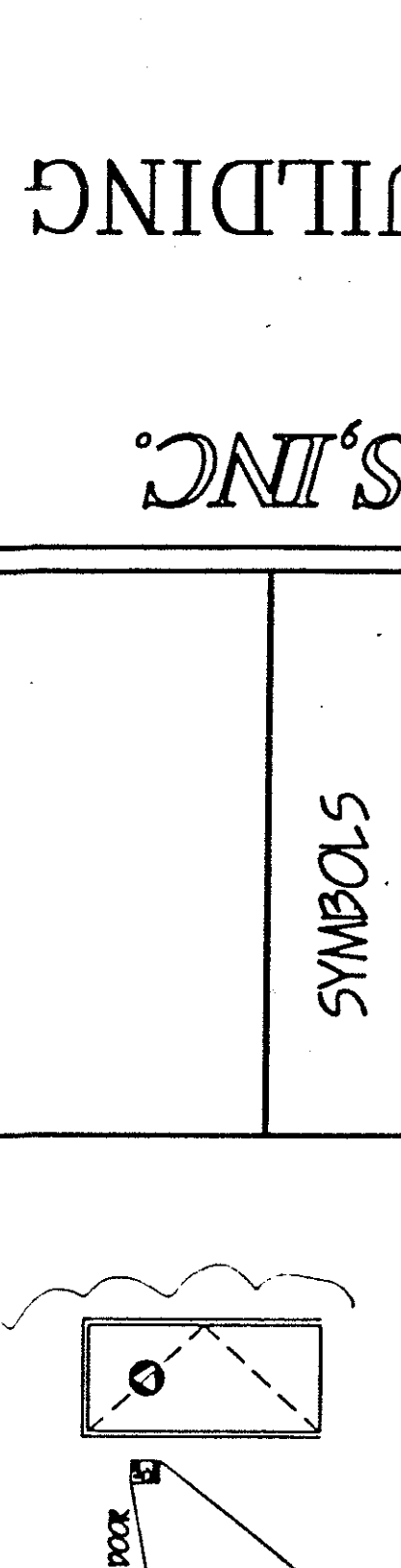
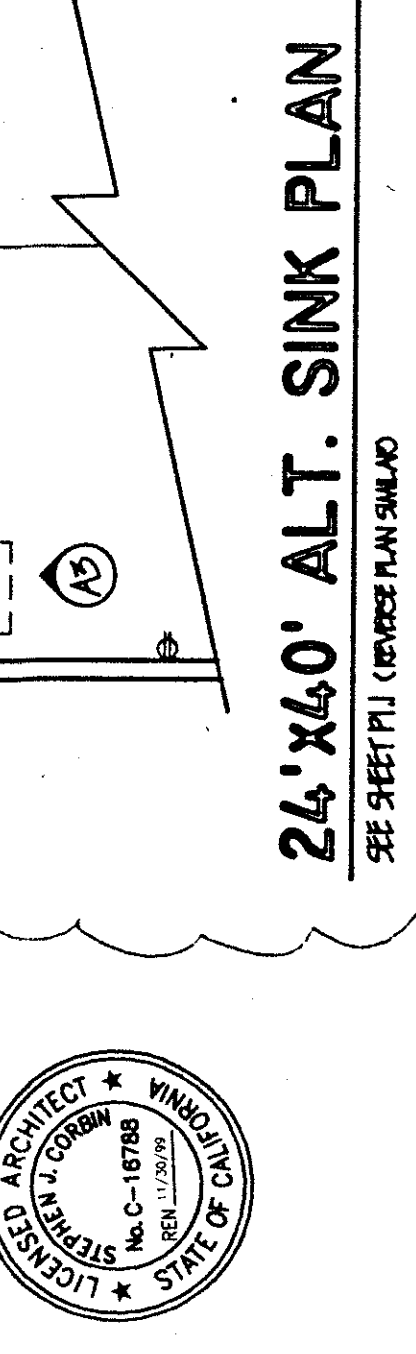
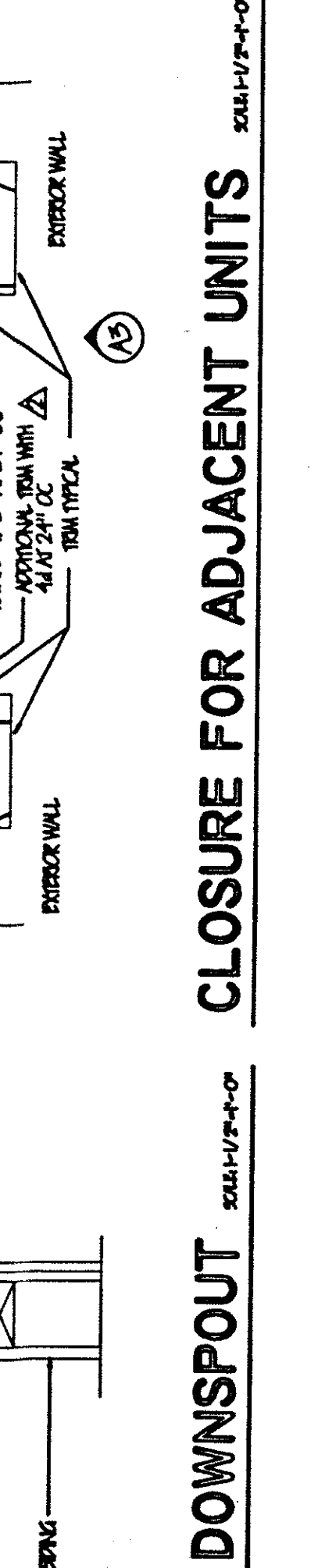
- DOOR TYPES**
- 2'-0" X 8'-0"
- 2'-0" X 4'-0"
- 2'-0" X 6'-0"

<p>VERIFY ALL MATERIALS, MECHANICAL AND ELECTRICAL TO BE INSTALLED TO SHOW TO BE INSTALLED TO THE PROJECT AND TO THE PROJECT CONTRACT NUMBER AND TO THE PROJECT CONTRACT NUMBER AND TO THE PROJECT CONTRACT NUMBER.</p>
<p>VERIFY ALL MATERIALS, MECHANICAL AND ELECTRICAL TO BE INSTALLED TO SHOW TO BE INSTALLED TO THE PROJECT AND TO THE PROJECT CONTRACT NUMBER AND TO THE PROJECT CONTRACT NUMBER.</p>

**NORMAN A. GEIGER**  
AIA, CSI, CDT, ICBO  
P.O. BOX 41064  
Sacramento, CA 95841  
(916) 332-2468 FAX  
(916) 332-2468 PHONE

**ARCHITECTURAL SERVICES  
DRAFTING**

**GEIGER**



REVISION	DATE	DESCRIPTION
REV. 01	APRIL 28, 1997	ISSUE
REV. 02	JULY 15, 1997	REVISED DOOR SCHEDULE
REV. 03	JUNE 20, 1997	REVISED WINDOW SCHEDULE
REV. 04	AUGUST 1, 1997	REVISED ROOF PLAN
REV. 05	AUGUST 26, 1997	REVISED DOOR SCHEDULE
REV. 06	SEPTEMBER 25, 1997	REVISED WINDOW SCHEDULE

**PC 330**

NOV 20 1997

**PACESETTER INDUSTRIES, INC.**  
P.O. BOX 1151, MOKESTO, CA 95353 (209) 521-1800

**24X40 RELOCATABLE BUILDING**

**24' X 40' BUILDING FLOOR PLAN**

SCALE: 1/4" = 1'-0"

**24' X 40' ALT. FRONT PLAN**

SCALE: 3/4" = 1'-0"

**24' X 40' ALT. ROOF PLAN**

SCALE: 1/4" = 1'-0"

**24' X 40' BUILDING ROOF PLAN**

SCALE: 1/4" = 1'-0"

**A2**

OR

**A2**

OR

**A2**

OR

**A2**

OR

**A2**

OR