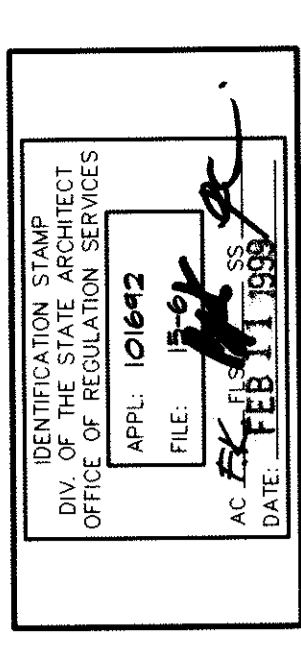
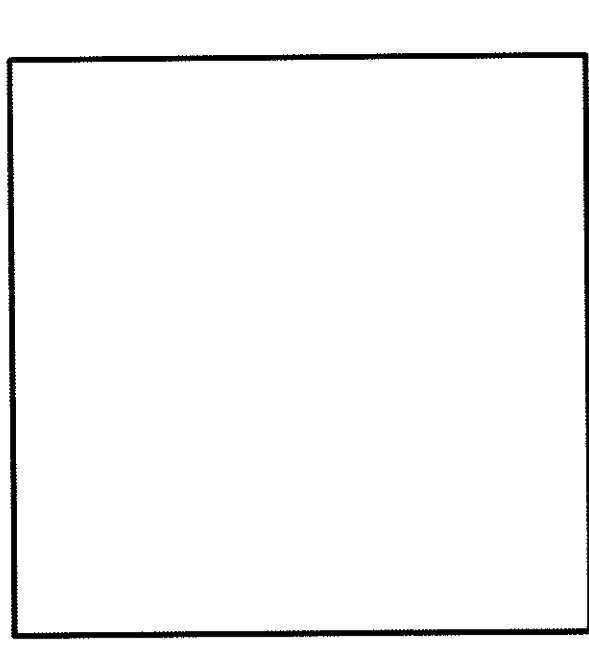


**SCA Architect, Inc.**  
1301 L Street  
Bakersfield, CA 93301  
(805) 327-1632



Robert J. Spradell, Registrar, AIA



RELOCATABLE CLASSROOMS  
AT  
HORACE MANN ELEMENTARY SCHOOL  
2710 NILES STREET  
BAKERSFIELD, CALIFORNIA  
FOR  
BAKERSFIELD CITY SCHOOL DISTRICT  
BAKERSFIELD, KERN COUNTY, CALIFORNIA

RESTROOM  
FLOOR PLANS  
AND INTERIOR  
ELEVATIONS

© Copyright 1998  
SCA Architect, Inc.  
All Rights Reserved

CHECK AND VERIFY ALL DIMENSIONS  
BEFORE PROCEEDING WITH THE WORK.  
REPORT DISCREPANCIES TO THE  
ARCHITECT. ALL CONSTRUCTION SHALL  
CONFORM TO THE CBC.

MARK	DATE	REVISIONS
△		
△		
△		
△		

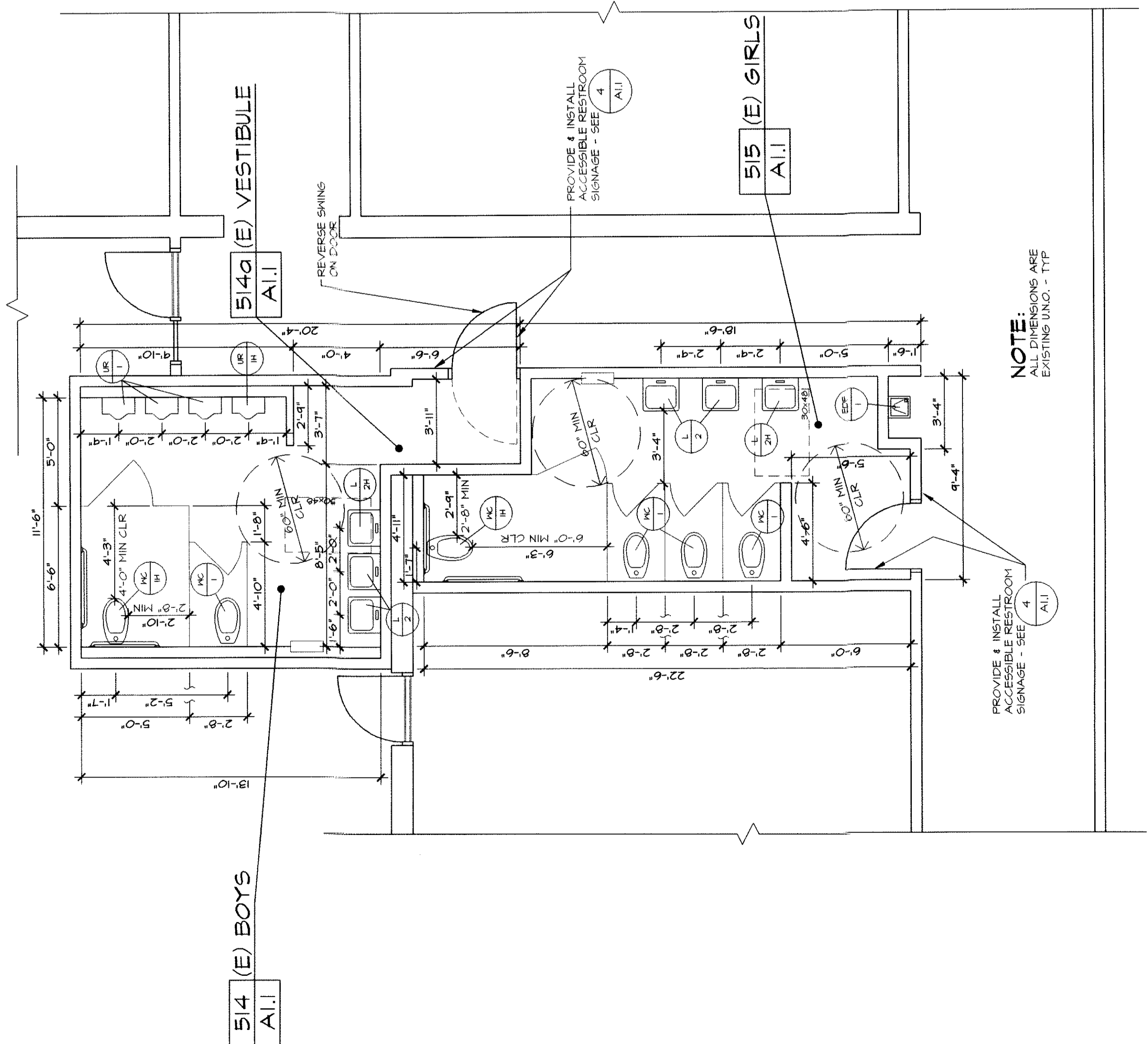
JOB NO.	961
DRAWN BY	DT
CHECKED	
DATE	01/15/98

1.2  
4 OF 30 SHEETS

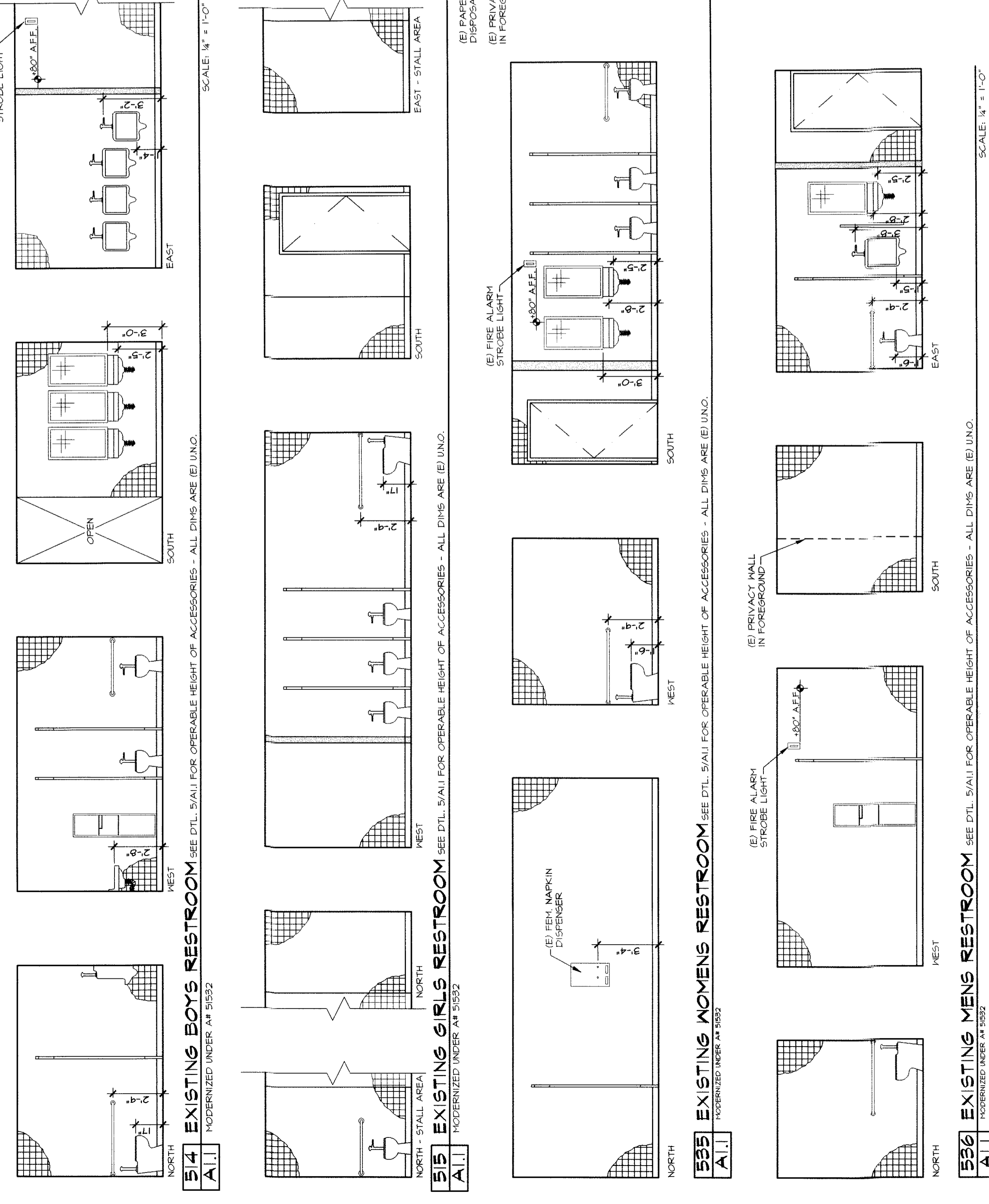
**NOTE:**  
TOILET FACILITIES HAVE BEEN REQUIRED  
FOR COMPLIANCE WITH CURRENT ACCESSIBILITY CODES  
AND HAVE BEEN DETERMINED TO BE IN COMPLIANCE WITH  
CURRENT CODES. ALL AREAS ARE ANTICIPATED TO BE  
IN COMPLIANCE WITH CURRENT CODES. ALL DIMENSIONS  
SHOWN ON THESE PLANS INDICATE  
EXISTING TOILET SIZES AND HAVE BEEN PROVIDED  
FOR COMPLIANCE WITH CURRENT CODES, LAWS, ETC. ONLY.

**EXISTING PLUMBING FIXTURE SCHEDULE**  
INDICATED UNDER A5552

- (1) NC KOLLER TOILETS IN REVERSE MOUNT POSITION FLOOR MOUNTED.
- (2) NC CLEANER KNOBS 2" HIGH OPEN FRONT LEFT SEAT.
- (3) NC AMERICAN STANDARD "TERRAZO" FLOOR MOUNTED.
- (4) NC GLOTTING REVERSE OPEN FRONT SEAT.
- (5) (R) AMERICAN STANDARD "ALLWOOD" WASHCOT HALL MOUNTED.
- (6) (R) AMERICAN STANDARD "ALLWOOD" WASHCOT HALL MOUNTED AT 11" MAX. TO TOP AND 44" MAX. TO 4" OF FLOOR VALVE.
- (7) (R) SAME AS ITEM LESS HANDICAP REQUIREMENTS.
- (8) (R) AMERICAN STANDARD "TERRAZO" WASHCOT 2000 BY SINGLE HOLE.
- (9) (R) AMERICAN STANDARD "TERRAZO" WASHCOT 2000 BY SINGLE HOLE MOUNTED AT 11" MAX. TO TOP AND 44" MAX. TO 4" OF FLOOR.
- (10) (R) AMERICAN STANDARD "TERRAZO" WASHCOT 2000 BY SINGLE HOLE MOUNTED AT 11" MAX. TO TOP AND 44" MAX. TO 4" OF FLOOR.
- (11) (R) MAINTENANCE AND WASTE PIPING TO BE INSTALLED TO FLOOR.
- (12) (R) ALL EXPOSED PIPING TO BE INSULATED.
- (13) (R) AMERICAN STANDARD "TERRAZO" WASHCOT 2000 BY SINGLE HOLE.
- (14) (R) AMERICAN STANDARD "TERRAZO" WASHCOT 2000 BY SINGLE HOLE.
- (15) (R) AMERICAN STANDARD "TERRAZO" WASHCOT 2000 BY SINGLE HOLE.
- (16) (R) ALL EXPOSED PIPING TO BE INSULATED.
- (17) (R) AMERICAN STANDARD "TERRAZO" WASHCOT 2000 BY SINGLE HOLE.
- (18) (R) ALL EXPOSED PIPING TO BE INSULATED.
- (19) (R) ELECTRIC DRINKING FOUNTAIN (DRINKING WATER) ALL EXPOSED PIPING TO BE INSULATED.
- (20) (R) HALL MOUNTED FOR HELLGARD ACCESS BY STAINLESS STEEL CABINET.



**(A) EXISTING STUDENT TOILETS**  
INDICATED UNDER A5551



**(B) EXISTING STAFF TOILETS**  
INDICATED UNDER A5551

