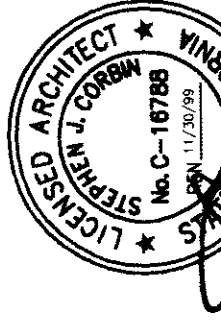


SCA Architect, Inc.
1301 L Street
Bakersfield, CA 93301
(805) 337-1632



Stephen M. Korman, RCHS-001-001

BUILDING CODE ANALYSIS

SECTION GROUPS	MINIMUM	MAXIMUM	MINIMUM	MAXIMUM	MINIMUM	MAXIMUM	MINIMUM	MAXIMUM	MINIMUM	MAXIMUM	MINIMUM	MAXIMUM
GROUPS	TOP OF	ALONGSIDE	AREA	INCREASE	AREA	DECREASE	AREA	DECREASE	AREA	DECREASE	AREA	DECREASE
NA	6"	E	VA	NA	NA	NA	NA	NA	NA	NA	NA	NA

*INCLUDES BLDG F AND BLDG R-4

PARKING LEGEND

RES STALLS	71
ADA COMP. STALLS	2
ADA COMP. VAN ACCESS	1
TOTAL PARKING	74

FIRE DEPARTMENT APPROVALS

FIRE DEPARTMENT ACCESS, EGRESS AND GATE ENTRANCES HAVE BEEN REVIEWED FOR COMPLIANCE WITH SECTION 505 AND 511, TITLE 19

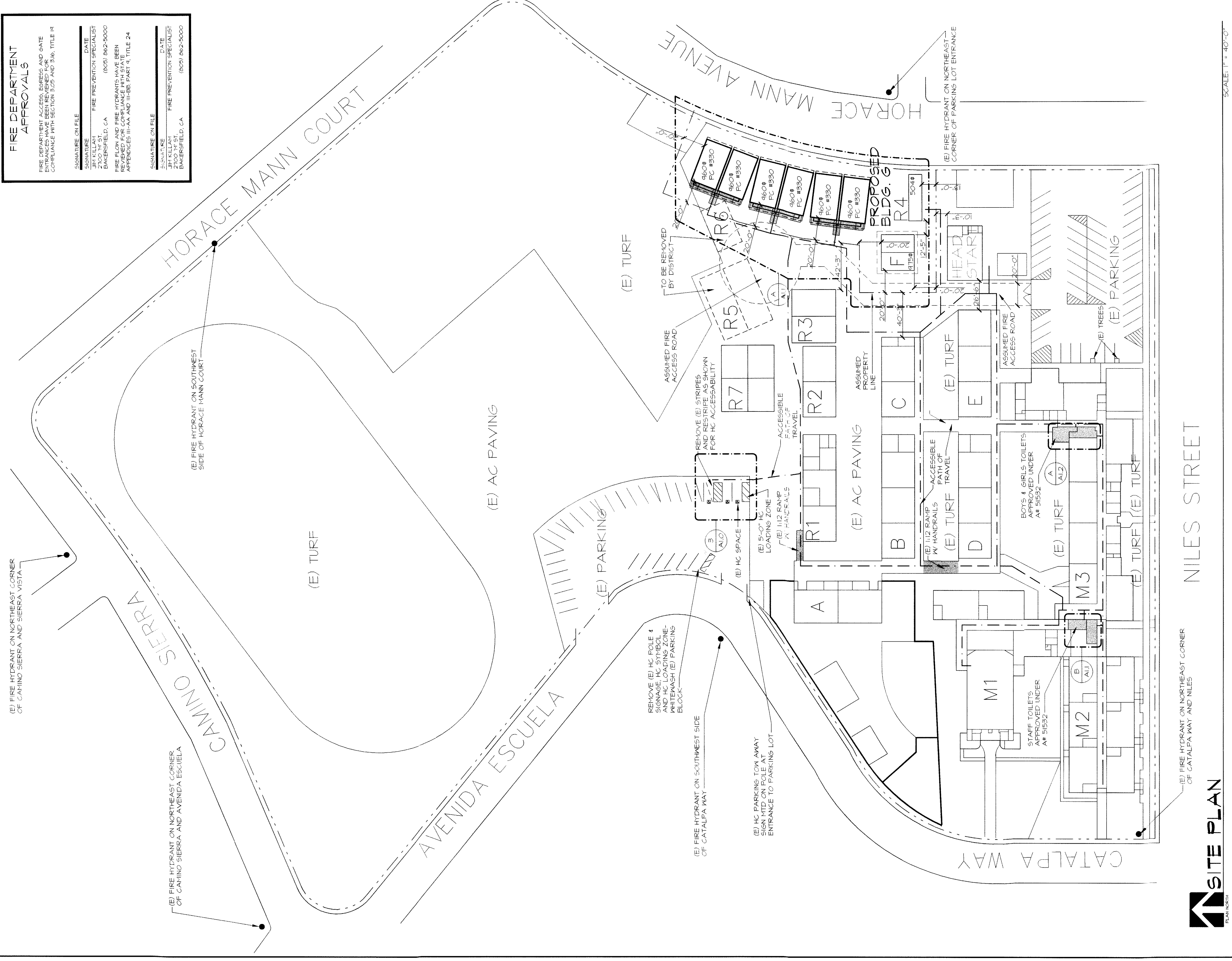
SIGNATURE ON FILE	DATE
_____	_____
_____	_____
_____	_____

FIRE PREVENTION SPECIALIST
BAKERSFIELD, CA (805) 862-5000

FIRE FLOW AND FIRE HYDRANTS HAVE BEEN APPROPRIATELY ILLUSTRATED AND ILLUSTRATED APPROPRIATELY III-AA AND III-BB PART 4, TITLE 24

SIGNATURE ON FILE	DATE
_____	_____
_____	_____

FIRE PREVENTION SPECIALIST
BAKERSFIELD, CA (805) 862-5000



(E) FIRE HYDRANT ON NORTHEAST CORNER OF CAMINO SIERRA AND SIERRA VISTA

(E) FIRE HYDRANT ON SOUTHWEST SIDE OF HORACE MANN COURT

(E) TURF

(E) AC PAVING

REMOVE (E) HC POLE & SIGNAGE HC SYMBOL ANTIWASH (E) PARKING BLOCK

(E) FIRE HYDRANT ON SOUTHWEST SIDE OF CATALPA WAY

(E) 1/2 RAMP W/ HANDRAILS APPROVED UNDER AM 51552

(E) 5'-0" W/ LOADING ZONE APPROVED UNDER AM 51552

(E) 1/2 RAMP W/ HANDRAILS APPROVED UNDER AM 51552

(E) TURF

(E) TURF

(E) TURF

(E) TURF

(E) TURF

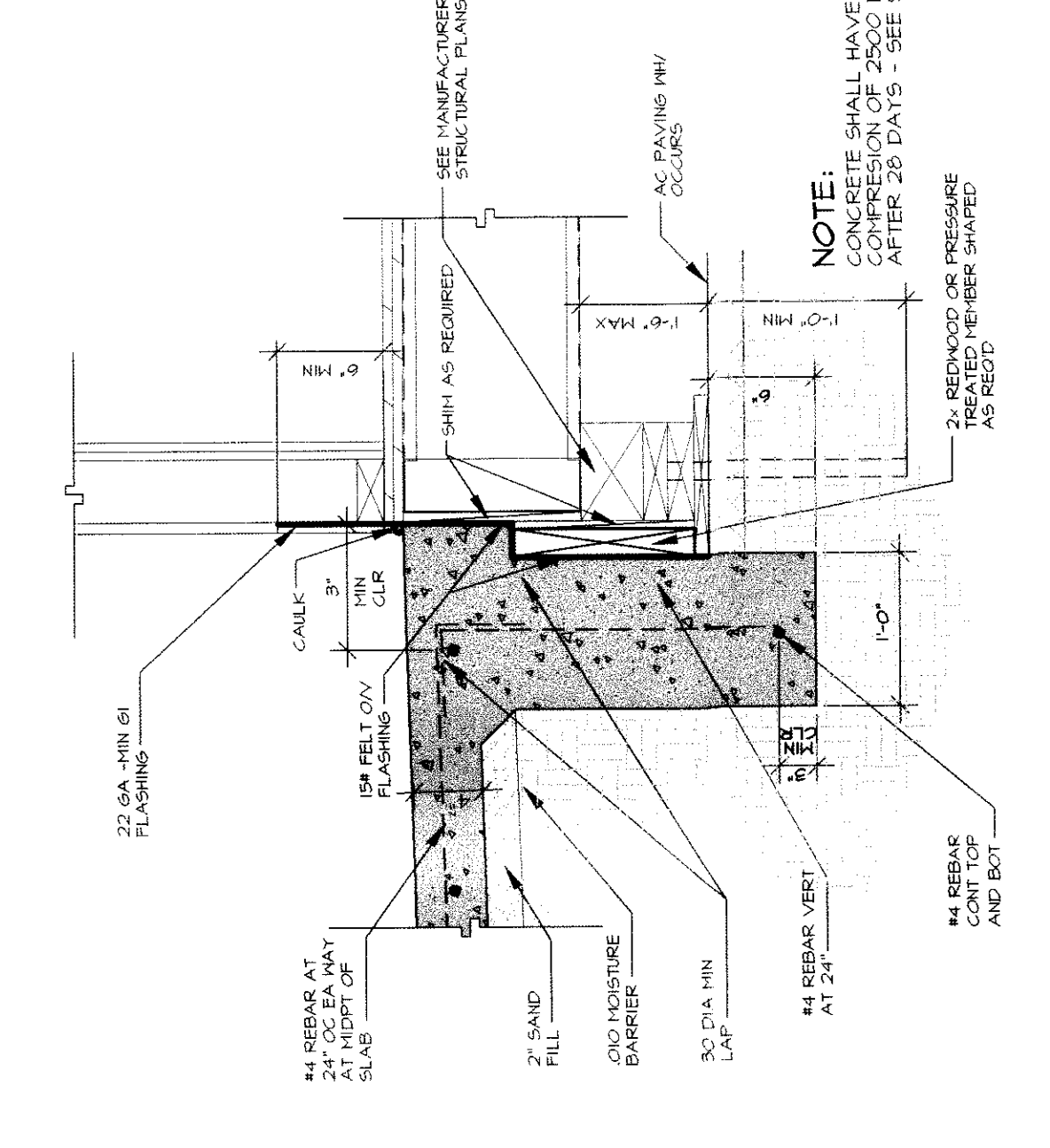
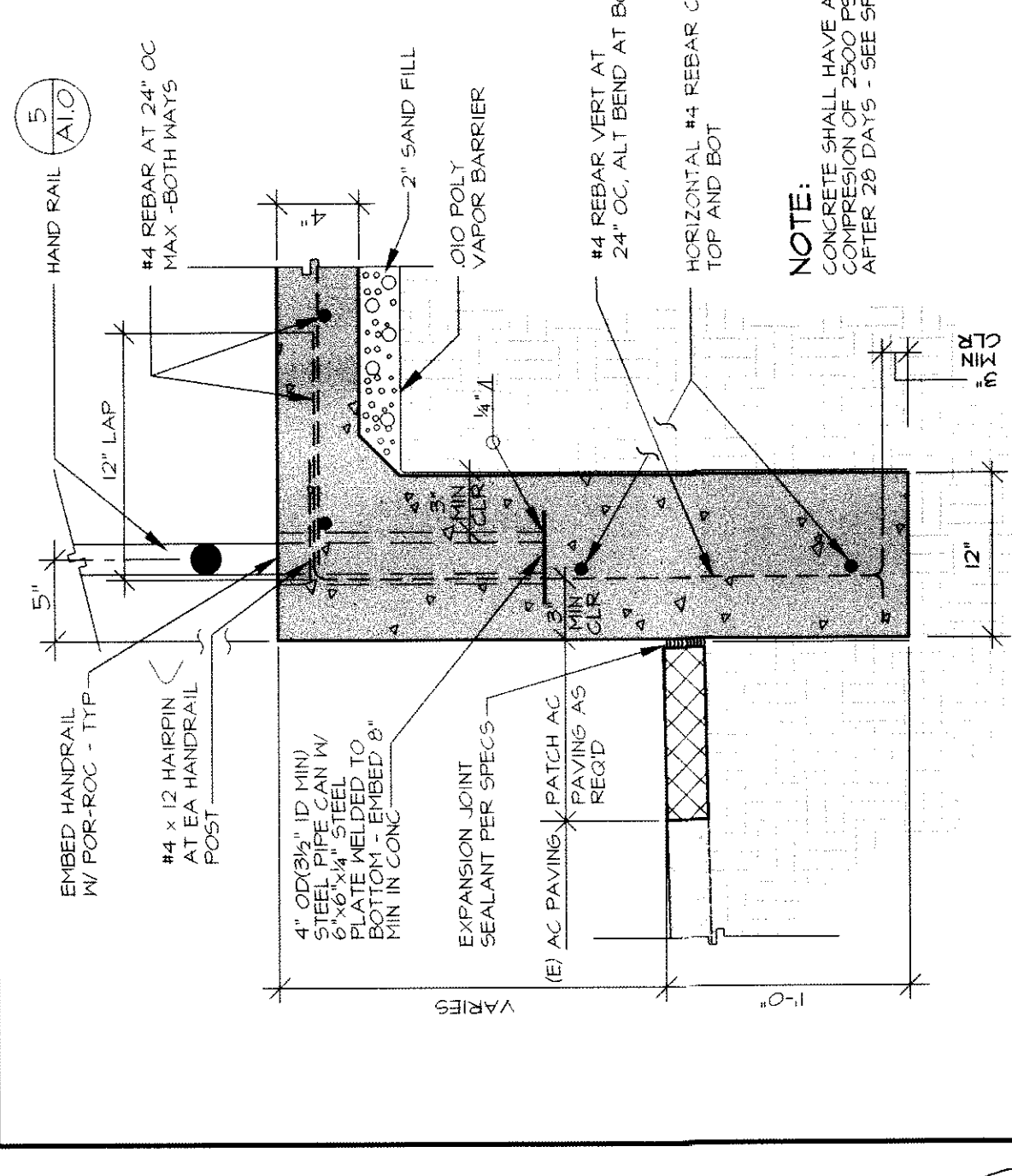
(E) FIRE HYDRANT ON NORTHEAST CORNER OF CATALPA WAY AND NILES

NILES STREET

SCALE: 1" = 40'-0"

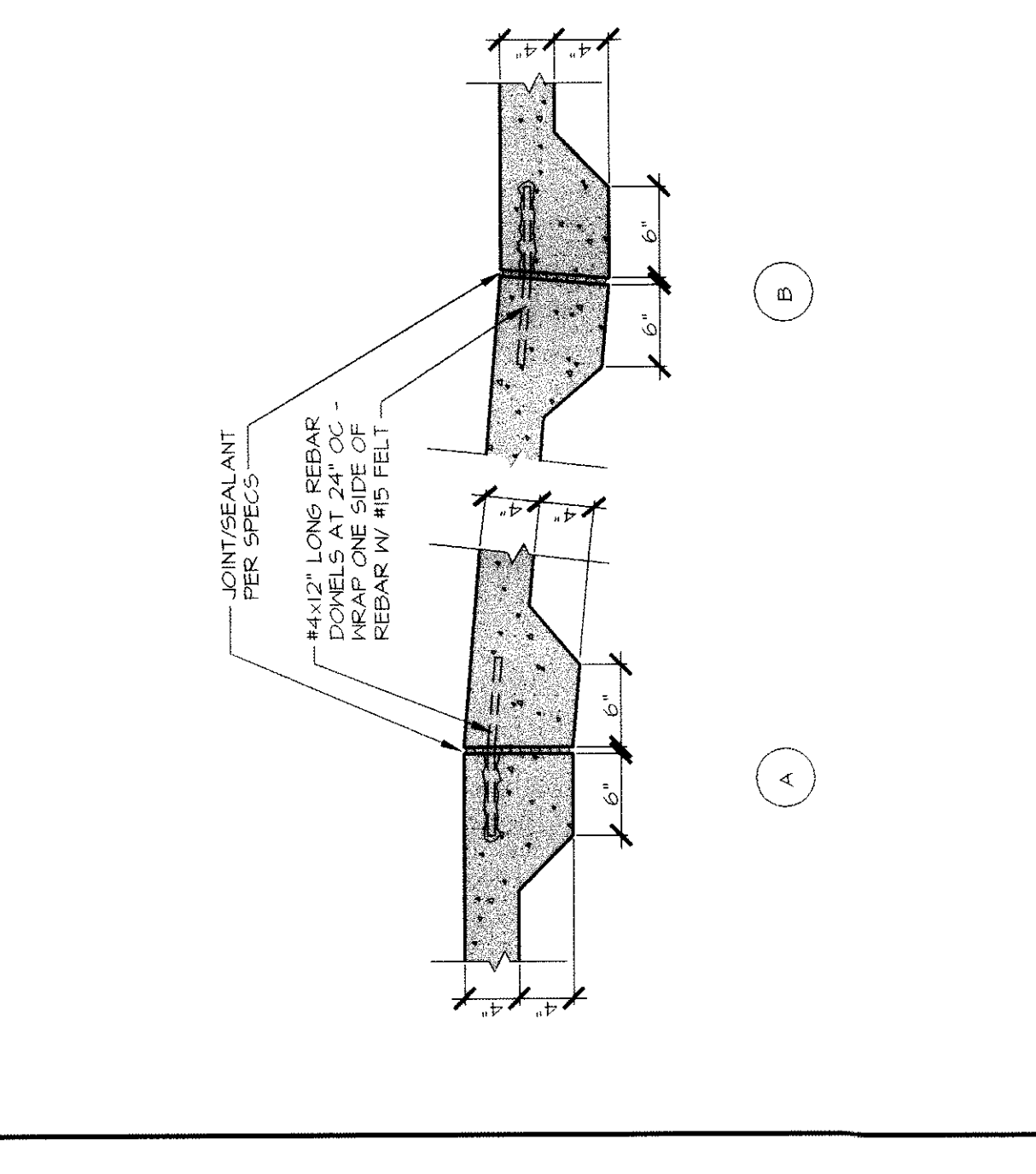
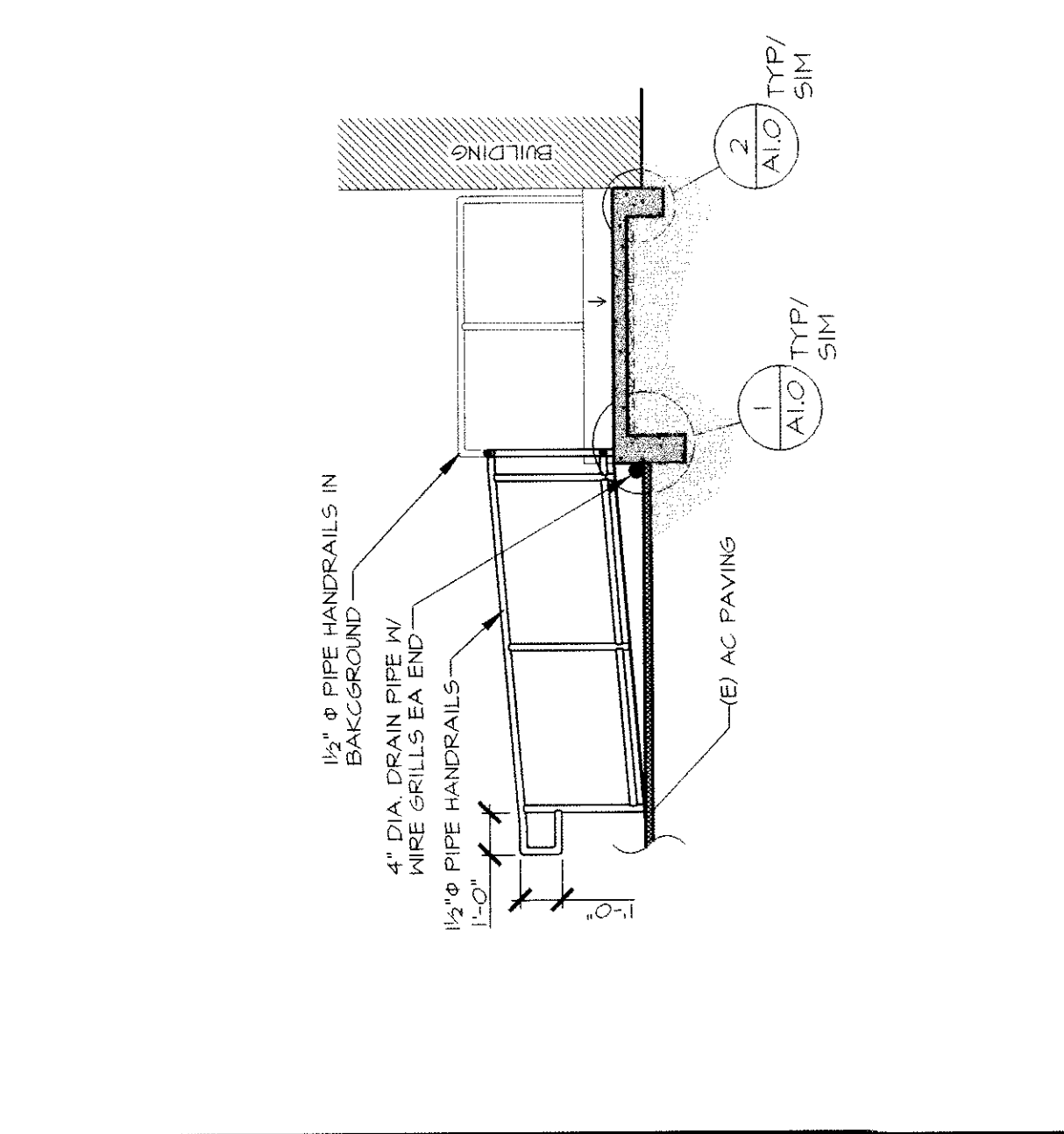
SITE PLAN

BLDG #	APPLICATION NUMBERS	BLDG USE
BLDG M-1	1000/1363/51532	MULTI-PURPOSE/CAFETERIA/TOILETS STORAGE/ADMINISTRATION
BLDG M-2	3234/1363/51532	4 CLSRHS/LIBRARY/STORAGE
BLDG M-3	1017/1363/51532	TOILETS/STORAGE/STORAGE
BLDG A	4130/6	2 KINDERGARTEN/TOILETS/STORAGE
BLDG B	1363/51532	3 CLSRHS/TOILETS
BLDG C	1363/51532	2 CLSRHS/STORAGE
BLDG D	1363/51532	3 CLSRHS/STORAGE
BLDG E	1363/51532	3 CLSRHS
BLDG F	4130/6	TOILETS
BLDG R-1	17166/43867	ADMINISTRATION/TOILETS/MISC
BLDG R-2	51532	TOILETS
BLDG R-3	51532	2 KINDERGARTEN
BLDG R-4	51532	2 KINDERGARTEN
BLDG R-5	51532	2 KINDERGARTEN
BLDG R-6	51532	2 KINDERGARTEN
BLDG R-7	51532	2 KINDERGARTEN
BLDG R-8	51532	2 KINDERGARTEN
BLDG R-9	51532	2 KINDERGARTEN
BLDG R-10	51532	2 KINDERGARTEN
BLDG R-11	51532	2 KINDERGARTEN
BLDG R-12	51532	2 KINDERGARTEN
BLDG R-13	51532	2 KINDERGARTEN
BLDG R-14	51532	2 KINDERGARTEN
BLDG R-15	51532	2 KINDERGARTEN
BLDG R-16	51532	2 KINDERGARTEN
BLDG R-17	51532	2 KINDERGARTEN
BLDG R-18	51532	2 KINDERGARTEN
BLDG R-19	51532	2 KINDERGARTEN
BLDG R-20	51532	2 KINDERGARTEN
BLDG R-21	51532	2 KINDERGARTEN
BLDG R-22	51532	2 KINDERGARTEN
BLDG R-23	51532	2 KINDERGARTEN
BLDG R-24	51532	2 KINDERGARTEN
BLDG R-25	51532	2 KINDERGARTEN
BLDG R-26	51532	2 KINDERGARTEN
BLDG R-27	51532	2 KINDERGARTEN
BLDG R-28	51532	2 KINDERGARTEN
BLDG R-29	51532	2 KINDERGARTEN
BLDG R-30	51532	2 KINDERGARTEN
BLDG R-31	51532	2 KINDERGARTEN
BLDG R-32	51532	2 KINDERGARTEN
BLDG R-33	51532	2 KINDERGARTEN
BLDG R-34	51532	2 KINDERGARTEN
BLDG R-35	51532	2 KINDERGARTEN
BLDG R-36	51532	2 KINDERGARTEN
BLDG R-37	51532	2 KINDERGARTEN
BLDG R-38	51532	2 KINDERGARTEN
BLDG R-39	51532	2 KINDERGARTEN
BLDG R-40	51532	2 KINDERGARTEN
BLDG R-41	51532	2 KINDERGARTEN
BLDG R-42	51532	2 KINDERGARTEN
BLDG R-43	51532	2 KINDERGARTEN
BLDG R-44	51532	2 KINDERGARTEN
BLDG R-45	51532	2 KINDERGARTEN
BLDG R-46	51532	2 KINDERGARTEN
BLDG R-47	51532	2 KINDERGARTEN
BLDG R-48	51532	2 KINDERGARTEN
BLDG R-49	51532	2 KINDERGARTEN
BLDG R-50	51532	2 KINDERGARTEN
BLDG R-51	51532	2 KINDERGARTEN
BLDG R-52	51532	2 KINDERGARTEN
BLDG R-53	51532	2 KINDERGARTEN
BLDG R-54	51532	2 KINDERGARTEN
BLDG R-55	51532	2 KINDERGARTEN
BLDG R-56	51532	2 KINDERGARTEN
BLDG R-57	51532	2 KINDERGARTEN
BLDG R-58	51532	2 KINDERGARTEN
BLDG R-59	51532	2 KINDERGARTEN
BLDG R-60	51532	2 KINDERGARTEN
BLDG R-61	51532	2 KINDERGARTEN
BLDG R-62	51532	2 KINDERGARTEN
BLDG R-63	51532	2 KINDERGARTEN
BLDG R-64	51532	2 KINDERGARTEN
BLDG R-65	51532	2 KINDERGARTEN
BLDG R-66	51532	2 KINDERGARTEN
BLDG R-67	51532	2 KINDERGARTEN
BLDG R-68	51532	2 KINDERGARTEN
BLDG R-69	51532	2 KINDERGARTEN
BLDG R-70	51532	2 KINDERGARTEN
BLDG R-71	51532	2 KINDERGARTEN
BLDG R-72	51532	2 KINDERGARTEN
BLDG R-73	51532	2 KINDERGARTEN
BLDG R-74	51532	2 KINDERGARTEN
BLDG R-75	51532	2 KINDERGARTEN
BLDG R-76	51532	2 KINDERGARTEN
BLDG R-77	51532	2 KINDERGARTEN
BLDG R-78	51532	2 KINDERGARTEN
BLDG R-79	51532	2 KINDERGARTEN
BLDG R-80	51532	2 KINDERGARTEN
BLDG R-81	51532	2 KINDERGARTEN
BLDG R-82	51532	2 KINDERGARTEN
BLDG R-83	51532	2 KINDERGARTEN
BLDG R-84	51532	2 KINDERGARTEN
BLDG R-85	51532	2 KINDERGARTEN
BLDG R-86	51532	2 KINDERGARTEN
BLDG R-87	51532	2 KINDERGARTEN
BLDG R-88	51532	2 KINDERGARTEN
BLDG R-89	51532	2 KINDERGARTEN
BLDG R-90	51532	2 KINDERGARTEN
BLDG R-91	51532	2 KINDERGARTEN
BLDG R-92	51532	2 KINDERGARTEN
BLDG R-93	51532	2 KINDERGARTEN
BLDG R-94	51532	2 KINDERGARTEN
BLDG R-95	51532	2 KINDERGARTEN
BLDG R-96	51532	2 KINDERGARTEN
BLDG R-97	51532	2 KINDERGARTEN
BLDG R-98	51532	2 KINDERGARTEN
BLDG R-99	51532	2 KINDERGARTEN
BLDG R-100	51532	2 KINDERGARTEN



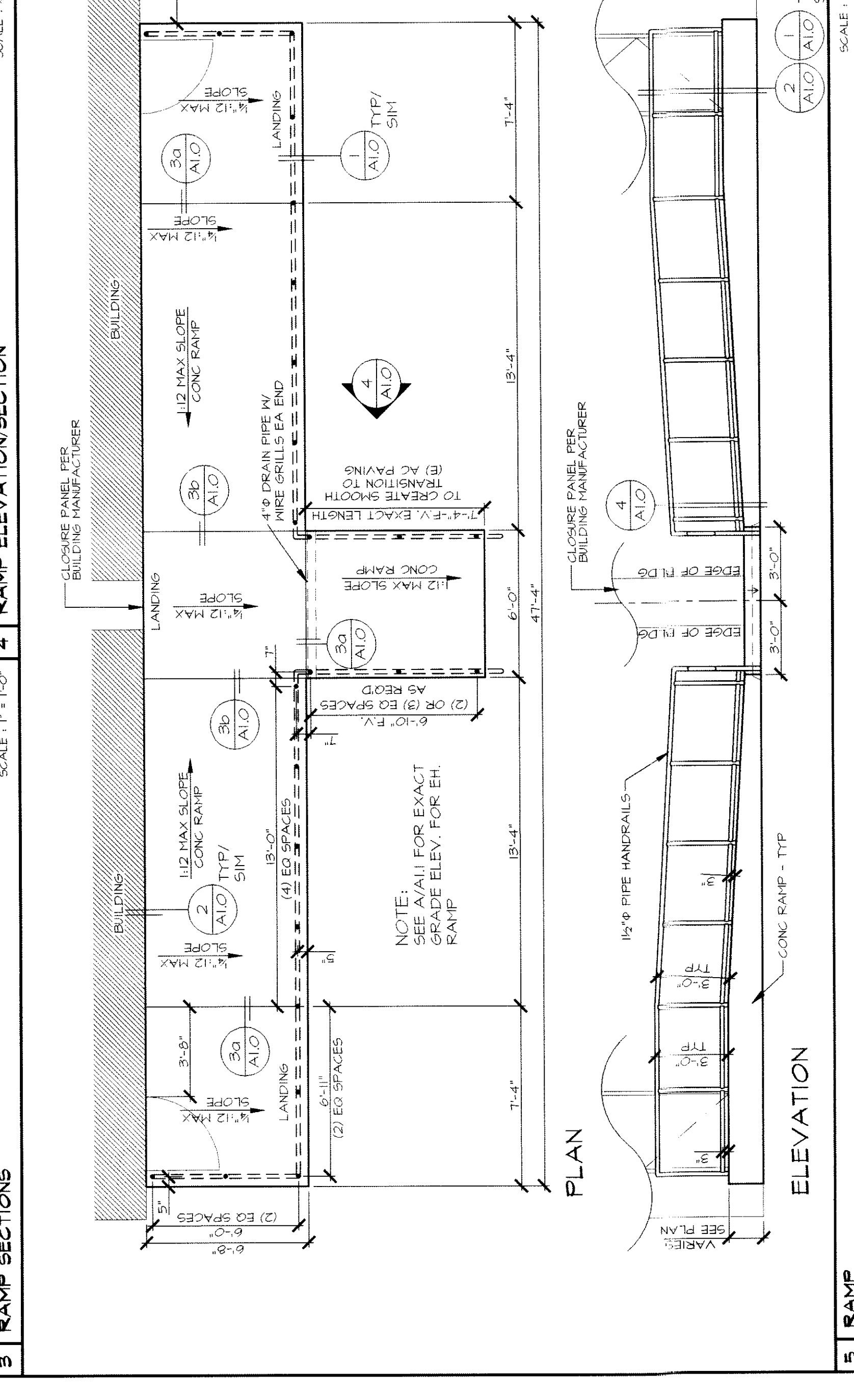
1 RAMP FOOTING SCALE: 1" = 1'-0"

2 RAMP FOOTING SCALE: 1" = 1'-0"



3 RAMP SECTIONS SCALE: 1" = 1'-0"

4 RAMP SECTIONS SCALE: 1" = 1'-0"



5 RAMP SCALE: 1" = 1'-0"

6 RAMP SCALE: 1" = 1'-0"

RELOCATABLE CLASSROOMS
AT
HORACE MANN ELEMENTARY SCHOOL
2710 NILES STREET
BAKERSFIELD, CALIFORNIA
FOR
BAKERSFIELD CITY SCHOOL DISTRICT
BAKERSFIELD, KERN COUNTY, CALIFORNIA

SITE PLAN/DETAILS AND ANALYSIS

CHECK AND VERIFY ALL DIMENSIONS BEFORE PROCEEDING WITH THE WORK. ARCHITECT SHALL BE RESPONSIBLE FOR ALL CONSTRUCTION SHALL CONFORM TO THE C.B.C.

MARK	DATE	REVISIONS
▲		
▲		
▲		
▲		

JOB NO. 961
DRAWN BY DT
CHECKED BY
DATE
1.0
2 OF 36 SHEETS

