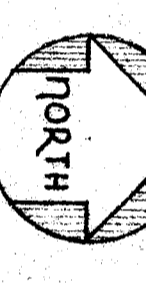


FLOOR PLAN of REHABILITATED BUILDING Scale: 1/8" = 1'-0"



REV: EXISTING 348 T.C. ROAD, VENTURA  
5" EXISTING STEEL ANGLE LINTELS ABOVE

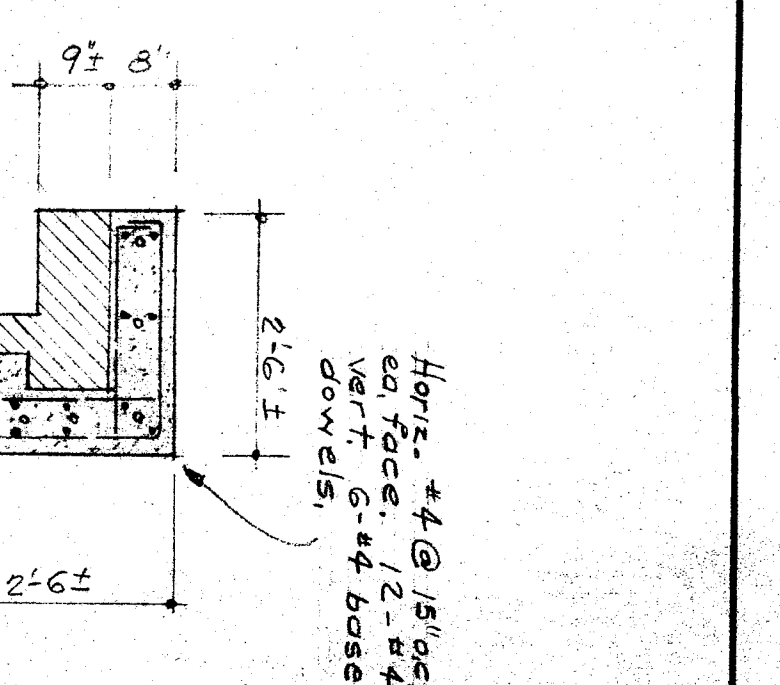
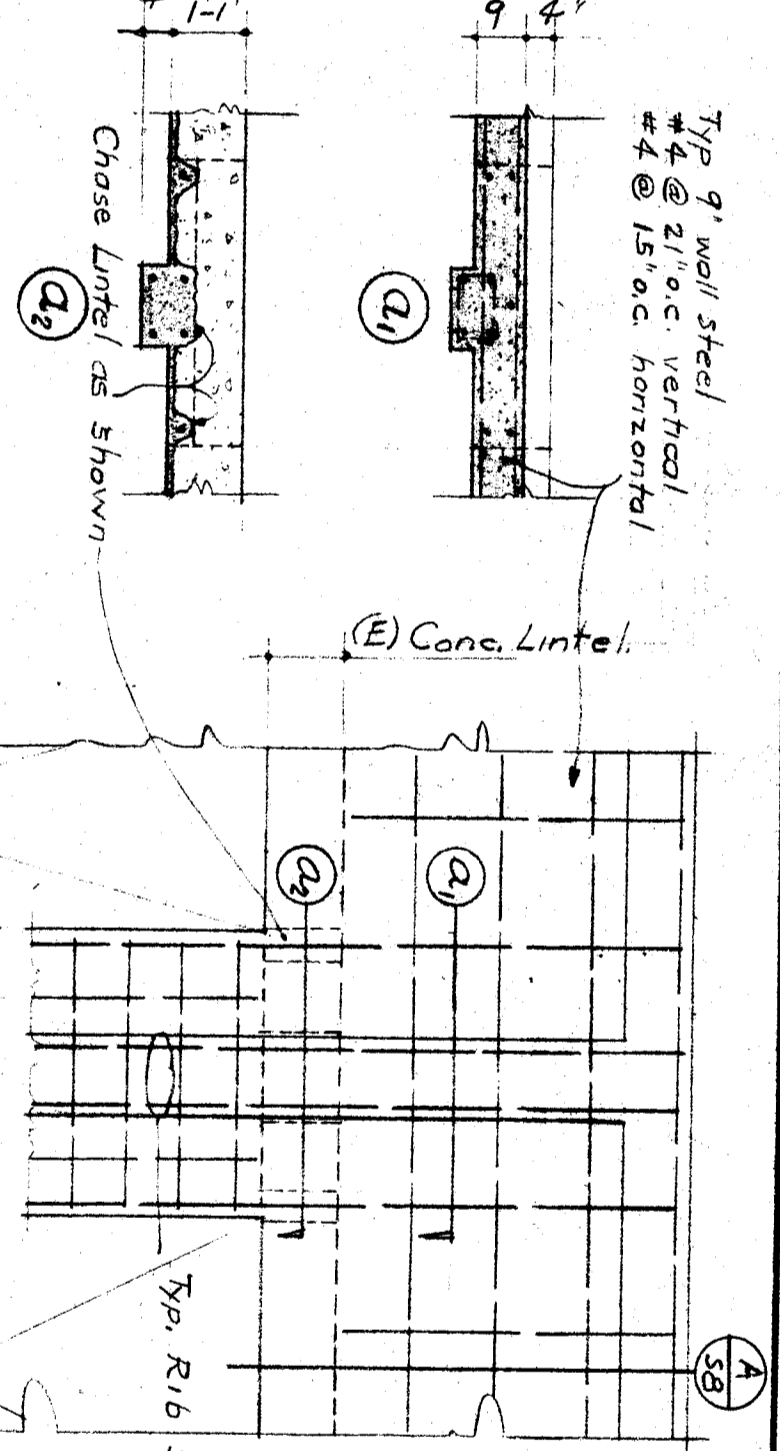
CHECK AND VERIFY ALL DIMENSIONS BEFORE PROCEEDING WITH THE WORK. REPORT ANY DISCREPANCIES TO ARCHITECT.

<p>HILLMAN &amp; NOWELL STRUCTURAL ENGINEERS 3150 AVENUE 166, LOS ANGELES, CALIF.</p>	<p>COUNTY OF KERN OFFICE OF SUPERINTENDENT OF SCHOOLS JESSE B. STOCKTON SUPERINTENDENT</p>
<p>APPROVED: [Signature] DATE: [Blank]</p>	<p>STATE OF CALIFORNIA DEPARTMENT OF PUBLIC WORKS DIVISION OF ARCHITECTURE APPROVED: [Signature] DATE: [Blank]</p>

BAKERSFIELD CITY SCHOOLS  
1600 K. ST. BAKERSFIELD, CALIF.  
BOARD OF EDUCATION

REHAB OF HORACE MANN ELEM. SCHOOL  
BAKERSFIELD CITY SCHOOL DISTRICT  
BAKERSFIELD CALIFORNIA

ERNEST L. MCROY - ARCHITECT  
162 - 19th ST.  
BAKERSFIELD CALIFORNIA



GENERAL NOTE:  
Vertical dimensions are not controlled by  
but to give equal spans on the 4' center  
members. See (A).