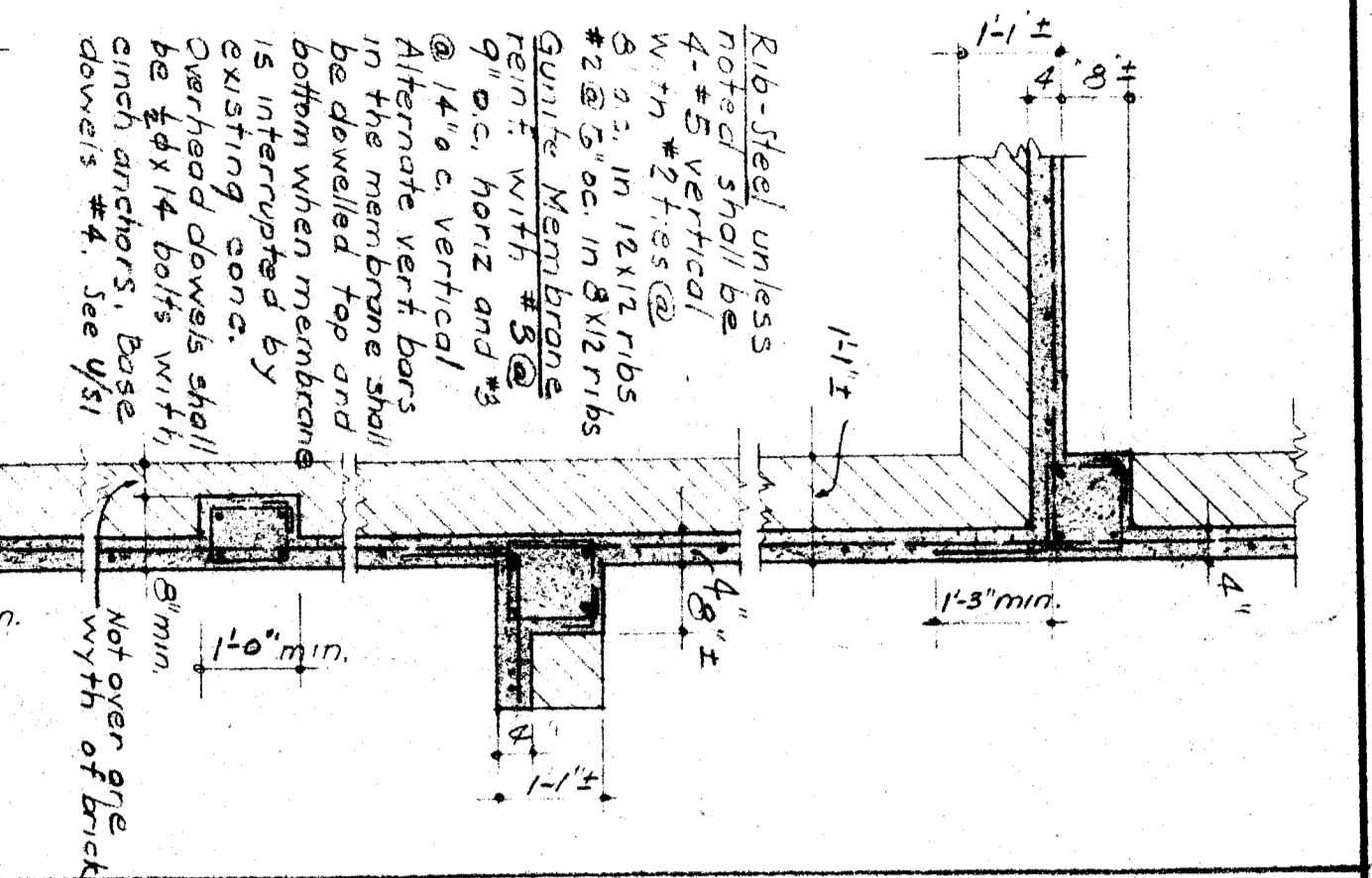
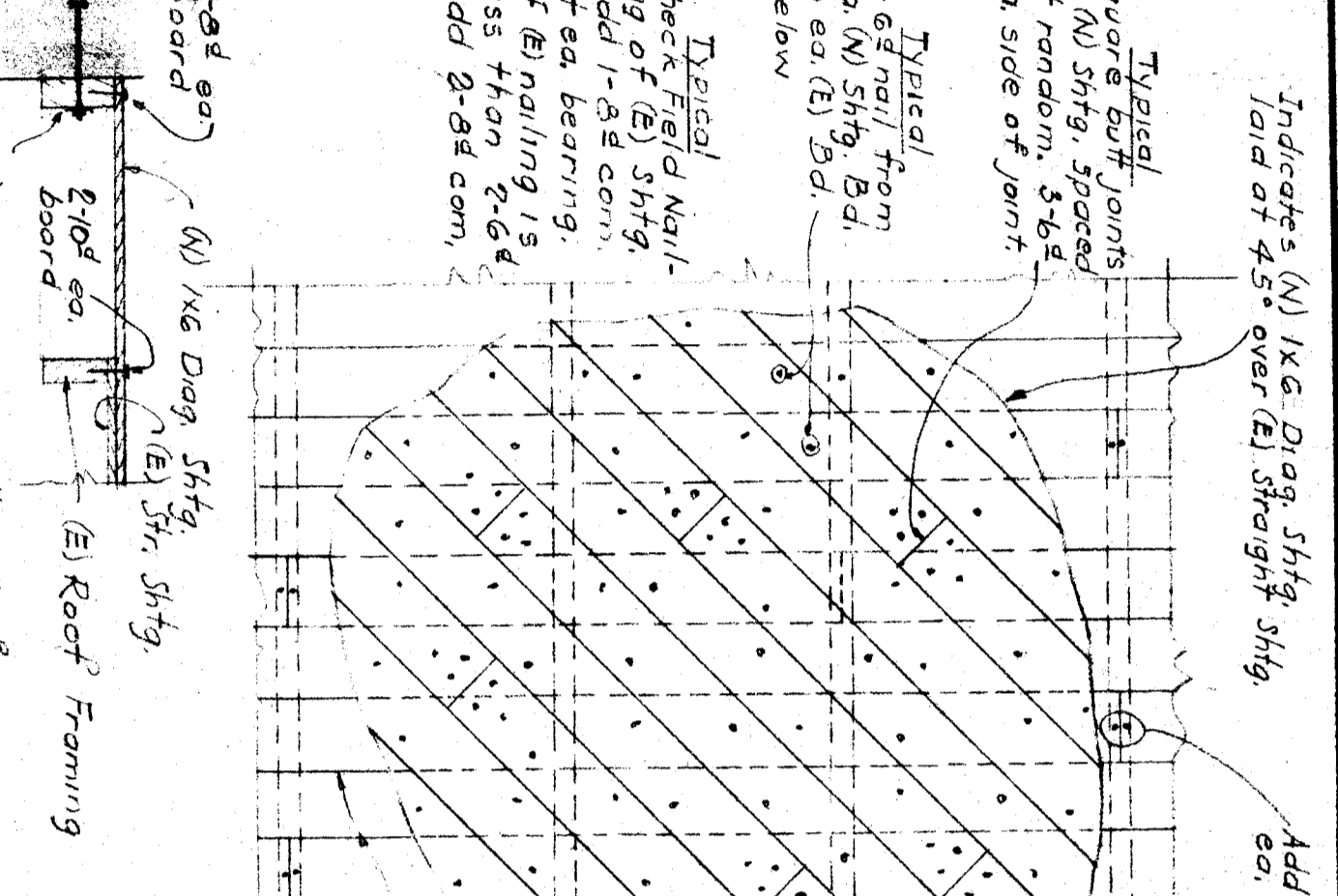


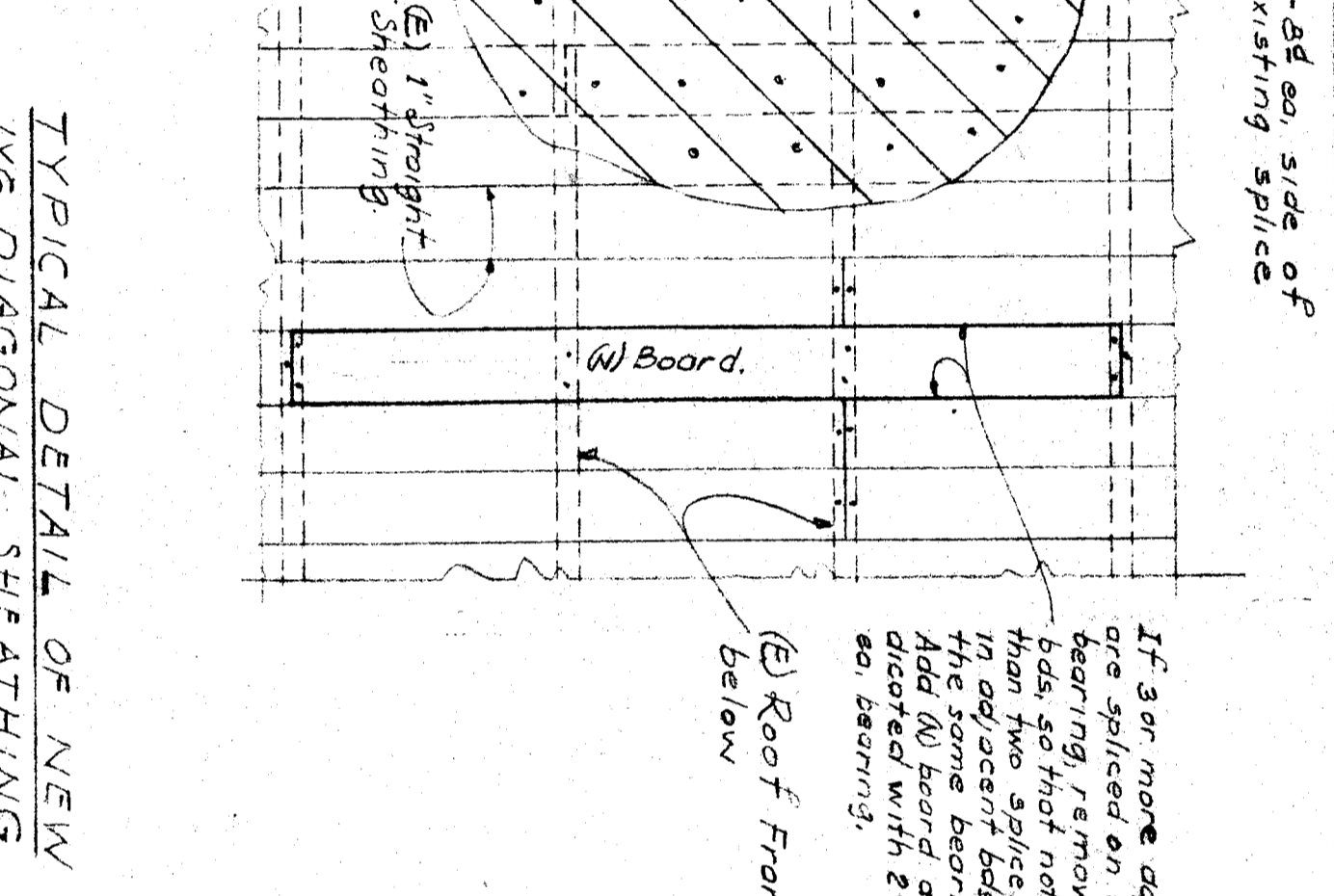
TYPICAL HOOKS & BENDS (P)



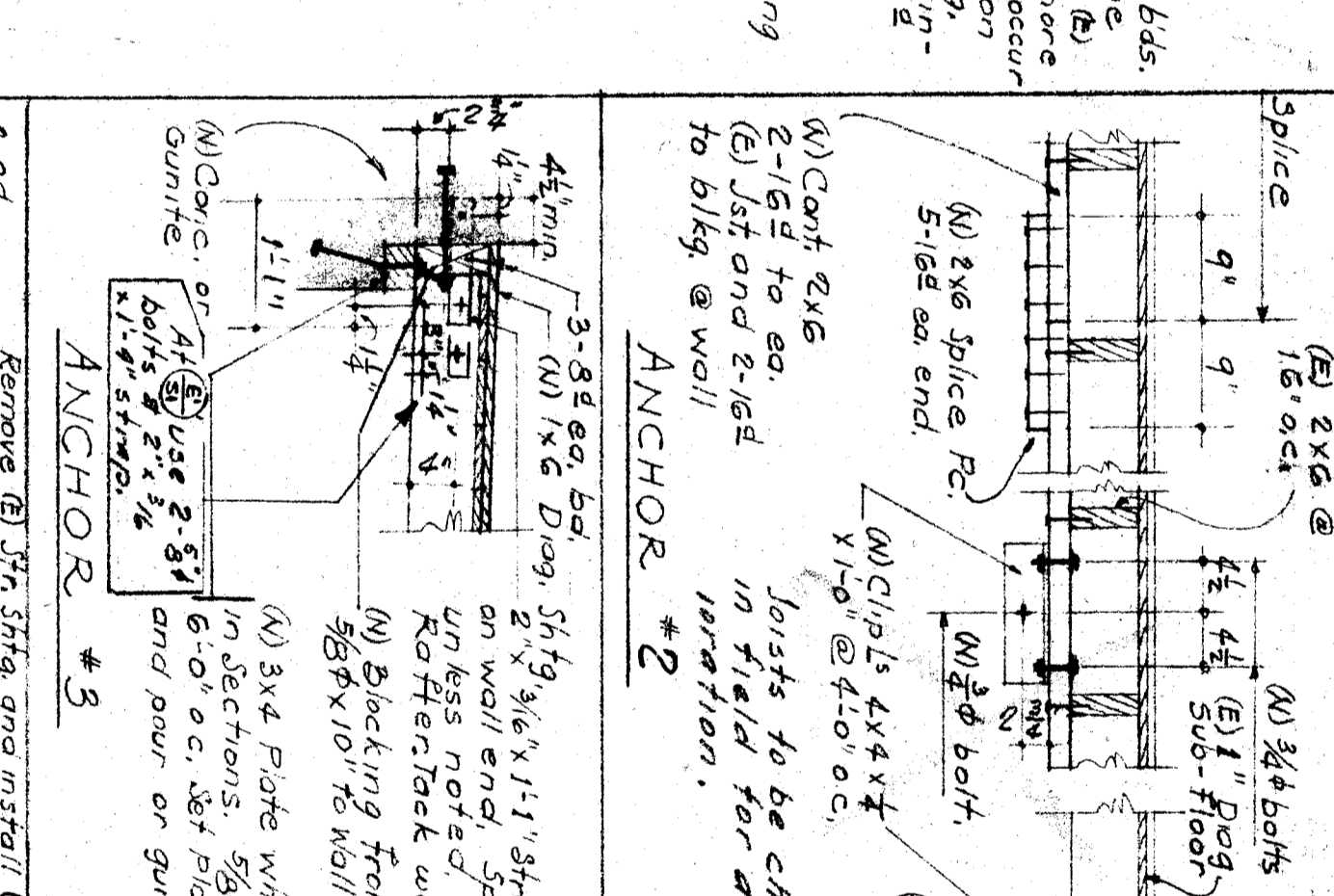
TYPICAL FLUSH RIBS IN CONT WALL (S)



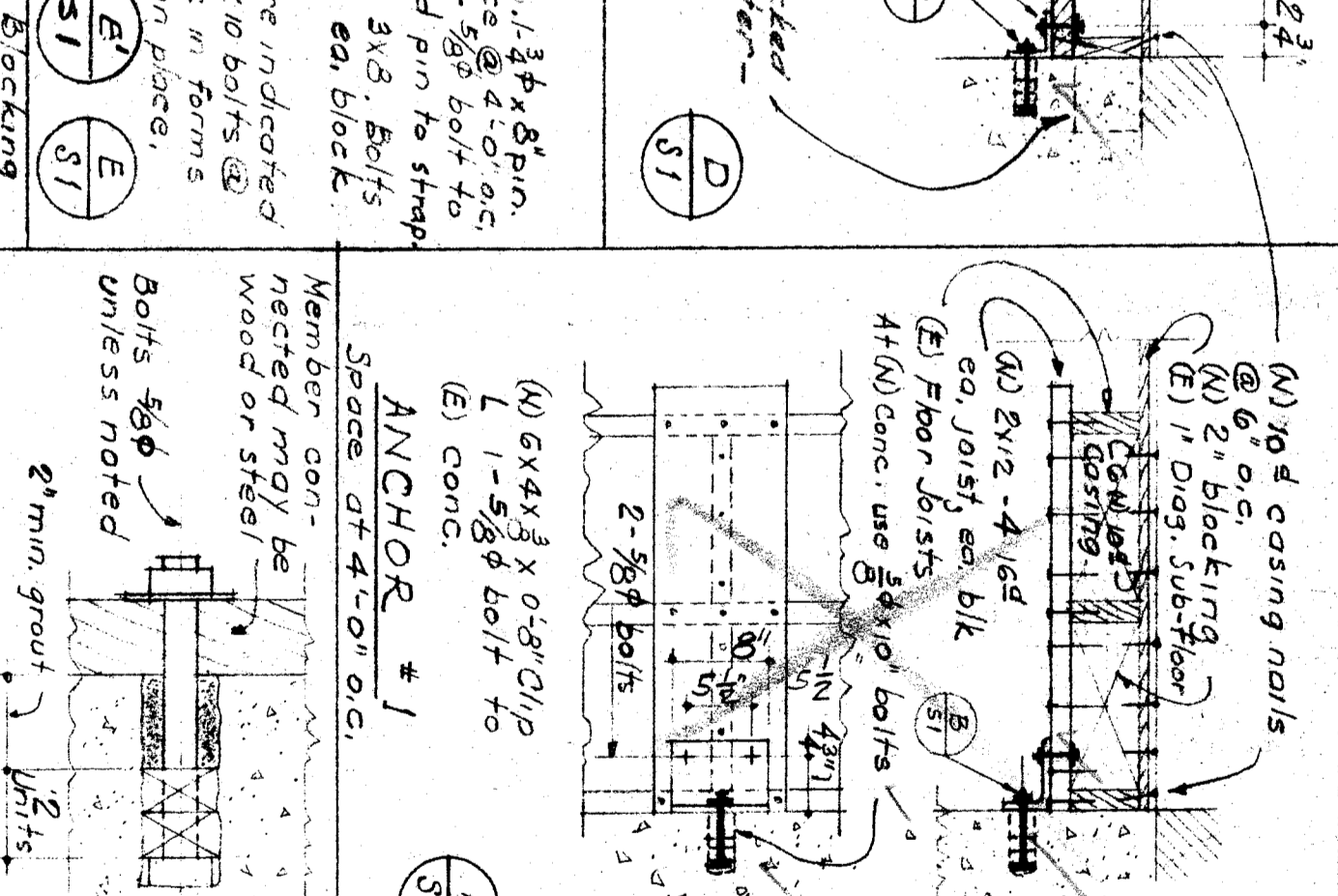
TYPICAL CHASED THRU LINETELS (M)



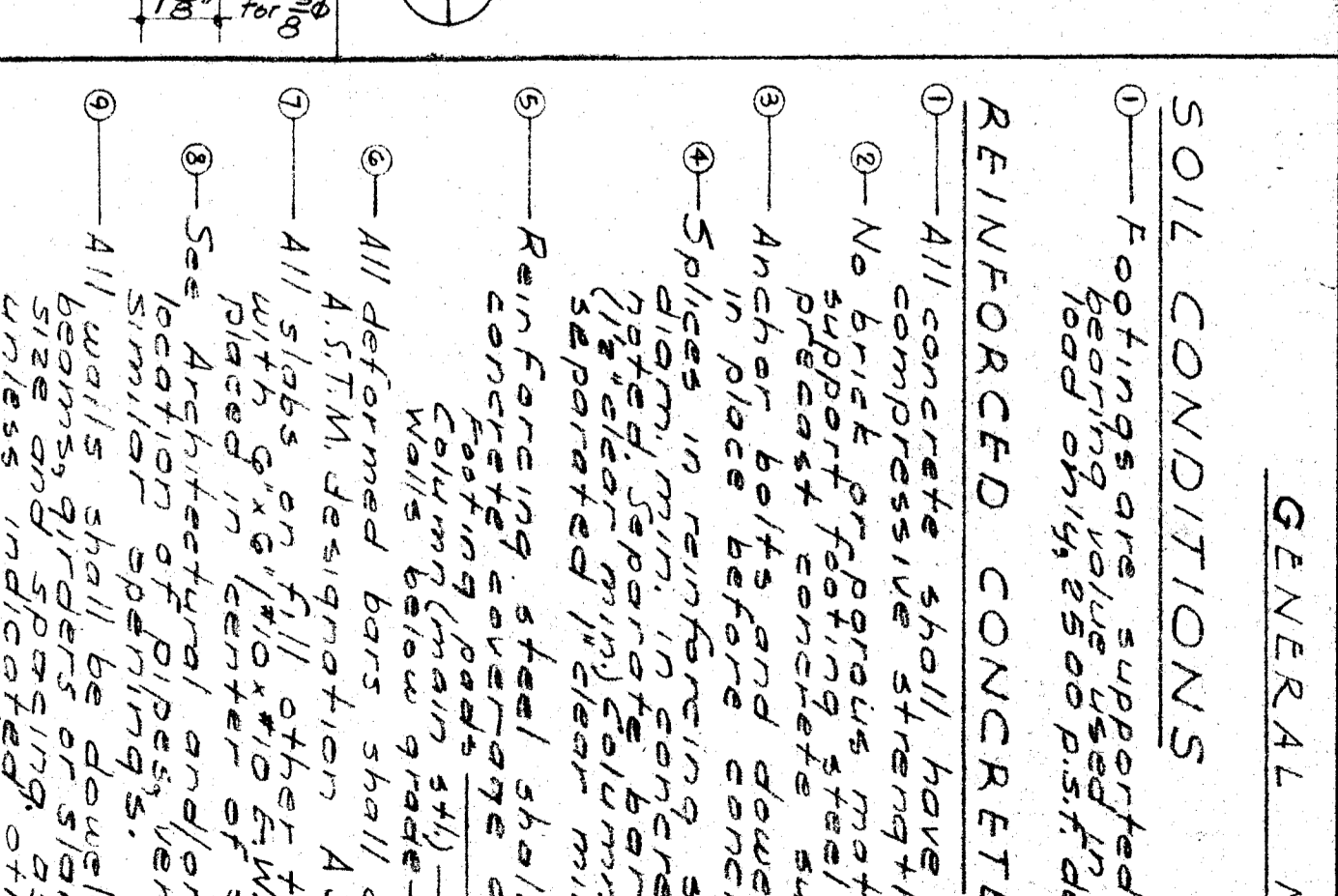
TYPICAL DIAPHRAGM CUT (N)



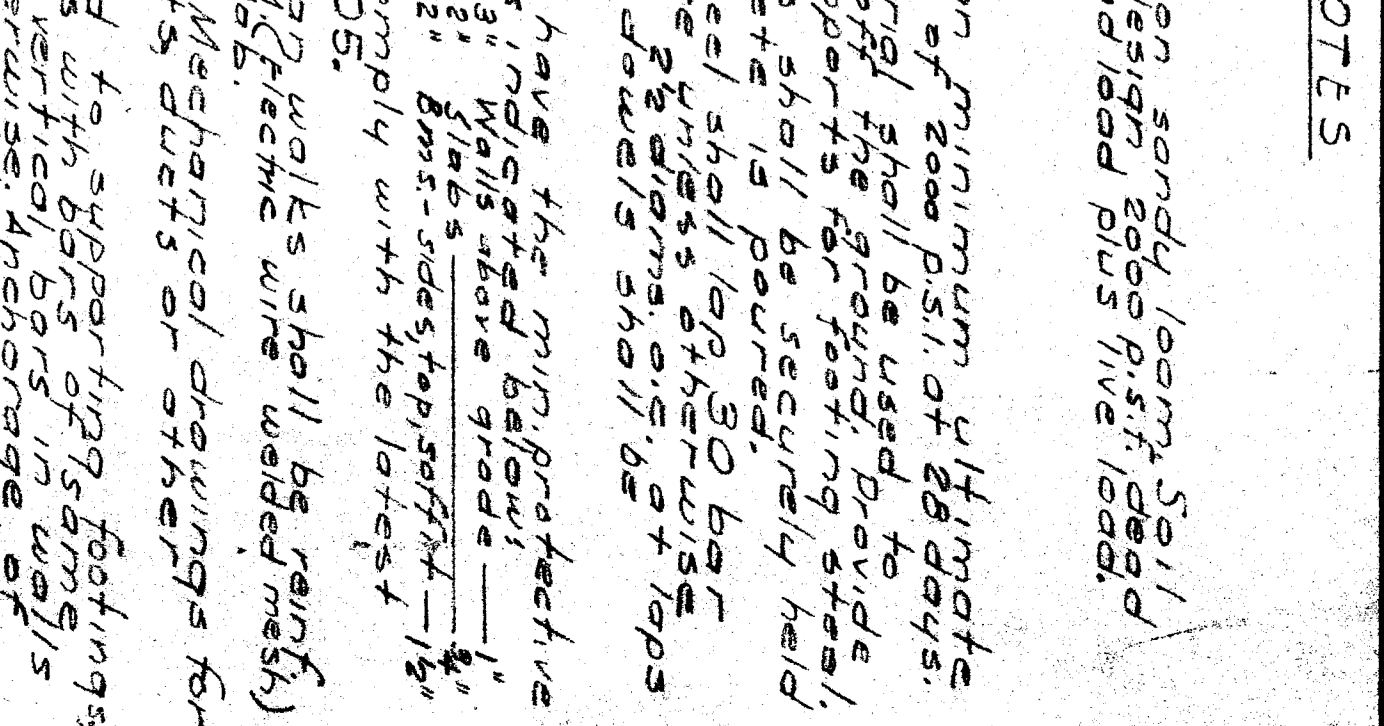
TYPICAL DRAFT STOP (H)



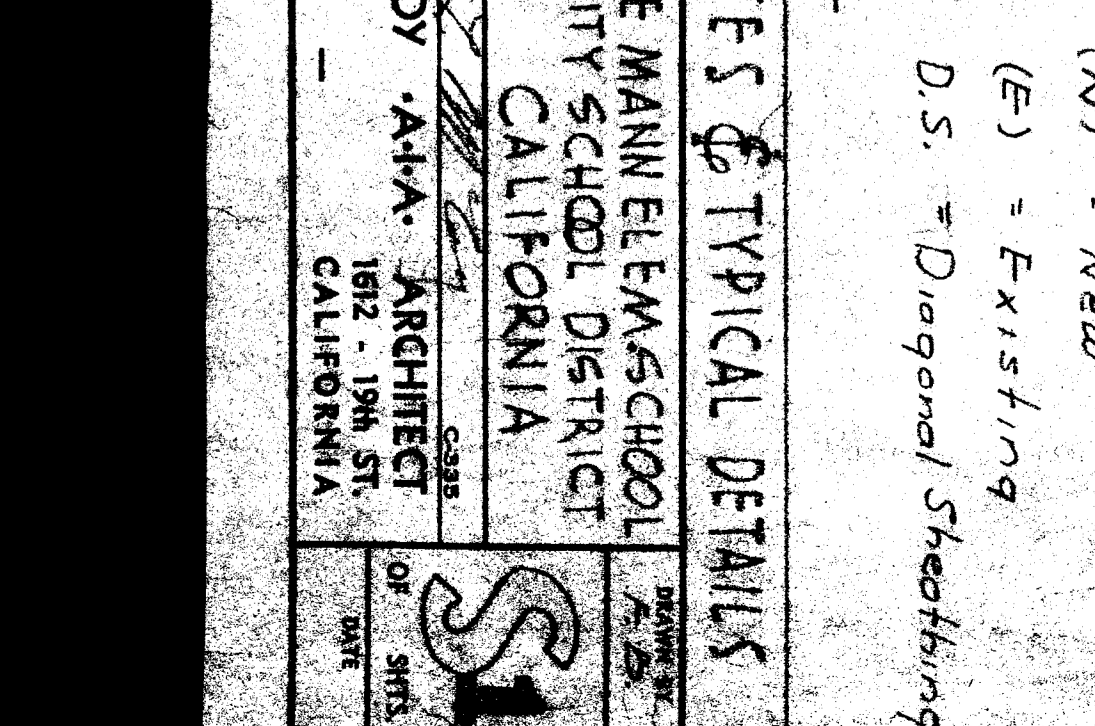
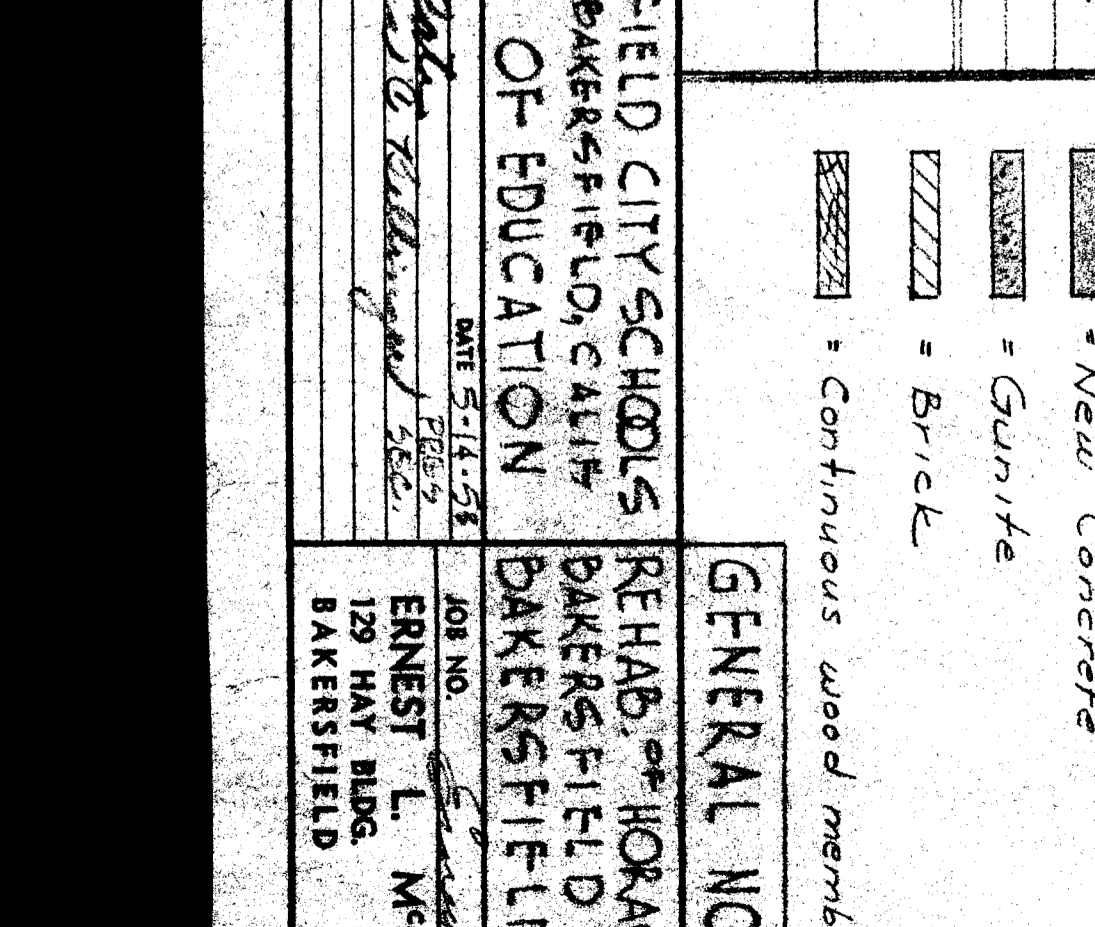
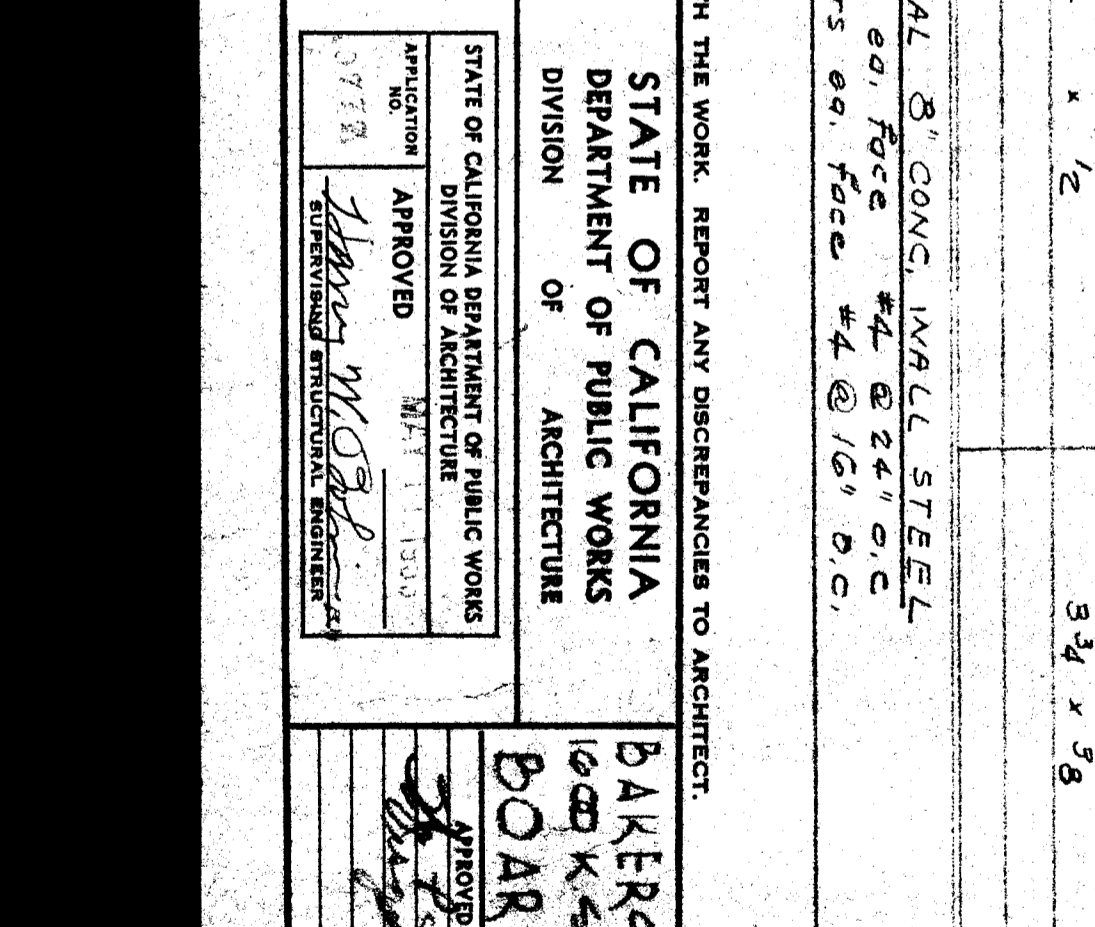
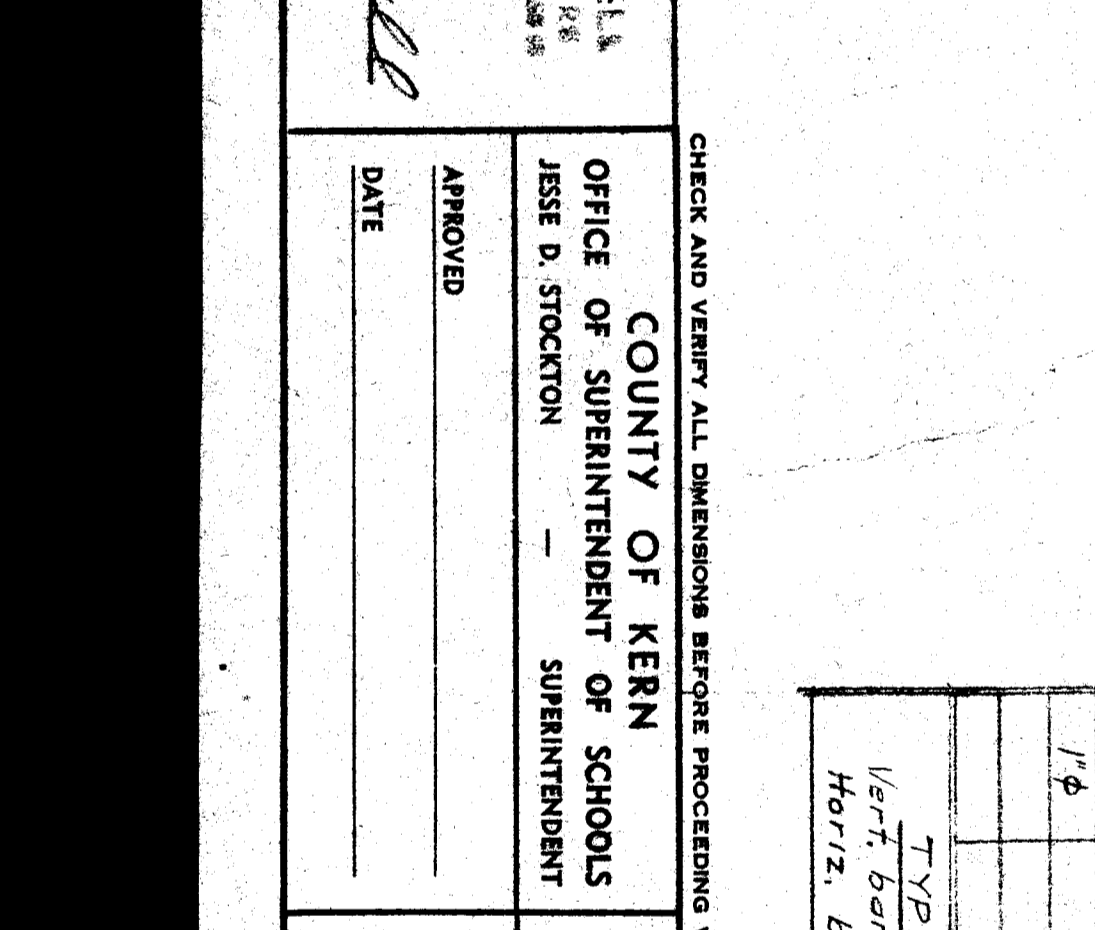
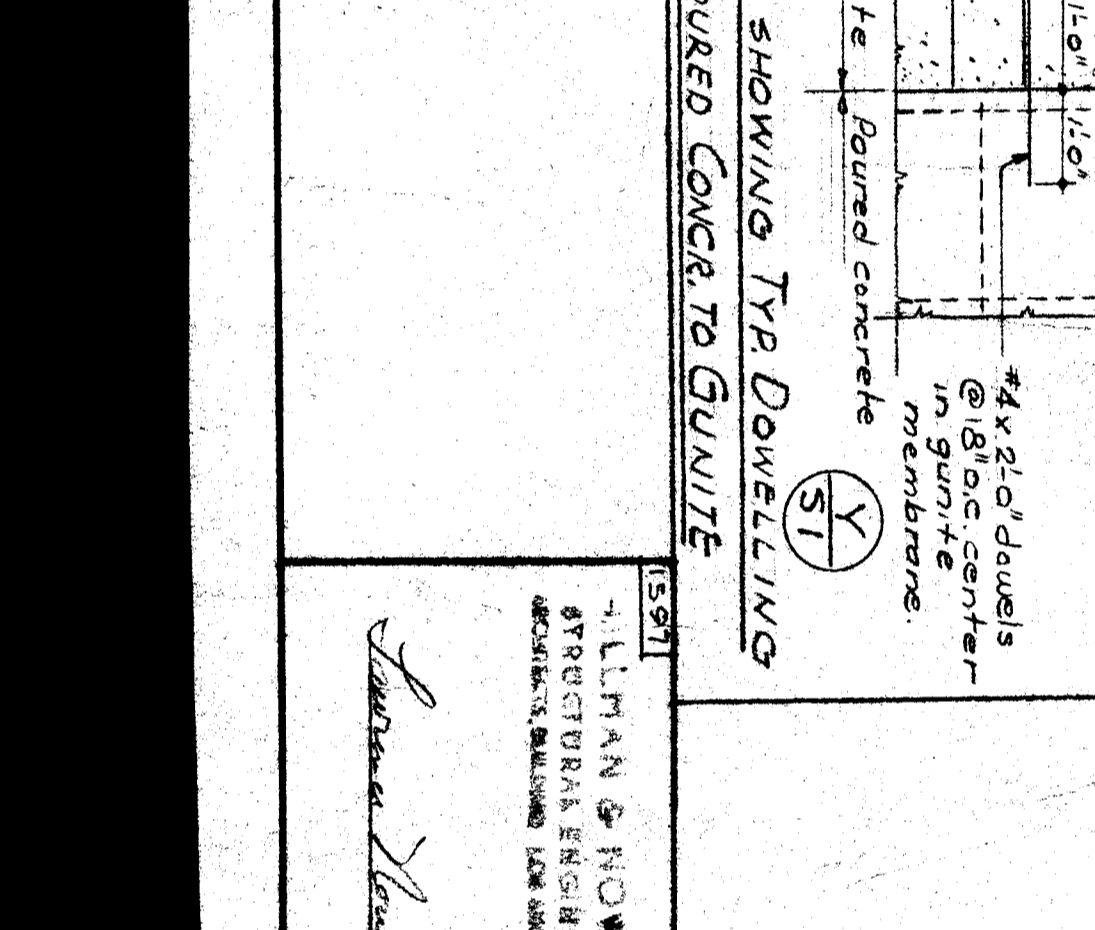
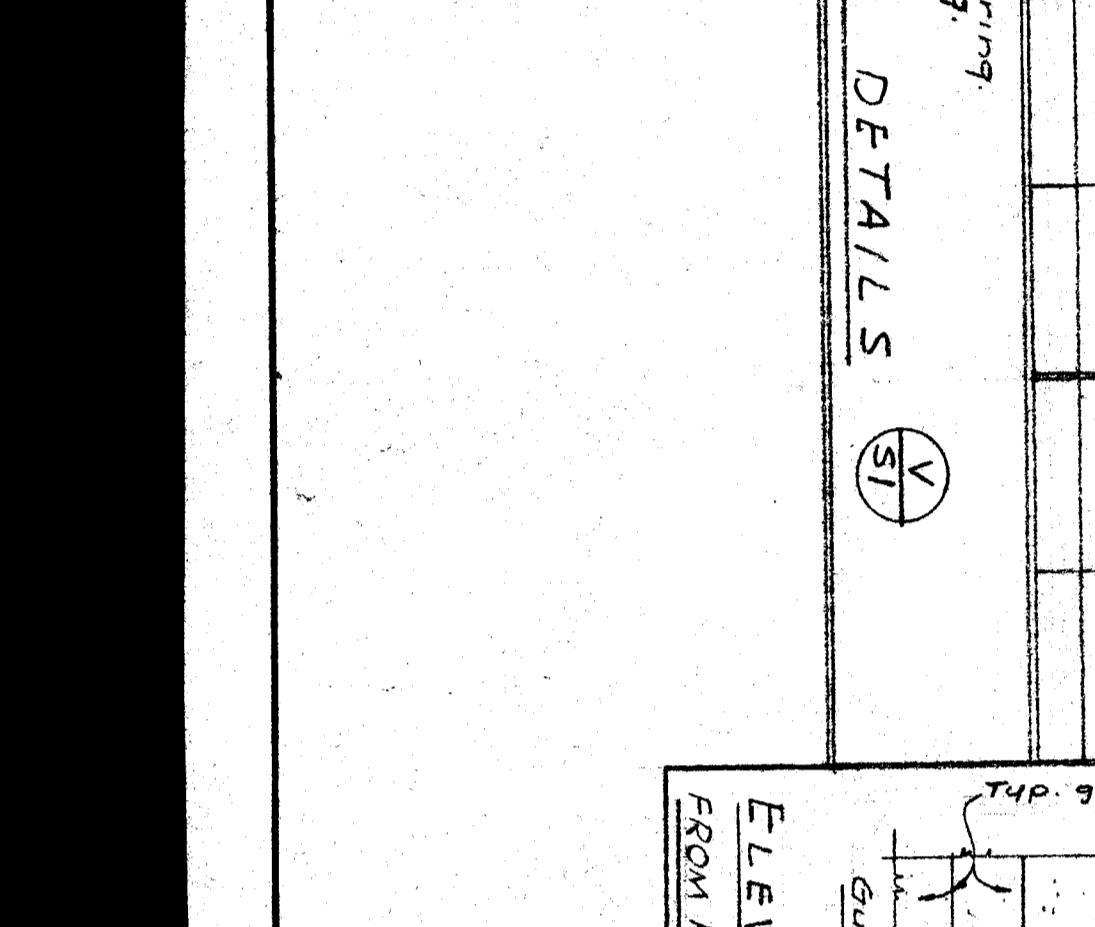
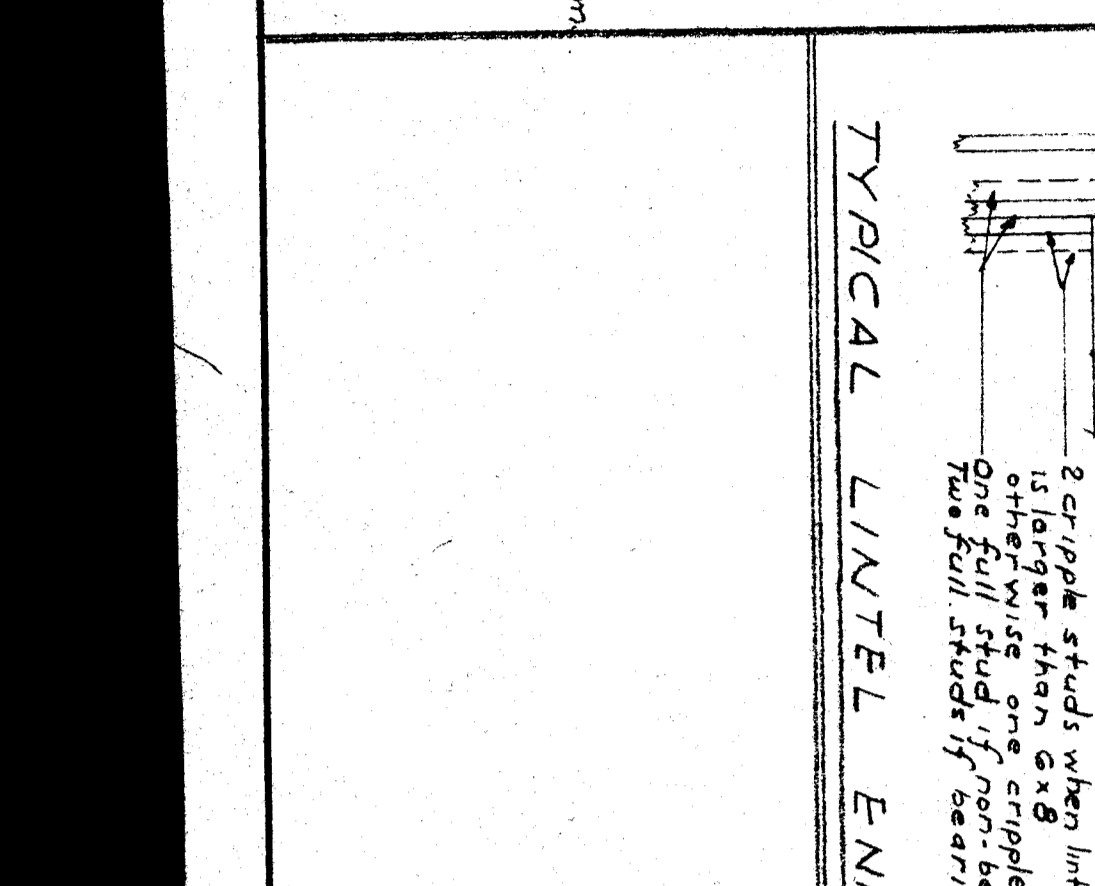
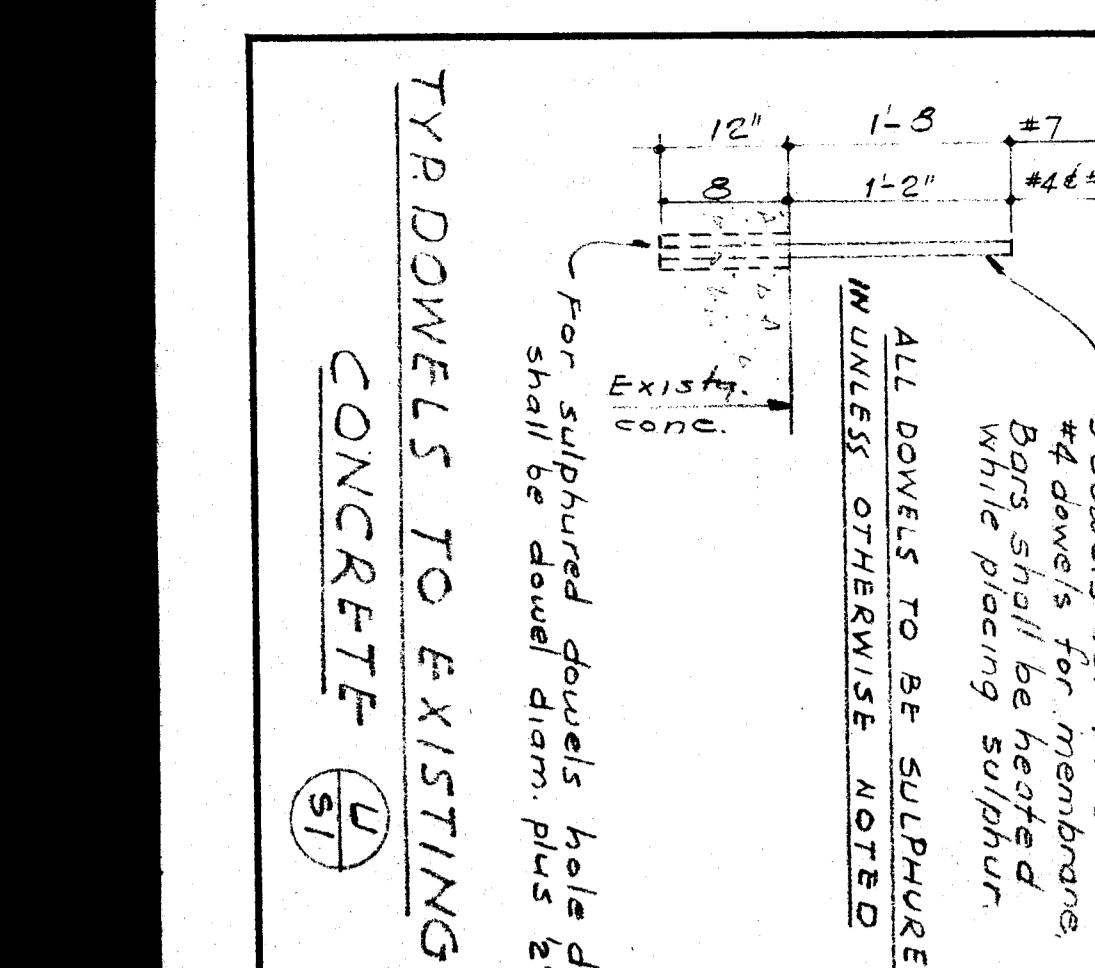
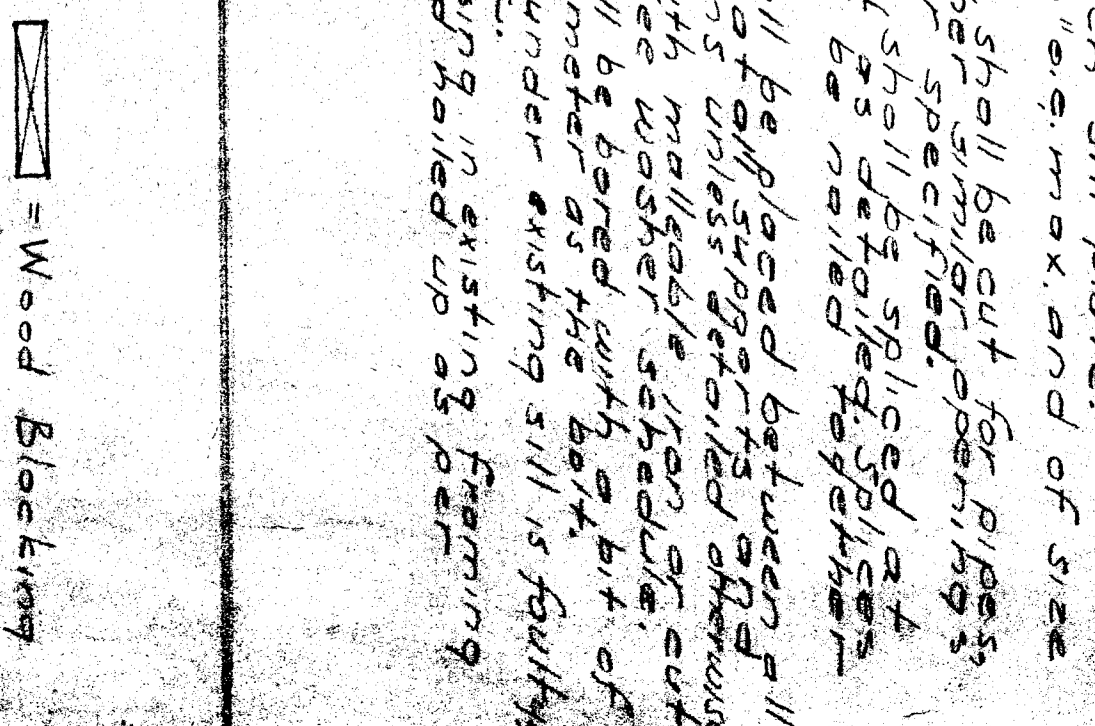
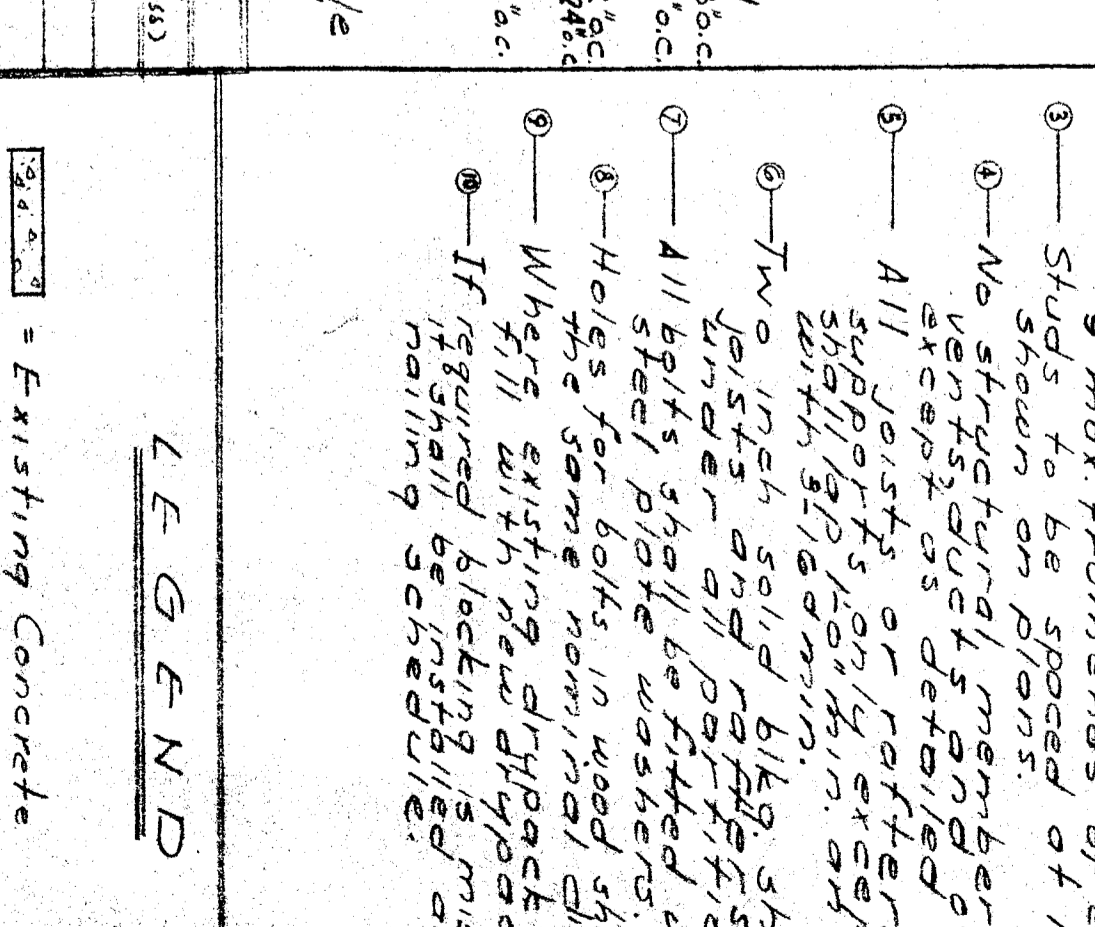
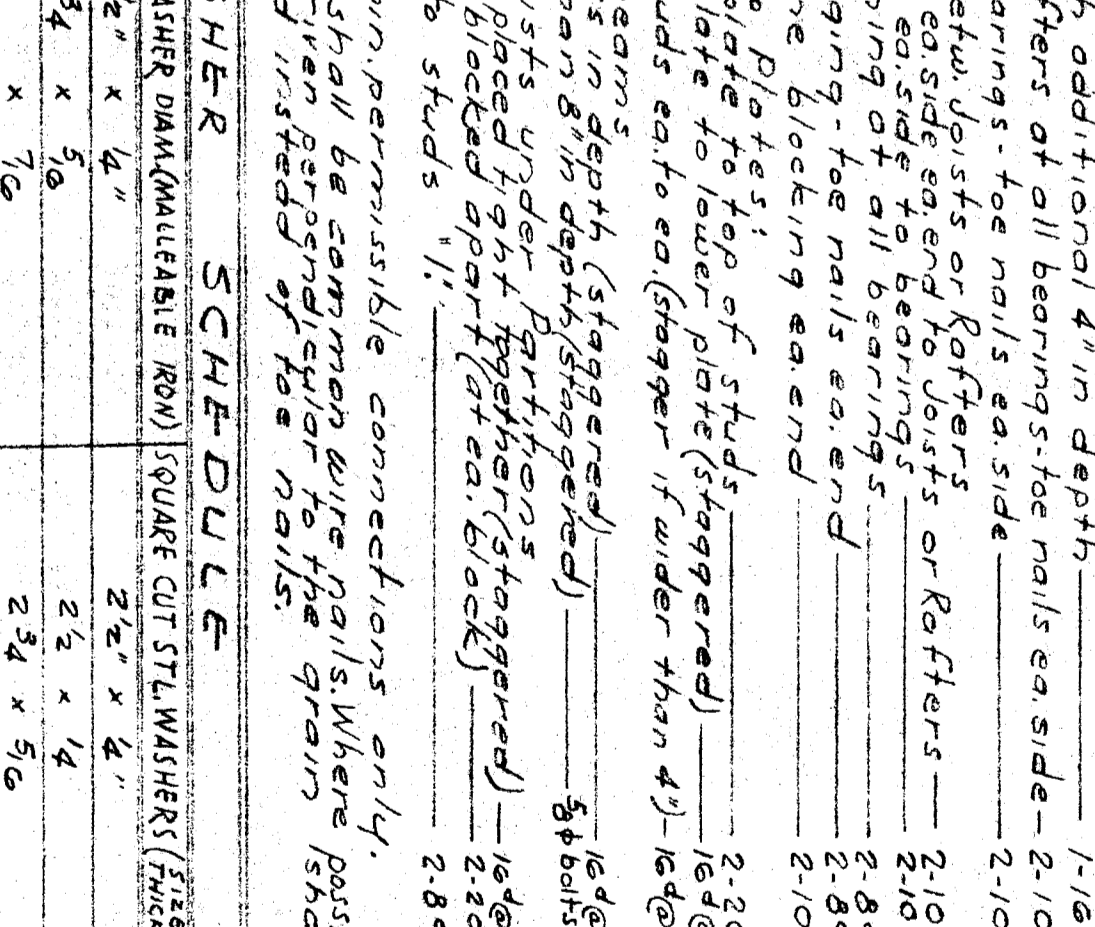
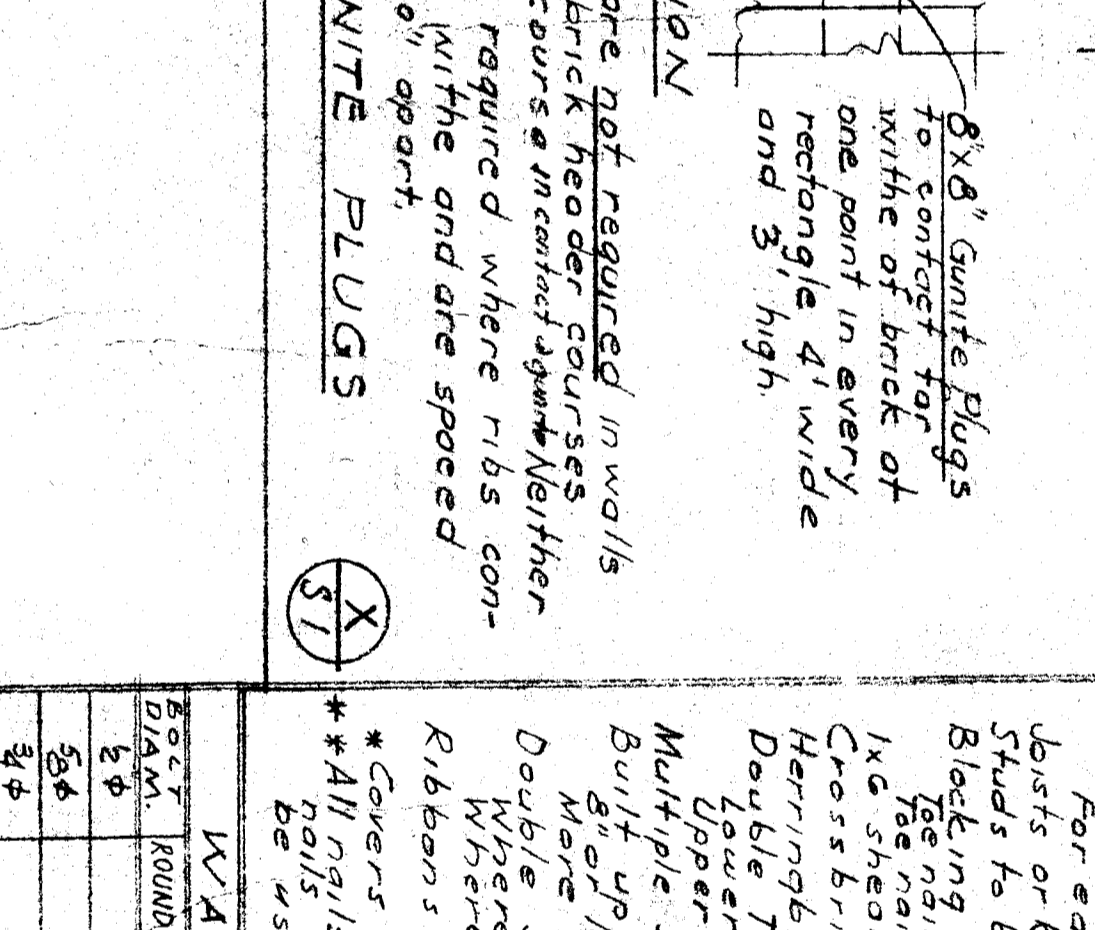
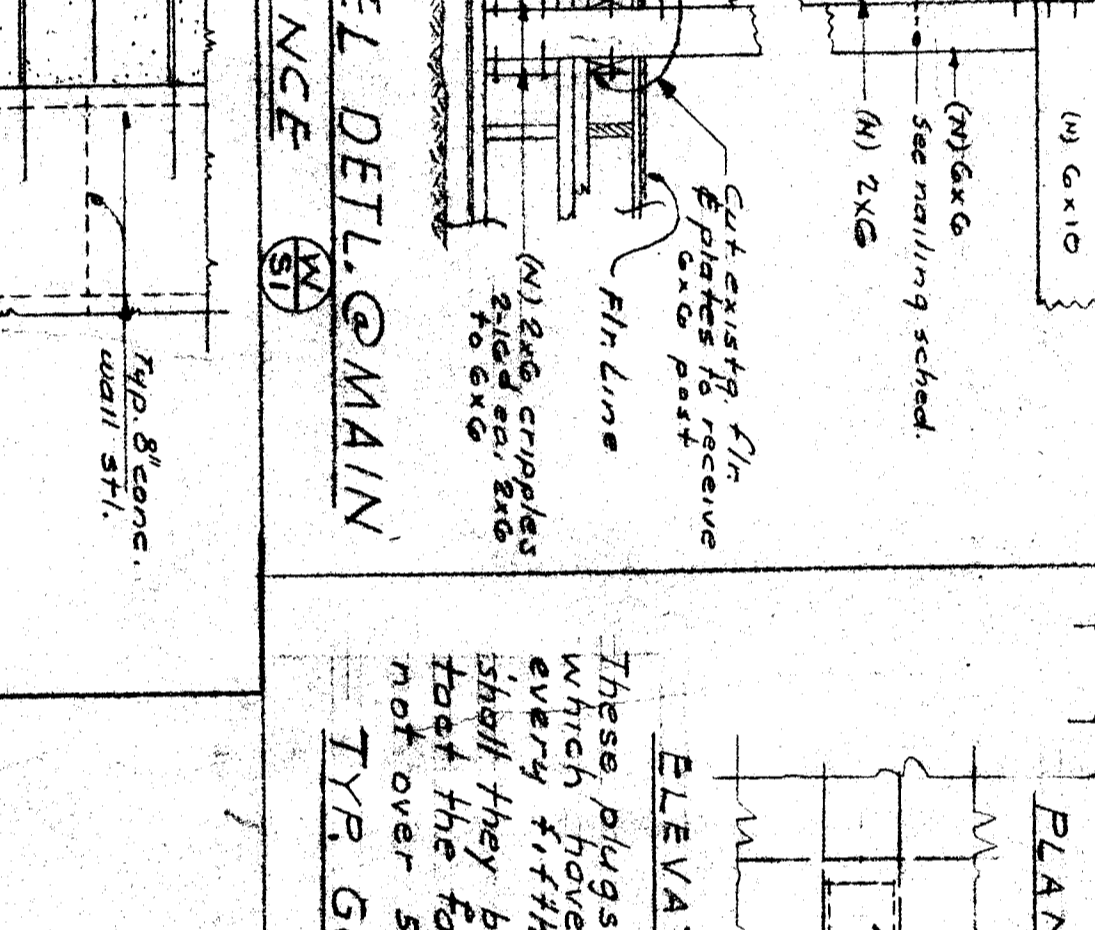
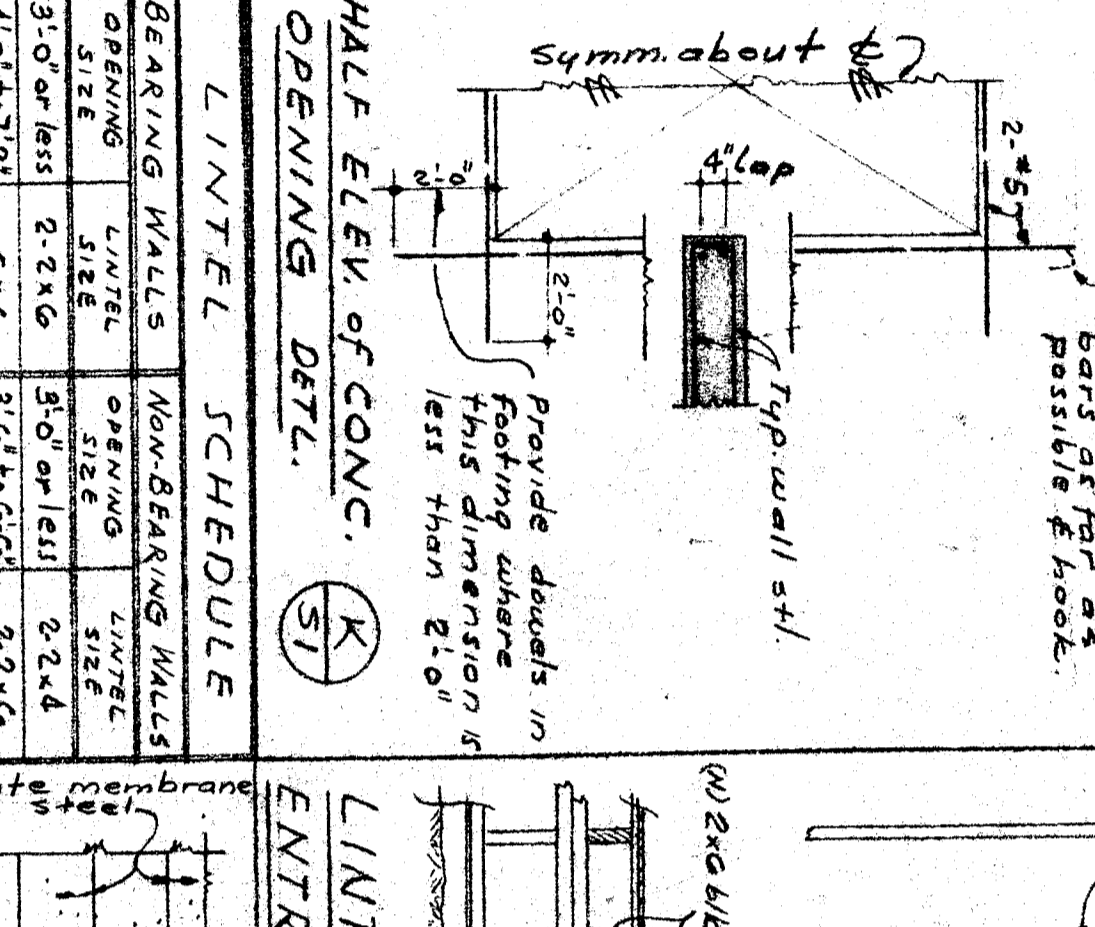
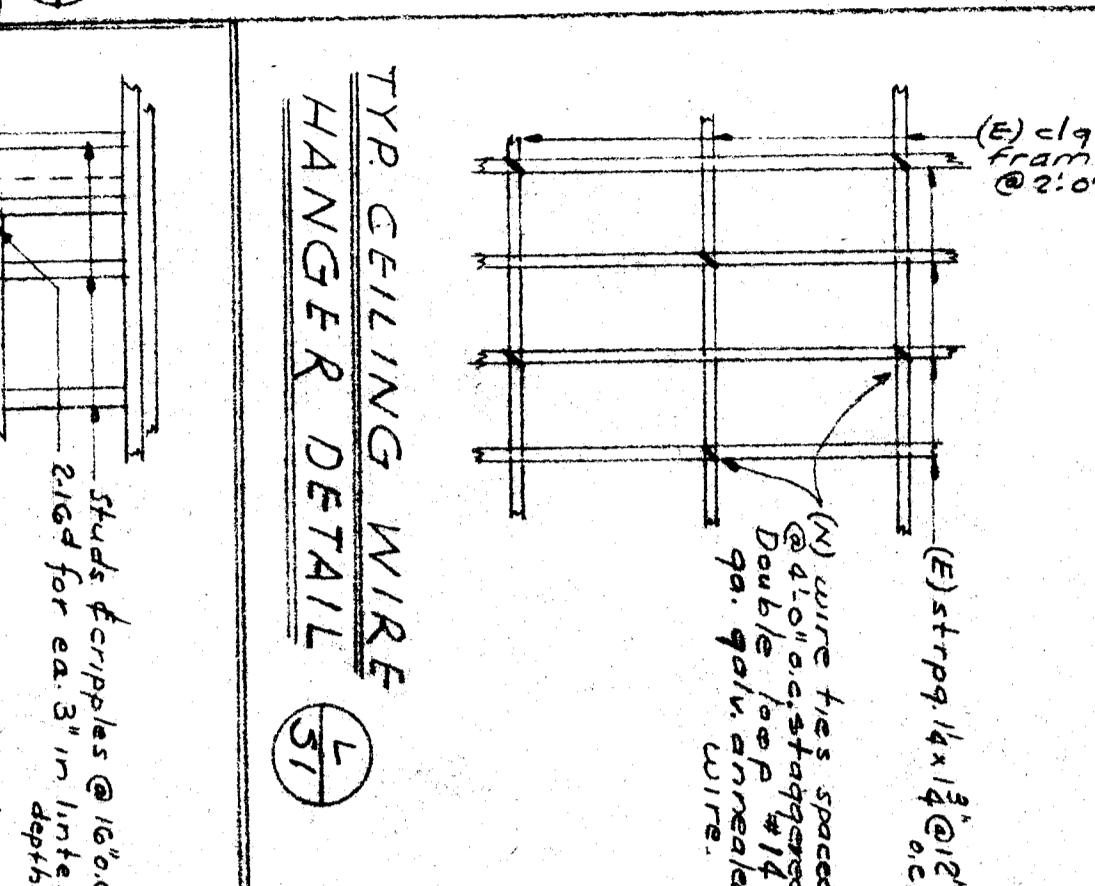
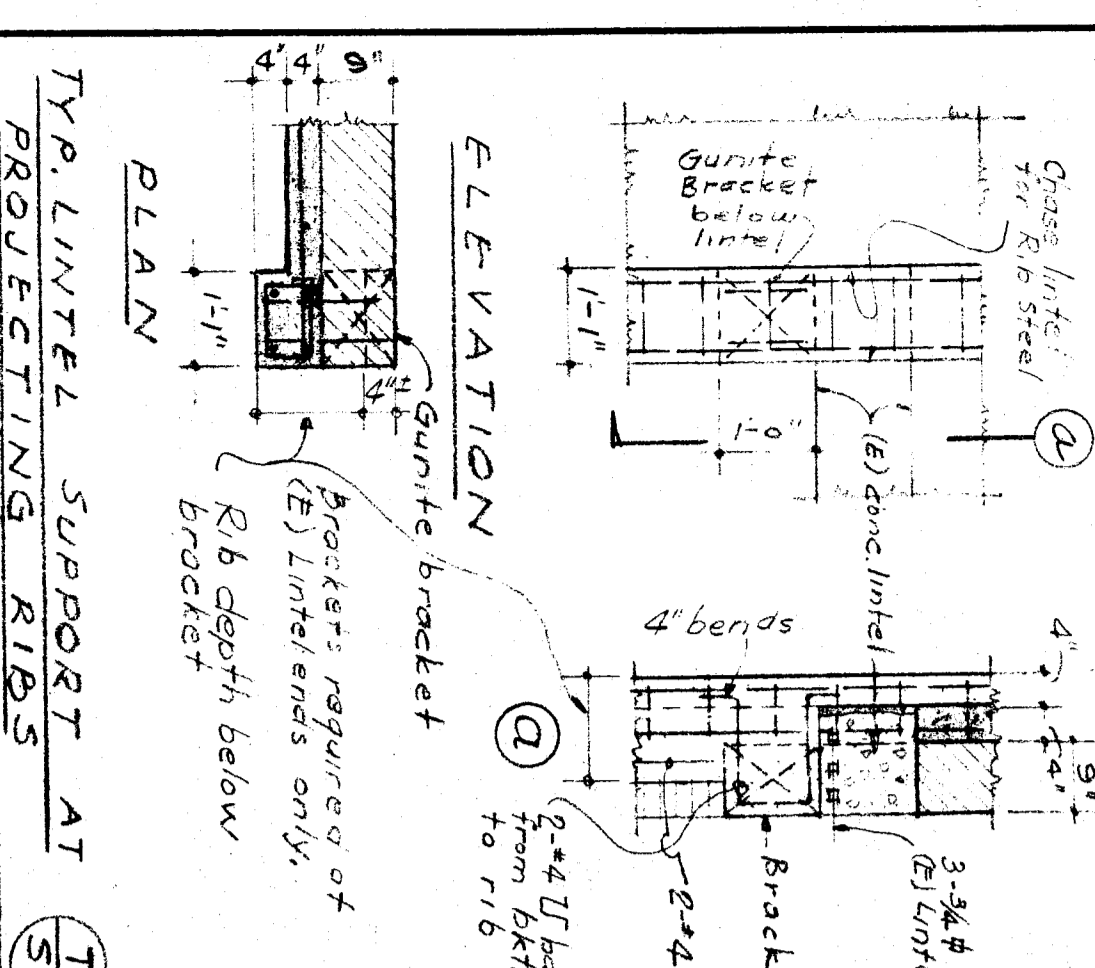
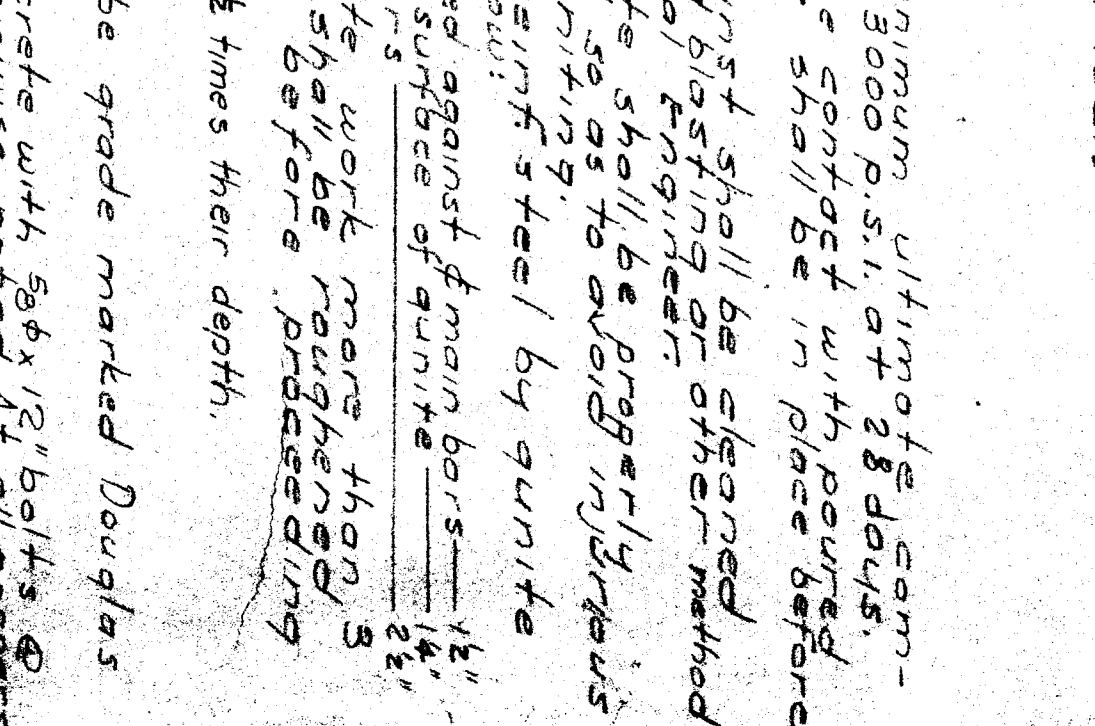
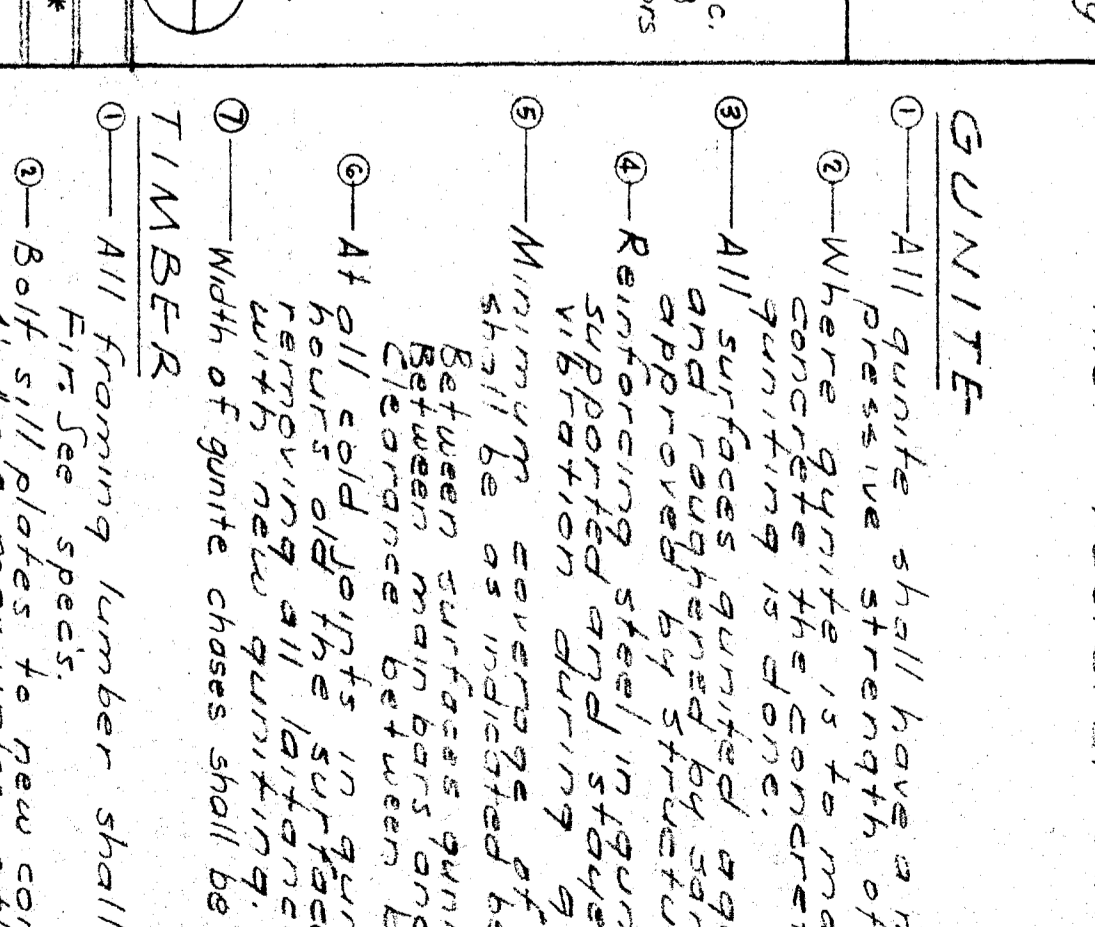
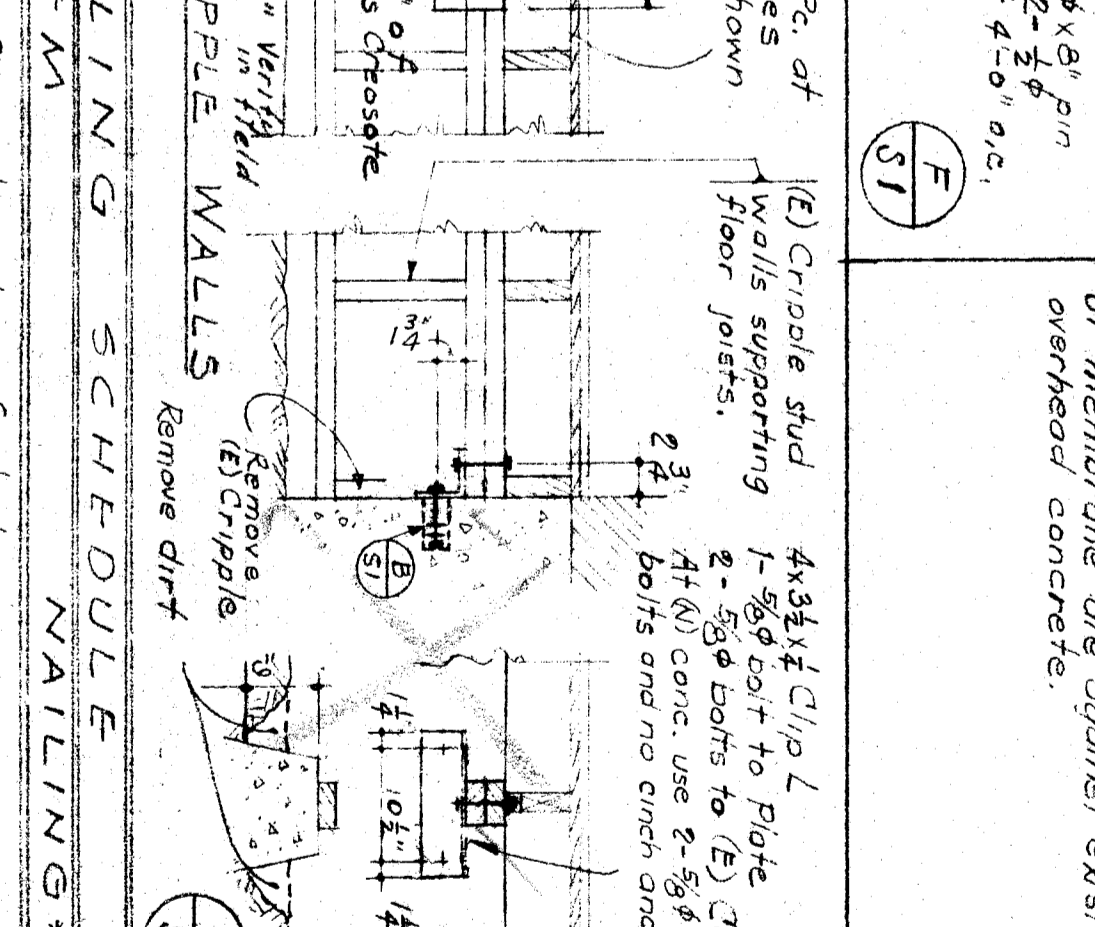
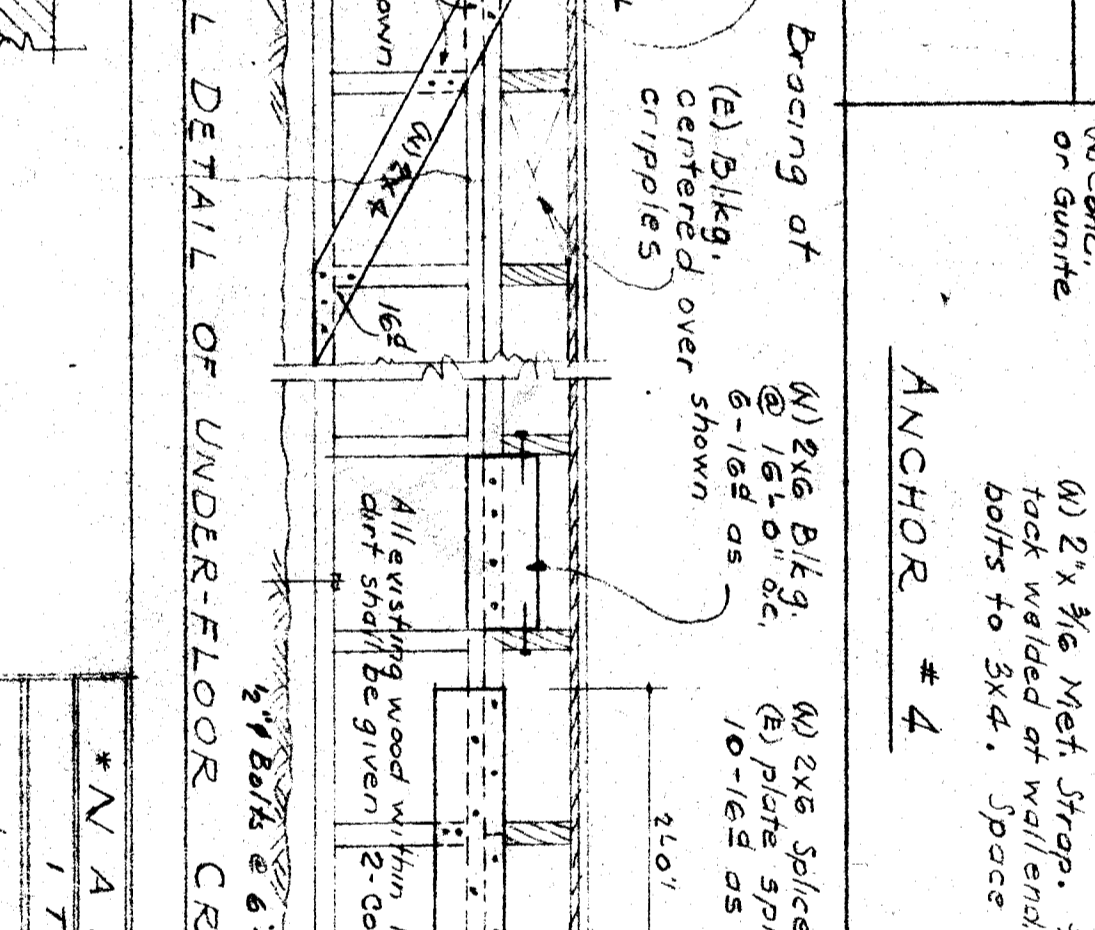
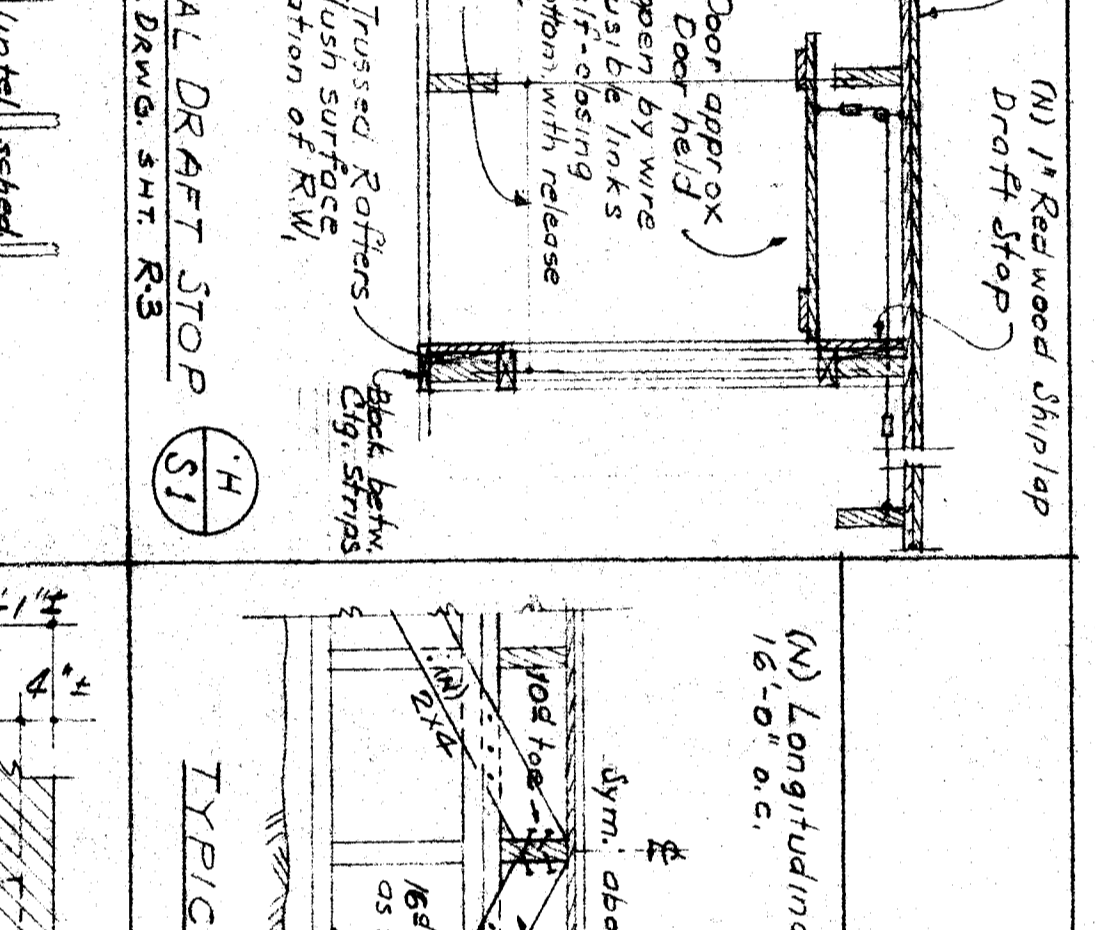
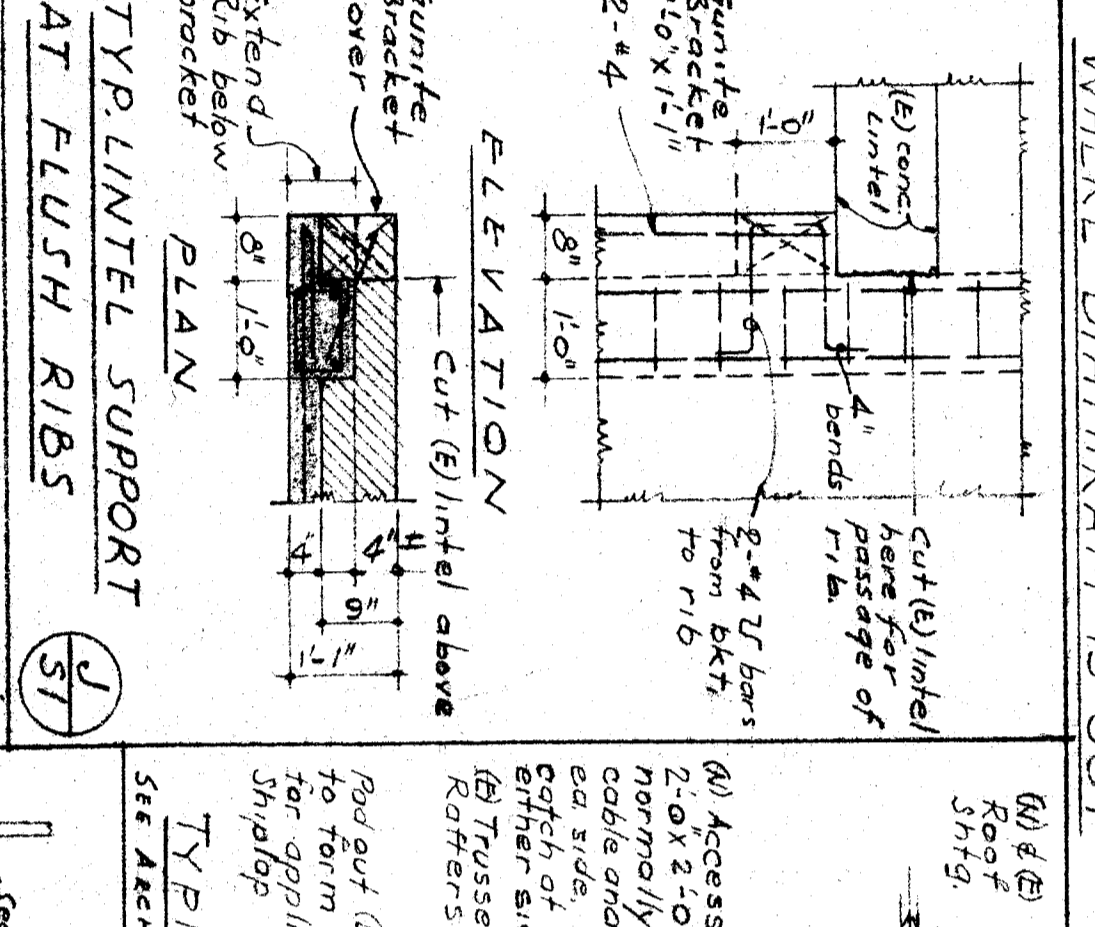
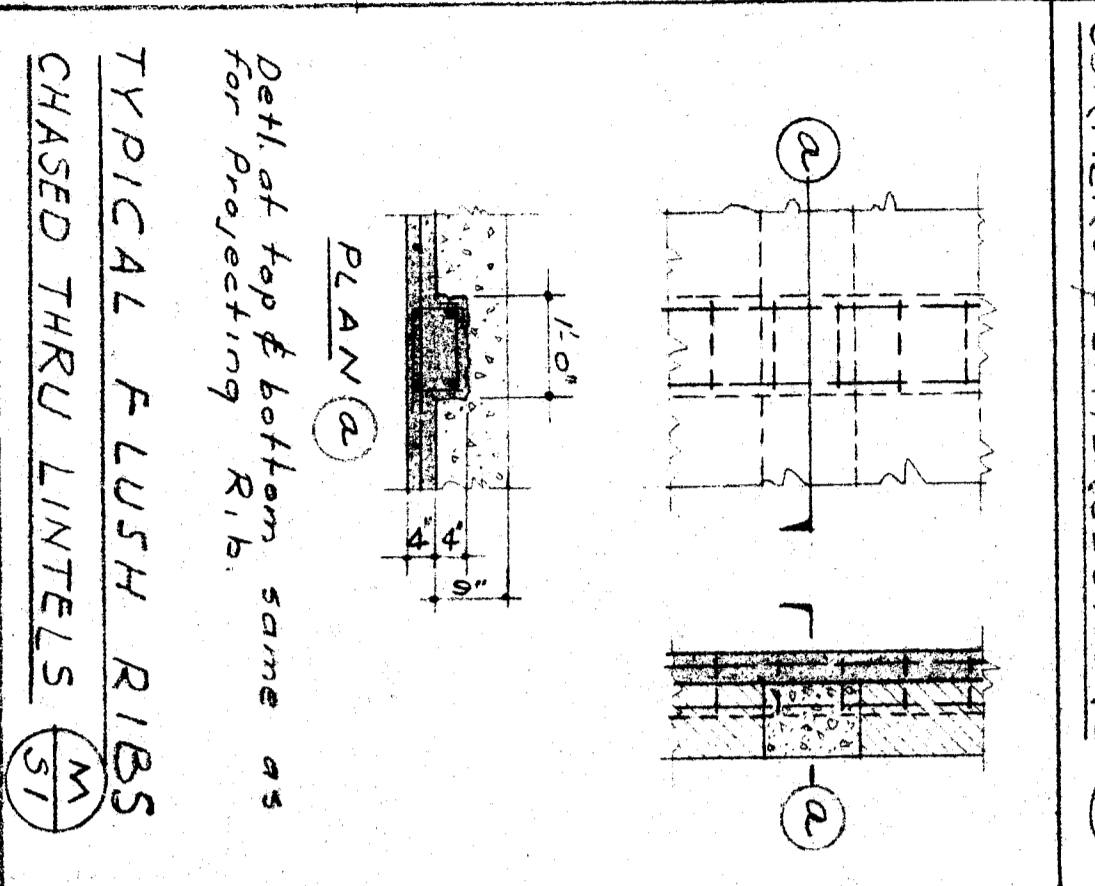
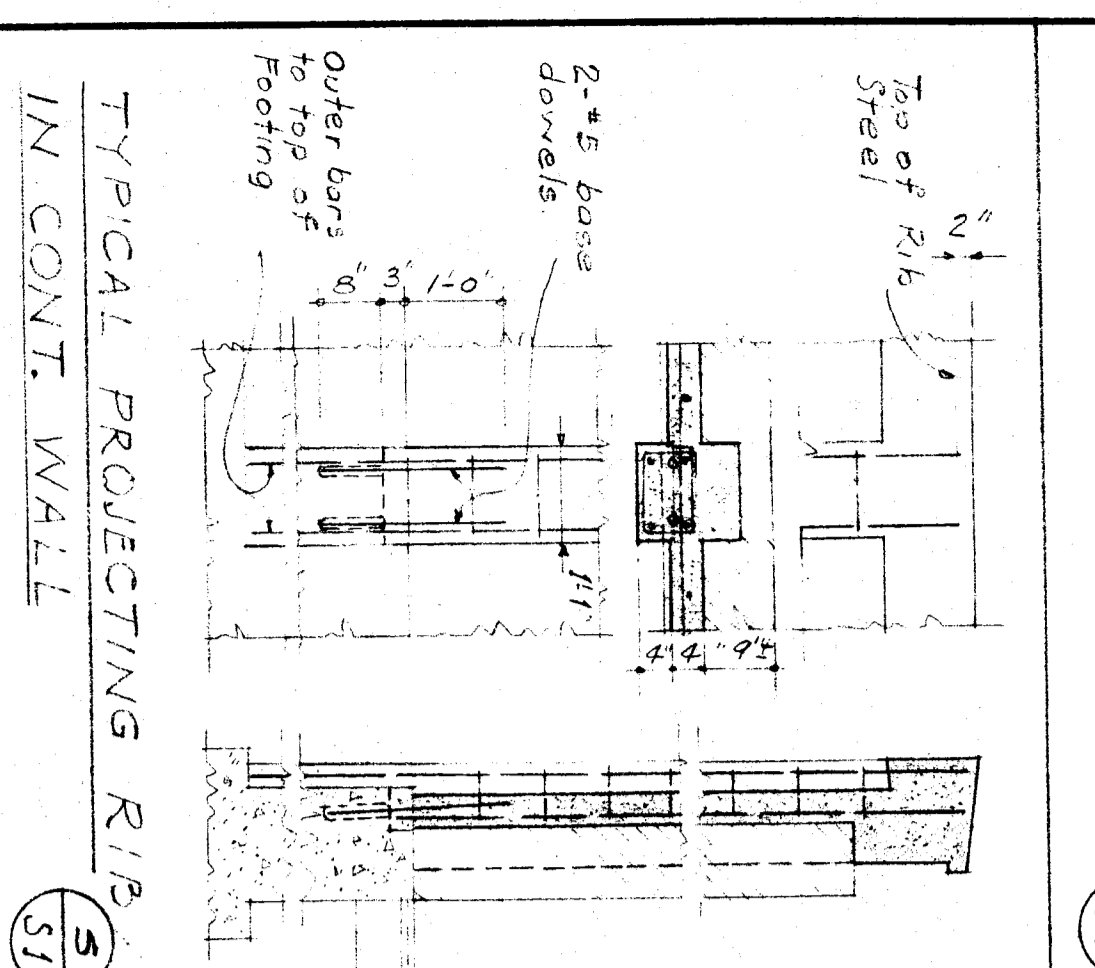
TYPICAL DETAIL OF UNDER-FLOOR CRISPLE WALL (C)



TYPICAL GUNITITE PLUGS (X)



TYPICAL LINETEL SUPPORT AT FLUSH RIBS (J)



GENERAL NOTES

1. Footings are supported on sandy loam. Soil bearing value used in design 3000 p.s.f. Soil load shall be 800 p.s.f. dead load plus live load.

2. All concrete shall have a minimum ultimate compressive strength of 3000 p.s.f. at 28 days. No brick grout or mortar shall be used to provide lateral support for footing. Anchor bolts and dowels shall be securely held in place before concrete is poured.

3. Splices in reinforcing steel shall be staggered and staggered at least 48" apart. Splices shall be staggered at least 48" apart.

4. Reinforcing steel shall have the protection of a minimum 1/2" concrete cover. Reinforcing steel shall be lap spliced in accordance with A.S.T.M. specification A 305 with the following exceptions:

5. All slabs on fill other than 12" shall be reinforced in center of slab.

6. See drawings for details of electrical conduits for signal, telephone, fire alarm, etc.

7. All walls shall be designed for overturning, sliding, and bearing capacity. Footings shall be designed for overturning, sliding, and bearing capacity. Walls shall be designed for overturning, sliding, and bearing capacity.

8. Horizontal reinforcement shall be provided by 2 #4 bars at 16" o.c. for walls and by 2 #4 bars at 16" o.c. for slabs.

9. Where gunitite is used in contact with masonry, it shall be applied in accordance with the manufacturer's instructions.

10. Gunitite shall be applied in accordance with the manufacturer's instructions.

11. All framing lumber shall be grade marked Douglas Fir-Speck.

12. Bolt size shall be as shown on drawings. All bolts shall be galvanized steel.

13. Shuds to be spaced at 16" o.c. max. and of size shown on plans.

14. No structural members shall be cut for pipes, conduits, or other services unless specifically approved by the engineer.

15. All gunitite shall be applied in accordance with the manufacturer's instructions.

16. Where some nominal diameter is shown, it shall be the nominal diameter of the pipe.

17. If required, leveling shall be raised up as per leveling schedule.

LEGEND

Existing Concrete (N) = New

Existing (E) = Existing

D.S. = Diagonal Sheathing

Continuous wood member

GENERAL NOTES & TYPICAL DETAILS

REHAB. OF HORACE MANN ELEMENTARY SCHOOL

BAKERSFIELD CITY SCHOOLS

120 MAY BLDG. BAKERSFIELD CALIFORNIA

ERNEST L. MCROY - ARCHITECT

182 - 19th St. BAKERSFIELD CALIFORNIA

CHECK AND VERIFY ALL DIMENSIONS BEFORE PROCEEDING WITH THE WORK. REPORT ANY DISCREPANCIES TO ARCHITECT.

NO.	DESCRIPTION	DATE
1
2
3
4
5
6
7
8
9
10

MAINTENANCE SCHEDULE

NO.	DESCRIPTION	DATE
1
2
3
4
5
6
7
8
9
10

MAINTENANCE SCHEDULE

NO.	DESCRIPTION	DATE
1
2
3
4
5
6
7
8
9
10

MAINTENANCE SCHEDULE

NO.	DESCRIPTION	DATE
1
2
3
4
5
6
7
8
9
10

MAINTENANCE SCHEDULE

NO.	DESCRIPTION	DATE
1
2
3
4
5
6
7
8
9
10