

ROOF PLAN. SCALE 1/8" = 1'-0"

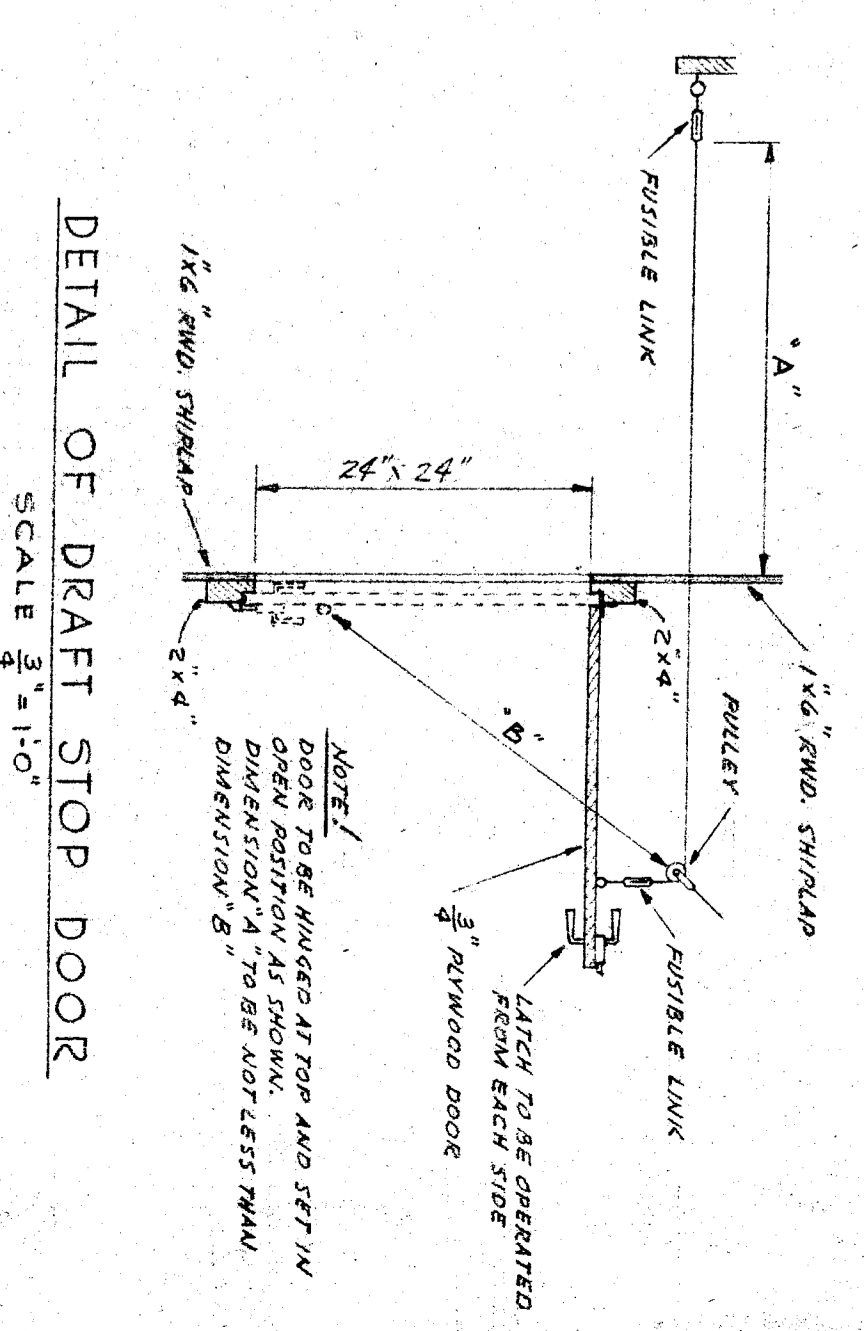
- LEGEND**
- ⊙ EXISTING 16" TURBINE ROTARY TYPE VENTILATORS TO HAVE BEARINGS REPLACED AND PUT IN FIRST CLASS OPERATING CONDITION.
 - ⊗ NEW 16" ROSS'S SYMPOIRE AS MANUFACTURED BY WESTERN ENGINEERING CO. OR EQUAL
 - ⊕ EXISTING RADIATOR VENTS
 - ⊖ DOWNSPOUTS TO BE REMOVED, THEN REPLACED AFTER GUNTING

CHECK AND VERIFY ALL DIMENSIONS BEFORE PROCEEDING WITH THE WORK. REPORT ANY DISCREPANCIES TO ARCHITECT.

APPROVED	COUNTY OF KERN OFFICE OF SUPERINTENDENT OF SCHOOLS JESSE D. STOCKTON SUPERINTENDENT	STATE OF CALIFORNIA DEPARTMENT OF PUBLIC WORKS DIVISION OF ARCHITECTURE
DATE		

APPROVED	BOARD OF EDUCATION BAKERSFIELD CALIFORNIA	BOARD OF HOPE AGE MANN ELEM. SCH. BAKERSFIELD CITY SCHOOL DIST. BAKERSFIELD CALIFORNIA
DATE	11-15-53	11-15-53
APPROVED	ERNEST L. MCGOY ARCHITECT 602 - 7TH ST. BAKERSFIELD CALIFORNIA	
DATE		

NOTE:
 1. SECTION KNEE WILL CONSIST OF REMOVAL OF CENTER ROOF BEAM AS NOTED.
 2. REMOVAL OF OLD ROOFING OVER ENTIRE ROOF AREA INCLUDING TRUSS ROOM ADDITION.
 3. NEW ROOF VENTS AS NOTED REPLACING EXISTING VENTS, ORIGINAL SHEATHING OVER ENTIRE ROOF AND NEW ROOFING. SEE SPEC'S FOR ITEMS PERTAINING THERE TO.
 4. PROVIDE AND INSTALL DRAFT STOPS AS SHOWN ON ROOF PLAN. SEE STRUCTURAL DRAWINGS FOR DETAILS.
 5. SEE SPEC'S FOR ITEMS PERTAINING TO TRUSS ROOM ADDITION.



DETAIL OF DRAFT STOP DOOR
SCALE 3/8" = 1'-0"

Draft stop
to be removed