

EQUIPMENT ANCHORAGE
 FOR BUILDINGS 100, 200, 300, 400, 500, 600, 700

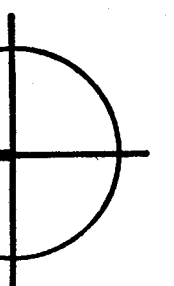
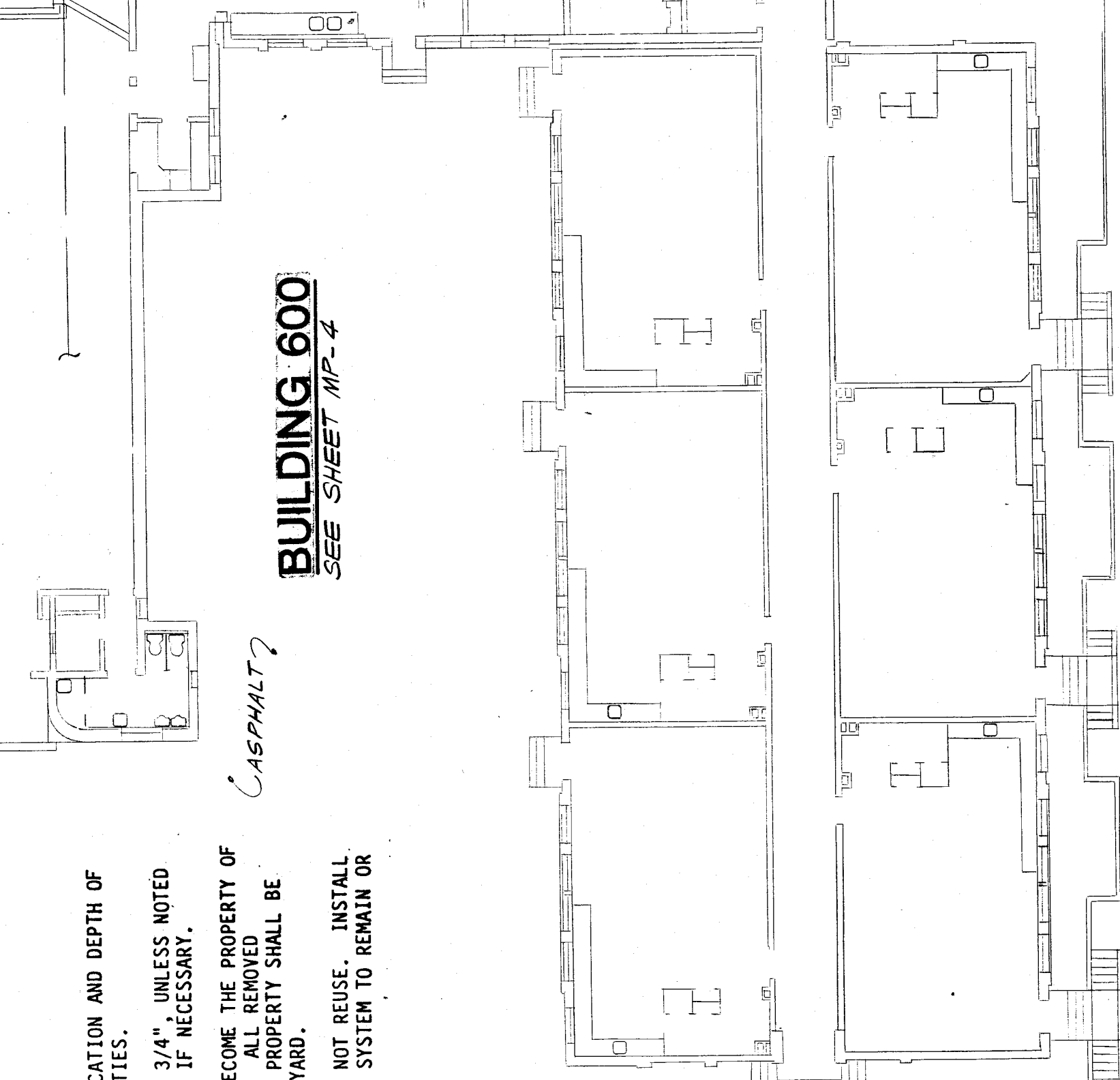
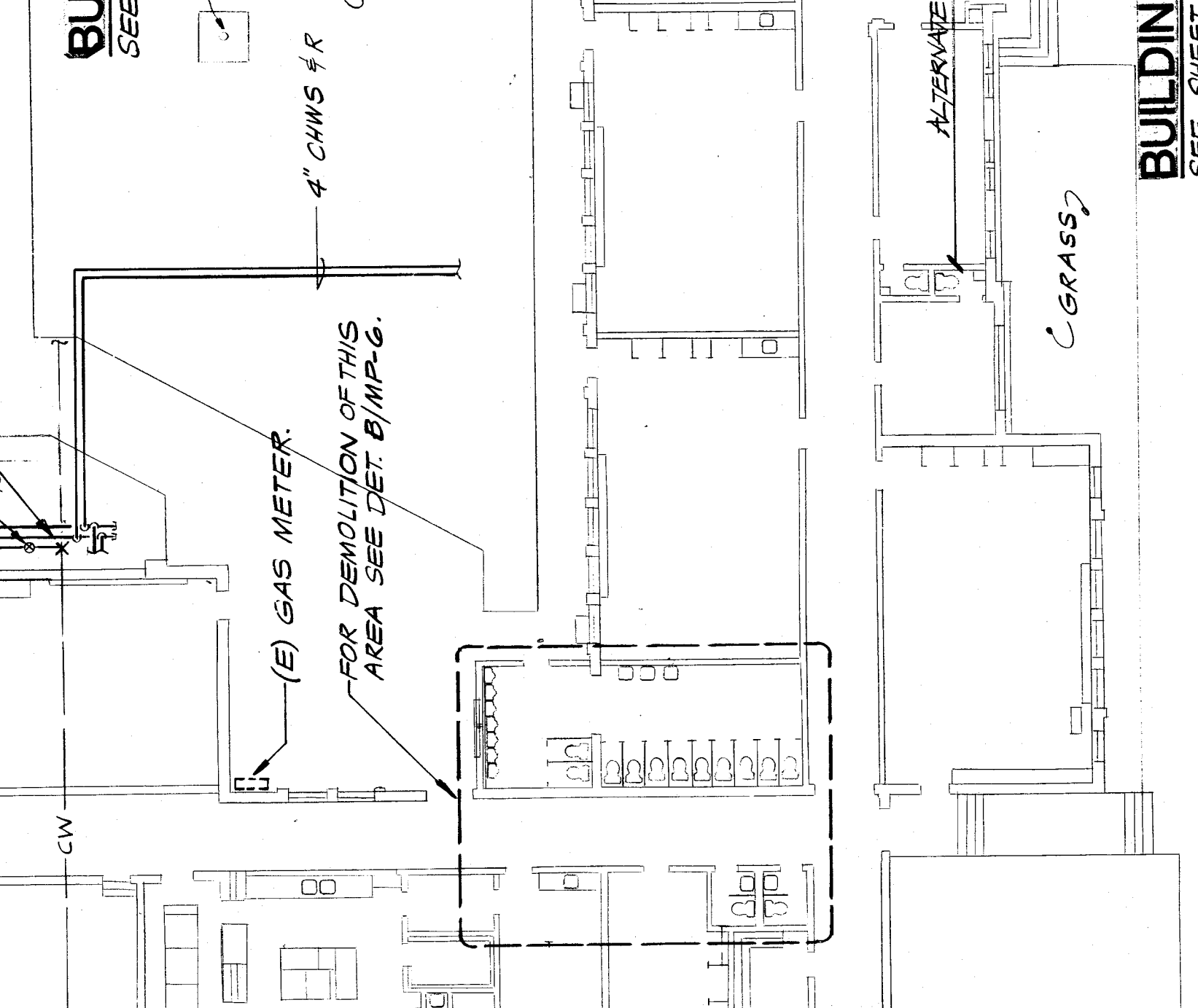
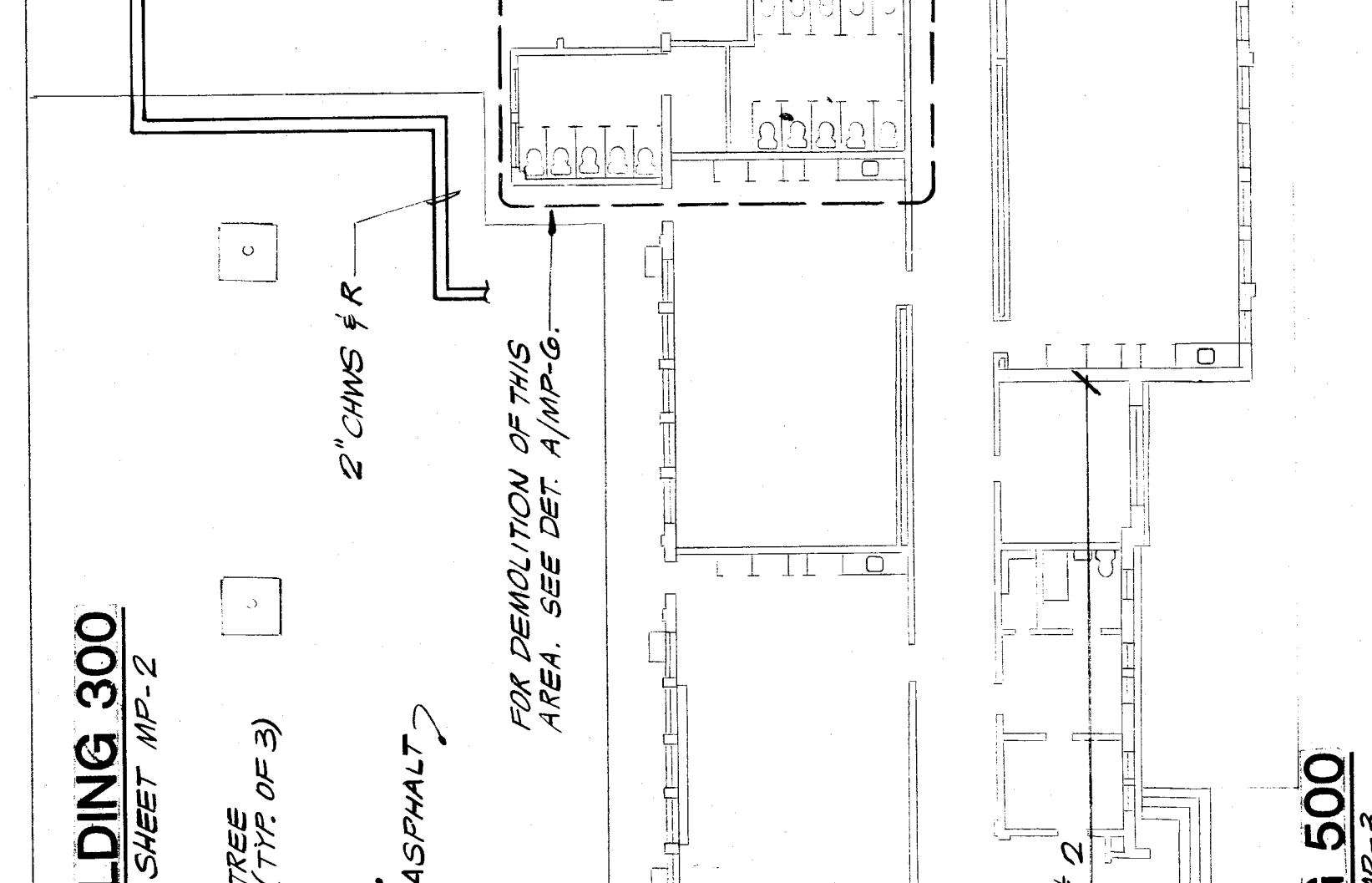
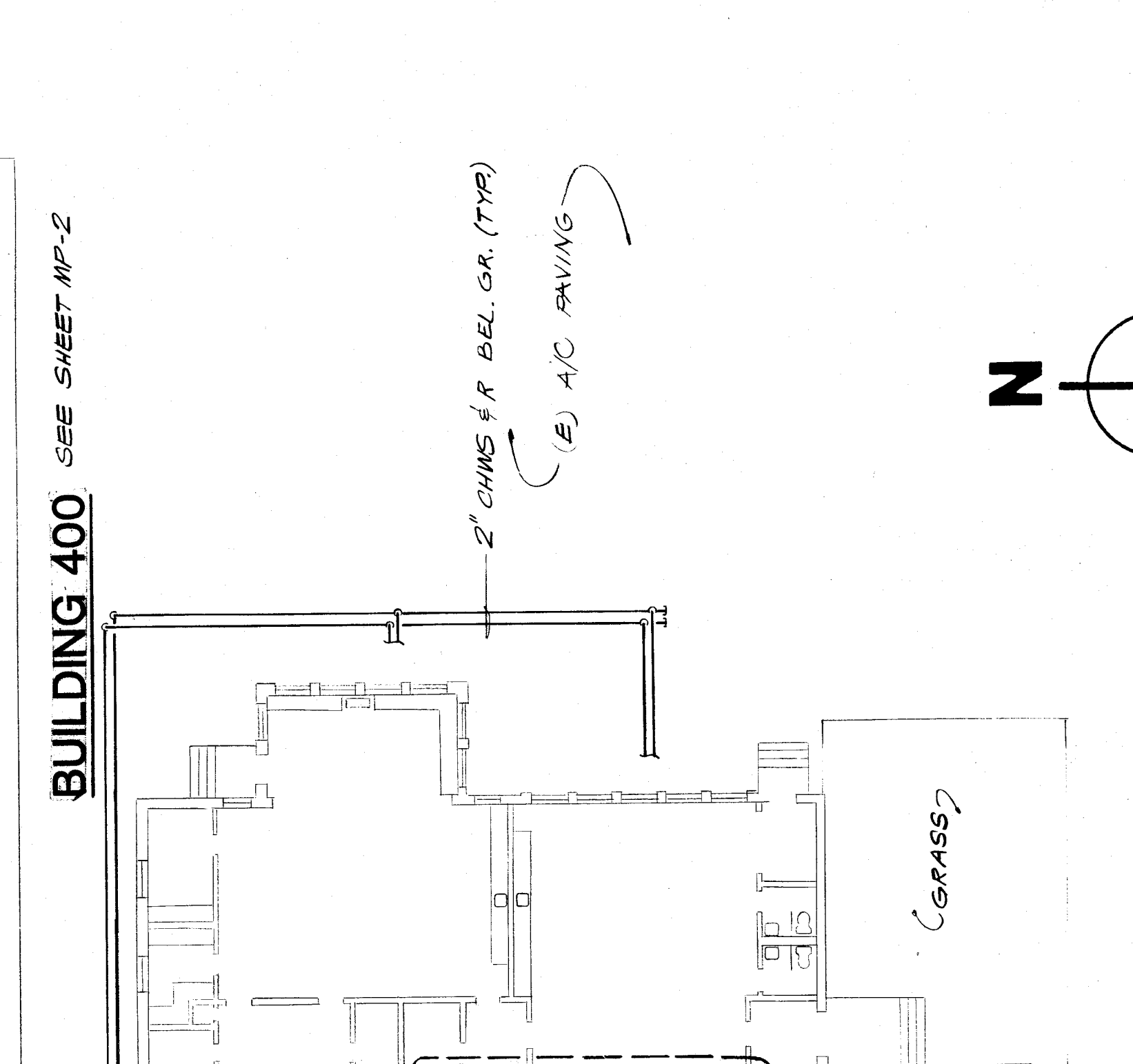
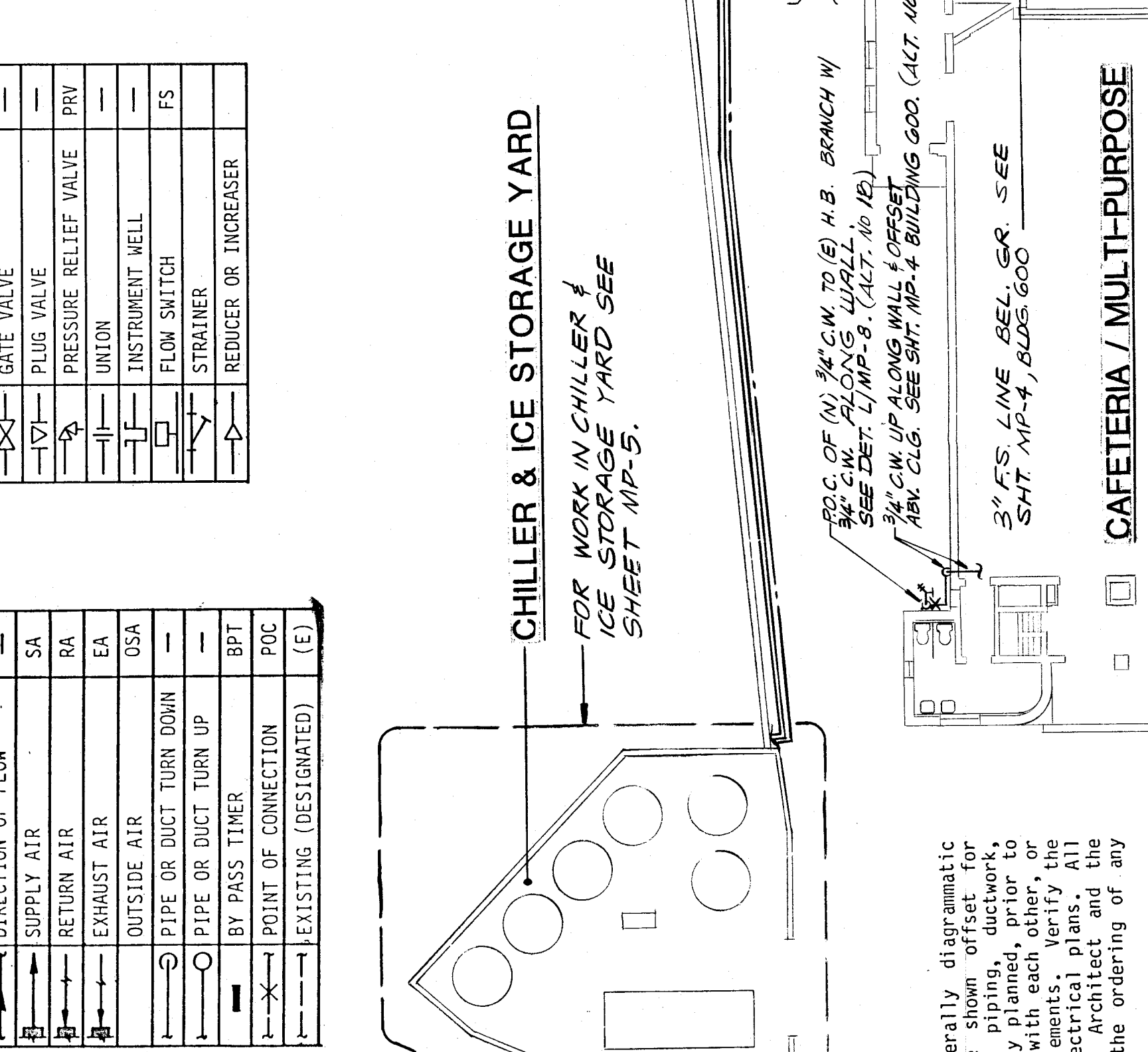
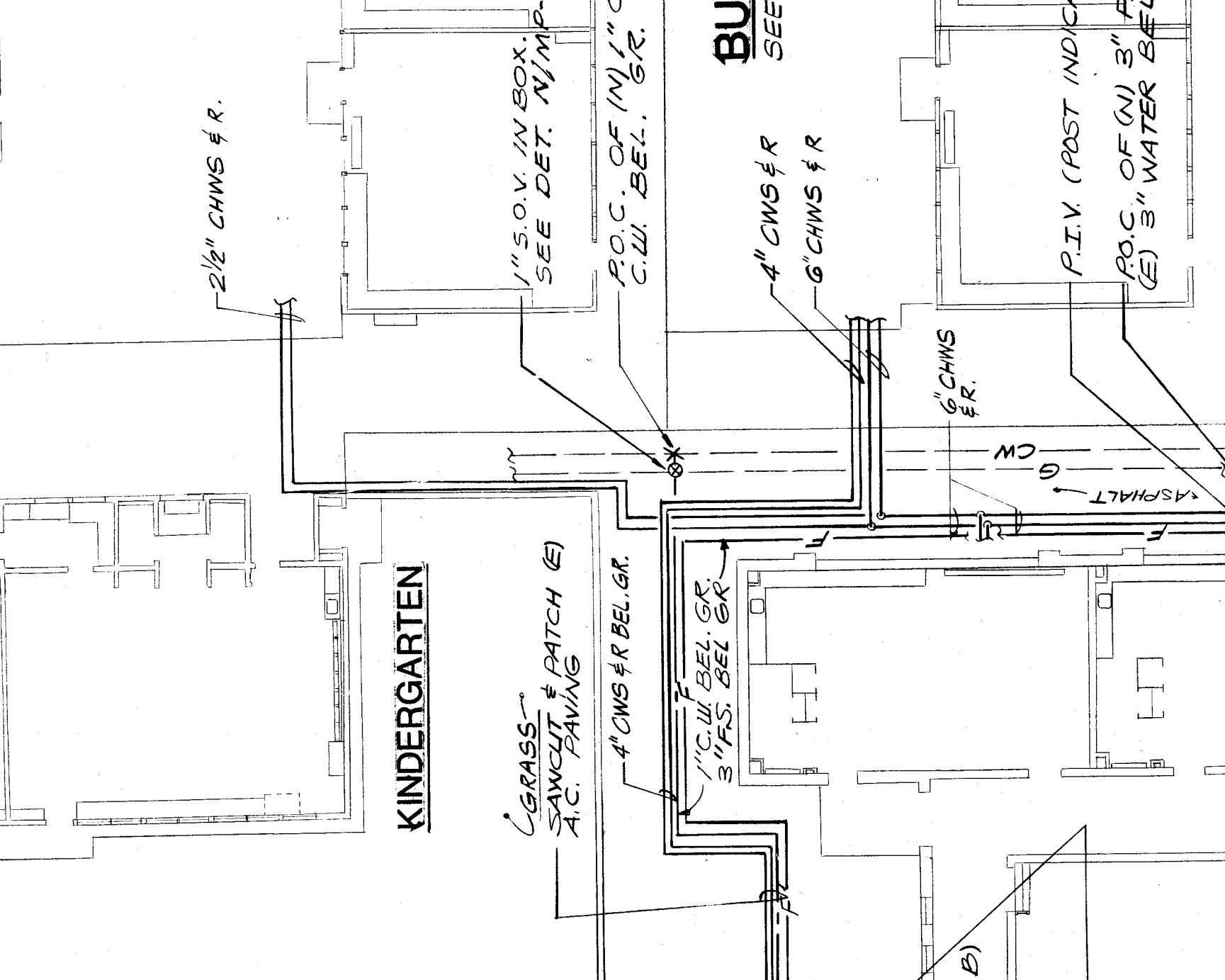
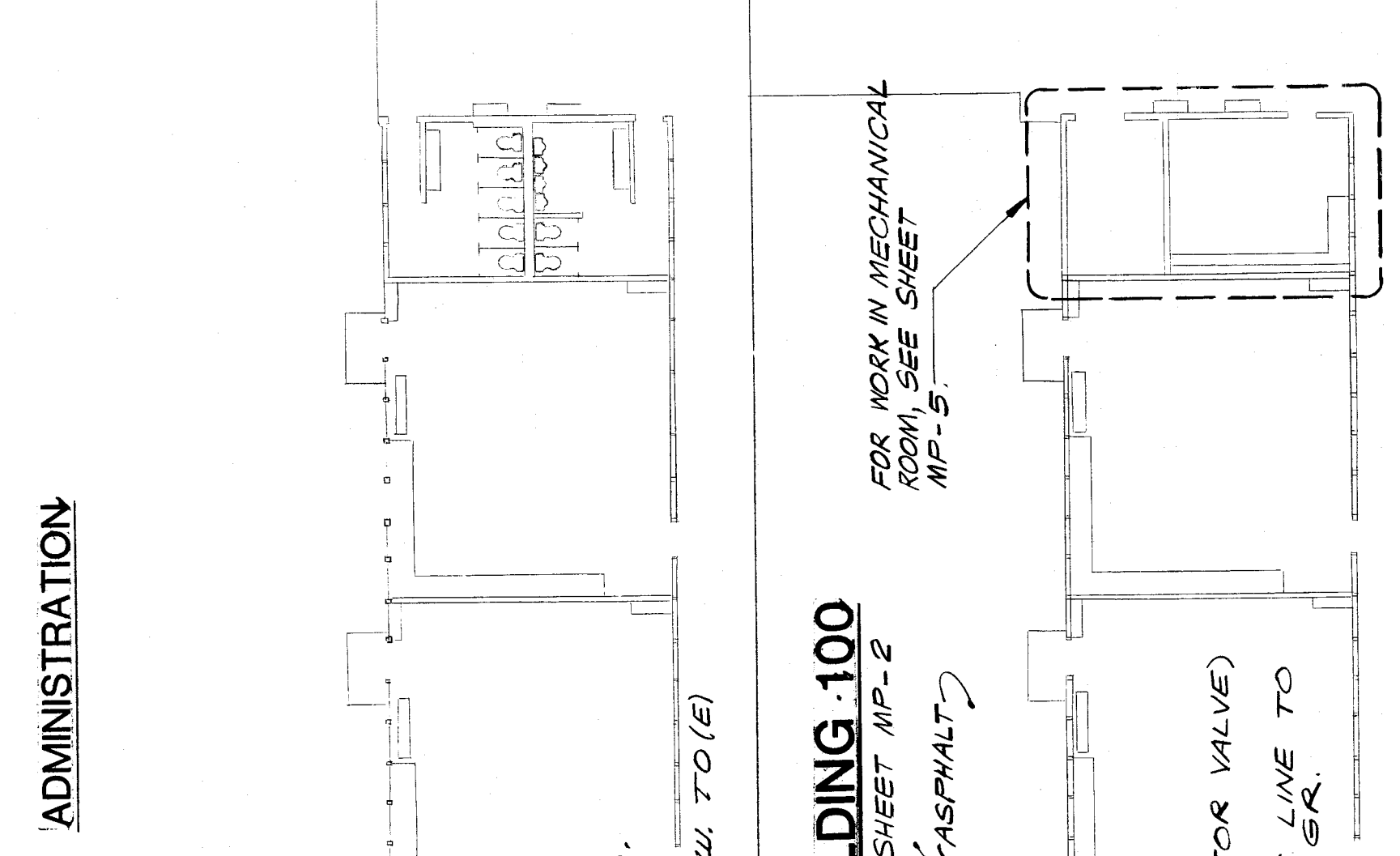
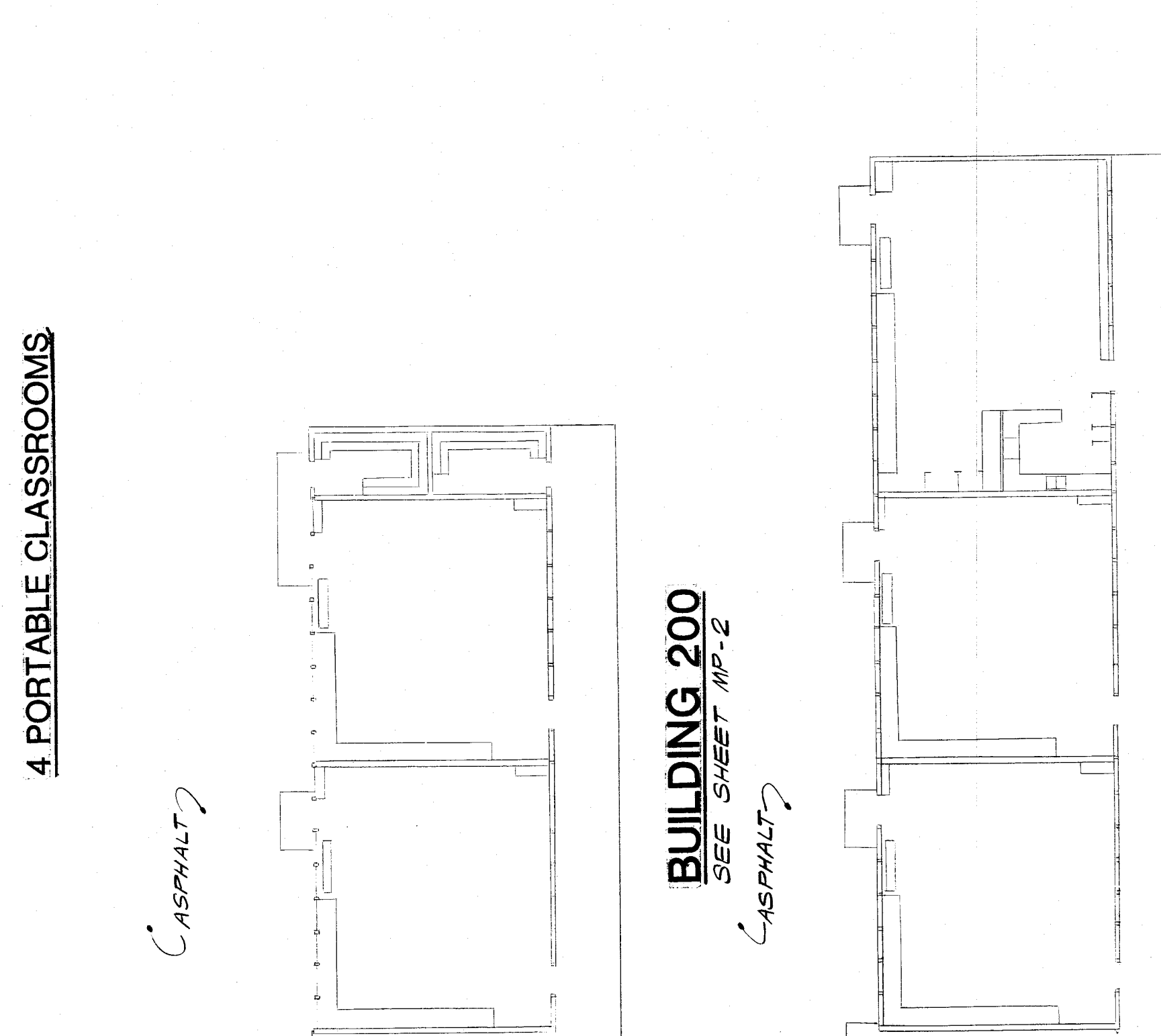
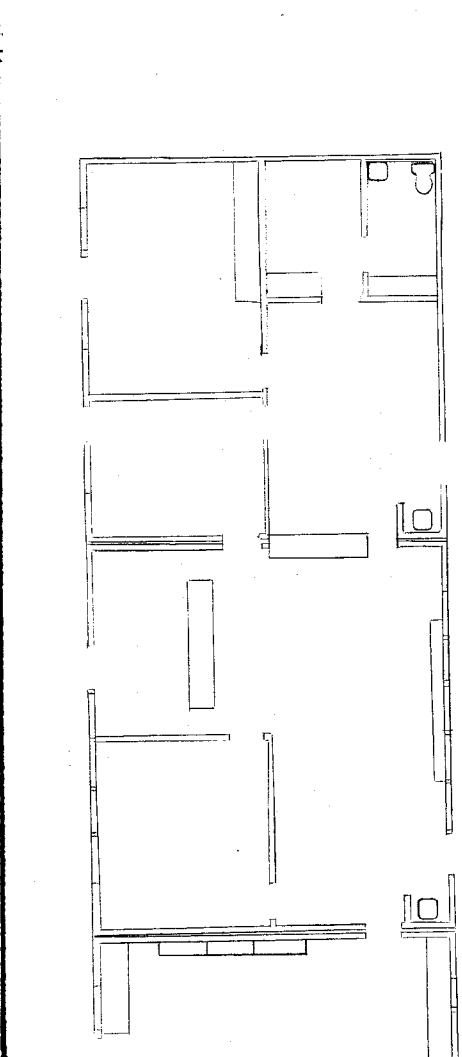
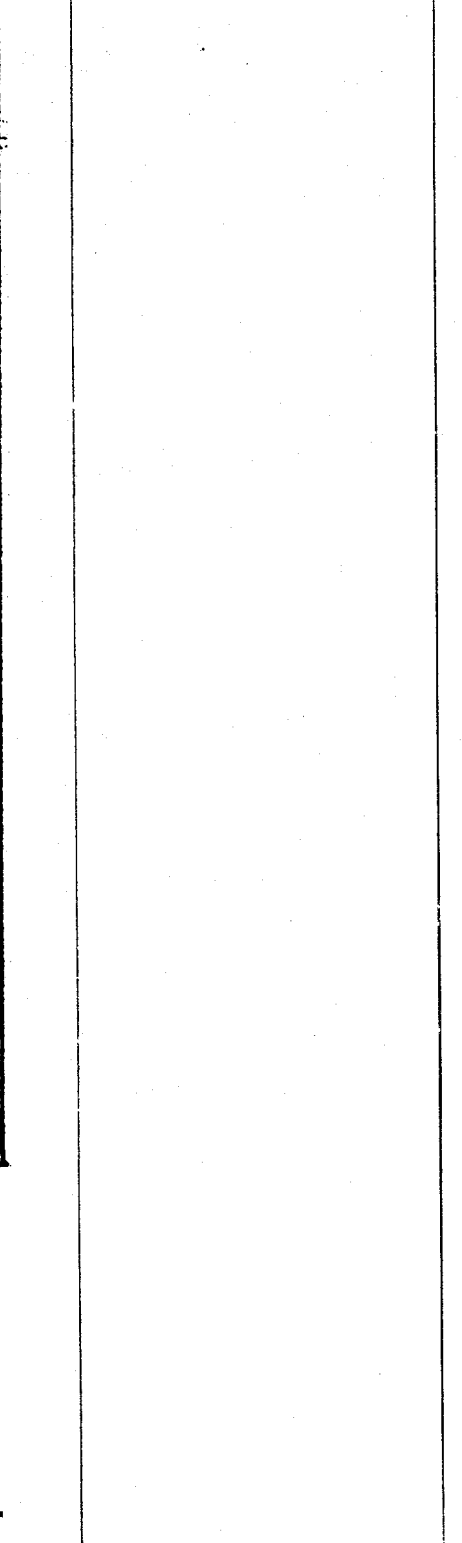
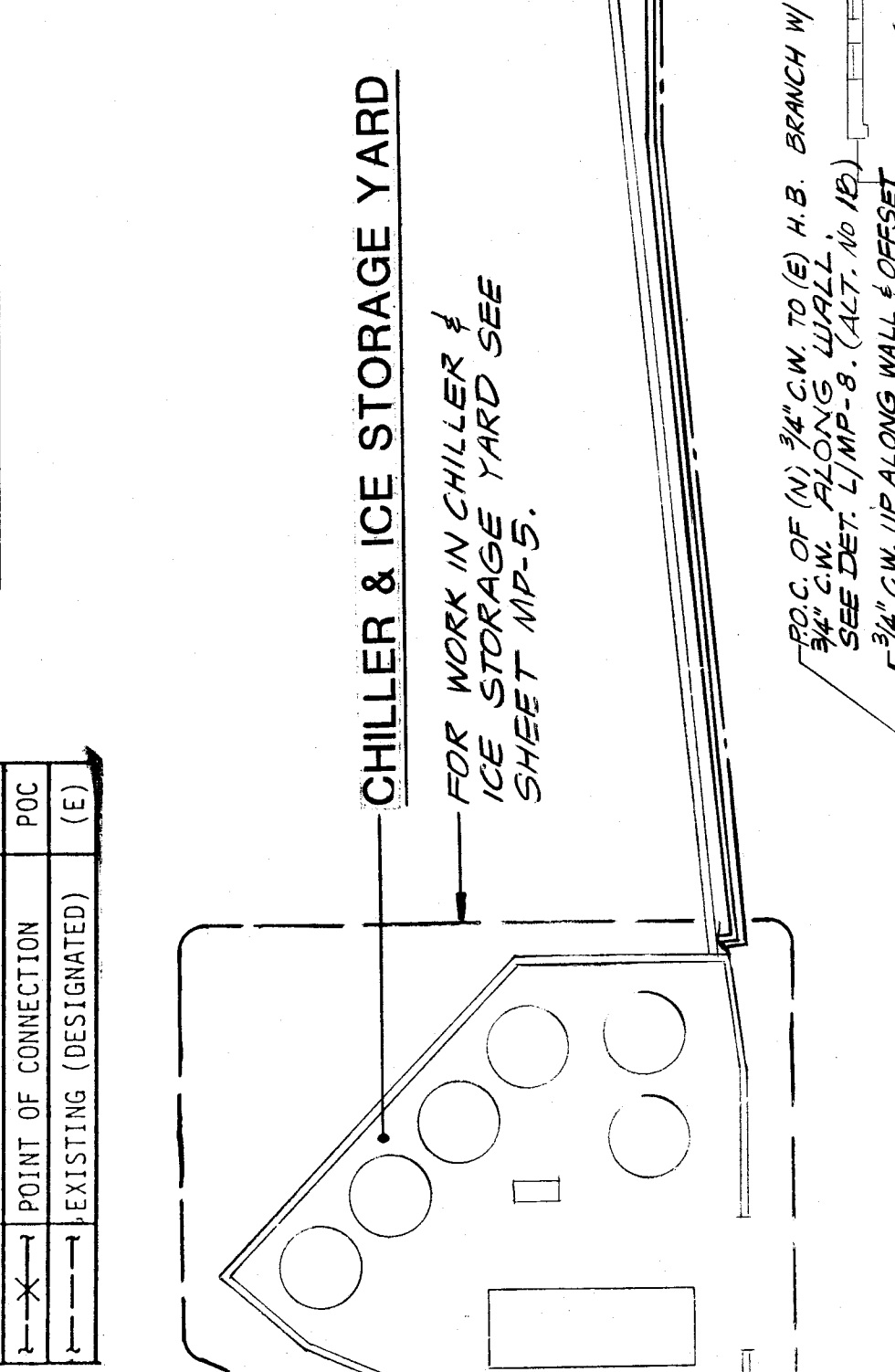
All mechanical and electrical equipment shall be braced and anchored to the structure in the following direction using the following criteria:
 Fixed Equipment on Grade 2/3 of Operating Weight
 Fixed Equipment on Structure 4/28 of Operating Weight
 Emergency Power Equipment on Grade 2/3 of Operating Weight
 Emergency Power Equipment on Structure 5/10 of Operating Weight
 For Flexibly Mounted Equipment Use 2 X the above values.
 Simultaneous Vertical Force - Use 1/3 X Horizontal Force.
 Where anchorage details are not shown on the drawings the field installation shall be subject to the approval of the Engineer. See the field representative of the OFFICE OF THE STATE ARCHITECT.

EQUIPMENT ANCHORAGE
 FOR BUILDING 600

All mechanical and electrical equipment shall be braced and anchored to the structure in the following direction using the following criteria:
 Fixed Equipment on Grade 2/25 of Operating Weight
 Fixed Equipment on Structure 4/28 of Operating Weight
 Emergency Power Equipment on Grade 2/3 of Operating Weight
 Emergency Power Equipment on Structure 5/10 of Operating Weight
 For Flexibly Mounted Equipment Use 2 X the above values.
 Simultaneous Vertical Force - Use 1/3 X Horizontal Force.
 Where anchorage details are not shown on the drawings the field installation shall be subject to the approval of the Engineer. See the field representative of the OFFICE OF THE STATE ARCHITECT.

AIR CONDITIONING LEGEND	
SYMBOL	ITEM
—HWS	HOT WATER SUPPLY
—HWR	HOT WATER RETURN
—CWS	CHILLED WATER SUPPLY
—CWR	CHILLED WATER RETURN
—CHWS	CHILLED/HOT WATER SUPPLY
—CHWR	CHILLED/HOT WATER RETURN
—BS	BRINE SUPPLY
—BR	BRINE RETURN
—S	STEAM SUPPLY
—SR	STEAM RETURN
—RD	REFRIGERANT DISCHARGE
—RL	REFRIGERANT LIQUID
—RS	REFRIGERANT SUCTION
—B	BALL VALVE
—T	BUTTERFLY VALVE
—C	CHECK VALVE
—G	GATE VALVE
—P	PIG VALVE
—U	UNION
—I	INSTRUMENT WELL
—FS	FLOM SWITCH
—S	STRAINER
—R	REDUCER OR INCREASER

AIR CONDITIONING LEGEND	
SYMBOL	ITEM
—R	ROUND DUCT
—S	SHEET METAL DUCT
—L	DUCT WITH ACoustic LINING
—S	SUPPLY AIR DUCT DROP
—R	RETURN AIR DUCT DROP
—S	SUPPLY AIR DUCT RISE
—R	RETURN AIR DUCT RISE
—S	EXHAUST AIR DUCT RISE
—R	EXHAUST AIR DUCT RISE
—E	EXTRACTOR
—V	VOLUME CONTROL DAMPER WITH LOCKING QUADRANT
—FD	FIRE DAMPER WITH LOCKING QUADRANT
—CFM	CUBIC FEET OF AIR PER MINUTE
—T	THERMOSTAT AT +5-0"
—SA	DIRECTION OF FLOW
—RA	SUPPLY AIR
—EA	RETURN AIR
—OSA	EXHAUST AIR
—TYP.	TYPICAL
—COIT.	CONTINUATION
—SOV	SHUT-OFF VALVE IN BOX
—G	GATE VALVE
—BPT	BY PASS TIE
—P	PLUG VALVE
—(E)	EXISTING (DESIGNATED)



- GENERAL PROJECT NOTE - COORDINATION OF WORK:**
- Layout of materials, equipment and systems is generally diagrammatic unless specifically dimensioned. Some work may be shown offset for clarity. The actual locations of all materials, piping, equipment, and installation of any work, to avoid all interferences with each other, or with structural, electrical, architectural or other elements. Verify the proper voltage and phase of all the installation of the Architect and the Engineer prior to the installation of any work or the ordering of any equipment.
- NOTES:**
1. PLUMBING CONTRACTOR TO VERIFY EXACT LOCATION AND DEPTH OF POINTS OF CONNECTION TO EXISTING UTILITIES.
 2. MINIMUM DOMESTIC WATER PIPE SIZE TO BE 3/4" UNLESS NOTED OTHERWISE. USE A REDUCING ELL AT WALL IF NECESSARY.
 3. ALL EXISTING EQUIPMENT REMOVED SHALL BECOME THE PROPERTY OF THE CONTRACTOR AND SHALL BE DELIVERED TO THE DISTRICT'S MAINTENANCE YARD. EQUIPMENT WHICH REMAINS THE DISTRICT'S PROPERTY SHALL BE DELIVERED TO THE DISTRICT'S MAINTENANCE YARD.
 4. REMOVE ALL EXISTING THERMOSTATS AND DO NOT REUSE. INSTALL COVER PLATE UNLESS EXISTING HEATING SYSTEM TO REMAIN OR OTHERWISE NOTED.

