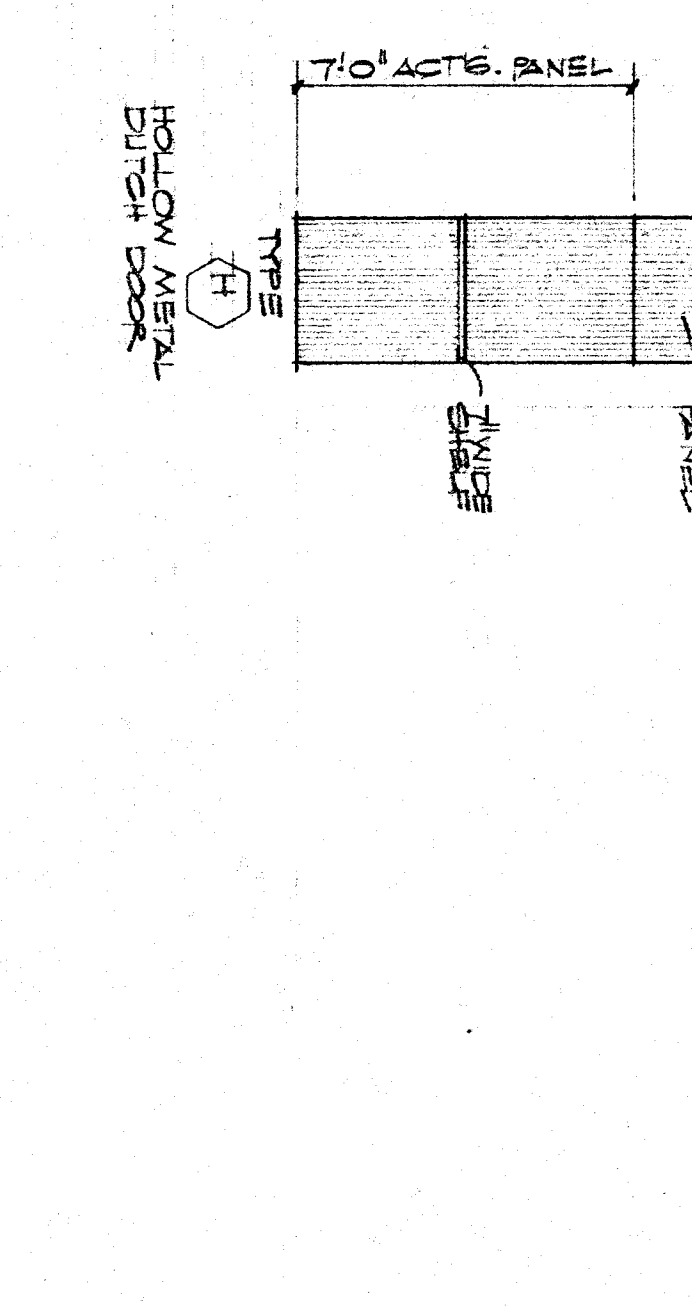
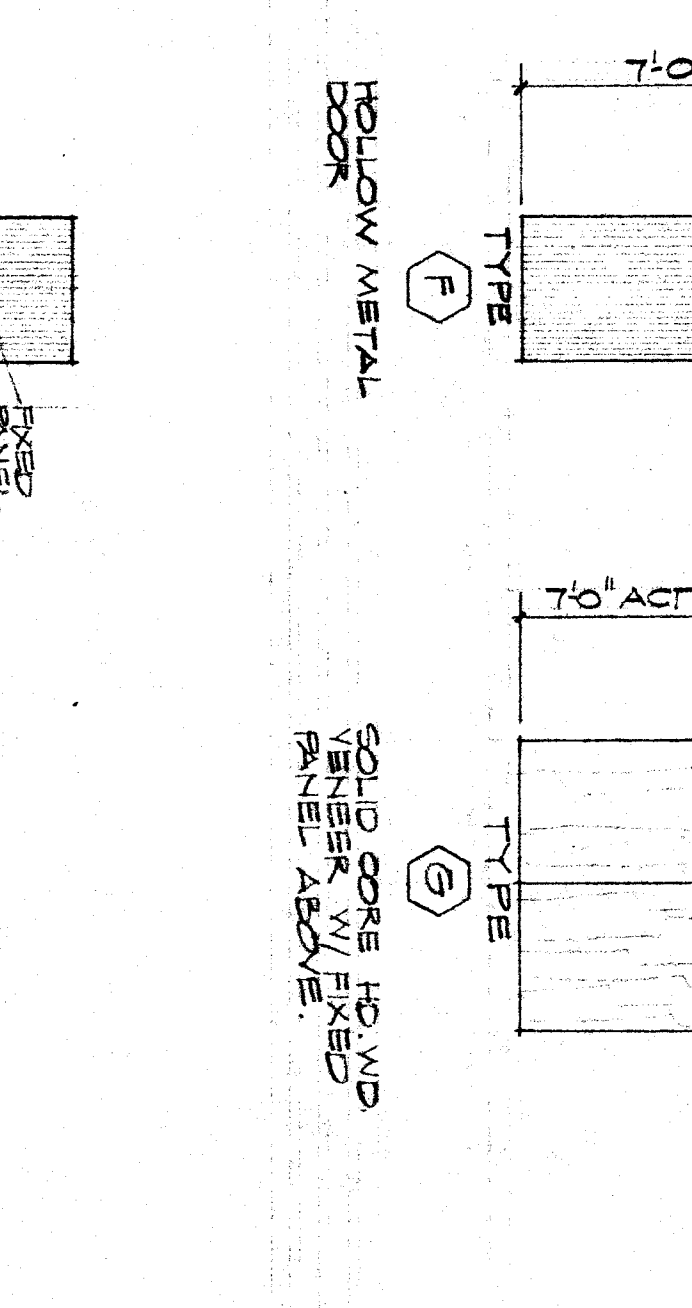
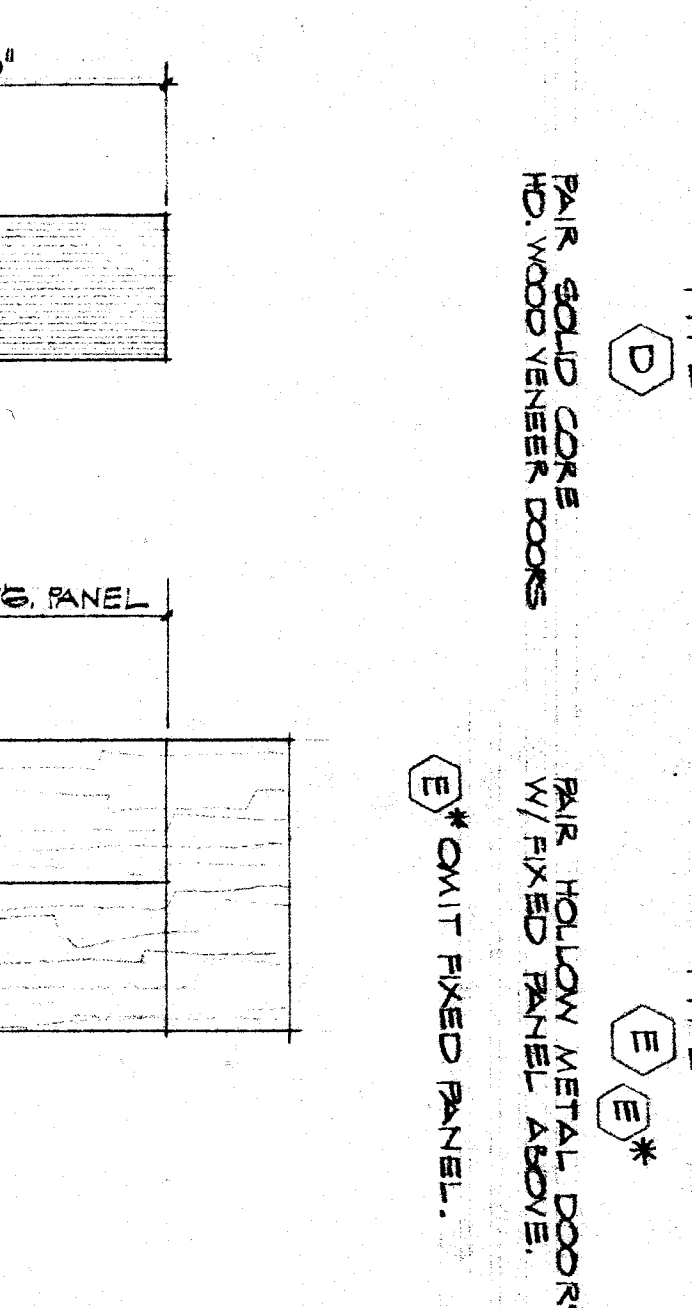
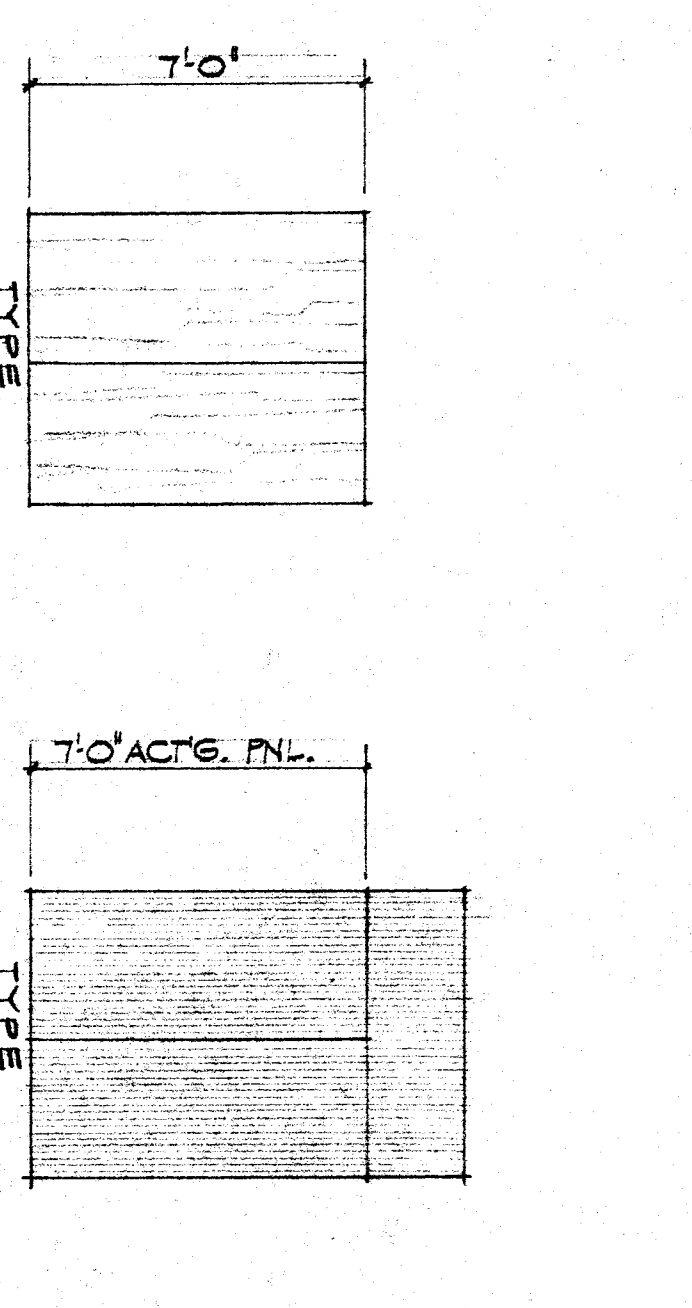
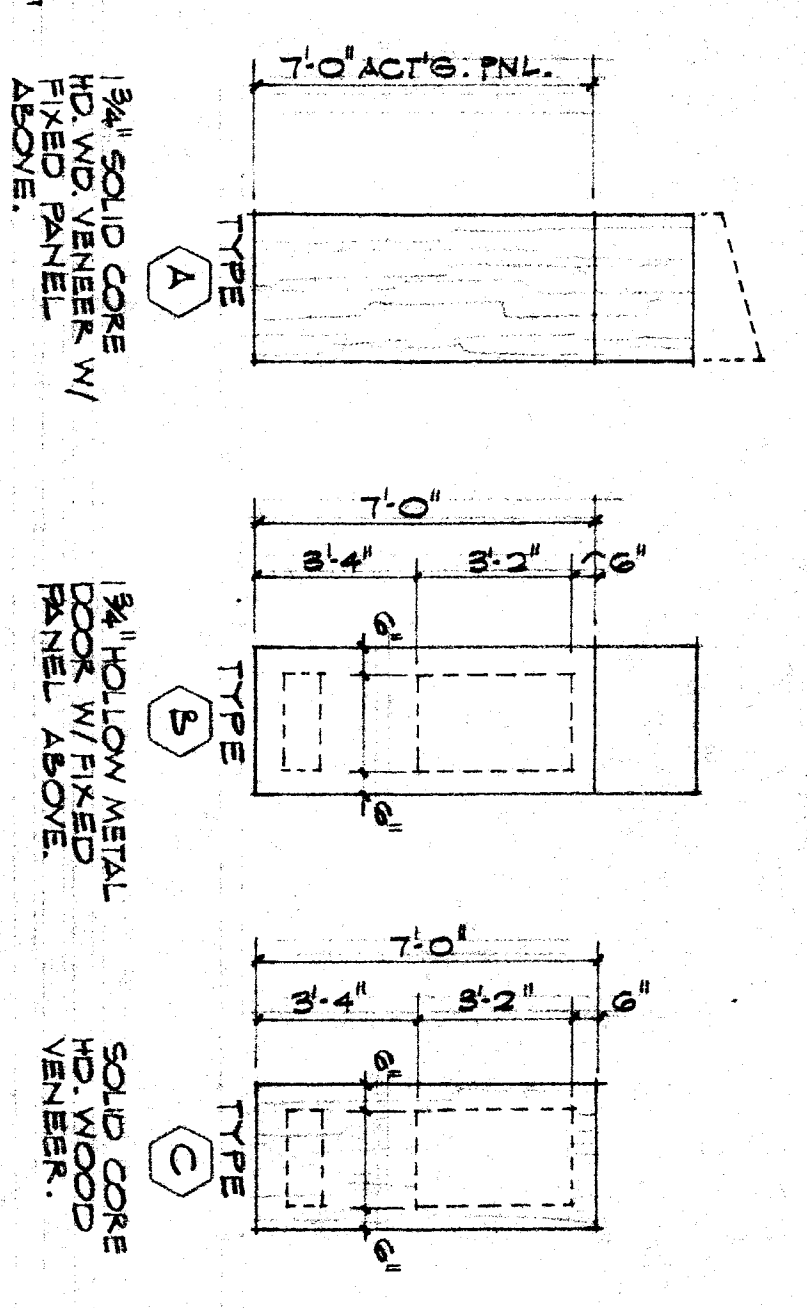


CASEWORK SCHEDULE

BLDG UNIT	MARK	WOODWORK INST. OR QTY. DESIGN NO.	SIZE: # X D.	DESCRIPTION:
ADMINISTRATION	1	531	36" x 64" x 24"	TEACHERS CENTER
	2	402	36" x 64" x 24"	TALL STORAGE CABINET
	3	402	48" x 64" x 24"	TALL STORAGE CABINET
	4	100	36" x 60" x 24"	BASE CABINET
	5	231	36" x 60" x 24"	DRAWER BASE CABINET
	6	102	36" x 60" x 24"	BASE CABINET
	7	102	36" x 60" x 24"	DRAWER BASE CABINET
	8	102	36" x 60" x 24"	BASE CABINET
	9	102	36" x 60" x 24"	DRAWER BASE CABINET
	10	102	48" x 60" x 24"	BASE CABINET
	11	102	48" x 60" x 24"	DRAWER BASE CABINET
	12	102	48" x 60" x 24"	BASE CABINET
	13	102	48" x 60" x 24"	DRAWER BASE CABINET
	14	230	24" x 32" x 24"	FILE BASE CABINET
	15	233	18" x 32" x 24"	FILE BASE CABINET
	16	230	18" x 32" x 24"	FILE BASE CABINET
	17	230	18" x 32" x 24"	FILE BASE CABINET
	18	142	36" x 60" x 24"	BASE CABINET
	19	142	36" x 60" x 24"	DRAWER BASE CABINET
	20	212	48" x 60" x 24"	DRAWER BASE CABINET
	21	102	48" x 60" x 24"	BASE CABINET
	22	230	24" x 32" x 24"	FILE BASE CABINET
	23	233	18" x 32" x 24"	FILE BASE CABINET
	24	230	18" x 32" x 24"	FILE BASE CABINET
BUILDING	1	531	36" x 64" x 24"	TEACHERS CENTER - DOOR LOCKS.
	2	704	48" x 48" x 24"	MOVABLE CUBICLE CART - 12" x 12" CUBICLES - W/ LAM. PLS. TOP
	3	704	48" x 48" x 24"	MOVABLE CUBICLE CART - 12" x 12" CUBICLES - W/ LAM. PLS. TOP
	4	729	18" x 24" x 24"	MOVABLE BLOCK CART
	5	736	18" x 24" x 24"	MOVABLE BLOCK CART - LAM. PLS. TOP
	6	781	48" x 60" x 24"	BASE CABINET
	7	102	36" x 60" x 24"	BASE CABINET
	8	102	36" x 60" x 24"	DRAWER BASE CABINET
	9	102	36" x 60" x 24"	BASE CABINET
	10	230	36" x 60" x 24"	DRAWER BASE CABINET
	11	142	36" x 60" x 24"	BASE CABINET
	12	102	48" x 60" x 24"	DRAWER BASE CABINET
	13	231	36" x 60" x 24"	DRAWER SPIN.
	14	602	48" x 30" x 24"	MASSAGING KNOCK - LTD. ON 02 BASES - 48" x 10" x 24"
	15	302	48" x 30" x 24"	WALL HUNG CABINET
	16	302	48" x 30" x 24"	WALL HUNG CABINET
	17	244	48" x 30" x 24"	TRAY BASE CABINET
	18	745/212	48" x 44" x 15"	BASELINE - LTD. ON 02 BASES - 48" x 44" x 15"
	19	745/212	72" x 44" x 15"	BASELINE - LTD. ON 02 BASES - 72" x 44" x 15"
	20	440	36" x 48" x 12"	WALL HUNG SHELVES.

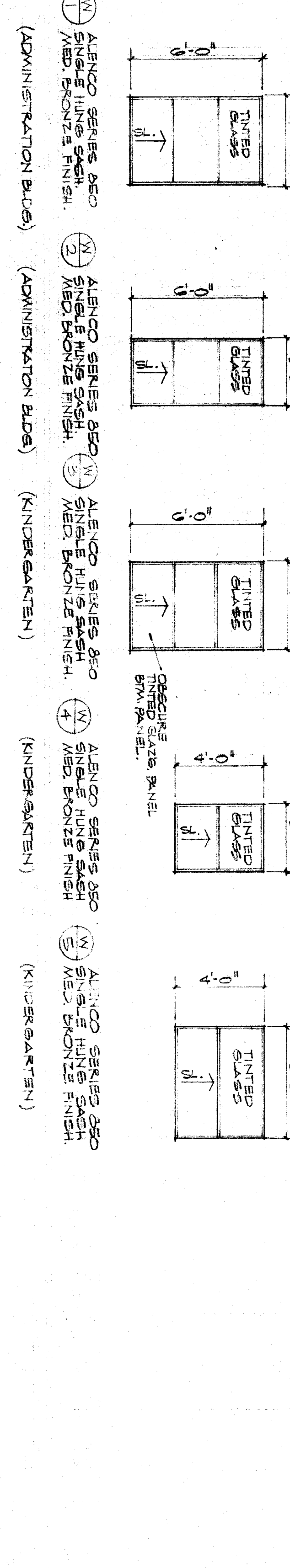
GENERAL NOTES: CASEWORK
 1. CABINET DESIGN NUMBERS REFER TO WOODWORK INSTITUTE OF CALIFORNIA STANDARDS FOR WOODWORK CASEWORK.
 2. ALL CASEWORK IS WOOD-LIKE DESIGN, LAMINATED PLASTIC OVERBAND - DETAILED GRADE.
 3. ALL BASE CABINETS TO HAVE 6" TOE SPACE, UNLESS NOTED OTHERWISE.
 4. TOPS TO BE LAMINATED PLASTIC W/ 1/4" HIGH SPRASH, RETURN & SPONGE BUSH DETAIL GRADE.
 5. ALL CASEWORK CABINETS INCLUDE LAMINATED PLASTIC TOP.
 6. ALL CASEWORK CABINETS TO BE FINISHED WITH A HIGH GLOSS FINISH.
 7. LAMINATED PLASTIC TOPS TO HAVE FINISHED

DOOR TYPES:



DOOR SCHEDULE

DOOR NUMBER	DOOR SIZE	THICK.	MTL.	DOOR TYPE	FRAME	DETAILS	JAMB	LOWERS	HOWARD	REMARKS
1	3'0\"/>									
2	3'0\"/>									
3	3'0\"/>									
4	3'0\"/>									
5	3'0\"/>									
6	3'0\"/>									
7	3'0\"/>									
8	3'0\"/>									
9	3'0\"/>									
10	3'0\"/>									
11	3'0\"/>									
12	3'0\"/>									
13	3'0\"/>									
14	3'0\"/>									
15	3'0\"/>									
16	3'0\"/>									
17	3'0\"/>									
18	3'0\"/>									
19	3'0\"/>									
20	3'0\"/>									
21	3'0\"/>									
22	3'0\"/>									
23	3'0\"/>									
24	3'0\"/>									
25	3'0\"/>									



GENERAL NOTES: WINDOW SCHEDULE
 1. ALL WINDOW DIMENSIONS ARE NOMINAL.
 2. SIZES WITHIN 48\"/>

APPROVED

DATE: 7-8-78
 MARK: OSA
 DATE: 11/17/78
 MARK: CE
 DATE: 09 NO. 77-74
 CHECKED: [Signature]

REVISIONS:

CASEWORK - DOOR & WINDOW SCHEDULES
 ADDITIONS & ALTERATIONS HORACE MANN SCHOOL
 BAKERSFIELD CITY SCHOOL DISTRICT
 BAKERSFIELD, CALIFORNIA

EDDY · PAYNTER · RENFRO & ASSOCIATES
 A.I.A. ARCHITECTS - 5405 STOCKDALE HWY. BAKERSFIELD, CALIFORNIA 93309 - (805) 832-1105