

AURORA

RELOCATABLE CLASSROOM BUILDING

24 x 40

(STOCKPILE)

**ELITE MODULAR
EML #
RELOCATION PACKAGE
FROM STOCKPILE TO SITE SPECIFIC
(X1) 24X40 R.H. DOOR UNIT
SN : 19563-64 FOR HORACE MANN
(X1) 24X40 R.H. DOOR UNIT
SN : 19449-50 FOR HORACE MANN**

D.S.A.

REVISED

IDENTIFICATION STAMP
OFFICE OF BUILDING SERVICES

68839

CHECKED

REVISIONS

1983

1984

1985

1986

1987

1988

1989

1990

1991

1992

1993

1994

1995

1996

1997

1998

1999

2000

2001

2002

2003

2004

2005

2006

2007

2008

2009

2010

2011

2012

2013

2014

2015

2016

2017

2018

2019

2020

2021

2022

2023

2024

2025



AURORA MODULAR INDUSTRIES
16833 Ironwood Ave., Riverside, CA 92504
Phone: (951) 789-7159
Fax: (951) 789-0222

RELOCATABLE BUILDING FOR
WILLIAM S. COTEMAN GROUP



COVER SHEET,
SHEET INDEX,
BUILDING DATA

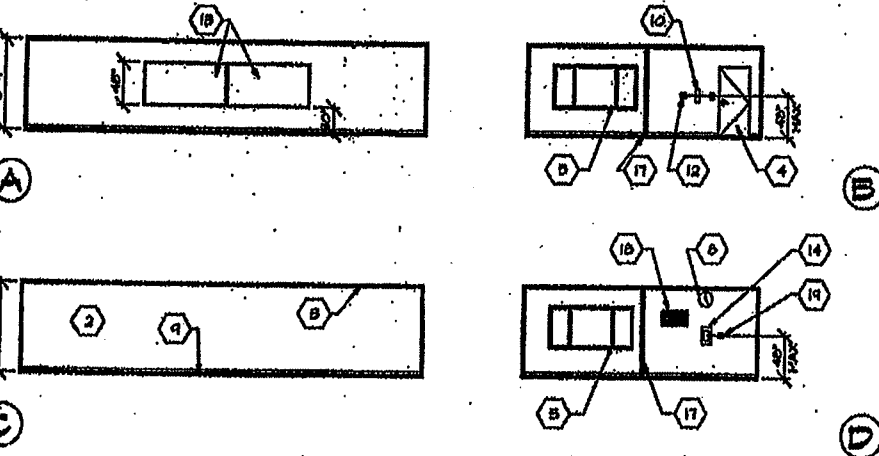
SHEET
0

FIRE ALARM NOTES	BLDG. DATA (50 LBS STANDARD)	INDEX	INDEX FOR ALTERNATE RESTROOM FLOOR PLAN
<p>NFPA 13- Automatic Sprinkler Systems, 1994 Edition</p> <p>NFPA 4- Standpipe Systems, 1998 Edition</p> <p>NFPA 71A- Wet Chemical Systems, 1990 Edition</p> <p>NFPA 24- Private Fire Mats, 1992 Edition</p> <p>(California Amended) NFPA 72- National Fire Alarm Codes, 1993 Edition</p> <p>NFPA 253- Critical Radiant Flux of Floor Covering Systems, 1984 Edition</p> <p>NFPA 2001- Clean Agent Fire Extinguishing Systems, 1994 Edition</p>	<p>OCCUPANCY: E-3</p> <p>TYPE OF CONSTRUCTION: V - NON RATED</p> <p>WIND LOAD: 10 m.p.h. EXPOSURE 'C'</p> <p>FLOOR LIVE LOAD: 50 lbs/sq. ft.</p> <p>ROOF LIVE LOAD: 20 lbs/sq. ft.</p> <p>BUILDING DATA: 960 sq. ft.</p> <p>SYSTEM: RIGID FRAME</p> <p>MODULES: TWO 12' x 40'</p> <p>FOUNDATION: HOOD</p> <p>FOUNDATION: CONCRETE</p> <p>FOUNDATION: FLUSH W/ GRADE CONCRETE</p>	<p>0 COVER SHEET - SHEET INDEX - BLDG DATA</p> <p>1 FLOOR PLAN - ROOF PLAN - BLDG ELEVATIONS</p> <p>2 FOUNDATION PLAN AND DETAILS (WOOD 50 LB. L.F.L., 20 LBS. PARTITIONS)</p> <p>3 FOUNDATION PLAN AND DETAILS (WOOD 100 LB. LIVE LOAD)</p> <p>4 FOUNDATION PLAN AND DETAILS (WOOD 125 LB. LIVE LOAD)</p> <p>5 FOUNDATION PLAN AND DETAILS (CONC. 50 LB. L.F.L., 20 LBS. PARTITIONS, ABOVE GRADE)</p> <p>6 FOUNDATION PLAN AND DETAILS (CONC. 100 LB. LIVE LOAD)</p> <p>7 FOUNDATION PLAN AND DETAILS (CONC. 125 LB. LIVE LOAD)</p> <p>8 FOUNDATION PLAN AND DETAILS (CONC. 50 LB. L.F.L., 20 LBS. PARTITIONS, FLUSH WITH GRADE)</p> <p>9 FOUNDATION PLAN AND DETAILS (CONC. 100 LB. LIVE LOAD)</p> <p>10 FOUNDATION PLAN AND DETAILS (CONC. 125 LB. LIVE LOAD)</p> <p>11 FOUNDATION PLAN AND DETAILS (CONC. 50 LB. L.F.L., 20 LBS. PARTITIONS, FLUSH WITH GRADE)</p> <p>12 FOUNDATION PLAN AND DETAILS (CONC. 100 LB. LIVE LOAD)</p> <p>13 FOUNDATION PLAN AND DETAILS (CONC. 125 LB. LIVE LOAD)</p> <p>14 RAMP SECTION AND WALL FRAMING</p> <p>15 TYPICAL DETAILS</p> <p>16 FLOOR FRAMING - ROOF FRAMING & STRUCTURAL DETAILS</p> <p>17 STEEL TRUSS SECTION & DETAILS</p> <p>18 STRUCTURAL DETAILS (MULTI-LEVEL ROOFING)</p> <p>19 STRUCTURAL DETAILS (E.G.G. ROOFING)</p> <p>20 CORNER DETAIL (20-51 RUCKING)</p> <p>21 REFLECTED CEILING PLAN & DETAILS</p> <p>22 ELECTRICAL POWER & LIGHTING PLAN & POWER SCHEDULE</p> <p>23 SCHEDULES (WINDOWS, DOORS, EXTERIOR, FINISH SCHEDULES)</p> <p>24 RAMP PLAN AND DETAILS (METAL DECK)</p> <p>25 AIR CONDITIONING PLAN</p> <p>FOUNDATION PLAN - SEE PC 04-11689E</p>	<p>1. FLOOR, ROOF PLAN, BLDG. ELEVATIONS (RESTROOM FLOOR PLAN)</p> <p>7. REFLECTED CEILING PLAN & DETAILS (RESTROOM FLOOR PLAN)</p> <p>2. ELEC. & LIGHTING PLAN (RESTROOM FLOOR PLAN)</p> <p>NOTE: THESE SHEETS ARE TO BE USED IF THIS MODEL IS FOR A RESTROOM. ALL OTHER SHEETS WILL APPLY.</p>
<p>APPLICABLE CODES</p>	<p>OCCUPANCY: E-1</p> <p>TYPE OF CONSTRUCTION: V - NON RATED</p> <p>WIND LOAD: 10 m.p.h. EXPOSURE 'C'</p> <p>FLOOR LIVE LOAD: 50 lbs/sq. ft.</p> <p>ROOF LIVE LOAD: 20 lbs/sq. ft.</p> <p>BUILDING DATA: 960 sq. ft.</p> <p>SYSTEM: RIGID FRAME</p> <p>MODULES: TWO 12' x 40'</p> <p>FOUNDATION: HOOD</p> <p>FOUNDATION: CONCRETE</p> <p>FOUNDATION: FLUSH W/ GRADE CONCRETE</p>	<p>2 FOUNDATION PLAN AND DETAILS (WOOD 50 LB. L.F.L., 20 LBS. PARTITIONS)</p> <p>3 FOUNDATION PLAN AND DETAILS (WOOD 100 LB. LIVE LOAD)</p> <p>4 FOUNDATION PLAN AND DETAILS (WOOD 125 LB. LIVE LOAD)</p> <p>5 FOUNDATION PLAN AND DETAILS (CONC. 50 LB. L.F.L., 20 LBS. PARTITIONS, ABOVE GRADE)</p> <p>6 FOUNDATION PLAN AND DETAILS (CONC. 100 LB. LIVE LOAD)</p> <p>7 FOUNDATION PLAN AND DETAILS (CONC. 125 LB. LIVE LOAD)</p> <p>8 FOUNDATION PLAN AND DETAILS (CONC. 50 LB. L.F.L., 20 LBS. PARTITIONS, FLUSH WITH GRADE)</p> <p>9 FOUNDATION PLAN AND DETAILS (CONC. 100 LB. LIVE LOAD)</p> <p>10 FOUNDATION PLAN AND DETAILS (CONC. 125 LB. LIVE LOAD)</p> <p>11 FOUNDATION PLAN AND DETAILS (CONC. 50 LB. L.F.L., 20 LBS. PARTITIONS, FLUSH WITH GRADE)</p> <p>12 FOUNDATION PLAN AND DETAILS (CONC. 100 LB. LIVE LOAD)</p> <p>13 FOUNDATION PLAN AND DETAILS (CONC. 125 LB. LIVE LOAD)</p>	
	<p>BLDG. DATA (100 PSF OPTION)</p>		
	<p>OCCUPANCY: E-1</p> <p>TYPE OF CONSTRUCTION: V - NON RATED</p> <p>WIND LOAD: 10 m.p.h. EXPOSURE 'C'</p> <p>FLOOR LIVE LOAD: 100 lbs/sq. ft.</p> <p>ROOF LIVE LOAD: 20 lbs/sq. ft.</p> <p>BUILDING DATA: 960 sq. ft.</p> <p>SYSTEM: RIGID FRAME</p> <p>MODULES: TWO 12' x 40'</p> <p>FOUNDATION: HOOD</p> <p>FOUNDATION: CONCRETE</p> <p>FOUNDATION: FLUSH W/ GRADE CONCRETE</p>		
	<p>BLDG. DATA (125 PSF OPTION)</p>		
	<p>OCCUPANCY: E-1</p> <p>TYPE OF CONSTRUCTION: V - NON RATED</p> <p>WIND LOAD: 10 m.p.h. EXPOSURE 'C'</p> <p>FLOOR LIVE LOAD: 125 lbs/sq. ft.</p> <p>ROOF LIVE LOAD: 20 lbs/sq. ft.</p> <p>BUILDING DATA: 960 sq. ft.</p> <p>SYSTEM: RIGID FRAME</p> <p>MODULES: TWO 12' x 40'</p> <p>FOUNDATION: HOOD</p> <p>FOUNDATION: CONCRETE</p> <p>FOUNDATION: FLUSH W/ GRADE CONCRETE</p>		

1983 1984 1985 1986 1987 1988 1989 1990 1991 1992 1993 1994 1995 1996 1997 1998 1999 2000 2001 2002 2003 2004 2005 2006 2007 2008 2009 2010 2011 2012 2013 2014 2015 2016 2017 2018 2019 2020 2021 2022 2023 2024 2025

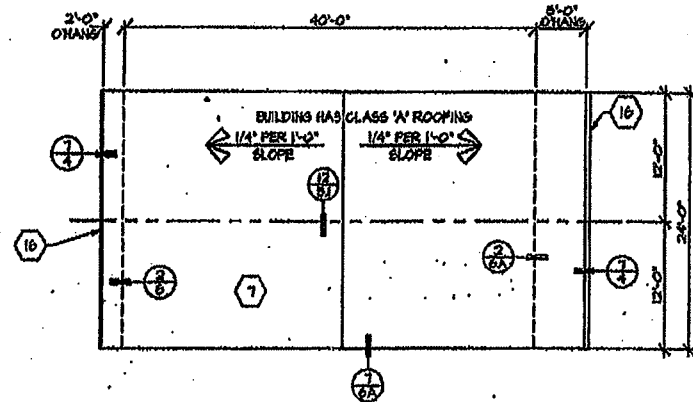
EXTERIOR ELEVATIONS - (OPPOSITE HAND) (R.H. DOOR)

SCALE: 1/8" = 1'-0"



INTERIOR ELEVATIONS - (OPPOSITE HAND) (R.H. DOOR)

SCALE: 1/8" = 1'-0"

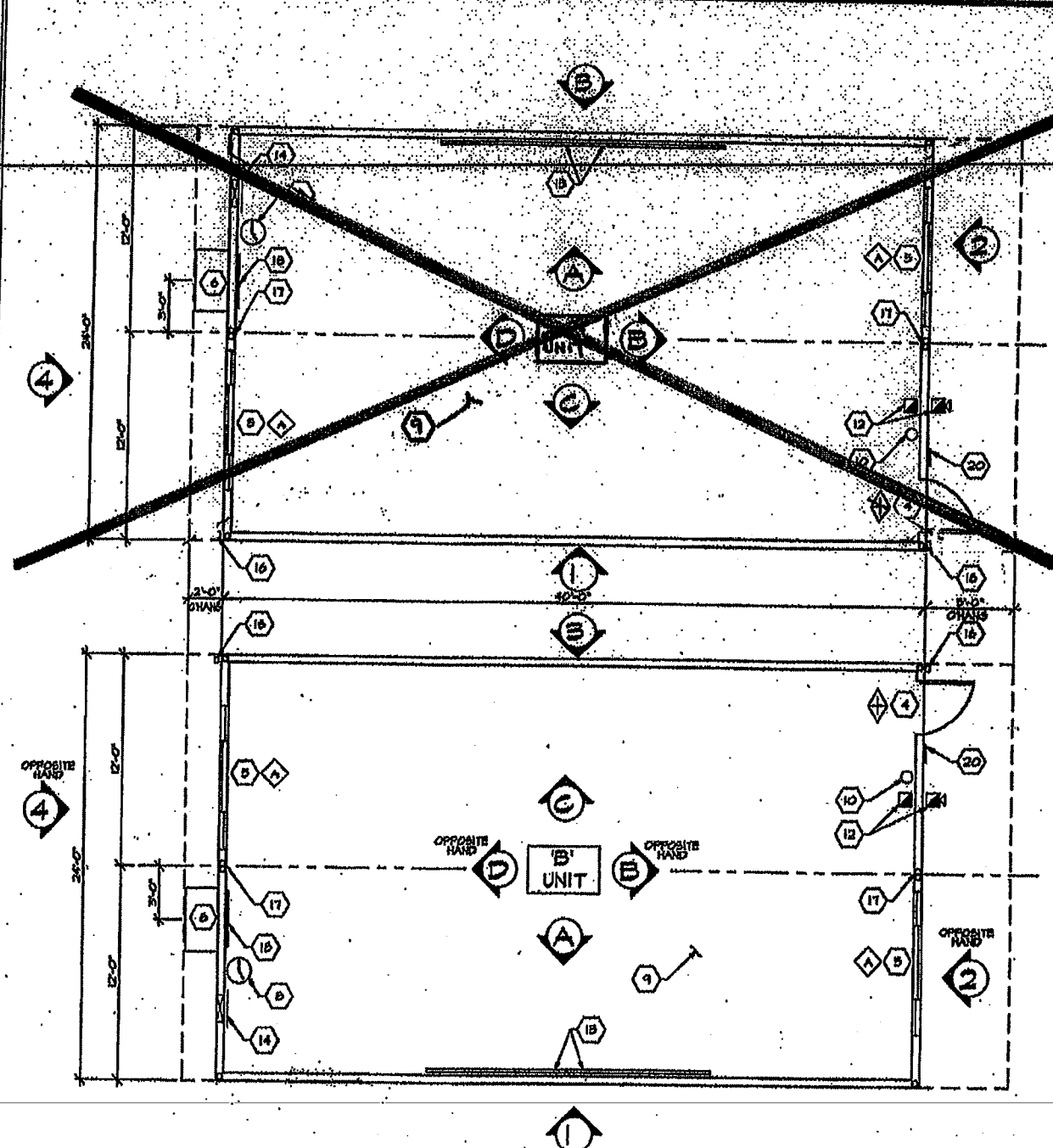


ROOF PLAN

SCALE: 1/8" = 1'-0"

FLOOR PLANS

SCALE: 1/4" = 1'-0"



- KEYNOTES**
- 1 TYPICAL EXTERIOR FINISH - SEE SHEET 4
 - 2 TYPICAL INTERIOR FINISH - SEE SHEET 4
 - 3 TYPICAL CEILING MATERIAL - SEE SHEET 4
 - 4 EXTERIOR DOOR - SEE SHEET 4
 - 5 ALUMINUM SLIDER WINDOW - SEE SHEET 4
 - 6 WALL MOUNTED ELECTRIC HEAT FINISH - SEE SHEET 4
 - 7 ROOFING - SEE SHEETS 3 & 4
 - 8 FLOOR FLOORING - SEE SHEET 4
 - 9 FINISH FLOORING - SEE SHEET 4
 - 10 FIRE RESISTANT 5/8" DRY GYPSUM BOARD WITH 1/2" U.S. RATING, MEETING DETAIL 2-40' A.P.P.
 - 11 INSULATION: FIBERGLASS BATT, R-11 IN FLOOR, R-19 IN WALLS, AND R-30 IN CEILING. FLOOR ABOVE SHALL BE DEVELOPED, FIVE CONTINUED - 0-100.
 - 12 FIRE ALARM: CALL STATION LOCATED 4'-0" ON THE INTERIOR WALL OR BELL LOCATED AT 4'-0" ON THE EXTERIOR WALL TO BE SHIPPED INTO ATTIC SPACE ONLY.
 - 13 CHALKBOARD - SEE SHEET 4
 - 14 ELECTRICAL PANEL - SEE SHEET 4
 - 15 METAL TAG ON ALL MODULES MECHANICALLY ATTACHED TO EXTERIOR OR PLUMB FRAME AT 8'-0" A.P.P. SIKING PER APPROVAL. MANUFACTURER'S HANGING FLOOR LOAD AND UNIT SERIAL NUMBER.
 - 16 25 GA. GUTTER AND DOWNSPOUT.
 - 17 VINYL WRAPPED GLOBE-OFF BATT.
 - 18 HVAC RETURN.
 - 19 THERMOSTAT, SEE SHEET 4
 - 20 ACCESS SIGN (SEE DETAIL 15 SHEET 4)

- KEYNOTES
- ◇ TYPE DOOR HARDWARE
- ◇ WINDOW TYPE
- DETAIL # SHEET #

D.S.A. REVISED

CHECKED

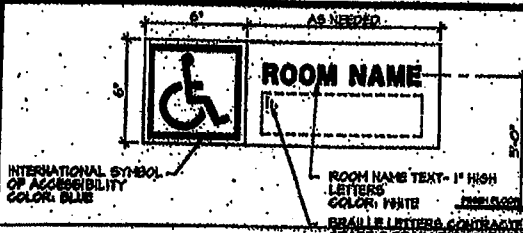
REVISIONS

WILLIAMS/SCOTSMAN GROUP

TURORA MODULAR INDUSTRIES

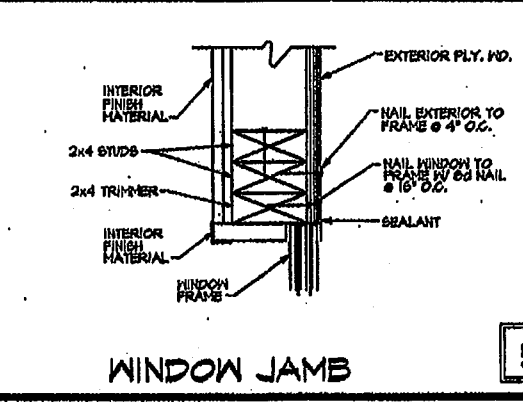
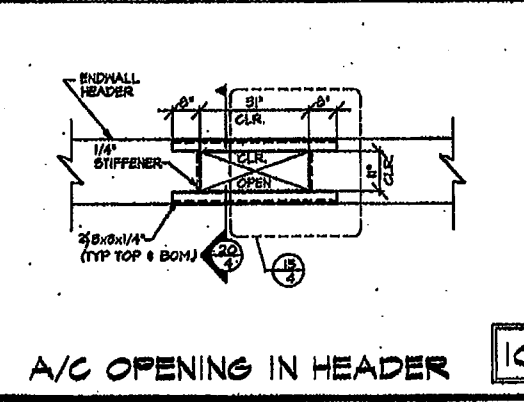
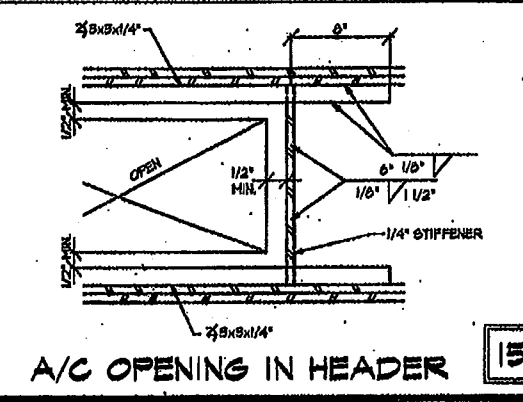
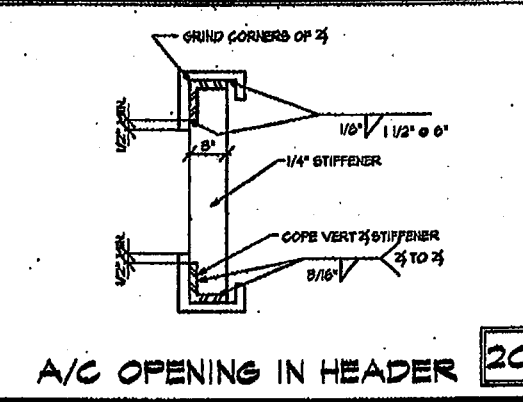
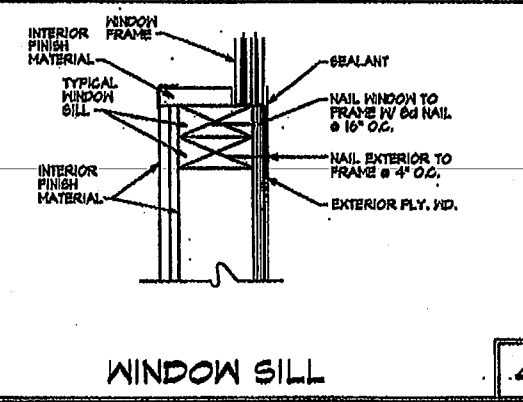
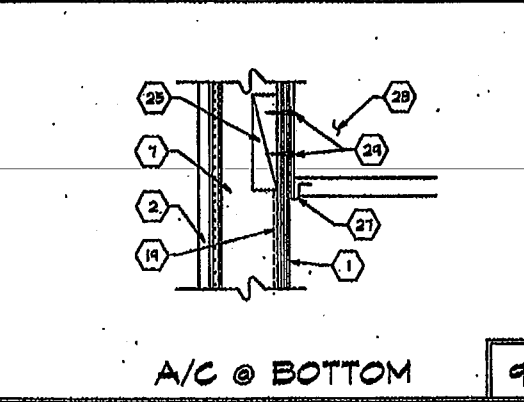
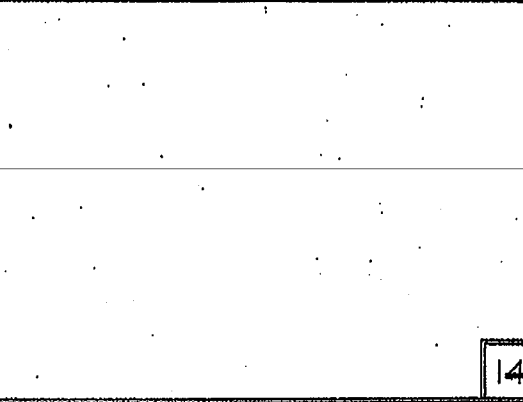
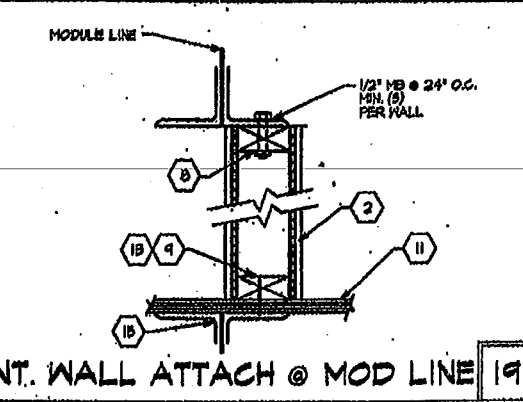
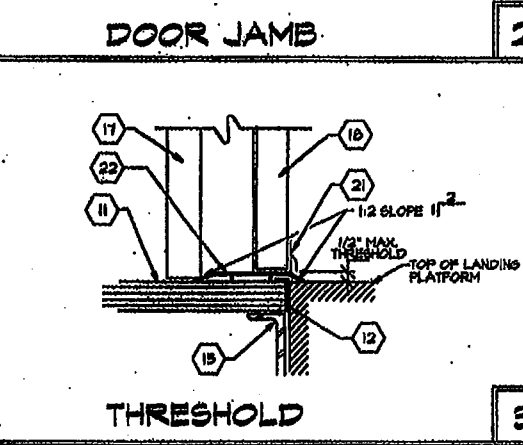
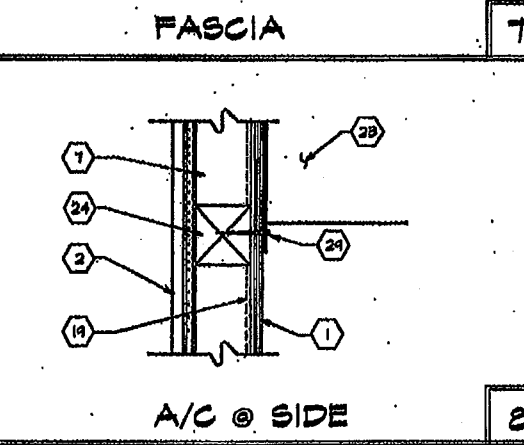
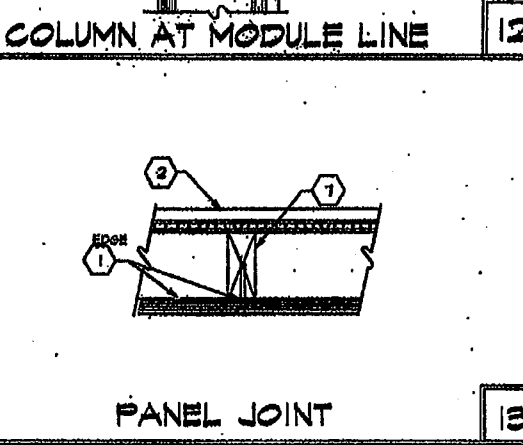
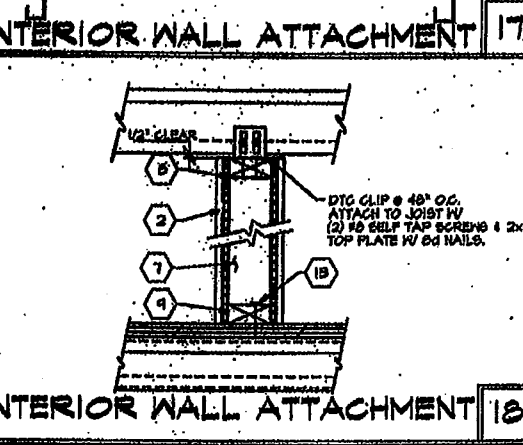
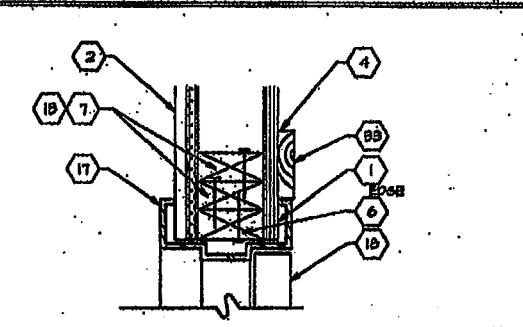
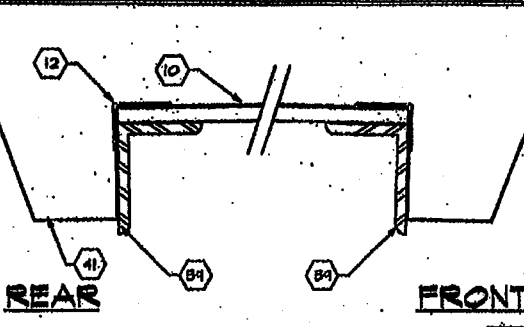
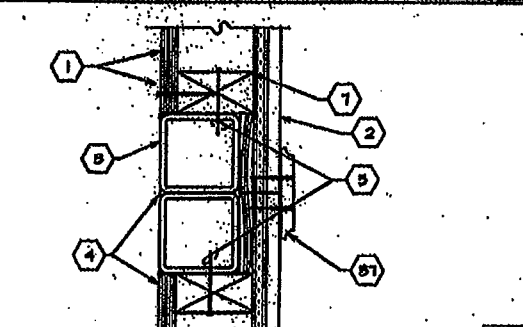
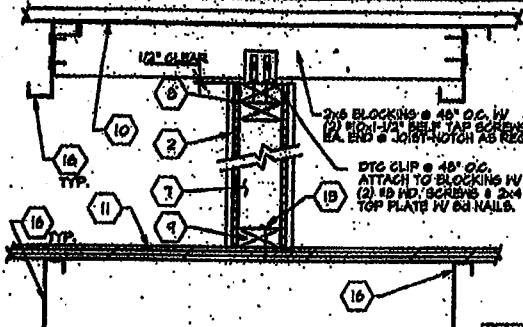
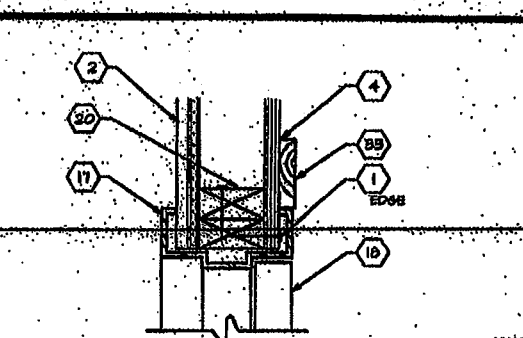
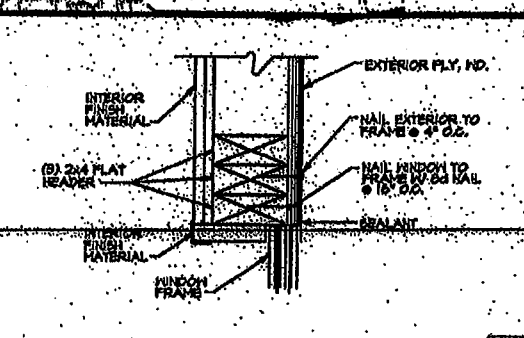
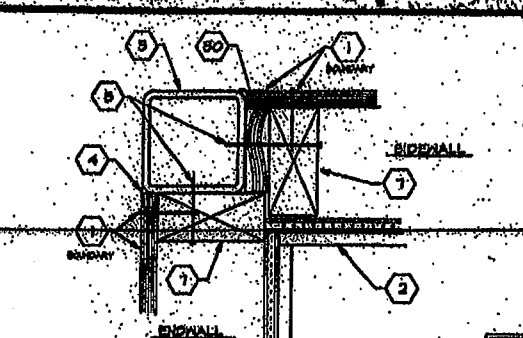
**FLOOR PLAN
ROOF PLAN
BUILDING ELEVATIONS**

3167



HANDICAP ROOM SIGN 16

TO BE BLUE BACKGROUND W/ WHITE LETTERS



- KEYNOTES**
- EXTERIOR FINISH MATERIAL - NAIL W/ CORROSION RESISTANT 6D NAIL @ 4" O.C. BOUNDARY, EDGES AND 12" O.C. FIELD. WITH MOISTURE BARRIER PER SHEET 9 FOR MATERIAL.
 - TYPICAL INTERIOR FINISH - SEE SHEET 1 FOR MATERIAL.
 - STEEL TIE COLUMN - SEE SHEET 5.
 - SEALANT
 - MULTI DENSITY POLYURETHANE FOAM OR RAMMETS: 12x6 @ 24" O.C.
 - 2x4 TRIMMER
 - 2x4 FULL HEIGHT STUDS
 - 2x4 TOP PLATE
 - 2x4 BOTTOM PLATE
 - ROOF BREATHING - SEE SHEET 5.
 - FLOOR BREATHING - SEE SHEET 5.
 - GALVANIZED METAL FLASHING
 - 1x2 BOX NAILS @ 16" O.C.
 - NOT USED.
 - STEEL FLOOR CHANNEL - SEE SHEET 5.
 - STEEL JOIST - SEE SHEET 5.
 - HOLLOW METAL DOOR FRAME
 - METAL DOOR
 - NOT USED
 - HEADER - (2) 2x4 #1 PLAT
 - DOOR BOTTOM WITH WEATHER STRIP
 - ALUMINUM THRESHOLD
 - MALL MOUNTED A/C
 - 4x4 P.F. # 2 # BETTER POST
 - 2x6 BLOCK BETWEEN STUDS. ATTACH TO STUDS W/ (2) 1x2 BOX NAILS EACH END OF BLOCKS INTO STUD.
 - NOT USED.
 - 11 @ 24" LONG STEEL BOTTOM BRACKET
 - NOT USED.
 - 3/8" DIA. x 2-1/2" LAG BOLTS ONLY AS INDICATED BY PRE DRILLED HOLES ON UNIT.
 - 5/4" x SPACER
 - NOT USED
 - NOT USED
 - 1x4 TRIM
 - NOT USED
 - NOT USED
 - NOT USED
 - VINYL WRAPPED CLOSE OFF BATT. ATTACH W/ 1x2 2-1/4" FAN HEAD WOOD SCREWS STAGGERED 24" O.C. (2) SCREWS TOP AND BOTTOM.
 - NOT USED
 - 4 4" x 5" x 5/8" @ PERIM. OF OVERHANGS.
 - NOT USED
 - 26 GA GUTTER - SEE ROOF PLAN FOR LOCATION

D.S.A. REVISED

CHECKED

REVISIONS

WILLIAMS/SCOTSMAN GROUP

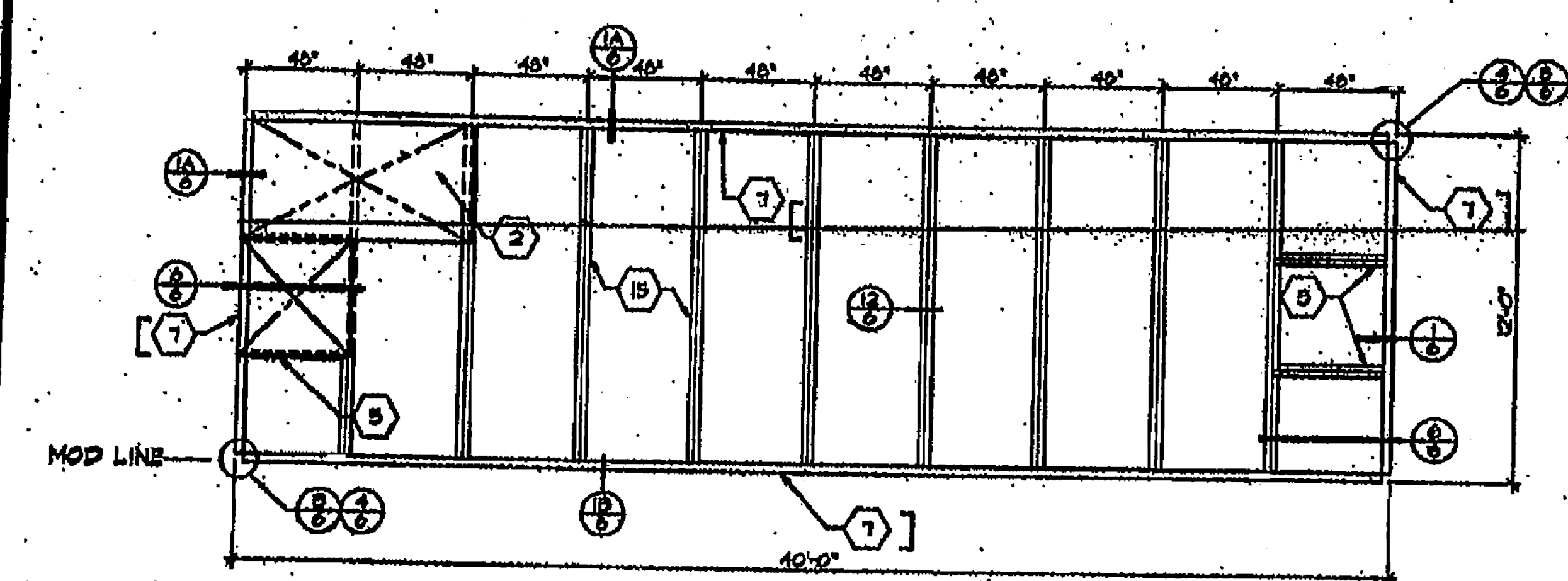
TYPICAL DETAILS

SHEET 4

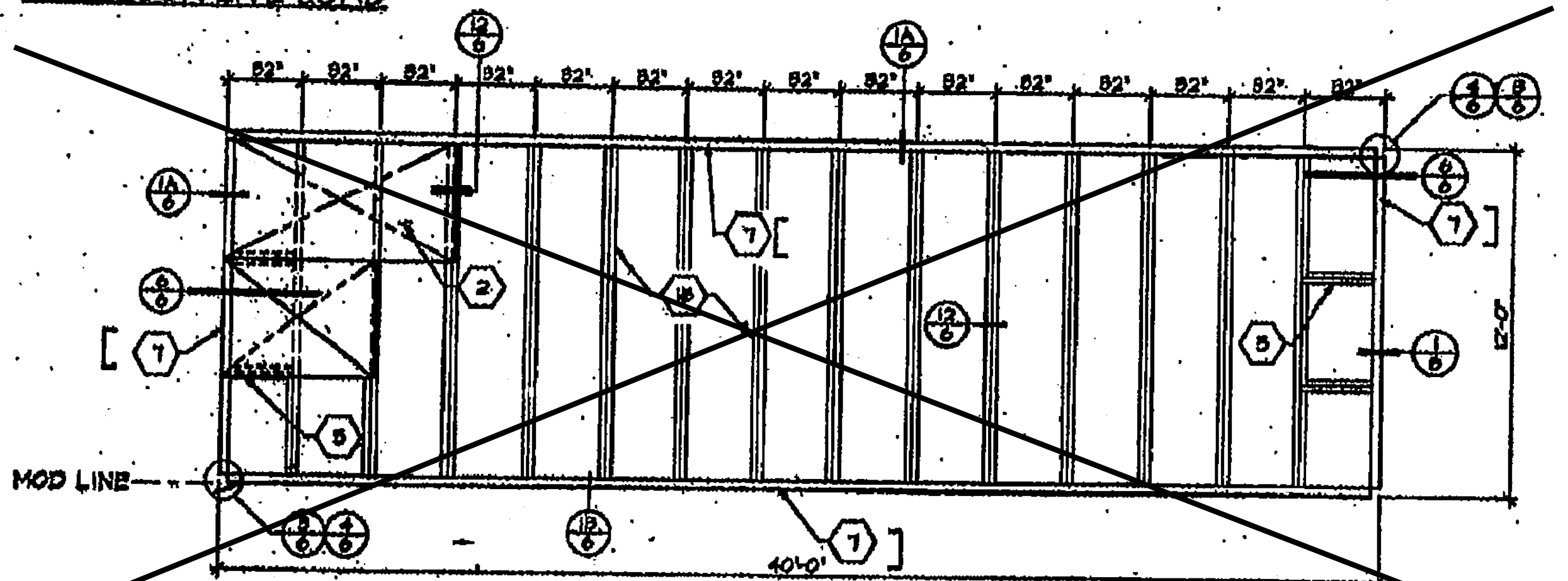
3767

KEYNOTES

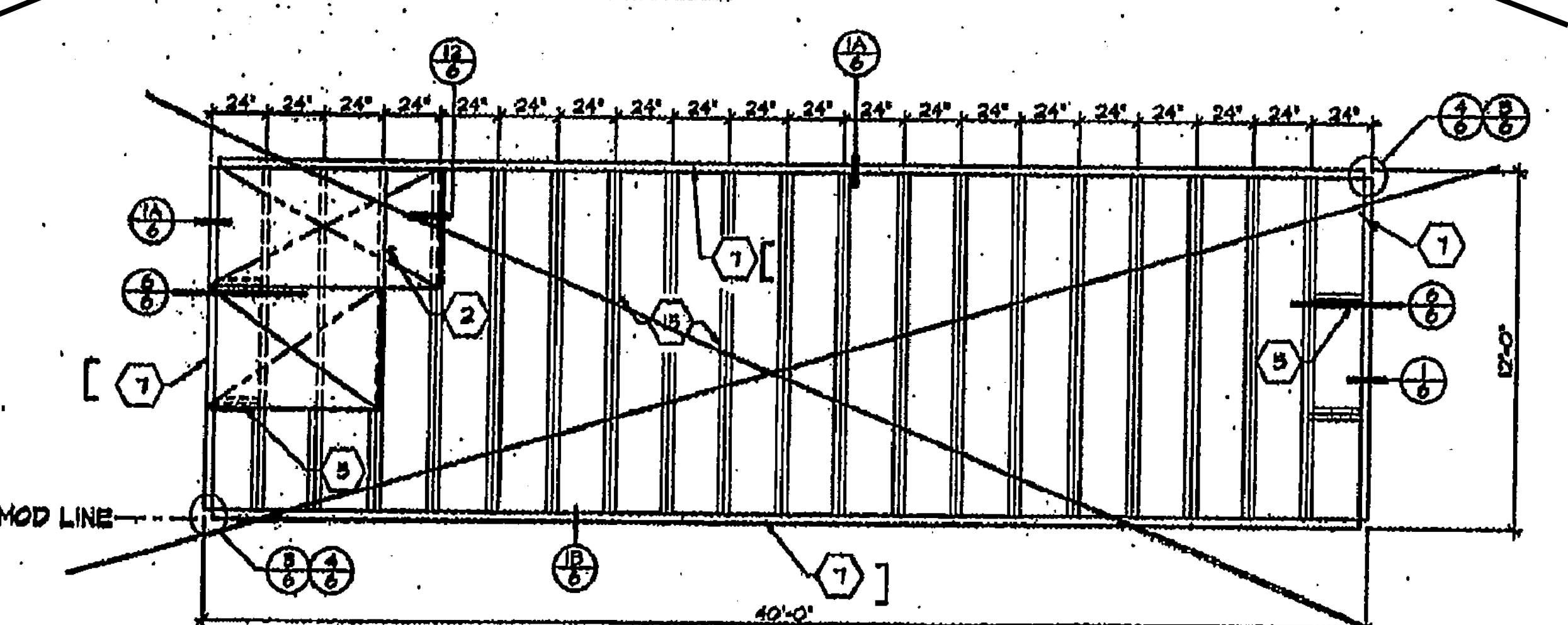
- 1 STEEL ROOF DECK - 22 GA. ROLL FORMED DECK WITH 8" STANDING SEAM. SEE NOTE 1 SHT. 6A FOR ATTACH.
- 2 PLYWOOD FLOOR SHEATHING - 1 1/2" A.P.A. STURD-1 FLOOR. T & G, P.S. 1-88. SEE NOTE 2 SHT. 6A OR 6B FOR ATTACH.
- 3 1 1/2" x 10" x 1/2" x 10" GA.
- 4 1 1/2" x 12" x 1/2" x 12" GA. STEEL ROOF HEADER.
- 5 1 1/2" x 11" GA. STEEL BLOCK @ 40' O.C.
- 6 NOT USED
- 7 7" x 4.0 LB PERIMETER FLOOR FRAMES.
- 8 1 1/2" x 11" GA. STEEL ROOF JOIST @ 40' O.C.
- 9 STEEL COLUMN - 8 1/2" x 8 1/2" x 1/2" x 16" TUBE.
- 10 NOT USED
- 11 HELD WASHER FOR CEILING GRID - TYP. BOTH SIDES. SEE DETAIL 15.16.
- 12 STRAP TACKED TO UNDERSIDE OF JOIST @ 24" O.C. FOR INSULATION SUPPORT.
- 13 8/16" FULL HEIGHT STIFFENER AT CURLIN LOCATIONS.
- 14 2" x 20 GA. STRAPS 1/2" MIN. 1/8" FILLET WELD EACH END TO ROOF BEAM/HEADER TYP.
- 15 1 1/2" x 11" GA. STEEL FLOOR JOIST @ SEE FRAMING PLAN FOR FLOOR JOIST SPACING.
- 16 PLYWOOD ROOF SHEATHING 5/8" G-D INT WITH EXT. GLUE 48/24 INDEX P.S. 1-74 SQUARE EDGES WITH PLYWOOD CLIPS @ 16" O.C. LONG EDGES.
- 17 1 1/2" x 1/2" x 1/2" BRACE (SEE SHT. 5J DET 10)



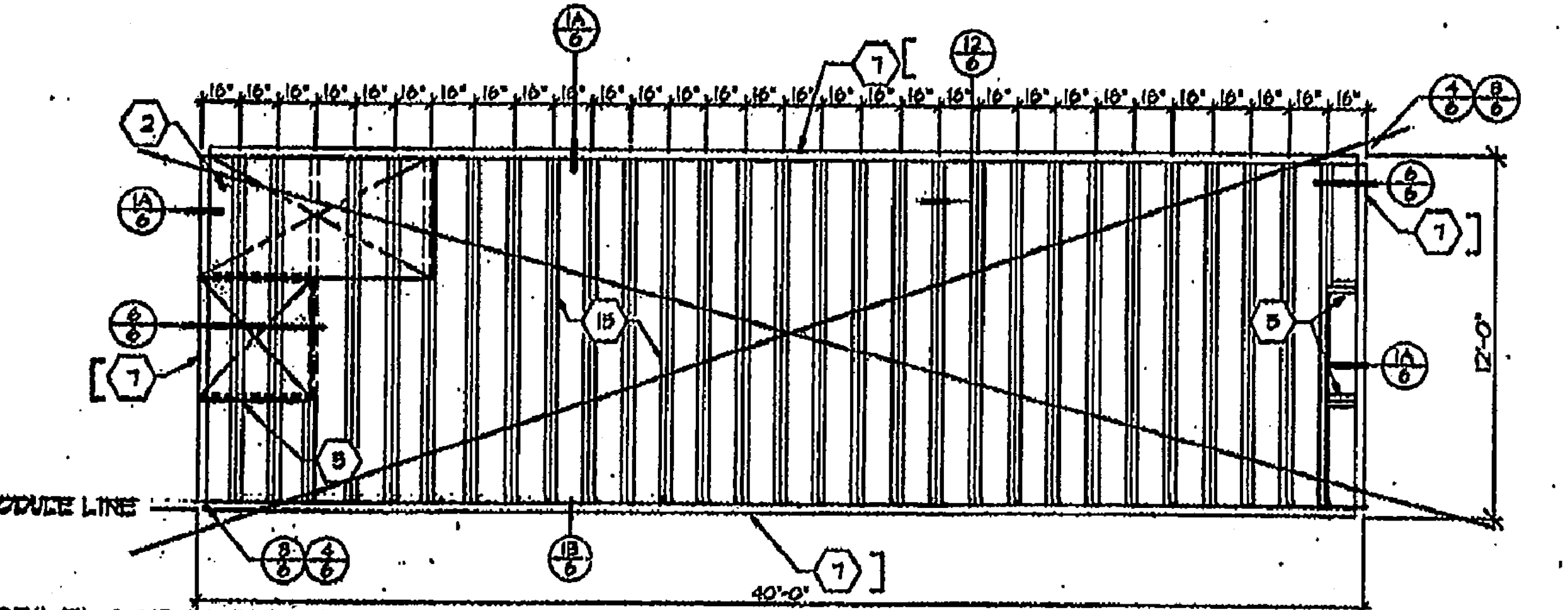
50# FLOOR LIVE LOAD



50# FLOOR LIVE LOAD + 20 LBS PARTITIONS



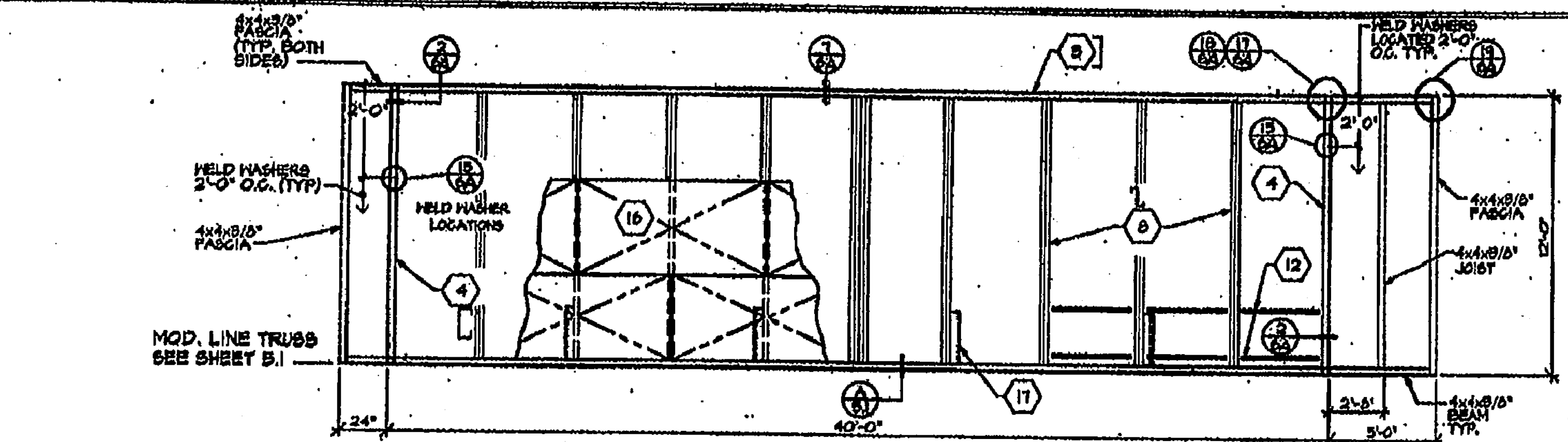
100# FLOOR LIVE LOAD



125# FLOOR LIVE LOAD

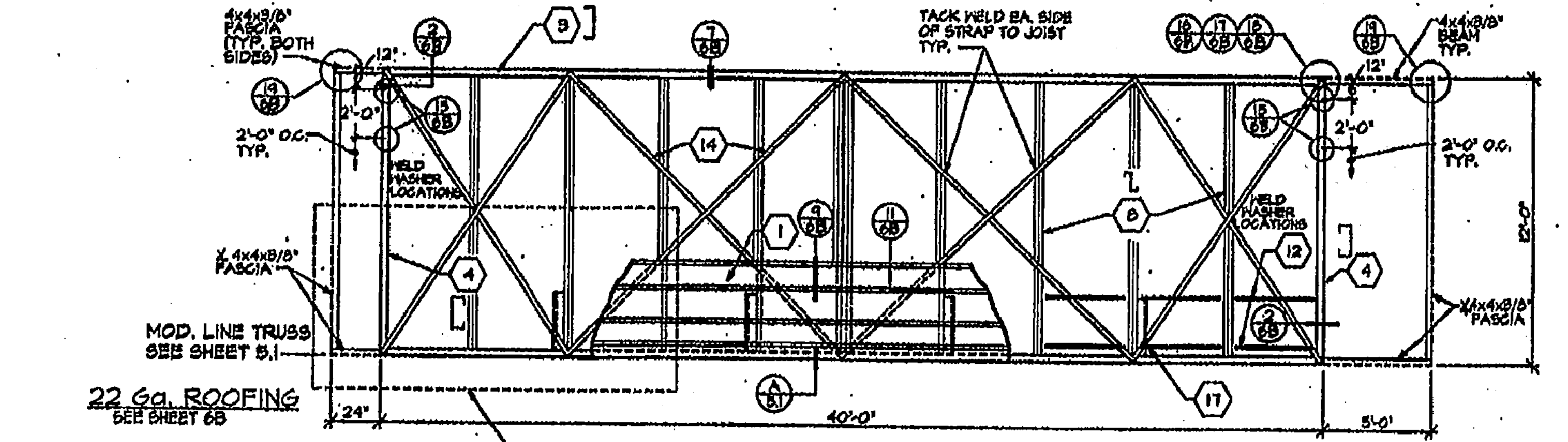
FLOOR FRAMING

SCALE 1/4" = 1'-0"



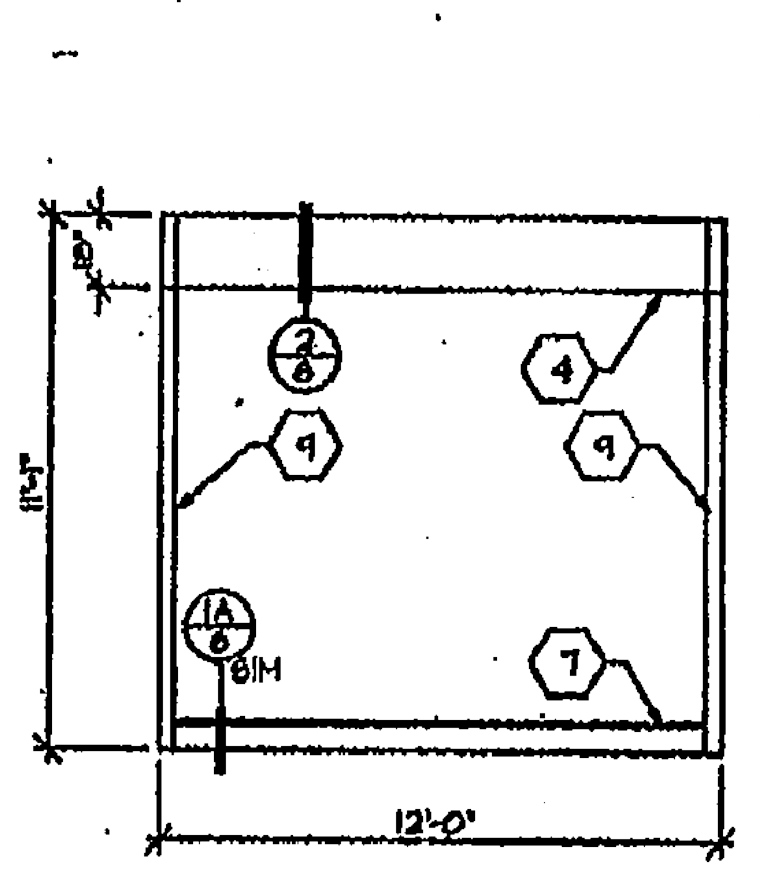
PLYWOOD DECK ROOFING

SEE SHEET 6A OR 6C

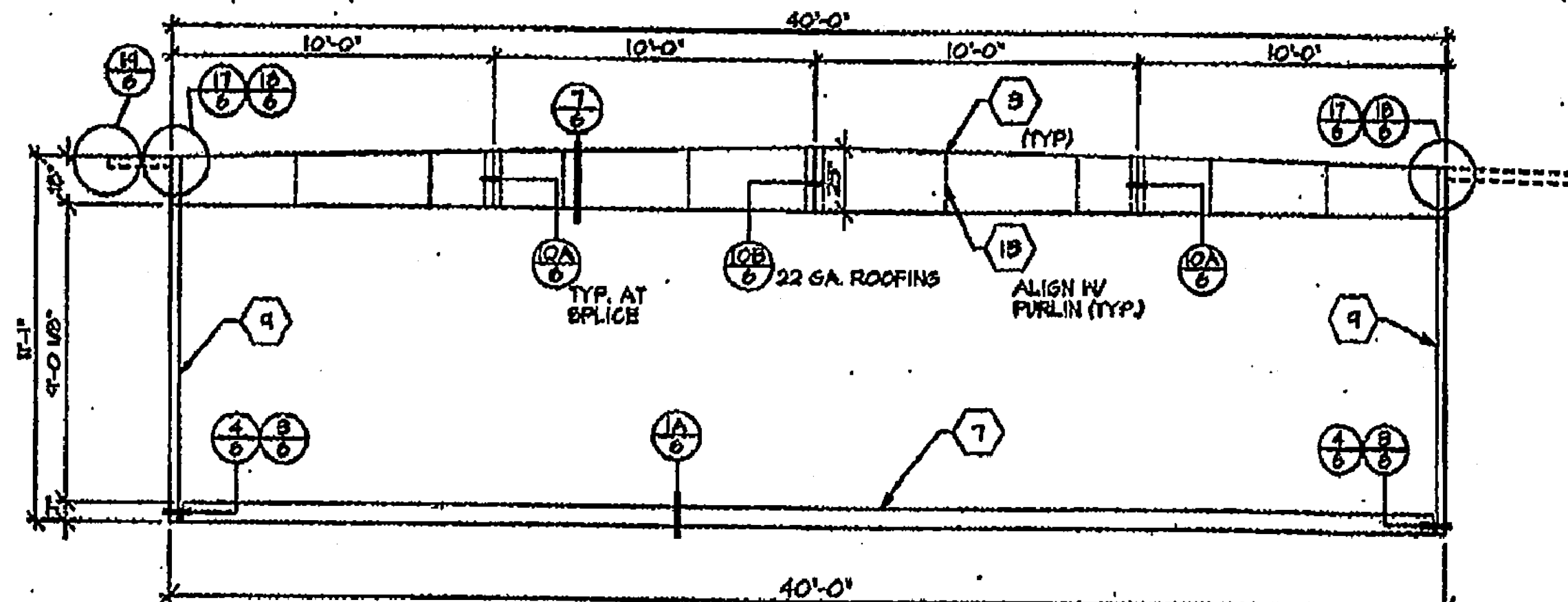


ROOF FRAMING

SCALE 1/4" = 1'-0"



TYPICAL ENDWALL



OUTSIDE ELEVATION

STRUCTURAL ELEVATION

SCALE 1/4" = 1'-0"

D.S.A.

REVISED

INDICATIONS AND
OF REVISIONS

NO. 1

DATE 5-10-74

AM 43039

DATE 5-2-74

CHECKED

REVISIONS



16833 Vanowen Ave., Riverside, CA 92504
 Phone (951) 798-7100
 Fax (951) 798-0243

TURORA MODULAR INDUSTRIES

RELOCABLE BUILDING FOR
WILLIAMS/SCOTSMAN GROUP

**FLOOR FRAMING,
 ROOF FRAMING,
 STRUCTURAL
 ELEVATIONS**

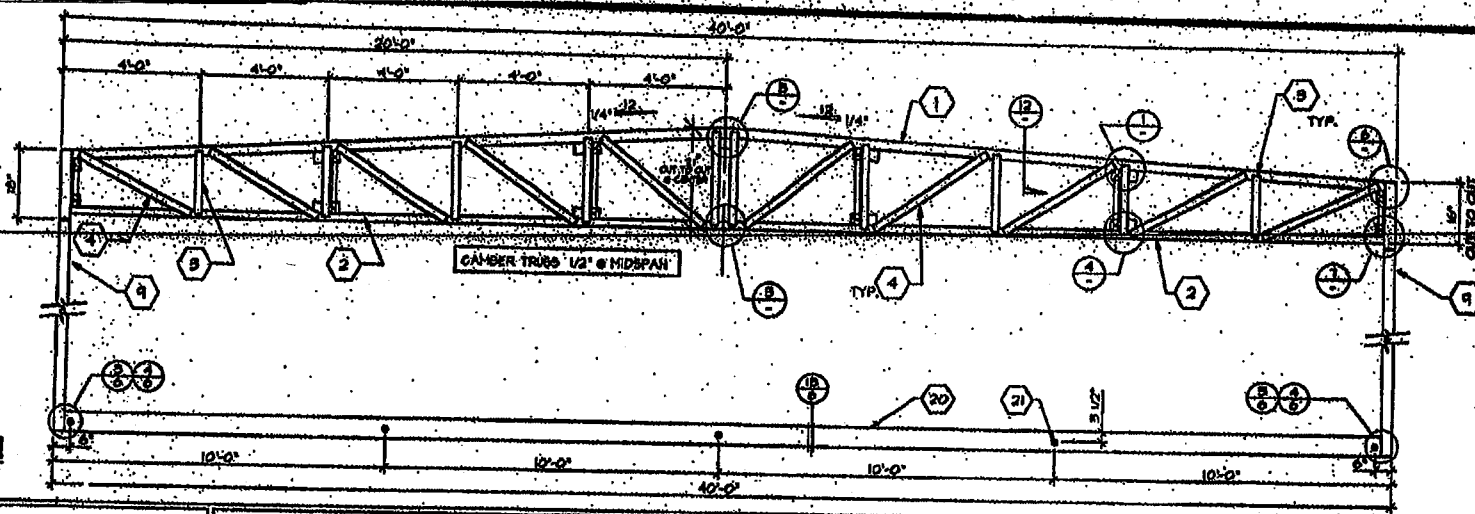
SCALE 1/4" = 1'-0"

SHEET

3767

COURTESY: PG283-5D19

TRUSS ELEVATION
SCALE 3/8" = 1'-0"



KEYNOTES

1. 2" x 8" x 1/2" TOP CHORD.
2. 2" x 8" x 3/8" 1/2" CHAMFER AT MIDPOINT.
3. 2" x 1 1/2" x 1/2" x 3/8" VERTICAL MEMBER.
4. 2" x 1 1/2" x 1 1/2" x 3/8" DIAGONAL MEMBER TYP.
5. NOT USED.
6. NOT USED.
7. 1/4" GAP PLATE.
8. NOT USED.
9. TO 2" x 1 1/2" x 3/8" STEEL TUBE.
10. NOT USED.
11. 3/8" x 3" x 1/2" PLATE WITH 1 1/2" HOLE FOR 3/8" MACHINE BOLT. LOCATE PLATE AT 3'-0" O.D. FOR MODULE CONNECTION. SEE DETAIL 10.
12. 3/8" MACHINE BOLT FOR MODULE CONNECTION.
13. NOT USED.
14. 3/2" x 3" x 1/2" x 3/8" T.B.
15. ROOF JOIST - SEE NOTE 3 SHEET 5.
16. 1 1/2" x 1 1/2" x 3/8" BRACE @ 3'-0" O.D.
17. 1 1/2" x 1 1/2" x 1/4" END DIAGONAL (WITH 4" OF 3/8" FILLET FELD EACH END).
18. 3/8" PLATE FITTED INSIDE TUBE COL. & WELDED IN PLACE TO COLUMN IN 3/8" FILLET FELD TWO SIDES.
19. 2" x 1 1/2" x 1 1/2" x 1/4" DIAGONAL W/ MIN. OF 4" OF 3/8" FILLET FELD EA. END.
20. 7" x 9.8 LB PERIMETER FLOOR FRAME.
21. 3/8" MACHINE BOLT @ MOD. CONNECTION SEE DETAIL 10 SHEET 6.

D.S.A.

REVISED

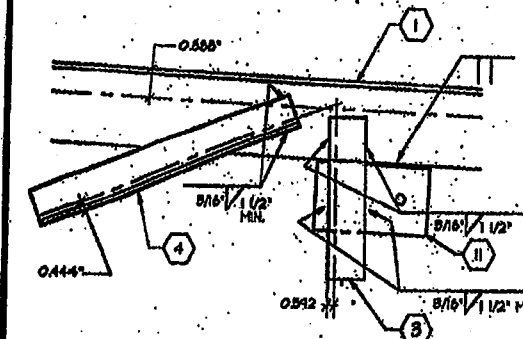
PC 101

10/18/80

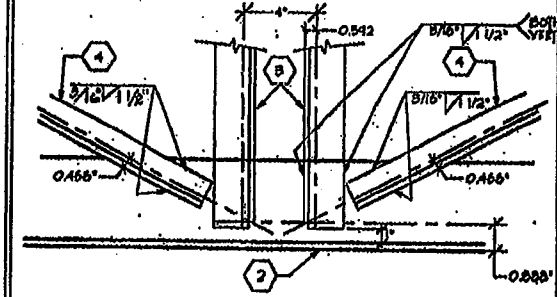
10/18/80

CHECKED

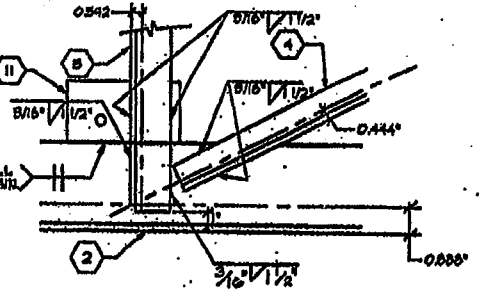
REVISIONS



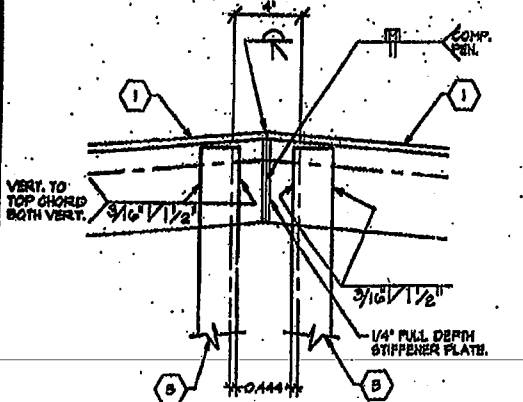
1 VERT. & DIAG. TOP CHORD



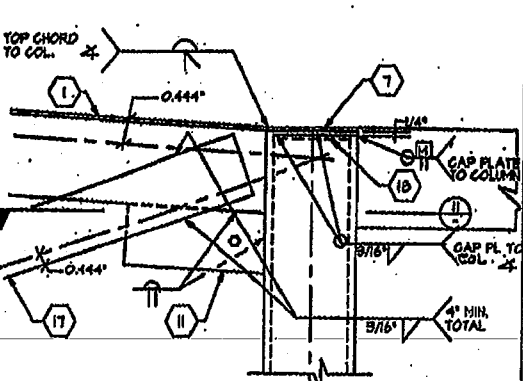
2 BOTTOM CHORD AT MIDSPAN



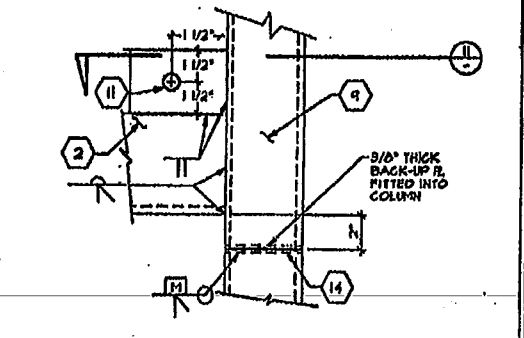
3 VERT & DIAG TO BOTTOM CHORD



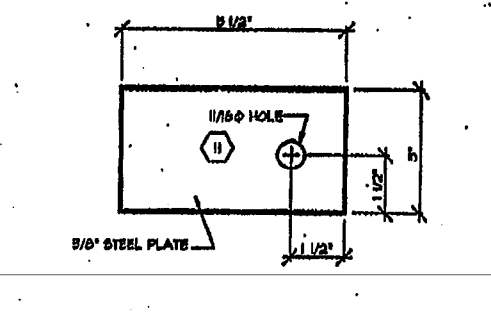
5 TOP CHORD AT MIDPOINT



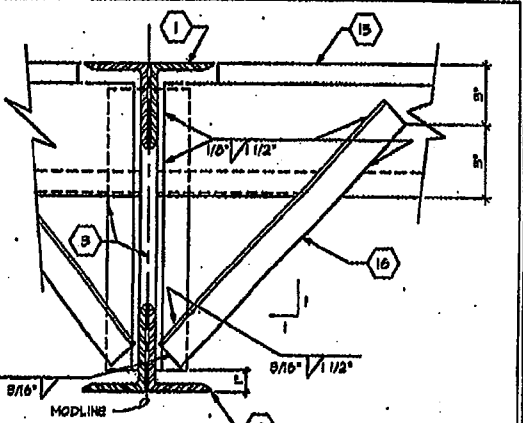
6 POST CONN TO TRUSS



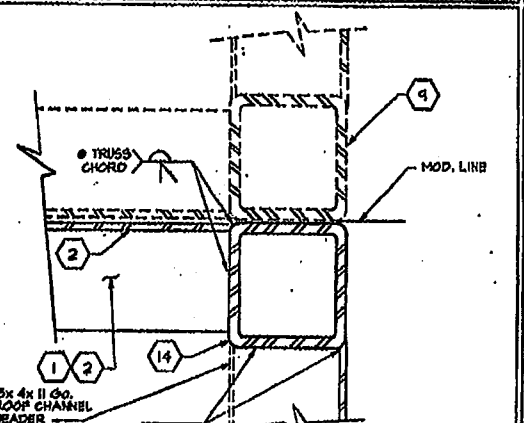
7 POST CONN. TO TRUSS



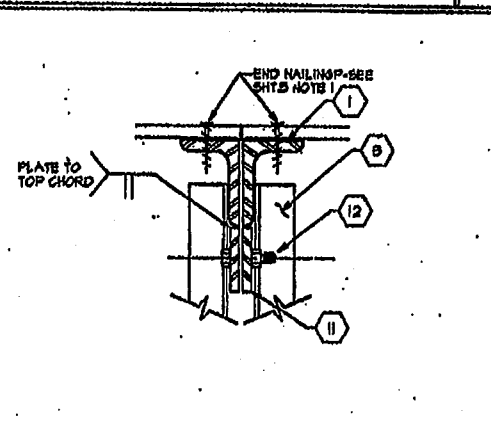
8 TIE PLATES



9 TRUSS TO ROOF JOIST BRACING



10 MODULE CONN AT TOP/BOT. CORD



12 MODULE CONNECTION

TURORA MODULAR INDUSTRIES

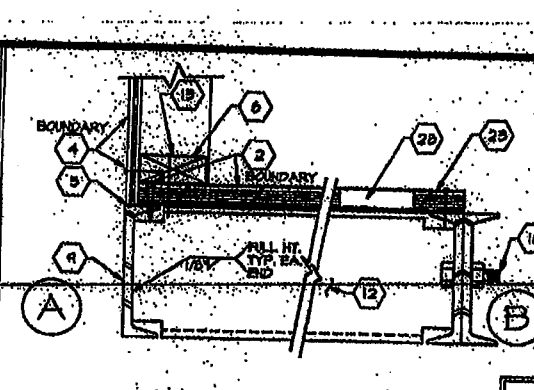
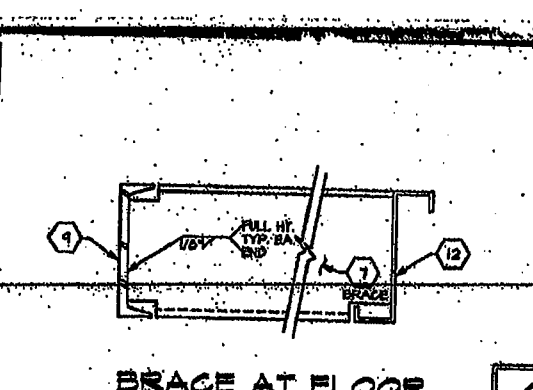
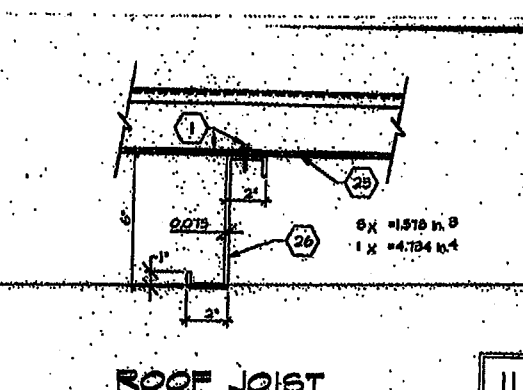
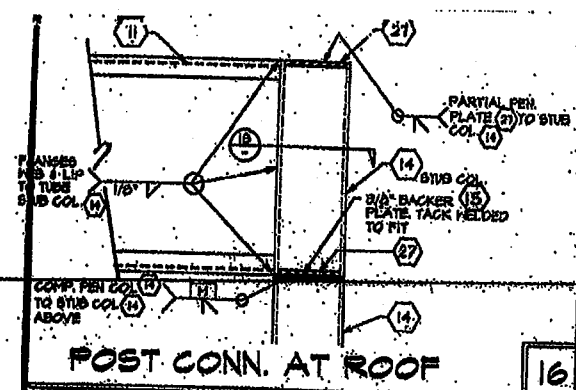
10033 Montclair Ave., Montclair, CA 95034
Phone (925) 739-7100
Fax (925) 739-0253

REL OCCASIONALLY DELIVERING FOR:
WILLIAM J. SCOTTSMAN
STOCKPILE

STEEL TRUSS SECTION AND DETAILS

U

PC253-SI.DWG



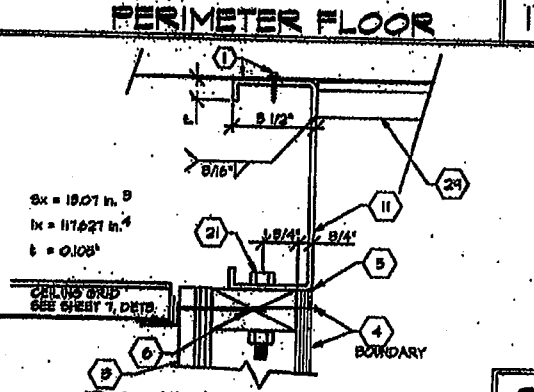
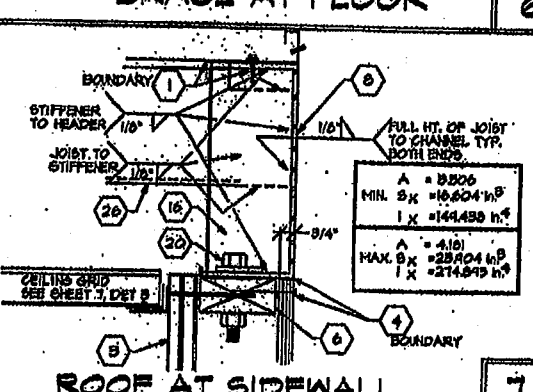
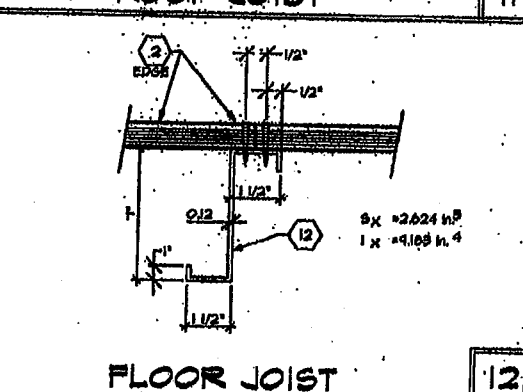
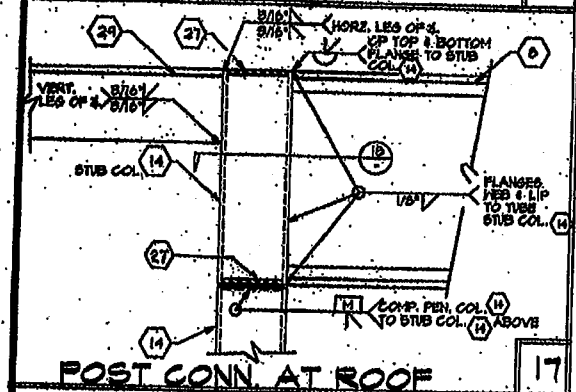
- KEYNOTES**
- STEEL ROOF DECK - 22 GA. ROLL FORMED 2 1/2\"/>
 - PLYWOOD FLOOR SHEATHING - SEE NOTE 2.5. ATTACH PLYWOOD TO SUBSTRATE WITH SELF TAP SCREWS @ 4\"/>
 - TYPICAL INTERIOR FINISH - SEE SHEET 4
 - TYPICAL EXTERIOR FINISH - SEE SHEET 4
 - BEALANT
 - 2 x 4 TOP OR BOTTOM PLATE
 - 7x11 66. STEEL BRACE HELDED TO PERIMETER FRAME AND FLOOR JOIST.
 - 10/20/15x3 1/2x100 GA. CHANNEL
 - 3x4 8 PERIMETER FRAME
 - 4x4 1/2 STIFFENER
 - 18x 1/2x126A. CHANNEL ROOF HEADER
 - 7x11 66. FLOOR JOIST.
 - 16d NAIL @ 8\"/>
 - STEEL COLUMN - 8 1/2x 5 1/2x 9/16\"/>
 - 9/16\"/>
 - NOT USED
 - 5/8\"/>
 - 5 1/2x 8 1/2x 5/16\"/>
 - 5 1/2x 8 1/2x 5/16\"/>
 - 1/2\"/>
 - 1/2\"/>
 - CHANNEL FRAME - GRIND HELDS ON EXPOSED FACES SMOOTH
 - AT MODULE JOINT TAKE PLYWOOD TO EDGE OF CHANNEL. AT PERIMETER, HOLD PLYWOOD BACK AS INDICATED.
 - WELD WASHER - 1-3/8x 5/8\"/>
 - 2x 20 GA. STRAPS 1/4\"/>
 - 6x14 66. ROOF JOIST
 - 1/4\"/>
 - 5\"/>
 - 4x4x8/16\"/>

D.S.A.

REVISED

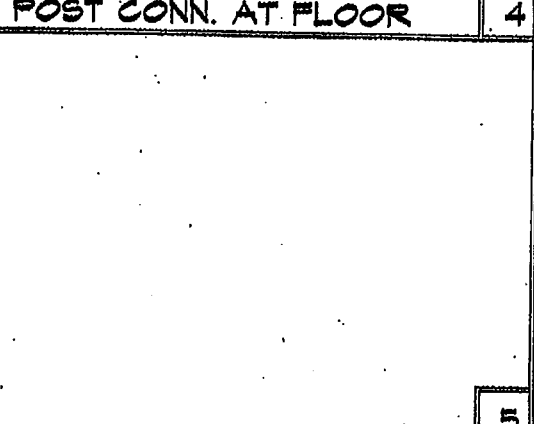
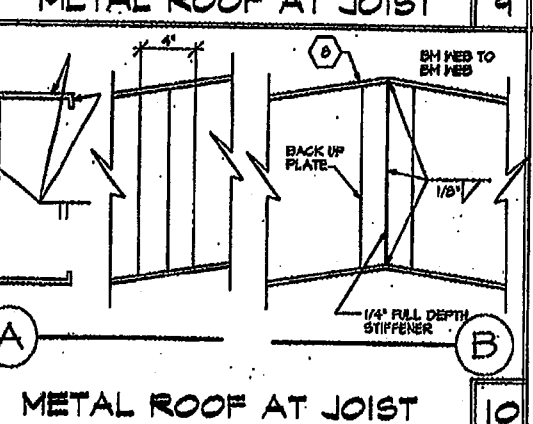
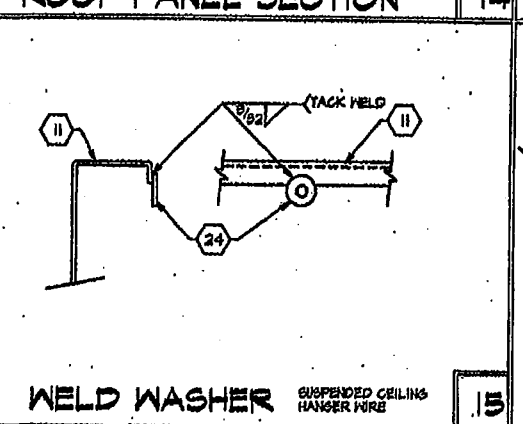
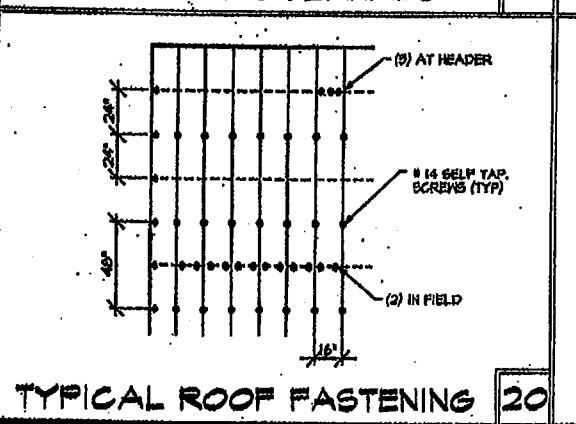
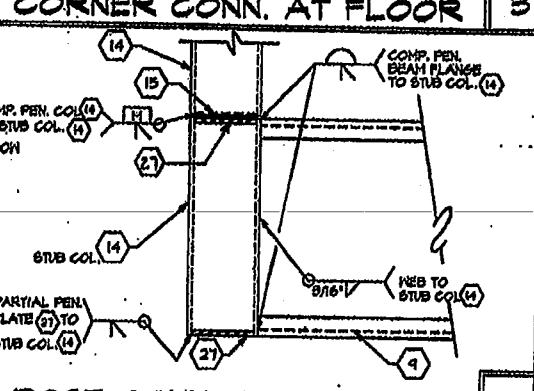
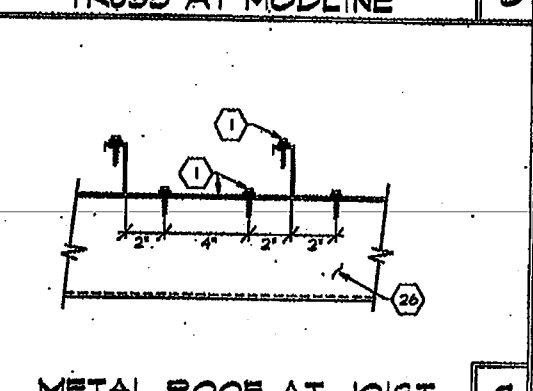
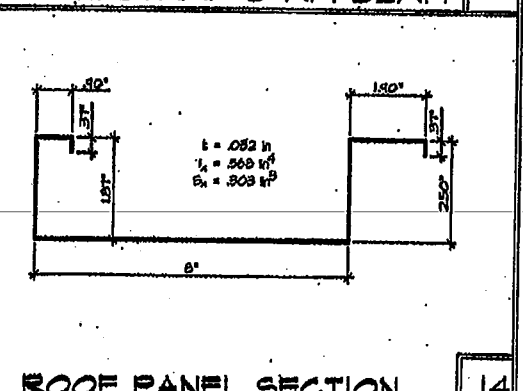
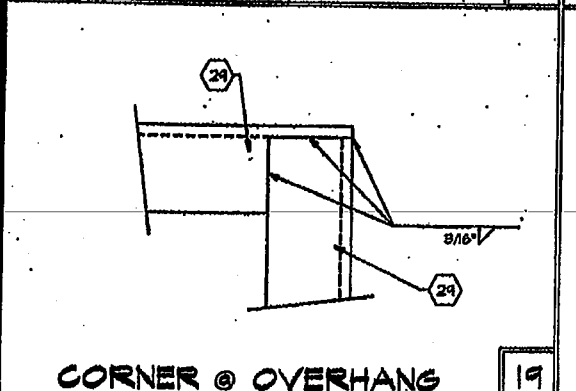
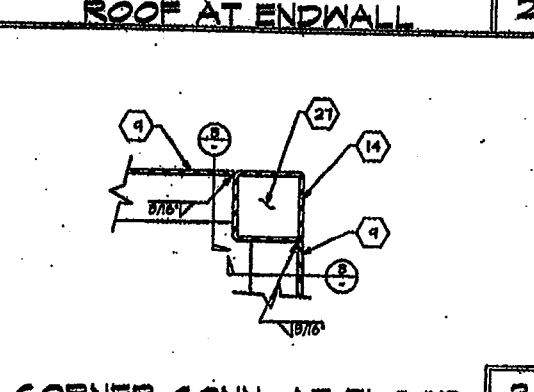
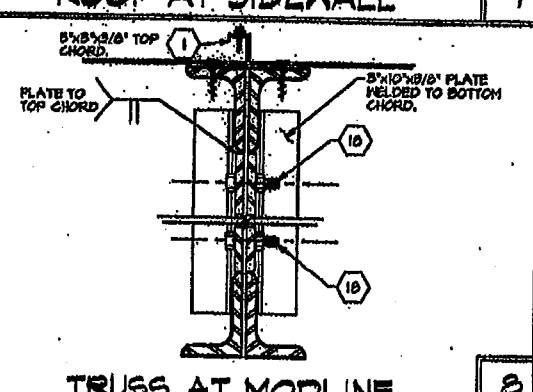
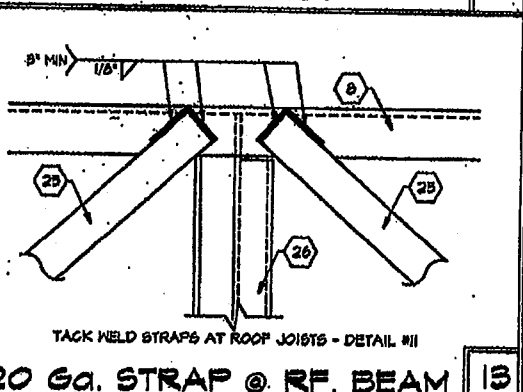
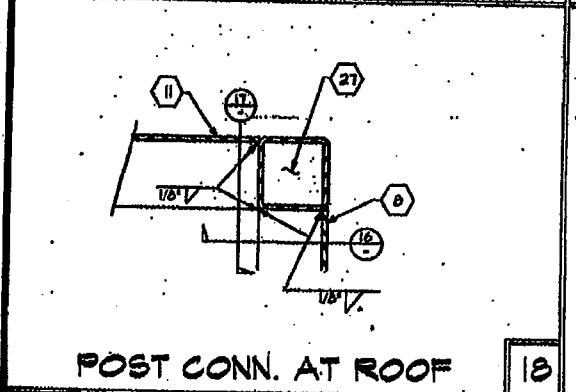
DATE: 1-2-96

BY: [Signature]



CHECKED

REVISIONS



10055 Kromberg Ave., Brentwood, CA 92009
Phone (619) 799-7788
Fax (619) 799-6255

TURORA MODULAR INDUSTRIES

RELOCABLE BUILDING FOR
WILLIAMS/SCOTSMAN GROUP

STRUCTURAL DETAILS AND NOTES

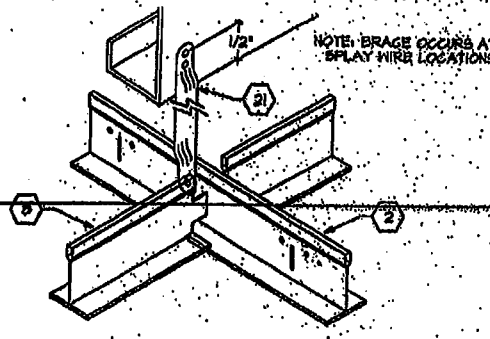
22 GA. ROOFING

DATE: 1-2-96

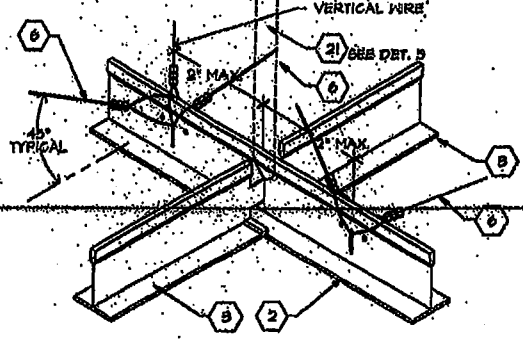
SHEET

6B

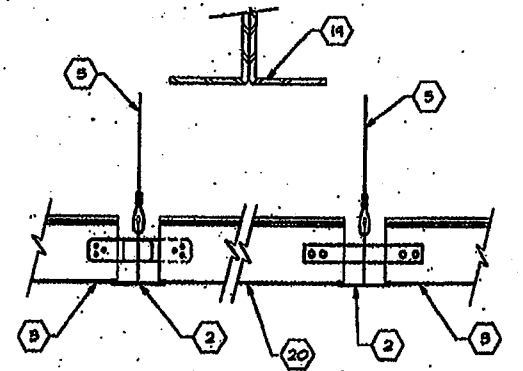
3767



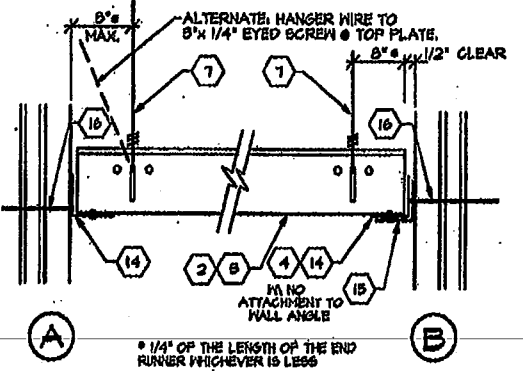
VERTICAL BRACE



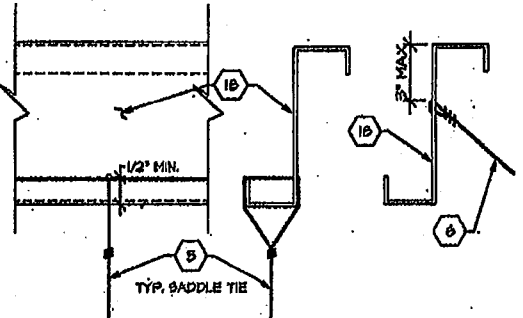
SPLAY WIRE



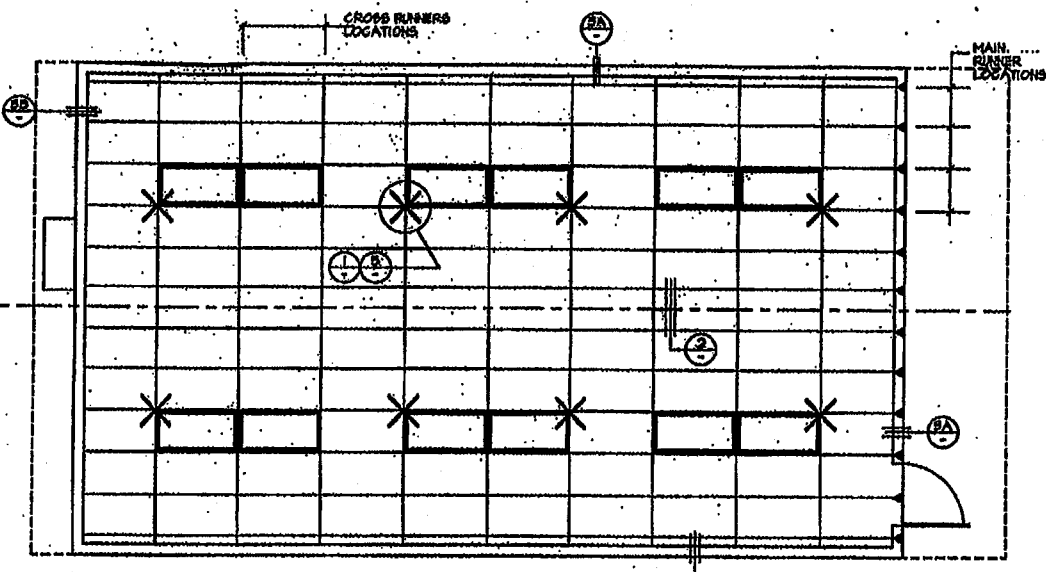
GRID AT MODLINE



GRID AT WALL



WIRE ATTACHMENT



REFLECTED CEILING PLAN
SCALE 1/4\"/>

CEILING HEIGHT 8'-0\"/>

ALL UNIT SHOWN
8' UNIT OFF. HAND

- KEYNOTES**
1. MAIN RUNNERS @ 4'-0" O.C. MAX WITH HANGER WIRES SPACED @ 4'-0" O.C. MAX.
 2. MAIN RUNNER, DOMN CORP. DX-25 HEAVY DUTY
 3. CROSS RUNNER, DOMN CORP. DX-25 HEAVY DUTY
 4. WALL RUNNER, DOMN CORP. 171EV
 5. TYPICAL HANGER WIRE TO BE 1/2" DIA STEEL WIRE ATTACHED TO STRUCTURE ABOVE AND TO GRID WITH (2) 1/2" DIA STEEL WIRE @ 1/2" - SEE DETAIL 1
 6. TYPICAL SPLAY WIRE TO BE 1/2" DIA STEEL WIRE ATTACHED TO STRUCTURE ABOVE AND TO GRID WITH (2) 1/2" DIA STEEL WIRE @ 1/2" - SEE DETAIL 1
 7. AT END OF RUNNERS, A HANGER WIRE SHALL BE ATTACHED TO STRUCTURE ABOVE AND TO GRID WITH (2) 1/2" DIA STEEL WIRE @ 1/2" - SEE DETAIL 1
 8. VERTICAL WIRES MORE THAN 16' OUT OF PLUMB SHALL HAVE COUNTERBALANCE WIRES INSTALLED.
 9. RUNNERS MAY BE ATTACHED TO WALL MOLDING AT (2) ADJOINING WALLS; AT OTHER WALLS NO ATTACHMENT, WHERE THERE IS NO ATTACHMENT THERE SHALL BE A 1/2" CLEARANCE BETWEEN END RUNNER AND FACE OF WALL.
 10. CEILING AREAS EVERY 144 SQ. FT. OR LESS SHALL HAVE SPLAY WIRES INSTALLED AS INDICATED ON CEILING PLAN SPLAY WIRES SHALL BE TAUT BUT SHALL NOT DISTORT GRID.
 11. ELECTRICIAN SHALL PROVIDE (2) BLACK HANGER WIRES AT OPPOSITE CORNERS OF ALL LIGHT FIXTURES. WIRES SHALL BE ATTACHED TO STRUCTURE ABOVE PER NOTE 5. LIGHT FIXTURES SHALL BE ATTACHED TO CEILING GRID WITH (2) #8 SHEET METAL SCREWS.
 12. DUCTWORK, IF REQUIRED, SHALL BE RIGIDLY ATTACHED TO STRUCTURE ABOVE AT INTERVALS NOT TO EXCEED 4' AND SHALL NOT BE CLOSER THAN 4" TO ANY WIRE.
 13. CEILING REGISTERS, WHEN INDICATED ON PLANS, SHALL BE ATTACHED TO STRUCTURE ABOVE PER NOTE 5.
 14. CONT. WALL 1/8" ANGLE WITH POP RIVET TO EACH JOINT.
 15. 1/8" CONTINUOUS WALL ANGLE.
 16. 6d NAIL @ 18" O.C. INTO BLOCK OR STUD.
 17. NOT USED.
 18. ROOF JOIST- SEE SHEET 5.
 19. ROOF TRUSS SEE SHEET 5.
 20. CLOSE OFF CROSS TIE. INSERT ONE END OF CROSS TIE INTO MAIN RUNNER WITH BAYONET. AT OPPOSITE END TO FIT (IF LESS THAN 24") INSERT MIN. 30 GA. STRAP THRU MAIN RUNNER, SECURE TO CROSS TIE W/ (2) #8 TEK SCREWS AT EACH END.
 21. VERTICAL BRACE- 1/2" STEEL CONDUIT AT SPLAY WIRE LOCATIONS. DRILL 1/2" HOLE THRU CONDUIT AT TOP & BOTTOM. ATTACH CONDUIT TO JOIST ABOVE W/ (2) #8 TEK SCREWS. WITHIN 2' OF CROSS RUNNER

D.S.A.

REVISED

NO. 5-16-96

DATE 9-2-96

CHECKED

REVISIONS



JURORA MODULAR INDUSTRIES

10033 Krommels Ave., Reynolds, OH 43074
Phone (603) 789-7735
Fax (603) 789-0025

RELATIONSHIP BUILDING FOR
WILLIAMS/SCOTSMAN GROUP

REFLECTED CEILING PLAN

SHEET

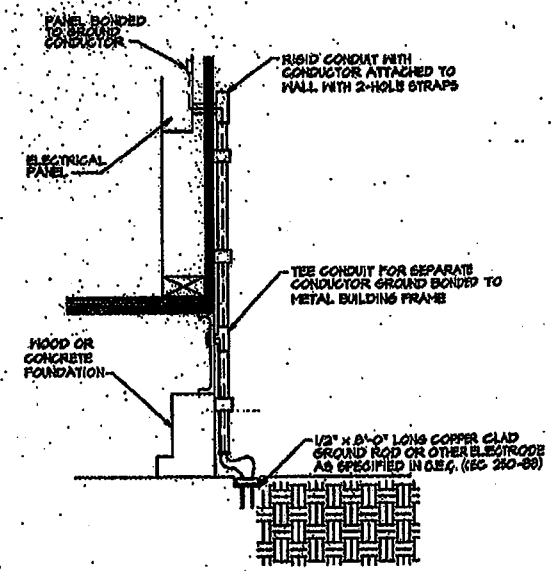
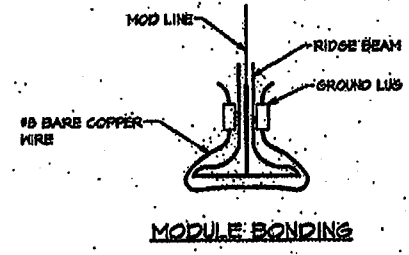
3767 PG289-1D116

File: H:\PC_255\PC255-7 List edited: 09/07/95 @ 08:19 by: Jerry

PANEL A		120/240 VOLT		PHASE	B	WIRE
100A BUS		100A MAIN				
OUTLETS		WATTAGE		BREAKER		REMARKS
Recept	Light	Other	A	B	C	
1	2		240	20		
2	6		480	20		
3	2		240	20		
4	2		240	20		
5		SATUR	2148	40	2	23 TON HVAC
6			2148			
7						
8						
9						
10						
11						
12						
13						
14						
15						
16						
17						
18						
19						
20						
TOTALS		8604	8504	= 7108		246 amps cap.
LCL = 6020		LCL N2B	= 1907		86.9 amps	

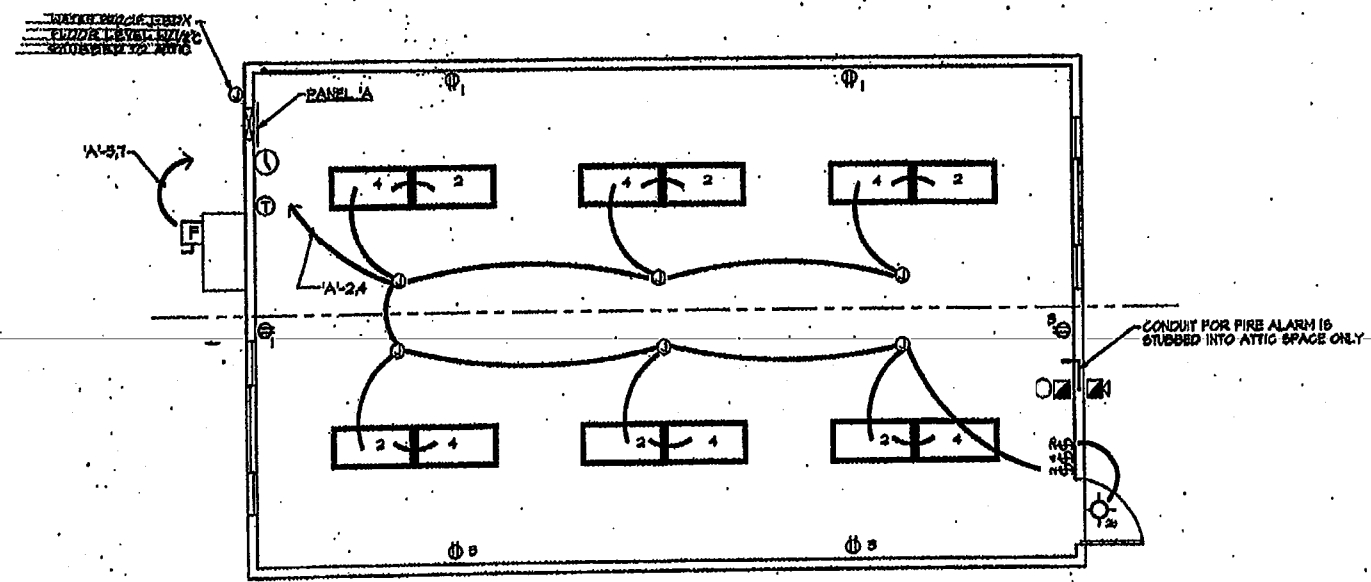
SYMBOL	DESCRIPTION
Ⓢ	15" DUPLEX RECEPT - 15A 125V 3 WIRE GROUNDING TYPE - "GFI" DENOTES GROUND FAULT INTERRUPTER
Ⓢ	40" LIGHT SWITCH - SINGLE POLE
Ⓢ	JUNCTION BOX
Ⓢ	DISCONNECT SWITCH - BUILT INTO A/C UNIT
Ⓢ	40" THERMOSTAT
Ⓢ	40" FIRE ALARM PULL STATION-STROBE J-BOXES & CO.
Ⓢ	2-6" FIRE ALARM HORN, J-BOX & CONDUIT ONLY
Ⓢ	ELEC. PANEL
Ⓢ	CLOCK 5" BELOW CEILING LINE

TYPE	SYMBOL	DESCRIPTION	WATT/	MANUFACTURER
	Ⓢ	2 WIRE 15 AMP RECEPT IN BURNER AREA TO BE INSTALLED IN BURNER AREA	150 WATT	GREBORT 24184201A
	Ⓢ	120 VOLT 15 AMP RECEPT IN BURNER AREA TO BE INSTALLED IN BURNER AREA	150 WATT	KEBALL 2693

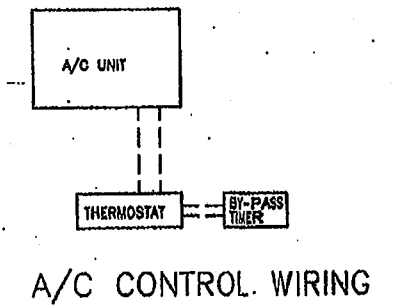


SYSTEM GROUND DETAIL
NOT BY PORTABLE MANUFACTURE

- SIZE OF CONDUCTORS SHALL COMPLY WITH SEC TABLE 250-95.
- BOND SEPARATE CONDUCTORS FROM GROUND ROD TO ELECTRICAL PANEL AND TO METAL BUILDING FRAME (CEC 250-81). IN ADDITION TO THE DETAIL SHOWN ABOVE, BOND THE ELECTRICAL GROUND TO METAL WATER PIPE EMBEDDED AT LEAST 10 FT. INTO THE SOIL IF AVAILABLE. (CEC 250-81 & 250-89).
- ALL MODULES OF THE METAL FRAME BUILDING SHALL BE ELECTRICALLY BONDED TOGETHER. (BOLTING ONLY IS NOT ACCEPTABLE BONDING.)
- CHECK RESISTANCE TO GROUND. IF RESISTANCE EXCEEDS 25 OHMS, INSTALL ADDITIONAL GROUND RODS (CEC 250-94) AS REQUIRED, WITH CONDUCTORS AS SHOWN, SEPARATED BY AT LEAST 6'-0" UNTIL RESISTANCE IS 25 OHMS OR LESS.
- FIELD INSPECTOR SHALL WITNESS THE GROUNDING TEST.
- ADDITIONAL OUTLETS AND OR J-BOXES MAY BE ADDED AS NEEDED AND OR PER DISTRICT'S APPROVED REQUEST TO MATCH SITE SPECIFIC REQUIREMENTS PROVIDED THESE WORK WITH BUILDING'S ELECT. PANEL LOADS.



LIGHTING AND POWER PLAN
SCALE 1/4" = 1'-0"



A/C CONTROL WIRING

REVISED
DATE: 10/15/96
BY: [Signature]

CHECKED
DATE: 10/15/96
BY: [Signature]

REVISIONS

CHECKED

REVISIONS



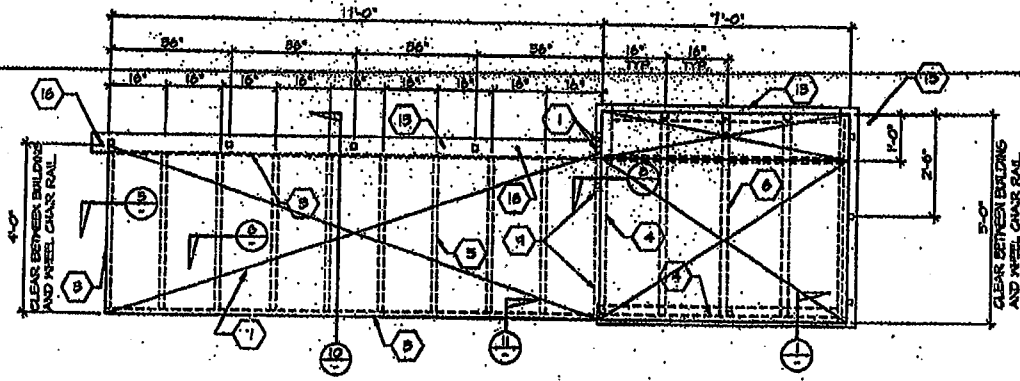
TURORA MODULAR INDUSTRIES
16535 Knoxville Ave., Riverside, CA 92504
Phone (951) 780-7300
Fax (951) 780-0200
WILLIAMS/SCOTSMAN GROUP

ELECTRICAL, POWER & LIGHTING FLOOR PLAN & PANEL SCHEDULE

DATE: 10/15/96
SHEET

8767

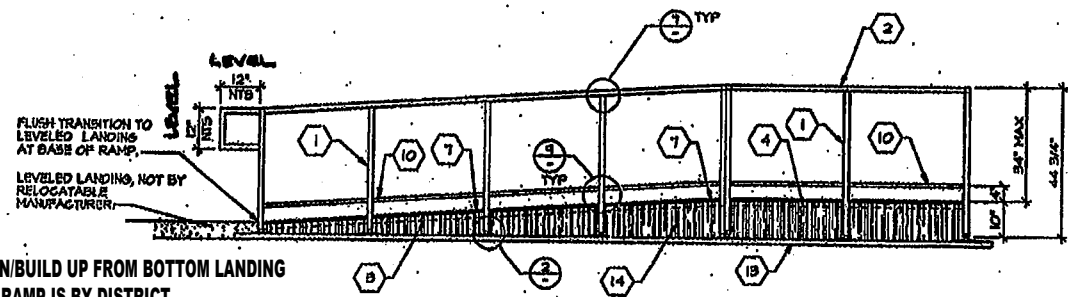
FILE: H:\PC_253\PC253-8.DWG Last edited: MAY 05, 96 @ 12:20 p.m. by: ??



FRAMING PLAN
SCALE 1/2" = 1'-0"

RAMP

LANDING

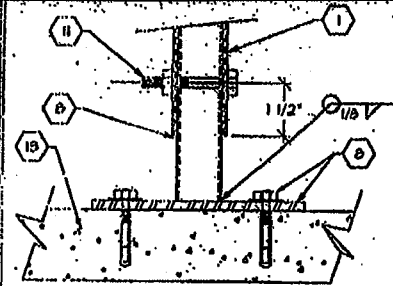


FRONT ELEVATION
SCALE 1/2" = 1'-0"

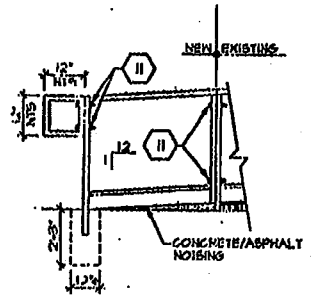
RAMP

LANDING

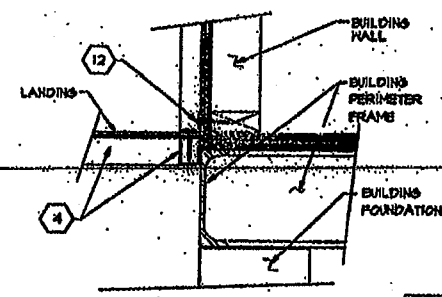
TRANSITION/BUILD UP FROM BOTTOM LANDING TO TOE OF RAMP IS BY DISTRICT.



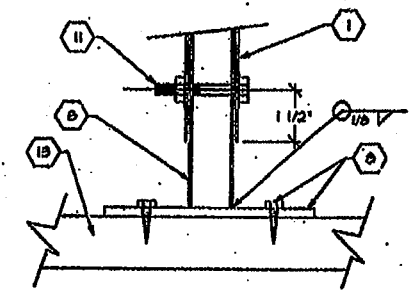
BASE



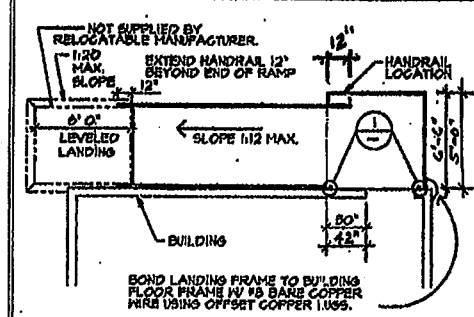
ALT. ADDITION



LANDING TO BUILDING

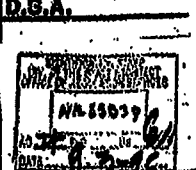


BASE



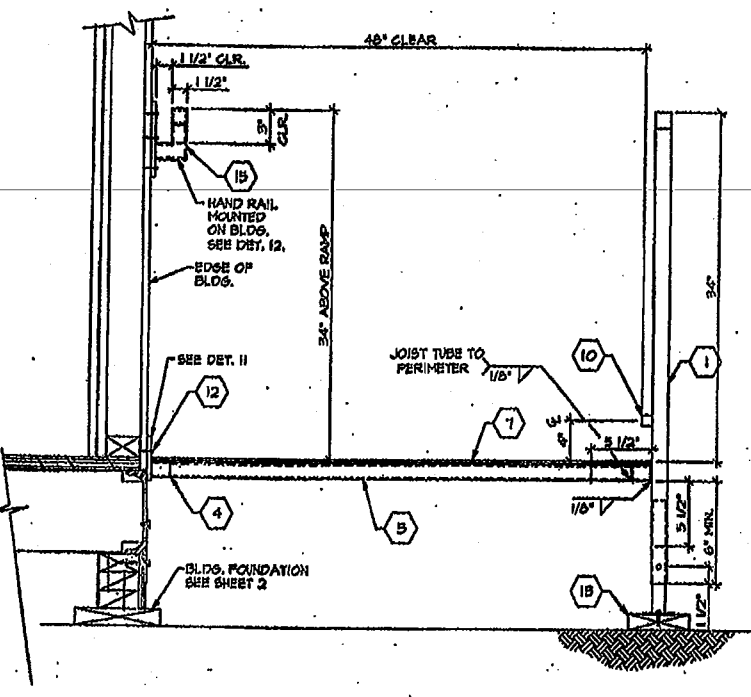
HANDRAIL LOCATIONS

- KEYNOTES**
- 1 UPRIGHT TUBE - 1-1/2" x 1-1/2" x 16 GA. SQUARE TUBE.
 - 2 HANDRAIL TUBE - 1-1/2" x 1-1/2" x 16 GA. SQUARE TUBE.
 - 3 RAMP PERIMETER TUBE - 2-1/2" x 1-1/2" x 16 GA. SQUARE TUBE.
 - 4 LANDING PERIMETER TUBE - 1-1/2" x 2-1/2" x 16 GA. SQUARE TUBE.
 - 5 RAMP CROSS TUBE - 1-1/2" x 1-1/2" x 16 GA. SQUARE TUBE.
 - 6 LANDING CROSS TUBE - 2" x 2" x 16 GA. SQUARE TUBE.
 - 7 METAL DECK-12 GA. STEEL DECK NON-SLIP NON-SKID FINISH SHALL BE AMCO GRIP II BY AMERICAN CHEM CO. OR EQUIVALENT APP. IN ADVANCE & IN WRITING BY OWNER.
 - 8 ADJUSTABLE LEGS - 1-1/4" x 1-1/4" x 16 GA. SQUARE TUBE WITH 3" x 6" x 1/4" THICK BASE PLATE WELDED TO LEG. BASE PLATE TO HAVE (2) 3/8" HOLES FOR 1/4" LAS BOLTS FOR HOOD OR ATTACH PLATE TO CONCRETE WITH HELIX KNUCK BOLT 1/2" DIA. ALUMINUM 6061-T6 1/2" DIA. PER ANCHORING/1050 NO. 4827 OR EQ. FINISHING AT 45 DEGREE.
 - 9 SUPPORT PLATE - 1-1/4" x 1/8" THICK PLATE.
 - 10 WHEELCHAIR RAIL - 1" x 1" SQUARE TUBE-TACK HELDED TO UPRIGHT MEMBERS.
 - 11 3/8" DIA. MACHINE BOLTS.
 - 12 5" x 10" GA. PLATE W/ #8 x 1" HD. SCREWS AT 12" O.C. INTO STRUCTURAL WOOD MEMBERS OR #14 x 1/2" SELF TAP SCREWS AT 12" O.C. INTO STRUCTURAL STEEL MEMBERS.
 - 13 1/2" x 6" SILL PL. 2" x 6" P.THR. USE WOOD PAD ONLY WHEN RAMP IS SET ON GRADE. WHEN RAMP IS SET ON CONCRETE OR AS PAVING, PLATE SETS DIRECTLY ON FINISH SURFACE.
 - 14 SKIRTING
 - 15 MOUNTING PLATE 2-1/4" x 1/4" STL. W/ 1/2" PIECE OF TUBE COPED TO FIT HANDRAIL TUBE DRILL (2) 3/8" HOLES IN MOUNTING PLATE FOR 3/8" x 3" LAS BOLTS FOR ATTACHMENT ENDS AND MAX. 7'-0" O.C.
 - 16 DRIVE 1" DIA. x 15" L. PIPE AT 10° MAX. DRILL SILL PL. 1-1/2" DIA. MAX. HOLE. PIPE MAY BE DRIVEN AT A MAX. OF 45 DEG. ANGLE W/ VERTICAL. (NOT REQUIRED FOR ASPHALT OR CONCRETE)

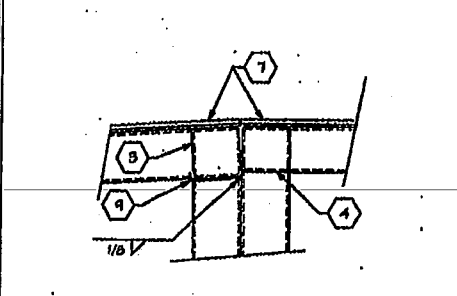


CHECKED

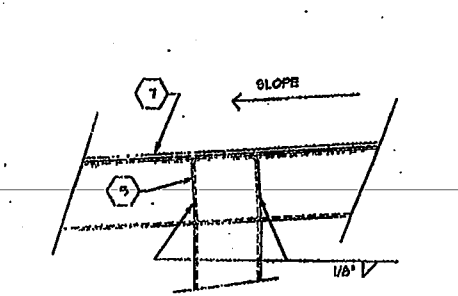
REVISIONS



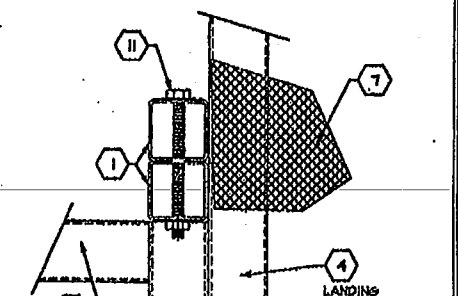
SECTION @ RAMP
SCALE 1/2" = 1'-0"



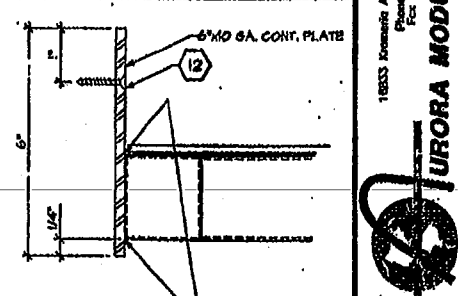
RAMP/LANDING TRANSITION



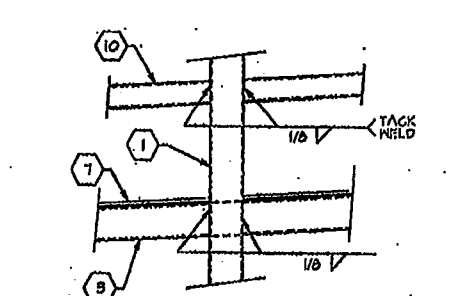
DECK & JOIST CONN.



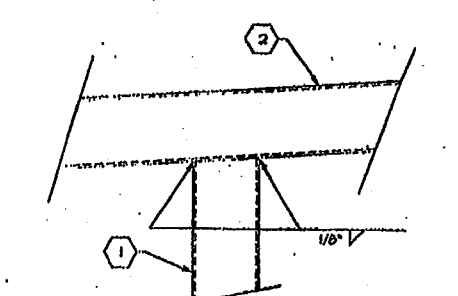
RAMP/LANDING CONN.



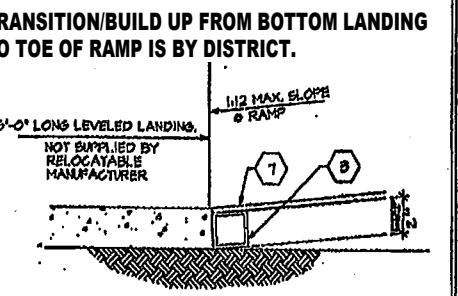
RAMP TO BUILDING



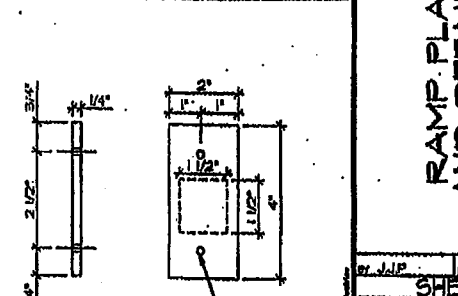
VERTICAL POST CONN.



POST TO HANDRAIL



CONC. LANDING TO RAMP



HANDRAIL MOUNT

1833 Kromer Ave., Riverside, CA 92504
Tel: (951) 512-1111
Fax: (951) 512-1112

TURORA MODULAR INDUSTRIES
RELOCATABLE BRIDGE FOR
WILLIAMS/SCOTEMAN GROUP

RAMP PLAN AND DETAILS

APL 63877
 6/19/76

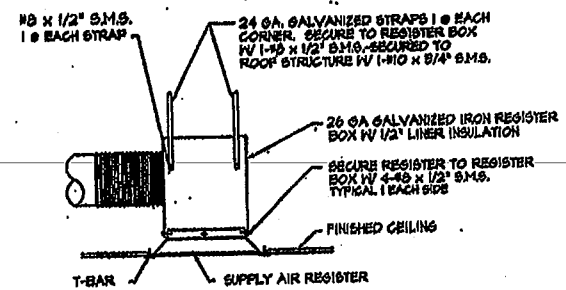
EQUIPMENT & MATERIAL SCHEDULE



BARD MODEL #442-A10 WALL MOUNT HEAT PMP
 3100 BTUH COOLING, S.E.R. = 100
 2100 BTUH HEATING, H.E.P. = 6.50
 1400 CFM @ 27" S.P. HT. = 510 LBS.
 300/350V T.P.H. @ 27", MAX. P.L.A. = 26.2 AMPS.
 MAX. FUSE = 60 AMP.
 WITH COMMERCIAL ROOM VENTILATOR

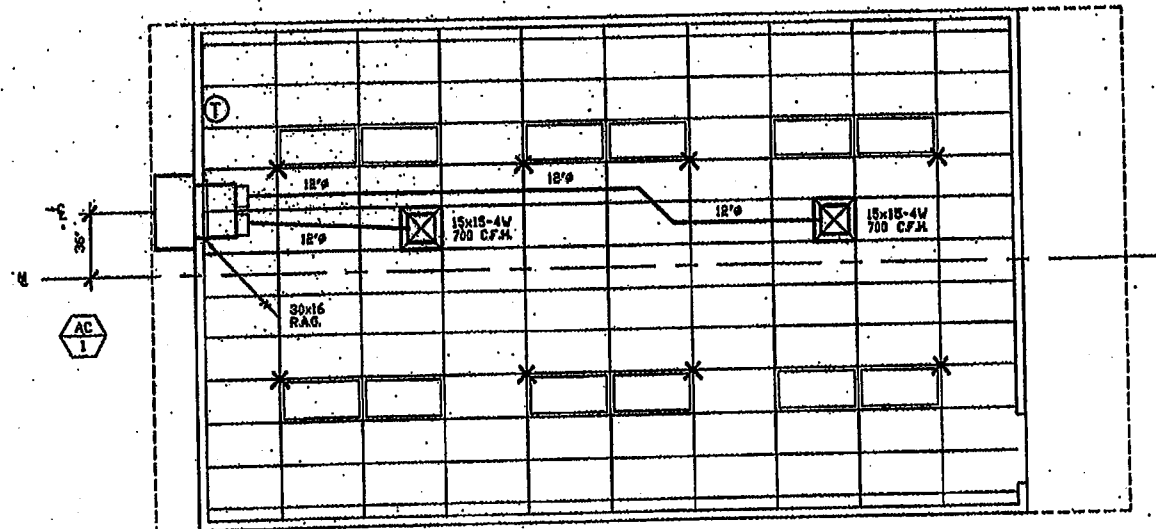
SUPPLY FLEX: 24 GA. GALVANIZED IRON SHEETS W/ 1" LINER INSULATION
 INTERIOR DUCTWORK: POLYCORB FLEX DUCT CLASS I UL-181 W/ TAPED COLLARS ON BOTH ENDS
 REGISTER BOXES: 24 GA. GALVANIZED IRON SHEETS W/ 1/2" LINER INSULATION
 SUPPLY AIR REGISTERS: KRUEGER 19200-F23' SERIES (MINIMUM SIZE 15X15)
 RETURN AIR GRILLES: METALAIR TR' SERIES
 THERMOSTAT: WHITE RODGER #1F42 W/ CLEAR FACE GUARD

ATTACH ALL SUPPLY AND RETURN AIR GRILLES TO BOXES W/ 4 #8 S.M.S. THEN TO ROOF STRUCTURE W/ 4 - 1 1/2" X 24 GA. GALVANIZED STRAPS AT ALL CORNERS.
 ATTACH ALL FLEX DUCT TO ROOF STRUCTURE W/ 1 - 1 1/2" X 24 GA. GALVANIZED STRAP AT INTERVALS NOT TO EXCEED 4'.
 SEAL ALL JOINTS AIR TIGHT.



REGISTER BOX DETAIL

N.T.S.



AIR CONDITIONING FLOOR PLAN

(OPPOSITE HAND) (R.H. DOOR) 1/4" = 1'-0"

CHECKED

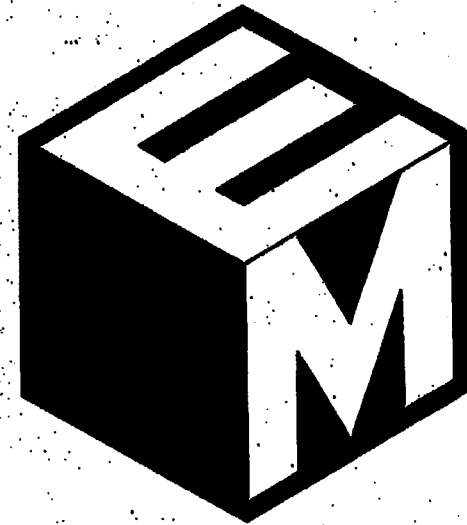
REVISIONS

18333 Kromer's Ave., St. Louis, Mo. 63124
 Phone (800) 789-7156
 Fax (800) 789-0285

TURORA MODULAR INDUSTRIES
 RELIABLE BUILDINGS FOR
 WILLIAMS/SCOTSMAN
 GROUP

AIR CONDITIONING
 FLOOR PLAN

3767
 7/20/76
 SHEET



ELITE MODULAR WOOD & CONCRETE FOUNDATIONS PC

ELITE MODULAR LEASING & SALES, INC.
P.O. BOX 78447 CORONA CA 92877
PHONE: 951-422-2500 FAX: 951-943-3074

NOTE: BELOW STATEMENT APPLICABLE
AST VALUE, AREA ONLY.

**FOUNDATION PC TO BE COMPLIANT WITH
WILD / URBAN INTERFACE ZONE (WUI)**

- EXTERIOR UNDER FLOOR VENTS TO BE FULLY COVERED WITH CORROSION RESISTANT OPENING & NO LESS THAN 1/16", BUT NO MORE THAN 1/8" IN SIZE PER CBC 706A
- EXTERIOR WALLS MUST BE COMPRISED OF NON-COMBUSTIBLE MATERIAL PER CBC 707A
- THE SKIRTING BETWEEN THE FLOOR AND THE GRADE MUST BE CONSTRUCTED OF NON-COMBUSTIBLE MATERIAL PER CBC 707A.

NOTE: SEE DETAILS 6, 7, 8 & 9 ON SHEET DWF-01 FOR (WUI) DETAIL REFERENCES

SHEET INDEX

SHT NO.	COVER PAGE
CP	
WF-01	WOOD FOUNDATION PLAN - 24' x 42' (SUSP. SLAB)
WF-02	WOOD FOUNDATION PLAN - 24' x 42' (SUSP. SLAB)
WF-03	WOOD FOUNDATION PLAN - 24' x 42' (SUSP. SLAB)
WF-04	WOOD FOUNDATION PLAN - 24' x 42' (SUSP. SLAB)
WF-05	WOOD FOUNDATION PLAN - 24' x 42' (SUSP. SLAB)
WF-06	WOOD FOUNDATION PLAN - 24' x 42' (SUSP. SLAB)
WF-07	WOOD FOUNDATION PLAN - 24' x 42' (SUSP. SLAB)
WF-08	WOOD FOUNDATION PLAN - 24' x 42' (SUSP. SLAB)
WF-09	WOOD FOUNDATION PLAN - 24' x 42' (SUSP. SLAB)
WF-10	WOOD FOUNDATION PLAN - 24' x 42' (SUSP. SLAB)
WF-11	WOOD FOUNDATION PLAN - 24' x 42' (SUSP. SLAB)
WF-12	WOOD FOUNDATION PLAN - 24' x 42' (SUSP. SLAB)
WF-13	WOOD FOUNDATION PLAN - 24' x 42' (SUSP. SLAB)
WF-14	WOOD FOUNDATION PLAN - 24' x 42' (SUSP. SLAB)
WF-15	WOOD FOUNDATION PLAN - 24' x 42' (SUSP. SLAB)
WF-16	WOOD FOUNDATION PLAN - 24' x 42' (SUSP. SLAB)
WF-17	WOOD FOUNDATION PLAN - 24' x 42' (SUSP. SLAB)
WF-18	WOOD FOUNDATION PLAN - 24' x 42' (SUSP. SLAB)
WF-19	WOOD FOUNDATION PLAN - 24' x 42' (SUSP. SLAB)
WF-20	WOOD FOUNDATION PLAN - 24' x 42' (SUSP. SLAB)
WF-21	WOOD FOUNDATION PLAN - 24' x 42' (SUSP. SLAB)
WF-22	WOOD FOUNDATION PLAN - 24' x 42' (SUSP. SLAB)
WF-23	WOOD FOUNDATION PLAN - 24' x 42' (SUSP. SLAB)
WF-24	WOOD FOUNDATION PLAN - 24' x 42' (SUSP. SLAB)
WF-25	WOOD FOUNDATION PLAN - 24' x 42' (SUSP. SLAB)
WF-26	WOOD FOUNDATION PLAN - 24' x 42' (SUSP. SLAB)
WF-27	WOOD FOUNDATION PLAN - 24' x 42' (SUSP. SLAB)
WF-28	WOOD FOUNDATION PLAN - 24' x 42' (SUSP. SLAB)
WF-29	WOOD FOUNDATION PLAN - 24' x 42' (SUSP. SLAB)
WF-30	WOOD FOUNDATION PLAN - 24' x 42' (SUSP. SLAB)
WF-31	WOOD FOUNDATION PLAN - 24' x 42' (SUSP. SLAB)
WF-32	WOOD FOUNDATION PLAN - 24' x 42' (SUSP. SLAB)
WF-33	WOOD FOUNDATION PLAN - 24' x 42' (SUSP. SLAB)
WF-34	WOOD FOUNDATION PLAN - 24' x 42' (SUSP. SLAB)
WF-35	WOOD FOUNDATION PLAN - 24' x 42' (SUSP. SLAB)
WF-36	WOOD FOUNDATION PLAN - 24' x 42' (SUSP. SLAB)
WF-37	WOOD FOUNDATION PLAN - 24' x 42' (SUSP. SLAB)
WF-38	WOOD FOUNDATION PLAN - 24' x 42' (SUSP. SLAB)
WF-39	WOOD FOUNDATION PLAN - 24' x 42' (SUSP. SLAB)
WF-40	WOOD FOUNDATION PLAN - 24' x 42' (SUSP. SLAB)
WF-41	WOOD FOUNDATION PLAN - 24' x 42' (SUSP. SLAB)
WF-42	WOOD FOUNDATION PLAN - 24' x 42' (SUSP. SLAB)
WF-43	WOOD FOUNDATION PLAN - 24' x 42' (SUSP. SLAB)
WF-44	WOOD FOUNDATION PLAN - 24' x 42' (SUSP. SLAB)
WF-45	WOOD FOUNDATION PLAN - 24' x 42' (SUSP. SLAB)
WF-46	WOOD FOUNDATION PLAN - 24' x 42' (SUSP. SLAB)
WF-47	WOOD FOUNDATION PLAN - 24' x 42' (SUSP. SLAB)
WF-48	WOOD FOUNDATION PLAN - 24' x 42' (SUSP. SLAB)
WF-49	WOOD FOUNDATION PLAN - 24' x 42' (SUSP. SLAB)
WF-50	WOOD FOUNDATION PLAN - 24' x 42' (SUSP. SLAB)
WF-51	WOOD FOUNDATION PLAN - 24' x 42' (SUSP. SLAB)
WF-52	WOOD FOUNDATION PLAN - 24' x 42' (SUSP. SLAB)
WF-53	WOOD FOUNDATION PLAN - 24' x 42' (SUSP. SLAB)
WF-54	WOOD FOUNDATION PLAN - 24' x 42' (SUSP. SLAB)
WF-55	WOOD FOUNDATION PLAN - 24' x 42' (SUSP. SLAB)
WF-56	WOOD FOUNDATION PLAN - 24' x 42' (SUSP. SLAB)
WF-57	WOOD FOUNDATION PLAN - 24' x 42' (SUSP. SLAB)
WF-58	WOOD FOUNDATION PLAN - 24' x 42' (SUSP. SLAB)
WF-59	WOOD FOUNDATION PLAN - 24' x 42' (SUSP. SLAB)
WF-60	WOOD FOUNDATION PLAN - 24' x 42' (SUSP. SLAB)

CONCRETE FOUNDATION

CFB-01	STRUCTURAL SPECIFICATIONS - CONCRETE FOUNDATIONS
CFB-02	CONCRETE FOUNDATION PLAN - ABOVE GRADE - WOOD FLOOR
CFB-03	CONCRETE FOUNDATION PLAN - ABOVE GRADE - CONCRETE FLOOR
CFB-04	CONCRETE FOUNDATION PLAN - ABOVE GRADE
CFB-05	CONCRETE FOUNDATION PLAN - BELOW GRADE - WOOD FLOOR
CFB-06	CONCRETE FOUNDATION PLAN - BELOW GRADE - CONCRETE FLOOR
CFB-07	CONCRETE FOUNDATION DETAILS - BELOW GRADE
CFB-08	FOUNDATION DETAILS - CONCRETE

BELOW LISTED PC NUMBERS ARE THOSE APPLICABLE FOR USE UNDER PRESENTED STOCKPILE(S).

BUILDING DATA 24'x40' RIGID FRAME

PC#	DATE	SIZE	FLOORLOAD	BLDG MFG
PC 770	08/14/1991	24x40	50x200	MODTECH
PC 771	09/18/1990	24x40	50	MODTECH
PC 772	09/18/1990	24x40	50	MODTECH
PC 773	11/26/1990	24x40	50	MODTECH
PC 774	11/26/1991	24x40	50x250	MODTECH
PC 775	03/19/1992	24x40	50	MODTECH
PC 776	09/19/1992	24x40	50	MODTECH
PC 777	09/19/1992	24x40	50	MODTECH
PC 778	09/19/1992	24x40	50	MODTECH
PC 779	11/18/1992	24x40	50x200	MODTECH
PC 780	03/18/1993	24x40	50	MODTECH
PC 781	03/18/1993	24x40	50x200	MODTECH
PC 782	03/18/1993	24x40	50x200	MODTECH
PC 783	03/18/1993	24x40	50x200	MODTECH
PC 784	03/18/1993	24x40	50	MODTECH
PC 785	03/18/1993	24x40	50	MODTECH
PC 786	03/18/1993	24x40	50x200	MODTECH
PC 787	03/18/1993	24x40	50	MODTECH
PC 788	03/18/1993	24x40	50	MODTECH
PC 789	03/18/1993	24x40	50x200	MODTECH
PC 790	03/18/1993	24x40	50	MODTECH
PC 791	03/18/1993	24x40	50	MODTECH
PC 792	03/18/1993	24x40	50	MODTECH
PC 793	03/18/1993	24x40	50	MODTECH
PC 794	03/18/1993	24x40	50	MODTECH
PC 795	03/18/1993	24x40	50	MODTECH
PC 796	03/18/1993	24x40	50	MODTECH
PC 797	03/18/1993	24x40	50	MODTECH
PC 798	03/18/1993	24x40	50	MODTECH
PC 799	03/18/1993	24x40	50	MODTECH
PC 800	03/18/1993	24x40	50	MODTECH
PC 801	03/18/1993	24x40	50	MODTECH
PC 802	03/18/1993	24x40	50	MODTECH
PC 803	03/18/1993	24x40	50	MODTECH
PC 804	03/18/1993	24x40	50	MODTECH
PC 805	03/18/1993	24x40	50	MODTECH
PC 806	03/18/1993	24x40	50	MODTECH
PC 807	03/18/1993	24x40	50	MODTECH
PC 808	03/18/1993	24x40	50	MODTECH
PC 809	03/18/1993	24x40	50	MODTECH
PC 810	03/18/1993	24x40	50	MODTECH
PC 811	03/18/1993	24x40	50	MODTECH
PC 812	03/18/1993	24x40	50	MODTECH
PC 813	03/18/1993	24x40	50	MODTECH
PC 814	03/18/1993	24x40	50	MODTECH
PC 815	03/18/1993	24x40	50	MODTECH
PC 816	03/18/1993	24x40	50	MODTECH
PC 817	03/18/1993	24x40	50	MODTECH
PC 818	03/18/1993	24x40	50	MODTECH
PC 819	03/18/1993	24x40	50	MODTECH
PC 820	03/18/1993	24x40	50	MODTECH
PC 821	03/18/1993	24x40	50	MODTECH
PC 822	03/18/1993	24x40	50	MODTECH
PC 823	03/18/1993	24x40	50	MODTECH
PC 824	03/18/1993	24x40	50	MODTECH
PC 825	03/18/1993	24x40	50	MODTECH
PC 826	03/18/1993	24x40	50	MODTECH
PC 827	03/18/1993	24x40	50	MODTECH
PC 828	03/18/1993	24x40	50	MODTECH
PC 829	03/18/1993	24x40	50	MODTECH
PC 830	03/18/1993	24x40	50	MODTECH
PC 831	03/18/1993	24x40	50	MODTECH
PC 832	03/18/1993	24x40	50	MODTECH
PC 833	03/18/1993	24x40	50	MODTECH
PC 834	03/18/1993	24x40	50	MODTECH
PC 835	03/18/1993	24x40	50	MODTECH
PC 836	03/18/1993	24x40	50	MODTECH
PC 837	03/18/1993	24x40	50	MODTECH
PC 838	03/18/1993	24x40	50	MODTECH
PC 839	03/18/1993	24x40	50	MODTECH
PC 840	03/18/1993	24x40	50	MODTECH
PC 841	03/18/1993	24x40	50	MODTECH
PC 842	03/18/1993	24x40	50	MODTECH
PC 843	03/18/1993	24x40	50	MODTECH
PC 844	03/18/1993	24x40	50	MODTECH
PC 845	03/18/1993	24x40	50	MODTECH
PC 846	03/18/1993	24x40	50	MODTECH
PC 847	03/18/1993	24x40	50	MODTECH
PC 848	03/18/1993	24x40	50	MODTECH
PC 849	03/18/1993	24x40	50	MODTECH
PC 850	03/18/1993	24x40	50	MODTECH

BUILDING DATA 24'x40' RIGID FRAME

PC#	DATE	SIZE	FLOORLOAD	BLDG MFG
PC 779	11/08/1991	24x40	70	MODTECH
PC 355	11/13/1985	24x40	50x200	MODTECH
PC 356	07/18/1987	24x40	50x200	MODTECH
PC 0410209	10/07/1993	24x40	50x200	MODTECH
PC 10216	09/12/2001	24x40	50	MODTECH
PC 10218	09/12/2001	24x40	50	MODTECH
PC 10219	09/12/2001	24x40	50x200	MODTECH
PC 04101	07/18/2003	24x40	50x200	MODTECH
PC 10218	09/12/2001	24x40	100	MODTECH
PC 779	08/14/1991	24x40	50x200	MODTECH
PC 851	03/18/1993	24x40	50x200	MODTECH
PC 852	03/18/1993	24x40	50x200	MODTECH

BUILDING DATA 24'x40' RIGID FRAME

PC#	DATE	SIZE	FLOORLOAD	BLDG MFG
PC 779	11/08/1991	24x40	100	MODTECH
PC 779	11/08/1991	24x40	70	MODTECH
PC 243	02/04/1993	48x40	50x100	MODTECH
PC 256	10/22/1998	48x40	50x100	MODTECH
PC 10216	09/12/2001	24x40	50x200	MODTECH
PC 10218	09/12/2001	24x40	50x200	MODTECH
PC 10219	09/12/2001	24x40	50x200	MODTECH
PC 779	08/14/1991	24x40	50x200	MODTECH
PC 851	03/18/1993	24x40	50x200	MODTECH
PC 852	03/18/1993	24x40	50x200	MODTECH

BUILDING DATA (EXPANDABLE BLDG SIZES) RIGID FRAME

PC#	DATE	SIZE	FLOORLOAD	BLDG MFG
PC 0410123	09/10/2003	24-144x40	100x200x200	MODTECH
PC 0410232	02/19/2004	24-144x40	100x200x200	SILVER CREEK
PC 0410233	02/19/2004	24-144x40	100x200x200	SILVER CREEK
PC 0410234	02/19/2004	24-144x40	100x200x200	SILVER CREEK
PC 0410235	02/19/2004	24-144x40	100x200x200	SILVER CREEK
PC 352	02/19/1997	24-144x40	50x200	MODTECH
PC 0410195	06/16/1999	24-144x40	50x200	AURORA
PC 333	08/14/1997	24-144x40	50x200	MSI
PC 0410196	07/02/2003	24-144x40	50x200	WALDEN

ELITE MODULAR LEASING & SALES, INC.
P.O. BOX 78447
CORONA CA 92877
PHONE: 951-422-2500
FAX: 951-943-3074

THESE DRAWINGS AND ALL MATERIAL CONTAINED HEREIN ARE THE PROPERTY OF ELITE MODULAR LEASING & SALES, INC. (ELITE MODULAR) AND SHALL NOT BE REPRODUCED, COPIED, EITHER WHOLLY OR IN PART, OR BY ANY MEANS, AND SHALL NOT BE USED IN WHOLE OR IN PART TO ASSIST IN THE MARKING OF OR FOR THE PURPOSE OF FABRICATING ANY INFORMATION FOR THE MARKING OF WITHOUT THE FULL WRITTEN CONSENT AND IN WRITING BY ELITE MODULAR, INC. ALL MATERIAL CONTAINED HEREIN AND CONTAINING WITH ELITE MODULAR, INC. SHALL BE THE PROPERTY OF ELITE MODULAR, INC.

PROJECT NAME _____

SHEET TITLE
COVER SHEET

ARCHITECT'S RECORD
DATE RECORDED
NOV 08 2017

PROJECT SPECIFIC STATE AGENCY APPROVAL

ORIGINAL PC# STATE AGENCY APPROVAL
5808 G. Garcia
STATE OF CALIFORNIA
OFFICE OF HAZARDOUS MATERIAL INVESTIGATION SERVICES
04-116392
DATE: *11/13/17*
DRAWN BY: *Y.C.*
DATE: *11/13/17*

REVISIONS

PROJECT NO: _____

DRAWN BY: **Y.C.**

SCALE: **AS NOTED**

DATE: **APRIL 25, 2017**

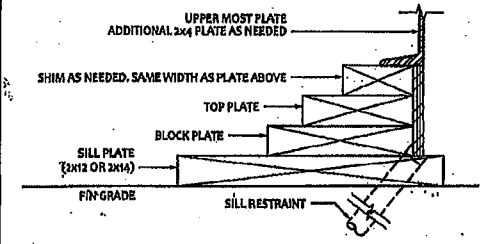
SHEET NUMBER
CP

APPLICABLE CODES

LIST OF 2018 CALIFORNIA CODE OF REGULATIONS

- 2018 CALIFORNIA ADMINISTRATIVE CODE (CAC), PART 1, TITLE 24 C.C.R.
- 2018 CALIFORNIA BUILDING CODE (CBC), PART 2, TITLE 24 C.C.R.
- (2015 INTERNATIONAL BUILDING CODE VOLUMES 1a AND 2016 CALIFORNIA AMENDMENTS)
- 2018 CALIFORNIA ELECTRICAL CODE (CEC), PART 9, TITLE 24 C.C.R.
- (2014 NATIONAL ELECTRICAL CODE AND 2016 CALIFORNIA AMENDMENTS)
- 2018 CALIFORNIA MECHANICAL CODE (CMC), PART 4, TITLE 24 C.C.R.
- (2015 UNIFORM MECHANICAL CODE AND 2016 CALIFORNIA AMENDMENTS)
- 2018 CALIFORNIA PLUMBING CODE (CPC), PART 5, TITLE 24 C.C.R.
- (2015 UNIFORM PLUMBING CODE AND 2016 CALIFORNIA AMENDMENTS)
- 2018 CALIFORNIA ENERGY CODE (CEC), PART 6, TITLE 24 C.C.R.
- 2018 CALIFORNIA FIRE CODE 9, PART 9, TITLE 24 C.C.R.
- (2015 INTERNATIONAL FIRE CODE AND 2016 CALIFORNIA AMENDMENTS)
- 2018 CALIFORNIA GREEN BUILDING STANDARDS CODE, PART 11, TITLE 24 C.C.R.
- 2018 CALIFORNIA REFERENCED STANDARDS, PART 12, TITLE 24 C.C.R.
- TITLE 19 C.C.R., PUBLIC SAFETY, STATE FIRE MARSHAL REGULATIONS.
- 2007 ASME A17.1 (w/1711) / CSA B44-08 (ADDENDA) SAFETY CODE FOR ELEVATORS AND ESCALATORS

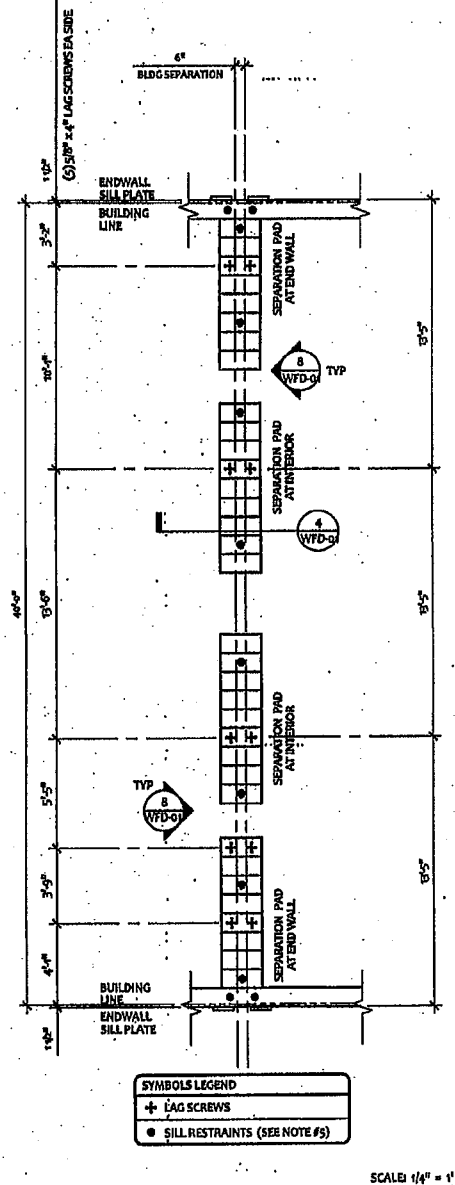
STK A# 66839



FOUNDATION PLATE DESCRIPTION

- BUILDINGS OVER 2160 SF, MUST BE INSTALLED ON A PERMANENT CONCRETE FOUNDATION PER IR 10-1.16 SECTION 4.
- FOUNDATION PLAN HAS A 1/4" ADDED AT EACH MODULINE LINE AND DOES NOT MATCH THE FLOOR PLAN. ADDITIONAL LENGTH ADDED FOR GROWTH THAT IS EXPERIENCED WHEN SETTING MULTIPLE MODULAR FLOORS.
- FOUNDATION VENTS THAT OCCUR UNDER RAMP LANDINGS, PROVIDE AN EQUAL AREA OF SCREENED VENT IN LANDING SKIRT.
- WOOD SILL (FOOTING) PLATES SHALL BE PRESURE TREATED HEM-FIR AND MAY BEAR DIRECTLY ON SOIL OR PAVED SURFACE. GRASS OR TURF SHALL BE CLEARLY TO BARE SOIL UNDER THE ENTIRE AREA OF THE BUILDING BY OTHERS. THE WOOD SILL FOOTING PLATE MAY SUPPORT CONTINUOUS BLOCKING AND SHEATHING SKIRT WHICH NEED NOT BE TREATED.
- SILL RESTRAINT: THE FOUNDATION SHALL BE DESIGNED TO PREVENT SLIDING ON THE SUPPORTING SURFACE BY ATTACHING THE WOOD FOUNDATION PLATES FOR THE BUILDING, RAMPS AND STAIRS TO THE GROUND WITH RESTRAINING DEVICES. AN ACCEPTABLE DESIGN WOULD INCORPORATE ONE-INCH DIAMETER STANDARD WEIGHT (3.315" ACTUAL O.D.) HOT DIPPED GALVANIZED PIPES OR ONE-INCH DIAMETER SOLID STEEL RODS SPACED AT NOT MORE THAN 10'-0" O.C. ONE PIPE/ROD SHALL BE LOCATED A MAXIMUM OF TWO FEET FROM EACH CORNER IN BOTH DIRECTIONS AND A MINIMUM OF TWO PIPES/RODS PER DISCONTINUOUS FOUNDATION STRIP. PIPES SHOULD PENETRATE INTO SOIL, CONCRETE, AND/OR PAVING A MINIMUM OF 6" MEASURED VERTICALLY. ALTERNATE OR EQUIVALENT DESIGNS, WHEN PROVIDED WITH STRUCTURAL CALCULATIONS AND DETAILS, WILL BE SUBMITTED TO DSA FOR REVIEW AND APPROVAL.
- STACKED WOOD MEMBERS FOR FOUNDATIONS AND PRESURE TREATED LUMBER SHALL BE NAILED WITH HOT DIPPED GALVANIZED PER ASTM A-153.
- VENTILATION OPENINGS SHALL BE COVERED FOR EITHER HEIGHT AND WIDTH WITH CORROSION-RESISTANT WIRE MESH, WITH A CLEAR "THROUGH" DIMENSION NOT EXCEEDING 1/8" ACTING AS A VERMIN BARRIER.
- VENTING CALCULATION REQUIREMENTS FOR MULTIPLE BUILDING SETS MUST BE CALCULATED WITH OVERALL SQUARE FOOTAGE INCLUDING SEPARATION.
- FOR FOUNDATION ANCHORAGE ON CONCRETE PAD, SEE DETAIL 15/WFD-01.
- IF OPTIONAL ENDWALL VENTS ARE APPLIED, SILL PLATE AND BLOCK PLATE MUST BE CONTINUOUS. VENT OPENINGS SHALL BE BROKEN ABOVE THE BLOCK PLATE.
- FOR FOUNDATION SPLICE - SEE 15/WFD-01.
- CRAWLSPACE VAPOR RETARDERS (OPTIONAL): THE OPTIONAL TOTAL AREA OF VENTILATION OPENINGS IS PERMITTED TO BE REDUCED TO 1/1500 FACTOR WITH AN APPROVED VAPOR RETARDER MATERIAL PER CBC SECTION 1103.3-2(2).
MATERIALS:
GROUND SURFACE COVERED WITH AN APPROVED VAPOR RETARDER MATERIAL MUST HAVE A PERM RATING OF ONE OR LESS SHOULD BE CONTINUOUS POLYETHYLENE FILM (6 MIL); POOL LINER (PUNCTURE RESISTANT); AND POLYETHYLENE FILM WITH RAT SLAB.
INSTALLATION RECOMMENDATIONS:
OVERLAP JOINTS BY 6 INCHES; TAPE OR SEAL ALL JOINTS; ATTACH VAPOR RETARDER OVER SILL PLATE PER 10/WFD-04 SEAL TO ALL PIERS AND OTHER PENETRATIONS.
- ENDWALL VENTS (IF REQ'D) SHALL BE LOCATED A MIN OF 24" FROM BUILDING CORNERS. MAXIMUM ONE ENDWALL VENT PER 12'-0" MODULE.
- CONCRETE FLOOR LOAD IS INCLUDED IN THE CONCRETE FOUNDATION OPTION FOR FOUNDATION & ANCHORAGE DESIGN. I.E. THERE IS NO CONCRETE FLOOR FOR WOOD FOUNDATION OPTION. THERE IS CONCRETE FLOOR FOR CONCRETE FOUNDATION OPTION.
- IF PARAPET IS HIGHER THAN 10", COMBINATION REQUIRES A 2 X 14" OR 2 X 16" SILL PLATE @ EXTERIOR OF BUILDING.
- 150 PSF FLOOR LIVE LOAD OPTION CANNOT BE USED WITH THE STUCCO WALL OPTION.
- VENTS AT MODULINE FOUNDATIONS. THE MINIMUM CRITERIA REQUIREMENT AS FOLLOWS:
A. VENTS HAVE A MINIMUM OF 2 SILL/BLOCKING PLATES BENEATH.
B. VENTS ARE A MAXIMUM OF 6" LONG x 3" MIN. HIGH.
C. VENTS ARE SPACED A MINIMUM OF 6" APART (EDGE TO EDGE) AND 24" MIN. FROM CORNERS.

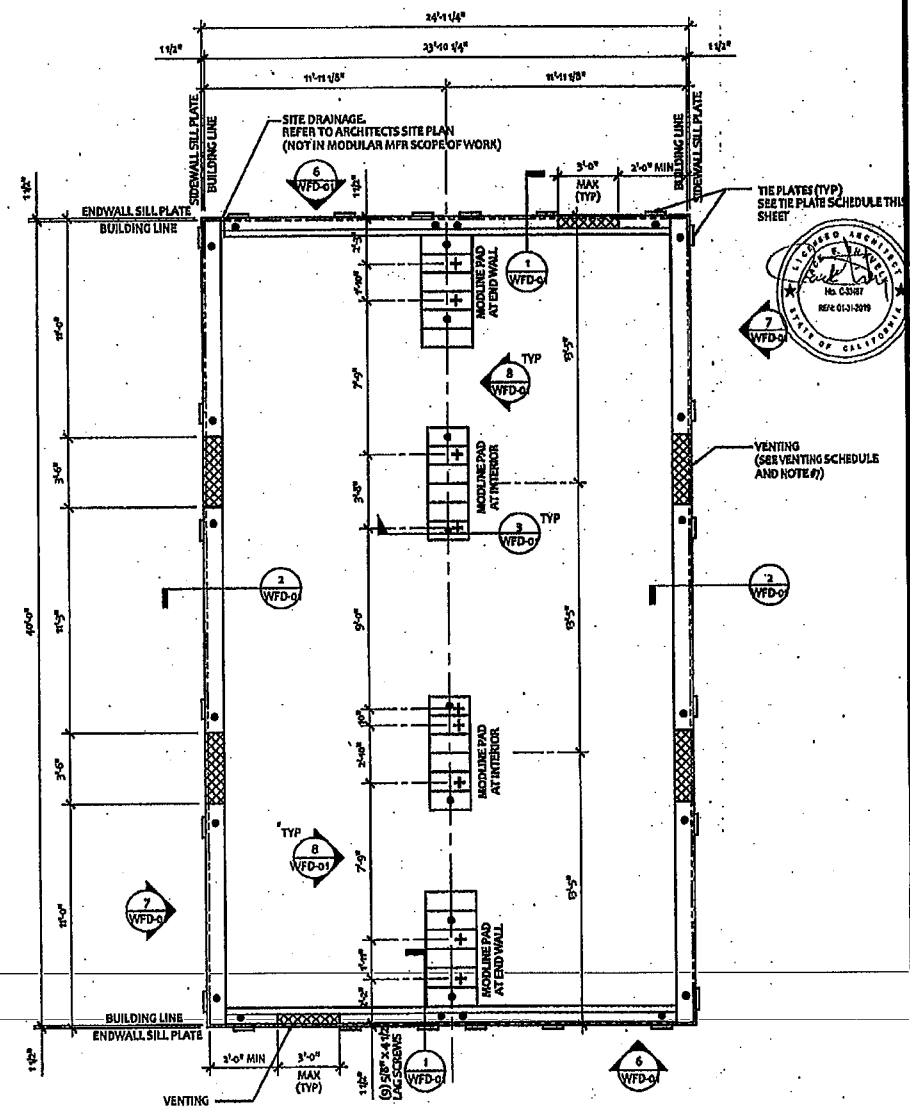
NOTES



FOOTING AT SEPARATION-ONE BUILDING

- 60'-6" x 40' BUILDING: 2420 SF / 150 = 16.13 SF VENT REQ'D
(4) - "A" VENT = 5.25 SF
(10) - "C" VENT = 10.88 SF
16.5 SF TOTAL VENTILATION (> 16.13 SF)
 - 73'-0" x 40' BUILDING: 2920 SF / 150 = 19.46 SF VENT REQ'D
(5) - "A" VENT = 5.25 SF
(12) - "C" VENT = 14.21 SF
19.46 SF TOTAL VENTILATION (> 19.46 SF)
(VAPOR BARRIER REQUIRED)
 - 85'-0" x 40' BUILDING: 3400 SF / 150 = 22.66 SF VENT REQ'D
(6) - "A" VENT = 5.25 SF
(14) - "C" VENT = 17.41 SF
22.66 SF TOTAL VENTILATION (> 22.66 SF)
(VAPOR BARRIER REQUIRED)
 - 97'-6" x 40' BUILDING: 3880 SF / 150 = 25.86 SF VENT REQ'D
(7) - "A" VENT = 5.25 SF
(16) - "C" VENT = 20.61 SF
25.86 SF TOTAL VENTILATION (> 25.86 SF)
(VAPOR BARRIER REQUIRED)
 - 109'-6" x 40' BUILDING: 4380 SF / 150 = 29.2 SF VENT REQ'D
(8) - "A" VENT = 5.25 SF
(18) - "C" VENT = 23.95 SF
29.2 SF TOTAL VENTILATION (> 29.2 SF)
(VAPOR BARRIER REQUIRED)
 - 122'-0" x 40' BUILDING: 4880 SF / 150 = 32.53 SF VENT REQ'D
(8) - "A" VENT = 5.25 SF
(20) - "C" VENT = 27.28 SF
32.53 SF TOTAL VENTILATION (> 32.53 SF)
(VAPOR BARRIER REQUIRED)
- NOTE:**
VENTING REQUIREMENTS MAY BE RE-CALCULATED DEPENDING ON GRADE CONDITIONS ON A PER-JOB BASIS

3 VENTING CALCULATIONS (VARIOUS BLDG. SIZES)



FOUNDATION PLAN.

WOOD FOUNDATION PLATE SCHEDULE - 50 + 15 PSF						
PLATES	END WALL	SIDE WALL	MODULINE PAD AT END WALL	MODULINE PAD AT INTERIOR	SEPARATION PAD AT END WALL ONE BLDG	SEPARATION PAD AT INTERIOR ONE BLDG
ADDITIONAL TOP PLATE (AS NEEDED)	2x4	2x4	2x6	2x6	2x12	2x12
TOP	2x6	2x6	2x8	2x8	2x12	2x12
BLOCK	2x8	2x8	2x10	2x10	2x12	2x12
SILL	2x12 (2x14) ³	2x12 (2x14) ³	(6) 2x12 x 2'-0"	(6) 2x12 x 2'-6"	(7) 2x12 x 2'-0"	(10) 2x12 x 2'-0"

KEY PLAN VENTING SCHEDULE			NAILING SCHEDULE		
VENT "A" (SIDEWALL):	3'-6" x 4'-5" = 1,325 S.F. VENTILATION	VENT OPENING BELOW CONT. UPPER PLATE*	BUILDING SIZE	(2) #6 BOX NAILS PLATE TO PLATE ATTACHMENT BELOW UPPER MOST PLATE	
VENT "B" (ENDWALL):	3'-0" x 3" = 9,75 S.F. VENTILATION	(OPTIONAL AT MULTIPLE BLDG SETS) VENT OPENING ABOVE CONT. SILL AND BLOCK PLATE*	24' x 40'	5" OC AT ENDWALL - 1/P-0.50 12" OC AT SIDEWALL - 2/P-0.50 12" OC AT SEPARATION - 4/P-0.50	
VENT "C" (ENDWALL):	3'-0" x 4 1/2" = 1,325 S.F. VENTILATION	(OPTIONAL AT MULTIPLE BLDG SETS) VENT OPENING ABOVE CONT. SILL AND BLOCK PLATES*	BUILDING SIZE	BUILDING AREA	REQ. VENTING
			24' x 40'	960 SF	8.4 SF (1/150)
					8.4 SF (1/150) SIDE VENTING (5.25 SF TOTAL)
					3'-0" x 4'-5" = (4) 1,325 S.F. TOTAL
					3'-0" x 3" = (2) 975 S.F. TOTAL
					6.75 SF

TIE PLATE SCHEDULE			
BUILDING SIZE	SIDE WALL TIE PLATES	END WALL TIE PLATES	TOTAL NUMBER OF TIE PLATES
24' x 40'	6	6	24

ELITE MODULAR LEASING & SALES, INC.
P.O. BOX 78447
CORONA CA 92877
PHONE: 951-422-3500
FAX: 951-943-3074

THESE DRAWINGS AND ALL MATERIAL CONTAINED HEREIN ARE THE PROPERTY OF ELITE MODULAR LEASING & SALES, INC. (ELITE MODULAR) AND SHALL NOT BE REPRODUCED, COPIED OR OTHERWISE DISPOSED OF DIRECTLY OR INDIRECTLY AND SHALL NOT BE USED IN WHOLE OR IN PART TO ASSIST IN THE MAKING OF OR FOR THE PURPOSE OF FURNISHING ANY INFORMATION FOR THE MAKING OF DRAWINGS, PRINTS, APPARATUS OR PARTS THEREOF WITHOUT THE FULL KNOWLEDGE AND WRITTEN CONSENT OF ELITE MODULAR, INC. ALL PATENTABLE MATERIAL CONTAINED HEREIN AND ORIGINATING WITH ELITE MODULAR, INC. SHALL BE THE PROPERTY OF ELITE MODULAR, INC.

PROJECT NAME:

SHEET TITLE:
WOOD FOUNDATION PLAN
24X40 (50 & 50+15 PSF)

STATE OF CALIFORNIA
DIVISION OF INDUSTRIAL SAFETY
REGISTERED PROFESSIONAL ENGINEER
No. 63387
DATE SIGNED: NOV 08 2017
LICENSE EXPIRES 6-30-18

PROJECT SPECIFIC STATE AGENCY APPROVAL

ORIGINAL PC STATE AGENCY APPROVAL

CHECKED FOR DOCUMENT
APPROVED FOR SUBMITTANCE
DATE: NOV 1 2017

04-116392

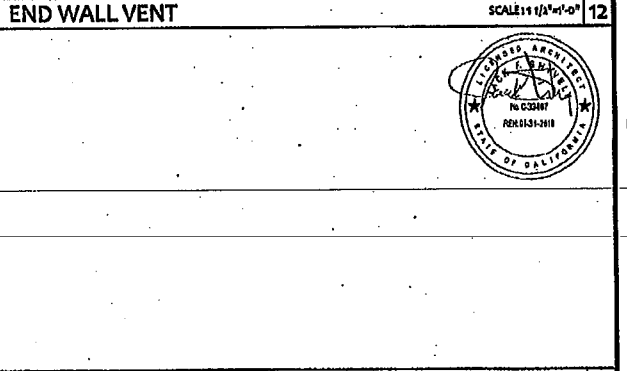
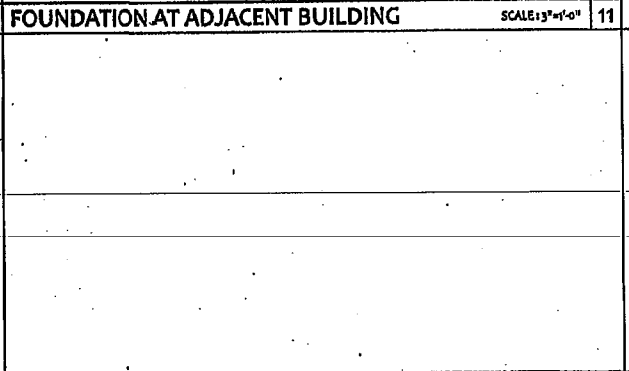
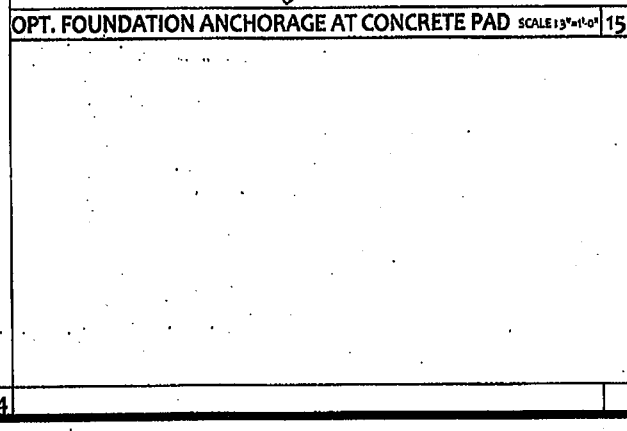
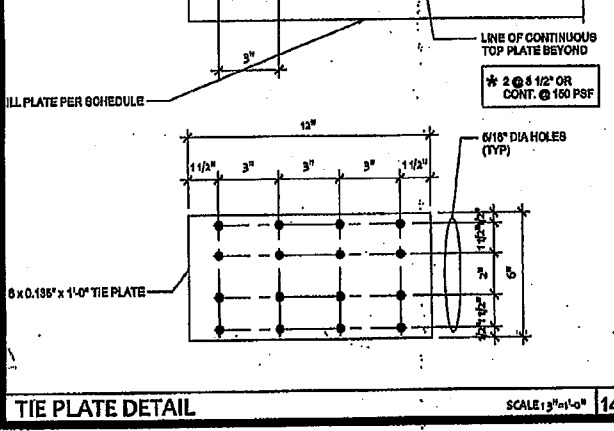
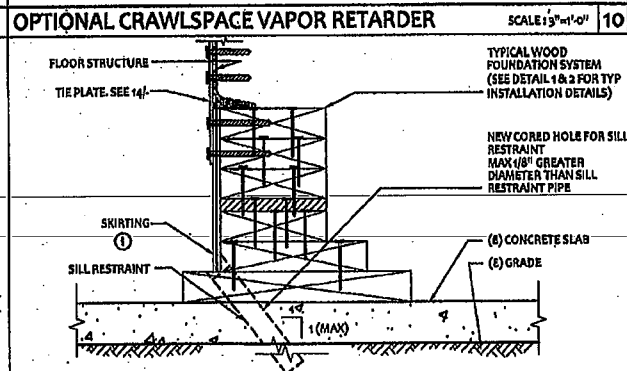
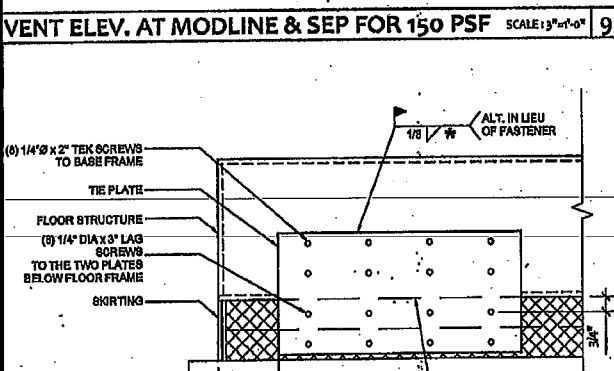
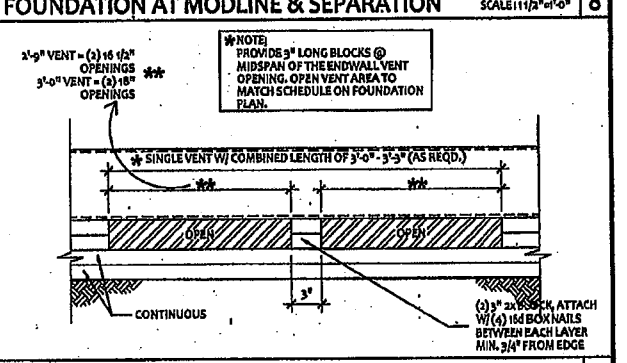
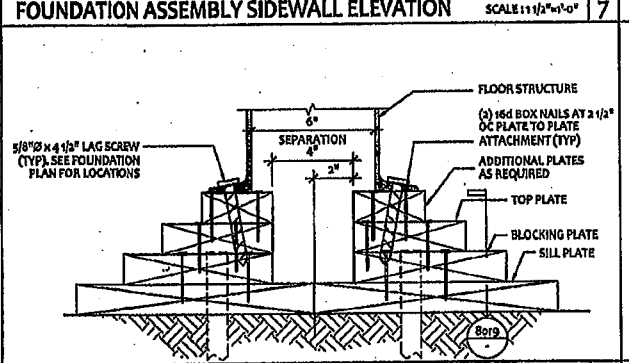
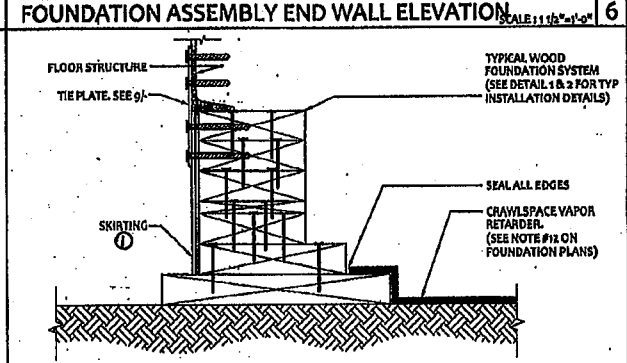
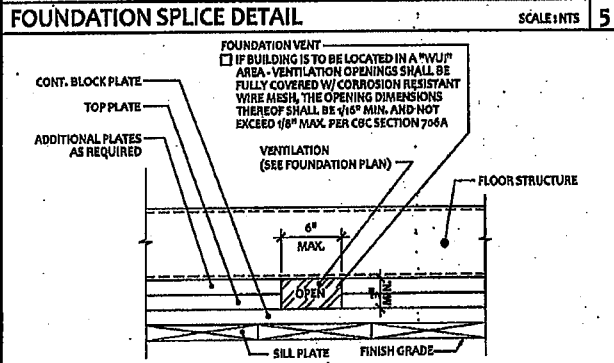
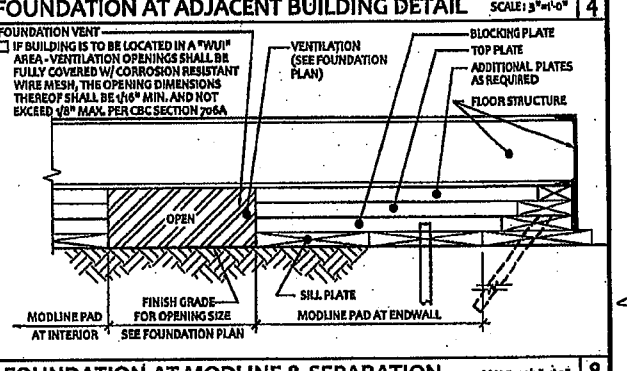
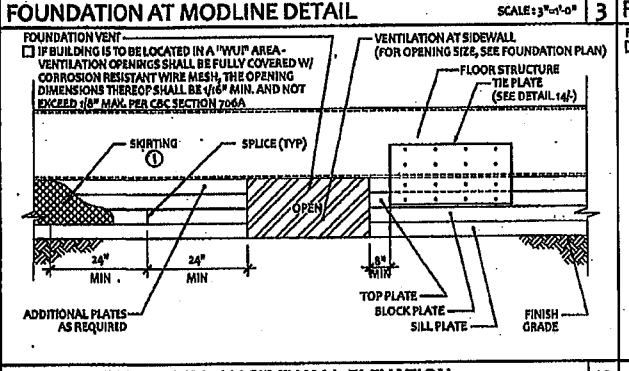
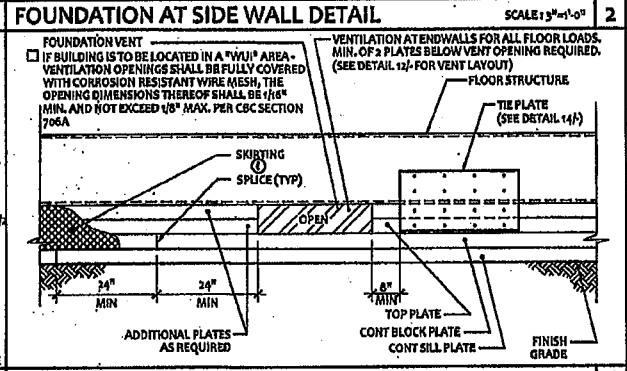
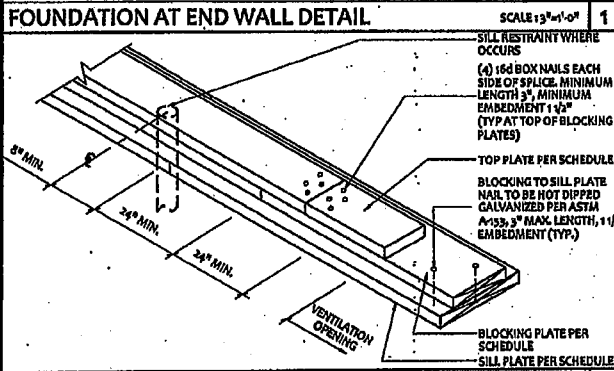
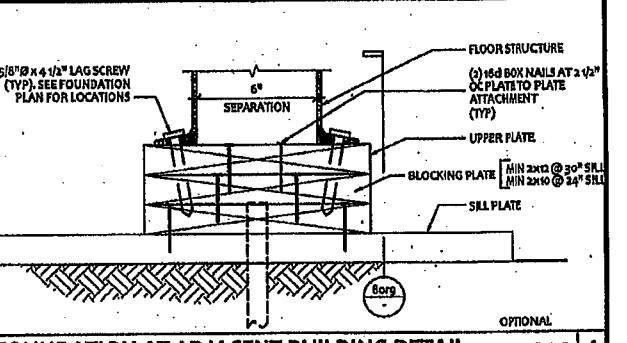
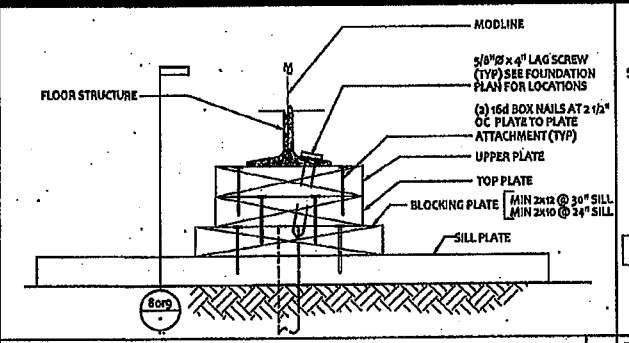
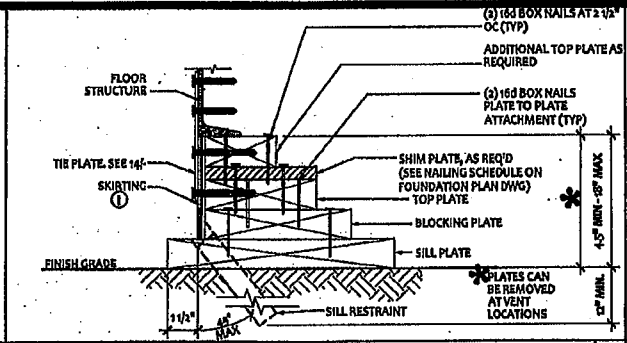
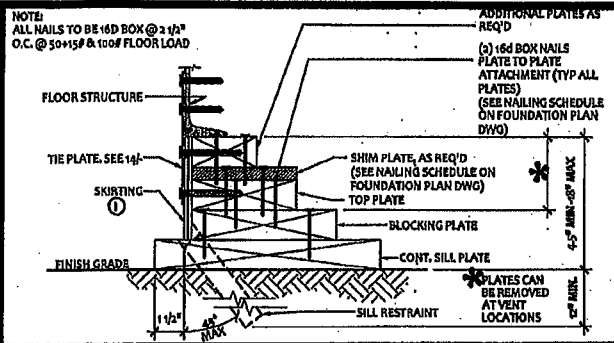
REVISIONS

NO.	DATE	DESCRIPTION

PROJECT NO:
DRAWN BY: Y.C.
SCALE: AS NOTED
DATE: APRIL 25, 2017
SHEET NUMBER
WF-04

ELITE MODULAR LEASING & SALES, INC.
 P.O. BOX 78447
 CORONA CA 92877
 PHONE: 951-422-2500
 FAX: 951-943-3074

THESE DRAWINGS AND ALL MATERIAL CONTAINED HEREIN ARE THE PROPERTY OF ELITE MODULAR LEASING & SALES, INC. (ELITE MODULAR) AND SHALL NOT BE REPRODUCED, COPIED OR OTHERWISE DISPOSED OF DIRECTLY OR INDIRECTLY AND SHALL NOT BE USED IN WHOLE OR IN PART TO ASSIST IN THE MAKING OF OR FOR THE PURPOSE OF FURNISHING ANY INFORMATION FOR THE MAKING OF DRAWINGS, PRINTS, APPARATUS OR PARTS THEREOF WITHOUT THE FULL KNOWLEDGE AND WRITTEN CONSENT OF ELITE MODULAR, INC. ALL PATENTABLE MATERIAL CONTAINED HEREIN AND CONTINUING WITH ELITE MODULAR, INC. SHALL BE THE PROPERTY OF ELITE MODULAR, INC.



PROJECT NAME

SHEET TITLE
FOUNDATION DETAILS WOOD

DATE SIGNED
 NOV 08 2017
 LICENSE EXPIRES 8-31-19

PROJECT SPECIFIC STATE AGENCY APPROVAL

ORIGINAL PC STATE AGENCY APPROVAL

IDENTIFICATION STAMP
 DIV. OF STATE AGENCY
 OFFICE OF REGULATION & SERVICES
 04-116392
 DATE: NOV 1 1 2017

REVISIONS

PROJECT NO:
 DRAWN BY: Y.C.
 SCALE: AS NOTED
 DATE: APRIL 25, 2017
 SHEET NUMBER
WFD-01