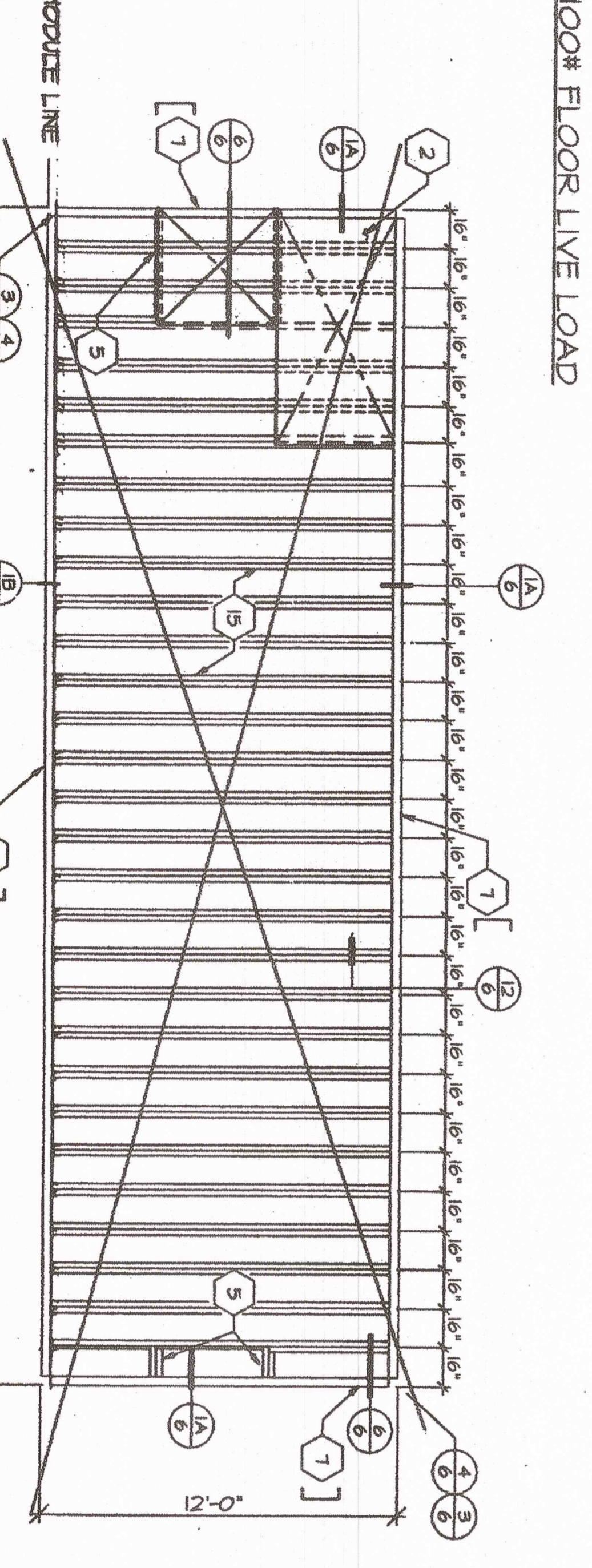
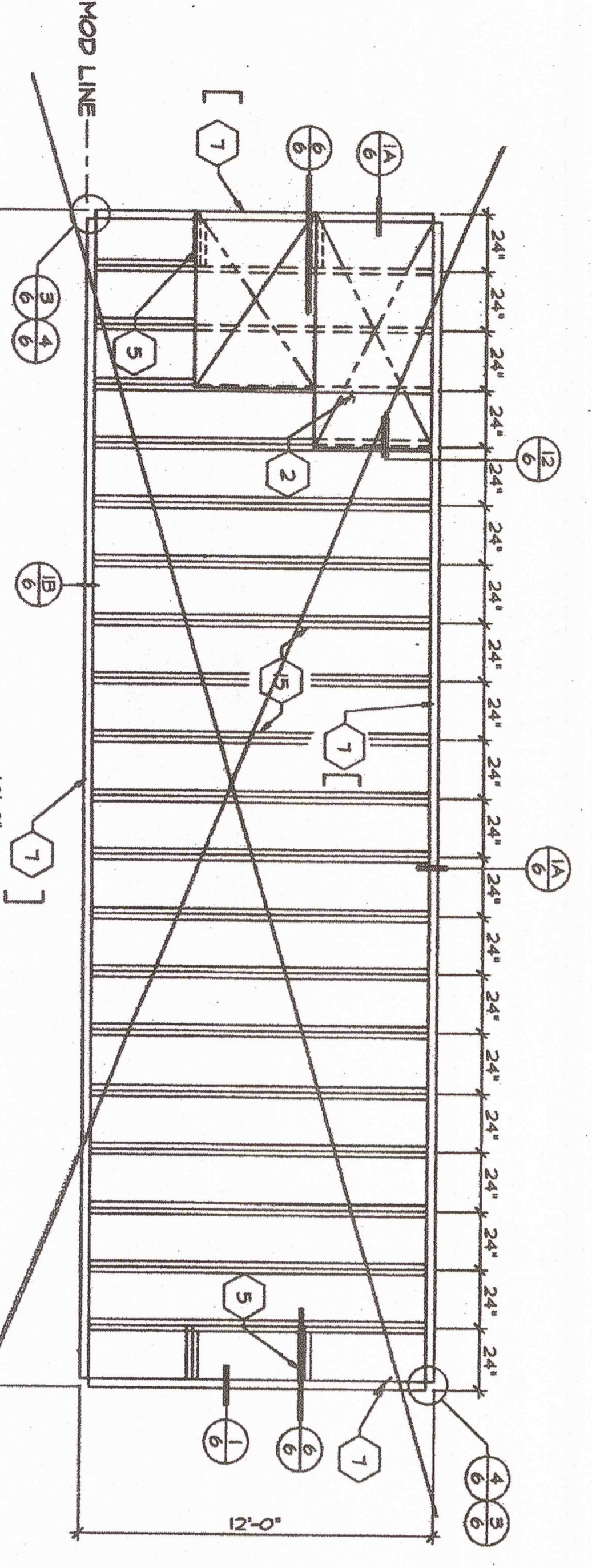
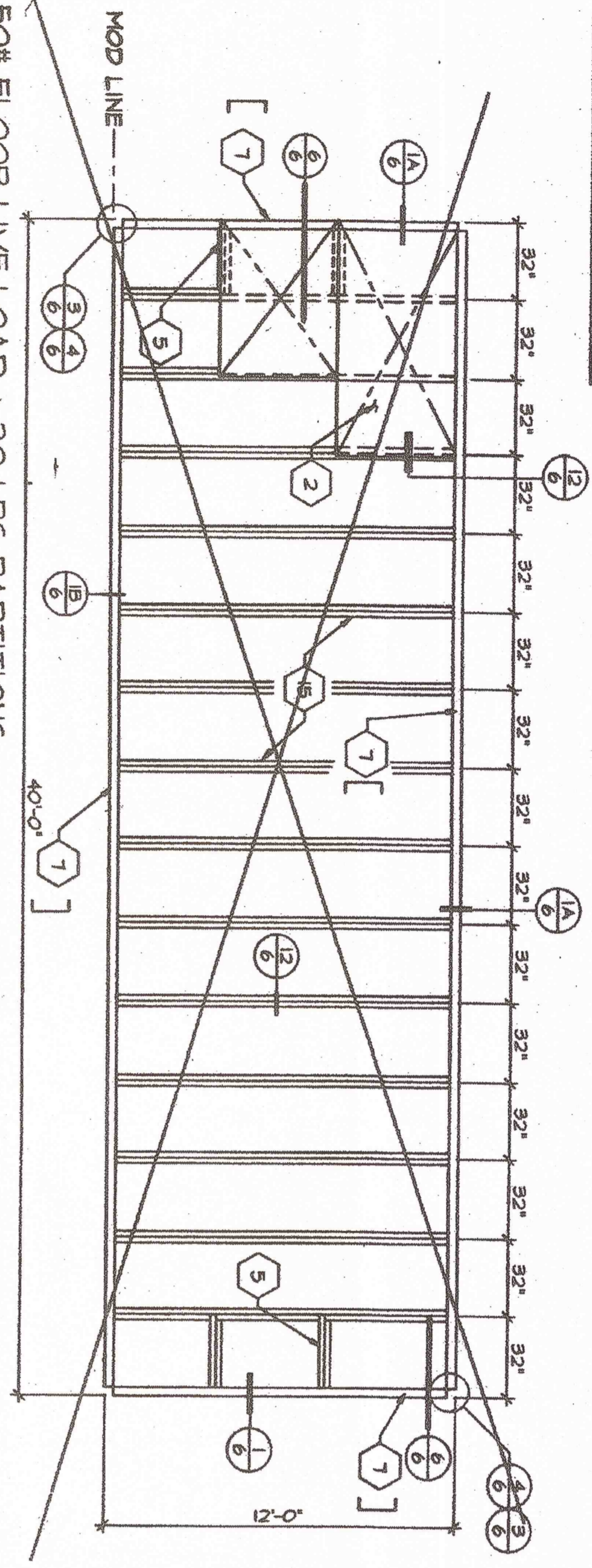
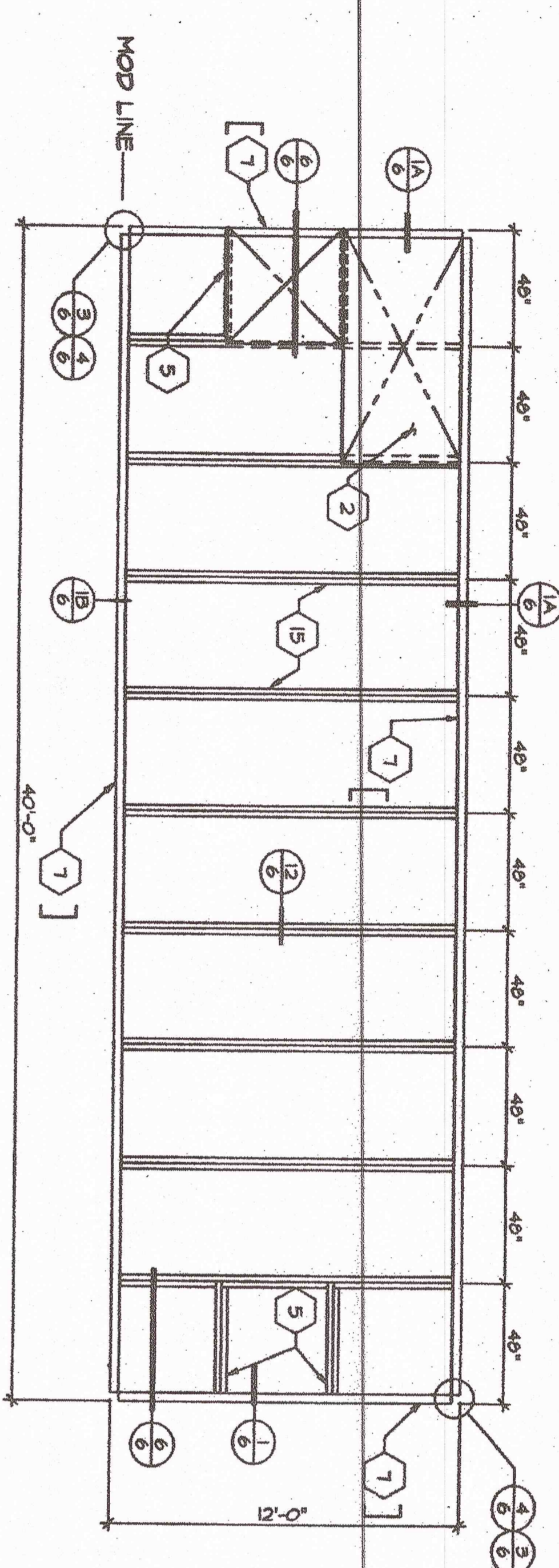
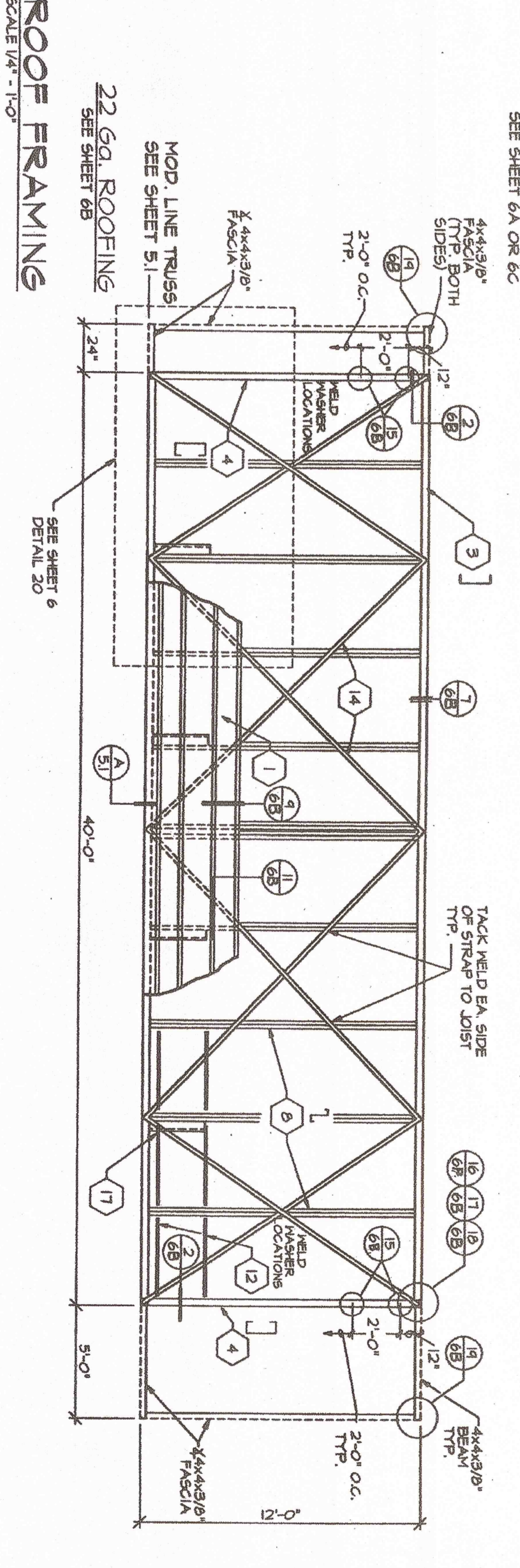
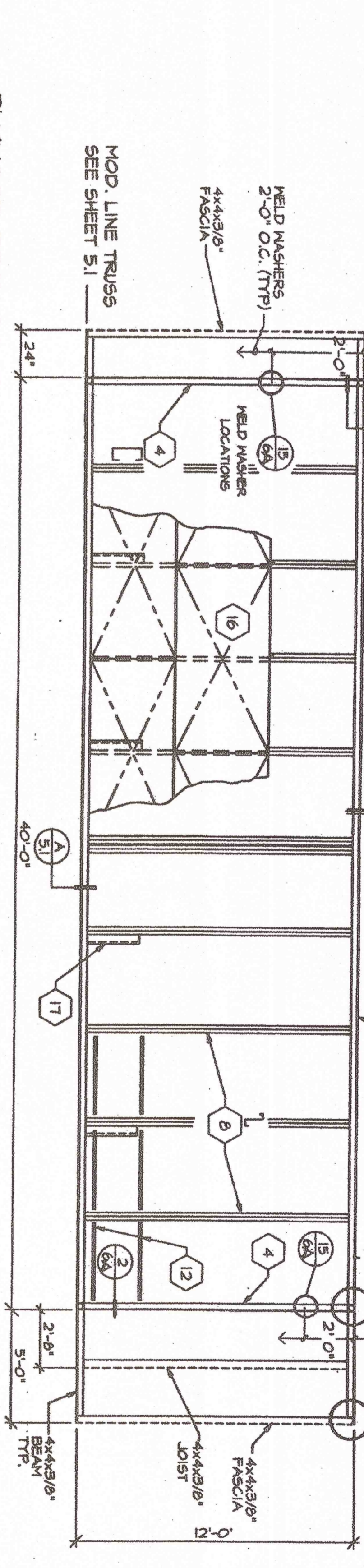
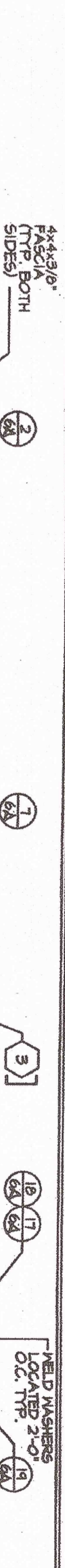


**KEYNOTES**

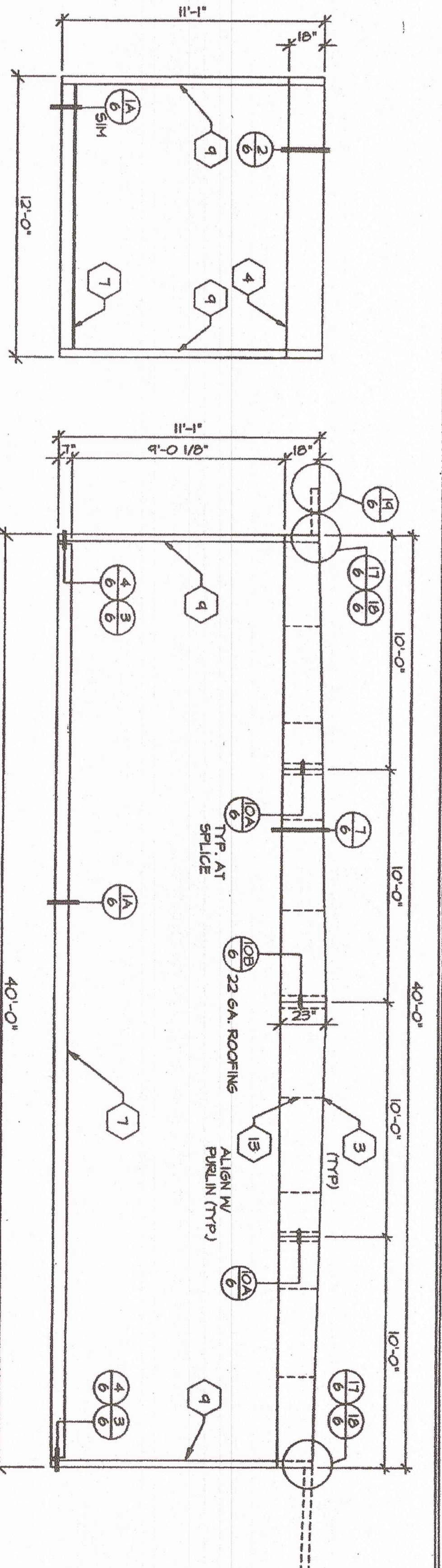
- 1 STEEL ROOF BEAM - 22 GA. STEEL FORMED DECK WITH 3" STANDING SEAM. SEE NOTE 1 SHIT ON FOR ATTACH FOR ATTACH
- 2 PLYWOOD FLOOR SHEATHING - 1 1/8" A.P.A. STUD-1 FOR ATTACH. F.S. 1-289. SEE NOTE 2 SHIT ON OR 68
- 3 [ 18/23/18x3 1/2"x10 GA.
- 4 [ 18"x3 1/2"x12 GA. RIG. STEEL ROOF HEADER.
- 5 L 7"x 11 GA. STEEL BLOCK @ 48" O.C.
- 6 NOT USED
- 7 L 7"x 4.0 LB PERIFERER FLOOR FRAME.
- 8 L 6"x 14 GA. STEEL ROOF JOIST @ 48" O.C.
- 9 STEEL COLUMN - 3 1/2"x3 1/2"x3/16" TUBE.
- 10 NOT USED
- 11 WELD WAGERS FOR CEILING GRID - TYP. BOTH SIDES SEE DETAIL 1516.
- 12 STRAP TACKED TO UNDERSIDE OF JOIST @ 24" O.C.
- 13 3/16" FULL HEIGHT STIFFENER AT PURLIN LOCATIONS.
- 14 EACH END TO ROOF BEAM/HEADER TYP.
- 15 L 7"x 11 GA. STEEL FLOOR JOIST @ SEE FRAMING PLAN FOR FLOOR JOIST SPACING
- 16 PLYWOOD ROOF SHEATHING 3/4" C-D INT WITH EXT. GLE 48"x24" O.C. LONG EDGES
- 17 1 1/2"x1 1/2"x3/16" BRUCE (SEE SHIT. S1 DET 10)



**125# FLOOR LIVE LOAD FLOOR FRAMING**  
SCALE 1/4" = 1'-0"



**ROOF FRAMING**  
SCALE 1/4" = 1'-0"



**TYPICAL ENDWALL**  
SCALE 1/4" = 1'-0"

**OUTSIDE ELEVATION**  
SCALE 1/4" = 1'-0"

DSA.

REVISED

IDENTIFICATION STAMP  
PROJECT NO. 5-10-54  
DATE 5-10-54  
DRAWN BY [Signature]  
CHECKED BY [Signature]

U3 110412  
FIS SS JB  
DATE SEP. 18. 87  
CHECKED

REVISIONS

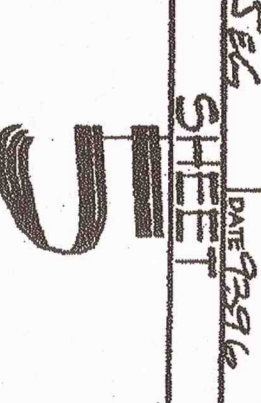


16833 Krameria Ave., Riverside, CA 92504  
Phone (909) 789-7186  
Fax (909) 789-0263

**TURORA MODULAR INDUSTRIES**

RELOCATABLE BUILDING FOR  
WILLIAMS/SCOTSMAN GROUP

**FLOOR FRAMING,  
ROOF FRAMING,  
STRUCTURAL  
ELEVATIONS**



©1996 Aurora Modular Industries  
3-7167  
FOOTING PC233-310WS