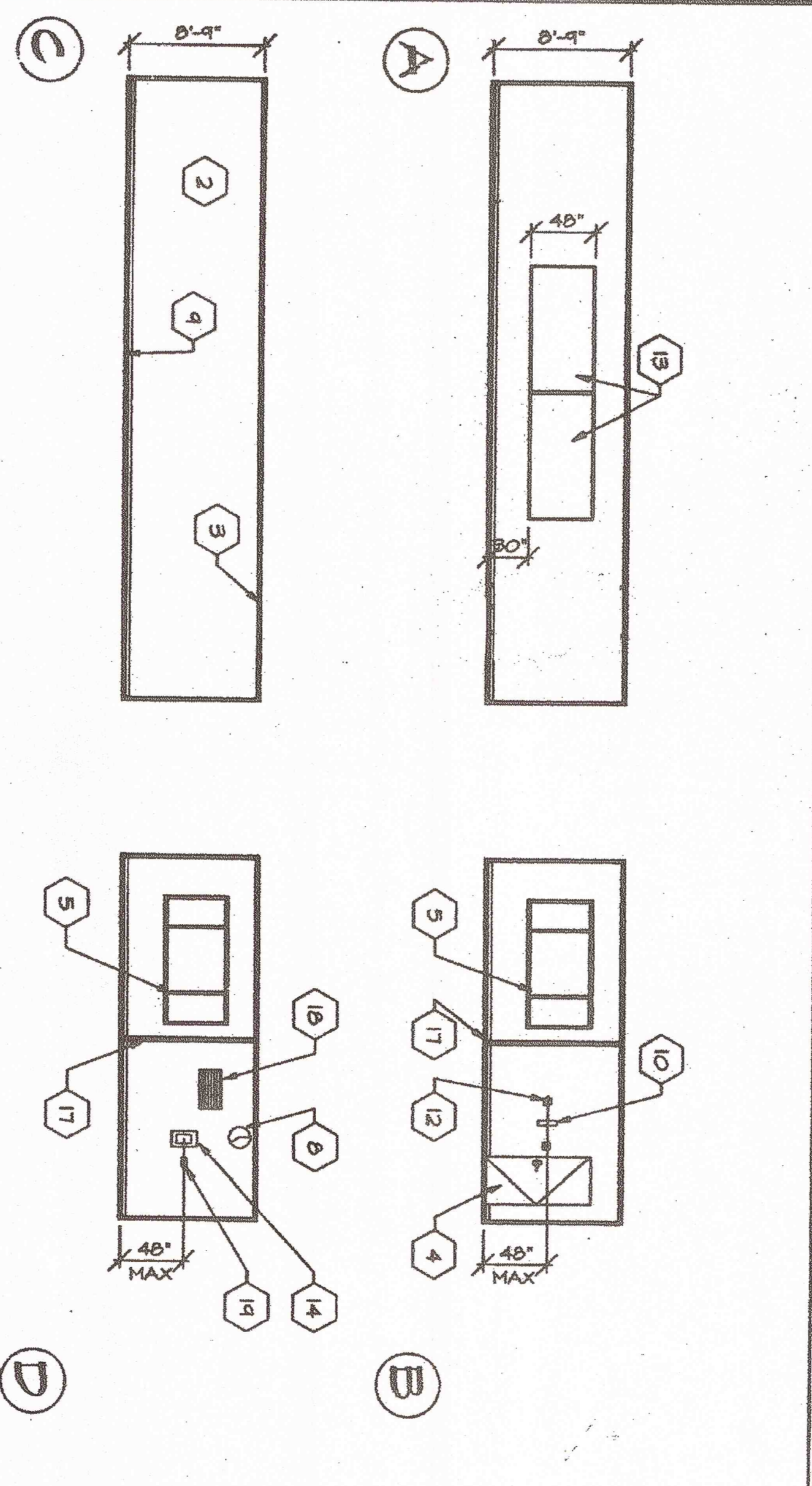
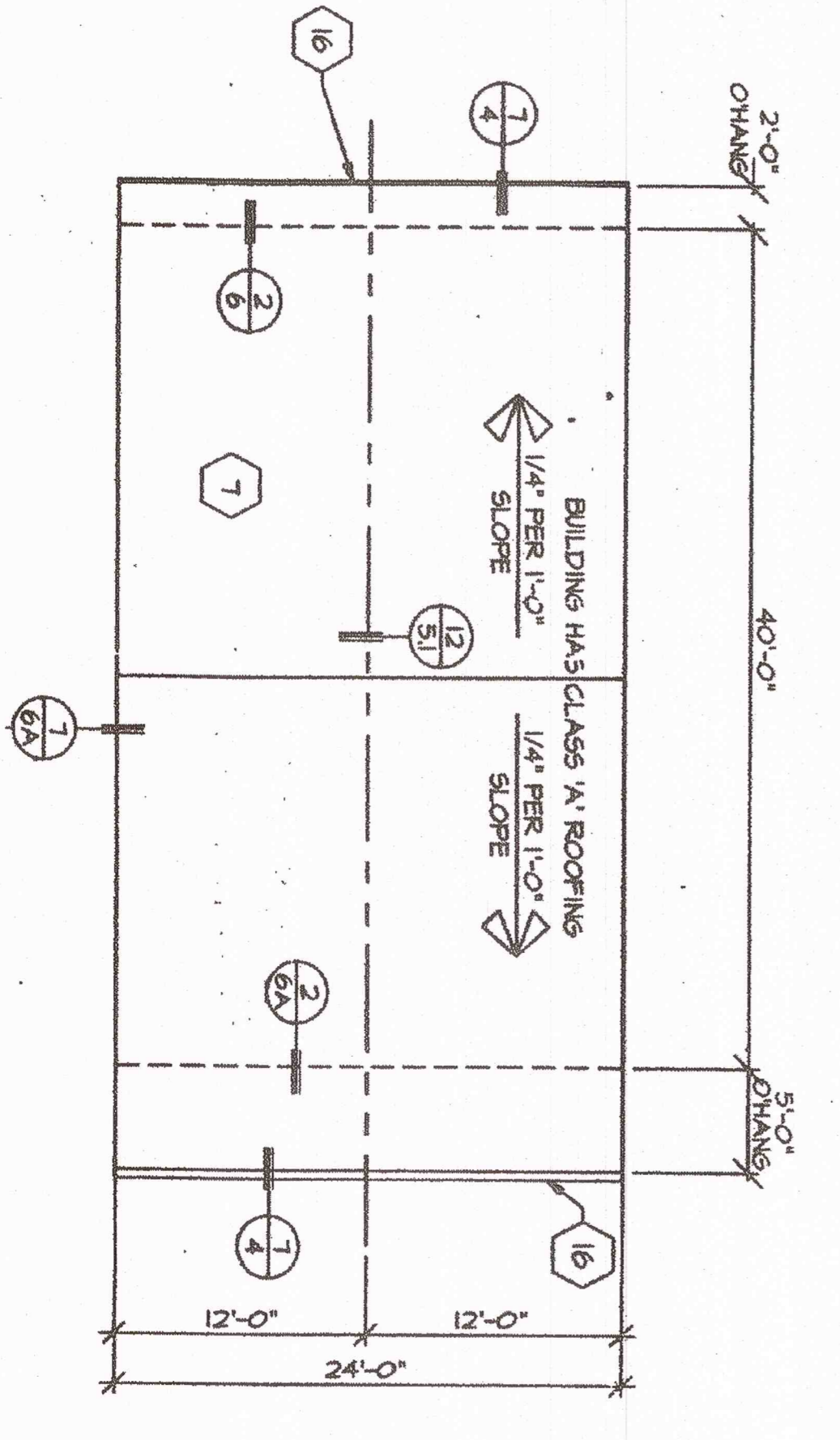


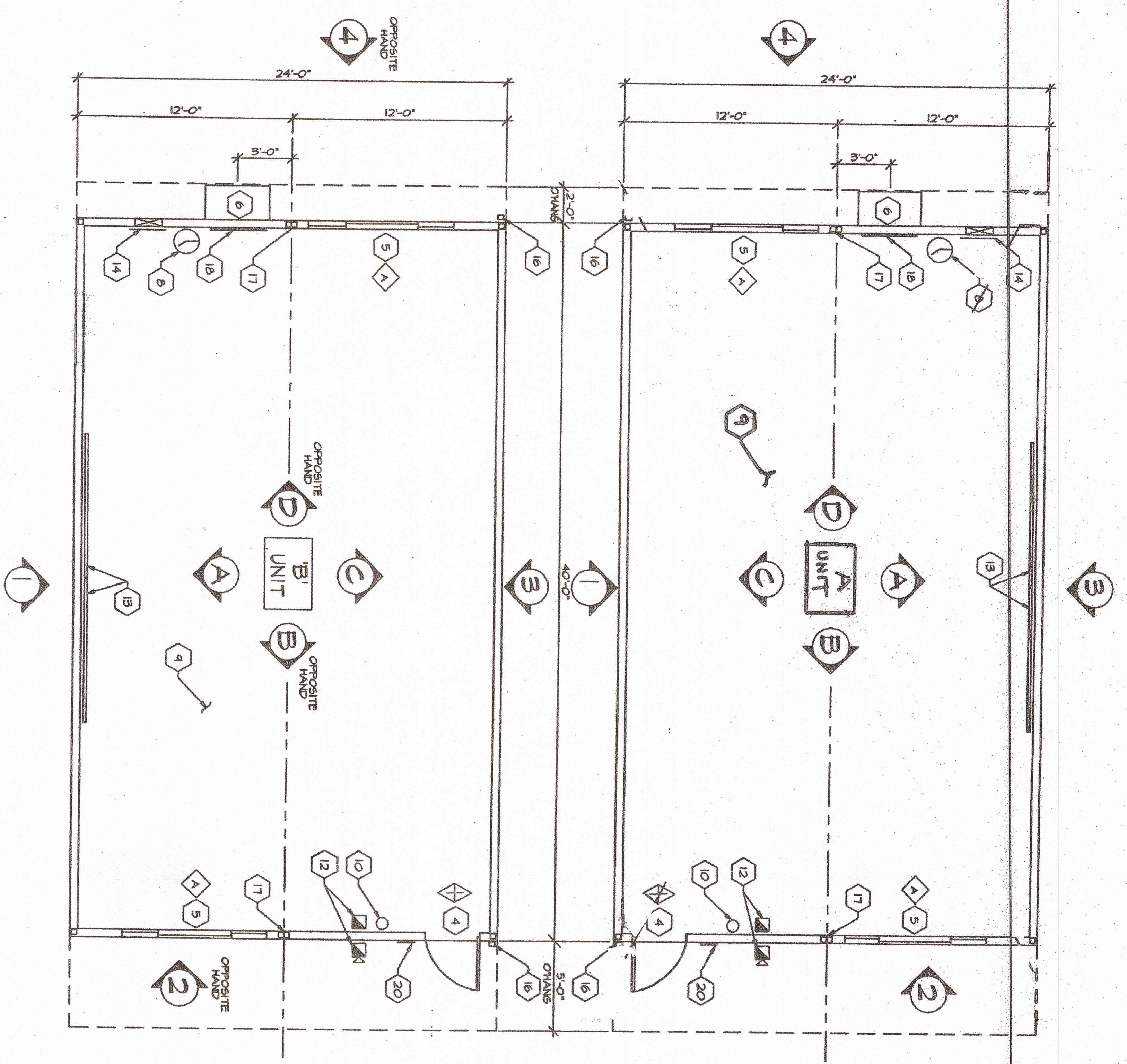
**EXTERIOR ELEVATIONS**  
SCALE: 1/8" = 1'-0"



**INTERIOR ELEVATIONS**  
SCALE: 1/8" = 1'-0"



**ROOF PLAN**  
SCALE: 1/8" = 1'-0"

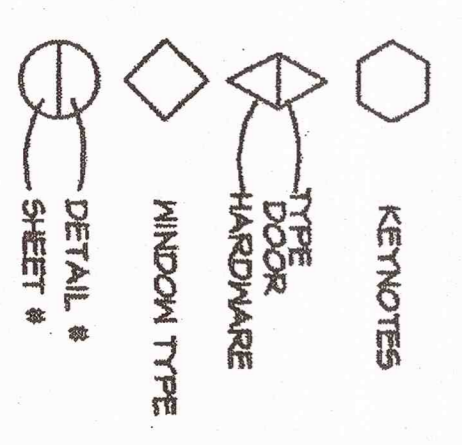


**FLOOR PLANS**  
SCALE: 1/4" = 1'-0"

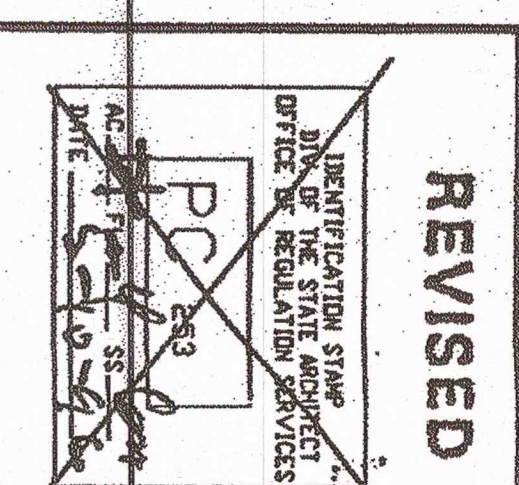
UNIT "A" (AS SHOWN) BLDGS. @ HORACE MANN (L.H. Door)  
 S.N.'s: 19433-34 / 19469-70  
 UNIT "B" (OPPOSITE) BLDGS. @ HOFF (R.H. Door)  
 S.N.'s: 19449-50 / 19563-64 / 19555-56 / 19959-60

**KEYNOTES**

- 1 TYPICAL EXTERIOR FINISH- SEE SHEET 4
- 2 TYPICAL INTERIOR FINISH- SEE SHEET 4
- 3 TYPICAL CEILING MATERIAL- SEE SHEET 4
- 4 EXTERIOR DOOR- SEE SHEET 4
- 5 ALUMINUM SLIDER WINDOW- SEE SHEET 4
- 6 WALL MOUNTED ELECTRIC HEAT PUMP, SEE SHEET 4
- 7 ROOFING- SEE SHEETS 5 & 4
- 8 WALL GLOACK- SEE SHEET 6
- 9 FINISH FLOORING- SEE SHEET 4
- 10 FIRE EXTINGUISHER- 5 LB. DRY CHEMICAL WITH 2A-10B-C UL RATING. MOUNTING BRACKET @ 48" AFF. SEE SHEET 4
- 11 INSULATION- FIBERGLASS BATES R-19 IN ROOF. R-11 IN WALLS AND R-11 IN FLOOR. FLAME SPREAD-0-25. SMOKE DEVELOPED, FUEL CONTRIBUTED-0-400.
- 12 FIRE ALARM- BELL STATION LOCATED @ 4'-0" ON THE INTERIOR WALL. BATTERY LOCATED AT 8'-6" ON THE EXTERIOR. CONDUIT TO BE STRIPPED INTO ATTIC SPACE ONLY.
- 13 CHALKBOARD - SEE SHEET 4
- 14 ELECTRICAL PANEL 'A'- SEE SHEET 6
- 15 METAL TAG ON ALL WALLS MECHANICALLY ATTACHED TO EXTERIOR OF REAR FRAME AT 8'-0" AFF. SHOWING DEPT. APPROVAL NUMBER, MANUFACTURER NAME, FLOOR LOAD, AND LOAD AND UNIT SERIAL NUMBER.
- 16 26 GA. GUTTER AND DOWNSPOUT.
- 17 VINTL WRAPPED CLOSE OFF BATT.
- 18 HVAC RETURN.
- 19 THERMOSTAT, SEE SHEET 6.
- 20 ACCESS SIGN (SEE DETAIL 16 SHEET 4)



**D.S.A. REVISED**



**CHECKED**  
 Date: 03.11.04  
 AG: R/S  
 SS: TB

**REVISIONS**

NO.	DESCRIPTION

**TURORA MODULAR INDUSTRIES**  
 RELOCATABLE BUILDING FOR  
**WILLIAMS/SCOTSMAN GROUP**  
 16833 Krameria Ave., Riverside, CA 92504  
 Phone (909) 789-7196  
 Fax (909) 789-0263

**FLOOR PLAN  
 ROOF PLAN  
 BUILDING  
 ELEVATIONS**

DATE: 9-3-96  
 SHEET #  
 3767  
 203-1108  
 P025-1108