

MARK	DATE	REVISIONS
▲		
▲		
▲		

CHECK AND VERIFY ALL DIMENSIONS BEFORE THE START OF THE WORK. REPORT DISCREPANCIES TO THE ARCHITECT. ALL CONSTRUCTION SHALL CONFORM TO THE C.B.C.

SITE IMPROVEMENTS FOR (2)-24'x40' MODULAR CLASSROOMS AT HORACE MANN ELEMENTARY SCHOOL
 2710 NILES ST, BAKERSFIELD, CA 93306
 FOR BAKERSFIELD CITY SCHOOL DISTRICT
 BAKERSFIELD, KERN COUNTY, CALIFORNIA

REGISTRATION STATE
 OFFICE OF THE ARCHITECT
 OFFICE OF REGULATION SERVICES
 APR 05 11:46 AM '12
 No. 13-46
 Date SEP 11 8:30 AM '17
 P.N. 43321-255

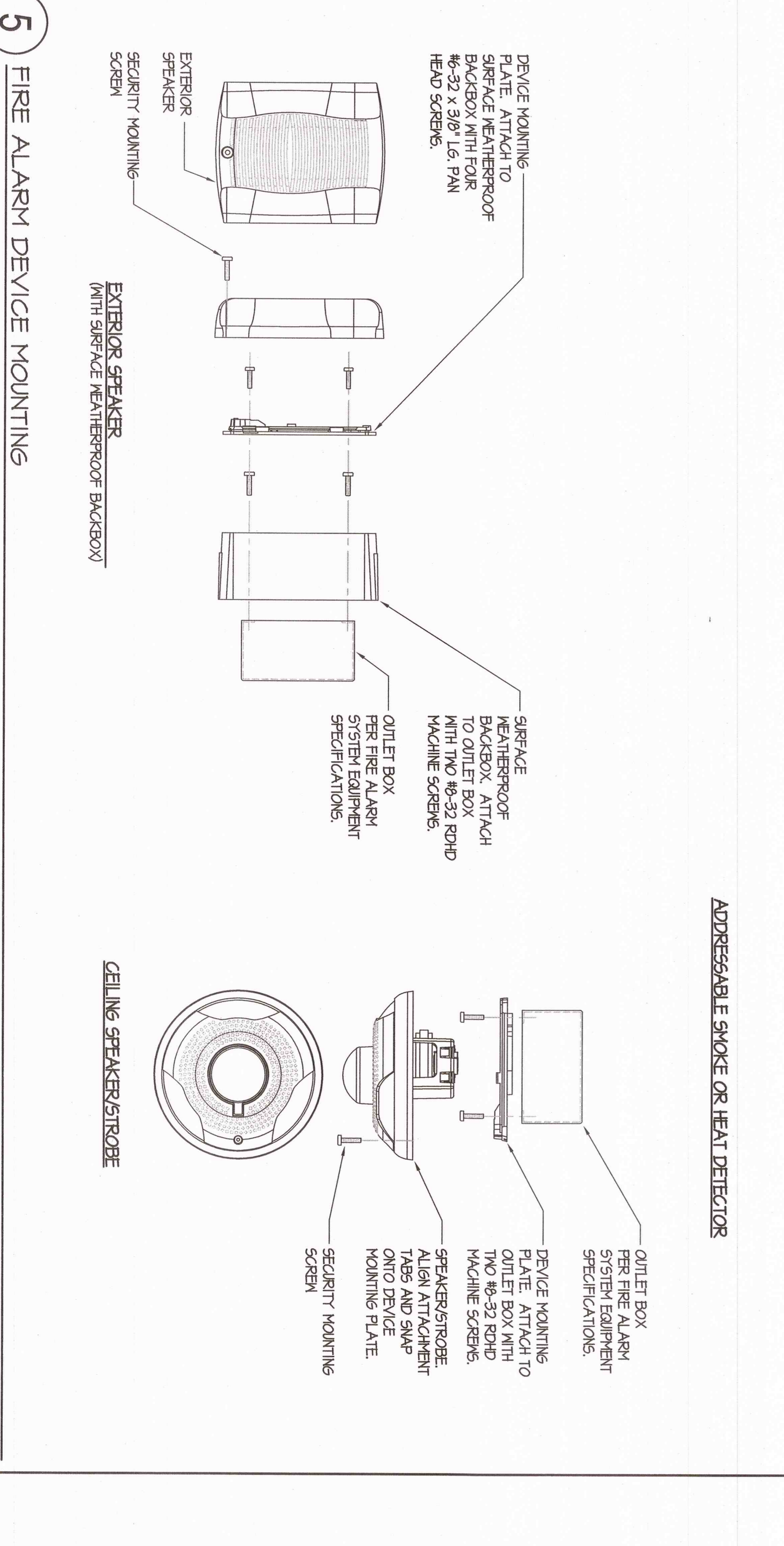
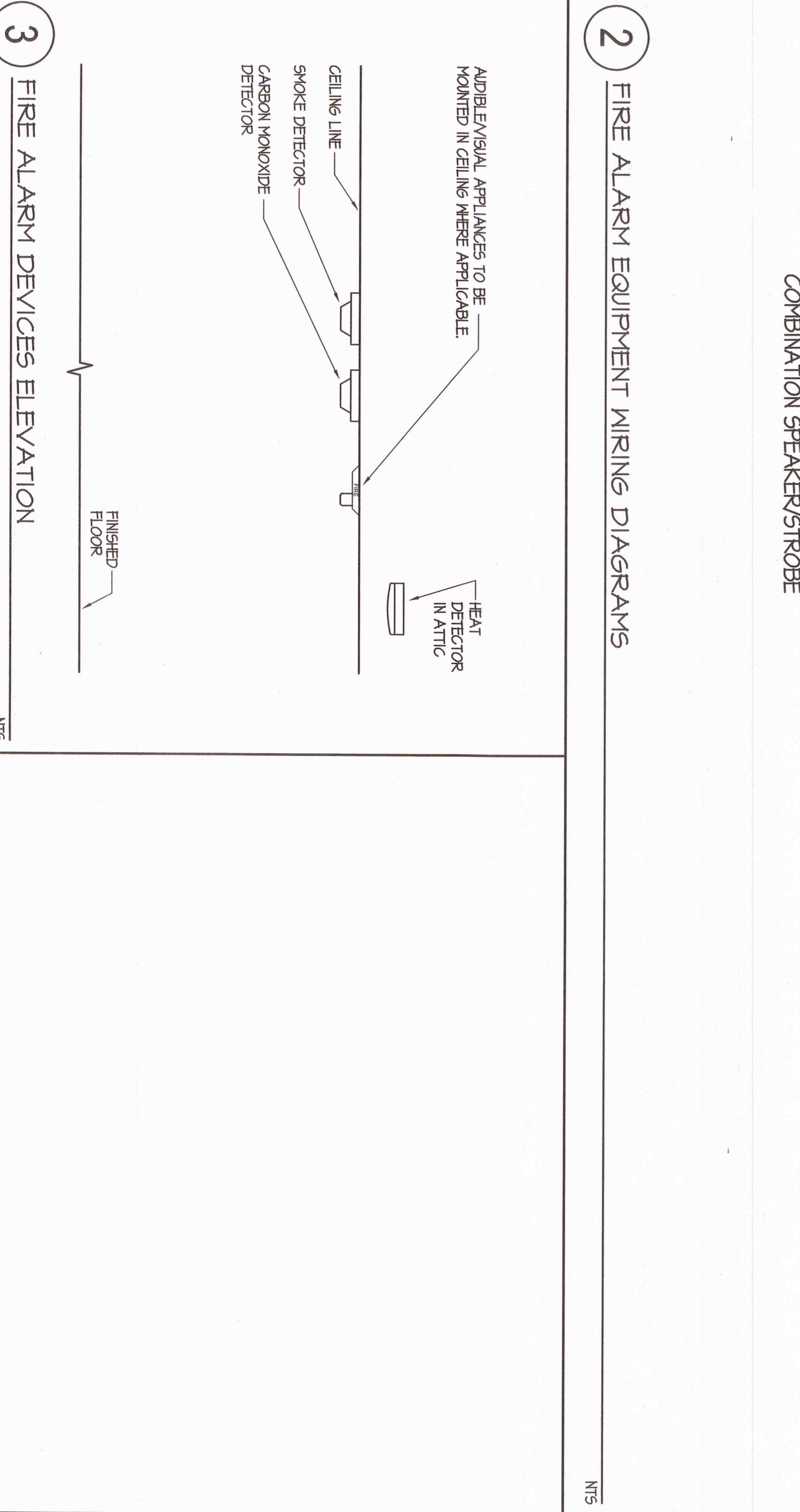
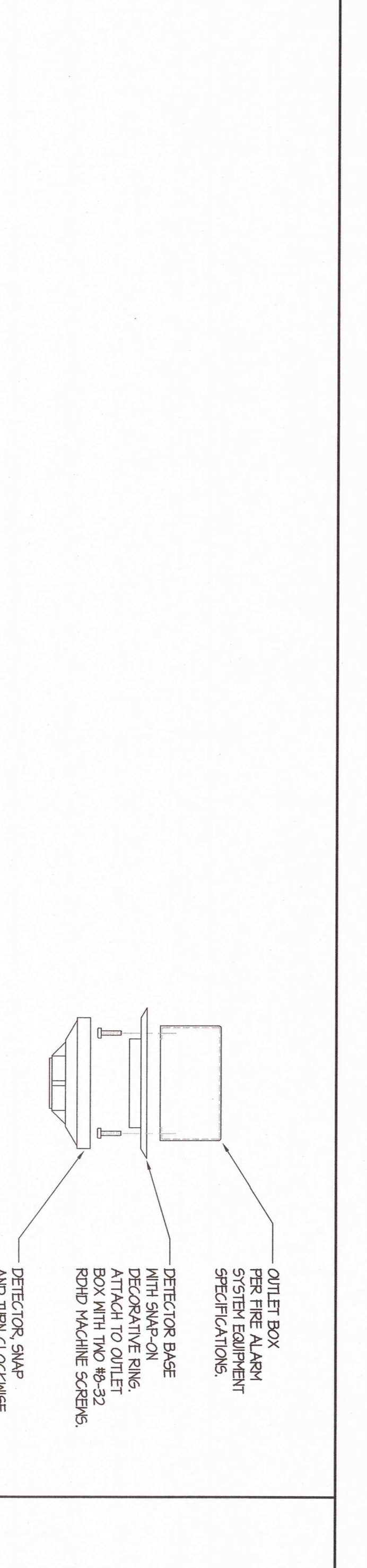
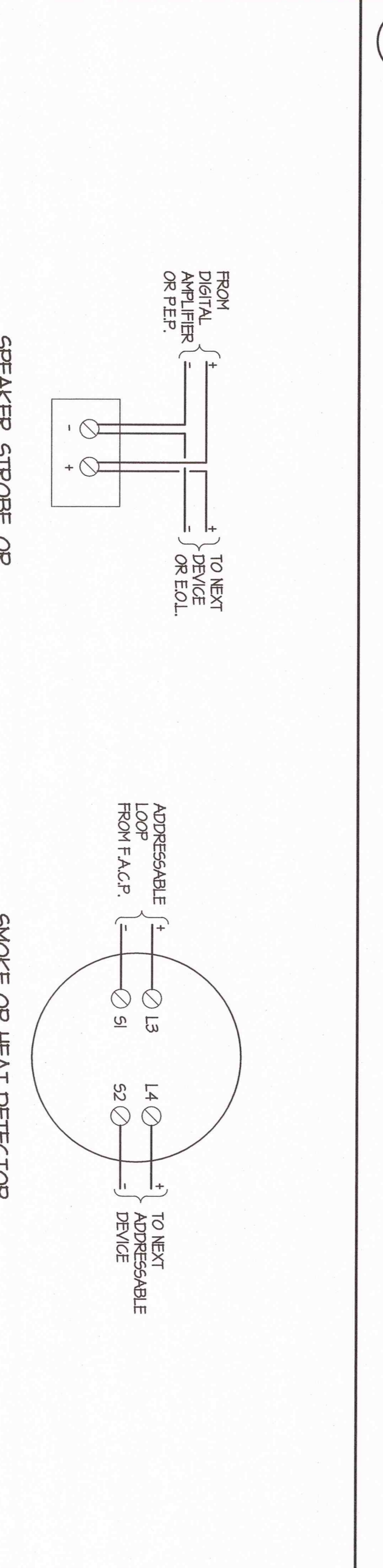
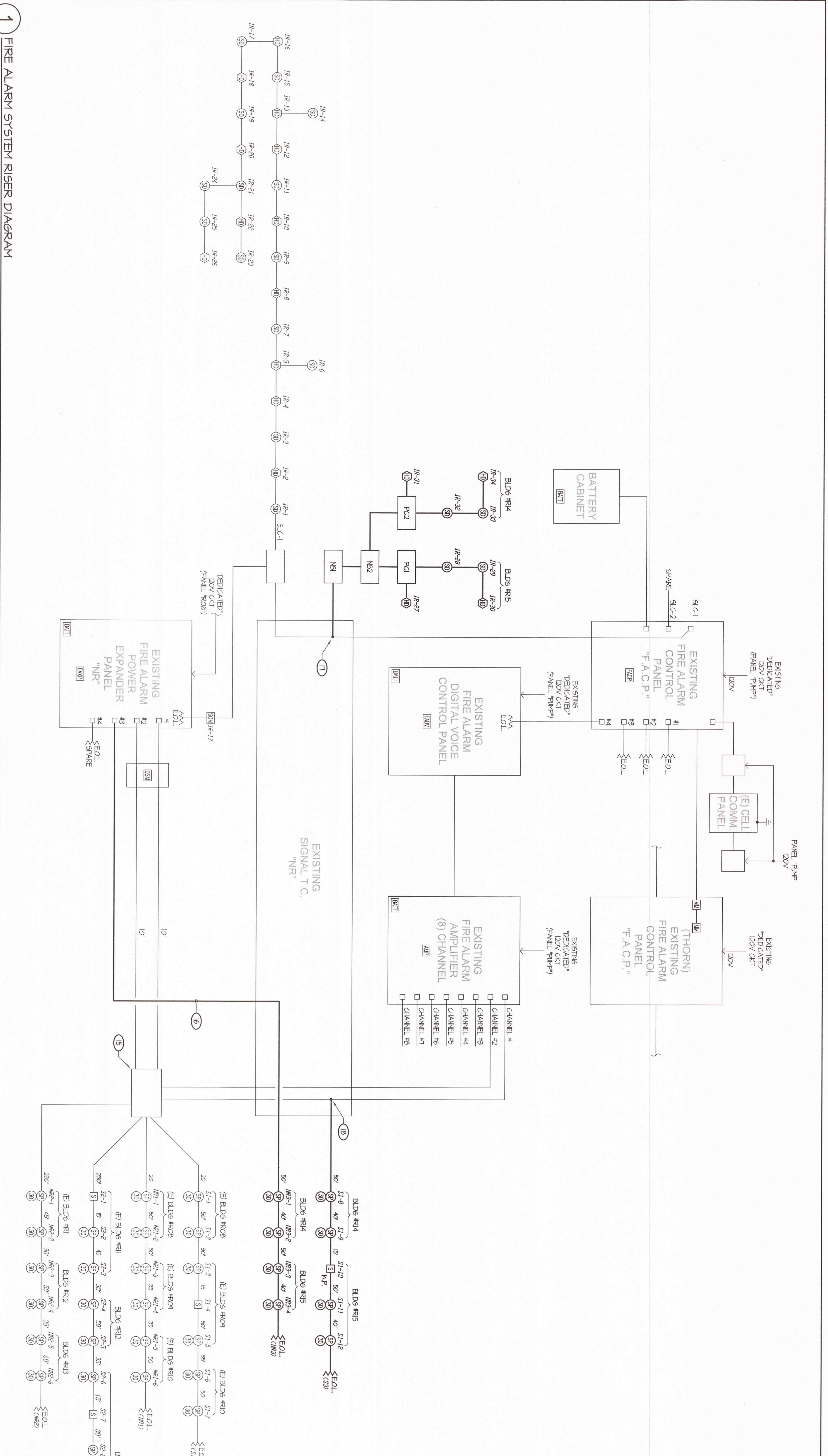
ARCHITECT
 1601 NEW SINE ROAD, SUITE 280
 BAKERSFIELD, CA 93309
 PH: (661) 397-4377
 FAX: (661) 397-4378
 WWW.SCARCHITECT.COM

Engineer
 ROSE SING AND ASSOCIATES, INC.
 131 S. DUNSMUIR - (661) 832-2471
 VANUEN, CALIFORNIA 93222-4705

FIRE ALARM SYSTEM Riser Diagram AND DETAILS

JOB NO. 1744
 DRAWN BY: [Signature]
 CHECKED BY: [Signature]
 DATE: 09/01/17
 SHEETS 3.2

- NOTES (THIS DETAIL ONLY)**
- LENGTHS INDICATED WERE USED FOR CALCULATIONS/TERMINATIONS ONLY AND SHALL NOT BE USED FOR BIDDING.
 - REMOVE A COPY OF THE REVERSED BATTERY CALCULATION FOR THE FIRE ALARM SYSTEM FROM THE PROJECT MANUAL. COORDINATION WITH THE ARCHITECT IS REQUIRED TO REMOVE THESE PLANS AND BE FLASHY LAMINATED. REMOVE FROM THE PROJECT MANUAL.
 - REFER TO REVISIONS FOR ALARM PLAN FOR CONDUIT AND CABLEING/CONDUITOR REVISIONS TYPICAL.
 - CIRCUIT BREAKER IS EXISTING AND IS EQUIPPED WITH A LOCK-ON ACCESSORY.
 - EXISTING SIGNALING CIRCUITS TO REMAIN. NO WORK REQUIRED.
 - EXISTING INITIATION ZONES TO REMAIN. NO WORK REQUIRED.
 - RELOCATE END OF LINE RESISTOR TO LAST DEVICE AS SHOWN.
 - EXISTING ONE 5/8" CABLE.
 - PER FIRE ALARM SYSTEM EQUIPMENT SPECIFICATION. SEE SHEET #E21.
 - PANEL HAS EXISTING BATTERIES PER RESPECTIVE BATTERY CALCULATION ON SHEET #E21.
 - EXISTING JUNCTION BOX IN ACCESSIBLE ATTIC SPACE OF BUILDING #009 TO REMAIN.
 - SET EXTERIOR SPEAKER TAPS AT 1/2 MANT. TYPICAL.
 - SET INTERIOR SPEAKER TAPS AT 1/2 MANT. TYPICAL.
 - SPEAKER CHANNELS FOR FUTURE USE.
 - EXISTING JUNCTION BOX IN ACCESSIBLE ATTIC SPACE OF BUILDING #009 PER FIRE ALARM PLAN.
 - NEW 1/2" CABLE. ROUTE THROUGH CONDUIT AND EXISTING CONDITIONS PER FIRE ALARM PLAN ON SHEET #E22.
 - INTERCEPT THE EXISTING SIGNALING LINE CIRCUIT 5' AT CABLE HANGAR OF THE EXISTING SIGNALING LINE AND EXTERIOR TO NEW ADDRESSABLE DEVICE AS SHOWN (7, AND EXTERIOR TO NEW SPEAKERS/STROBES AND EXTERIOR SPEAKER.



COMPLETE AUTOMATIC FIRE ALARM SYSTEM PLAN SUBMITTAL

THE FIRE ALARM SYSTEM SHOWN ON THESE PLANS HAS BEEN SUBMITTED AND APPROVED BY THE DIVISION OF THE STATE ARCHITECT. ANY SUBSTITUTION OF AND REVISIONS TO THE SYSTEM SHALL BE SUBMITTED TO THE ARCHITECT FOR REVIEW AND APPROVAL. THE ARCHITECT SHALL BE RESPONSIBLE FOR THE REVIEW AND APPROVAL OF ANY SUBSTITUTIONS AND REVISIONS TO THE SYSTEM.

THE FIRE ALARM SYSTEM SHALL BE A TOTAL (CONVENTIONAL) WIRE AND SMOKE DETECTION SYSTEM PER C.F.C. SECTION 90723A AND SHALL COVER EVERY ROOM AND/OR AREA, UPON THE ACTIVATION OF ANY INITIATION DEVICE THE FIRE ALARM SYSTEM SHALL ALERT ALL OCCUPANTS AND TRANSMIT THE ALARM (SPEECH/STROBE) SIGNALS TO AN APPROVED SUPERVISING STATION (C.F.C. SECTION 90723B).