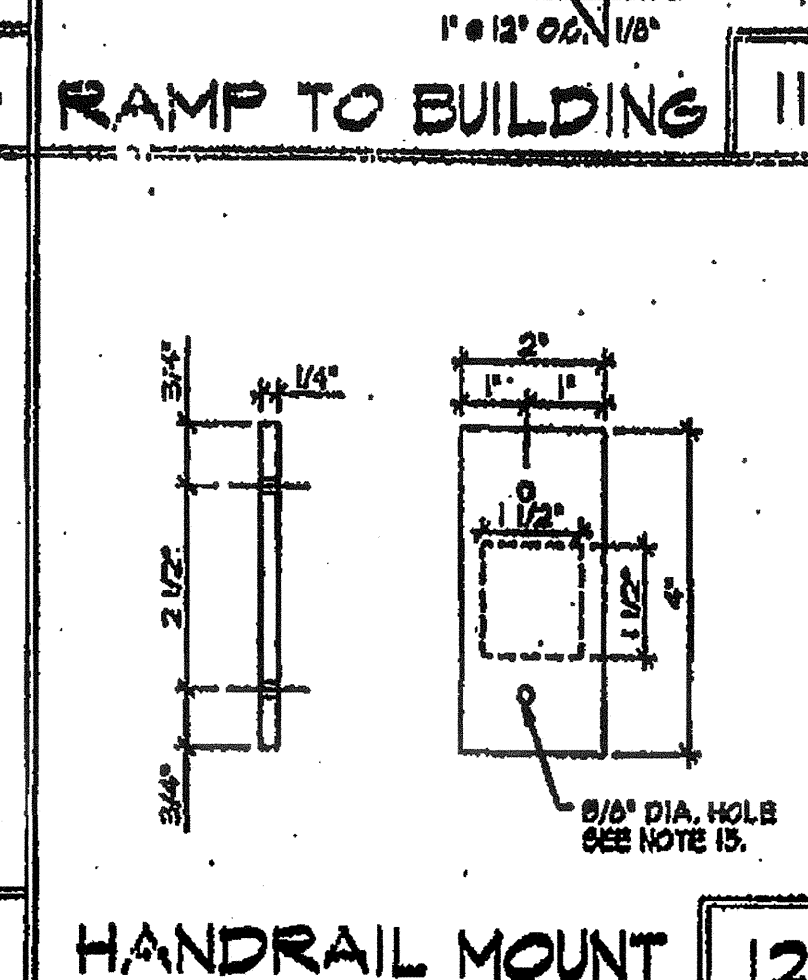
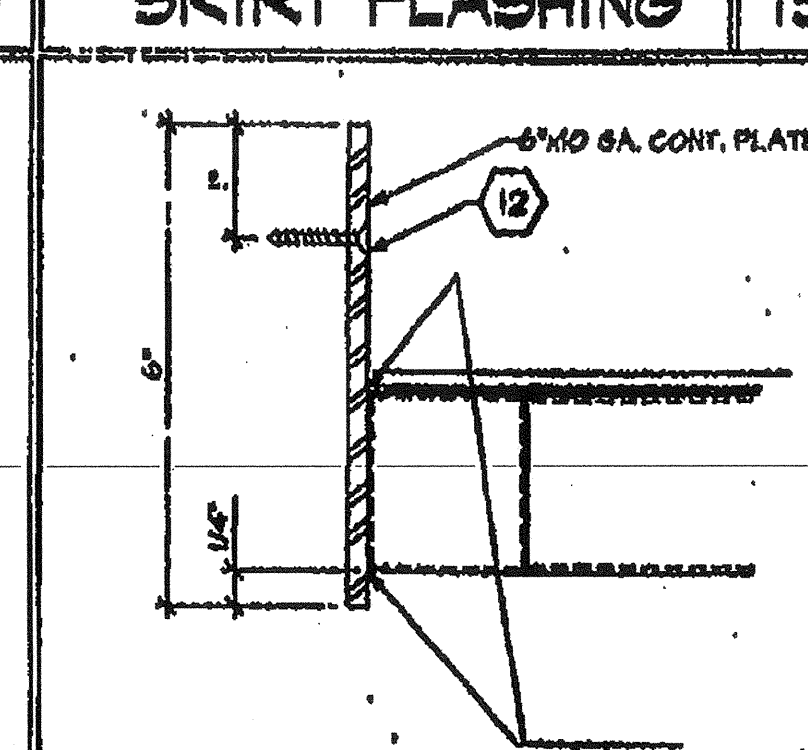
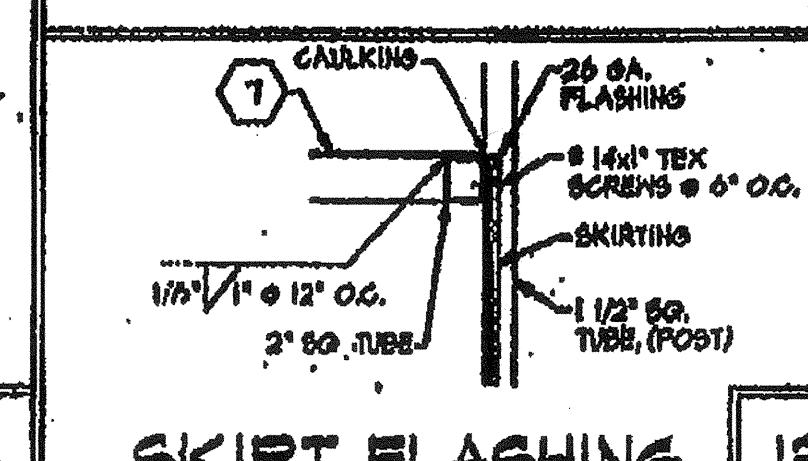


- KEYNOTES**
- 1 UPRIGHT TUBE - 1-1/2" x 1-1/2" x 16 GA. SQUARE TUBE.
  - 2 HANDRAIL TUBE - 1-1/2" x 1-1/2" x 16 GA. SQUARE TUBE.
  - 3 RAMP PERIMETER TUBE - 2-1/2" x 1-1/2" x 16 GA. SQUARE TUBE.
  - 4 LANDING PERIMETER TUBE - 1-1/2" x 1-1/2" x 16 GA. SQUARE TUBE.
  - 5 RAMP CROSS TUBE - 1-1/2" x 1-1/2" x 16 GA. SQUARE TUBE.
  - 6 LANDING CROSS TUBE - 2" x 2" x 16 GA. SQUARE TUBE.
  - 7 \*METAL DECK-12 GA. STEEL DECK NON-SLIP NON-SKID FINISH SHALL BE APPLIED BY AMERICAN CHEM. CO. OR EQUIVALENT APP. IN ADVANCE & IN WRITING BY OWNER.
  - 8 ADJUSTABLE LEGS - 1-1/2" x 1-1/2" x 16 GA. SQUARE TUBE WITH 5/8" x 1/4" THICK BASE PLATE WELDED TO LEGS. BASE PLATE TO HAVE (2) 3/8" HOLES FOR 1/4" LAS BOLTS FOR HOOD OR ATTACH PLATE TO CONCRETE WITH 1/2" DIA. MAX. HOLE. PIPE MAY BE DRIVEN AT A MAX. OF 45 DEGS. ANGLE IN VERTICAL.
  - 9 1/4" x 1/8" THICK PLATE.
  - 10 WHEEL CHAIR RAIL - 1" x 1" SQUARE TUBE - TACK WELDED TO UPRIGHT MEMBERS.
  - 11 3/8" DIA. MACHINE BOLTS.
  - 12 3" x 10" S.A. PLATE 1/4" R4S NO. SCREWS AT 12" O.C. (N.C.) STRUCTURAL WOOD MEMBERS OR 3" x 10" U2" BELL TAP SCREWS AT 12" O.C. INTO STRUCTURAL STEEL MEMBERS.
  - 13 2" x 6" PLY. 2 x 6 PLY. USE HOOD PAD ONLY WHEN RAMP IS SET ON GRADE. WHEN RAMP IS SET ON CONCRETE OR AG. PAVING, PLATE SETS DIRECTLY ON FINISH SURFACE.
  - 14 SKIRTINGS - MOUNTING PLATE 2" x 6" x 1/4" S.A. 1/2" PIECE OF TUBE COPED TO FIT HANDRAIL. TUBE DRILL 1/2" HOLES IN MOUNTING PLATE FOR 3/8" x 2" LAS BOLTS FOR ATTACHMENT ENDS AND MAX. 7'-0" O.C.
  - 15 DRIVE 1" DIA. x 12" L. PIPE AT 10" O.C. MAX. DRILL 1/2" DIA. MAX. HOLE. PIPE MAY BE DRIVEN AT A MAX. OF 45 DEGS. ANGLE IN VERTICAL. (NOT REQUIRED FOR ASPHALT OR CONCRETE)



**D.S.A.**

11/15/99

**CHECKED**

**REVISIONS**

IDENTIFICATION STAMP  
DIV. OF THE STATE ARCHITECT  
APR 03 11 99 17  
AC FLA. S.S. JEL  
DATE APR 3 0 2016

**TURORA MODULAR INDUSTRIES**  
11833 S. W. 11th Ave., Miramar, FL 33025  
Tel: (305) 788-0000  
FAX: (305) 788-0001  
RELOCATABLE BUILDING SYSTEMS  
WILLIAMS/SCOTEMAN GROUP

**RAMP PLAN AND DETAILS**

BY JWP  
SHEET 0-20-99  
3767