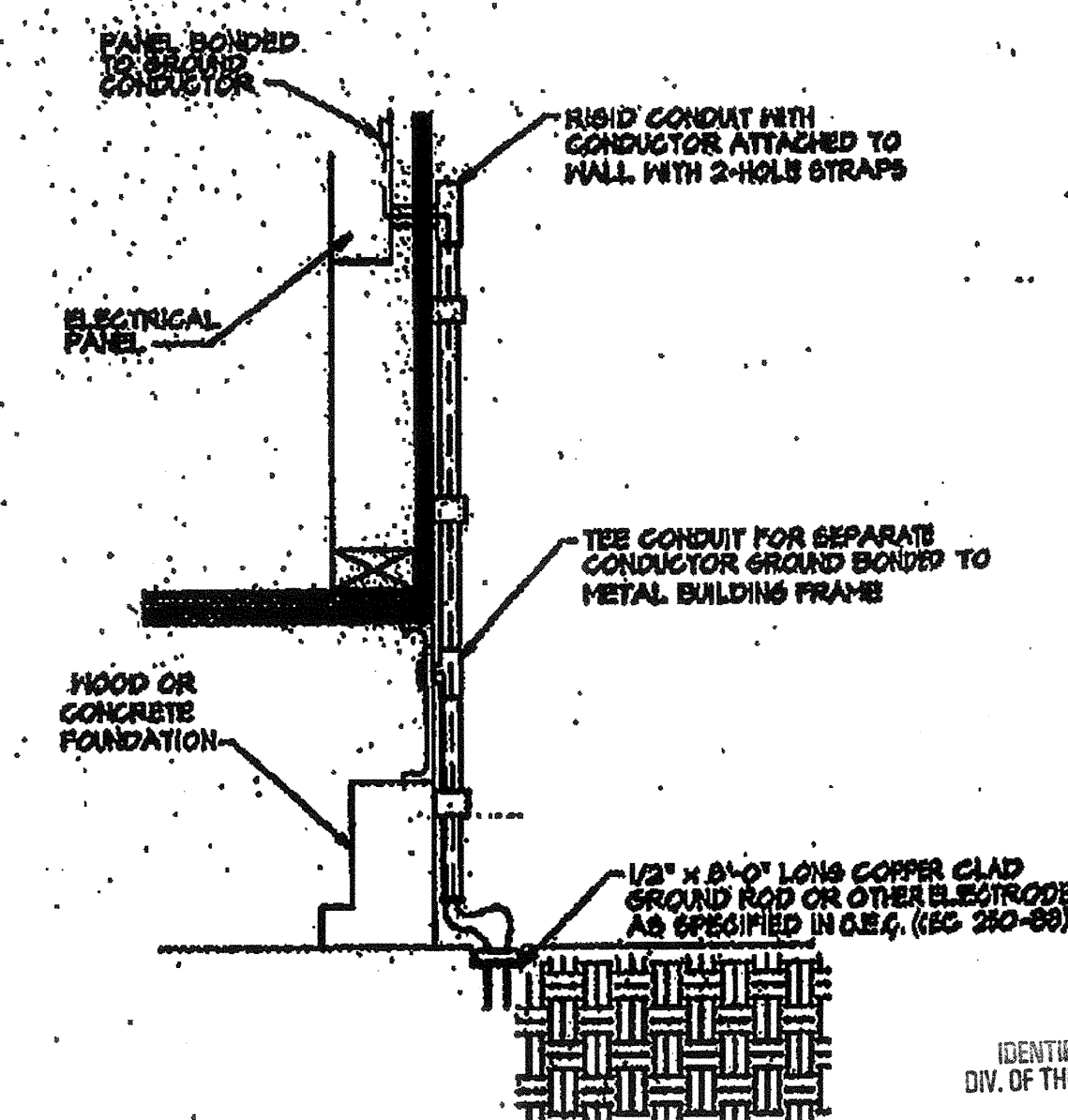
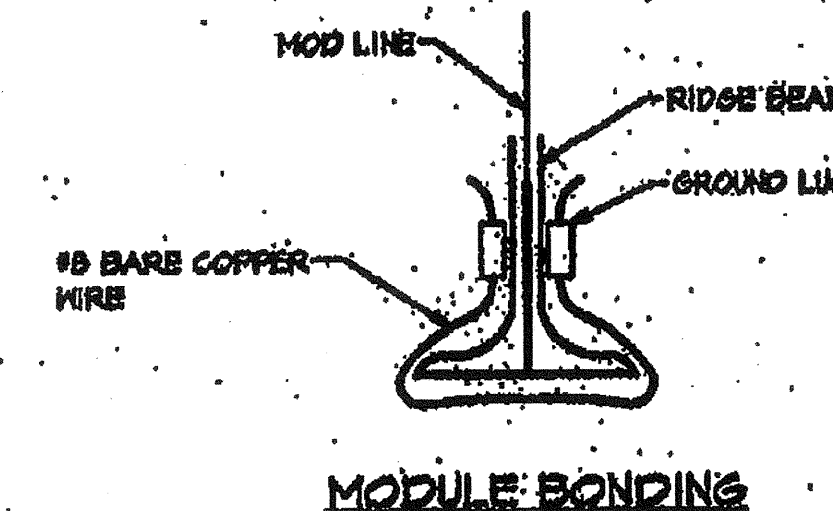


PANEL A		120/240 VOLT		1 PHASE		3 WIRE	
100A BUS		100A MAIN					
NO.	TYPE	WATTAGE	BREAKER	TYPE	REMARKS		
1	2	840	20	1			
2	2	840	20	1			
3	2	840	20	1			
4	2	840	20	1			
5	2	840	20	1			
6	2	840	20	1			
7	2	840	20	1			
8	2	840	20	1			
9	2	840	20	1			
10	2	840	20	1			
11	2	840	20	1			
12	2	840	20	1			
13	2	840	20	1			
14	2	840	20	1			
15	2	840	20	1			
16	2	840	20	1			
17	2	840	20	1			
18	2	840	20	1			
19	2	840	20	1			
20	2	840	20	1			
TOTALS		8404	8504		710B	24A	amps cpm
LCL = 6020		LCL N.2B			1507		amps
					261B		amps

ELECTRICAL LEGEND	
SYMBOL	DESCRIPTION
⊕ 15"	DUPLEX RECEPT - 150 WATT 3 WIRE GROUNDING TYPE - 150" DENOTES GROUND FAULT INTERRUPTER
⊕ 40"	LIGHT SWITCH - SINGLE POLE
⊕	JUNCTION BOX
⊕	DISCONNECT SWITCH - BUILT INTO A/C UNIT
⊕ 40"	THERMOSTAT
⊕ 40"	FIRE ALARM PULL STATION-STROBE J-BOXES & CO.
⊕ 40"	FIRE ALARM HORN, J-BOX & CONDUIT ONLY
⊕	ELEC. PANEL
⊕	CLOCK 8" BELOW CEILING LINE

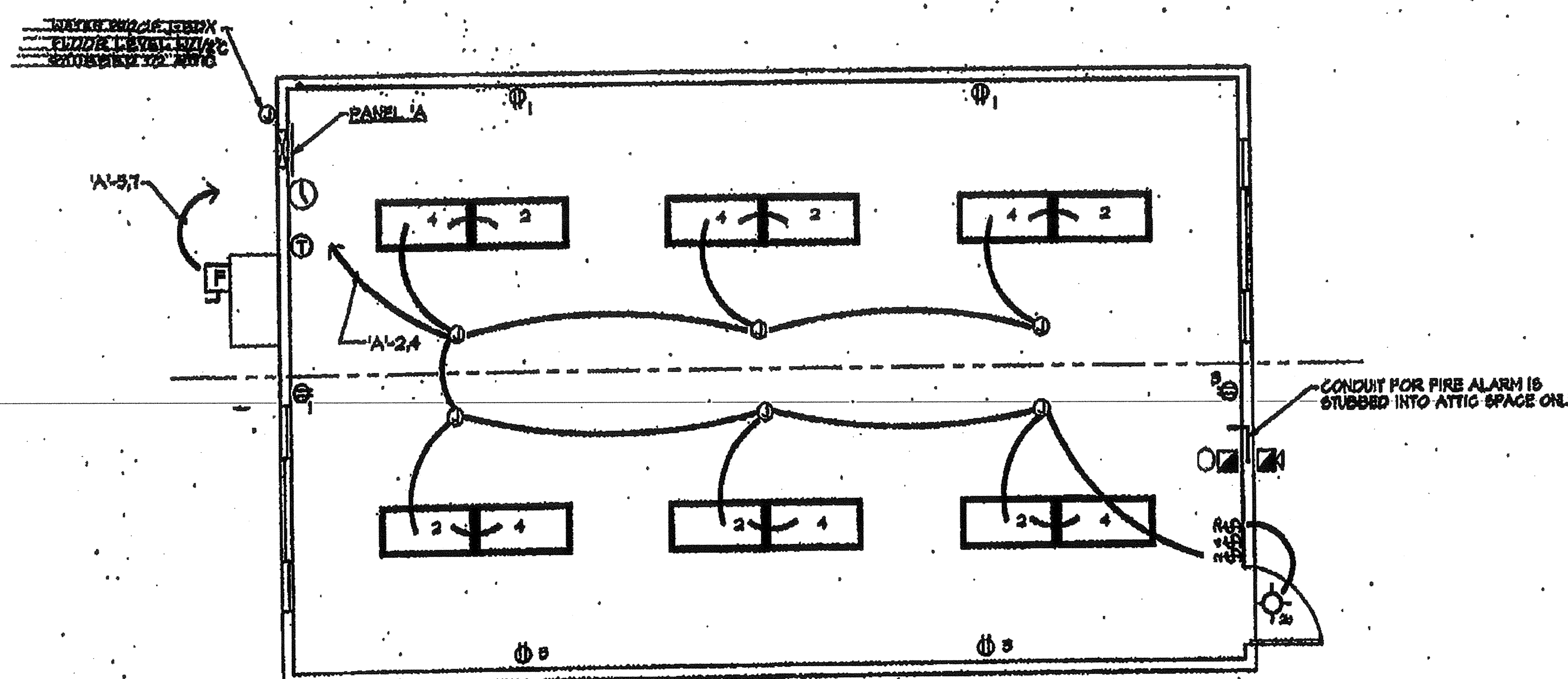
FIXTURE SCHEDULE				
TYPE	SYMBOL	DESCRIPTION	WATTS	MANUFACTURER
1	⊕	DUPLEX RECEPT - 150 WATT 3 WIRE GROUNDING TYPE - 150" DENOTES GROUND FAULT INTERRUPTER	150 WATT	GRANDT 2415420LA
2	⊕	LIGHT SWITCH - SINGLE POLE	100 WATT	KEVAL 3003



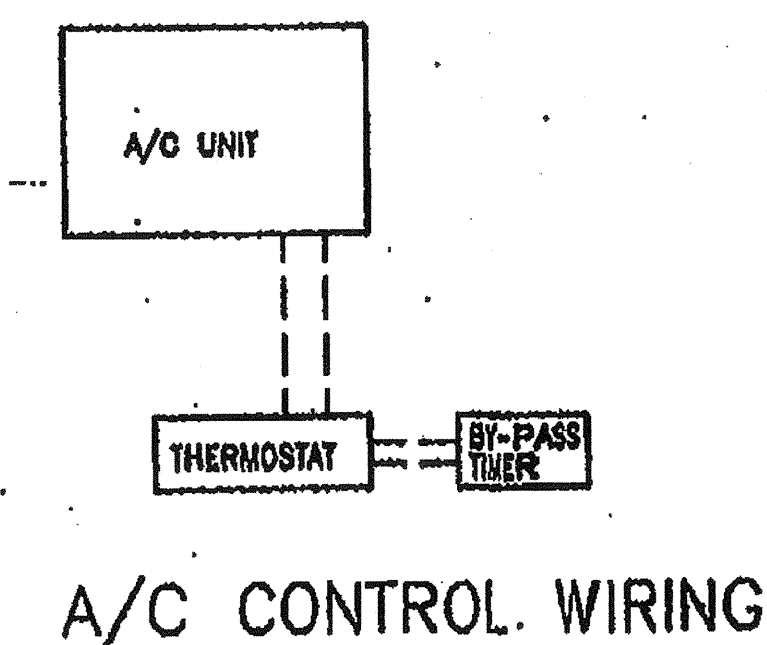
SYSTEM GROUND DETAIL
NOT BY PORTABLE MANUFACTURE

- SIZE OF CONDUCTORS SHALL COMPLY WITH NEC TABLE 250-149.
- BOND SEPARATE CONDUCTORS FROM GROUND ROD TO ELECTRICAL PANEL AND TO METAL BUILDING FRAME (NEC 250-91). IN ADDITION TO THE DETAIL SHOWN ABOVE, BOND THE ELECTRICAL GROUND TO METAL WATER PIPE ENCASED AT LEAST 10 FT. INTO THE SOIL, IF AVAILABLE. (NEC 250-91 & 250-99).
- ALL MODULES OF THE METAL FRAME BUILDING SHALL BE ELECTRICALLY BONDED TOGETHER. (BOLTING ONLY IS NOT ACCEPTABLE BONDING.)
- CHECK RESISTANCE TO GROUND. IF RESISTANCE EXCEEDS 25 OHMS, INSTALL ADDITIONAL GROUND RODS (NEC 250-54) AS REQUIRED, WITH CONDUCTORS AS SHOWN, SEPARATED BY AT LEAST 6'-0" UNTIL RESISTANCE IS 25 OHMS OR LESS.
- FIELD INSPECTOR SHALL WITNESS THE GROUNDING TEST.
- ADDITIONAL OUTLETS AND OR J-BOXES MAY BE ADDED AS NEEDED AND OR PER DISTRICT'S APPROVED REQUEST TO MATCH SITE SPECIFIC REQUIREMENTS PROVIDED THESE WORK WITH BUILDING'S ELECT. PANEL LOADS.

IDENTIFICATION STAMP
DIV. OF THE STATE ARCHITECT
APPROX 119917
AC FLS SS
DATE APR 30 2019



LIGHTING AND POWER PLAN
SCALE 1/4" = 1'-0"



D.S.A.

REVISED

CHECKED

REVISIONS

IDENTIFICATION STAMP
DIV. OF THE STATE ARCHITECT
APPROX 119917
AC FLS SS
DATE APR 30 2019

TURORA MODULAR INDUSTRIES
RESISTANCE BONDING FOR WILLIAMS/SCOTSMAN GROUP

ELECTRICAL, POWER & LIGHTING FLOOR PLAN & PANEL SCHEDULE

9-3-16

876-7